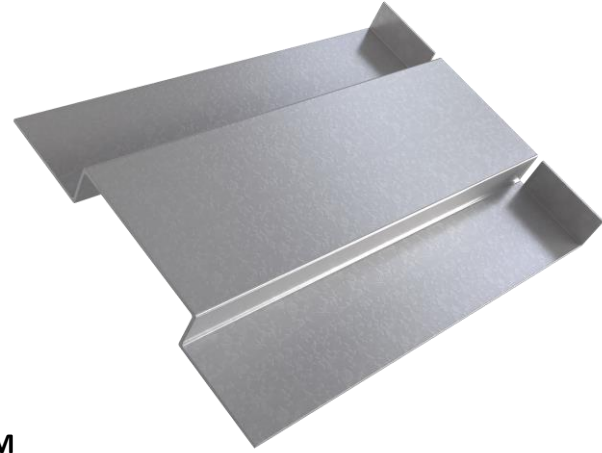


Item Code : 6672

## HADLEY 12mm SERVICE SUPPORT PLATE

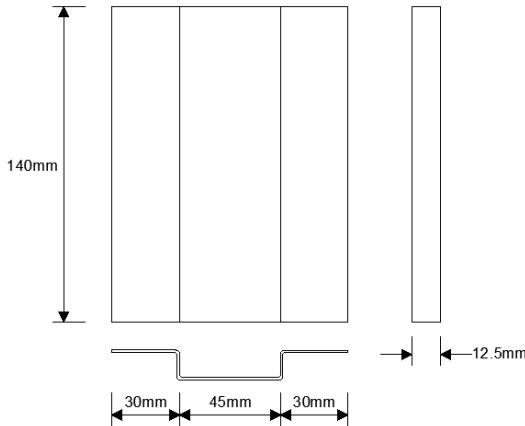
Hadley Service Support Plates are used to secure 12mm Plywood to allow services to be fixed to the face of a Partition.

Manufactured in accordance with EN 14195:2005



Scan QR code for Hadley System **Golden Thread** Documents: Technical Datasheet, Material Safety Datasheet, Declaration of Performance (DoP), O&M Manual and more...

### Product Information



REACTION TO FIRE:  
A1

SERVICE CUT OUTS:  
N/A

SYSTEM PERFORMANCE INFORMATION:  
To be installed as a part of a complete Hadley system to achieve both Fire and Acoustic performance. To understand more about our fully warranted and tested solutions, please contact our Hadley Construction Technology Team.

Rev	Date	Comment	By	Chk	App
1.0	19/08/24	First Issue	FM	SH	JS
2.0	07/11/24	Second Issue	FM	SH	JS

<b>Depth</b>	12mm
<b>Gauge</b>	0.6mm
<b>Pack Quantities</b>	Box of 100

#### STORAGE & HANDLING:

When installing Hadley components please ensure full PPE is used and the site is practicing a safe working environment alongside industry standards.

#### DISPOSAL:

Hadley Metal is fully recyclable.

#### SYSTEMS USED:

All Hadley Systems

#### SYSTEM PERFORMANCE INFORMATION:

For installation guidance please refer to the Hadley HAD243 / HAD244 Service Support Plate Installation Details