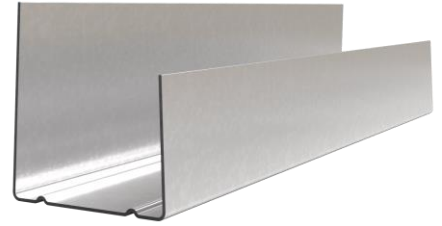


Item Code : 989

HADLEY PERIMETER CHANNEL MF6A

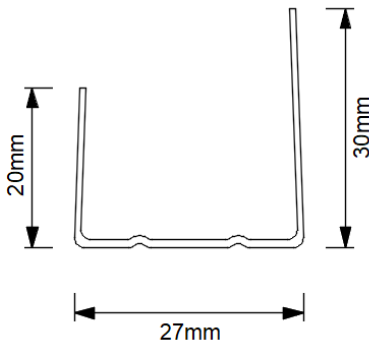
Hadley Perimeter Channel MF6A is installed into the perimeter of the substrate to receive ends of MF5 Secondary Channel Sections.

Manufactured in accordance with EN 14195:2005



Scan QR code for Hadley System **Golden Thread** Documents: Technical Datasheet, Material Safety Datasheet, Declaration of Performance (DoP), O&M Manual and more...

Product Information



DRY-HAD-XX-ZZ-TE-X-133

Rev	Date	Comment	By	Chk	App
1.0	19/08/24	First Issue	FM	SH	JS
2.0	07/11/24	Second Issue	FM	SH	JS

Depth	20mm / 30mm
Width	27mm
Gauge	0.5mm
Lengths	3.6m
Pack Quantities	10 / 200 / 400

REACTION TO FIRE:
A1

SERVICE CUT OUTS:
N/A

SYSTEM PERFORMANCE INFORMATION:
For performance information on our HadleyMF Ceiling systems please contact the Hadley Construction Technology Team.

STORAGE & HANDLING:

When installing Hadley components please ensure full PPE is used and the site is practicing a safe working environment alongside industry standards.

DISPOSAL:

Hadley Metal is fully recyclable.

SYSTEMS USED:

HadleyMF - Ceiling System