

Item Code : 581B

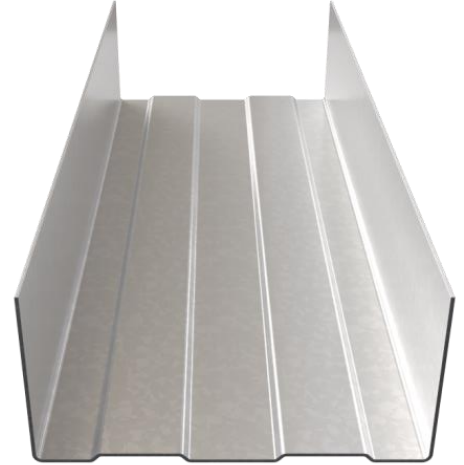
HADLEY 62mm Track

Hadley Tracks (U Channels) are cold-rolled steel Tracks used mainly at the head and base junctions of Hadley System to create non-loadbearing internal partitions.

Manufactured in accordance with EN 14195:2005



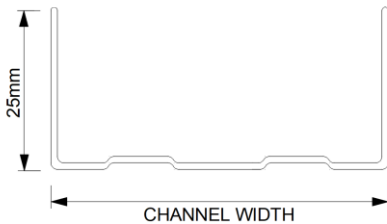
Scan QR code for Hadley System **Golden Thread Documents: Technical Datasheet, Material Safety Datasheet, Declaration of Performance (DoP), O&M Manual and more...**



Product Information

DRY-HAD-XX-ZZ-TE-X-114

Rev	Date	Comment	By	Chk	App
1.0	19/08/24	First Issue	FM	SH	JS
2.0	07/11/24	Second Issue	FM	SH	JS



Width	62mm
Flange	25mm
Gauge	0.6mm
Lengths	3m
Pack Quantities	10 / 100 / 300

REACTION TO FIRE:
A1

YIELD STRENGTH:
210 (N/mm²)

SERVICE CUT OUTS:
N/A

SYSTEM PERFORMANCE INFORMATION:
To be installed as a part of a complete Hadley system to achieve both Fire and Acoustic performance. To understand more about our fully warranted and tested solutions, please contact our Hadley Technical Support Team.

STORAGE & HANDLING:

When installing Hadley components please ensure full PPE is used and the site is practicing a safe working environment alongside industry standards.

DISPOSAL:

Hadley Metal is fully recyclable.

SYSTEMS USED:

- HadleySOLO – Single Stud System
- HadleyHUSH– Single Stud with Resilient Bar System
- HadleyDUO – Twin Frame I Stud System
- HadleySHAFT – Shaftwall System
- HadleyBRACE – Twin Framed braced C Stud System
- HadleyLINE – Independent Lining System