

Hadley**DRYLINING**

PARTITION & CEILING METAL

Technical Datasheets

2024



FULLY WARRANTED SYSTEM

Item Code : 5297

HADLEY 50mm C STUDS

Hadley C Studs are cold-rolled steel studs used as part of a Hadley System to create non-loadbearing internal partitions.

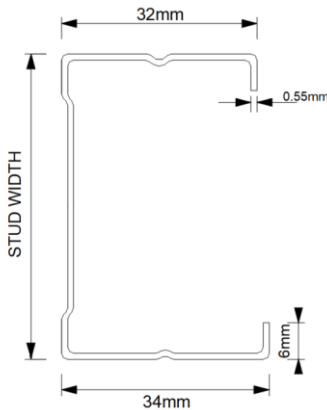
Manufactured in accordance with EN 14195:2005



Scan QR code for Hadley System **Golden Thread Documents: Technical Datasheet, Material Safety Datasheet, Declaration of Performance (DoP), O&M Manual and more...**



Product Information



REACTION TO FIRE:
A1

YIELD STRENGTH:
210 (N/mm²)

SERVICE CUT OUTS:
80mm x 30mm @ 600mm Centres

SYSTEM PERFORMANCE INFORMATION:
To be installed as a part of a complete Hadley system to achieve both Fire and Acoustic performance. To understand more about our fully warranted and tested solutions, please contact our Hadley Construction Technology Team.

Rev	Date	Comment	By	Chk	App
1.0	19/08/24	First Issue	FM	SH	JS

Width	50mm
Flange	32mm/34mm
Gauge	0.55mm
Lengths	2.4m / 2.7m / 3.0m / 3.6m / 4.2m
Pack Quantities	10 / 50 / 300

STORAGE & HANDLING:

When installing Hadley components please ensure full PPE is used and the site is practicing a safe working environment alongside industry standards.

DISPOSAL:

Hadley Metal is fully recyclable.

SYSTEMS USED:

- HadleySOLO – Single Stud System
- HadleyDUO – Twin Frame I Stud System (*used only at abutments)
- HadleyBRACE – Braced Twin Frame System
- HadleyHUSH – Single Stud System using Resilient Bars
- HadleySTAGGER – Staggered Stud System (*used only at abutments)
- HadleyLINE- Independent I Stud Lining System (*used only at abutments)

Item Code : 5373

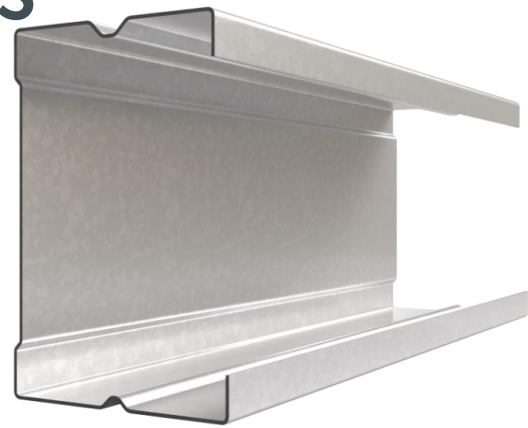
HADLEY 60mm C STUDS

Hadley C Studs are cold-rolled steel studs used as part of a Hadley System to create non-loadbearing internal partitions.

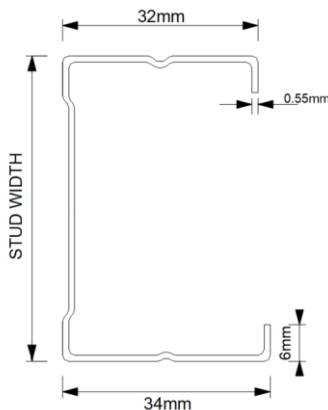
Manufactured in accordance with EN 14195:2005



Scan QR code for Hadley System **Golden Thread Documents: Technical Datasheet, Material Safety Datasheet, Declaration of Performance (DoP), O&M Manual and more...**



Product Information



Rev	Date	Comment	By	Chk	App
1.0	19/08/24	First Issue	FM	SH	JS

Width	60mm
Flange	32mm/34mm
Gauge	0.55mm
Lengths	3.0m / 3.6m
Pack Quantities	10 / 50 / 300

REACTION TO FIRE:
A1

YIELD STRENGTH:
210 (N/mm²)

SERVICE CUT OUTS:
80mm x 30mm @ 600mm Centres

SYSTEM PERFORMANCE INFORMATION:
To be installed as a part of a complete Hadley system to achieve both Fire and Acoustic performance. To understand more about our fully warranted and tested solutions, please contact our Hadley Technical Support Team.

STORAGE & HANDLING:

When installing Hadley components please ensure full PPE is used and the site is practicing a safe working environment alongside industry standards.

DISPOSAL:

Hadley Metal is fully recyclable.

SYSTEMS USED:

HadleySOLO – Single Stud System
 HadleyDUO – Twin Frame I Stud System (*used only at abutments)
 HadleyBRACE – Braced Twin Frame System
 HadleyHUSH – Single Stud System using Resilient Bars
 HadleySTAGGER – Staggered Stud System (*used only at abutments)
 HadleyLINE- Independent I Stud Lining System (*used only at abutments)

Item Code : 5299

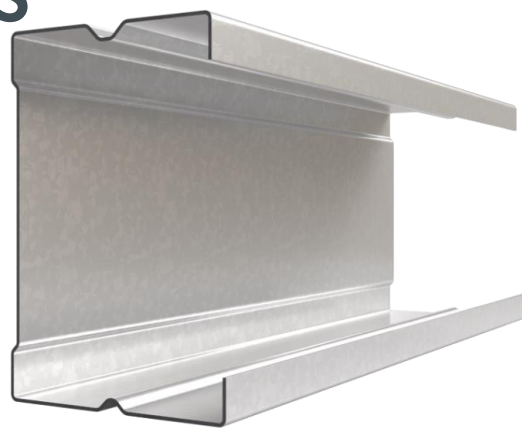
HADLEY 70mm C STUDS

Hadley C Studs are cold-rolled steel studs used as part of a Hadley System to create non-loadbearing internal partitions.

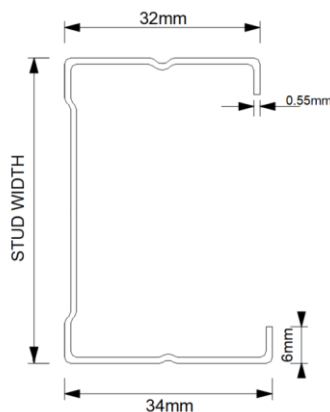
Manufactured in accordance with EN 14195:2005



Scan QR code for Hadley System **Golden Thread Documents: Technical Datasheet, Material Safety Datasheet, Declaration of Performance (DoP), O&M Manual and more...**



Product Information



Rev	Date	Comment	By	Chk	App
1.0	19/08/24	First Issue	FM	SH	JS

Width	70mm
Flange	32mm/34mm
Gauge	0.55mm
Lengths	2.4m / 2.7m / 3.0m / 3.6m / 4.2m
Pack Quantities	10 / 50 / 300

REACTION TO FIRE:
A1

YIELD STRENGTH:
210 (N/mm²)

SERVICE CUT OUTS:
80mm x 30mm @ 600mm Centres

SYSTEM PERFORMANCE INFORMATION:
To be installed as a part of a complete Hadley system to achieve both Fire and Acoustic performance. To understand more about our fully warranted and tested solutions, please contact our Hadley Technical Support Team.

STORAGE & HANDLING:

When installing Hadley components please ensure full PPE is used and the site is practicing a safe working environment alongside industry standards.

DISPOSAL:

Hadley Metal is fully recyclable.

SYSTEMS USED:

HadleySOLO – Single Stud System
 HadleyDUO – Twin Frame I Stud System (*used only at abutments)
 HadleyBRACE – Braced Twin Frame System
 HadleyHUSH – Single Stud System using Resilient Bars
 HadleySTAGGER – Staggered Stud System (*used only at abutments)
 HadleyLINE- Independent I Stud Lining System (*used only at abutments)

Item Code : 5301

HADLEY 92mm C STUDS

Hadley C Studs are cold-rolled steel studs used as part of a Hadley System to create non-loadbearing internal partitions.

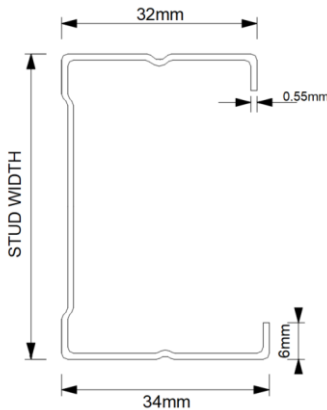
Manufactured in accordance with EN 14195:2005



Scan QR code for Hadley System **Golden Thread Documents: Technical Datasheet, Material Safety Datasheet, Declaration of Performance (DoP), O&M Manual and more...**



Product Information



REACTION TO FIRE:
A1

YIELD STRENGTH:
210 (N/mm²)

SERVICE CUT OUTS:
80mm x 30mm @ 600mm Centres

SYSTEM PERFORMANCE INFORMATION:
To be installed as a part of a complete Hadley system to achieve both Fire and Acoustic performance. To understand more about our fully warranted and tested solutions, please contact our Hadley Technical Support Team.

Rev	Date	Comment	By	Chk	App
1.0	19/08/24	First Issue	FM	SH	JS

Width	92mm
Flange	32mm/34mm
Gauge	0.55mm
Lengths	3.0m / 3.6m / 4.2m
Pack Quantities	10 / 50 / 300

STORAGE & HANDLING:

When installing Hadley components please ensure full PPE is used and the site is practicing a safe working environment alongside industry standards.

DISPOSAL:

Hadley Metal is fully recyclable.

SYSTEMS USED:

- HadleySOLO – Single Stud System
- HadleyDUO – Twin Frame I Stud System (*used only at abutments)
- HadleyBRACE – Braced Twin Frame System
- HadleyHUSH – Single Stud System using Resilient Bars
- HadleySTAGGER – Staggered Stud System (*used only at abutments)
- HadleyLINE- Independent I Stud Lining System (*used only at abutments)

Item Code : 5302

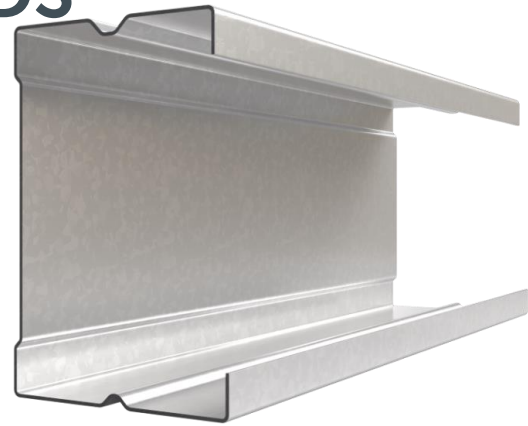
HADLEY 146mm C STUDS

Hadley C Studs are cold-rolled steel studs used as part of a Hadley System to create non-loadbearing internal partitions.

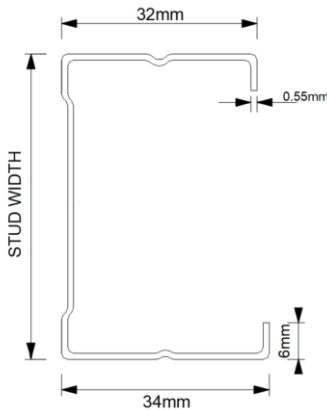
Manufactured in accordance with EN 14195:2005



Scan QR code for Hadley System **Golden Thread Documents: Technical Datasheet, Material Safety Datasheet, Declaration of Performance (DoP), O&M Manual and more...**



Product Information



Rev	Date	Comment	By	Chk	App
1.0	19/08/24	First Issue	FM	SH	JS

Width	146mm
Flange	32mm/34mm
Gauge	0.55mm
Lengths	3.6m / 4.2m / 5m / 6m
Pack Quantities	10 / 100

REACTION TO FIRE:
A1

YIELD STRENGTH:
210 (N/mm²)

SERVICE CUT OUTS:
80mm x 30mm @ 600mm Centres

SYSTEM PERFORMANCE INFORMATION:
To be installed as a part of a complete Hadley system to achieve both Fire and Acoustic performance. To understand more about our fully warranted and tested solutions, please contact our Hadley Technical Support Team.

STORAGE & HANDLING:

When installing Hadley components please ensure full PPE is used and the site is practicing a safe working environment alongside industry standards.

DISPOSAL:

Hadley Metal is fully recyclable.

SYSTEMS USED:

- HadleySOLO – Single Stud System
- HadleyDUO – Twin Frame I Stud System (*used only at abutments)
- HadleyBRACE – Braced Twin Frame System
- HadleyHUSH – Single Stud System using Resilient Bars
- HadleySTAGGER – Staggered Stud System (*used only at abutments)
- HadleyLINE- Independent I Stud Lining System (*used only at abutments)

Item Code : 5954

HADLEY 50mm I STUDS

Hadley I Studs are cold-rolled steel studs used as part of a Hadley System to create non-loadbearing internal partitions.

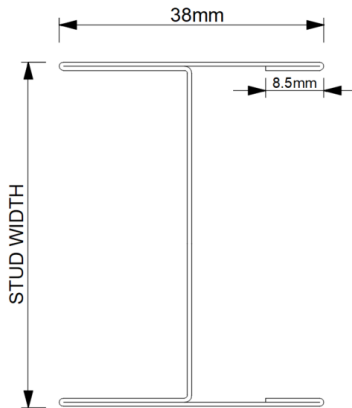
Manufactured in accordance with EN 14195:2005



Scan QR code for Hadley System **Golden Thread Documents: Technical Datasheet, Material Safety Datasheet, Declaration of Performance (DoP), O&M Manual and more...**



Product Information



Rev	Date	Comment	By	Chk	App
1.0	19/08/24	First Issue	FM	SH	JS

Width	50mm
Flange	38mm
Gauge	0.60mm
Lengths	2.7m / 3.0m / 3.6m
Pack Quantities	5 / 100

REACTION TO FIRE:
A1

YIELD STRENGTH:
210 (N/mm²)

SERVICE CUT OUTS:
50mm x 38mm @ 600mm Centres

SYSTEM PERFORMANCE INFORMATION:
To be installed as a part of a complete Hadley system to achieve both Fire and Acoustic performance. To understand more about our fully warranted and tested solutions, please contact our Hadley Technical Support Team.

STORAGE & HANDLING:

When installing Hadley components please ensure full PPE is used and the site is practicing a safe working environment alongside industry standards.

DISPOSAL:

Hadley Metal is fully recyclable.

SYSTEMS USED:

- HadleySOLO – Single Stud System
- HadleyDUO – Twin Frame I Stud System
- HadleySHAFT – Shaftwall System
- HadleyLINE – I Stud Lining System
- HadleySTAGGER – Staggered Stud System

Item Code : 5954A

HADLEY 60mm I STUDS

Hadley I Studs are cold-rolled steel studs used as part of a Hadley System to create non-loadbearing internal partitions.

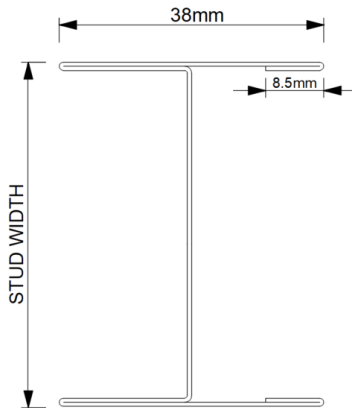
Manufactured in accordance with EN 14195:2005



Scan QR code for Hadley System **Golden Thread Documents: Technical Datasheet, Material Safety Datasheet, Declaration of Performance (DoP), O&M Manual and more...**



Product Information



Rev	Date	Comment	By	Chk	App
1.0	19/08/24	First Issue	FM	SH	JS

Width	60mm
Flange	38mm
Gauge	0.60mm
Lengths	3.0m / 3.6m
Pack Quantities	5 / 100

REACTION TO FIRE:
A1

YIELD STRENGTH:
210 (N/mm²)

SERVICE CUT OUTS:
50mm x 38mm @ 600mm Centres

SYSTEM PERFORMANCE INFORMATION:
To be installed as a part of a complete Hadley system to achieve both Fire and Acoustic performance. To understand more about our fully warranted and tested solutions, please contact our Hadley Technical Support Team.

STORAGE & HANDLING:

When installing Hadley components please ensure full PPE is used and the site is practicing a safe working environment alongside industry standards.

DISPOSAL:

Hadley Metal is fully recyclable.

SYSTEMS USED:

HadleySOLO – Single Stud System
 HadleyDUO – Twin Frame I Stud System
 HadleySHAFT – Shaftwall System
 HadleyLINE – I Stud Lining System
 HadleySTAGGER – Staggered Stud System

Item Code : 5954B

HADLEY 70mm I STUDS

Hadley I Studs are cold-rolled steel studs used as part of a Hadley System to create non-loadbearing internal partitions.

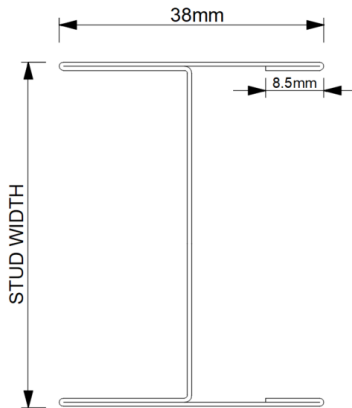
Manufactured in accordance with EN 14195:2005



Scan QR code for Hadley System **Golden Thread Documents: Technical Datasheet, Material Safety Datasheet, Declaration of Performance (DoP), O&M Manual and more...**



Product Information



Rev	Date	Comment	By	Chk	App
1.0	19/08/24	First Issue	FM	SH	JS

Width	70mm
Flange	38mm
Gauge	0.7mm
Lengths	3.0m / 4.2m
Pack Quantities	5 / 100

REACTION TO FIRE:
A1

YIELD STRENGTH:
210 (N/mm²)

SERVICE CUT OUTS:
50mm x 38mm @ 600mm Centres

SYSTEM PERFORMANCE INFORMATION:
To be installed as a part of a complete Hadley system to achieve both Fire and Acoustic performance. To understand more about our fully warranted and tested solutions, please contact our Hadley Technical Support Team.

STORAGE & HANDLING:

When installing Hadley components please ensure full PPE is used and the site is practicing a safe working environment alongside industry standards.

DISPOSAL:

Hadley Metal is fully recyclable.

SYSTEMS USED:

- HadleySOLO – Single Stud System
- HadleyDUO – Twin Frame I Stud System
- HadleySHAFT – Shaftwall System
- HadleyLINE – I Stud Lining System
- HadleySTAGGER – Staggered Stud System

Item Code : 5954C

HADLEY 92mm I STUDS

Hadley I Studs are cold-rolled steel studs used as part of a Hadley System to create non-loadbearing internal partitions.

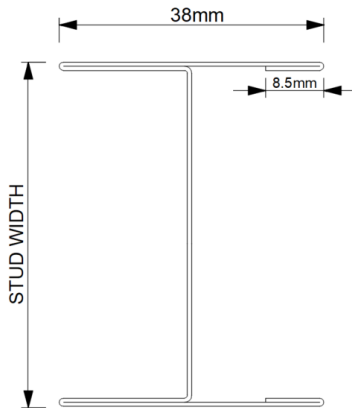
Manufactured in accordance with EN 14195:2005



Scan QR code for Hadley System **Golden Thread Documents: Technical Datasheet, Material Safety Datasheet, Declaration of Performance (DoP), O&M Manual and more...**



Product Information



Rev	Date	Comment	By	Chk	App
1.0	19/08/24	First Issue	FM	SH	JS

Width	92mm
Flange	38mm
Gauge	0.60mm
Lengths	3.0m / 3.6m / 4.2m / 5m / 6m
Pack Quantities	5 / 50

REACTION TO FIRE:
A1

YIELD STRENGTH:
210 (N/mm²)

SERVICE CUT OUTS:
50mm x 38mm @ 600mm Centres

SYSTEM PERFORMANCE INFORMATION:
To be installed as a part of a complete Hadley system to achieve both Fire and Acoustic performance. To understand more about our fully warranted and tested solutions, please contact our Hadley Technical Support Team.

STORAGE & HANDLING:

When installing Hadley components please ensure full PPE is used and the site is practicing a safe working environment alongside industry standards.

DISPOSAL:

Hadley Metal is fully recyclable.

SYSTEMS USED:

- HadleySOLO – Single Stud System
- HadleyDUO – Twin Frame I Stud System
- HadleySHAFT – Shaftwall System
- HadleyLINE – I Stud Lining System
- HadleySTAGGER – Staggered Stud System

Item Code : 5954D

HADLEY 146mm I STUDS

Hadley I Studs are cold-rolled steel studs used as part of a Hadley System to create non-loadbearing internal partitions.

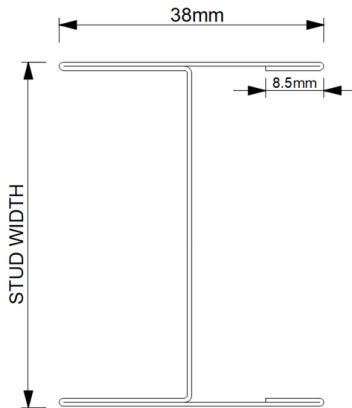
Manufactured in accordance with EN 14195:2005



Scan QR code for Hadley System **Golden Thread Documents: Technical Datasheet, Material Safety Datasheet, Declaration of Performance (DoP), O&M Manual and more...**



Product Information



Rev	Date	Comment	By	Chk	App
1.0	19/08/24	First Issue	FM	SH	JS

Width	146mm
Flange	38mm
Gauge	0.60mm
Lengths	5m / 6m
Pack Quantities	5 / 50

REACTION TO FIRE:
A1

YIELD STRENGTH:
210 (N/mm²)

SERVICE CUT OUTS:
50mm x 38mm @ 600mm Centres

SYSTEM PERFORMANCE INFORMATION:
To be installed as a part of a complete Hadley system to achieve both Fire and Acoustic performance. To understand more about our fully warranted and tested solutions, please contact our Hadley Technical Support Team.

STORAGE & HANDLING:

When installing Hadley components please ensure full PPE is used and the site is practicing a safe working environment alongside industry standards.

DISPOSAL:

Hadley Metal is fully recyclable.

SYSTEMS USED:

HadleySOLO – Single Stud System
 HadleyDUO – Twin Frame I Stud System
 HadleySHAFT – Shaftwall System
 HadleyLINE – I Stud Lining System
 HadleySTAGGER – Staggered Stud System

Item Code : 6262

HADLEY 70mm ACOUSTIC C STUDS

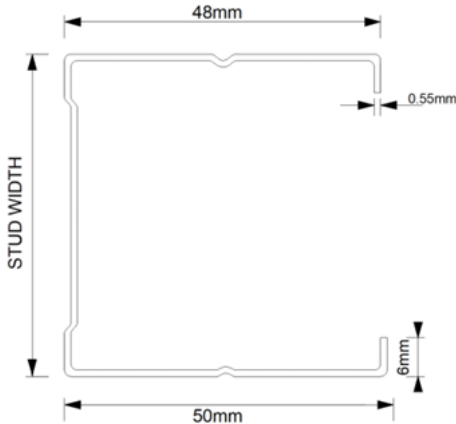
Hadley Acoustic C Studs are cold-rolled steel studs used as part of a Hadley System to create non-loadbearing internal partitions.

Manufactured in accordance with EN 14195:2005



Scan QR code for Hadley System **Golden Thread** Documents: Technical Datasheet, Material Safety Datasheet, Declaration of Performance (DoP), O&M Manual and more...

Product Information



REACTION TO FIRE:
A1

YIELD STRENGTH:
210 (N/mm²)

SERVICE CUT OUTS:
80mm x 30mm @ 600mm Centres

SYSTEM PERFORMANCE INFORMATION:
To be installed as a part of a complete Hadley system to achieve both Fire and Acoustic performance. To understand more about our fully warranted and tested solutions, please contact our Hadley Technical Support Team.

Rev	Date	Comment	By	Chk	App
1.0	19/08/24	First Issue	FM	SH	JS

Width	70mm
Flange	50mm/48mm
Gauge	0.55mm
Lengths	3.0m / 4.2m
Pack Quantities	10 / 50 / 200

STORAGE & HANDLING:

When installing Hadley components please ensure full PPE is used and the site is practicing a safe working environment alongside industry standards.

DISPOSAL:

Hadley Metal is fully recyclable.

SYSTEMS USED:

HadleySOLO – Single Stud System
 HadleyDUO – Twin Frame I Stud System (*used only at abutments)
 HadleyBRACE – Braced Twin Frame System
 HadleyHUSH – Single Stud System using Resilient Bars
 HadleySTAGGER – Staggered Stud System (*used only at abutments)
 HadleyLINE- Independent I Stud Lining System (*used only at abutments)

Item Code : 6262A

HADLEY 92mm ACOUSTIC C STUDS

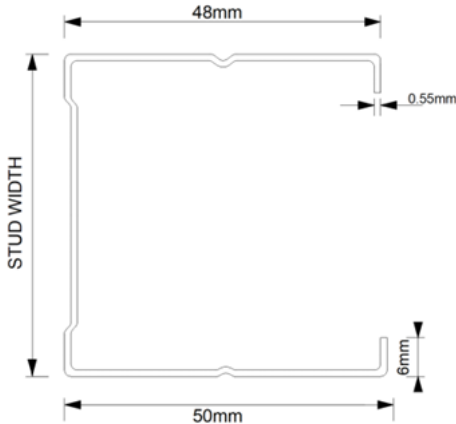
Hadley Acoustic C Studs are cold-rolled steel studs used as part of a Hadley System to create non-loadbearing internal partitions.

Manufactured in accordance with EN 14195:2005



Scan QR code for Hadley System **Golden Thread** Documents: Technical Datasheet, Material Safety Datasheet, Declaration of Performance (DoP), O&M Manual and more...

Product Information



REACTION TO FIRE:
A1

YIELD STRENGTH:
210 (N/mm²)

SERVICE CUT OUTS:
80mm x 30mm @ 600mm Centres

SYSTEM PERFORMANCE INFORMATION:
To be installed as a part of a complete Hadley system to achieve both Fire and Acoustic performance. To understand more about our fully warranted and tested solutions, please contact our Hadley Technical Support Team.

Rev	Date	Comment	By	Chk	App
1.0	19/08/24	First Issue	FM	SH	JS

Width	92mm
Flange	50mm/48mm
Gauge	0.55mm
Lengths	3.0m / 4.2m
Pack Quantities	10 / 50 / 200

STORAGE & HANDLING:

When installing Hadley components please ensure full PPE is used and the site is practicing a safe working environment alongside industry standards.

DISPOSAL:

Hadley Metal is fully recyclable.

SYSTEMS USED:

- HadleySOLO – Single Stud System
- HadleyDUO – Twin Frame I Stud System (*used only at abutments)
- HadleyBRACE – Braced Twin Frame System
- HadleyHUSH – Single Stud System using Resilient Bars
- HadleySTAGGER – Staggered Stud System (*used only at abutments)
- HadleyLINE- Independent I Stud Lining System (*used only at abutments)

Item Code : 5305

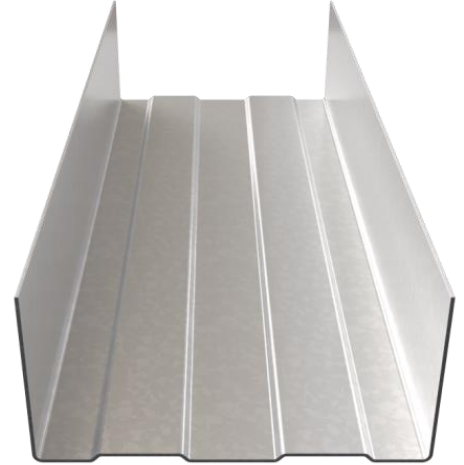
HADLEY 52mm Track

Hadley Tracks (U Channels) are cold-rolled steel Tracks used mainly at the head and base junctions of Hadley system to create non-loadbearing internal partitions.

Manufactured in accordance with EN 14195:2005

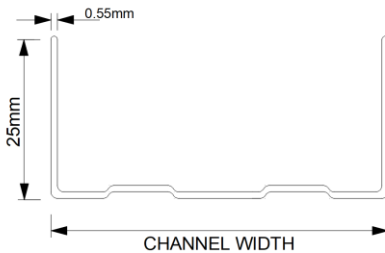


Scan QR code for Hadley System **Golden Thread Documents: Technical Datasheet, Material Safety Datasheet, Declaration of Performance (DoP), O&M Manual and more...**



Product Information

Rev	Date	Comment	By	Chk	App
1.0	19/08/24	First Issue	FM	SH	JS



Width	52mm
Flange	25mm
Gauge	0.55mm
Lengths	3m
Pack Quantities	10 / 50 / 200 / 1000

REACTION TO FIRE:
A1

YIELD STRENGTH:
210 (N/mm²)

SERVICE CUT OUTS:
N/A

SYSTEM PERFORMANCE INFORMATION:
To be installed as a part of a complete Hadley system to achieve both Fire and Acoustic performance. To understand more about our fully warranted and tested solutions, please contact our Hadley Technical Support Team.

STORAGE & HANDLING:

When installing Hadley components please ensure full PPE is used and the site is practicing a safe working environment alongside industry standards.

DISPOSAL:

Hadley Metal is fully recyclable.

SYSTEMS USED:

- HadleySOLO – Single Stud System
- HadleyHUSH– Single Stud with Resilient Bar System
- HadleyDUO – Twin Frame I Stud System
- HadleySHAFT – Shaftwall System
- HadleyBRACE – Twin Framed braced C Stud System
- HadleyLINE – Independent Lining System

Item Code : 581B

HADLEY 62mm Track

Hadley Tracks (U Channels) are cold-rolled steel Tracks used mainly at the head and base junctions of Hadley System to create non-loadbearing internal partitions.

Manufactured in accordance with EN 14195:2005

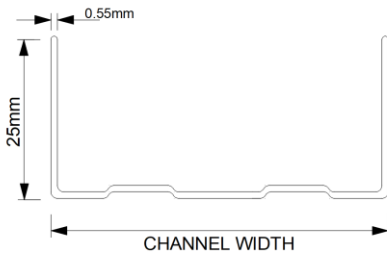


Scan QR code for Hadley System **Golden Thread Documents: Technical Datasheet, Material Safety Datasheet, Declaration of Performance (DoP), O&M Manual and more...**



Product Information

Rev	Date	Comment	By	Chk	App
1.0	19/08/24	First Issue	FM	SH	JS



Width	62mm
Flange	25mm
Gauge	0.55mm
Lengths	3m
Pack Quantities	10 / 100 / 300

REACTION TO FIRE:
A1

YIELD STRENGTH:
210 (N/mm²)

SERVICE CUT OUTS:
N/A

SYSTEM PERFORMANCE INFORMATION:
To be installed as a part of a complete Hadley system to achieve both Fire and Acoustic performance. To understand more about our fully warranted and tested solutions, please contact our Hadley Technical Support Team.

STORAGE & HANDLING:

When installing Hadley components please ensure full PPE is used and the site is practicing a safe working environment alongside industry standards.

DISPOSAL:

Hadley Metal is fully recyclable.

SYSTEMS USED:

HadleySOLO – Single Stud System
 HadleyHUSH– Single Stud with Resilient Bar System
 HadleyDUO – Twin Frame I Stud System
 HadleySHAFT – Shaftwall System
 HadleyBRACE – Twin Framed braced C Stud System
 HadleyLINE – Independent Lining System

Item Code : 5307

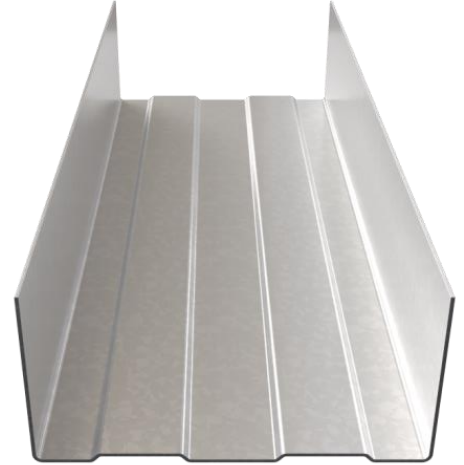
HADLEY 72mm Track

Hadley Tracks (U Channels) are cold-rolled steel Tracks used mainly at the head and base junctions of Hadley System to create non-loadbearing internal partitions.

Manufactured in accordance with EN 14195:2005

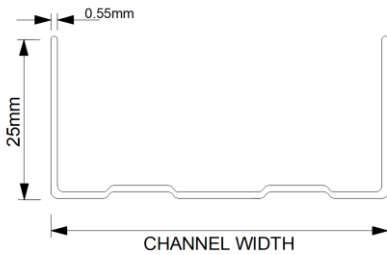


Scan QR code for Hadley System **Golden Thread Documents: Technical Datasheet, Material Safety Datasheet, Declaration of Performance (DoP), O&M Manual and more...**



Product Information

Rev	Date	Comment	By	Chk	App
1.0	19/08/24	First Issue	FM	SH	JS



Width	72mm
Flange	25mm
Gauge	0.55mm
Lengths	3m
Pack Quantities	10 / 50 / 300 / 600

REACTION TO FIRE:
A1

YIELD STRENGTH:
210 (N/mm²)

SERVICE CUT OUTS:
N/A

SYSTEM PERFORMANCE INFORMATION:
To be installed as a part of a complete Hadley system to achieve both Fire and Acoustic performance. To understand more about our fully warranted and tested solutions, please contact our Hadley Technical Support Team.

STORAGE & HANDLING:

When installing Hadley components please ensure full PPE is used and the site is practicing a safe working environment alongside industry standards.

DISPOSAL:

Hadley Metal is fully recyclable.

SYSTEMS USED:

HadleySOLO – Single Stud System
 HadleyHUSH– Single Stud with Resilient Bar System
 HadleyDUO – Twin Frame I Stud System
 HadleySHAFT – Shaftwall System
 HadleyBRACE – Twin Framed braced C Stud System
 HadleyLINE – Independent Lining System

Item Code : 5309

HADLEY 94mm Track

Hadley Tracks (U Channels) are cold-rolled steel Tracks used mainly at the head and base junctions of Hadley System to create non-loadbearing internal partitions.

Manufactured in accordance with EN 14195:2005

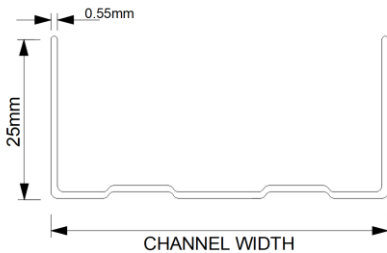


Scan QR code for Hadley System **Golden Thread Documents: Technical Datasheet, Material Safety Datasheet, Declaration of Performance (DoP), O&M Manual and more...**



Product Information

Rev	Date	Comment	By	Chk	App
1.0	19/08/24	First Issue	FM	SH	JS



Width	94mm
Flange	25mm
Gauge	0.55mm
Lengths	3m
Pack Quantities	10 / 50 / 300

REACTION TO FIRE:
A1

YIELD STRENGTH:
210 (N/mm²)

SERVICE CUT OUTS:
N/A

SYSTEM PERFORMANCE INFORMATION:
To be installed as a part of a complete Hadley system to achieve both Fire and Acoustic performance. To understand more about our fully warranted and tested solutions, please contact our Hadley Technical Support Team.

STORAGE & HANDLING:

When installing Hadley components please ensure full PPE is used and the site is practicing a safe working environment alongside industry standards.

DISPOSAL:

Hadley Metal is fully recyclable.

SYSTEMS USED:

HadleySOLO – Single Stud System
 HadleyHUSH– Single Stud with Resilient Bar System
 HadleyDUO – Twin Frame I Stud System
 HadleySHAFT – Shaftwall System
 HadleyBRACE – Twin Framed braced C Stud System
 HadleyLINE – Independent Lining System

Item Code : 5310B

HADLEY 148mm Track

Hadley Tracks (U Channels) are cold-rolled steel Tracks used mainly at the head and base junctions of Hadley System to create non-loadbearing internal partitions.

Manufactured in accordance with EN 14195:2005

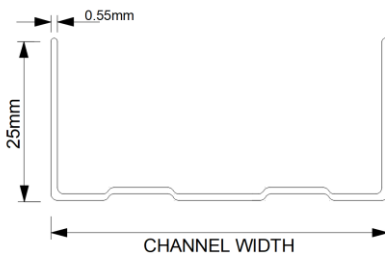


Scan QR code for Hadley System **Golden Thread Documents: Technical Datasheet, Material Safety Datasheet, Declaration of Performance (DoP), O&M Manual and more...**



Product Information

Rev	Date	Comment	By	Chk	App
1.0	19/08/24	First Issue	FM	SH	JS



Width	148mm
Flange	25mm
Gauge	0.55mm
Lengths	3m
Pack Quantities	10 / 80 / 160

REACTION TO FIRE:
A1

YIELD STRENGTH:
210 (N/mm²)

SERVICE CUT OUTS:
N/A

SYSTEM PERFORMANCE INFORMATION:
To be installed as a part of a complete Hadley system to achieve both Fire and Acoustic performance. To understand more about our fully warranted and tested solutions, please contact our Hadley Technical Support Team.

STORAGE & HANDLING:

When installing Hadley components please ensure full PPE is used and the site is practicing a safe working environment alongside industry standards.

DISPOSAL:

Hadley Metal is fully recyclable.

SYSTEMS USED:

HadleySOLO – Single Stud System
 HadleyHUSH– Single Stud with Resilient Bar System
 HadleyDUO – Twin Frame I Stud System
 HadleySHAFT – Shaftwall System
 HadleyBRACE – Twin Framed braced C Stud System
 HadleyLINE – Independent Lining System

Item Code : 5305B

HADLEY 52mm Deep Track

Hadley Tracks (U Channels) are cold-rolled steel Tracks used mainly at the head and base junctions of Hadley System to create non-loadbearing internal partitions.

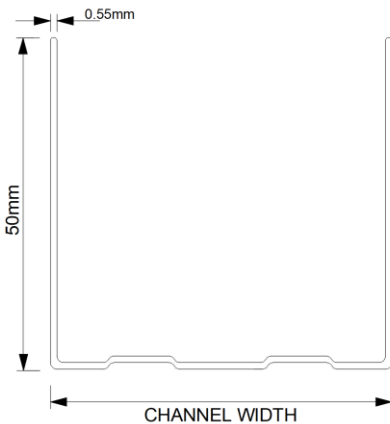
Manufactured in accordance with EN 14195:2005



Scan QR code for Hadley System **Golden Thread** Documents: Technical Datasheet, Material Safety Datasheet, Declaration of Performance (DoP), O&M Manual and more...



Product Information



Rev	Date	Comment	By	Chk	App
1.0	19/08/24	First Issue	FM	SH	JS

Flange	50mm
Width	52mm
Gauge	0.55mm
Lengths	3m
Pack Quantities	10 / 50 / 150 / 600

REACTION TO FIRE:
A1

YIELD STRENGTH:
210 (N/mm²)

SERVICE CUT OUTS:
N/A

SYSTEM PERFORMANCE INFORMATION:
To be installed as a part of a complete Hadley system to achieve both Fire and Acoustic performance. To understand more about our fully warranted and tested solutions, please contact our Hadley Technical Support Team.

STORAGE & HANDLING:

When installing Hadley components please ensure full PPE is used and the site is practicing a safe working environment alongside industry standards.

DISPOSAL:

Hadley Metal is fully recyclable.

SYSTEMS USED:

HadleySOLO – Single Stud System
 HadleyHUSH– Single Stud with Resilient Bar System
 HadleyDUO – Twin Frame I Stud System
 HadleySHAFT – Shaftwall System
 HadleyBRACE – Twin Framed braced C Stud System
 HadleyLINE – Independent Lining System

Item Code : 581

HADLEY 62mm Deep Track

Hadley Tracks (U Channels) are cold-rolled steel Tracks used mainly at the head and base junctions of Hadley System to create non-loadbearing internal partitions.

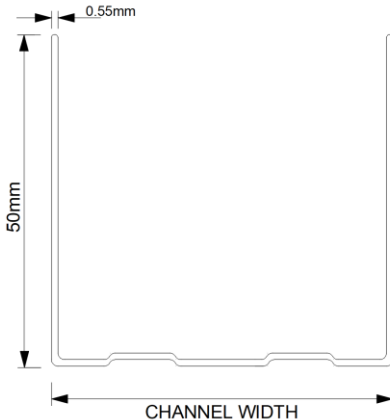
Manufactured in accordance with EN 14195:2005



Scan QR code for Hadley System **Golden Thread** Documents: Technical Datasheet, Material Safety Datasheet, Declaration of Performance (DoP), O&M Manual and more...



Product Information



Rev	Date	Comment	By	Chk	App
1.0	19/08/24	First Issue	FM	SH	JS

Flange	50mm
Width	62mm
Gauge	0.55mm
Lengths	3m
Pack Quantities	10 / 100

REACTION TO FIRE:
A1

YIELD STRENGTH:
210 (N/mm²)

SERVICE CUT OUTS:
N/A

SYSTEM PERFORMANCE INFORMATION:
To be installed as a part of a complete Hadley system to achieve both Fire and Acoustic performance. To understand more about our fully warranted and tested solutions, please contact our Hadley Technical Support Team.

STORAGE & HANDLING:

When installing Hadley components please ensure full PPE is used and the site is practicing a safe working environment alongside industry standards.

DISPOSAL:

Hadley Metal is fully recyclable.

SYSTEMS USED:

HadleySOLO – Single Stud System
 HadleyHUSH– Single Stud with Resilient Bar System
 HadleyDUO – Twin Frame I Stud System
 HadleySHAFT – Shaftwall System
 HadleyBRACE – Twin Framed braced C Stud System
 HadleyLINE – Independent Lining System

Item Code : 669

HADLEY 72mm Deep Track

Hadley Tracks (U Channels) are cold-rolled steel Tracks used mainly at the head and base junctions of Hadley System to create non-loadbearing internal partitions.

Manufactured in accordance with EN 14195:2005

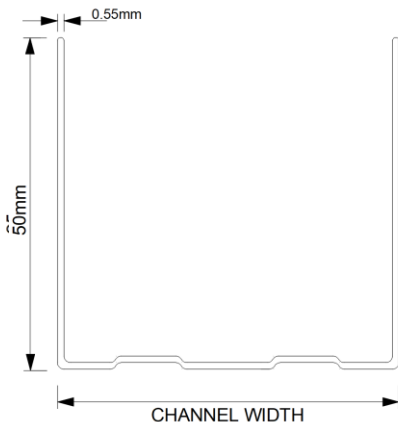


Scan QR code for Hadley System **Golden Thread** Documents: Technical Datasheet, Material Safety Datasheet, Declaration of Performance (DoP), O&M Manual and more...



Product Information

Rev	Date	Comment	By	Chk	App
1.0	19/08/24	First Issue	FM	SH	JS



Flange	50mm
Width	72mm
Gauge	0.55mm
Lengths	3m
Pack Quantities	10 / 50 / 450

REACTION TO FIRE:
A1

YIELD STRENGTH:
210 (N/mm²)

SERVICE CUT OUTS:
N/A

SYSTEM PERFORMANCE INFORMATION:
To be installed as a part of a complete Hadley system to achieve both Fire and Acoustic performance. To understand more about our fully warranted and tested solutions, please contact our Hadley Construction Technology Team.

STORAGE & HANDLING:

When installing Hadley components please ensure full PPE is used and the site is practicing a safe working environment alongside industry standards.

DISPOSAL:

Hadley Metal is fully recyclable.

SYSTEMS USED:

HadleySOLO – Single Stud System
 HadleyHUSH– Single Stud with Resilient Bar System
 HadleyDUO – Twin Frame I Stud System
 HadleySHAFT – Shaftwall System
 HadleyBRACE – Twin Framed braced C Stud System
 HadleyLINE – Independent Lining System

Item Code : 850

HADLEY 94mm Deep Track

Hadley Tracks (U Channels) are cold-rolled steel Tracks used mainly at the head and base junctions of Hadley System to create non-loadbearing internal partitions.

Manufactured in accordance with EN 14195:2005

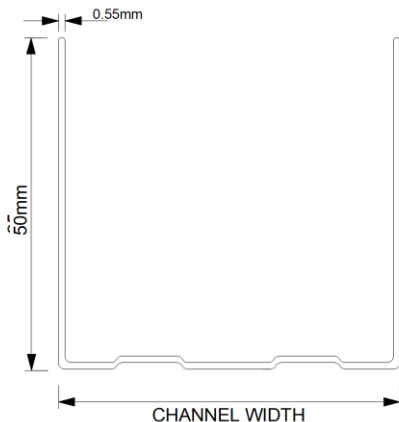


Scan QR code for Hadley System **Golden Thread** Documents: Technical Datasheet, Material Safety Datasheet, Declaration of Performance (DoP), O&M Manual and more...



Product Information

Rev	Date	Comment	By	Chk	App
1.0	19/08/24	First Issue	FM	SH	JS



Flange	50mm
Width	94mm
Gauge	0.55mm
Lengths	3m
Pack Quantities	10 / 50 / 200

REACTION TO FIRE:
A1

YIELD STRENGTH:
210 (N/mm²)

SERVICE CUT OUTS:
N/A

SYSTEM PERFORMANCE INFORMATION:
To be installed as a part of a complete Hadley system to achieve both Fire and Acoustic performance. To understand more about our fully warranted and tested solutions, please contact our Hadley Construction Technology Team.

STORAGE & HANDLING:

When installing Hadley components please ensure full PPE is used and the site is practicing a safe working environment alongside industry standards.

DISPOSAL:

Hadley Metal is fully recyclable.

SYSTEMS USED:

HadleySOLO – Single Stud System
 HadleyHUSH– Single Stud with Resilient Bar System
 HadleyDUO – Twin Frame I Stud System
 HadleySHAFT – Shaftwall System
 HadleyBRACE – Twin Framed braced C Stud System
 HadleyLINE – Independent Lining System

Item Code : 5310A

HADLEY 148mm Deep Track

Hadley Tracks (U Channels) are cold-rolled steel Tracks used mainly at the head and base junctions of Hadley System to create non-loadbearing internal partitions.

Manufactured in accordance with EN 14195:2005

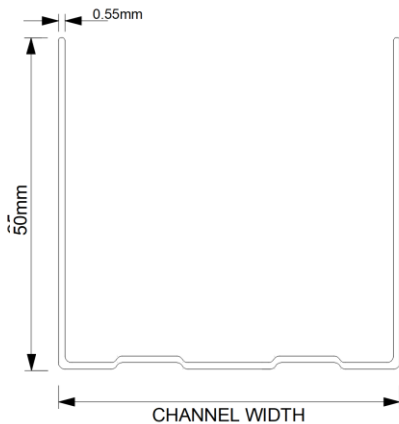


Scan QR code for Hadley System **Golden Thread** Documents: Technical Datasheet, Material Safety Datasheet, Declaration of Performance (DoP), O&M Manual and more...



Product Information

Rev	Date	Comment	By	Chk	App
1.0	19/08/24	First Issue	FM	SH	JS



Flange	50mm
Width	148mm
Gauge	0.55mm
Lengths	3m
Pack Quantities	10 / 100

REACTION TO FIRE:
A1

YIELD STRENGTH:
210 (N/mm²)

SERVICE CUT OUTS:
N/A

SYSTEM PERFORMANCE INFORMATION:
To be installed as a part of a complete Hadley system to achieve both Fire and Acoustic performance. To understand more about our fully warranted and tested solutions, please contact our Hadley Technical Support Team.

STORAGE & HANDLING:

When installing Hadley components please ensure full PPE is used and the site is practicing a safe working environment alongside industry standards.

DISPOSAL:

Hadley Metal is fully recyclable.

SYSTEMS USED:

HadleySOLO – Single Stud System
 HadleyHUSH– Single Stud with Resilient Bar System
 HadleyDUO – Twin Frame I Stud System
 HadleySHAFT – Shaftwall System
 HadleyBRACE – Twin Framed braced C Stud System
 HadleyLINE – Independent Lining System

Item Code : 782

HADLEY 72mm Extra Deep Track

Hadley Extra Deep Tracks (U Channel) are cold-rolled Steel Tracks used mainly at the head and base junctions of Hadley Systems to create non-loadbearing internal partitions.

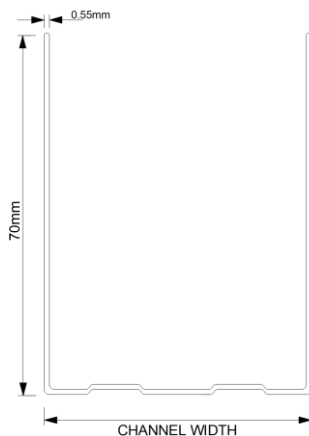
Manufactured in accordance with EN 14195:2005



Scan QR code for Hadley System **Golden Thread** Documents: Technical Datasheet, Material Safety Datasheet, Declaration of Performance (DoP), O&M Manual and more...



Product Information



Rev	Date	Comment	By	Chk	App
1.0	19/08/24	First Issue	FM	SH	JS

Flange	70mm
Width	94mm
Gauge	0.55mm
Lengths	3m
Pack Quantities	10 / 100

REACTION TO FIRE:
A1

YIELD STRENGTH:
210 (N/mm²)

SERVICE CUT OUTS:
N/A

SYSTEM PERFORMANCE INFORMATION:
To be installed as a part of a complete Hadley system to achieve both Fire and Acoustic performance. To understand more about our fully warranted and tested solutions, please contact our Hadley Construction Technology Team.

STORAGE & HANDLING:

When installing Hadley components please ensure full PPE is used and the site is practicing a safe working environment alongside industry standards.

DISPOSAL:

Hadley Metal is fully recyclable.

SYSTEMS USED:

HadleySOLO – Single Stud System
 HadleyHUSH– Single Stud with Resilient Bar System
 HadleyDUO – Twin Frame I Stud System
 HadleySHAFT – Shaftwall System
 HadleyBRACE – Twin Framed braced C Stud System
 HadleyLINE – Independent Lining System

Item Code : 783

HADLEY 94mm Extra Deep Track

Hadley Extra Deep Tracks (U Channel) are cold-rolled Steel Tracks used mainly at the head and base junctions of Hadley Systems to create non-loadbearing internal partitions.

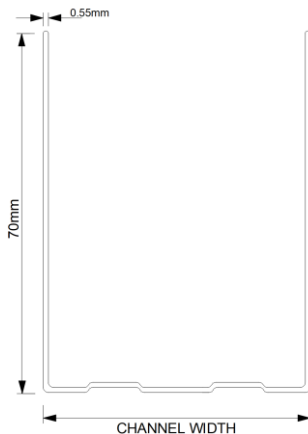
Manufactured in accordance with EN 14195:2005



Scan QR code for Hadley System **Golden Thread** Documents: Technical Datasheet, Material Safety Datasheet, Declaration of Performance (DoP), O&M Manual and more...



Product Information



Rev	Date	Comment	By	Chk	App
1.0	19/08/24	First Issue	FM	SH	JS

Flange	70mm
Width	94mm
Gauge	0.55mm
Lengths	3m
Pack Quantities	10 / 100

REACTION TO FIRE:
A1

YIELD STRENGTH:
210 (N/mm²)

SERVICE CUT OUTS:
N/A

SYSTEM PERFORMANCE INFORMATION:
To be installed as a part of a complete Hadley system to achieve both Fire and Acoustic performance. To understand more about our fully warranted and tested solutions, please contact our Hadley Construction Technology Team.

STORAGE & HANDLING:

When installing Hadley components please ensure full PPE is used and the site is practicing a safe working environment alongside industry standards.

DISPOSAL:

Hadley Metal is fully recyclable.

SYSTEMS USED:

- HadleySOLO – Single Stud System
- HadleyHUSH– Single Stud with Resilient Bar System
- HadleyDUO – Twin Frame I Stud System
- HadleySHAFT – Shaftwall System
- HadleyBRACE – Twin Framed braced C Stud System
- HadleyLINE – Independent Lining System

Item Code : 784

HADLEY 148mm Extra Deep Track

Hadley Extra Deep Tracks (U Channel) are cold-rolled Steel Tracks used mainly at the head and base junctions of Hadley Systems to create non-loadbearing internal partitions.

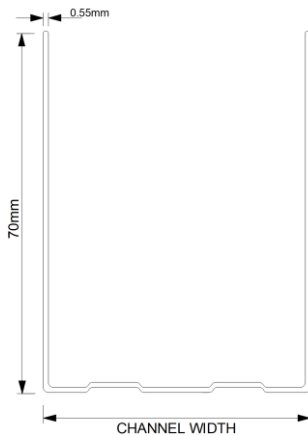
Manufactured in accordance with EN 14195:2005



Scan QR code for Hadley System **Golden Thread** Documents: Technical Datasheet, Material Safety Datasheet, Declaration of Performance (DoP), O&M Manual and more...



Product Information



Rev	Date	Comment	By	Chk	App
1.0	19/08/24	First Issue	FM	SH	JS

Flange	70mm
Width	148mm
Gauge	0.55mm
Lengths	3m
Pack Quantities	10 / 100

REACTION TO FIRE:
A1

YIELD STRENGTH:
210 (N/mm²)

SERVICE CUT OUTS:
N/A

SYSTEM PERFORMANCE INFORMATION:
To be installed as a part of a complete Hadley system to achieve both Fire and Acoustic performance. To understand more about our fully warranted and tested solutions, please contact our Hadley Construction Technology Team.

STORAGE & HANDLING:

When installing Hadley components please ensure full PPE is used and the site is practicing a safe working environment alongside industry standards.

DISPOSAL:

Hadley Metal is fully recyclable.

SYSTEMS USED:

HadleySOLO – Single Stud System
 HadleyHUSH– Single Stud with Resilient Bar System
 HadleyDUO – Twin Frame I Stud System
 HadleySHAFT – Shaftwall System
 HadleyBRACE – Twin Framed braced C Stud System
 HadleyLINE – Independent Lining System

Item Code : 2206A

HADLEY LINER STUD

Hadley Liner Stud is used as the vertical studs on our HadleySHIELD system.

Manufactured in accordance with EN 14195:2005



Scan QR code for Hadley System **Golden Thread Documents: Technical Datasheet, Material Safety Datasheet, Declaration of Performance (DoP), O&M Manual and more...**

Product Information



Rev	Date	Comment	By	Chk	App
1.0	19/08/24	First Issue	FM	SH	JS

Width	45mm
Flange	18mm
Gauge	0.5mm
Lengths	2.4m / 2.7m / 3m / 3.6m
Pack Quantities	10 / 500

REACTION TO FIRE:
A1

SERVICE CUT OUTS:
N/A

SYSTEM PERFORMANCE INFORMATION:
To be installed as a part of a complete Hadley system to achieve both Fire and Acoustic performance. To understand more about our fully warranted and tested solutions, please contact our Hadley Construction Technology Team.

STORAGE & HANDLING:

When installing Hadley components please ensure full PPE is used and the site is practicing a safe working environment alongside industry standards.

DISPOSAL:

Hadley Metal is fully recyclable.

SYSTEMS USED:

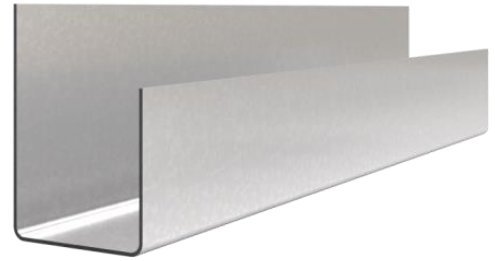
HadleySHIELD – Wall Lining System

Item Code : 5217

HADLEY LINER TRACK

Hadley Liner Track is secured to the head and base of HadleySHIELD system to receive ends of Hadley Liner Studs.

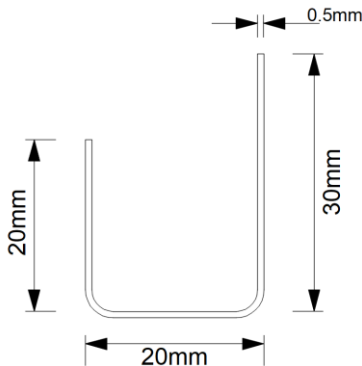
Manufactured in accordance with EN 14195:2005



Scan QR code for Hadley System **Golden Thread** Documents: Technical Datasheet, Material Safety Datasheet, Declaration of Performance (DoP), O&M Manual and more...

Product Information

Rev	Date	Comment	By	Chk	App
1.0	19/08/24	First Issue	FM	SH	JS



Width	20mm
Flange	20mm / 30mm
Gauge	0.5mm
Lengths	3m / 3.6m
Pack Quantities	10 / 100 / 500

REACTION TO FIRE:
A1

SERVICE CUT OUTS:
N/A

SYSTEM PERFORMANCE INFORMATION:
To be installed as a part of a complete Hadley system to achieve both Fire and Acoustic performance. To understand more about our fully warranted and tested solutions, please contact our Hadley Construction Technology Team.

STORAGE & HANDLING:

When installing Hadley components please ensure full PPE is used and the site is practicing a safe working environment alongside industry standards.

DISPOSAL:

Hadley Metal is fully recyclable.

SYSTEMS USED:

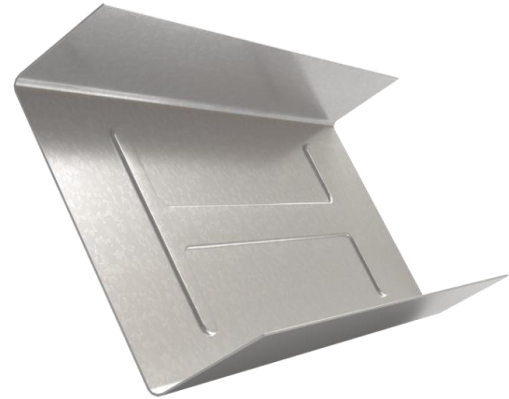
HadleySHIELD – Wall Lining System

Item Code : 5262

HADLEY LINER CONNECTOR

Hadley Liner Connector is used to safely splice the Hadley Liner Track when using our HadleySHIELD system.

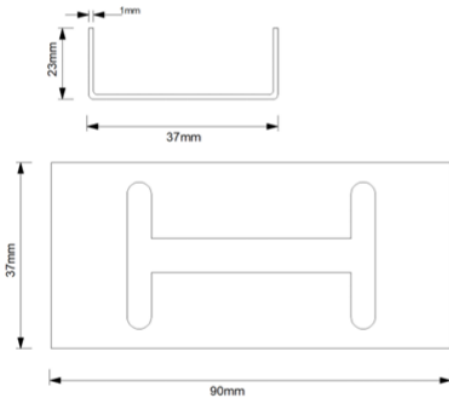
Manufactured in accordance with EN 14195:2005



Scan QR code for Hadley System **Golden Thread Documents: Technical Datasheet, Material Safety Datasheet, Declaration of Performance (DoP), O&M Manual and more...**

Product Information

Rev	Date	Comment	By	Chk	App
1.0	19/08/24	First Issue	FM	SH	JS



Width	42.6mm
Flange	16mm
Length	90mm
Gauge	0.5mm
Pack Quantities	100

REACTION TO FIRE:
A1

SERVICE CUT OUTS:
N/A

SYSTEM PERFORMANCE INFORMATION:
To be installed as a part of a complete Hadley system to achieve both Fire and Acoustic performance. To understand more about our fully warranted and tested solutions, please contact our Hadley Construction Technology Team.

STORAGE & HANDLING:

When installing Hadley components please ensure full PPE is used and the site is practicing a safe working environment alongside industry standards.

DISPOSAL:

Hadley Metal is fully recyclable.

SYSTEMS USED:

HadleySHIELD – Wall Lining System

Item Code : 1900

HADLEY ANGLE (25mm x 25mm)

Hadley Angle is used as part of a Hadley System to create non-loadbearing internal partitions.

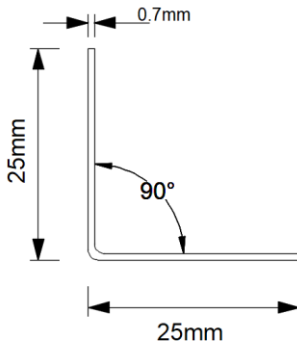
Manufactured in accordance with EN 14195:2005



Scan QR code for Hadley System **Golden Thread** Documents: Technical Datasheet, Material Safety Datasheet, Declaration of Performance (DoP), O&M Manual and more...

Product Information

Rev	Date	Comment	By	Chk	App
1.0	19/08/24	First Issue	FM	SH	JS



Size	25mm x 25mm
Gauge	0.7mm
Lengths	3.0m / 3.6m
Pack Quantities	20 / 500

REACTION TO FIRE:
A1

SERVICE CUT OUTS:
N/A

SYSTEM PERFORMANCE INFORMATION:
To be installed as a part of a complete Hadley system to achieve both Fire and Acoustic performance. To understand more about our fully warranted and tested solutions, please contact our Hadley Construction Technology Team.

STORAGE & HANDLING:

When installing Hadley components please ensure full PPE is used and the site is practicing a safe working environment alongside industry standards.

DISPOSAL:

Hadley Metal is fully recyclable.

SYSTEMS USED:

All Hadley Systems

Item Code : 2012

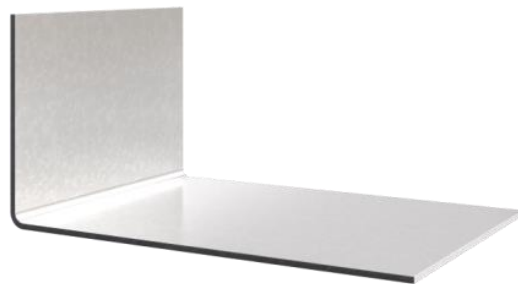
HADLEY ANGLE (50mm x 25mm)

Hadley Angle is used as part of a Hadley System to create non-loadbearing internal partitions.

Manufactured in accordance with EN 14195:2005

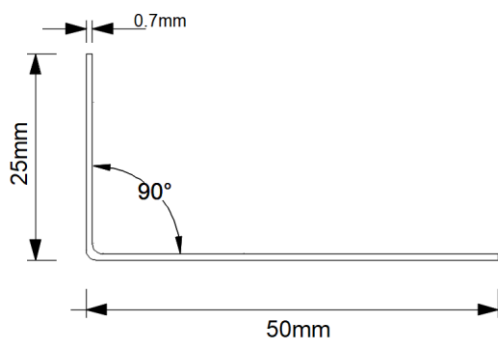


Scan QR code for Hadley System **Golden Thread Documents: Technical Datasheet, Material Safety Datasheet, Declaration of Performance (DoP), O&M Manual and more...**



Product Information

Rev	Date	Comment	By	Chk	App
1.0	19/08/24	First Issue	FM	SH	JS



Size	50mm x 25mm
Gauge	0.7mm
Lengths	3.0m / 3.6m
Pack Quantities	10 / 200

REACTION TO FIRE:
A1

SERVICE CUT OUTS:
N/A

SYSTEM PERFORMANCE INFORMATION:
To be installed as a part of a complete Hadley system to achieve both Fire and Acoustic performance. To understand more about our fully warranted and tested solutions, please contact our Hadley Construction Technology Team.

STORAGE & HANDLING:
When installing Hadley components please ensure full PPE is used and the site is practicing a safe working environment alongside industry standards.

DISPOSAL:
Hadley Metal is fully recyclable.

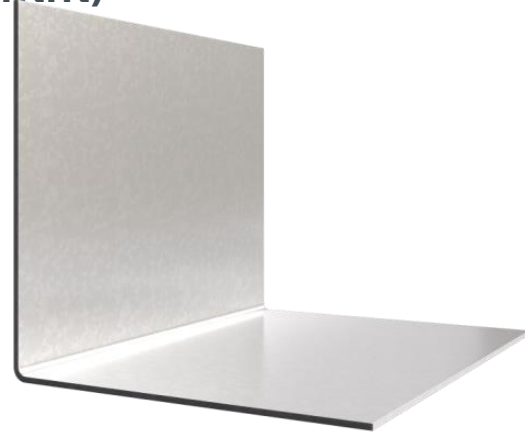
SYSTEMS USED:
All Hadley Systems

Item Code : 1901

HADLEY ANGLE (50mm x 50mm)

Hadley Angle is used as part of a Hadley System to create non-loadbearing internal partitions.

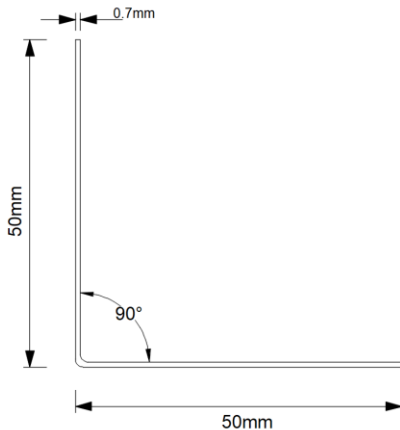
Manufactured in accordance with EN 14195:2005



Scan QR code for Hadley System **Golden Thread Documents: Technical Datasheet, Material Safety Datasheet, Declaration of Performance (DoP), O&M Manual and more...**

Product Information

Rev	Date	Comment	By	Chk	App
1.0	19/08/24	First Issue	FM	SH	JS



Size	50mm x 50mm
Gauge	0.7mm
Lengths	3.0m / 3.6m
Pack Quantities	10 / 200

REACTION TO FIRE:
A1

SERVICE CUT OUTS:
N/A

SYSTEM PERFORMANCE INFORMATION:
To be installed as a part of a complete Hadley system to achieve both Fire and Acoustic performance. To understand more about our fully warranted and tested solutions, please contact our Hadley Construction Technology Team.

STORAGE & HANDLING:

When installing Hadley components please ensure full PPE is used and the site is practicing a safe working environment alongside industry standards.

DISPOSAL:

Hadley Metal is fully recyclable.

SYSTEMS USED:

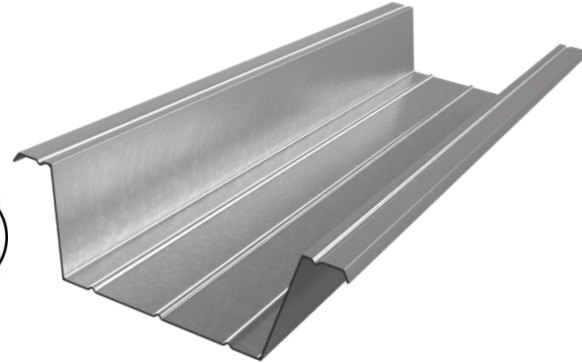
All Hadley Systems

Item Code : 988

HADLEY CEILING FURRING MF5

Hadley Ceiling Furring Channel MF5 is used as the secondary channel within our HadleyMF Ceiling System to allow for plasterboard fixings. Fixed to Hadley MF7 Primary Channels.

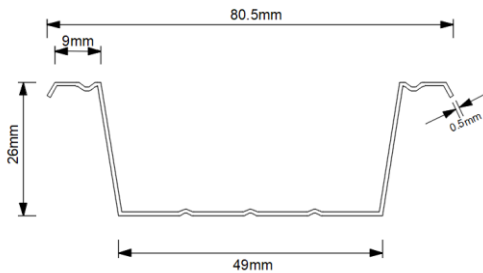
Manufactured in accordance with EN 14195:2005



Scan QR code for Hadley System **Golden Thread** Documents: Technical Datasheet, Material Safety Datasheet, Declaration of Performance (DoP), O&M Manual and more...

Product Information

Rev	Date	Comment	By	Chk	App
1.0	19/08/24	First Issue	FM	SH	JS



Depth	26mm
Width	80.5mm
Gauge	0.5mm
Lengths	3.6m
Pack Quantities	25 / 100 / 200

REACTION TO FIRE:
A1

SERVICE CUT OUTS:
N/A

SYSTEM PERFORMANCE INFORMATION:
For performance information on our Hadley systems please contact Hadley Construction Technology Team.

STORAGE & HANDLING:

When installing Hadley components please ensure full PPE is used and the site is practicing a safe working environment alongside industry standards.

DISPOSAL:

Hadley Metal is fully recyclable.

SYSTEMS USED:

HadleyMF - Ceiling System

Item Code : 989

HADLEY PERIMETER CHANNEL MF6A

Hadley Perimeter Channel MF6A is installed into the perimeter of the substrate to receive ends of of MF5 Secondary Channel Sections.

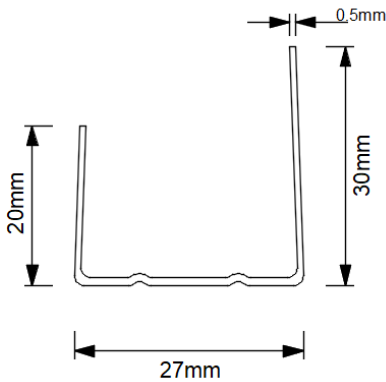
Manufactured in accordance with EN 14195:2005



Scan QR code for Hadley System **Golden Thread** Documents: Technical Datasheet, Material Safety Datasheet, Declaration of Performance (DoP), O&M Manual and more...

Product Information

Rev	Date	Comment	By	Chk	App
1.0	19/08/24	First Issue	FM	SH	JS



Depth	20mm / 30mm
Width	27mm
Gauge	0.5mm
Lengths	3.6m
Pack Quantities	10 / 200 / 400

REACTION TO FIRE:
A1

SERVICE CUT OUTS:
N/A

SYSTEM PERFORMANCE INFORMATION:
For performance information on our HadleyMF Ceiling systems please contact the Hadley Construction Technology Team.

STORAGE & HANDLING:

When installing Hadley components please ensure full PPE is used and the site is practicing a safe working environment alongside industry standards.

DISPOSAL:

Hadley Metal is fully recyclable.

SYSTEMS USED:

HadleyMF - Ceiling System

Item Code : 311B

HADLEY PRIMARY CHANNEL MF7

Hadley Primary Channel MF7 is used as the primary channel within our HadleyMF Ceiling allowing a fixing point for the MF5 Channels. Connected to Hadley Steel Hangers to form system grid.

Manufactured in accordance with EN 14195:2005

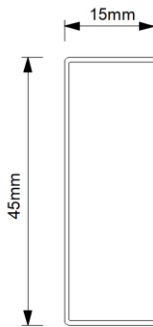


Scan QR code for Hadley System **Golden Thread Documents: Technical Datasheet, Material Safety Datasheet, Declaration of Performance (DoP), O&M Manual and more...**



Product Information

Rev	Date	Comment	By	Chk	App
1.0	19/08/24	First Issue	FM	SH	JS



Depth	15mm
Width	45mm
Gauge	0.7mm
Lengths	3.6m
Pack Quantities	10 / 200

REACTION TO FIRE:
A1

SERVICE CUT OUTS:
N/A

SYSTEM PERFORMANCE INFORMATION:
For performance information on our Hadley systems please contact the Hadley Construction Technology Team.

STORAGE & HANDLING:

When installing Hadley components please ensure full PPE is used and the site is practicing a safe working environment alongside industry standards.

DISPOSAL:

Hadley Metal is fully recyclable.

SYSTEMS USED:

HadleyMF - Ceiling System

Item Code : 2593B

HADLEY RESILIENT BAR

Hadley Resilient Bar when used alongside our HadleyHUSH System helps improve acoustic performance by isolating the outer plasterboard lining from the rest of the partition.



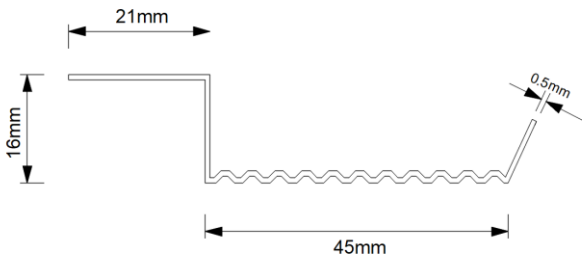
Manufactured in accordance with EN 14195:2005



Scan QR code for Hadley System **Golden Thread Documents: Technical Datasheet, Material Safety Datasheet, Declaration of Performance (DoP), O&M Manual and more...**

Product Information

Rev	Date	Comment	By	Chk	App
1.0	19/08/24	First Issue	FM	SH	JS



Stand-off	16mm
Gauge	0.5mm
Lengths	3m
Pack Quantities	20 / 100 / 500

REACTION TO FIRE:
A1

SERVICE CUT OUTS:
N/A

INSTALLATION:
Ensure that the screw fixings into the plasterboard are not penetrating both resilient bar and stud. This may have a detrimental effect on the acoustic performance of the partition.

SYSTEM PERFORMANCE INFORMATION:
To be installed as a part of a complete Hadley system to achieve both Fire and Acoustic performance. To understand more about our fully warranted and tested solutions, please contact our Hadley Construction Technology Team.

STORAGE & HANDLING:
When installing Hadley components please ensure full PPE is used and the site is practicing a safe working environment alongside industry standards.

DISPOSAL:
Hadley Metal is fully recyclable.

SYSTEMS USED:
HadleyHUSH- Single Stud with Resilient Bar System

Item Code : 5179

HADLEY FLAT STRAP

Hadley Flat Strap is used to strengthen Horizontal joints and to allow for a secure fixing point within a deflection head build up.

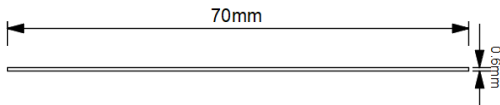
Manufactured in accordance with EN 14195:2005



Scan QR code for Hadley System **Golden Thread** Documents: Technical Datasheet, Material Safety Datasheet, Declaration of Performance (DoP), O&M Manual and more...

Product Information

Rev	Date	Comment	By	Chk	App
1.0	19/08/24	First Issue	FM	SH	JS



Size	70mm
Gauge	0.6mm
Lengths	2.4m
Pack Quantities	20 / 500

REACTION TO FIRE:
A1

SERVICE CUT OUTS:
N/A

SYSTEM PERFORMANCE INFORMATION:
To be installed as a part of a complete Hadley system to achieve both Fire and Acoustic performance. To understand more about our fully warranted and tested solutions, please contact our Hadley Construction Technology Team.

STORAGE & HANDLING:

When installing Hadley components please ensure full PPE is used and the site is practicing a safe working environment alongside industry standards.

DISPOSAL:

Hadley Metal is fully recyclable.

SYSTEMS USED:

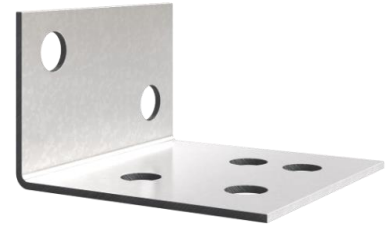
All Hadley Systems

Item Code : 6294

HADLEY SHAFTCORE ANGLE BRACKET

Hadley Shaftcore Angle Bracket is used to create a cavity to friction fix the Coreboard layer of Plasterboard without the use of screw fixing.

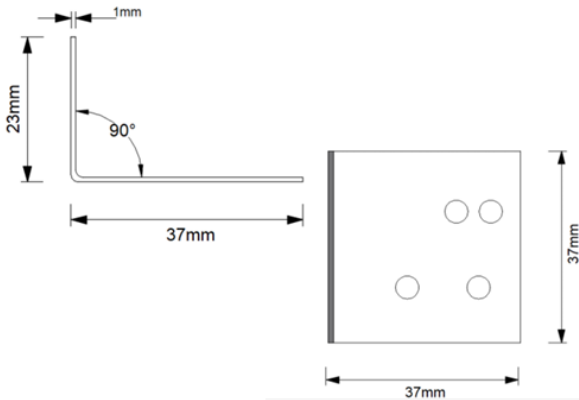
Manufactured in accordance with EN 14195:2005



Scan QR code for Hadley System **Golden Thread Documents: Technical Datasheet, Material Safety Datasheet, Declaration of Performance (DoP), O&M Manual and more...**

Product Information

Rev	Date	Comment	By	Chk	App
1.0	19/08/24	First Issue	FM	SH	JS



Size	1.0mm
Pack Quantities	100

REACTION TO FIRE:
A1

SERVICE CUT OUTS:
N/A

SYSTEM PERFORMANCE INFORMATION:
To be installed as a part of a complete Hadley system to achieve both Fire and Acoustic performance. To understand more about our fully warranted and tested solutions, please contact our Hadley Construction Technology Team.

STORAGE & HANDLING:

When installing Hadley components please ensure full PPE is used and the site is practicing a safe working environment alongside industry standards.

DISPOSAL:

Hadley Metal is fully recyclable.

SYSTEMS USED:

HadleySHAFT – Shaftwall Systems

Item Code : 5260

HADLEY SHORT LEG LINER BRACKET

Hadley Short Leg Liner Bracket is used to offset a uniform distance from an existing wall when building a HadleySHIELD System.

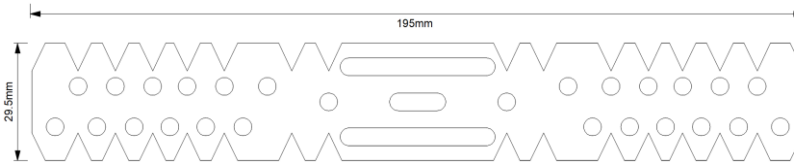
Manufactured in accordance with EN 14195:2005



Scan QR code for Hadley System **Golden Thread** Documents: Technical Datasheet, Material Safety Datasheet, Declaration of Performance (DoP), O&M Manual and more...

Product Information

Rev	Date	Comment	By	Chk	App
1.0	19/08/24	First Issue	FM	SH	JS



Gauge	0.9mm
Length	195mm
Pack Quantities	100

REACTION TO FIRE:
A1

SERVICE CUT OUTS:
N/A

SYSTEM PERFORMANCE INFORMATION:
To be installed as a part of a complete Hadley system to achieve both Fire and Acoustic performance. To understand more about our fully warranted and tested solutions, please contact our Hadley Construction Technology Team.

STORAGE & HANDLING:

When installing Hadley components please ensure full PPE is used and the site is practicing a safe working environment alongside industry standards.

DISPOSAL:

Hadley Metal is fully recyclable.

SYSTEMS USED:

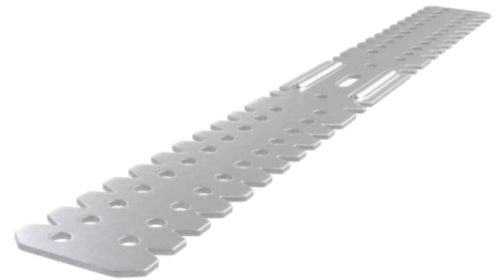
HadleySHIELD – Wall Lining System

Item Code : 5261

HADLEY LONG LEG LINER BRACKET

Hadley Long Leg Liner Bracket is used to offset a uniform distance from an existing wall when building a HadleySHIELD System.

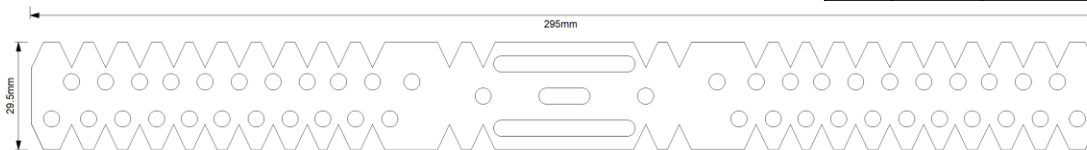
Manufactured in accordance with EN 14195:2005



Scan QR code for Hadley System **Golden Thread Documents: Technical Datasheet, Material Safety Datasheet, Declaration of Performance (DoP), O&M Manual and more...**

Product Information

Rev	Date	Comment	By	Chk	App
1.0	19/08/24	First Issue	FM	SH	JS



Gauge	0.9mm
Length	295mm
Pack Quantities	100

REACTION TO FIRE:
A1

SERVICE CUT OUTS:
N/A

SYSTEM PERFORMANCE INFORMATION:
To be installed as a part of a complete Hadley system to achieve both Fire and Acoustic performance. To understand more about our fully warranted and tested solutions, please contact our Hadley Construction Technology Team.

STORAGE & HANDLING:

When installing Hadley components please ensure full PPE is used and the site is practicing a safe working environment alongside industry standards.

DISPOSAL:

Hadley Metal is fully recyclable.

SYSTEMS USED:

HadleySHIELD – Wall Lining System

Item Code : 5069

HADLEY METAL FURRING CLIP

Hadley Metal Furring Clip is used to fix both the Hadley Primary Channel MF7 and the Hadley Ceiling Furring MF5 together when using the HadleyMF System.

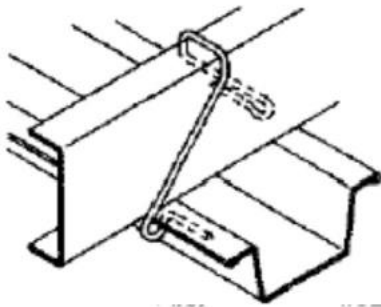
Manufactured in accordance with BS EN 13964:2014



Scan QR code for Hadley System **Golden Thread Documents: Technical Datasheet, Material Safety Datasheet, Declaration of Performance (DoP), O&M Manual and more...**

Product Information

Rev	Date	Comment	By	Chk	App
1.0	19/08/24	First Issue	FM	SH	JS



Size	2.64mm
Pack Quantities	100

REACTION TO FIRE:
N/A

SERVICE CUT OUTS:
N/A

SYSTEM PERFORMANCE INFORMATION:
To be installed as a part of a complete Hadley system to achieve both Fire and Acoustic performance. To understand more about our fully warranted and tested solutions, please contact our Hadley Construction Technology Team.

STORAGE & HANDLING:

When installing Hadley components please ensure full PPE is used and the site is practicing a safe working environment alongside industry standards.

DISPOSAL:

Hadley Metal is fully recyclable.

SYSTEMS USED:

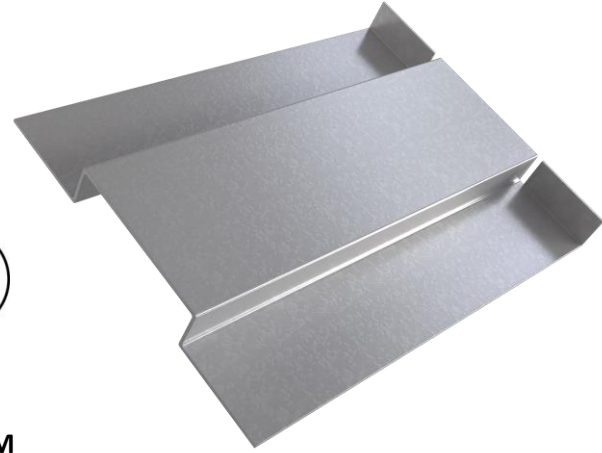
HadleyMF – Suspended Ceiling System

Item Code : 6672

HADLEY 12mm SERVICE SUPPORT PLATE

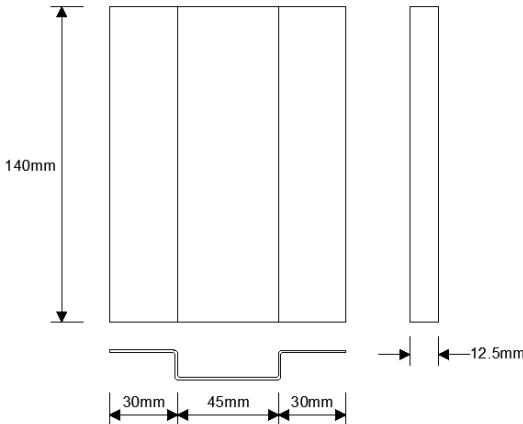
Hadley Service Support Plates are used to secure 12mm Plywood to allow services to be fixed to the face of a Partition.

Manufactured in accordance with EN 14195:2005



Scan QR code for Hadley System **Golden Thread** Documents: Technical Datasheet, Material Safety Datasheet, Declaration of Performance (DoP), O&M Manual and more...

Product Information



Rev	Date	Comment	By	Chk	App
1.0	19/08/24	First Issue	FM	SH	JS

Depth	12mm
Gauge	0.6mm
Pack Quantities	Box of 100

REACTION TO FIRE:
A1

SERVICE CUT OUTS:
N/A

SYSTEM PERFORMANCE INFORMATION:
To be installed as a part of a complete Hadley system to achieve both Fire and Acoustic performance. To understand more about our fully warranted and tested solutions, please contact our Hadley Construction Technology Team.

STORAGE & HANDLING:

When installing Hadley components please ensure full PPE is used and the site is practicing a safe working environment alongside industry standards.

DISPOSAL:

Hadley Metal is fully recyclable.

SYSTEMS USED:

All Hadley Systems

SYSTEM PERFORMANCE INFORMATION:

For installation guidance please refer to the Hadley HAD243 / HAD244 Service Support Plate Installation Details

Item Code : 6673

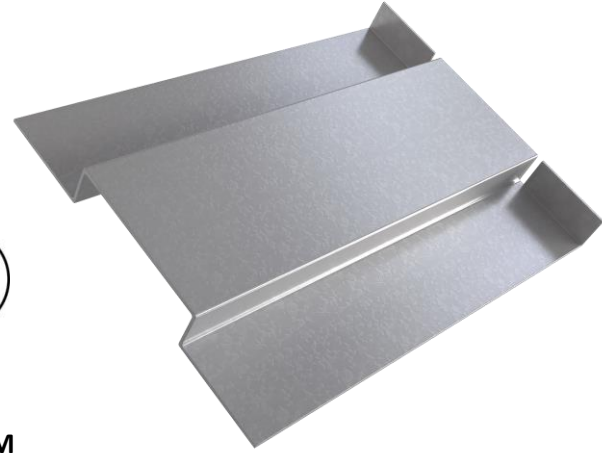
HADLEY 18mm SERVICE SUPPORT PLATE

Hadley Service Support Plates are used to secure 18mm Plywood to allow services to be fixed to the face of a Partition.

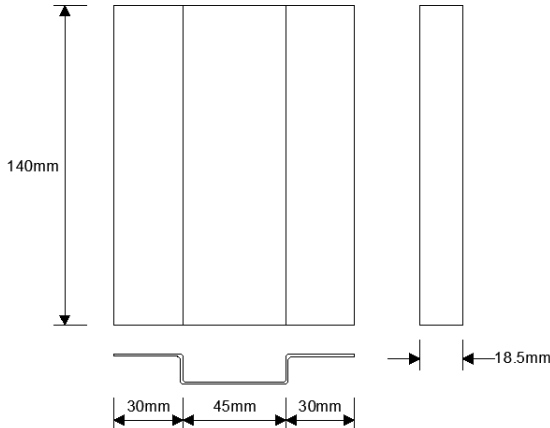
Manufactured in accordance with EN 14195:2005



Scan QR code for Hadley System **Golden Thread** Documents: Technical Datasheet, Material Safety Datasheet, Declaration of Performance (DoP), O&M Manual and more...



Product Information



Rev	Date	Comment	By	Chk	App
1.0	19/08/24	First Issue	FM	SH	JS

Depth	18mm
Gauge	0.6mm
Pack Quantities	Box of 100

REACTION TO FIRE:
A1

SERVICE CUT OUTS:
N/A

SYSTEM PERFORMANCE INFORMATION:
To be installed as a part of a complete Hadley system to achieve both Fire and Acoustic performance. To understand more about our fully warranted and tested solutions, please contact our Hadley Construction Technology Team.

STORAGE & HANDLING:

When installing Hadley components please ensure full PPE is used and the site is practicing a safe working environment alongside industry standards.

DISPOSAL:

Hadley Metal is fully recyclable.

SYSTEMS USED:

All Hadley Systems

SYSTEM PERFORMANCE INFORMATION:

For installation guidance please refer to the Hadley HAD243 / HAD244 Service Support Plate Installation Details

Item Code : 6763

HADLEY STAGGERED STUD CLIP (SC1)

Hadley Staggered Stud Clip is used within a HadleySTAGGER system to offset and secure the Hadley I Stud when placed within the Hadley Track.

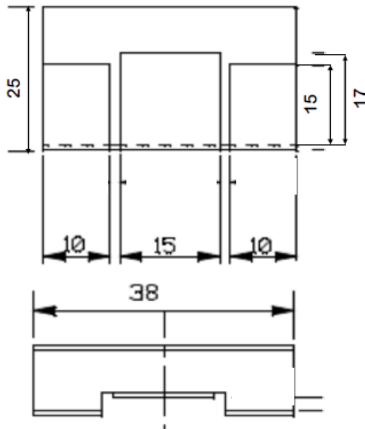
Manufactured in accordance with EN 14195:2005



Scan QR code for Hadley System **Golden Thread Documents: Technical Datasheet, Material Safety Datasheet, Declaration of Performance (DoP), O&M Manual and more...**



Product Information



Rev	Date	Comment	By	Chk	App
1.0	19/08/24	First Issue	FM	SH	JS

Size	38mm
Gauge	0.9mm
Pack Quantities	100

REACTION TO FIRE:
A1

SERVICE CUT OUTS:
N/A

SYSTEM PERFORMANCE INFORMATION:
To be installed as a part of a complete Hadley system to achieve both Fire and Acoustic performance. To understand more about our fully warranted and tested solutions, please contact our Hadley Construction Technology Team.

STORAGE & HANDLING:

When installing Hadley components please ensure full PPE is used and the site is practicing a safe working environment alongside industry standards.

DISPOSAL:

Hadley Metal is fully recyclable.

SYSTEMS USED:

HadleySTAGGER – Staggered I Stud System

Item Code : 5288

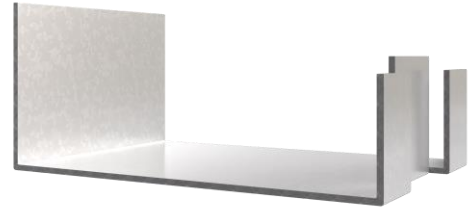
HADLEY STAGGERED STUD CLIP (SC2)

Hadley Staggered Stud Clip is used within a HadleySTAGGER system to offset and secure the Hadley I Stud when placed within the Hadley Track.

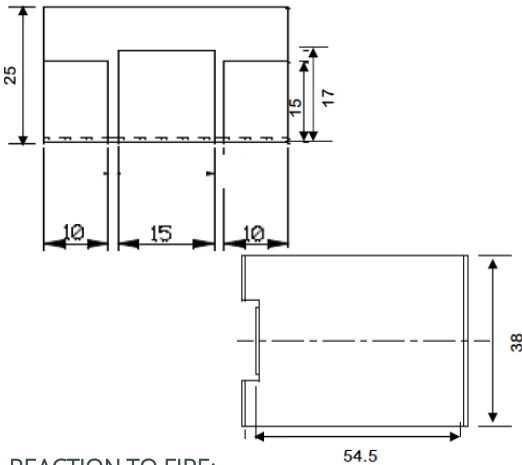
Manufactured in accordance with EN 14195:2005



Scan QR code for Hadley System **Golden Thread Documents: Technical Datasheet, Material Safety Datasheet, Declaration of Performance (DoP), O&M Manual and more...**



Product Information



REACTION TO FIRE:
A1

SERVICE CUT OUTS:
N/A

SYSTEM PERFORMANCE INFORMATION:
To be installed as a part of a complete Hadley system to achieve both Fire and Acoustic performance. To understand more about our fully warranted and tested solutions, please contact our Hadley Construction Technology Team.

Rev	Date	Comment	By	Chk	App
1.0	19/08/24	First Issue	FM	SH	JS

Size	54mm
Gauge	0.9mm
Pack Quantities	100

STORAGE & HANDLING:

When installing Hadley components please ensure full PPE is used and the site is practicing a safe working environment alongside industry standards.

DISPOSAL:

Hadley Metal is fully recyclable.

SYSTEMS USED:

HadleySTAGGER – Staggered I Stud System

Revision	Date	Comment	By	Chkd	App
1.0	19/08/24	First Issue	FM	SH	JS



Hadley Group HQ, Downing Street, Smethwick,
West Midlands,
B66 2PA

+44 (0) 121 555 1300

+44 121 820 6500

hct@hadleygroup.com