

Hadley DRYLINING

Standard Details

Hadley LINE – Double Layer - Drawings



Board Thickness	Fixing Length
≤15mm	25mm
12.5mm + 12.5mm	25mm + 38mm
12.5mm + 15mm	25mm + 38mm
15mm + 15mm	25mm + 42mm

Base fixings suitable for substrate, at 600mm centres and within 50mm of each end.

Hadley Track to suit specification.

Insulation to suit specification.

Two layers of Plasterboard to suit specification.

Hadley 'I' Stud to suit specification.

Inner layer board fixings using Hadley Drywall Screws at 300mm centres.

Outer layer board fixings using Hadley Drywall Screws at 300mm centres.

Acoustic and Intumescent Sealant to suit specification.

00	JUL21	First Issue	FM	JS	JS	System details to be read in conjunction with Hadley Group project specification pack. All applications to be built in accordance with British Standards, Building Regulations and Hadley Group tested solutions.
Rev:	Date:	Reason for Issue:	Drn:	Chk:	App:	

Project:

Typical System Detail
See project specification for exact requirements

Title:

HadleyLINE
IWL Double Layer
Base

Scale:

1:2 @ A4

Date:

Jul 21

Drawn:

FM

Checked:

JS

Dwg No:

DRY-HAD-XX-ZZ-DT-X-1402

Revision:

00



Hadley Group, Downing Street,
Smethwick, West Midlands B66 2PA

Tel: +44 (0) 121 555 1329

E-mail: hct@hadleygroup.co.uk

All performance data and system specifications are for systems constructed with materials & components as shown. The inclusion or substitution of any other manufacturers materials or components could invalidate test data and system performance. The information is provided in good faith and is based upon details received which are assumed to include all relevant facts. No duty of care is owed to the recipient or any other third party and Hadley Industries PLC cannot accept liability in respect of the details shown. None of the content may be distributed or copied directly without prior approval.

© 2021 Hadley Industries Holdings Limited

Board Thickness	Fixing Length
≤15mm	25mm
12.5mm + 12.5mm	25mm + 38mm
12.5mm + 15mm	25mm + 38mm
15mm + 15mm	25mm + 42mm

Soffit fixings suitable for substrate, at 600mm centres and within 50mm of each end.

Acoustic and Intumescent Sealant to suit specification.

Hadley Track to suit specification.

Inner layer board fixings using Hadley Drywall Screws at 300mm centres.

Outer layer board fixings using Hadley Drywall Screws at 300mm centres.

Hadley 'I' Stud to suit specification.

Two layers of Plasterboard to suit specification.

Insulation to suit specification, hung from top of lining using Hadley 25x25mm Steel Angle, secured through to soffit using suitable fixings within 50mm of each end.

00	JUL21	First Issue	FM	JS	JS	System details to be read in conjunction with Hadley Group project specification pack. All applications to be built in accordance with British Standards, Building Regulations and Hadley Group tested solutions.
Rev:	Date:	Reason for Issue:	Drn:	Chk:	App:	

Project:

Typical System Detail
See project specification for exact requirements

Title:

HadleyLINE
IWL Double Layer
Fixed Head

Scale:	Date:	Drawn:	Checked:	Dwg No:	Revision:
1:2 @ A4	Jul 21	FM	JS	DRY-HAD-XX-ZZ-DT-X-1403	00



Hadley Group, Downing Street,
Smethwick, West Midlands B66 2PA

Tel: +44 (0) 121 555 1329

E-mail: hct@hadleygroup.co.uk

All performance data and system specifications are for systems constructed with materials & components as shown. The inclusion or substitution of any other manufacturers materials or components could invalidate test data and system performance. The information is provided in good faith and is based upon details received which are assumed to include all relevant facts. No duty of care is owed to the recipient or any other third party and Hadley Industries PLC cannot accept liability in respect of the details shown. None of the content may be distributed or copied directly without prior approval.

Min. Deflection to suit structural engineer design	Min. Head Track Fillet(s)	Hadley Track Flange
5mm	1x15mm Plasterboard	25mm
9mm	1x19mm CoreBoard	25mm
15mm	2x12.5mm Plasterboard	50mm
20mm	2x15mm Plasterboard	50mm
28mm	2x19mm CoreBoard	50mm
35mm	3x15mm Plasterboard	70mm

Board Thickness	Fixing Length
≤15mm	25mm
12.5mm + 12.5mm	25mm + 38mm
12.5mm + 15mm	25mm + 38mm
15mm + 15mm	25mm + 42mm

Soffit fixings suitable for substrate, at 600mm centres and within 50mm of each end.

Head Track Fillets, refer to deflection table.

Acoustic and Intumescent Sealant to suit specification.

Hadley Track to suit specification and deflection allowance.

Hadley 'I' Stud to suit specification.

Deflection allowance between board and soffit.

Face boards to overlap Head Track Fillets by minimum 10mm.

Deflection allowance between stud and track.

Deflection allowance between flat plate and track.

Hadley Flat Plate secured to stud using 2N^o Hadley Jack-point Wafer Head Screws.

Plasterboard to suit specification.

Insulation to suit specification, hung from top of lining using Hadley 25x25mm Steel Angle, secured to head track using Hadley Drywall Screws within 50mm of each end.

Inner layer board fixings using Hadley Jack-point Screws at 300mm centres.

Outer layer board fixings using Hadley Jack-point Screws at 300mm centres.

00	JUL21	First Issue	FM	JS	JS	System details to be read in conjunction with Hadley Group project specification pack. All applications to be built in accordance with British Standards, Building Regulations and Hadley Group tested solutions.
Rev:	Date:	Reason for Issue:	Drn:	Chk:	App:	



Hadley Group, Downing Street,
Smethwick, West Midlands B66 2PA

Tel: +44 (0) 121 555 1329

E-mail: hct@hadleygroup.co.uk

Project:

Typical System Detail
See project specification for exact requirements

Title:

HadleyLINE
IWL Double Layer
Deflection Head

Scale:	Date:	Drawn:	Checked:	Dwg No:	Revision:
1:2 @ A4	Jul 21	FM	JS	DRY-HAD-XX-ZZ-DT-X-1404	00

All performance data and system specifications are for systems constructed with materials & components as shown. The inclusion or substitution of any other manufacturers materials or components could invalidate test data and system performance. The information is provided in good faith and is based upon details received which are assumed to include all relevant facts. No duty of care is owed to the recipient or any other third party and Hadley Industries PLC cannot accept liability in respect of the details shown. None of the content may be distributed or copied directly without prior approval.

Board Thickness	Fixing Length
≤15mm	25mm
12.5mm + 12.5mm	25mm + 38mm
12.5mm + 15mm	25mm + 38mm
15mm + 15mm	25mm + 42mm

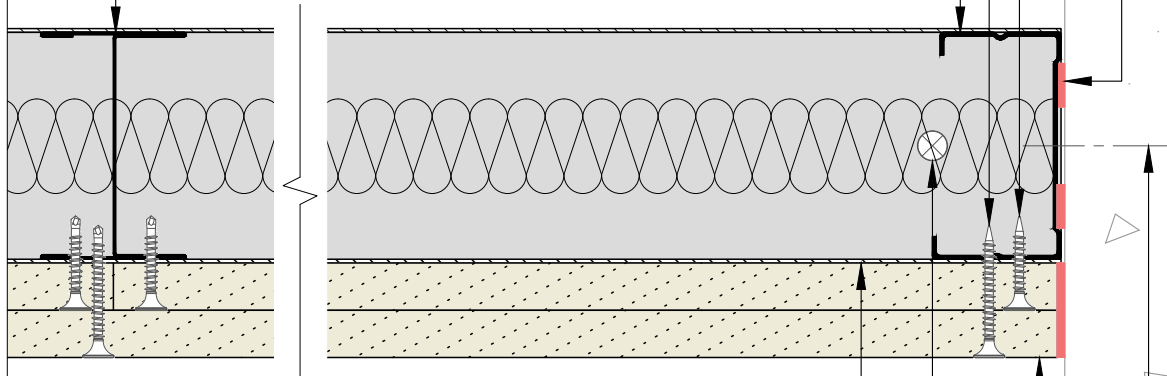
Hadley 'I' Stud to suit specification.

Acoustic and Intumescent Sealant to suit specification.

Inner layer board fixings using Hadley Drywall Screws at 300mm centres.

Outer layer board fixings using Hadley Drywall Screws at 300mm centres.

Hadley 'C' Stud at abutment, to suit specification.



Hadley Track to suit specification.

Base/Soffit fixings suitable for substrate, at 600mm centres and within 50mm of each end.

Two layers of Plasterboard to suit specification.

Abutment fixings suitable for substrate at 600mm centres and within 50mm of each end.

00	JUL21	First Issue	FM	JS	JS	System details to be read in conjunction with Hadley Group project specification pack. All applications to be built in accordance with British Standards, Building Regulations and Hadley Group tested solutions.
Rev:	Date:	Reason for Issue:	Drn:	Chk:	App:	

Project:

Typical System Detail
See project specification for exact requirements

Title:

HadleyLINE
IWL Double Layer
Abutment to Concrete/Blockwork

Scale:	Date:	Drawn:	Checked:	Dwg No:	Revision:
1:2 @ A4	Jul 21	FM	JS	DRY-HAD-XX-ZZ-DT-X-1405	00



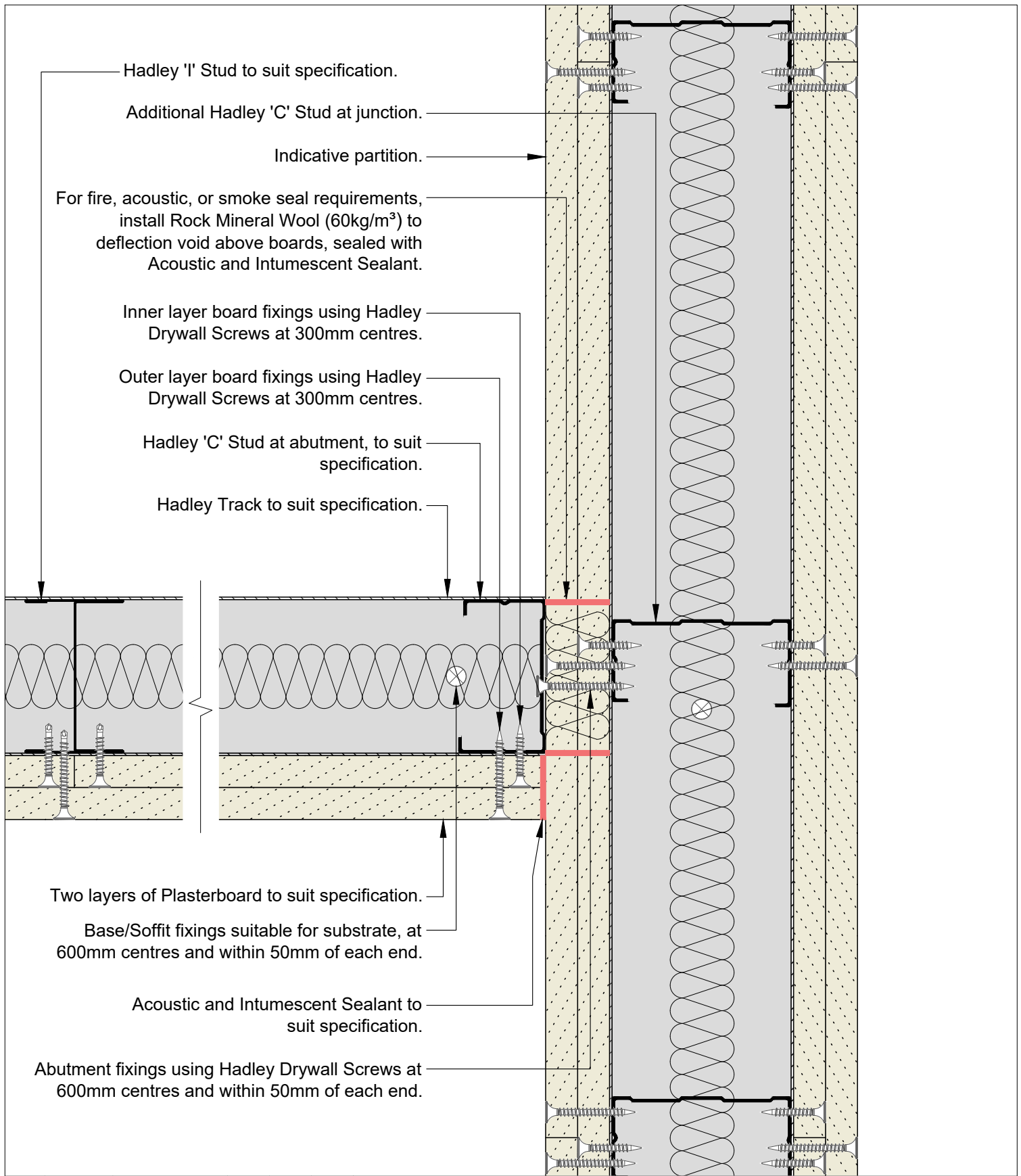
Hadley Group, Downing Street,
Smethwick, West Midlands B66 2PA

Tel: +44 (0) 121 555 1329

E-mail: hct@hadleygroup.co.uk

All performance data and system specifications are for systems constructed with materials & components as shown. The inclusion or substitution of any other manufacturers materials or components could invalidate test data and system performance. The information is provided in good faith and is based upon details received which are assumed to include all relevant facts. No duty of care is owed to the recipient or any other third party and Hadley Industries PLC cannot accept liability in respect of the details shown. None of the content may be distributed or copied directly without prior approval.

© 2021 Hadley Industries Holdings Limited



00	JUL21	First Issue	FM	JS	JS	System details to be read in conjunction with Hadley Group project specification pack. All applications to be built in accordance with British Standards, Building Regulations and Hadley Group tested solutions.
Rev:	Date:	Reason for Issue:	Drn:	Chk:	App:	



Hadley Group, Downing Street,
Smethwick, West Midlands B66 2PA
Tel: +44 (0) 121 555 1329
E-mail: hct@hadleygroup.co.uk

Project:

Typical System Detail
See project specification for exact requirements

Title:

HadleyLINE
IWL Double Layer
Abutment to Drylining Partition

Scale:

1:2 @ A4

Date:

Jul 21

Drawn:

FM

Checked:

JS

Dwg No:

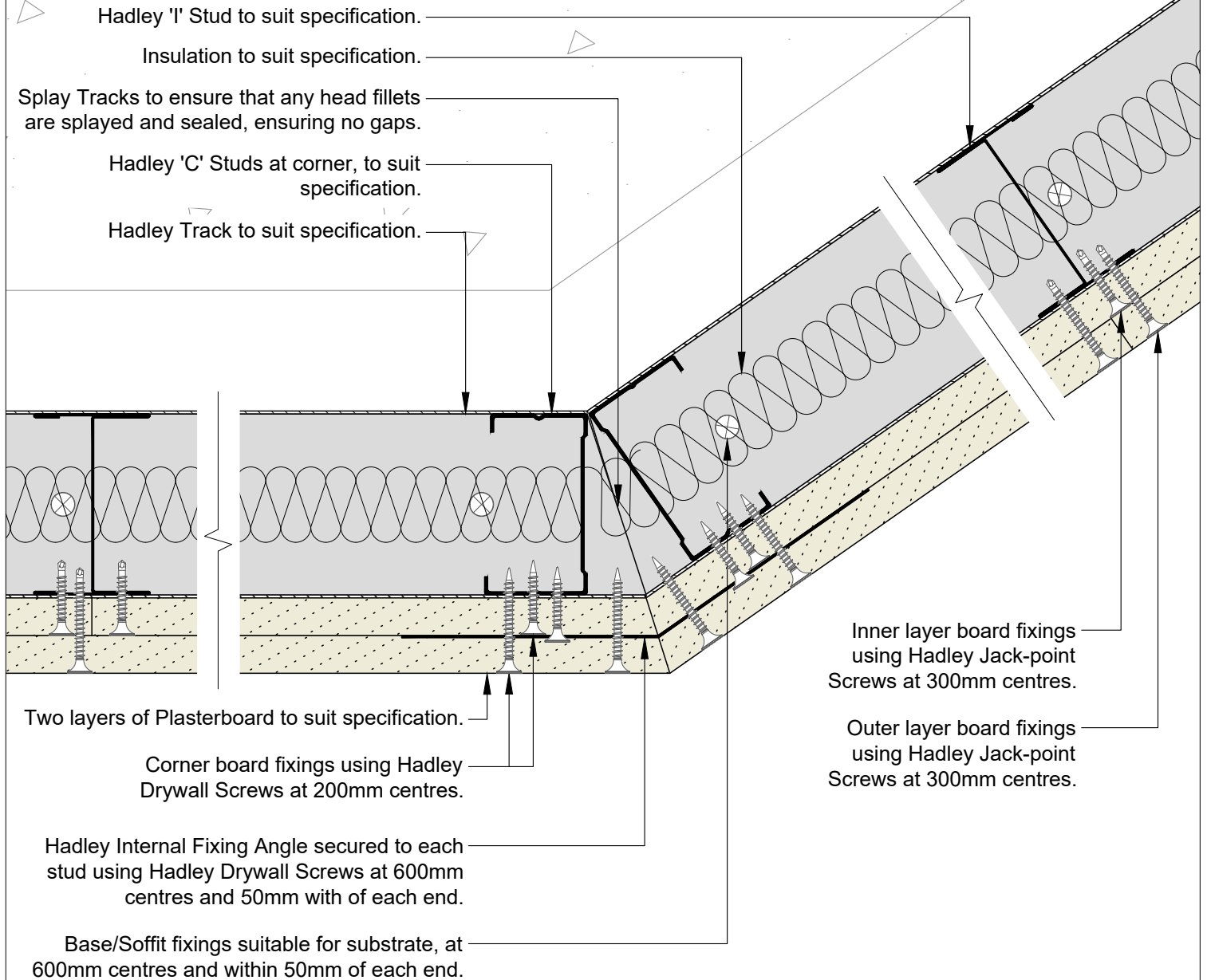
DRY-HAD-XX-ZZ-DT-X-1406

Revision:

00

All performance data and system specifications are for systems constructed with materials & components as shown. The inclusion or substitution of any other manufacturers materials or components could invalidate test data and system performance. The information is provided in good faith and is based upon details received which are assumed to include all relevant facts. No duty of care is owed to the recipient or any other third party and Hadley Industries PLC cannot accept liability in respect of the details shown. None of the content may be distributed or copied directly without prior approval.

Board Thickness	Fixing Length
≤15mm	25mm
12.5mm + 12.5mm	25mm + 38mm
12.5mm + 15mm	25mm + 38mm
15mm + 15mm	25mm + 42mm



00	JUL21	First Issue	FM	JS	JS	System details to be read in conjunction with Hadley Group project specification pack. All applications to be built in accordance with British Standards, Building Regulations and Hadley Group tested solutions.
Rev:	Date:	Reason for Issue:	Drn:	Chk:	App:	



Hadley Group, Downing Street,
Smethwick, West Midlands B66 2PA
Tel: +44 (0) 121 555 1329
E-mail: hct@hadleygroup.co.uk

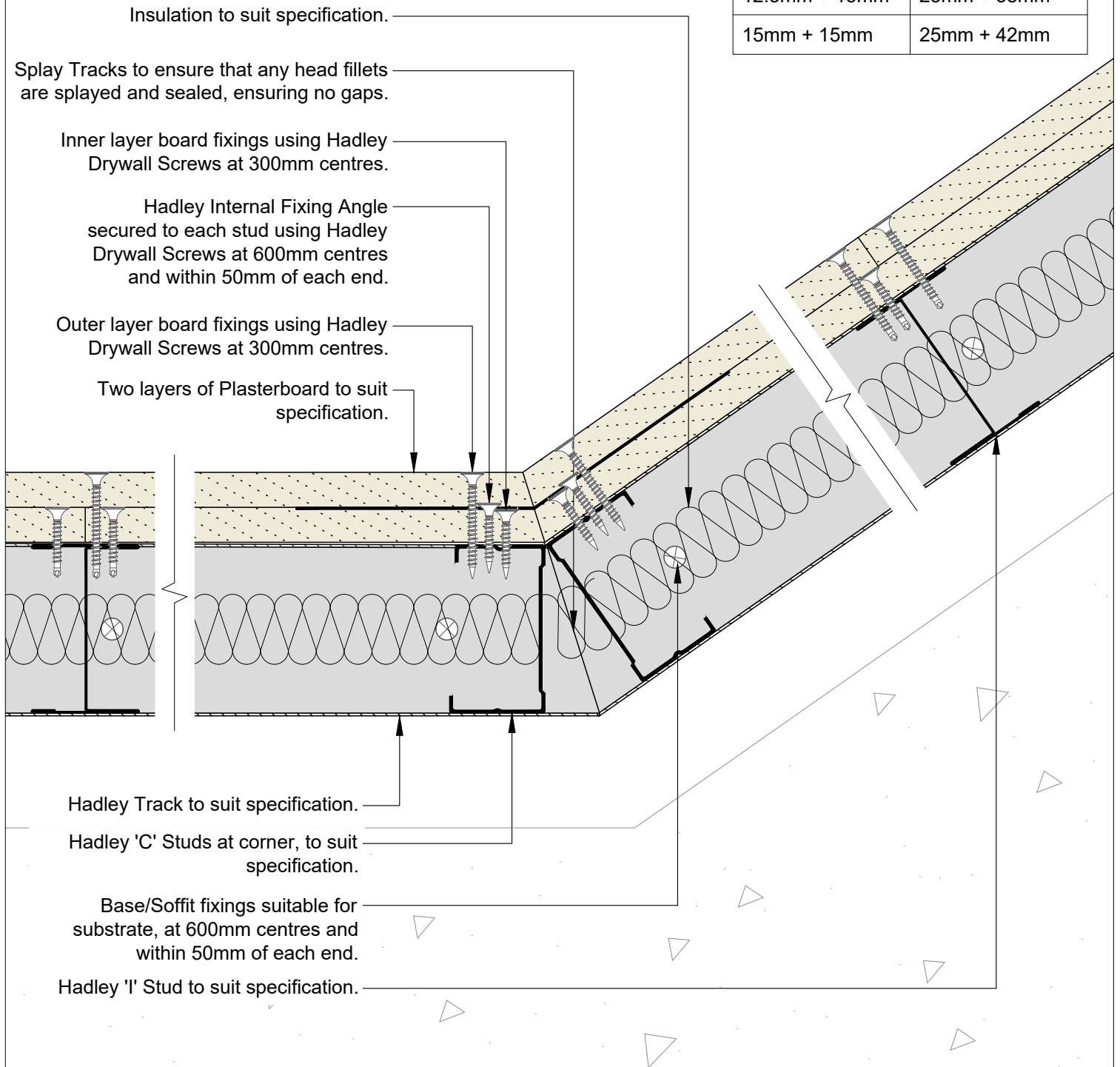
Project:
Typical System Detail
See project specification for exact requirements

Title:
HadleyLINE
IWL Double Layer
Splayed Corner Internal

Scale:	Date:	Drawn:	Checked:	Dwg No:	Revision:
1:2 @ A4	Jul 21	FM	JS	DRY-HAD-XX-ZZ-DT-X-1407	00

All performance data and system specifications are for systems constructed with materials & components as shown. The inclusion or substitution of any other manufacturers materials or components could invalidate test data and system performance. The information is provided in good faith and is based upon details received which are assumed to include all relevant facts. No duty of care is owed to the recipient or any other third party and Hadley Industries PLC cannot accept liability in respect of the details shown. None of the content may be distributed or copied directly without prior approval.

Board Thickness	Fixing Length
≤15mm	25mm
12.5mm + 12.5mm	25mm + 38mm
12.5mm + 15mm	25mm + 38mm
15mm + 15mm	25mm + 42mm



00	JUL21	First Issue	FM	JS	JS	System details to be read in conjunction with Hadley Group project specification pack. All applications to be built in accordance with British Standards, Building Regulations and Hadley Group tested solutions.
Rev:	Date:	Reason for Issue:	Drn:	Chk:	App:	



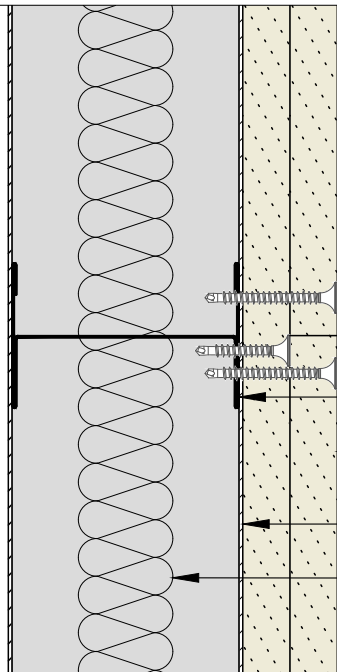
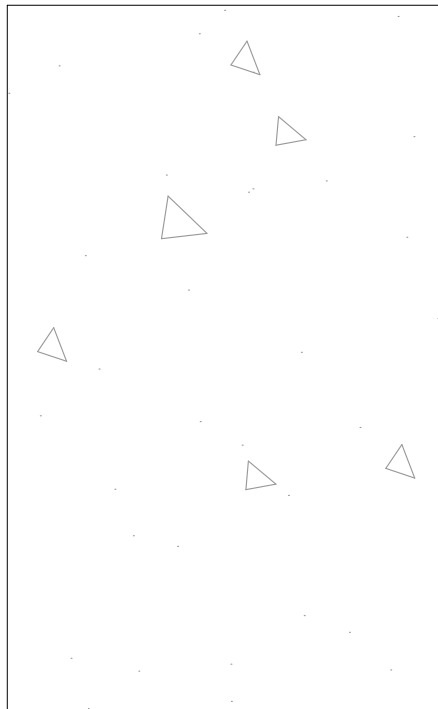
Hadley Group, Downing Street,
Smethwick, West Midlands B66 2PA
Tel: +44 (0) 121 555 1329
E-mail: hct@hadleygroup.co.uk

Project:
Typical System Detail
See project specification for exact requirements

Title:
HadleyLINE
IWL Double Layer
Splayed Corner External

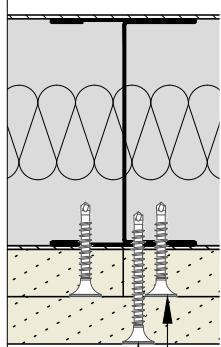
Scale:	Date:	Drawn:	Checked:	Dwg No:	Revision:
1:2 @ A4	Jul 21	FM	JS	DRY-HAD-XX-ZZ-DT-X-1408	00

All performance data and system specifications are for systems constructed with materials & components as shown. The inclusion or substitution of any other manufacturers materials or components could invalidate test data and system performance. The information is provided in good faith and is based upon details received which are assumed to include all relevant facts. No duty of care is owed to the recipient or any other third party and Hadley Industries PLC cannot accept liability in respect of the details shown. None of the content may be distributed or copied directly without prior approval.



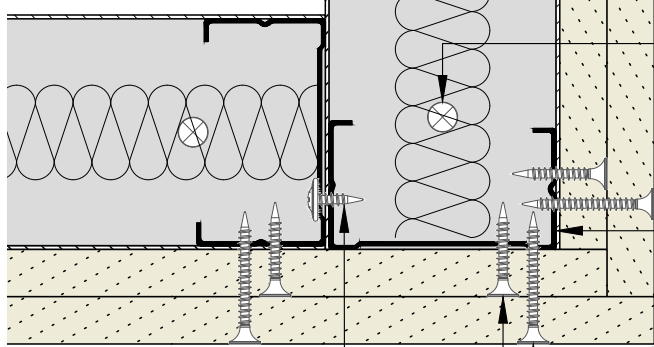
Board Thickness	Fixing Length
≤15mm	25mm
12.5mm + 12.5mm	25mm + 38mm
12.5mm + 15mm	25mm + 38mm
15mm + 15mm	25mm + 42mm

- Hadley 'I' Stud to suit specification.
- Two layers of Plasterboard to suit specification.
- Hadley Track to suit specification.
- Insulation to suit specification.



Outer layer board fixings using Hadley Jack-point Screws at 300mm centres.

Inner layer board fixings using Hadley Jack-point Screws at 300mm centres.



Base/Soffit fixings suitable for substrate, at 600mm centres and within 50mm of each end.

Hadley 'C' Studs at corner, to suit specification.

Hadley Corner Bead.

Corner board fixings using Hadley Drywall Screws at 200mm centres.

Abutment fixings using Hadley Wafer Head Screws at 600mm centres and within 50mm of each end.

00	JUL21	First Issue	FM	JS	JS	System details to be read in conjunction with Hadley Group project specification pack. All applications to be built in accordance with British Standards, Building Regulations and Hadley Group tested solutions.
Rev:	Date:	Reason for Issue:	Drn:	Chk:	App:	

Project:

Typical System Detail
See project specification for exact requirements

Title:

HadleyLINE
IWL Double Layer
90° Corner External



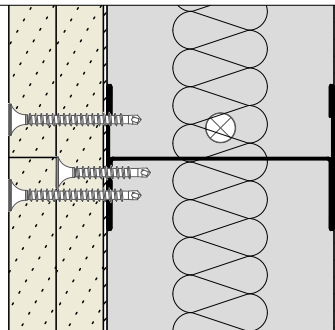
Hadley Group, Downing Street,
Smethwick, West Midlands B66 2PA

Tel: +44 (0) 121 555 1329

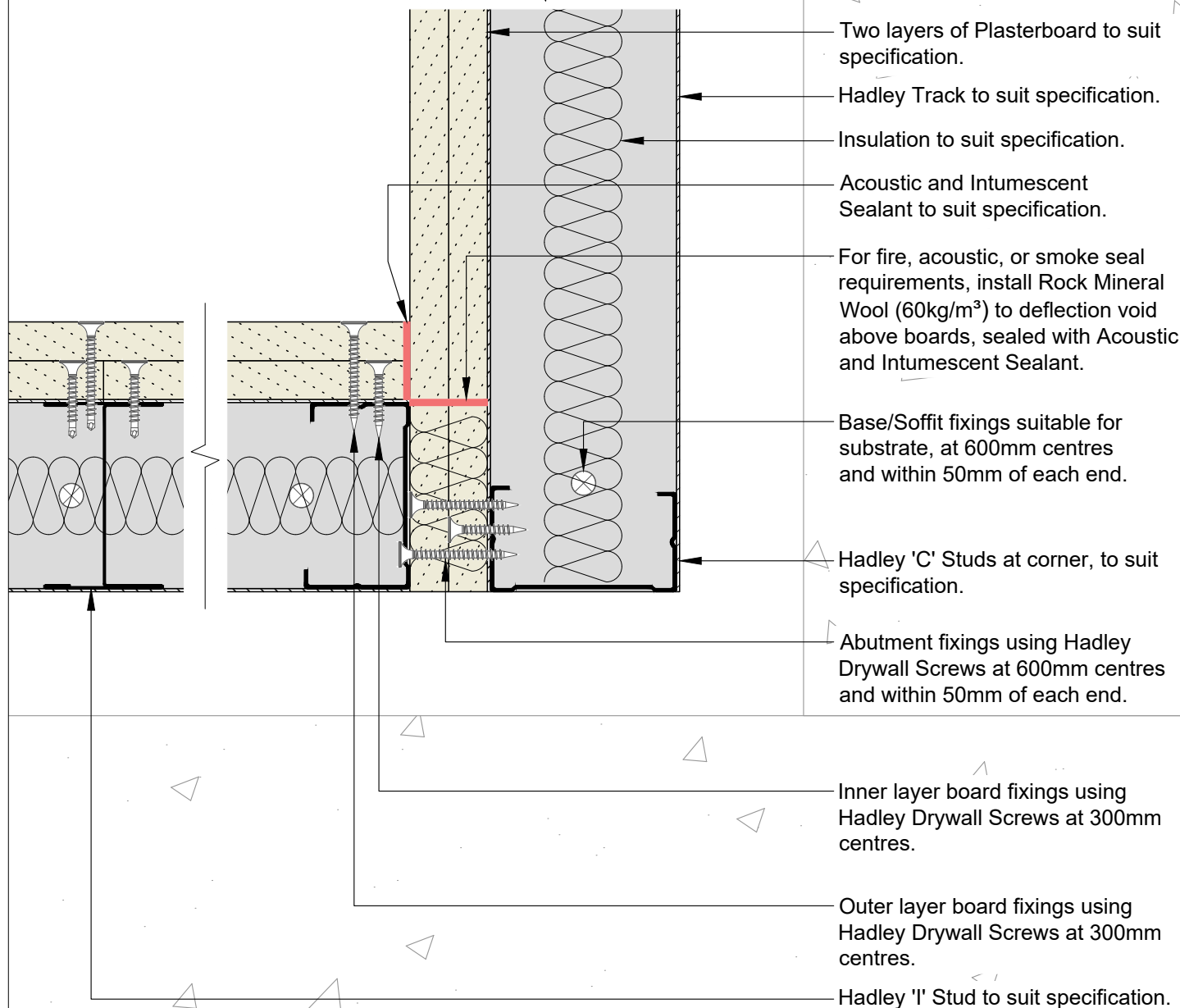
E-mail: hct@hadleygroup.co.uk

Scale:	Date:	Drawn:	Checked:	Dwg No:	Revision:
1:2 @ A4	Jul 21	FM	JS	DRY-HAD-XX-ZZ-DT-X-1409	00

All performance data and system specifications are for systems constructed with materials & components as shown. The inclusion or substitution of any other manufacturers materials or components could invalidate test data and system performance. The information is provided in good faith and is based upon details received which are assumed to include all relevant facts. No duty of care is owed to the recipient or any other third party and Hadley Industries PLC cannot accept liability in respect of the details shown. None of the content may be distributed or copied directly without prior approval.



Board Thickness	Fixing Length
≤15mm	25mm
12.5mm + 12.5mm	25mm + 38mm
12.5mm + 15mm	25mm + 38mm
15mm + 15mm	25mm + 42mm



00	JUL21	First Issue	FM	JS	JS	System details to be read in conjunction with Hadley Group project specification pack. All applications to be built in accordance with British Standards, Building Regulations and Hadley Group tested solutions.
Rev:	Date:	Reason for Issue:	Drn:	Chk:	App:	



Hadley Group, Downing Street,
Smethwick, West Midlands B66 2PA

Tel: +44 (0) 121 555 1329

E-mail: hct@hadleygroup.co.uk

Project:

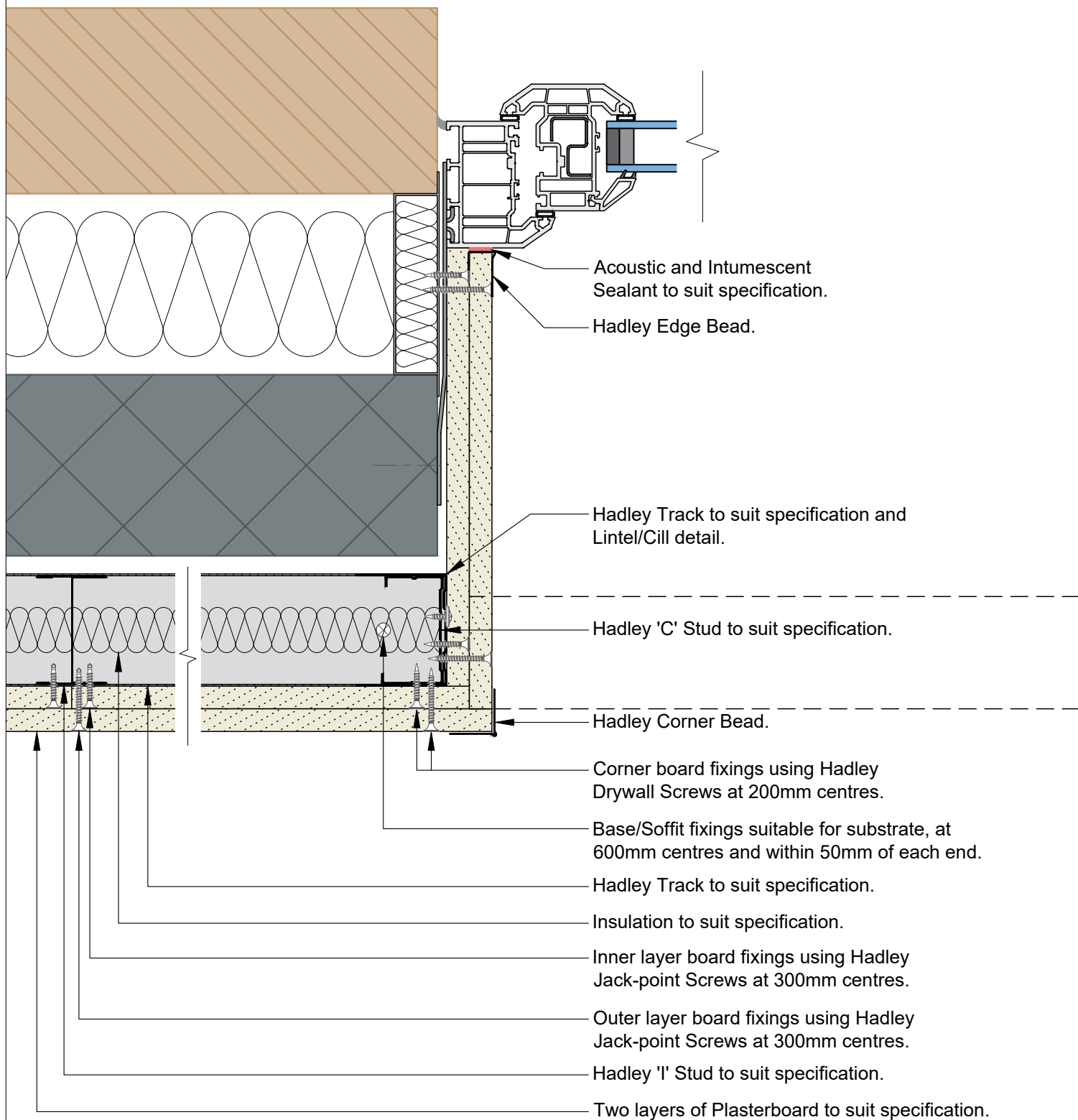
Typical System Detail
See project specification for exact requirements

Title:

HadleyLINE
IWL Double Layer
90° Corner Internal

Scale:	Date:	Drawn:	Checked:	Dwg No:	Revision:
1:2 @ A4	Jul 21	FM	JS	DRY-HAD-XX-ZZ-DT-X-1410	00

All performance data and system specifications are for systems constructed with materials & components as shown. The inclusion or substitution of any other manufacturers materials or components could invalidate test data and system performance. The information is provided in good faith and is based upon details received which are assumed to include all relevant facts. No duty of care is owed to the recipient or any other third party and Hadley Industries PLC cannot accept liability in respect of the details shown. None of the content may be distributed or copied directly without prior approval.



00	JUL21	First Issue	FM	JS	JS	System details to be read in conjunction with Hadley Group project specification pack. All applications to be built in accordance with British Standards, Building Regulations and Hadley Group tested solutions.
Rev:	Date:	Reason for Issue:	Drn:	Chk:	App:	



Hadley Group, Downing Street,
Smethwick, West Midlands B66 2PA

Tel: +44 (0) 121 555 1329

E-mail: hct@hadleygroup.co.uk

Project:

Typical System Detail
See project specification for exact requirements

Title:

HadleyLINE
IWL Double Layer
Window/Door Reveal Detail

Scale:

1:3 @ A4

Date:

Jul 21

Drawn:

FM

Checked:

JS

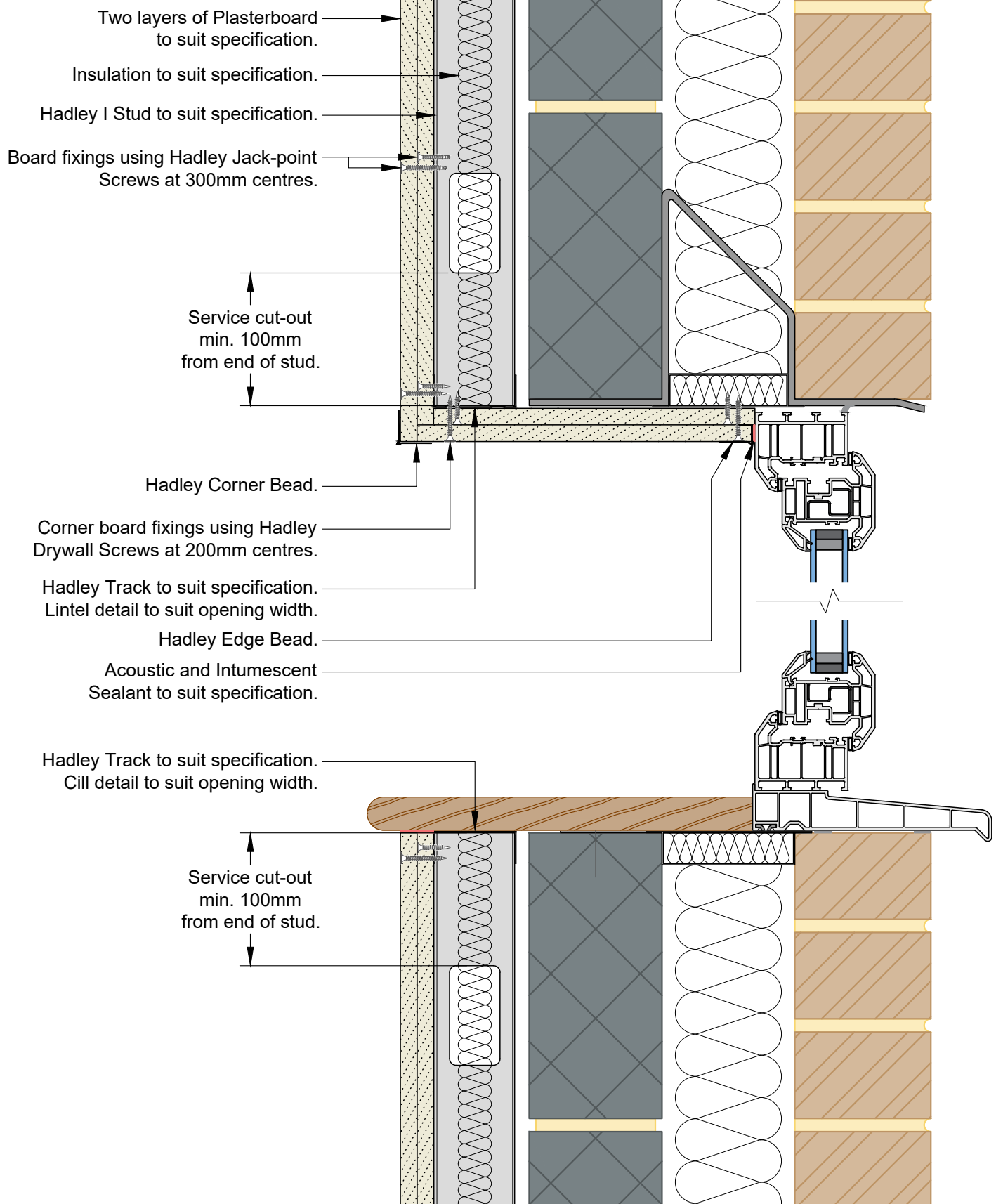
Dwg No:

DRY-HAD-XX-ZZ-DT-X-1411

Revision:

00

All performance data and system specifications are for systems constructed with materials & components as shown. The inclusion or substitution of any other manufacturers materials or components could invalidate test data and system performance. The information is provided in good faith and is based upon details received which are assumed to include all relevant facts. No duty of care is owed to the recipient or any other third party and Hadley Industries PLC cannot accept liability in respect of the details shown. None of the content may be distributed or copied directly without prior approval.



00	JUL21	First Issue	FM	JS	JS	System details to be read in conjunction with Hadley Group project specification pack. All applications to be built in accordance with British Standards, Building Regulations and Hadley Group tested solutions.
Rev:	Date:	Reason for Issue:	Drn:	Chk:	App:	



Hadley Group, Downing Street,
Smethwick, West Midlands B66 2PA
Tel: +44 (0) 121 555 1329
E-mail: hct@hadleygroup.co.uk

Project:

Typical System Detail
See project specification for exact requirements

Title:

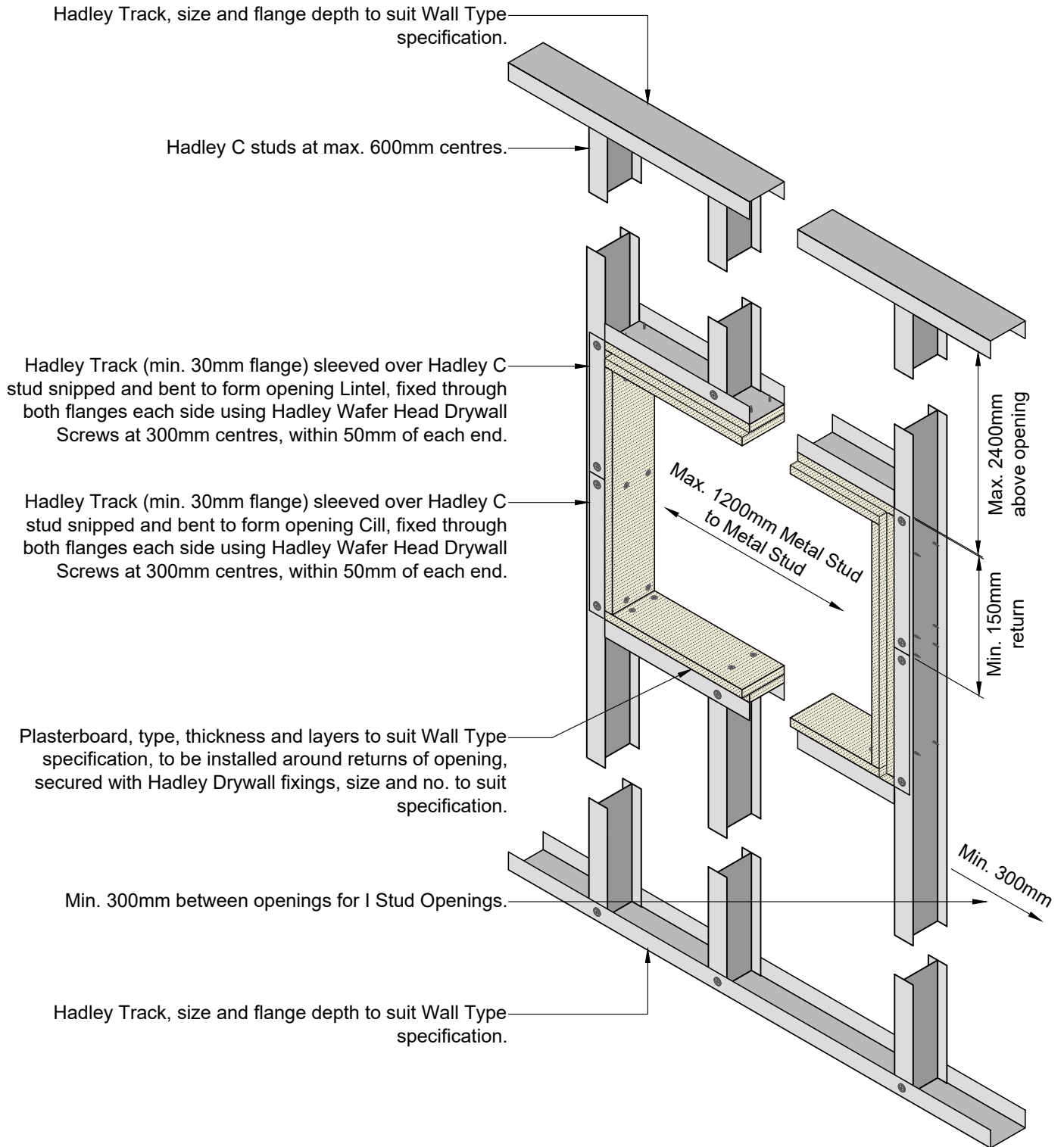
HadleyLINE
IWL Double Layer
Window/Door Cill/Head Detail

Scale:	Date:	Drawn:	Checked:	Dwg No:	Revision:
1:4 @ A4	Jul 21	FM	JS	DRY-HAD-XX-ZZ-DT-X-1412	00

All performance data and system specifications are for systems constructed with materials & components as shown. The inclusion or substitution of any other manufacturers materials or components could invalidate test data and system performance. The information is provided in good faith and is based upon details received which are assumed to include all relevant facts. No duty of care is owed to the recipient or any other third party and Hadley Industries PLC cannot accept liability in respect of the details shown. None of the content may be distributed or copied directly without prior approval.

Stud and track depths and gauge to suit specification.
Fixing type to suit metalwork gauge.

Ensure that all penetrations are suitably fire stopped and tested by firestopping manufacturer for use in drylining systems. Ensure that all penetrations are confirmed with the minimum distances stated within BSEN1634-1:2014.



00	DEC21	First Issue	SD	JS	JS	System details to be read in conjunction with Hadley Group project specification pack. All applications to be built in accordance with British Standards, Building Regulations and Hadley Group tested solutions.
Rev:	Date:	Reason for Issue:	Drn:	Chk:	App:	



Hadley Group, Downing Street,
Smethwick, West Midlands B66 2PA

Tel: +44 (0) 121 555 1329

E-mail: hct@hadleygroup.co.uk

Project:

Typical System Detail
See project specification for exact requirements

Title:

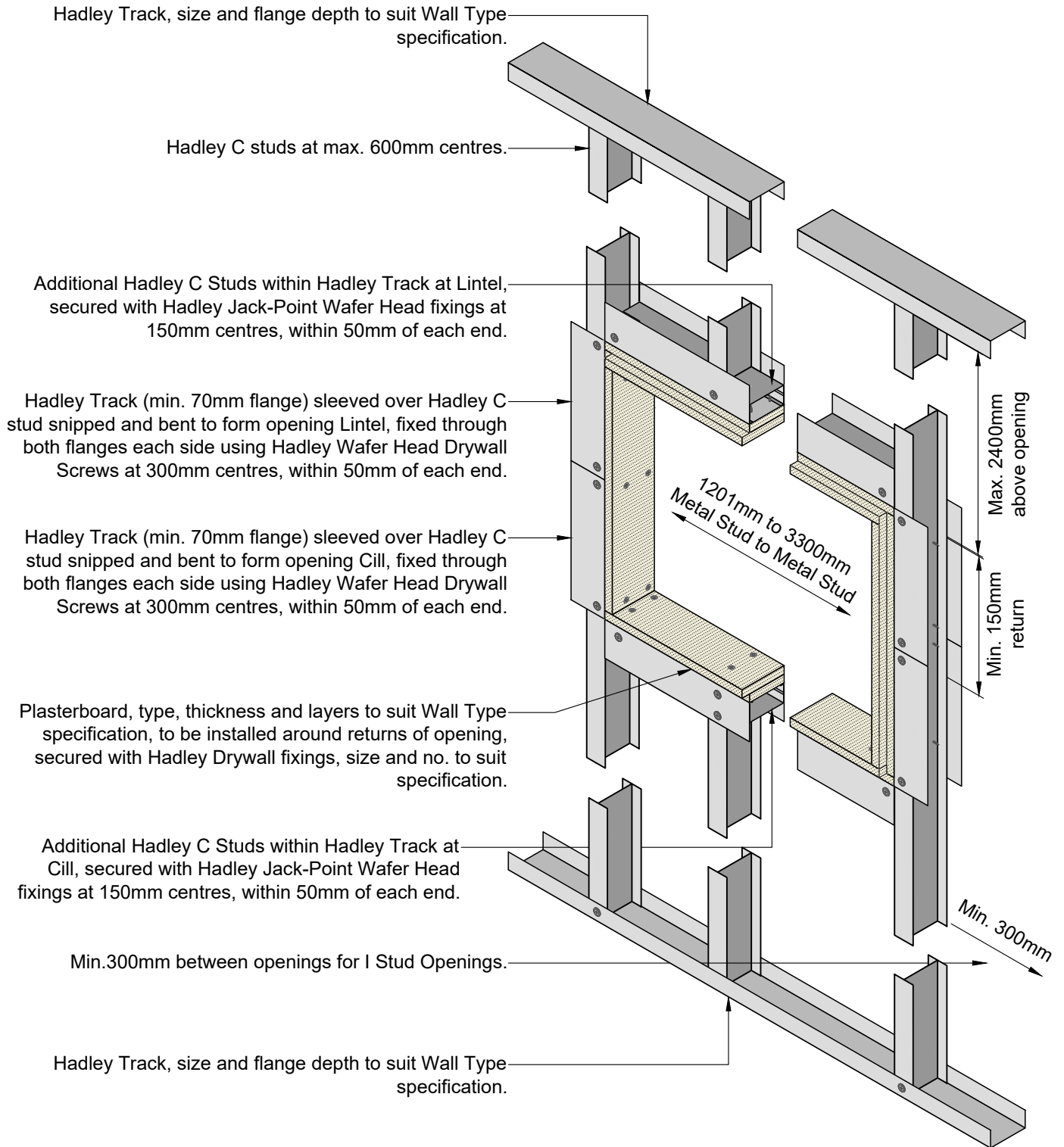
HadleyLINE
Lining - IWL Double Layer
Max. 1200mm Opening

Scale:	Date:	Drawn:	Checked:	Dwg No:	Revision:
1:10 @ A4	Dec 21	SD	JS	DRY-HAD-XX-ZZ-DT-X-1413	00

All performance data and system specifications are for systems constructed with materials & components as shown. The inclusion or substitution of any other manufacturers materials or components could invalidate test data and system performance. The information is provided in good faith and is based upon details received which are assumed to include all relevant facts. No duty of care is owed to the recipient or any other third party and Hadley Industries PLC cannot accept liability in respect of the details shown. None of the content may be distributed or copied directly without prior approval.

Stud and track depths and gauge to suit specification.
Fixing type to suit metalwork gauge.

Ensure that all penetrations are suitably fire stopped and tested by firestopping manufacturer for use in drylining systems. Ensure that all penetrations are confirmed with the minimum distances stated within BSEN1634-1:2014.



00	DEC21	First Issue	SD	JS	JS	System details to be read in conjunction with Hadley Group project specification pack. All applications to be built in accordance with British Standards, Building Regulations and Hadley Group tested solutions.
Rev:	Date:	Reason for Issue:	Drn:	Chk:	App:	



Hadley Group, Downing Street,
Smethwick, West Midlands B66 2PA
Tel: +44 (0) 121 555 1329
E-mail: hct@hadleygroup.co.uk

Project: Typical System Detail See project specification for exact requirements					
Title: HadleyLINE Lining - IWL Single Layer 1201mm to 3300mm Opening					
Scale: 1:10 @ A4	Date: Dec 21	Drawn: SD	Checked: JS	Dwg No: DRY-HAD-XX-ZZ-DT-X-1414	Revision: 00

All performance data and system specifications are for systems constructed with materials & components as shown. The inclusion or substitution of any other manufacturers materials or components could invalidate test data and system performance. The information is provided in good faith and is based upon details received which are assumed to include all relevant facts. No duty of care is owed to the recipient or any other third party and Hadley Industries PLC cannot accept liability in respect of the details shown. None of the content may be distributed or copied directly without prior approval.