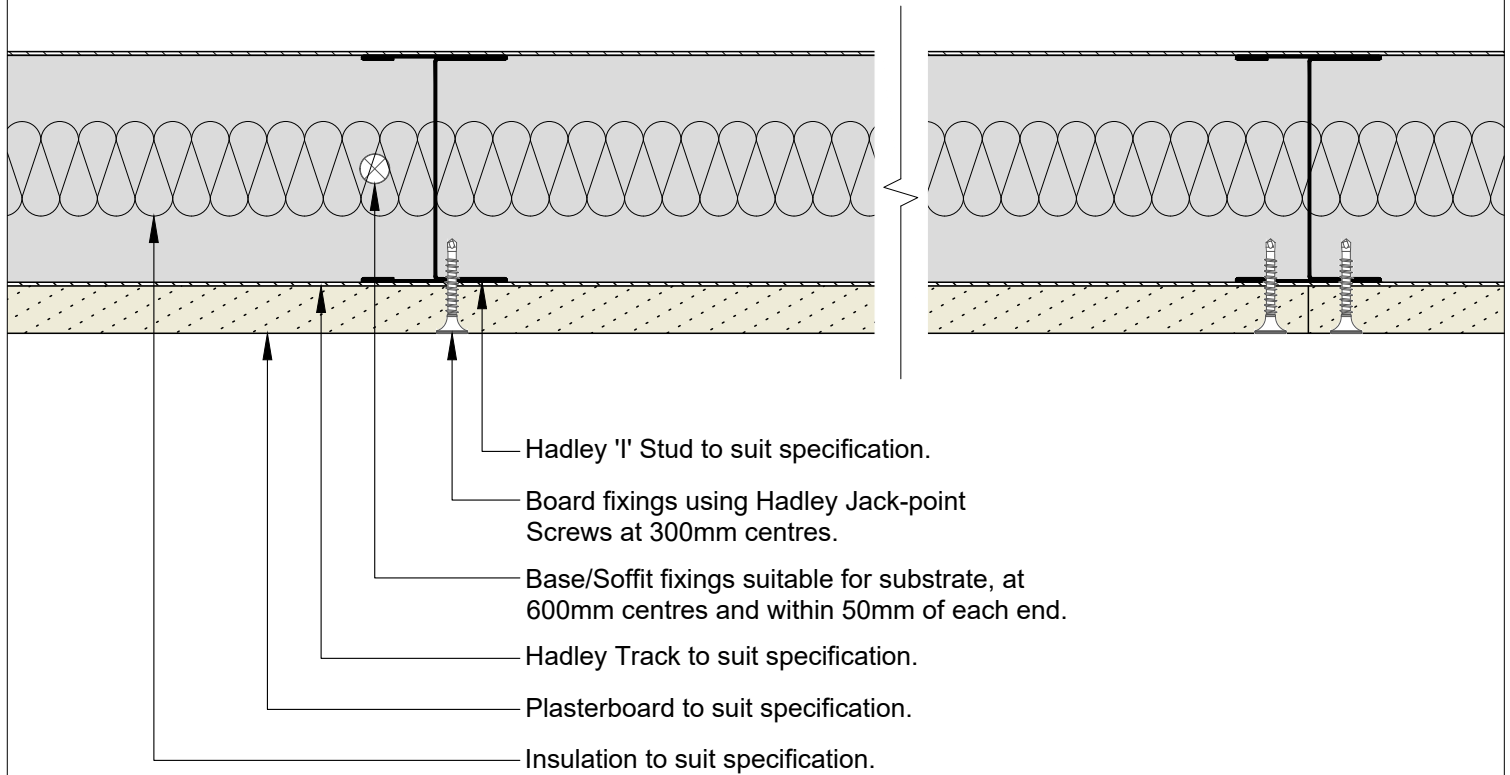


# Hadley DRYLINING

## Standard Details

Hadley LINE – Single Layer - Drawings





00	JUL21	First Issue	FM	JS	JS	System details to be read in conjunction with Hadley Group project specification pack. All applications to be built in accordance with British Standards, Building Regulations and Hadley Group tested solutions.
Rev:	Date:	Reason for Issue:	Drn:	Chk:	App:	



Hadley Group, Downing Street,  
Smethwick, West Midlands B66 2PA

Tel: +44 (0) 121 555 1329

E-mail: hct@hadleygroup.co.uk

Project:

Typical System Detail  
See project specification for exact requirements

Title:

**HadleyLINE**  
IWL Single Layer  
Plan

Scale:

1:2 @ A4

Date:

Jul 21

Drawn:

FM

Checked:

JS

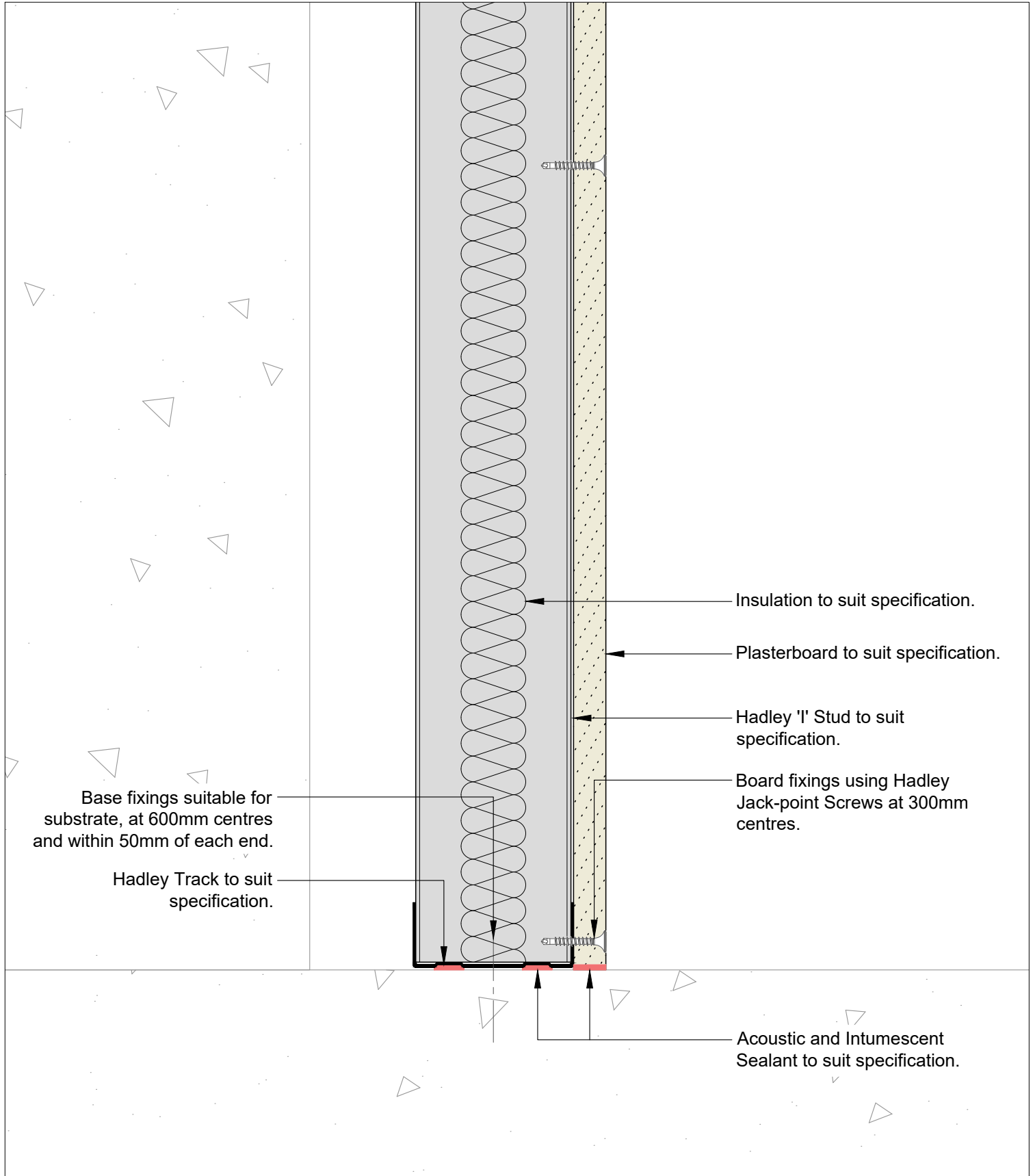
Dwg No:


**DRY-HAD-XX-ZZ-DT-X-1301**

Revision:

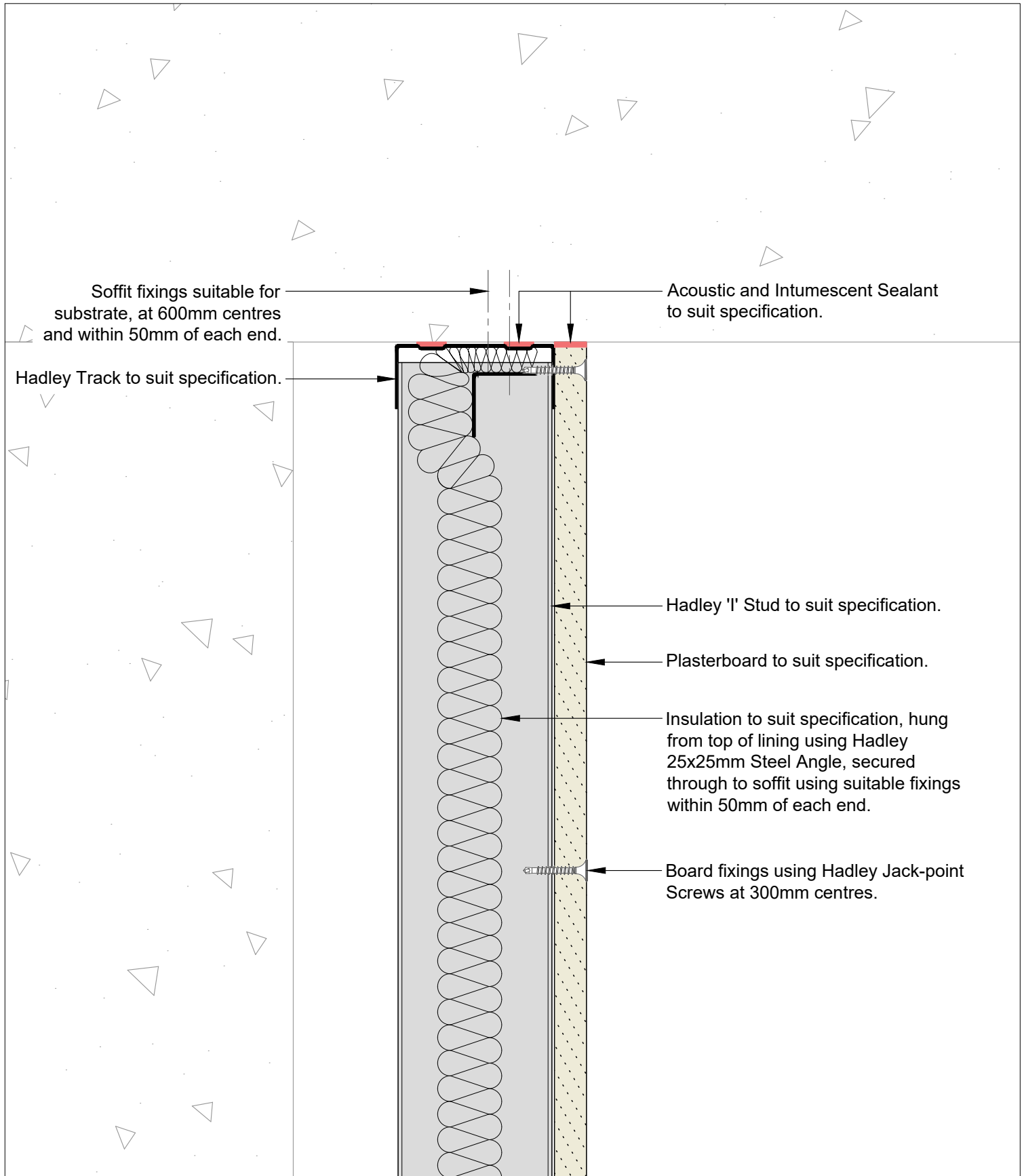
**00**

All performance data and system specifications are for systems constructed with materials & components as shown. The inclusion or substitution of any other manufacturers materials or components could invalidate test data and system performance. The information is provided in good faith and is based upon details received which are assumed to include all relevant facts. No duty of care is owed to the recipient or any other third party and Hadley Industries PLC cannot accept liability in respect of the details shown. None of the content may be distributed or copied directly without prior approval.



00	JUL21	First Issue	FM	JS	JS	System details to be read in conjunction with Hadley Group project specification pack. All applications to be built in accordance with British Standards, Building Regulations and Hadley Group tested solutions.	
Rev:	Date:	Reason for Issue:	Drn:	Chk:	App:		
 <p>Hadley Group, Downing Street, Smethwick, West Midlands B66 2PA</p> <p>Tel: +44 (0) 121 555 1329</p> <p>E-mail: hct@hadleygroup.co.uk</p>						Project:	
						Typical System Detail See project specification for exact requirements	
						Title: <b>HadleyLINE</b> IWL Single Layer Base	
Scale:		Date:	Drawn:	Checked:	Dwg No:		Revision:
1:2 @ A4		Jul 21	FM	JS	<b>DRY-HAD-XX-ZZ-DT-X-1302</b>		<b>00</b>

All performance data and system specifications are for systems constructed with materials & components as shown. The inclusion or substitution of any other manufacturers materials or components could invalidate test data and system performance. The information is provided in good faith and is based upon details received which are assumed to include all relevant facts. No duty of care is owed to the recipient or any other third party and Hadley Industries PLC cannot accept liability in respect of the details shown. None of the content may be distributed or copied directly without prior approval.



00	JUL21	First Issue	FM	JS	JS	System details to be read in conjunction with Hadley Group project specification pack. All applications to be built in accordance with British Standards, Building Regulations and Hadley Group tested solutions.
Rev:	Date:	Reason for Issue:	Drn:	Chk:	App:	



Hadley Group, Downing Street,  
Smethwick, West Midlands B66 2PA

Tel: +44 (0) 121 555 1329

E-mail: hct@hadleygroup.co.uk

Project:

Typical System Detail  
See project specification for exact requirements

Title:

**HadleyLINE**  
IWL Single Layer  
Fixed Head

Scale:

1:2 @ A4

Date:

Jul 21

Drawn:

FM

Checked:

JS

Dwg No:

**DRY-HAD-XX-ZZ-DT-X-1303**

Revision:

**00**

All performance data and system specifications are for systems constructed with materials & components as shown. The inclusion or substitution of any other manufacturers materials or components could invalidate test data and system performance. The information is provided in good faith and is based upon details received which are assumed to include all relevant facts. No duty of care is owed to the recipient or any other third party and Hadley Industries PLC cannot accept liability in respect of the details shown. None of the content may be distributed or copied directly without prior approval.

Min. Deflection to suit structural engineer design	Min. Head Track Fillet(s)	Hadley Track Flange
5mm	1x15mm Plasterboard	25mm
9mm	1x19mm CoreBoard	25mm
15mm	2x12.5mm Plasterboard	50mm
20mm	2x15mm Plasterboard	50mm
28mm	2x19mm CoreBoard	50mm
35mm	3x15mm Plasterboard	70mm

Soffit fixings suitable for substrate, at 600mm centres and within 50mm of each end.

Head Track Fillets, refer to deflection table.

Acoustic and Intumescent Sealant to suit specification.

Hadley Track to suit specification and deflection allowance.

Hadley 'I' Stud to suit specification.

Deflection allowance between board and soffit.

Face boards to overlap Head Track Fillets by minimum 10mm.

Deflection allowance between stud and track.

Deflection allowance between flat plate and track.

Hadley Flat Plate secured to stud using 2Nø Hadley Wafer Head Jack-point Screws.

Plasterboard to suit specification.

Insulation to suit specification, hung from top of lining using Hadley 25x25mm Steel Angle, secured to head track using Hadley Drywall Screws within 50mm of each end.

Board fixings using Hadley Jack-point Screws at 300mm centres.

00	JUL21	First Issue	FM	JS	JS	System details to be read in conjunction with Hadley Group project specification pack. All applications to be built in accordance with British Standards, Building Regulations and Hadley Group tested solutions.
Rev:	Date:	Reason for Issue:	Drn:	Chk:	App:	



Hadley Group, Downing Street,  
Smethwick, West Midlands B66 2PA

Tel: +44 (0) 121 555 1329

E-mail: hct@hadleygroup.co.uk

Project:

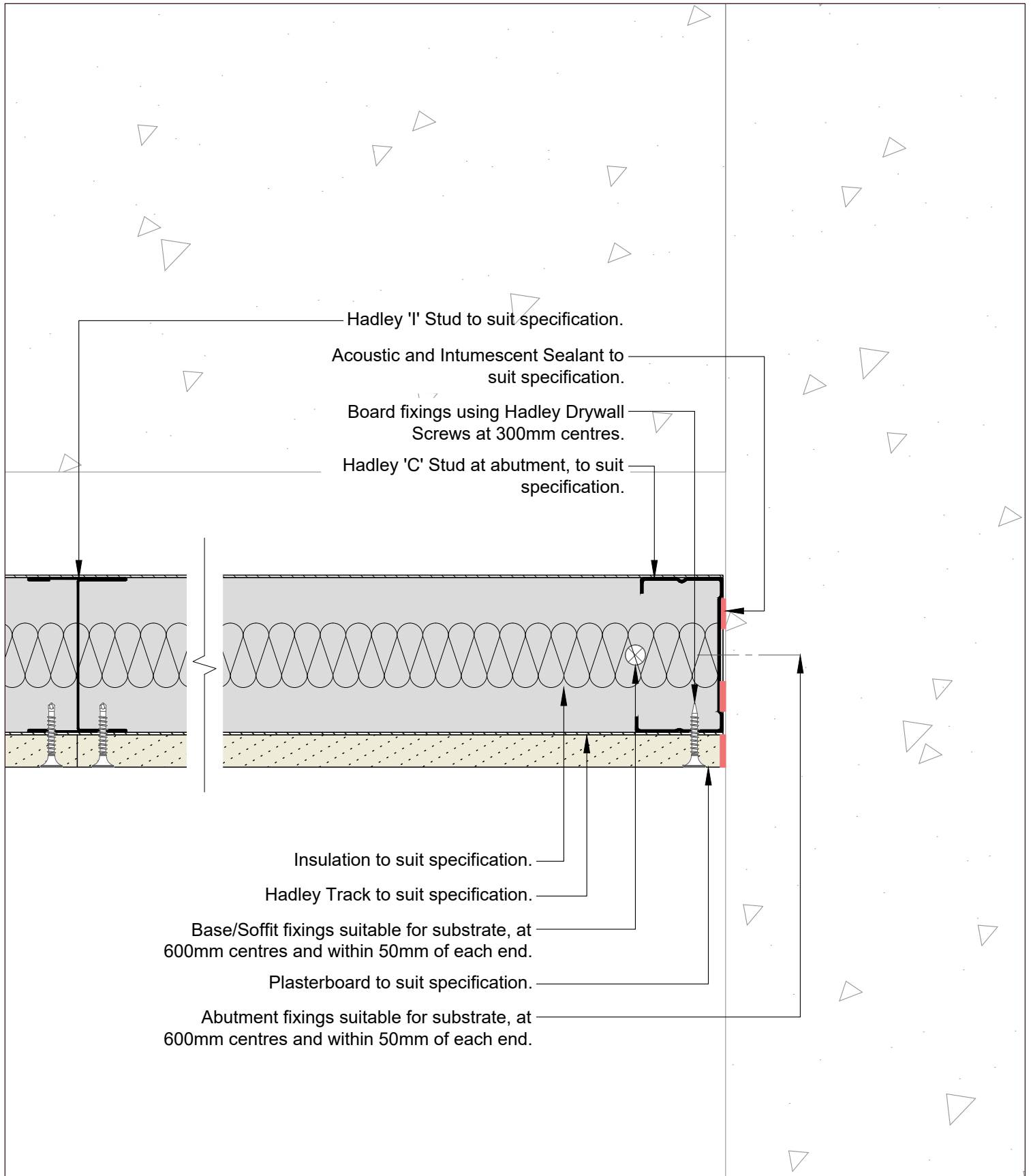
Typical System Detail  
See project specification for exact requirements

Title:

**HadleyLINE**  
IWL Single Layer  
Deflection Head

Scale:	Date:	Drawn:	Checked:	Dwg No:	Revision:
1:2 @ A4	Jul 21	FM	JS	<b>DRY-HAD-XX-ZZ-DT-X-1304</b>	<b>00</b>

All performance data and system specifications are for systems constructed with materials & components as shown. The inclusion or substitution of any other manufacturers materials or components could invalidate test data and system performance. The information is provided in good faith and is based upon details received which are assumed to include all relevant facts. No duty of care is owed to the recipient or any other third party and Hadley Industries PLC cannot accept liability in respect of the details shown. None of the content may be distributed or copied directly without prior approval.



00	JUL21	First Issue	FM	JS	JS	System details to be read in conjunction with Hadley Group project specification pack. All applications to be built in accordance with British Standards, Building Regulations and Hadley Group tested solutions.
Rev:	Date:	Reason for Issue:	Drn:	Chk:	App:	



Hadley Group, Downing Street,  
Smethwick, West Midlands B66 2PA

Tel: +44 (0) 121 555 1329

E-mail: hct@hadleygroup.co.uk

Project:

Typical System Detail  
See project specification for exact requirements

Title:

**HadleyLINE**  
IWL Single Layer  
Abutment to Concrete/Blockwork

Scale:

1:2 @ A4

Date:

Jul 21

Drawn:

FM

Checked:

JS

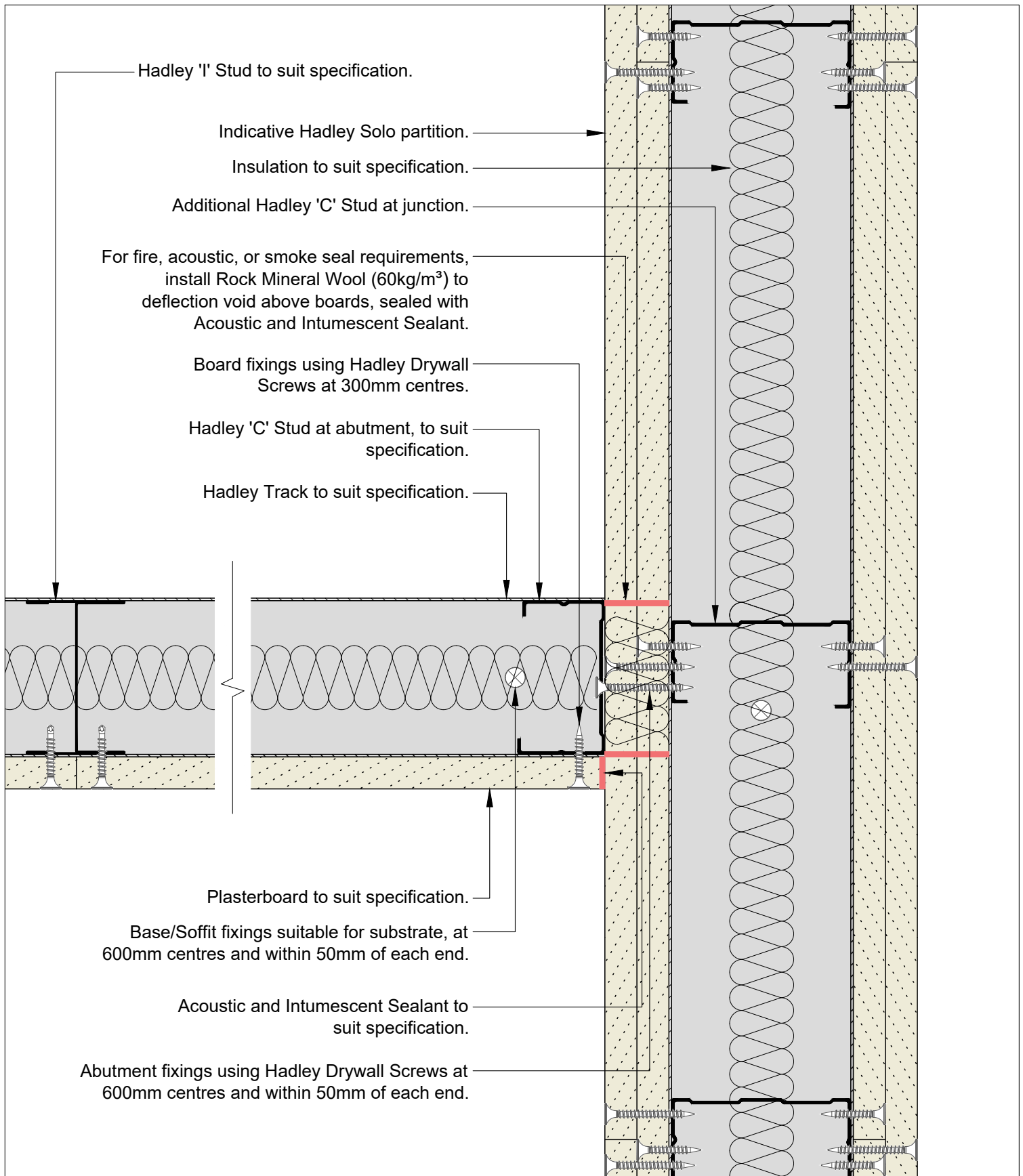
Dwg No:

**DRY-HAD-XX-ZZ-DT-X-1305**

Revision:

**00**

All performance data and system specifications are for systems constructed with materials & components as shown. The inclusion or substitution of any other manufacturers materials or components could invalidate test data and system performance. The information is provided in good faith and is based upon details received which are assumed to include all relevant facts. No duty of care is owed to the recipient or any other third party and Hadley Industries PLC cannot accept liability in respect of the details shown. None of the content may be distributed or copied directly without prior approval.



00	JUL21	First Issue	FM	JS	JS	System details to be read in conjunction with Hadley Group project specification pack. All applications to be built in accordance with British Standards, Building Regulations and Hadley Group tested solutions.
Rev:	Date:	Reason for Issue:	Drn:	Chk:	App:	



Hadley Group, Downing Street,  
Smethwick, West Midlands B66 2PA

Tel: +44 (0) 121 555 1329

E-mail: hct@hadleygroup.co.uk

Project:

Typical System Detail  
See project specification for exact requirements

Title:

**HadleyLINE**  
IWL Single Layer  
Abutment to Drylining Partition

Scale:

1:2 @ A4

Date:

Jul 21

Drawn:

FM

Checked:

JS

Dwg No:

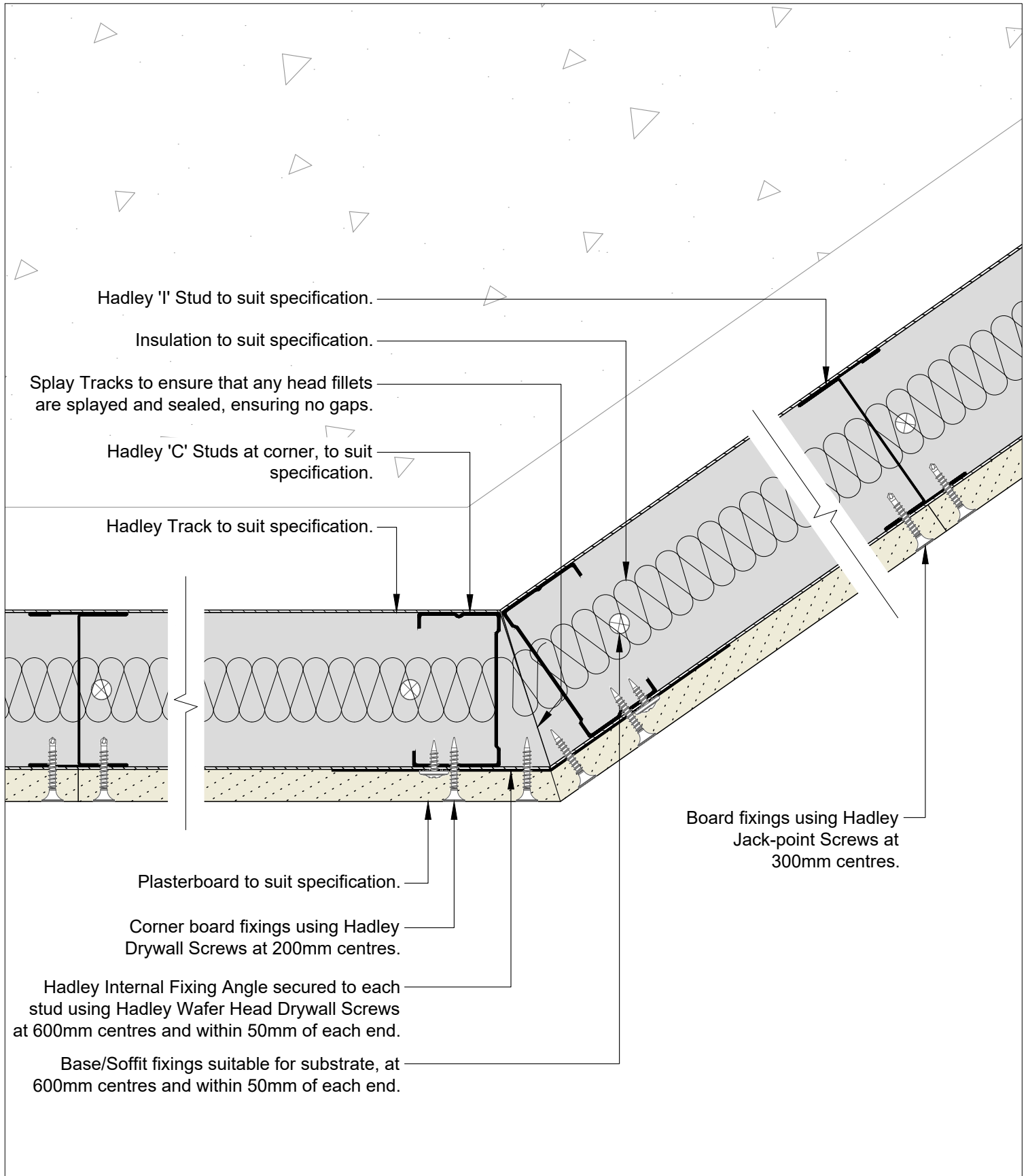
**DRY-HAD-XX-ZZ-DT-X-1306**

Revision:

**00**

All performance data and system specifications are for systems constructed with materials & components as shown. The inclusion or substitution of any other manufacturers materials or components could invalidate test data and system performance. The information is provided in good faith and is based upon details received which are assumed to include all relevant facts. No duty of care is owed to the recipient or any other third party and Hadley Industries PLC cannot accept liability in respect of the details shown. None of the content may be distributed or copied directly without prior approval.





00	JUL21	First Issue	FM	JS	JS	System details to be read in conjunction with Hadley Group project specification pack. All applications to be built in accordance with British Standards, Building Regulations and Hadley Group tested solutions.
Rev:	Date:	Reason for Issue:	Drn:	Chk:	App:	



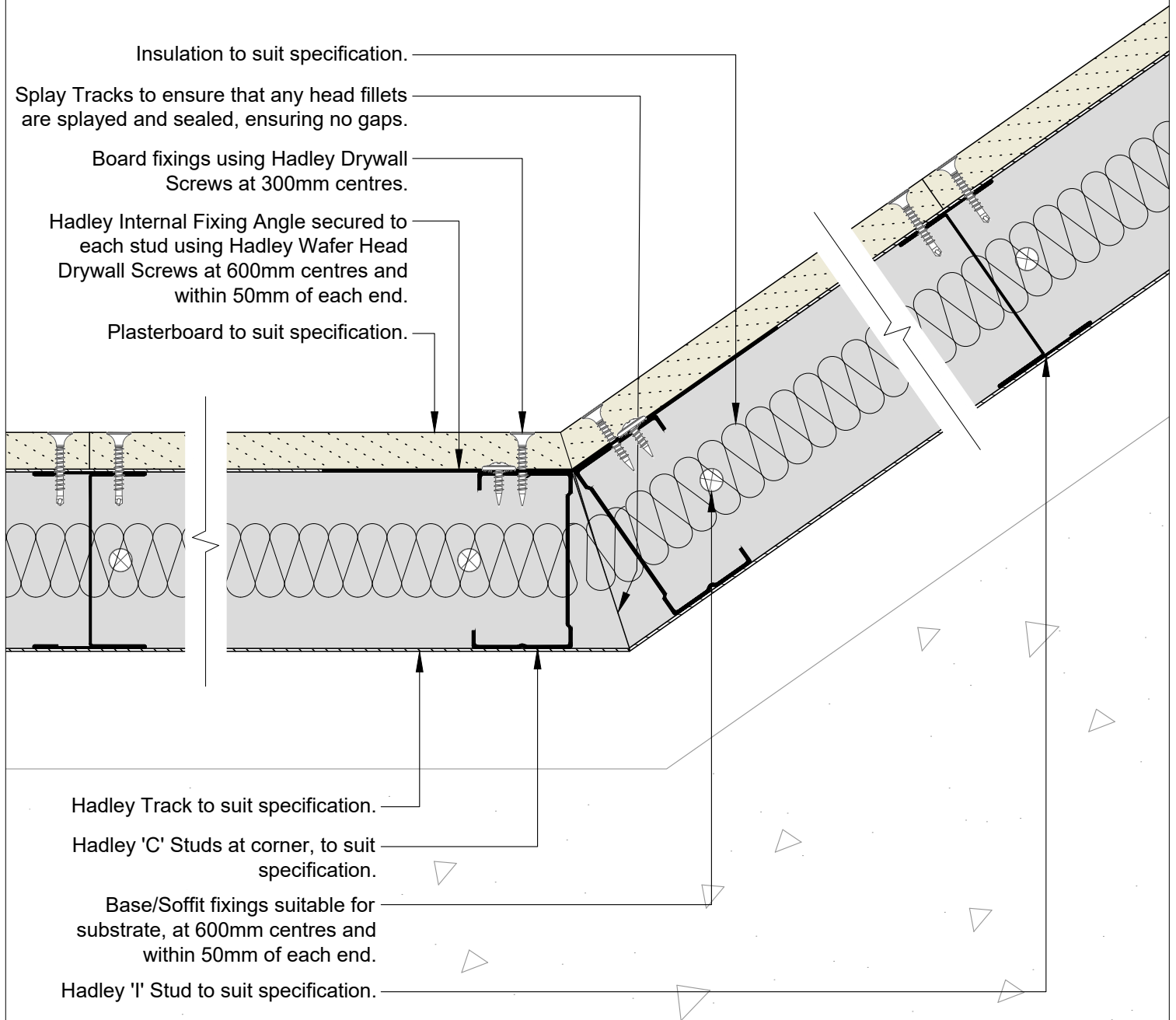
Hadley Group, Downing Street,  
Smethwick, West Midlands B66 2PA  
Tel: +44 (0) 121 555 1329  
E-mail: hct@hadleygroup.co.uk

Project: Typical System Detail See project specification for exact requirements					
Title: <b>HadleyLINE</b> IWL Single Layer Splayed Corner Internal					

Scale: 1:2 @ A4	Date: Jul 21	Drawn: FM	Checked: JS	Dwg No: <b>DRY-HAD-XX-ZZ-DT-X-1307</b>	Revision: <b>00</b>
--------------------	-----------------	--------------	----------------	---	------------------------

All performance data and system specifications are for systems constructed with materials & components as shown. The inclusion or substitution of any other manufacturers materials or components could invalidate test data and system performance. The information is provided in good faith and is based upon details received which are assumed to include all relevant facts. No duty of care is owed to the recipient or any other third party and Hadley Industries PLC cannot accept liability in respect of the details shown. None of the content may be distributed or copied directly without prior approval.





00	JUL21	First Issue	FM	JS	JS	System details to be read in conjunction with Hadley Group project specification pack. All applications to be built in accordance with British Standards, Building Regulations and Hadley Group tested solutions.
Rev:	Date:	Reason for Issue:	Drn:	Chk:	App:	



Hadley Group, Downing Street,  
Smethwick, West Midlands B66 2PA  
Tel: +44 (0) 121 555 1329  
E-mail: hct@hadleygroup.co.uk

Project:

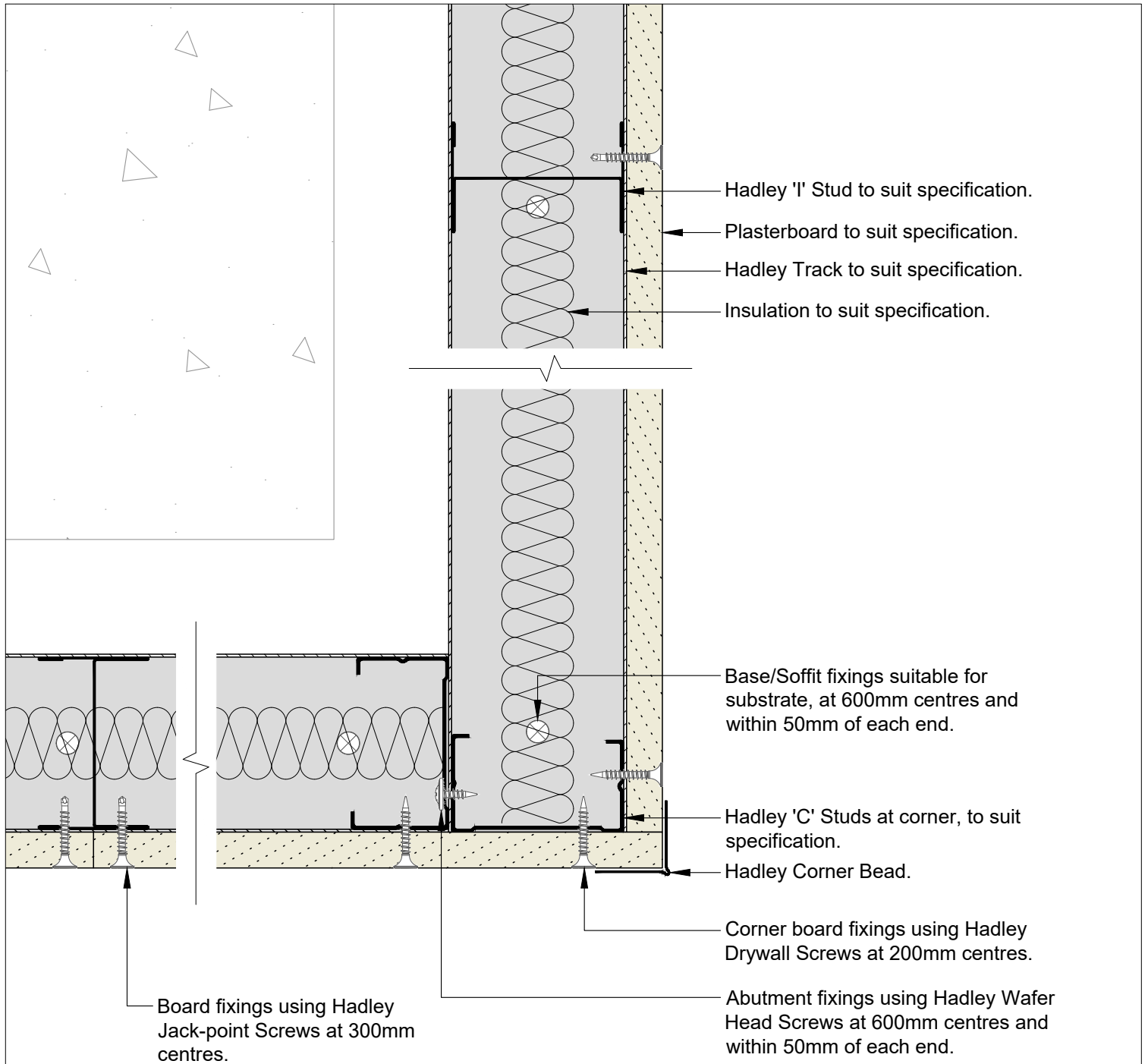
Typical System Detail  
See project specification for exact requirements

Title:

**HadleyLINE**  
IWL Single Layer  
Splayed Corner External

Scale:	Date:	Drawn:	Checked:	Dwg No:	Revision:
1:2 @ A4	Jul 21	FM	JS	<b>DRY-HAD-XX-ZZ-DT-X-1308</b>	<b>00</b>

All performance data and system specifications are for systems constructed with materials & components as shown. The inclusion or substitution of any other manufacturers materials or components could invalidate test data and system performance. The information is provided in good faith and is based upon details received which are assumed to include all relevant facts. No duty of care is owed to the recipient or any other third party and Hadley Industries PLC cannot accept liability in respect of the details shown. None of the content may be distributed or copied directly without prior approval.



00	JUL21	First Issue	FM	JS	JS	System details to be read in conjunction with Hadley Group project specification pack. All applications to be built in accordance with British Standards, Building Regulations and Hadley Group tested solutions.
Rev:	Date:	Reason for Issue:	Drn:	Chk:	App:	



Hadley Group, Downing Street,  
Smethwick, West Midlands B66 2PA

Tel: +44 (0) 121 555 1329

E-mail: hct@hadleygroup.co.uk

Project:

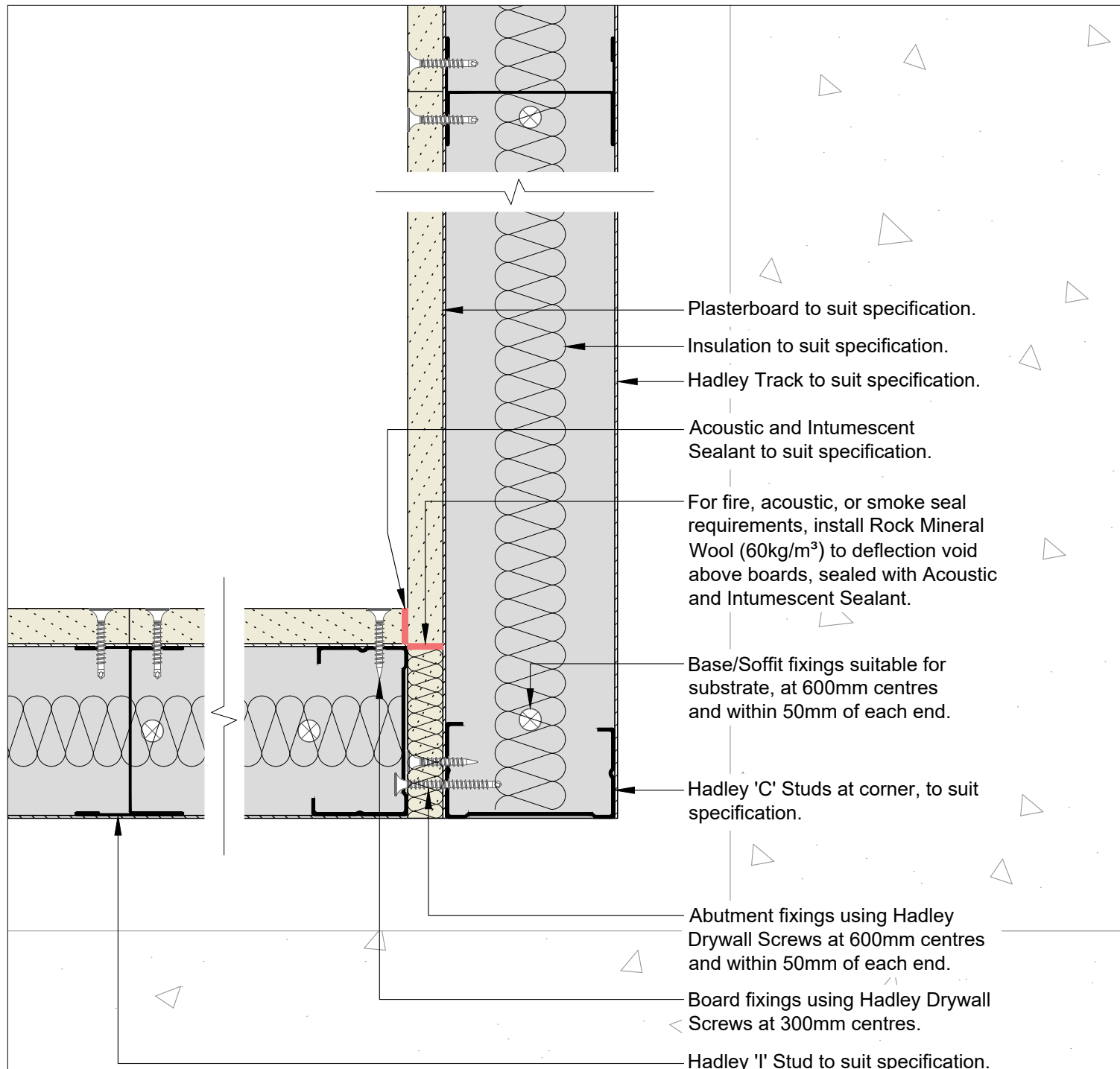
Typical System Detail  
See project specification for exact requirements

Title:

**HadleyLINE**  
IWL Single Layer  
90° Corner External

Scale:	Date:	Drawn:	Checked:	Dwg No:	Revision:
1:2 @ A4	Jul 21	FM	JS	<b>DRY-HAD-XX-ZZ-DT-X-1309</b>	<b>00</b>

All performance data and system specifications are for systems constructed with materials & components as shown. The inclusion or substitution of any other manufacturers materials or components could invalidate test data and system performance. The information is provided in good faith and is based upon details received which are assumed to include all relevant facts. No duty of care is owed to the recipient or any other third party and Hadley Industries PLC cannot accept liability in respect of the details shown. None of the content may be distributed or copied directly without prior approval.



00	JUL21	First Issue	FM	JS	JS	System details to be read in conjunction with Hadley Group project specification pack. All applications to be built in accordance with British Standards, Building Regulations and Hadley Group tested solutions.
Rev:	Date:	Reason for Issue:	Drn:	Chk:	App:	

Project:

Typical System Detail  
See project specification for exact requirements

Title:

**HadleyLINE**  
IWL Single Layer  
90° Corner Internal

Scale:

1:2 @ A4

Date:

Jul 21

Drawn:

FM

Checked:

JS

Dwg No:

**DRY-HAD-XX-ZZ-DT-X-1310**

Revision:

**00**

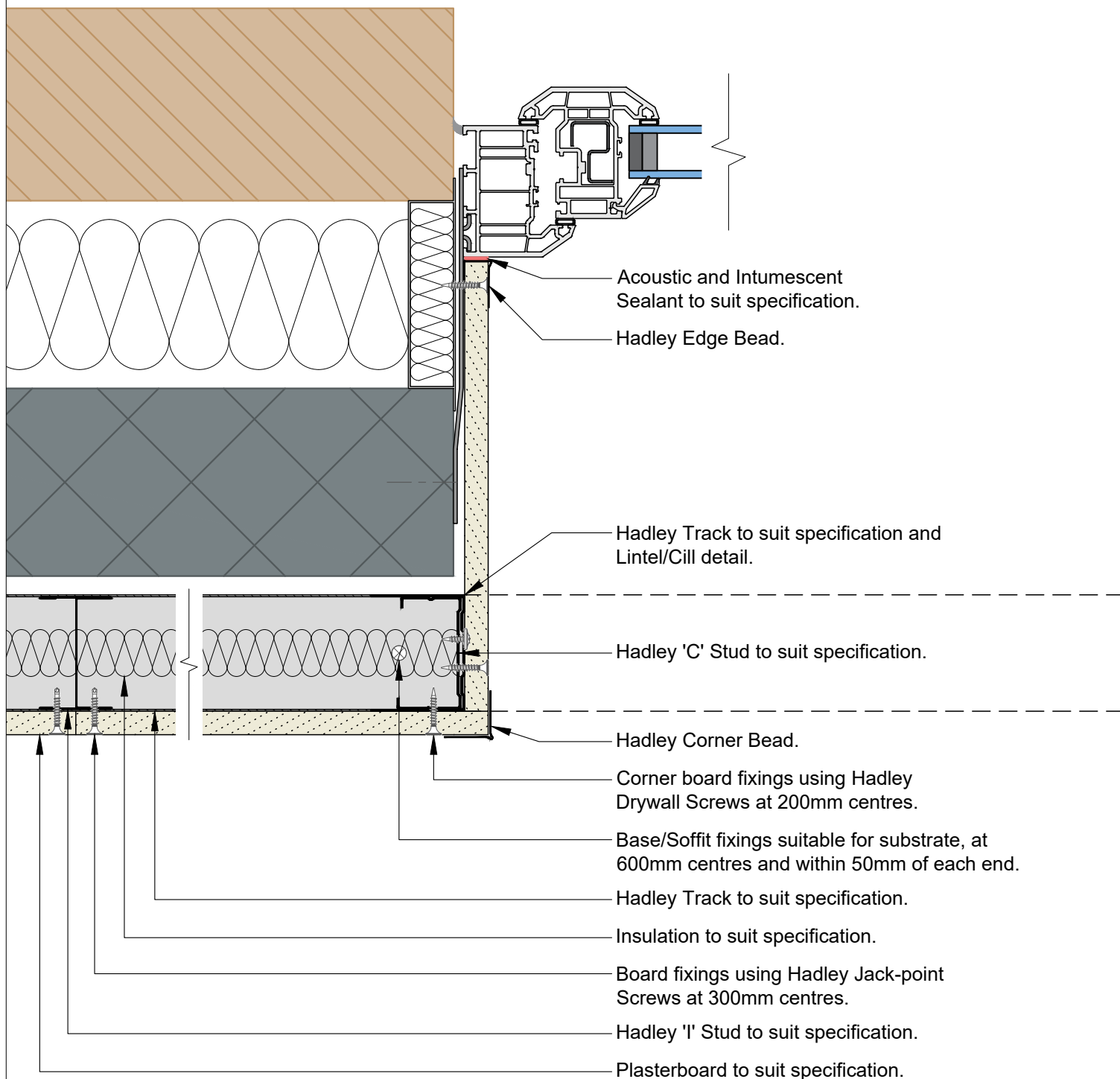


Hadley Group, Downing Street,  
Smethwick, West Midlands B66 2PA

Tel: +44 (0) 121 555 1329

E-mail: hct@hadleygroup.co.uk

All performance data and system specifications are for systems constructed with materials & components as shown. The inclusion or substitution of any other manufacturers materials or components could invalidate test data and system performance. The information is provided in good faith and is based upon details received which are assumed to include all relevant facts. No duty of care is owed to the recipient or any other third party and Hadley Industries PLC cannot accept liability in respect of the details shown. None of the content may be distributed or copied directly without prior approval.



00	JUL21	First Issue	FM	JS	JS	System details to be read in conjunction with Hadley Group project specification pack. All applications to be built in accordance with British Standards, Building Regulations and Hadley Group tested solutions.
Rev:	Date:	Reason for Issue:	Drn:	Chk:	App:	



Hadley Group, Downing Street,  
Smethwick, West Midlands B66 2PA  
Tel: +44 (0) 121 555 1329  
E-mail: hct@hadleygroup.co.uk

Project: Typical System Detail See project specification for exact requirements					
Title: <b>HadleyLINE</b> Lining - IWL Single Layer Window/Door Reveal Detail					
Scale: 1:3 @ A4	Date: Jul 21	Drawn: FM	Checked: JS	Dwg No: <b>DRY-HAD-XX-ZZ-DT-X-1311</b>	Revision: <b>00</b>

All performance data and system specifications are for systems constructed with materials & components as shown. The inclusion or substitution of any other manufacturers materials or components could invalidate test data and system performance. The information is provided in good faith and is based upon details received which are assumed to include all relevant facts. No duty of care is owed to the recipient or any other third party and Hadley Industries PLC cannot accept liability in respect of the details shown. None of the content may be distributed or copied directly without prior approval.

Plasterboard to suit specification.

Insulation to suit specification.

Hadley I Stud to suit specification.

Board fixings using Hadley Jack-point Screws at 300mm centres.

Service cut-out  
min. 100mm  
from end of stud.

Hadley Corner Bead.

Hadley Track to suit specification.  
Lintel detail to suit opening width.

Hadley Edge Bead.

Acoustic and Intumescent  
Sealant to suit specification.

Hadley Track to suit specification.  
Cill detail to suit opening width.

Service cut-out  
min. 100mm  
from end of stud.

00	JUL21	First Issue	FM	JS	JS	System details to be read in conjunction with Hadley Group project specification pack. All applications to be built in accordance with British Standards, Building Regulations and Hadley Group tested solutions.
Rev:	Date:	Reason for Issue:	Drn:	Chk:	App:	

Project:

Typical System Detail  
See project specification for exact requirements

Title:

**HadleyLINE**  
Lining - IWL Single Layer  
Window/Door Cill/Head Detail



Hadley Group, Downing Street,  
Smethwick, West Midlands B66 2PA

Tel: +44 (0) 121 555 1329

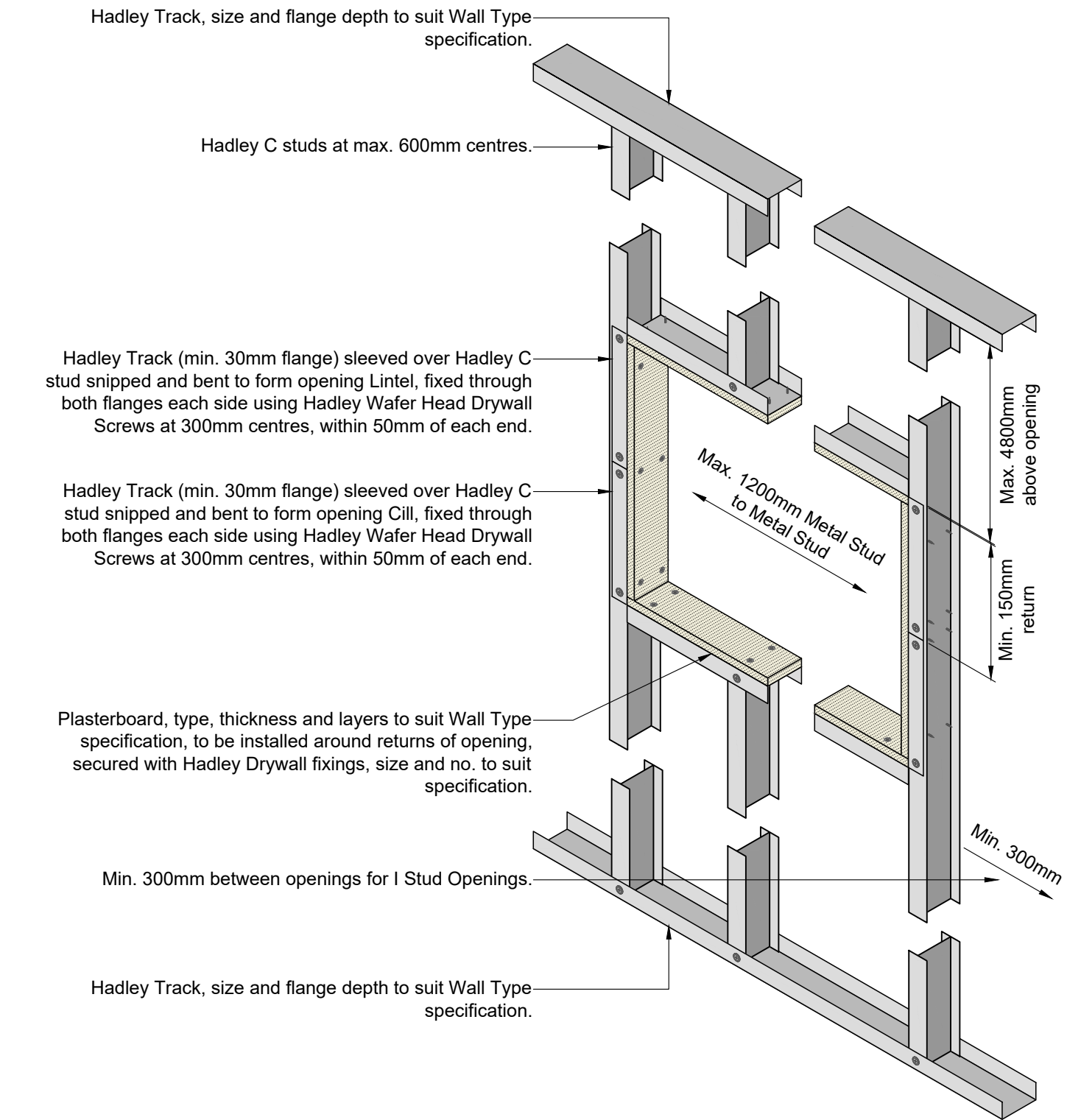
E-mail: hct@hadleygroup.co.uk

Scale:	Date:	Drawn:	Checked:	Dwg No:	Revision:
1:4 @ A4	Jul 21	FM	JS	<b>DRY-HAD-XX-ZZ-DT-X-1312</b>	<b>00</b>


All performance data and system specifications are for systems constructed with materials & components as shown. The inclusion or substitution of any other manufacturers materials or components could invalidate test data and system performance. The information is provided in good faith and is based upon details received which are assumed to include all relevant facts. No duty of care is owed to the recipient or any other third party and Hadley Industries PLC cannot accept liability in respect of the details shown. None of the content may be distributed or copied directly without prior approval.

Stud and track depths and gauge to suit specification.  
Fixing type to suit metalwork gauge.

Ensure that all penetrations are suitably fire stopped and tested by firestopping manufacturer for use in drylining systems. Ensure that all penetrations are confirmed with the minimum distances stated within BSEN1634-1:2014.



00	DEC21	First Issue	SD	JS	JS	System details to be read in conjunction with Hadley Group project specification pack. All applications to be built in accordance with British Standards, Building Regulations and Hadley Group tested solutions.
Rev:	Date:	Reason for Issue:	Drn:	Chk:	App:	



Hadley Group, Downing Street,  
Smethwick, West Midlands B66 2PA

Tel: +44 (0) 121 555 1329

E-mail: hct@hadleygroup.co.uk

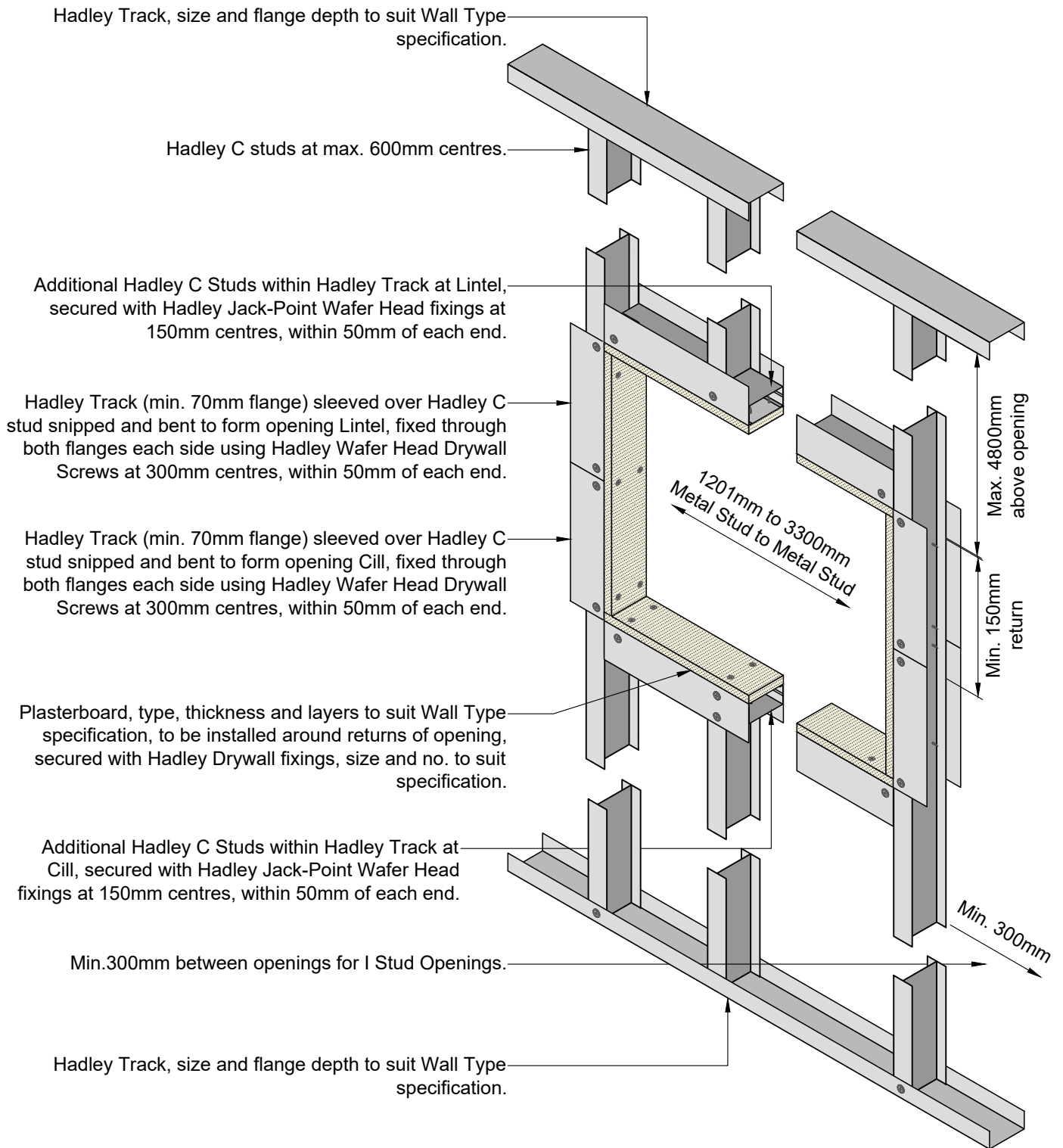
Project:  
Typical System Detail  
See project specification for exact requirements

Title:  
**HadleyLINE**  
Lining - IWL Single Layer  
Max.1200mm Opening

Scale:	Date:	Drawn:	Checked:	Dwg No:	Revision:
1:10 @ A4	Dec 21	SD	JS	<b>DRY-HAD-XX-ZZ-DT-X-1313</b>	<b>00</b>

Stud and track depths and gauge to suit specification.  
Fixing type to suit metalwork gauge.

Ensure that all penetrations are suitably fire stopped and tested by firestopping manufacturer for use in drylining systems. Ensure that all penetrations are confirmed with the minimum distances stated within BSEN1634-1:2014.



00	DEC21	First Issue	SD	JS	JS	System details to be read in conjunction with Hadley Group project specification pack. All applications to be built in accordance with British Standards, Building Regulations and Hadley Group tested solutions.
Rev:	Date:	Reason for Issue:	Drn:	Chk:	App:	



Hadley Group, Downing Street,  
Smethwick, West Midlands B66 2PA  
Tel: +44 (0) 121 555 1329  
E-mail: hct@hadleygroup.co.uk

Project:

Typical System Detail  
See project specification for exact requirements

Title:

**HadleyLINE**  
Lining - IWL Single Layer  
1201mm to 3300mm Opening

Scale:	Date:	Drawn:	Checked:	Dwg No:	Revision:
1:10 @ A4	Dec 21	SD	JS	<b>DRY-HAD-XX-ZZ-DT-X-1314</b>	<b>00</b>

All performance data and system specifications are for systems constructed with materials & components as shown. The inclusion or substitution of any other manufacturers materials or components could invalidate test data and system performance. The information is provided in good faith and is based upon details received which are assumed to include all relevant facts. No duty of care is owed to the recipient or any other third party and Hadley Industries PLC cannot accept liability in respect of the details shown. None of the content may be distributed or copied directly without prior approval.