

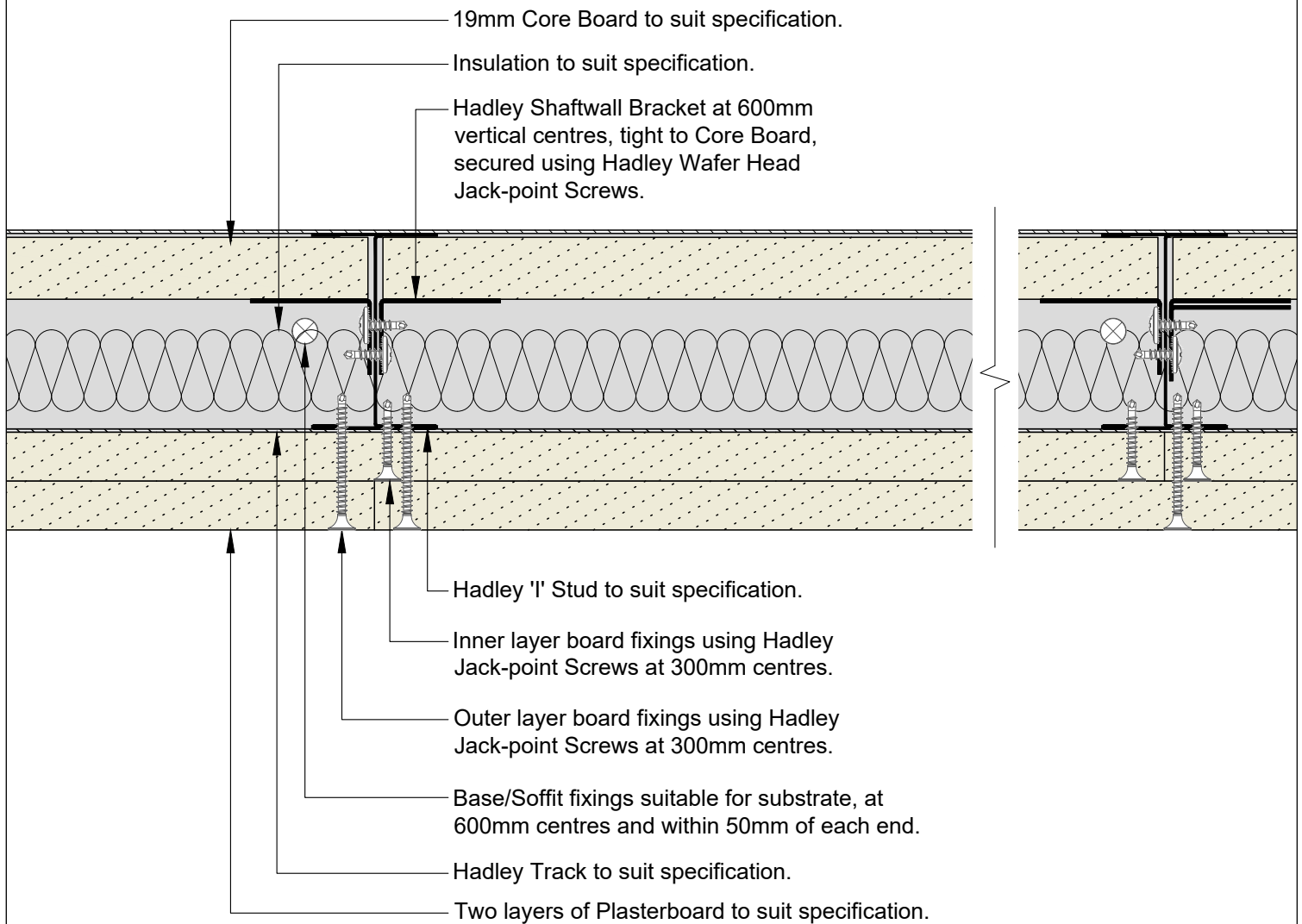
# Hadley DRYLINING

## Standard Details

Hadley SHAFT – Double Layer - Drawings



Board Thickness	Fixing Length
≤15mm	25mm
12.5mm + 12.5mm	25mm + 38mm
12.5mm + 15mm	25mm + 38mm
15mm + 15mm	25mm + 42mm



00	JUL21	First Issue	FM	JS	JS	System details to be read in conjunction with Hadley Group project specification pack. All applications to be built in accordance with British Standards, Building Regulations and Hadley Group tested solutions.
Rev:	Date:	Reason for Issue:	Drn:	Chk:	App:	

Project:  
 Typical System Detail  
 See project specification for exact requirements

Title:  
**Hadley Shaftwall**  
 Double Layer Partition  
 Plan



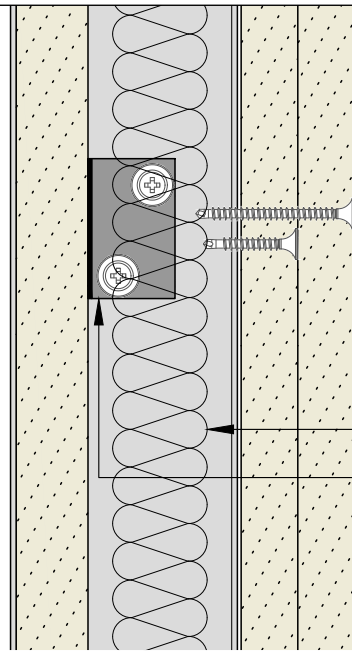
Hadley Group, Downing Street,  
 Smethwick, West Midlands B66 2PA  
 Tel: +44 (0) 121 555 1329  
 E-mail: hct@hadleygroup.co.uk

Scale: 1:2 @ A4	Date: Jul 21	Drawn: FM	Checked: JS	Dwg No: <b>DRY-HAD-XX-ZZ-DT-X-0801</b>	Revision: <b>00</b>
--------------------	-----------------	--------------	----------------	---	------------------------

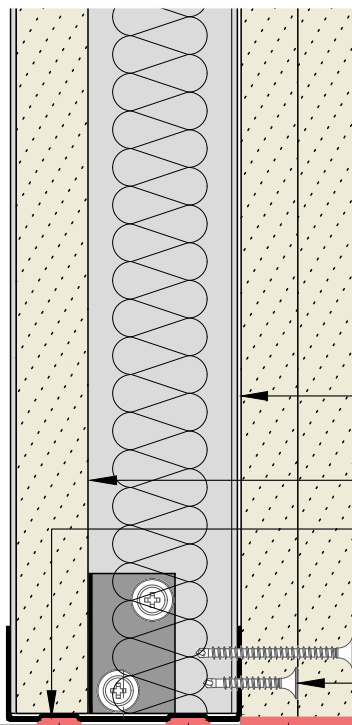
All performance data and system specifications are for systems constructed with materials & components as shown. The inclusion or substitution of any other manufacturers materials or components could invalidate test data and system performance. The information is provided in good faith and is based upon details received which are assumed to include all relevant facts. No duty of care is owed to the recipient or any other third party and Hadley Industries PLC cannot accept liability in respect of the details shown. None of the content may be distributed or copied directly without prior approval.

© 2021 Hadley Industries Holdings Limited

Board Thickness	Fixing Length
≤15mm	25mm
12.5mm + 12.5mm	25mm + 38mm
12.5mm + 15mm	25mm + 38mm
15mm + 15mm	25mm + 42mm



Insulation to suit specification.  
 Hadley Shaftwall Bracket at base and 600mm vertical centres, tight to Core Board, secured using Hadley Wafer Head Jack-point Screws.



Two layers of Plasterboard to suit specification.  
 Hadley 'I' Stud to suit specification.  
 19mm Core Board to suit specification.  
 Hadley Track to suit specification.  
 Outer layer board fixings using Hadley Jack-point Screws at 300mm centres.  
 Inner layer board fixings using Hadley Jack-point Screws at 300mm centres.  
 Acoustic and Intumescent Sealant to suit specification.  
 Base fixings suitable for substrate, at 600mm centres and within 50mm of each end.

00	JUL21	First Issue	FM	JS	JS	System details to be read in conjunction with Hadley Group project specification pack. All applications to be built in accordance with British Standards, Building Regulations and Hadley Group tested solutions.
Rev:	Date:	Reason for Issue:	Drn:	Chk:	App:	

Project:  
 Typical System Detail  
 See project specification for exact requirements

Title:  
**Hadley Shaftwall**  
 Double Layer Partition  
 Base

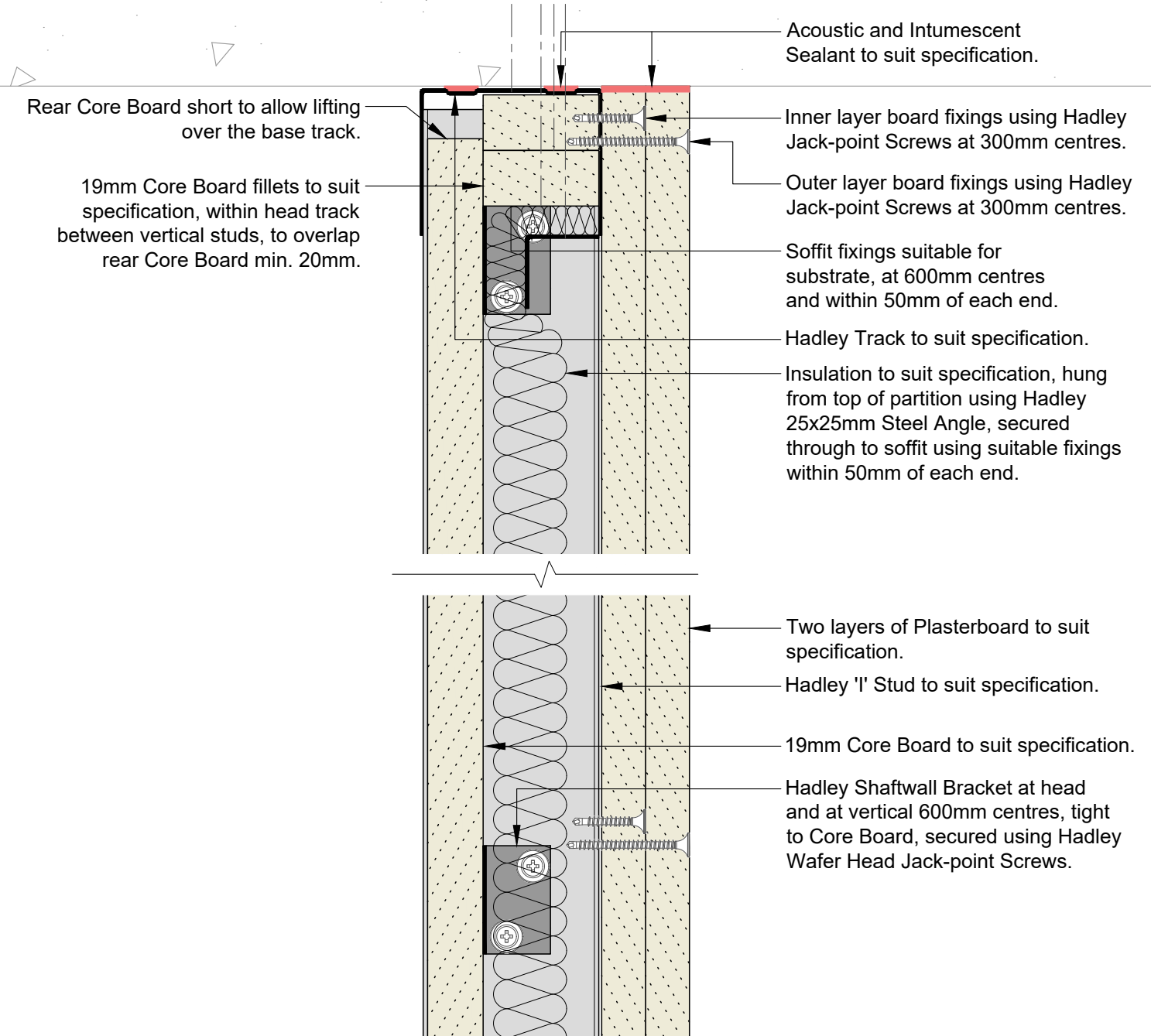


Hadley Group, Downing Street,  
 Smethwick, West Midlands B66 2PA  
 Tel: +44 (0) 121 555 1329  
 E-mail: hct@hadleygroup.co.uk

Scale:	Date:	Drawn:	Checked:	Dwg No:	Revision:
1:2 @ A4	Jul 21	FM	JS	<b>DRY-HAD-XX-ZZ-DT-X-0802</b>	<b>00</b>

All performance data and system specifications are for systems constructed with materials & components as shown. The inclusion or substitution of any other manufacturers materials or components could invalidate test data and system performance. The information is provided in good faith and is based upon details received which are assumed to include all relevant facts. No duty of care is owed to the recipient or any other third party and Hadley Industries PLC cannot accept liability in respect of the details shown. None of the content may be distributed or copied directly without prior approval.

Board Thickness	Fixing Length
≤15mm	25mm
12.5mm + 12.5mm	25mm + 38mm
12.5mm + 15mm	25mm + 38mm
15mm + 15mm	25mm + 42mm



00	JUL21	First Issue	FM	JS	JS	System details to be read in conjunction with Hadley Group project specification pack. All applications to be built in accordance with British Standards, Building Regulations and Hadley Group tested solutions.
Rev:	Date:	Reason for Issue:	Drn:	Chk:	App:	

Project:  
**Typical System Detail**  
 See project specification for exact requirements

Title:  
**Hadley Shaftwall**  
 Double Layer Partition  
 Fixed Head



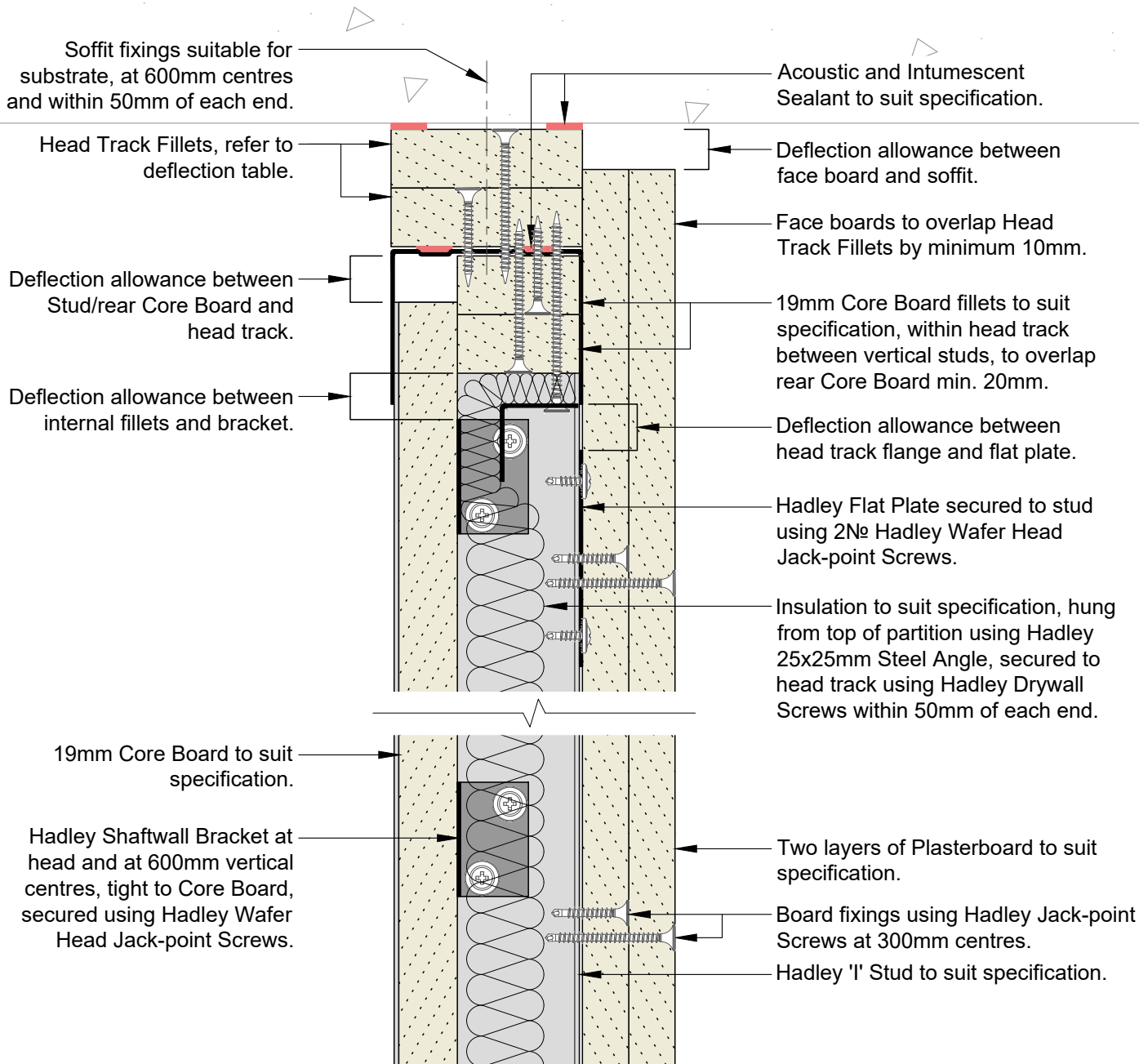
Hadley Group, Downing Street,  
 Smethwick, West Midlands B66 2PA  
 Tel: +44 (0) 121 555 1329  
 E-mail: hct@hadleygroup.co.uk

Scale:	Date:	Drawn:	Checked:	Dwg No:	Revision:
1:2 @ A4	Jul 21	FM	JS	<b>DRY-HAD-XX-ZZ-DT-X-0803</b>	<b>00</b>

All performance data and system specifications are for systems constructed with materials & components as shown. The inclusion or substitution of any other manufacturers materials or components could invalidate test data and system performance. The information is provided in good faith and is based upon details received which are assumed to include all relevant facts. No duty of care is owed to the recipient or any other third party and Hadley Industries PLC cannot accept liability in respect of the details shown. None of the content may be distributed or copied directly without prior approval.

Min. Deflection to suit structural engineer design	Min. Head Track Fillet(s)	Hadley Track Flange
5mm	1x15mm Type F Plasterboard	50mm
9mm	1x19mm Core Board	50mm
15mm	2x12.5mm Type F Plasterboard	50mm
20mm	2x15mm Type F Plasterboard	50mm
28mm	2x19mm Core Board	50mm
35mm	3x15mm Type F Plasterboard	70mm

Board Thickness	Fixing Length
≤15mm	25mm
12.5mm + 12.5mm	25mm + 38mm
12.5mm + 15mm	25mm + 38mm
15mm + 15mm	25mm + 42mm



00	JUL21	First Issue	FM	JS	JS	System details to be read in conjunction with Hadley Group project specification pack. All applications to be built in accordance with British Standards, Building Regulations and Hadley Group tested solutions.
Rev:	Date:	Reason for Issue:	Drn:	Chk:	App:	

Project: Typical System Detail See project specification for exact requirements						
Title: <b>Hadley Shaftwall</b> Double Layer Partition Deflection Head up to 60mins (EI)						
Scale:	Date:	Drawn:	Checked:	Dwg No:	Revision:	
1:2 @ A4	Jul 21	FM	JS	<b>DRY-HAD-XX-ZZ-DT-X-0804</b>	<b>00</b>	

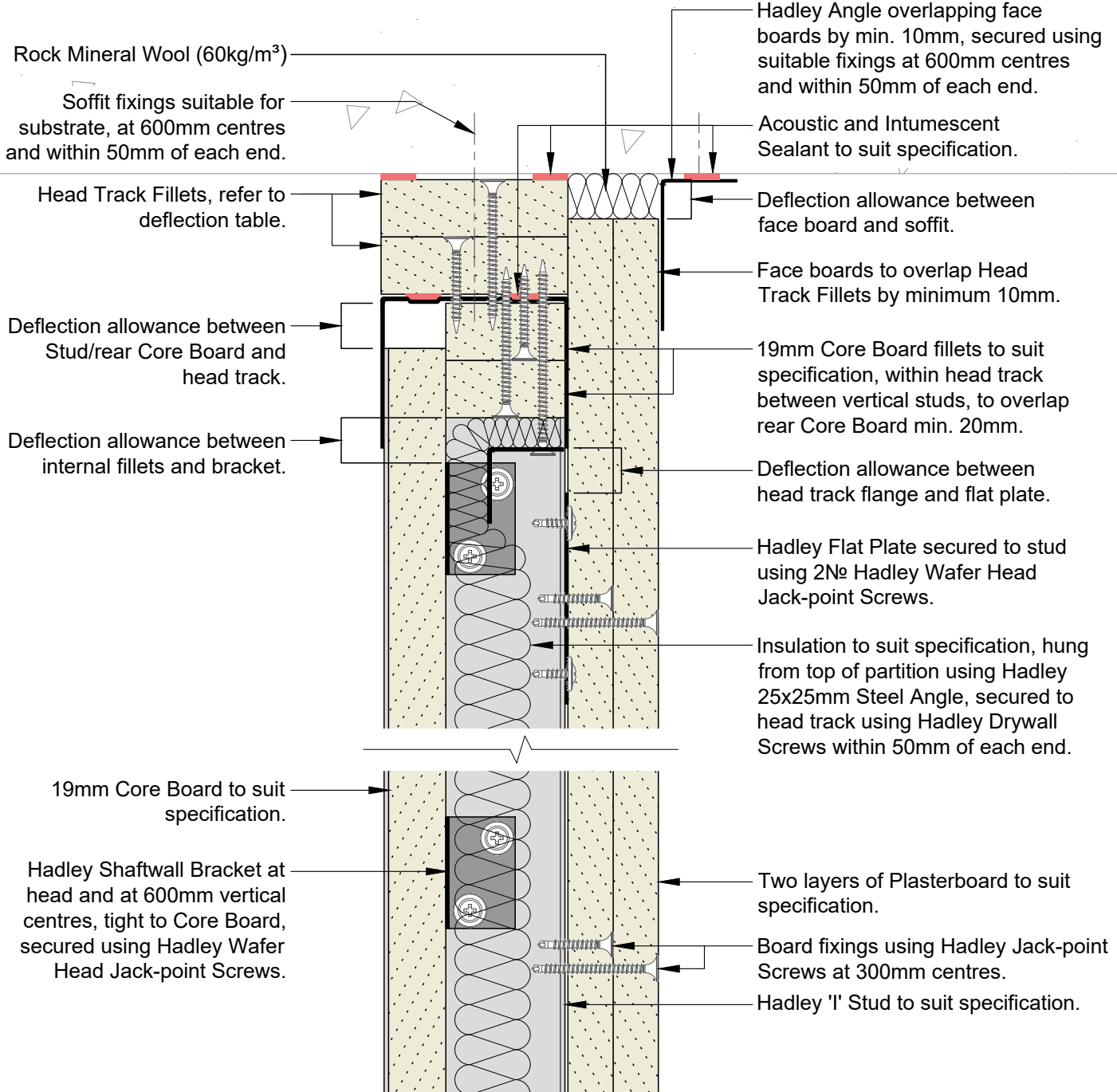


Hadley Group, Downing Street,  
Smethwick, West Midlands B66 2PA  
Tel: +44 (0) 121 555 1329  
E-mail: hct@hadleygroup.co.uk

All performance data and system specifications are for systems constructed with materials & components as shown. The inclusion or substitution of any other manufacturers materials or components could invalidate test data and system performance. The information is provided in good faith and is based upon details received which are assumed to include all relevant facts. No duty of care is owed to the recipient or any other third party and Hadley Industries PLC cannot accept liability in respect of the details shown. None of the content may be distributed or copied directly without prior approval.

Min. Deflection to suit structural engineer design	Min. Head Track Fillet(s)	Hadley Track Flange	Min. Hadley Angle
5mm	1x15mm Type F Plasterboard	50mm	19x19mm
9mm	1x19mm Core Board	50mm	19x19mm
15mm	2x12.5mm Type F Plasterboard	50mm	25x25mm
20mm	2x15mm Type F Plasterboard	50mm	25x50mm
28mm	2x19mm Core Board	50mm	25x50mm
35mm	3x15mm Type F Plasterboard	70mm	25x50mm

Board Thickness	Fixing Length
≤15mm	25mm
12.5mm + 12.5mm	25mm + 38mm
12.5mm + 15mm	25mm + 38mm
15mm + 15mm	25mm + 42mm



00	JUL21	First Issue	FM	JS	JS	System details to be read in conjunction with Hadley Group project specification pack. All applications to be built in accordance with British Standards, Building Regulations and Hadley Group tested solutions.
Rev:	Date:	Reason for Issue:	Drn:	Chk:	App:	

Project:  
**Typical System Detail**  
 See project specification for exact requirements

Title:  
**Hadley Shaftwall**  
 Double Layer Partition  
 Deflection Head up to 120mins (EI)



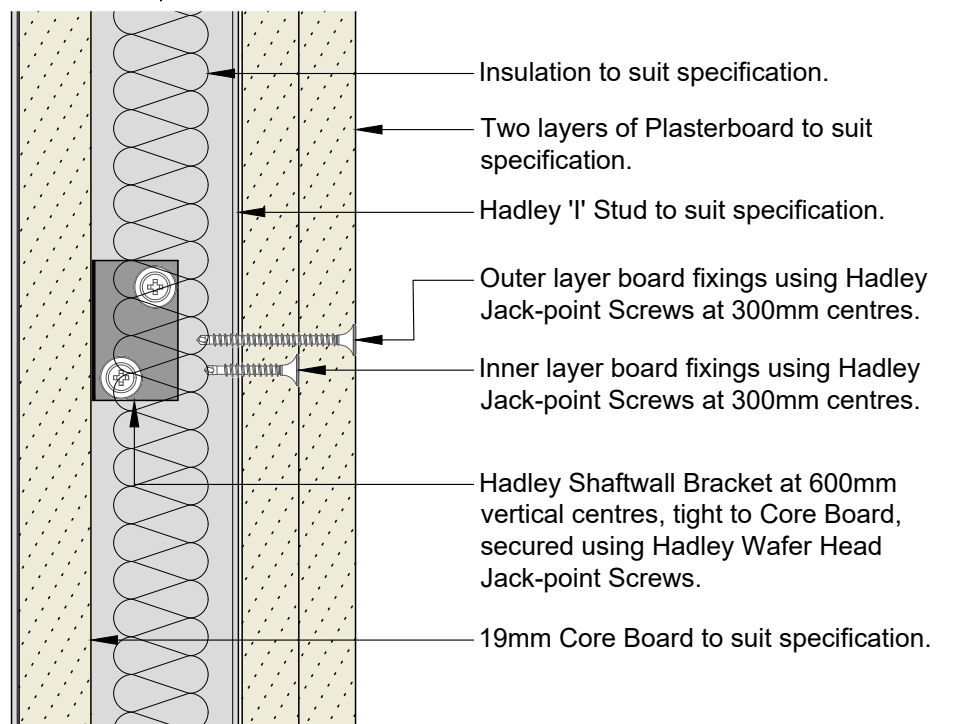
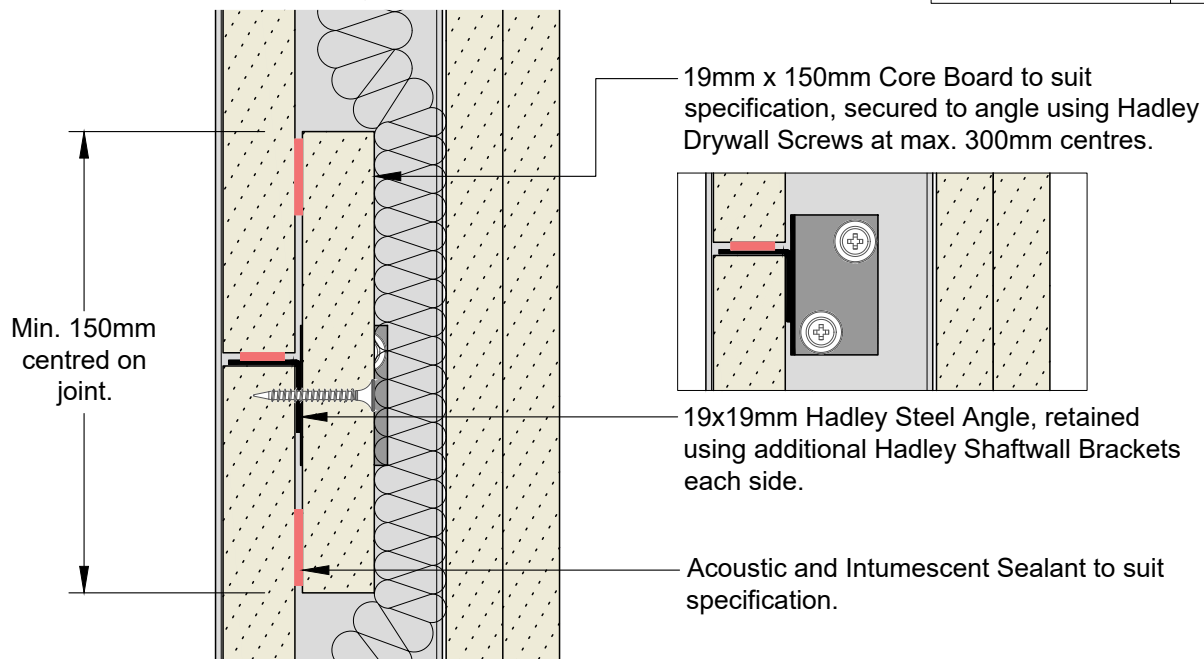
Hadley Group, Downing Street,  
 Smethwick, West Midlands B66 2PA  
 Tel: +44 (0) 121 555 1329  
 E-mail: hct@hadleygroup.co.uk

Scale:	Date:	Drawn:	Checked:	Dwg No:	Revision:
1:2 @ A4	Jul 21	FM	JS	<b>DRY-HAD-XX-ZZ-DT-X-0805</b>	<b>00</b>

All performance data and system specifications are for systems constructed with materials & components as shown. The inclusion or substitution of any other manufacturers materials or components could invalidate test data and system performance. The information is provided in good faith and is based upon details received which are assumed to include all relevant facts. No duty of care is owed to the recipient or any other third party and Hadley Industries PLC cannot accept liability in respect of the details shown. None of the content may be distributed or copied directly without prior approval.

© 2021 Hadley Industries Holdings Limited

Board Thickness	Fixing Length
≤15mm	25mm
12.5mm + 12.5mm	25mm + 38mm
12.5mm + 15mm	25mm + 38mm
15mm + 15mm	25mm + 42mm



00	JUL21	First Issue	FM	JS	JS	System details to be read in conjunction with Hadley Group project specification pack. All applications to be built in accordance with British Standards, Building Regulations and Hadley Group tested solutions.
Rev:	Date:	Reason for Issue:	Drn:	Chk:	App:	

Project:  
**Typical System Detail**  
 See project specification for exact requirements

Title:  
**Hadley Shaftwall**  
 Double Layer Partition  
 Horizontal Coreboard Joints

Scale:	Date:	Drawn:	Checked:	Dwg No:	Revision:
1:2 @ A4	Jul 21	FM	JS	<b>DRY-HAD-XX-ZZ-DT-X-0807</b>	<b>00</b>



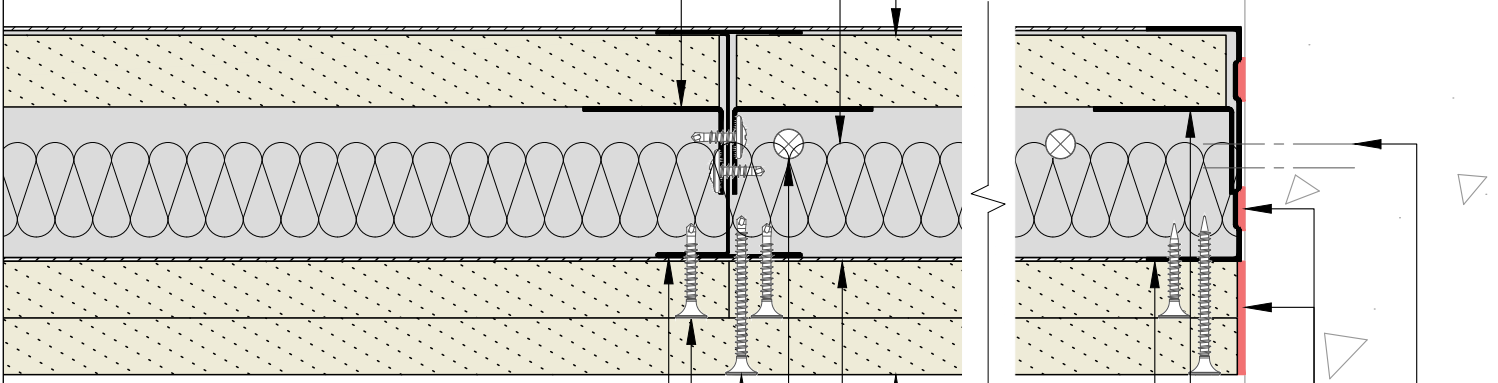
Hadley Group, Downing Street,  
 Smethwick, West Midlands B66 2PA  
 Tel: +44 (0) 121 555 1329  
 E-mail: hct@hadleygroup.co.uk

Board Thickness	Fixing Length
≤15mm	25mm
12.5mm + 12.5mm	25mm + 38mm
12.5mm + 15mm	25mm + 38mm
15mm + 15mm	25mm + 42mm

19mm Core Board to suit specification.

Insulation to suit specification.

Hadley Shaftwall Bracket at 600mm vertical centres, tight to Core Board, secured using Hadley Wafer Head Jack-point Screws.



Hadley 'I' Stud to suit specification.

Inner layer board fixings using Hadley Jack-point Screws at 300mm centres.

Outer layer board fixings using Hadley Jack-point Screws at 300mm centres.

Base/Soffit fixings suitable for substrate, at 600mm centres and within 50mm of each end.

Hadley Track to suit specification.

Two layers of Plasterboard to suit specification.

Hadley Track at abutment to suit specification.

Hadley Shaftwall Bracket at 600mm vertical centres, tight to Core Board, secured using fixings suitable for substrate.

Acoustic and Intumescent Sealant to suit specification.

Abutment fixings suitable for substrate, at 600mm centres and within 50mm of each end.

00	JUL21	First Issue	FM	JS	JS	System details to be read in conjunction with Hadley Group project specification pack. All applications to be built in accordance with British Standards, Building Regulations and Hadley Group tested solutions.
Rev:	Date:	Reason for Issue:	Drn:	Chk:	App:	

Project:  
**Typical System Detail**  
 See project specification for exact requirements

Title:  
**Hadley Shaftwall**  
 Double Layer Partition  
 Abutment to Concrete/Blockwork



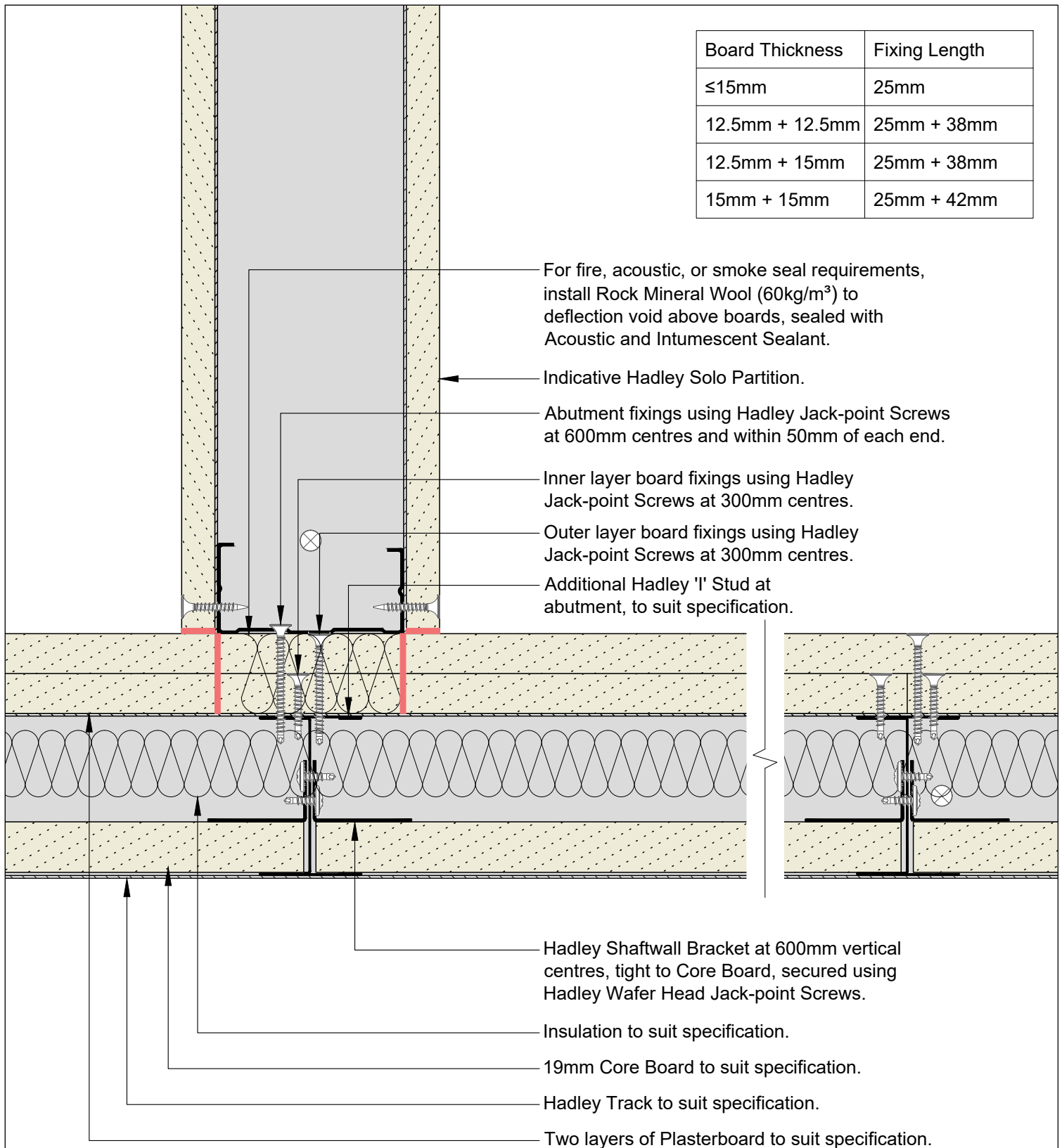
Hadley Group, Downing Street,  
 Smethwick, West Midlands B66 2PA  
 Tel: +44 (0) 121 555 1329  
 E-mail: hct@hadleygroup.co.uk

Scale:	Date:	Drawn:	Checked:	Dwg No:	Revision:
1:2 @ A4	Jul 21	FM	JS	<b>DRY-HAD-XX-ZZ-DT-X-0808</b>	<b>00</b>

All performance data and system specifications are for systems constructed with materials & components as shown. The inclusion or substitution of any other manufacturers materials or components could invalidate test data and system performance. The information is provided in good faith and is based upon details received which are assumed to include all relevant facts. No duty of care is owed to the recipient or any other third party and Hadley Industries PLC cannot accept liability in respect of the details shown. None of the content may be distributed or copied directly without prior approval.



Board Thickness	Fixing Length
≤15mm	25mm
12.5mm + 12.5mm	25mm + 38mm
12.5mm + 15mm	25mm + 38mm
15mm + 15mm	25mm + 42mm



00	JUL21	First Issue	FM	JS	JS	System details to be read in conjunction with Hadley Group project specification pack. All applications to be built in accordance with British Standards, Building Regulations and Hadley Group tested solutions.
Rev:	Date:	Reason for Issue:	Drn:	Chk:	App:	

Project:  
**Typical System Detail**  
 See project specification for exact requirements

Title:  
**Hadley Shaftwall**  
 Double Layer Partition  
 Abutment to Drylining Partition



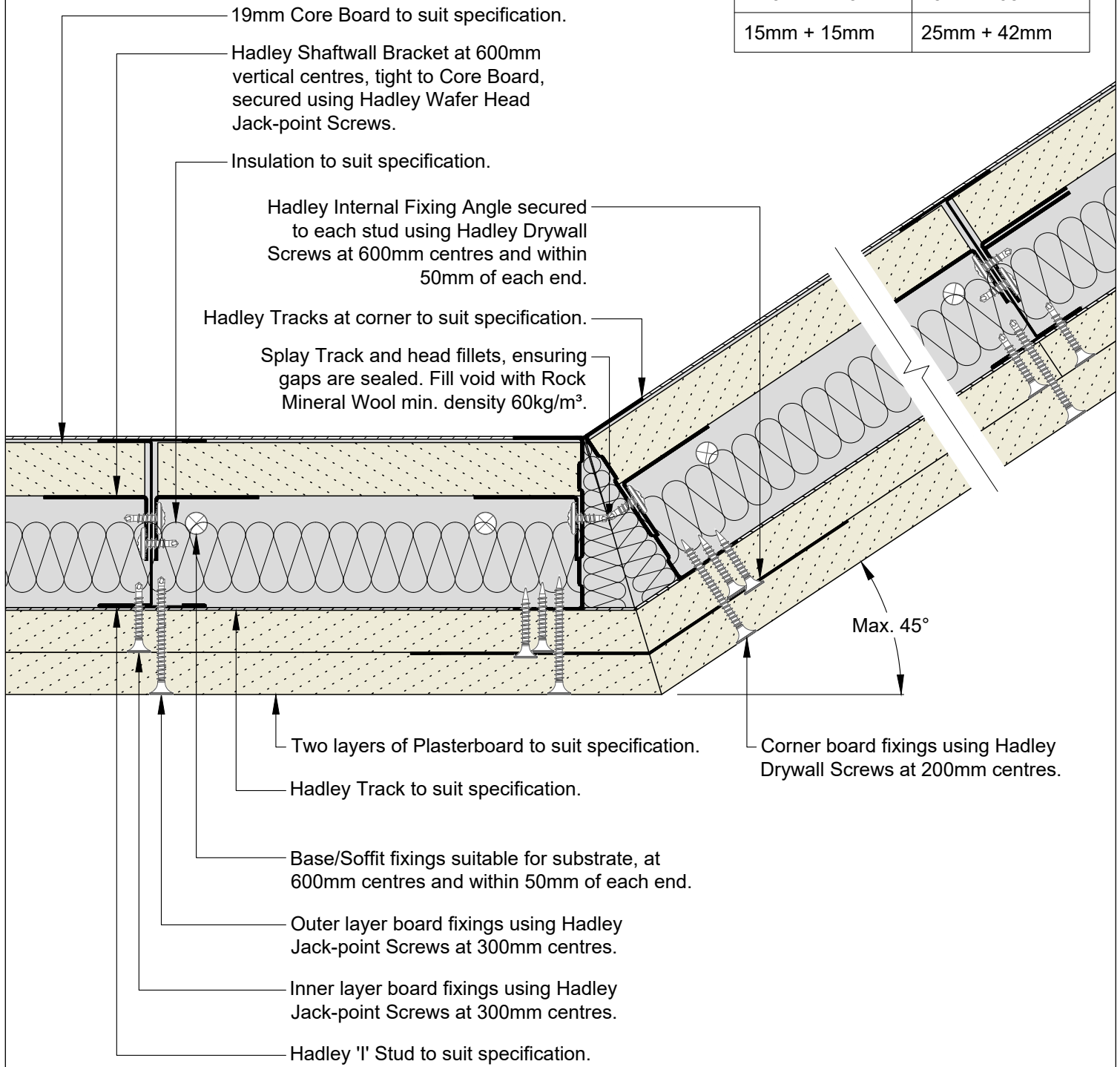
Hadley Group, Downing Street,  
 Smethwick, West Midlands B66 2PA  
 Tel: +44 (0) 121 555 1329  
 E-mail: hct@hadleygroup.co.uk

Scale: 1:2 @ A4	Date: Jul 21	Drawn: FM	Checked: JS	Dwg No: <b>DRY-HAD-XX-ZZ-DT-X-0809</b>	Revision: <b>00</b>
--------------------	-----------------	--------------	----------------	---	------------------------

All performance data and system specifications are for systems constructed with materials & components as shown. The inclusion or substitution of any other manufacturers materials or components could invalidate test data and system performance. The information is provided in good faith and is based upon details received which are assumed to include all relevant facts. No duty of care is owed to the recipient or any other third party and Hadley Industries PLC cannot accept liability in respect of the details shown. None of the content may be distributed or copied directly without prior approval.

© 2021 Hadley Industries Holdings Limited

Board Thickness	Fixing Length
≤15mm	25mm
12.5mm + 12.5mm	25mm + 38mm
12.5mm + 15mm	25mm + 38mm
15mm + 15mm	25mm + 42mm



00	JUL21	First Issue	FM	JS	JS	System details to be read in conjunction with Hadley Group project specification pack. All applications to be built in accordance with British Standards, Building Regulations and Hadley Group tested solutions.
Rev:	Date:	Reason for Issue:	Drn:	Chk:	App:	

Project:  
**Typical System Detail**  
 See project specification for exact requirements

Title:  
**Hadley Shaftwall**  
 Double Layer Partition  
 Splayed Corner External

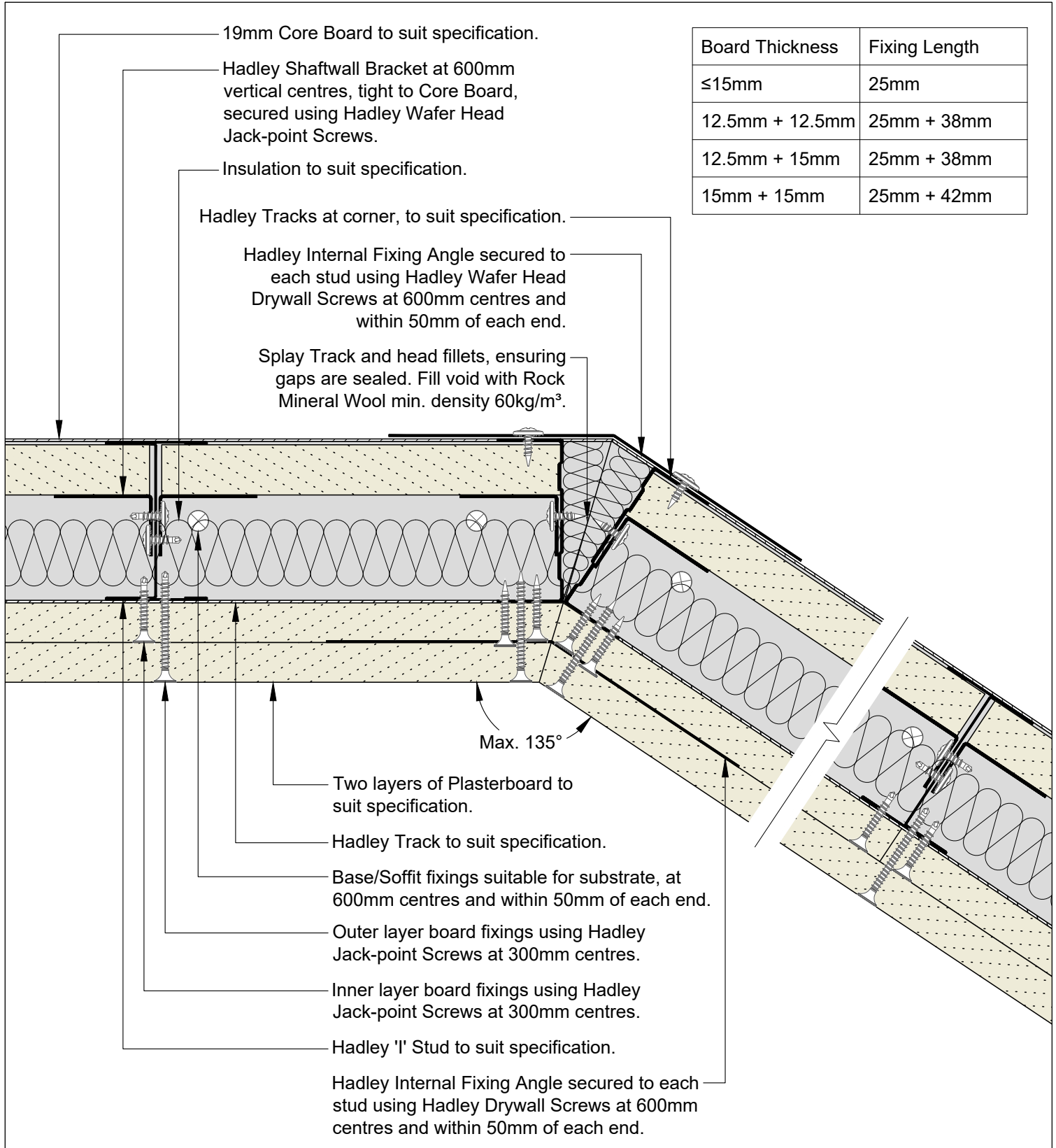


Hadley Group, Downing Street,  
 Smethwick, West Midlands B66 2PA  
 Tel: +44 (0) 121 555 1329  
 E-mail: hct@hadleygroup.co.uk

Scale: 1:2 @ A4	Date: Jul 21	Drawn: FM	Checked: JS	Dwg No: <b>DRY-HAD-XX-ZZ-DT-X-0810</b>	Revision: <b>00</b>
--------------------	-----------------	--------------	----------------	---	------------------------

All performance data and system specifications are for systems constructed with materials & components as shown. The inclusion or substitution of any other manufacturers materials or components could invalidate test data and system performance. The information is provided in good faith and is based upon details received which are assumed to include all relevant facts. No duty of care is owed to the recipient or any other third party and Hadley Industries PLC cannot accept liability in respect of the details shown. None of the content may be distributed or copied directly without prior approval.

© 2021 Hadley Industries Holdings Limited



00	JUL21	First Issue	FM	JS	JS	System details to be read in conjunction with Hadley Group project specification pack. All applications to be built in accordance with British Standards, Building Regulations and Hadley Group tested solutions.
Rev:	Date:	Reason for Issue:	Drn:	Chk:	App:	

Project:  
**Typical System Detail**  
 See project specification for exact requirements

Title:  
**Hadley Shaftwall**  
 Double Layer Partition  
 Splayed Corner Internal

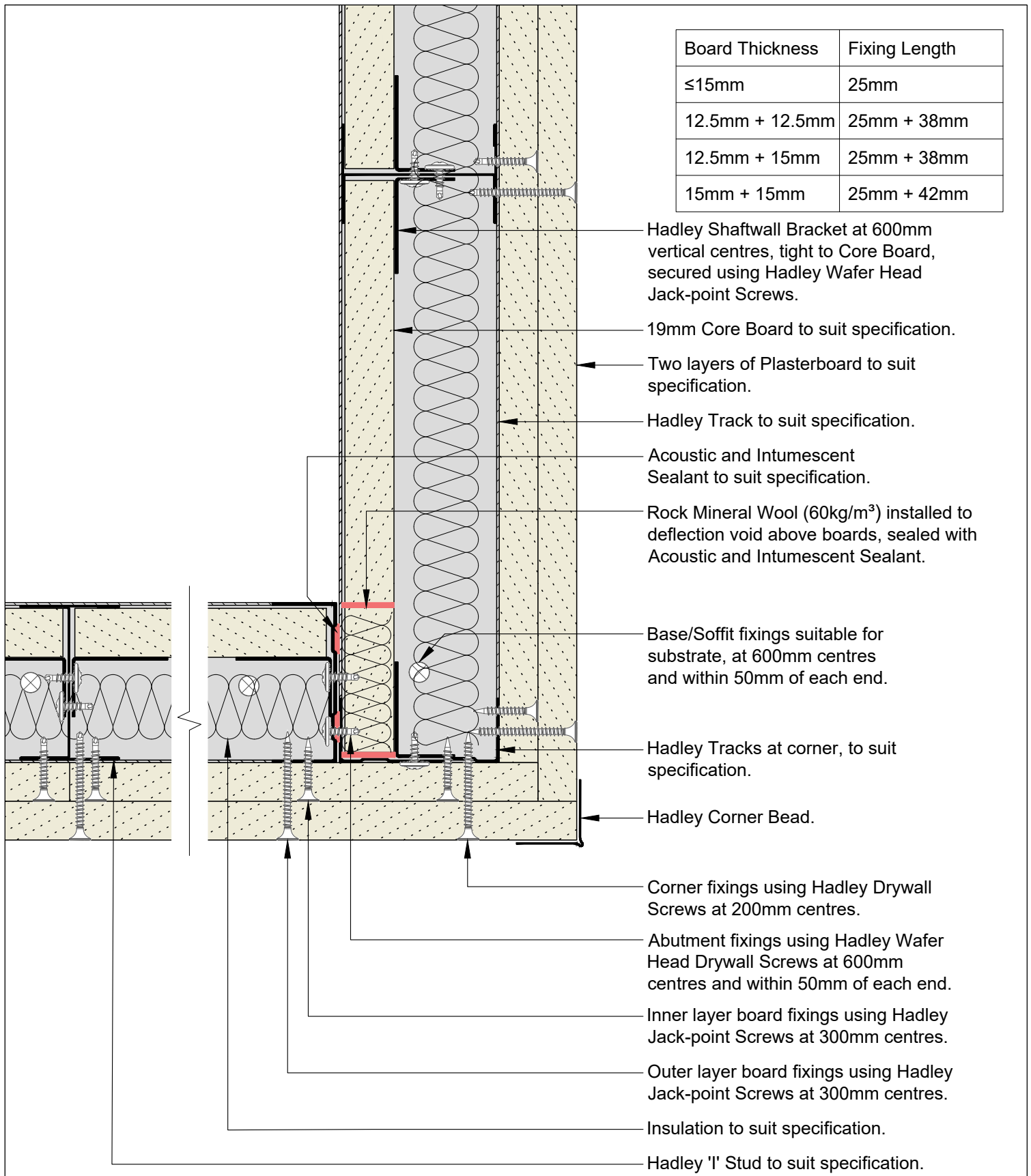


Hadley Group, Downing Street,  
 Smethwick, West Midlands B66 2PA  
 Tel: +44 (0) 121 555 1329  
 E-mail: hct@hadleygroup.co.uk

Scale: 1:2 @ A4	Date: Jul 21	Drawn: FM	Checked: JS	Dwg No: <b>DRY-HAD-XX-ZZ-DT-X-0811</b>	Revision: <b>00</b>
--------------------	-----------------	--------------	----------------	---	------------------------

All performance data and system specifications are for systems constructed with materials & components as shown. The inclusion or substitution of any other manufacturers materials or components could invalidate test data and system performance. The information is provided in good faith and is based upon details received which are assumed to include all relevant facts. No duty of care is owed to the recipient or any other third party and Hadley Industries PLC cannot accept liability in respect of the details shown. None of the content may be distributed or copied directly without prior approval.  
 © 2021 Hadley Industries Holdings Limited

Board Thickness	Fixing Length
≤15mm	25mm
12.5mm + 12.5mm	25mm + 38mm
12.5mm + 15mm	25mm + 38mm
15mm + 15mm	25mm + 42mm



- Hadley Shaftwall Bracket at 600mm vertical centres, tight to Core Board, secured using Hadley Wafer Head Jack-point Screws.
- 19mm Core Board to suit specification.
- Two layers of Plasterboard to suit specification.
- Hadley Track to suit specification.
- Acoustic and Intumescent Sealant to suit specification.
- Rock Mineral Wool (60kg/m<sup>3</sup>) installed to deflection void above boards, sealed with Acoustic and Intumescent Sealant.
- Base/Soffit fixings suitable for substrate, at 600mm centres and within 50mm of each end.
- Hadley Tracks at corner, to suit specification.
- Hadley Corner Bead.
- Corner fixings using Hadley Drywall Screws at 200mm centres.
- Abutment fixings using Hadley Wafer Head Drywall Screws at 600mm centres and within 50mm of each end.
- Inner layer board fixings using Hadley Jack-point Screws at 300mm centres.
- Outer layer board fixings using Hadley Jack-point Screws at 300mm centres.
- Insulation to suit specification.
- Hadley 'I' Stud to suit specification.

00	JUL21	First Issue	FM	JS	JS	System details to be read in conjunction with Hadley Group project specification pack. All applications to be built in accordance with British Standards, Building Regulations and Hadley Group tested solutions.
Rev:	Date:	Reason for Issue:	Drn:	Chk:	App:	

Project:  
**Typical System Detail**  
 See project specification for exact requirements

Title:  
**Hadley Shaftwall**  
 Double Layer Partition  
 90° Corner External

Scale: 1:2 @ A4	Date: Jul 21	Drawn: FM	Checked: JS	Dwg No: <b>DRY-HAD-XX-ZZ-DT-X-0812</b>	Revision: <b>00</b>
--------------------	-----------------	--------------	----------------	---	------------------------

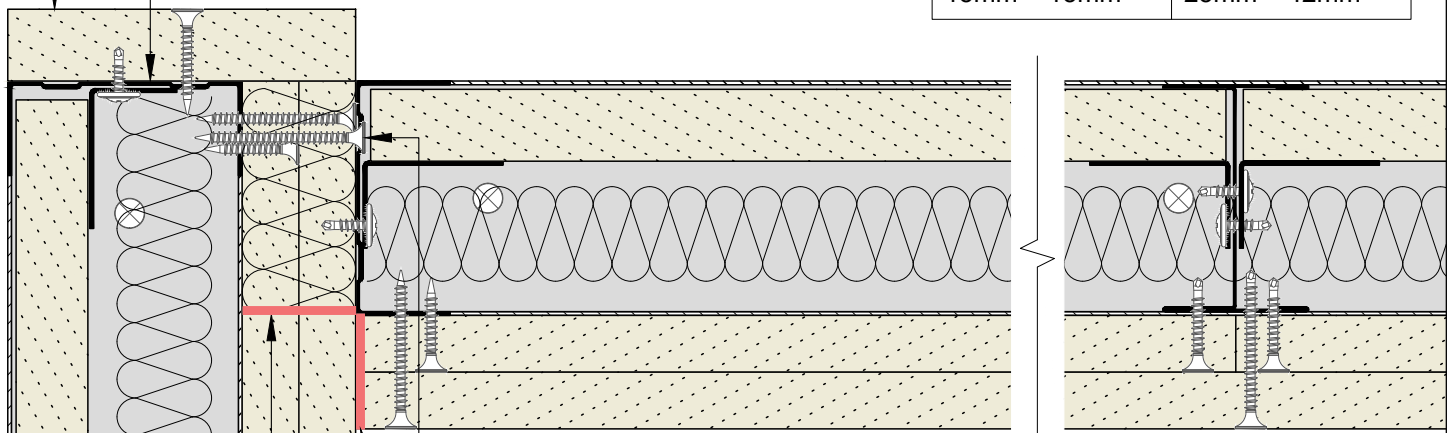


Hadley Group, Downing Street,  
 Smethwick, West Midlands B66 2PA  
 Tel: +44 (0) 121 555 1329  
 E-mail: hct@hadleygroup.co.uk

19mm Core Board to suit specification, prefixed to track using Hadley Drywall Screws at 300mm centres and within 50mm of each end. Full height, allowing for deflection from the soffit.

Hadley Tracks at corner, to suit specification.

Board Thickness	Fixing Length
≤15mm	25mm
12.5mm + 12.5mm	25mm + 38mm
12.5mm + 15mm	25mm + 38mm
15mm + 15mm	25mm + 42mm



Abutment fixings using Hadley Drywall Screws at 600mm centres and within 50mm of each end.

Acoustic and Intumescent Sealant to suit specification.

Rock Mineral Wool (60kg/m<sup>3</sup>) installed to deflection void above boards, sealed with Acoustic and Intumescent Sealant.

Base/Soffit fixings suitable for substrate, at 600mm centres and within 50mm of each end.

Hadley Shaftwall Bracket at 600mm vertical centres, tight to Core Board, secured using Hadley Wafer Head Jack-point Screws.

Hadley 'I' Stud to suit specification.

Inner layer board fixings using Hadley Jack-point Screws at 300mm centres.

Outer layer board fixings using Hadley Jack-point Screws at 300mm centres.

Insulation to suit specification.

Two layers of Plasterboard to suit specification.

Hadley Track to suit specification.

19mm Core Board to suit specification.

00	JUL21	First Issue	FM	JS	JS	System details to be read in conjunction with Hadley Group project specification pack. All applications to be built in accordance with British Standards, Building Regulations and Hadley Group tested solutions.
Rev:	Date:	Reason for Issue:	Drn:	Chk:	App:	

Project:

Typical System Detail  
See project specification for exact requirements

Title:  
**Hadley Shaftwall**  
Double Layer Partition  
90° Corner Internal



Hadley Group, Downing Street,  
Smethwick, West Midlands B66 2PA  
Tel: +44 (0) 121 555 1329  
E-mail: hct@hadleygroup.co.uk

Scale:	Date:	Drawn:	Checked:	Dwg No:	Revision:
1:2 @ A4	Jul 21	FM	JS	<b>DRY-HAD-XX-ZZ-DT-X-0813</b>	<b>00</b>

All performance data and system specifications are for systems constructed with materials & components as shown. The inclusion or substitution of any other manufacturers materials or components could invalidate test data and system performance. The information is provided in good faith and is based upon details received which are assumed to include all relevant facts. No duty of care is owed to the recipient or any other third party and Hadley Industries PLC cannot accept liability in respect of the details shown. None of the content may be distributed or copied directly without prior approval.

Stud and track depths and gauge to suit specification.  
Fixing type to suit metalwork gauge.

Core Board fillet to suit specification, to web of stud.

Vertical track full height above lintel, allowing for deflection. Fixed using Hadley Wafer Head Screws at 600mm centres and within 50mm of each end.

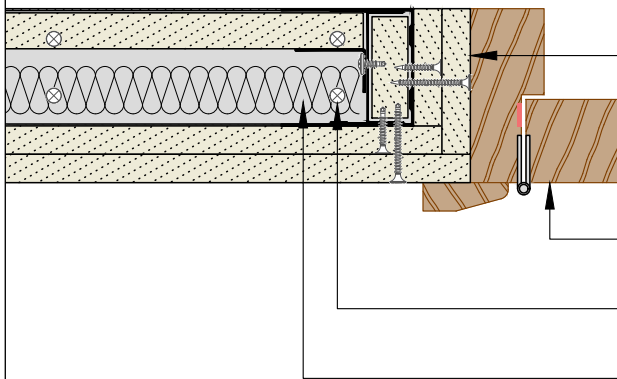
Horizontal Hadley min. 50mm Flange Track forming lintel, fixed to vertical Hadley Track using 2no Hadley Wafer Head Screws per side.

Hadley 50mm min. Flange Track cloaking stud full height, allowing for deflection.

Core Board fillet to suit specification, between vertical studs..

Hadley Standard Track cut and bent to extend vertically 300mm, fixed through both flanges using 3No Hadley Wafer Head Drywall Screws each side.

**Plan View**



Apply plasterboard as per face board specification to the reveals.

Indicative door frame and architraves by others.

Base track fixed with pairs of suitable fixings 150mm apart.

Timber fillets, omitted for clarity, within door jamb to suit door manufacturers application requirements and tested solution.

300mm

00	JUL21	First Issue	FM	JS	JS	System details to be read in conjunction with Hadley Group project specification pack. All applications to be built in accordance with British Standards, Building Regulations and Hadley Group tested solutions.
Rev:	Date:	Reason for Issue:	Drn:	Chk:	App:	

Project:  
Typical System Detail  
See project specification for exact requirements

Title:  
**Hadley Shaftwall**  
Double Layer Partition  
Access Door



Hadley Group, Downing Street,  
Smethwick, West Midlands B66 2PA  
Tel: +44 (0) 121 555 1329  
E-mail: hct@hadleygroup.co.uk

Scale: NTS	Date: Jul 21	Drawn: FM	Checked: JS	Dwg No: <b>DRY-HAD-XX-ZZ-DT-X-0814</b>	Revision: <b>00</b>
---------------	-----------------	--------------	----------------	---	------------------------

All performance data and system specifications are for systems constructed with materials & components as shown. The inclusion or substitution of any other manufacturers materials or components could invalidate test data and system performance. The information is provided in good faith and is based upon details received which are assumed to include all relevant facts. No duty of care is owed to the recipient or any other third party and Hadley Industries PLC cannot accept liability in respect of the details shown. None of the content may be distributed or copied directly without prior approval.