

Hadley DRYLINING

Standard Details

Hadley BRACE – Drawings



Board Thickness	Fixing Length
≤15mm	25mm
12.5mm + 12.5mm	25mm + 38mm
12.5mm + 15mm	25mm + 38mm
15mm + 15mm	25mm + 42mm

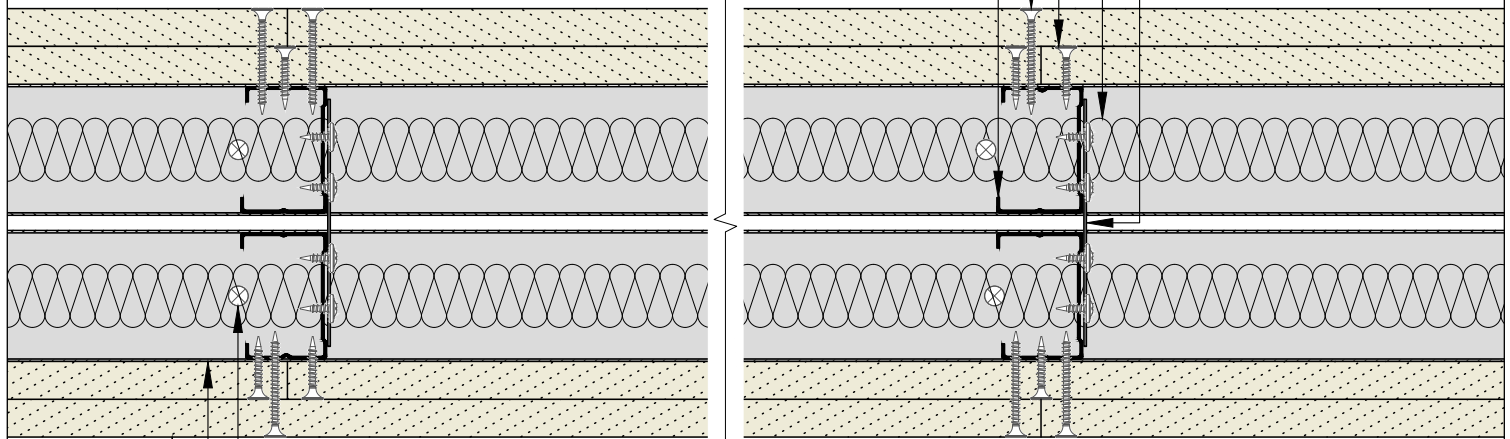
Hadley Brace at 1200mm vertical centres fixed to each stud using 2Nº Hadley Wafer Head Drywall Screws to each stud.

Insulation to suit specification.

Inner layer board fixings using Hadley Drywall Screws at 300mm centres.

Outer layer board fixings using Hadley Drywall Screws at 300mm centres.

2 rows of Hadley 'C' Stud to suit specification.



Base/Soffit fixings suitable for substrate, at 600mm centres and within 50mm of each end.

Hadley Track to suit specification.

Two layers of plasterboard to suit specification.

00	JUL21	First Issue	FM	JS	JS	System details to be read in conjunction with Hadley Group project specification pack. All applications to be built in accordance with British Standards, Building Regulations and Hadley Group tested solutions.
Rev:	Date:	Reason for Issue:	Drn:	Chk:	App:	

Project:

Typical System Detail
See project specification for exact requirements

Title:

Hadley Brace
Partition - Twin Frame Braced
Plan



Hadley Group, Downing Street,
Smethwick, West Midlands B66 2PA

Tel: +44 (0) 121 555 1329

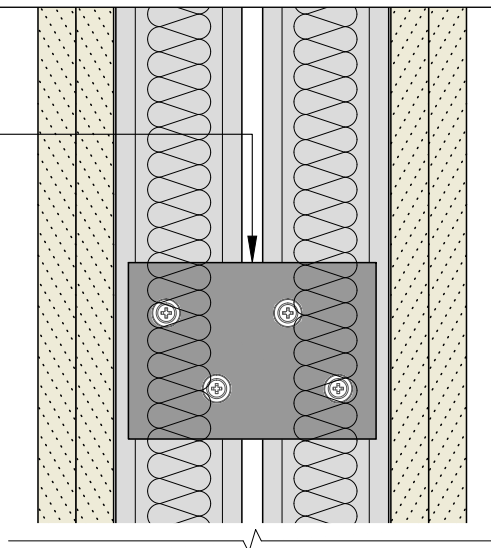
E-mail: hct@hadleygroup.co.uk

Scale:	Date:	Drawn:	Checked:	Dwg No:	Revision:
1:3 @ A4	Jul 21	FM	JS	DRY-HAD-XX-ZZ-DT-X-0601	00

All performance data and system specifications are for systems constructed with materials & components as shown. The inclusion or substitution of any other manufacturers materials or components could invalidate test data and system performance. The information is provided in good faith and is based upon details received which are assumed to include all relevant facts. No duty of care is owed to the recipient or any other third party and Hadley Industries PLC cannot accept liability in respect of the details shown. None of the content may be distributed or copied directly without prior approval.

Hadley Brace at 1200mm vertical centres fixed to each stud using 2No Hadley Wafer Head Drywall Screws to each stud.

Board Thickness	Fixing Length
≤15mm	25mm
12.5mm + 12.5mm	25mm + 38mm
12.5mm + 15mm	25mm + 38mm
15mm + 15mm	25mm + 42mm

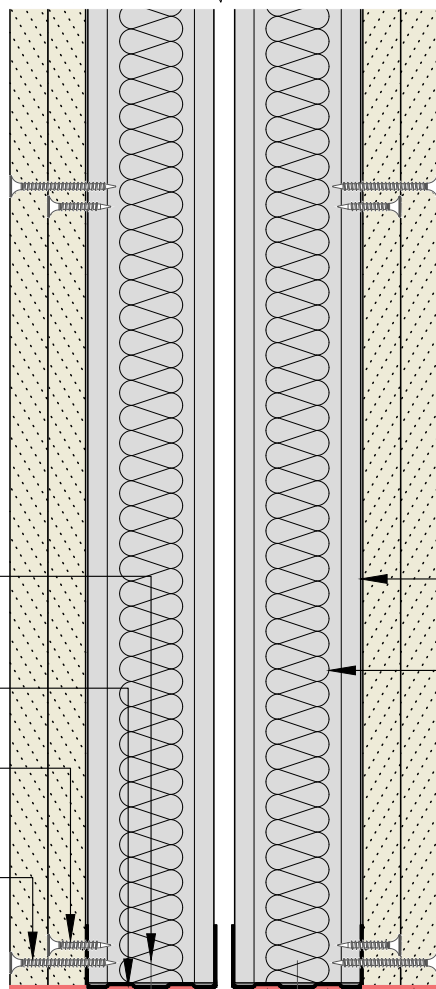


Base fixings suitable for substrate, at 600mm centres and within 50mm of each end.

Hadley Track to suit specification.

Inner layer board fixings using Hadley Drywall Screws at 300mm centres.

Outer layer board fixings using Hadley Drywall Screws at 300mm centres.



2 rows of Hadley 'C' Stud to suit specification.

Insulation to suit specification.

Two layers of plasterboard to suit specification.

Acoustic and intumescent sealant to suit specification.

00	JUL21	First Issue	FM	JS	JS	System details to be read in conjunction with Hadley Group project specification pack. All applications to be built in accordance with British Standards, Building Regulations and Hadley Group tested solutions.
Rev:	Date:	Reason for Issue:	Drn:	Chk:	App:	

Project:

Typical System Detail
See project specification for exact requirements

Title:

Hadley Brace
Partition - Twin Frame Braced
Base

Scale:	Date:	Drawn:	Checked:	Dwg No:	Revision:
1:3 @ A4	Jul 21	FM	JS	DRY-HAD-XX-ZZ-DT-X-0602	00



Hadley Group, Downing Street,
Smethwick, West Midlands B66 2PA

Tel: +44 (0) 121 555 1329

E-mail: hct@hadleygroup.co.uk

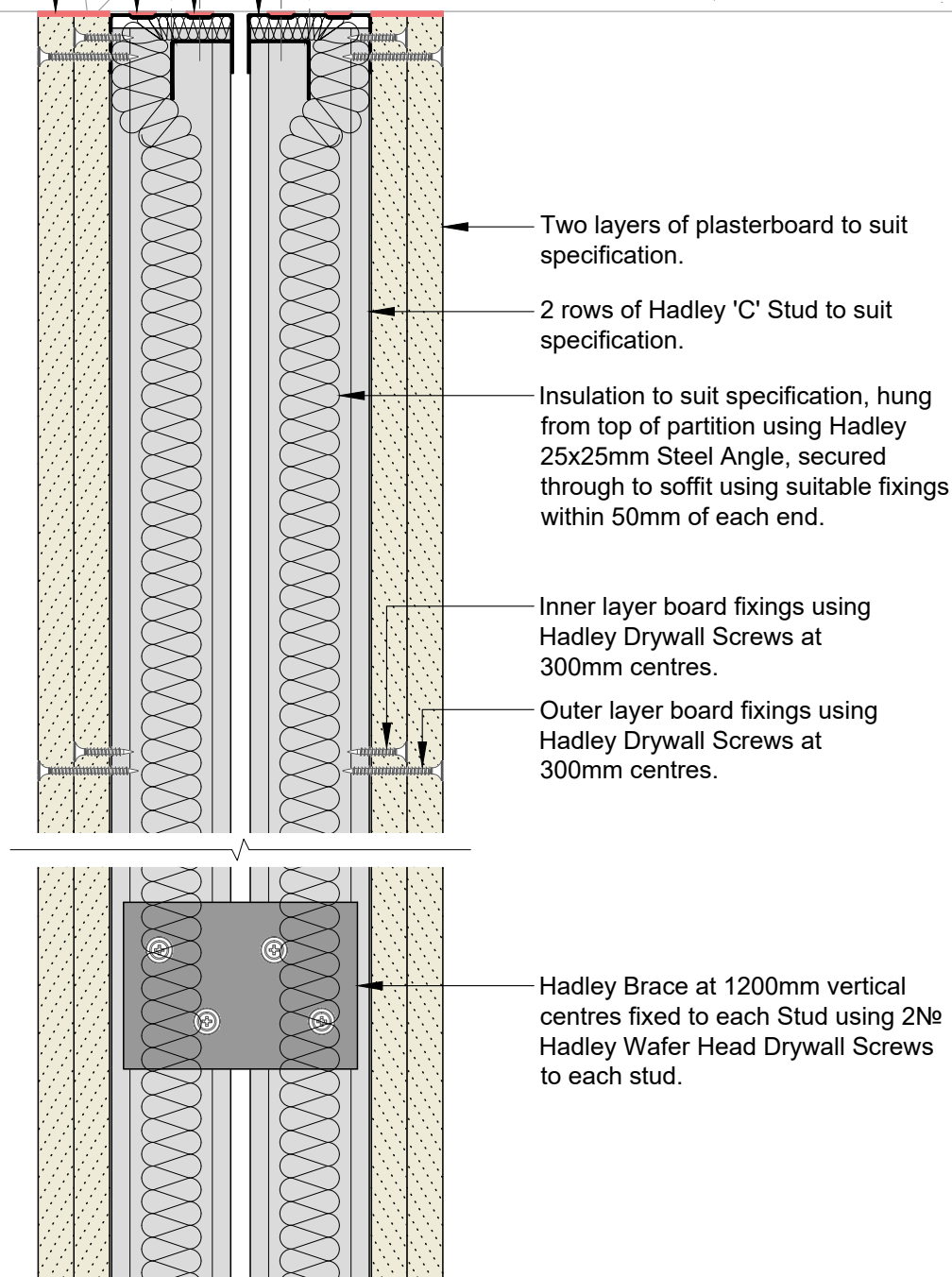
All performance data and system specifications are for systems constructed with materials & components as shown. The inclusion or substitution of any other manufacturers materials or components could invalidate test data and system performance. The information is provided in good faith and is based upon details received which are assumed to include all relevant facts. No duty of care is owed to the recipient or any other third party and Hadley Industries PLC cannot accept liability in respect of the details shown. None of the content may be distributed or copied directly without prior approval.

Soffit fixings suitable for substrate, at 600mm centres and within 50mm of each end.

Hadley Track to suit specification.

Acoustic and intumescent sealant to suit specification.

Board Thickness	Fixing Length
≤15mm	25mm
12.5mm + 12.5mm	25mm + 38mm
12.5mm + 15mm	25mm + 38mm
15mm + 15mm	25mm + 42mm



00 JUL21 First Issue FM JS JS System details to be read in conjunction with Hadley Group project specification pack. All applications to be built in accordance with British Standards, Building Regulations and Hadley Group tested solutions.

Rev: Date: Reason for Issue: Drn: Chk: App: Project:



Hadley Group, Downing Street,
Smethwick, West Midlands B66 2PA

Tel: +44 (0) 121 555 1329

E-mail: hct@hadleygroup.co.uk

Typical System Detail
See project specification for exact requirements

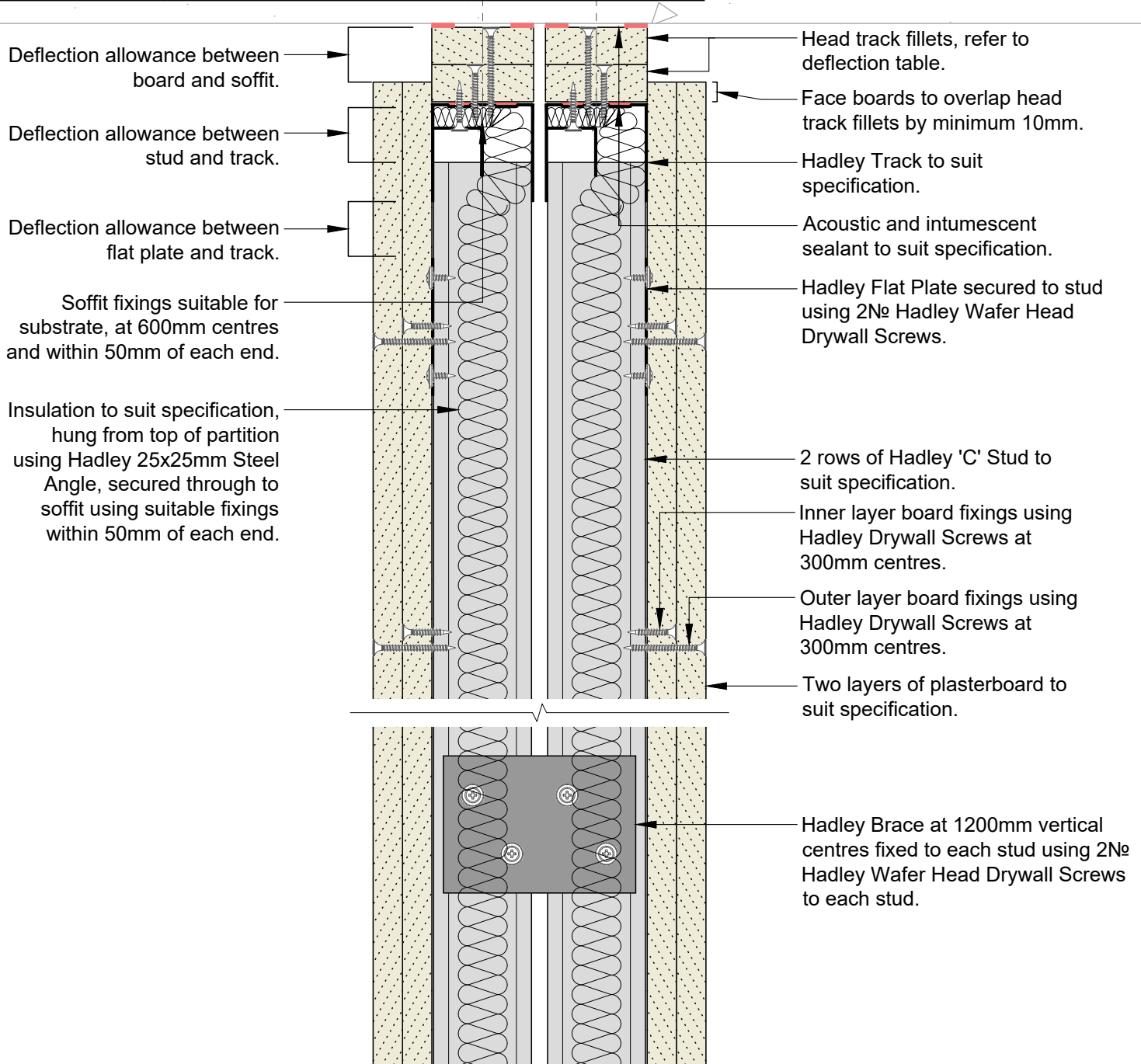
Title:
Hadley Brace
Partition - Twin Frame Braced
Fixed Head

Scale: 1:3 @ A4 Date: Jul 21 Drawn: FM Checked: JS Dwg No: DRY-HAD-XX-ZZ-DT-X-0603 Revision: 00

All performance data and system specifications are for systems constructed with materials & components as shown. The inclusion or substitution of any other manufacturers materials or components could invalidate test data and system performance. The information is provided in good faith and is based upon details received which are assumed to include all relevant facts. No duty of care is owed to the recipient or any other third party and Hadley Industries PLC cannot accept liability in respect of the details shown. None of the content may be distributed or copied directly without prior approval.

Min. Deflection to suit structural engineer design	Min. Head Track Fillet(s)	Hadley Track Flange
5mm	1x15mm Type F Plasterboard	50mm
9mm	1x19mm CoreBoard	50mm
15mm	2x12.5mm Type F Plasterboard	50mm
20mm	2x15mm Type F Plasterboard	50mm
28mm	2x19mm CoreBoard	50mm
35mm	3x15mm Type F Plasterboard	70mm

Board Thickness	Fixing Length
≤15mm	25mm
12.5mm + 12.5mm	25mm + 38mm
12.5mm + 15mm	25mm + 38mm
15mm + 15mm	25mm + 42mm



00	JUL21	First Issue	FM	JS	JS	System details to be read in conjunction with Hadley Group project specification pack. All applications to be built in accordance with British Standards, Building Regulations and Hadley Group tested solutions.
Rev:	Date:	Reason for Issue:	Drn:	Chk:	App:	

Project:

Typical System Detail
See project specification for exact requirements

Title:

Hadley Brace
Partition - Twin Frame Braced
Deflection Head up to 60 min EI Fire Resistance

Scale:	Date:	Drawn:	Checked:	Dwg No:	Revision:
1:3 @ A4	Jul 21	FM	JS	DRY-HAD-XX-ZZ-DT-X-0604	00



Hadley Group, Downing Street,
Smethwick, West Midlands B66 2PA

Tel: +44 (0) 121 555 1329

E-mail: hct@hadleygroup.co.uk

All performance data and system specifications are for systems constructed with materials & components as shown. The inclusion or substitution of any other manufacturers materials or components could invalidate test data and system performance. The information is provided in good faith and is based upon details received which are assumed to include all relevant facts. No duty of care is owed to the recipient or any other third party and Hadley Industries PLC cannot accept liability in respect of the details shown. None of the content may be distributed or copied directly without prior approval.

Min. Deflection to suit structural engineer design	Min. Head Track Fillet(s)	Hadley Track Flange	Min. Hadley Angle
5mm	1x15mm Type F Plasterboard	50mm	19x19mm
9mm	1x19mm CoreBoard	50mm	19x19mm
15mm	2x12.5mm Type F Plasterboard	50mm	25x25mm
20mm	2x15mm Type F Plasterboard	50mm	25x50mm
28mm	2x19mm CoreBoard	50mm	25x50mm
35mm	3x15mm Type F Plasterboard	70mm	25x50mm

Board Thickness	Fixing Length
≤15mm	25mm
12.5mm + 12.5mm	25mm + 38mm
12.5mm + 15mm	25mm + 38mm
15mm + 15mm	25mm + 42mm

Soffit fixings suitable for substrate, at 600mm centres and within 50mm of each end.

Hadley Angle, refer to deflection table. Secured using suitable fixings at 600mm centres and within 50mm of each end.

Acoustic and intumescent sealant.

Deflection allowance between board and soffit.

Head track fillets, refer to deflection table.

Deflection allowance between stud and track.

Face boards to overlap head track fillets by minimum 10mm.

Deflection allowance between flat plate and track.

Hadley Track to suit specification.

Rock Mineral Wool (60kg/m³)

Acoustic and intumescent sealant to suit specification.

Insulation to suit specification, hung from top of partition using Hadley 25x25mm Steel Angle, secured to track using Hadley Drywall Screws within 50mm of each end.

Hadley Flat Plate secured to stud using 2N^o Hadley Wafer Head Drywall Screws.

2 rows of Hadley 'C' Stud to suit specification.

Inner layer board fixings using Hadley Drywall Screws at 300mm centres.

Outer layer board fixings using Hadley Drywall Screws at 300mm centres.

Two layers of plasterboard to suit specification.

Hadley Brace at 1200mm vertical centres fixed to each stud using 2N^o Hadley Wafer Head Drywall Screws to each stud.

00 JUL21 First Issue FM JS JS System details to be read in conjunction with Hadley Group project specification pack. All applications to be built in accordance with British Standards, Building Regulations and Hadley Group tested solutions.

Rev: Date: Reason for Issue: Dm: Chk: App: Project:



Hadley Group, Downing Street,
Smethwick, West Midlands B66 2PA

Tel: +44 (0) 121 555 1329

E-mail: hct@hadleygroup.co.uk

Typical System Detail

See project specification for exact requirements

Title:

Hadley Brace

Partition - Twin Frame Braced

Deflection Head up to 120 min EI Fire Resistance

Scale:

1:3 @ A4

Date:

Jul 21

Drawn:

FM

Checked:

JS

Dwg No:

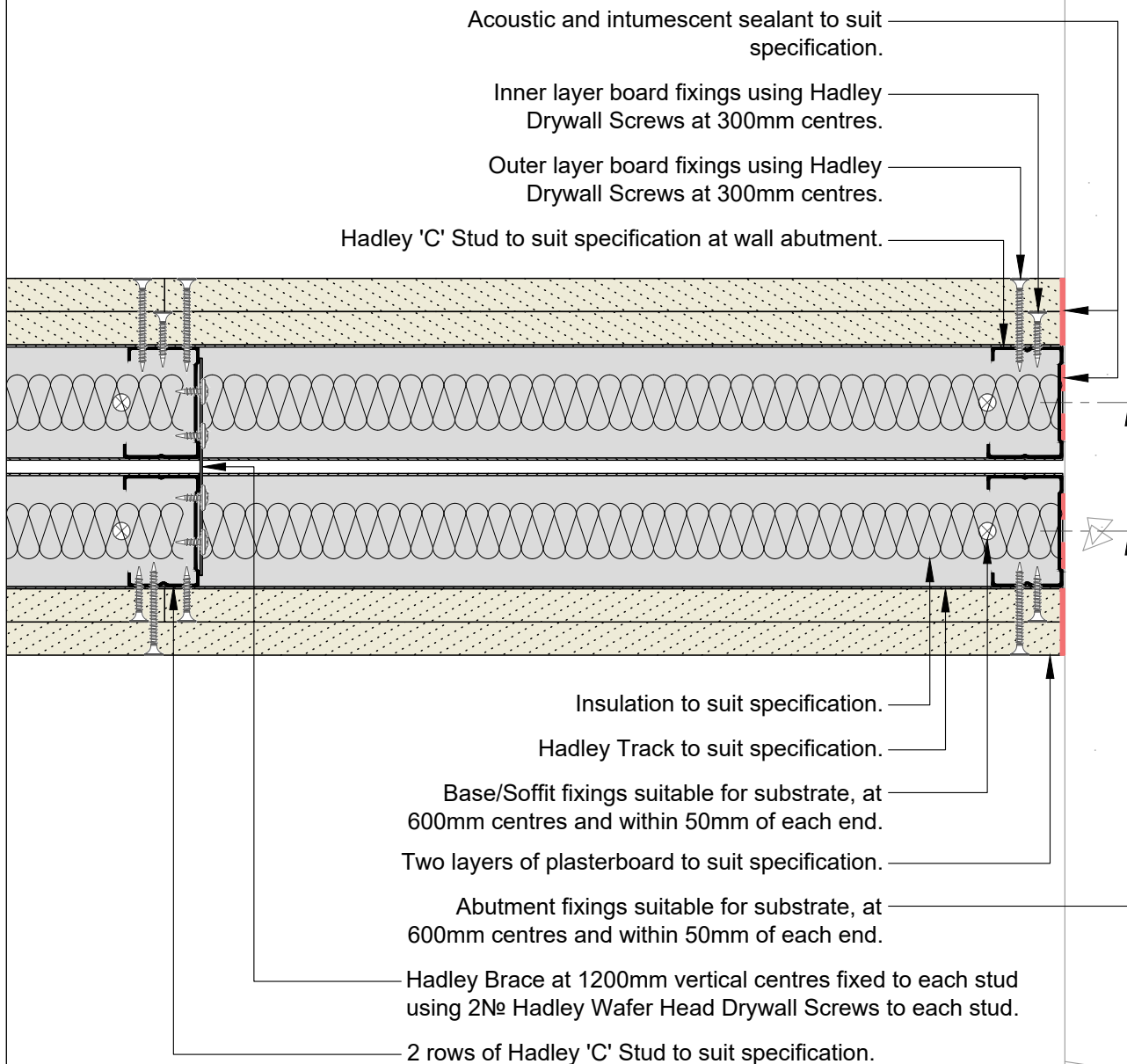
DRY-HAD-XX-ZZ-DT-X-0605

Revision:

00

All performance data and system specifications are for systems constructed with materials & components as shown. The inclusion or substitution of any other manufacturers materials or components could invalidate test data and system performance. The information is provided in good faith and is based upon details received which are assumed to include all relevant facts. No duty of care is owed to the recipient or any other third party and Hadley Industries PLC cannot accept liability in respect of the details shown. None of the content may be distributed or copied directly without prior approval.

Board Thickness	Fixing Length
≤15mm	25mm
12.5mm + 12.5mm	25mm + 38mm
12.5mm + 15mm	25mm + 38mm
15mm + 15mm	25mm + 42mm



00	JUL21	First Issue	FM	JS	JS	System details to be read in conjunction with Hadley Group project specification pack. All applications to be built in accordance with British Standards, Building Regulations and Hadley Group tested solutions.
Rev:	Date:	Reason for Issue:	Drn:	Chk:	App:	



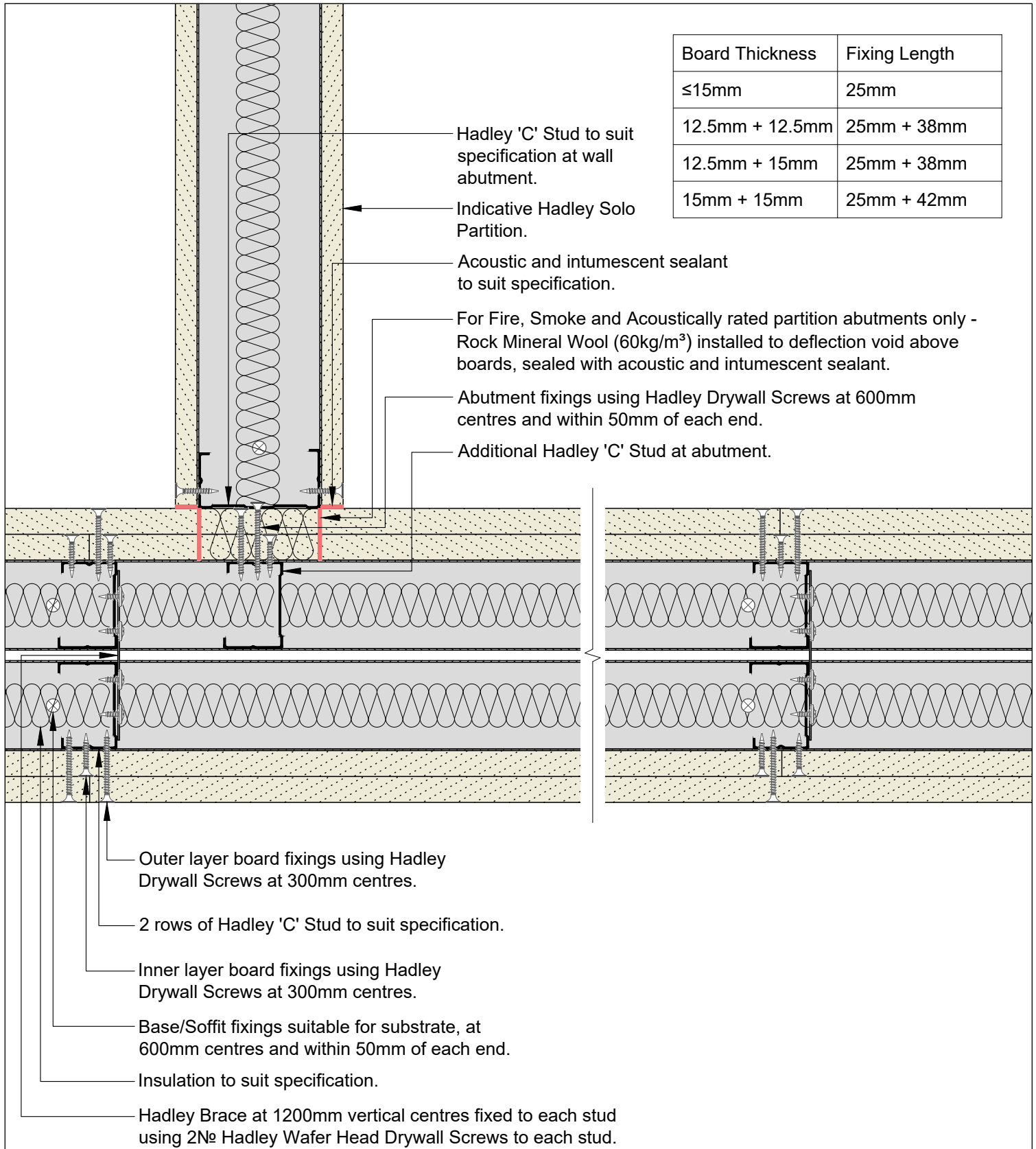
Hadley Group, Downing Street,
Smethwick, West Midlands B66 2PA

Tel: +44 (0) 121 555 1329

E-mail: hct@hadleygroup.co.uk

Project: Typical System Detail See project specification for exact requirements					
Title: Hadley Brace Partition - Twin Frame Braced Abutment to Concrete/Blockwork					
Scale: 1:3 @ A4	Date: Jul 21	Drawn: FM	Checked: JS	Dwg No: DRY-HAD-XX-ZZ-DT-X-0606	Revision: 00

All performance data and system specifications are for systems constructed with materials & components as shown. The inclusion or substitution of any other manufacturers materials or components could invalidate test data and system performance. The information is provided in good faith and is based upon details received which are assumed to include all relevant facts. No duty of care is owed to the recipient or any other third party and Hadley Industries PLC cannot accept liability in respect of the details shown. None of the content may be distributed or copied directly without prior approval.



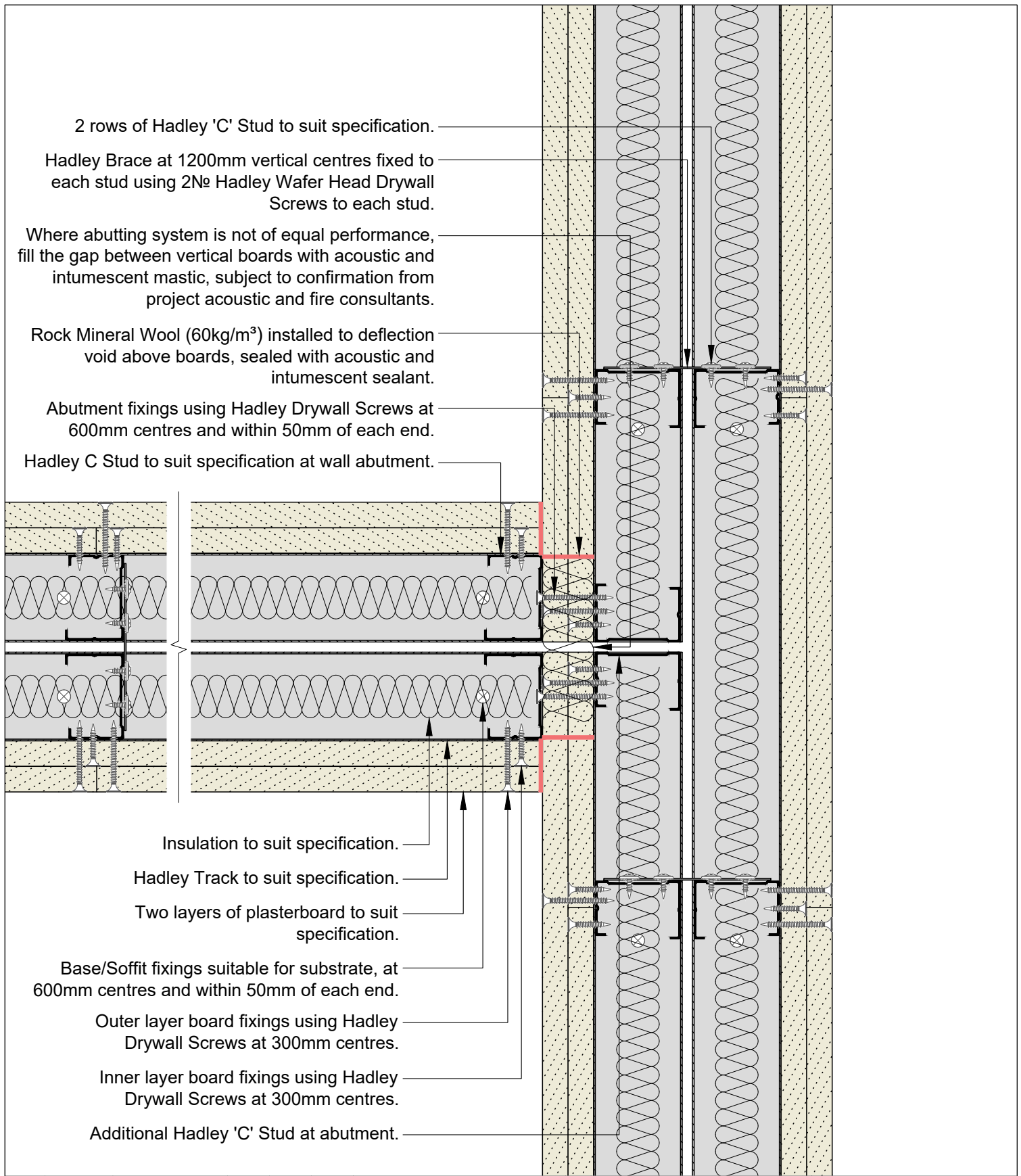
00	JUL21	First Issue	FM	JS	JS	System details to be read in conjunction with Hadley Group project specification pack. All applications to be built in accordance with British Standards, Building Regulations and Hadley Group tested solutions.
Rev:	Date:	Reason for Issue:	Drn:	Chk:	App:	

Project: Typical System Detail See project specification for exact requirements					
Title: Hadley Brace Partition - Twin Frame Braced Abutment to Drylining Partition					
Scale: 1:3 @ A4	Date: Jul 21	Drawn: FM	Checked: JS	Dwg No: DRY-HAD-XX-ZZ-DT-X-0607	Revision: 00



Hadley Group, Downing Street,
Smethwick, West Midlands B66 2PA
Tel: +44 (0) 121 555 1329
E-mail: hct@hadleygroup.co.uk

All performance data and system specifications are for systems constructed with materials & components as shown. The inclusion or substitution of any other manufacturers materials or components could invalidate test data and system performance. The information is provided in good faith and is based upon details received which are assumed to include all relevant facts. No duty of care is owed to the recipient or any other third party and Hadley Industries PLC cannot accept liability in respect of the details shown. None of the content may be distributed or copied directly without prior approval.



00	JUL21	First Issue	FM	JS	JS	System details to be read in conjunction with Hadley Group project specification pack. All applications to be built in accordance with British Standards, Building Regulations and Hadley Group tested solutions.
Rev:	Date:	Reason for Issue:	Drn:	Chk:	App:	

Project:

Typical System Detail
See project specification for exact requirements

Title:

Hadley Brace
Partition - Twin Frame Braced
Abutment to Drylining Twin Frame

Scale:	Date:	Drawn:	Checked:	Dwg No:	Revision:
1:3 @ A4	Jul 21	FM	JS	DRY-HAD-XX-ZZ-DT-X-0608	00



Hadley Group, Downing Street,
Smethwick, West Midlands B66 2PA
Tel: +44 (0) 121 555 1329
E-mail: hct@hadleygroup.co.uk

Board Thickness	Fixing Length
≤15mm	25mm
12.5mm + 12.5mm	25mm + 38mm
12.5mm + 15mm	25mm + 38mm
15mm + 15mm	25mm + 42mm

Insulation to suit specification.

Hadley Internal Fixing Angle secured to each stud using Hadley Drywall Screws at 600mm centres and within 50mm of each stud end.

Two layers of plasterboard to suit specification.

Splay tracks to ensure that any head fillets are splayed and sealed, ensuring no gaps.

Inner layer board fixings using Hadley Drywall Screws at 300mm centres.

Outer layer board fixings using Hadley Drywall Screws at 300mm centres.

Min. 135°

2 rows of Hadley 'C' Stud to suit specification.

Hadley Track to suit specification.

Hadley Brace at 1200mm vertical centres fixed to each stud using 2Nø Hadley Wafer Head Drywall Screws to each stud.

Base/Soffit fixings suitable for substrate, at 600mm centres and within 50mm of each end.

Corner board fixings using Hadley Drywall Screws at 200mm centres.

00	JUL21	First Issue	FM	JS	JS	System details to be read in conjunction with Hadley Group project specification pack. All applications to be built in accordance with British Standards, Building Regulations and Hadley Group tested solutions.
Rev:	Date:	Reason for Issue:	Drn:	Chk:	App:	

Project:

Typical System Detail
See project specification for exact requirements

Title:

Hadley Brace
Partition - Twin Frame Braced
Splayed Corner

Scale:	Date:	Drawn:	Checked:	Dwg No:	Revision:
1:3 @ A4	Jul 21	FM	JS	DRY-HAD-XX-ZZ-DT-X-0609	00



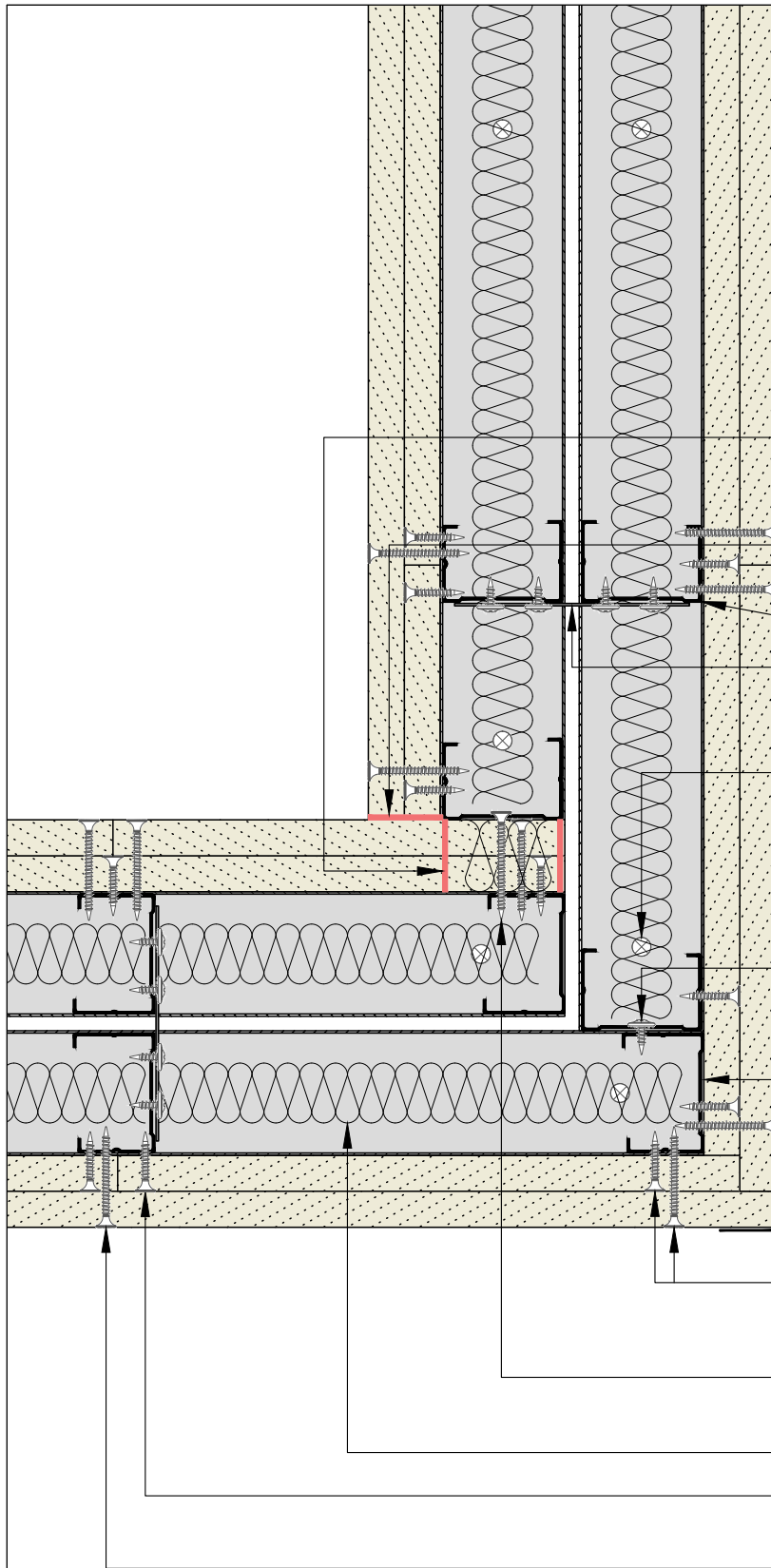
Hadley Group, Downing Street,
Smethwick, West Midlands B66 2PA

Tel: +44 (0) 121 555 1329

E-mail: hct@hadleygroup.co.uk

All performance data and system specifications are for systems constructed with materials & components as shown. The inclusion or substitution of any other manufacturers materials or components could invalidate test data and system performance. The information is provided in good faith and is based upon details received which are assumed to include all relevant facts. No duty of care is owed to the recipient or any other third party and Hadley Industries PLC cannot accept liability in respect of the details shown. None of the content may be distributed or copied directly without prior approval.

Board Thickness	Fixing Length
≤15mm	25mm
12.5mm + 12.5mm	25mm + 38mm
12.5mm + 15mm	25mm + 38mm
15mm + 15mm	25mm + 42mm



- Rock Mineral Wool (60kg/m³) installed to deflection void above boards, sealed with acoustic and intumescent sealant.
- Acoustic and intumescent sealant to suit specification.
- 2 rows of Hadley 'C' Stud to suit specification.
- Hadley Brace at 1200mm vertical centres fixed to each stud using 2N^o Hadley Wafer Head Drywall Screws to each stud.
- Base/Soffit fixings suitable for substrate, at 600mm centres and within 50mm of each end.
- Two layers of plasterboard to suit specification.
- Hadley Corner Bead.
- Abutment fixings using Hadley Wafer Head Drywall Screws at 600mm centres and within 50mm of each end.
- Hadley Track to suit specification.
- Corner board fixings using Hadley Drywall Screws at 200mm centres.
- Abutment fixings using Hadley Drywall Screws at 600mm centres and within 50mm of each end.
- Insulation to suit specification.
- Inner layer board fixings using Hadley Drywall Screws at 300mm centres.
- Outer layer board fixings using Hadley Drywall Screws at 300mm centres.

00	JUL21	First Issue	FM	JS	JS	System details to be read in conjunction with Hadley Group project specification pack. All applications to be built in accordance with British Standards, Building Regulations and Hadley Group tested solutions.
Rev:	Date:	Reason for Issue:	Drn:	Chk:	App:	

Project:

Typical System Detail
See project specification for exact requirements

Title:

Hadley Brace
Partition - Twin Frame Braced
90° Corner

Scale:	Date:	Drawn:	Checked:	Dwg No:	Revision:
1:3 @ A4	Jul 21	FM	JS	DRY-HAD-XX-ZZ-DT-X-0610	00



Hadley Group, Downing Street,
Smethwick, West Midlands B66 2PA

Tel: +44 (0) 121 555 1329

E-mail: hct@hadleygroup.co.uk

All performance data and system specifications are for systems constructed with materials & components as shown. The inclusion or substitution of any other manufacturers materials or components could invalidate test data and system performance. The information is provided in good faith and is based upon details received which are assumed to include all relevant facts. No duty of care is owed to the recipient or any other third party and Hadley Industries PLC cannot accept liability in respect of the details shown. None of the content may be distributed or copied directly without prior approval.

Stud and track depths and gauge to suit specification.
Fixing type to suit metalwork gauge.

Avoid outer board joint located on the door jamb.

Hadley Track to suit specification.
Lintel detail to suit opening width.

Hadley Track cut and bent to extend
250mm down stud, fixed through
both flanges using 2N^o Hadley Wafer
Head Drywall Screws each side.

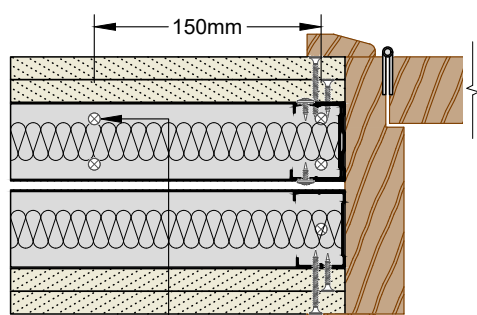
Hadley Track sleeved over stud
between returned channels at opening
head & base, fixed through both flanges
using Hadley Wafer Head Drywall
Screws at 300mm centres and within
50mm of each end for each side.

Hadley Track cut and bent to extend
vertically 300mm, fixed through both
flanges using 3N^o Hadley Wafer Head
Drywall Screws each side.

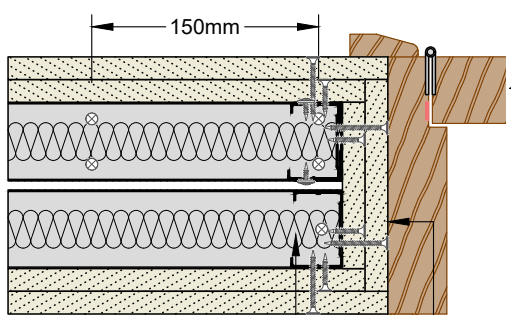
250mm

300mm

Plan View



Indicative door frame and
architraves by others.
Base track fixed with pairs of
suitable fixings 150mm apart.



For fire rated openings, apply
plasterboard as per face board
specification to the reveals.
Timber fillets, omitted for clarity, within door
jamb to suit door manufacturers application
requirements and tested solution.

00	JUL21	First Issue	FM	JS	JS	System details to be read in conjunction with Hadley Group project specification pack. All applications to be built in accordance with British Standards, Building Regulations and Hadley Group tested solutions.
Rev:	Date:	Reason for Issue:	Drn:	Chk:	App:	

Project:

Typical System Detail
See project specification for exact requirements

Title:

Hadley Brace
Partition - Twin Frame Braced
Doorway 0-60 kg

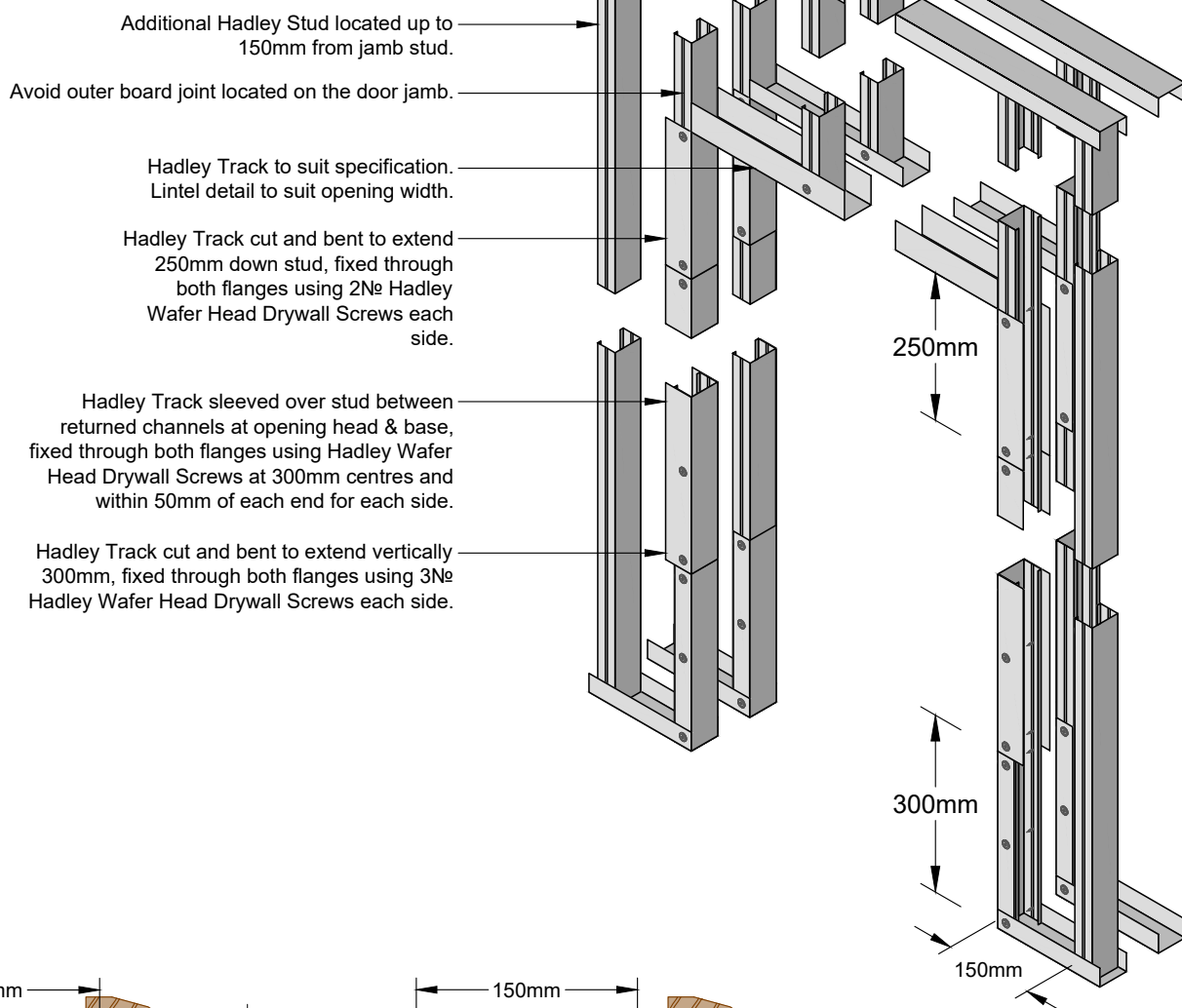
Scale:	Date:	Drawn:	Checked:	Dwg No:	Revision:
NTS	Jul 21	FM	JS	DRY-HAD-XX-ZZ-DT-X-0611	00

HADLEY
DRYLINING

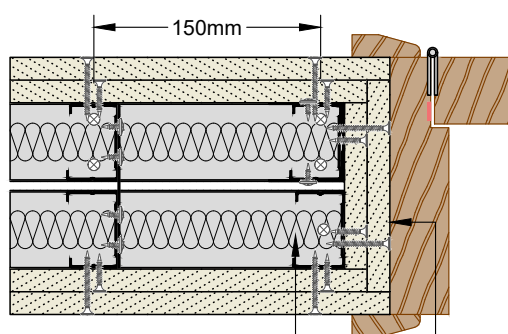
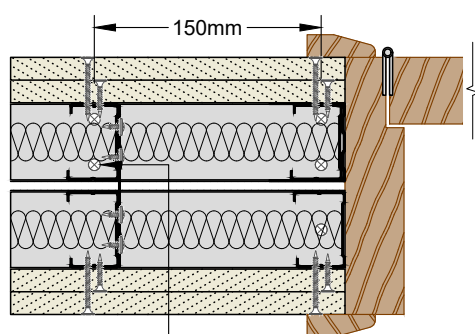
Hadley Group, Downing Street,
Smethwick, West Midlands B66 2PA
Tel: +44 (0) 121 555 1329
E-mail: hct@hadleygroup.co.uk

All performance data and system specifications are for systems constructed with materials & components as shown. The inclusion or substitution of any other manufacturers materials or components could invalidate test data and system performance. The information is provided in good faith and is based upon details received which are assumed to include all relevant facts. No duty of care is owed to the recipient or any other third party and Hadley Industries PLC cannot accept liability in respect of the details shown. None of the content may be distributed or copied directly without prior approval.

Stud and track depths and gauge to suit specification.
Fixing type to suit metalwork gauge.



Plan View



Indicative door frame and architraves by others.
Base track fixed with pairs of suitable fixings 150mm apart.

For fire rated openings, apply plasterboard as per face board specification to the reveals.
Timber fillets, omitted for clarity, within door jamb to suit door manufacturers application requirements and tested solution.

00	JUL21	First Issue	FM	JS	JS	System details to be read in conjunction with Hadley Group project specification pack. All applications to be built in accordance with British Standards, Building Regulations and Hadley Group tested solutions.
Rev:	Date:	Reason for Issue:	Drn:	Chk:	App:	

Project:

Typical System Detail
See project specification for exact requirements

Title:

Hadley Brace
Partition - Twin Frame Braced
Doorway 61-100 kg



Hadley Group, Downing Street,
Smethwick, West Midlands B66 2PA

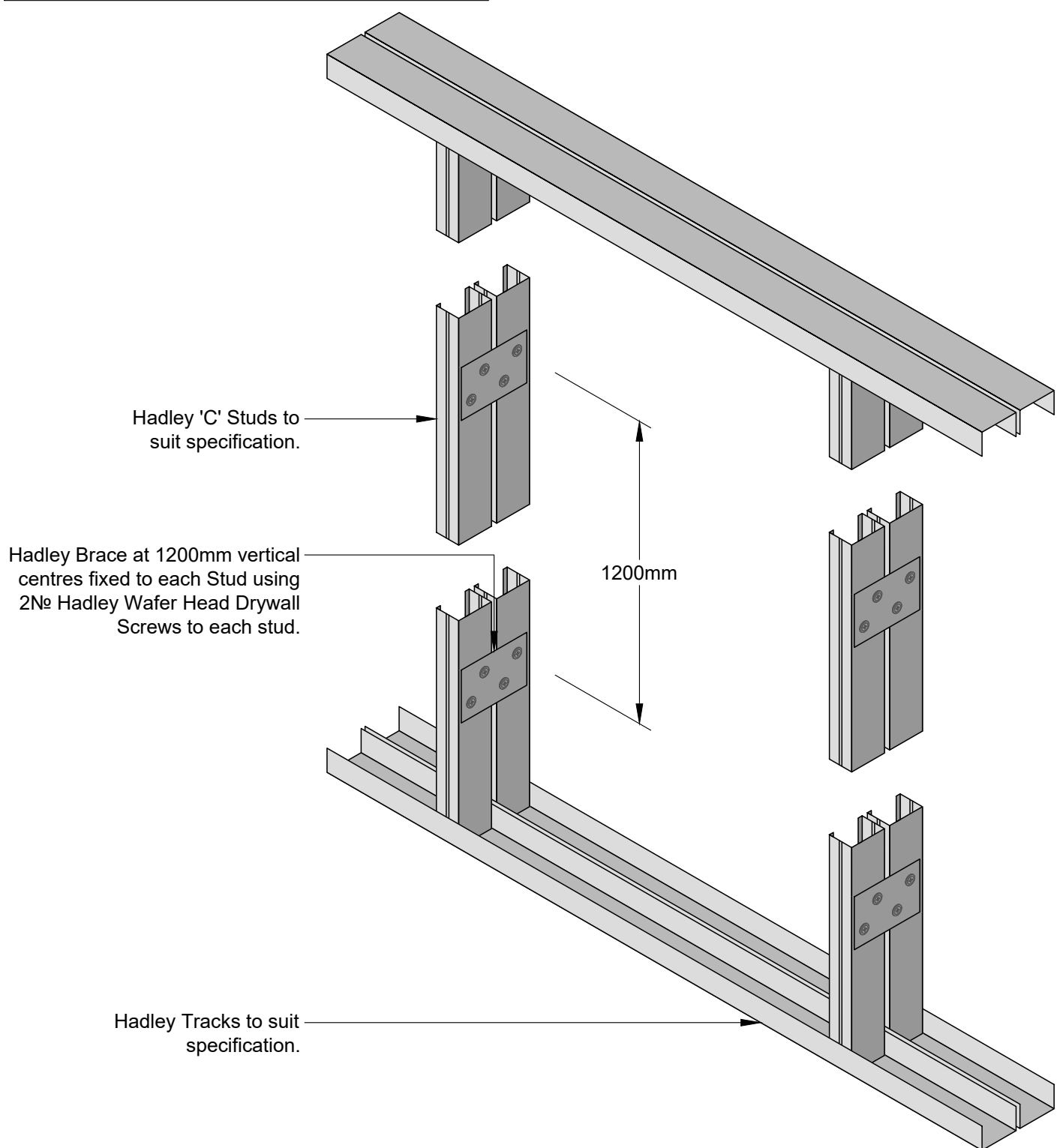
Tel: +44 (0) 121 555 1329

E-mail: hct@hadleygroup.co.uk

Scale:	Date:	Drawn:	Checked:	Dwg No:	Revision:
NTS	Jul 21	FM	JS	DRY-HAD-XX-ZZ-DT-X-0612	00

All performance data and system specifications are for systems constructed with materials & components as shown. The inclusion or substitution of any other manufacturers materials or components could invalidate test data and system performance. The information is provided in good faith and is based upon details received which are assumed to include all relevant facts. No duty of care is owed to the recipient or any other third party and Hadley Industries PLC cannot accept liability in respect of the details shown. None of the content may be distributed or copied directly without prior approval.

Stud and track depths and gauge to suit specification.
Fixing type to suit metalwork gauge.



00	JUL21	First Issue	FM	JS	JS	System details to be read in conjunction with Hadley Group project specification pack. All applications to be built in accordance with British Standards, Building Regulations and Hadley Group tested solutions.
Rev:	Date:	Reason for Issue:	Drn:	Chk:	App:	

Project:

Typical System Detail
See project specification for exact requirements

Title:

Hadley Brace
Partition - Twin Frame Braced
Bracing Section View



Hadley Group, Downing Street,
Smethwick, West Midlands B66 2PA

Tel: +44 (0) 121 555 1329

E-mail: hct@hadleygroup.co.uk

Scale:	Date:	Drawn:	Checked:	Dwg No:	Revision:
NTS	Jul 21	FM	JS	DRY-HAD-XX-ZZ-DT-X-0613	00

All performance data and system specifications are for systems constructed with materials & components as shown. The inclusion or substitution of any other manufacturers materials or components could invalidate test data and system performance. The information is provided in good faith and is based upon details received which are assumed to include all relevant facts. No duty of care is owed to the recipient or any other third party and Hadley Industries PLC cannot accept liability in respect of the details shown. None of the content may be distributed or copied directly without prior approval.