

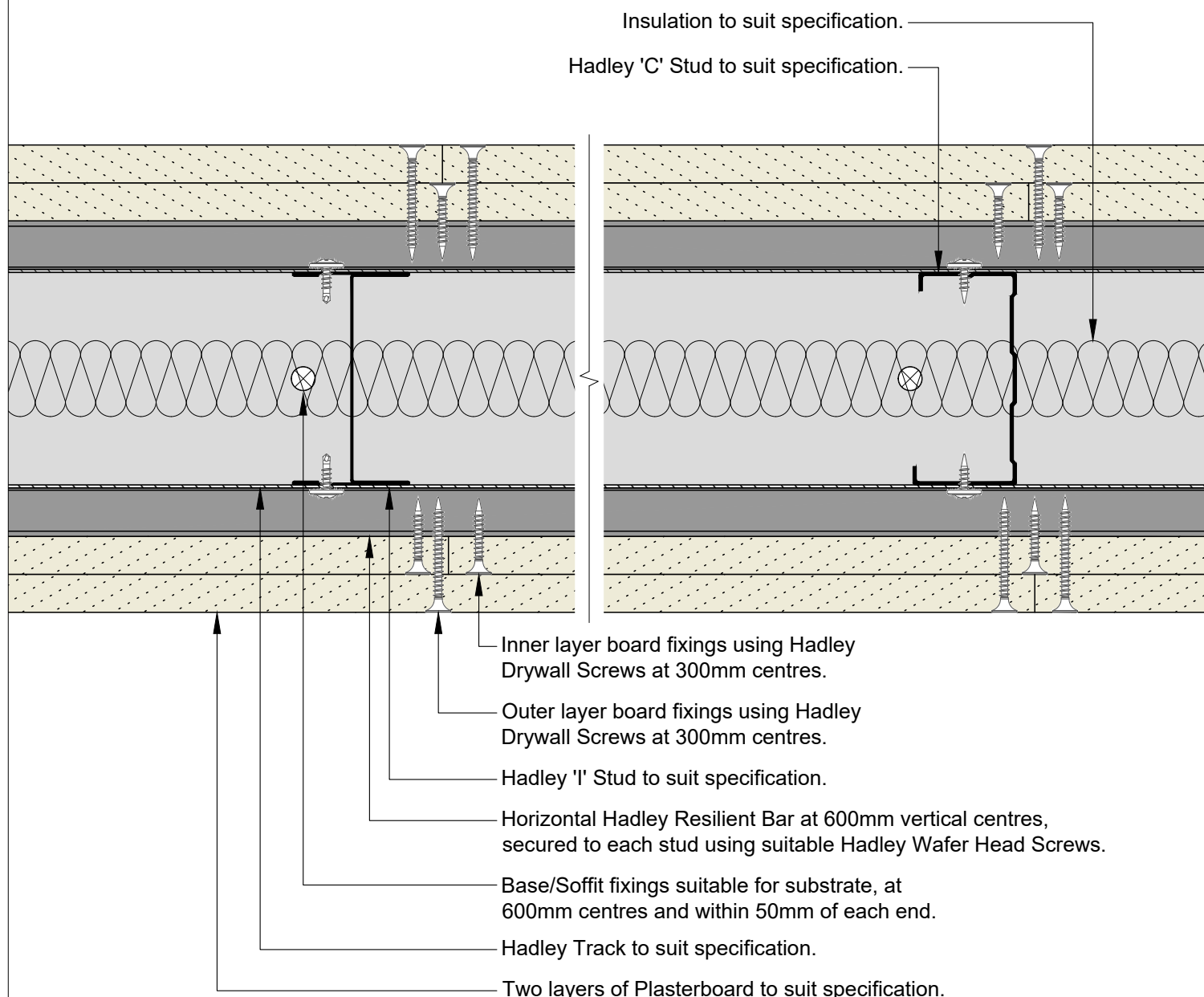
Hadley DRYLINING

Standard Details

Hadley HUSH – Two Sided - Drawings



Board Thickness	Fixing Length
≤15mm	25mm
12.5mm + 12.5mm	25mm + 38mm
12.5mm + 15mm	25mm + 38mm
15mm + 15mm	25mm + 42mm



00	JUL21	First Issue	FM	JS	JS	System details to be read in conjunction with Hadley Group project specification pack. All applications to be built in accordance with British Standards, Building Regulations and Hadley Group tested solutions.
Rev:	Date:	Reason for Issue:	Drn:	Chk:	App:	



Hadley Group, Downing Street,
Smethwick, West Midlands B66 2PA

Tel: +44 (0) 121 555 1329

E-mail: hct@hadleygroup.co.uk

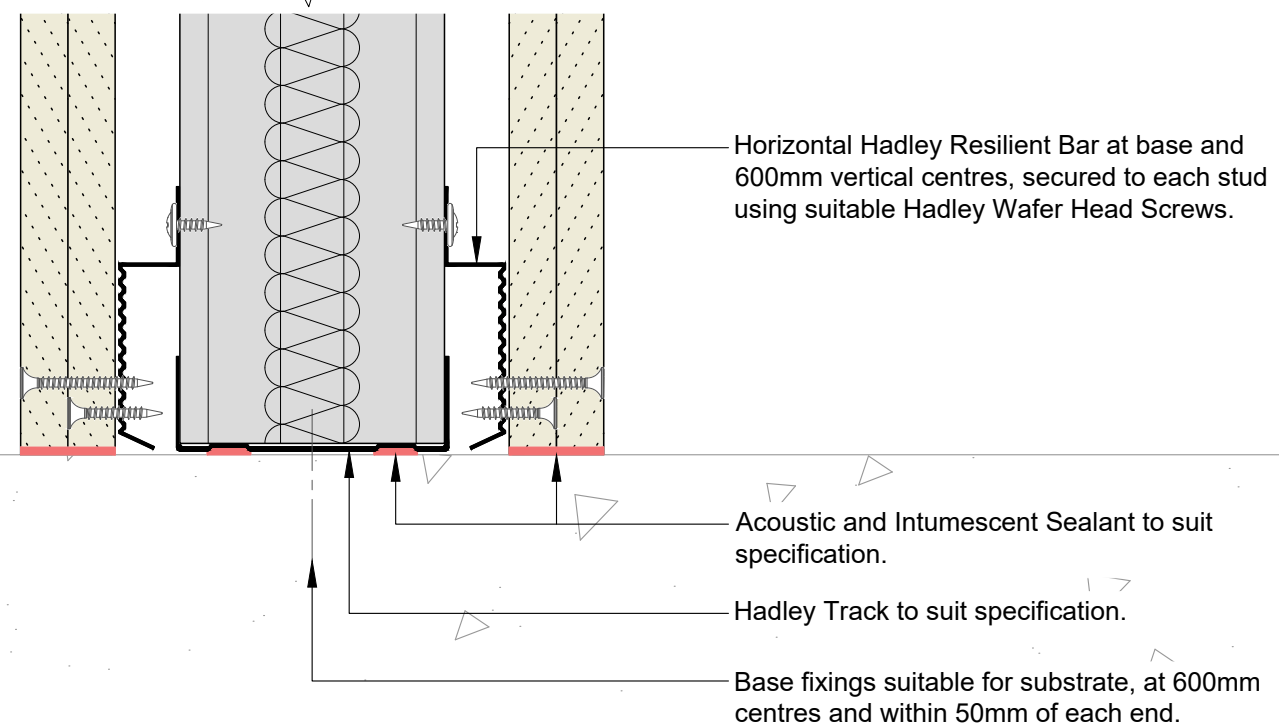
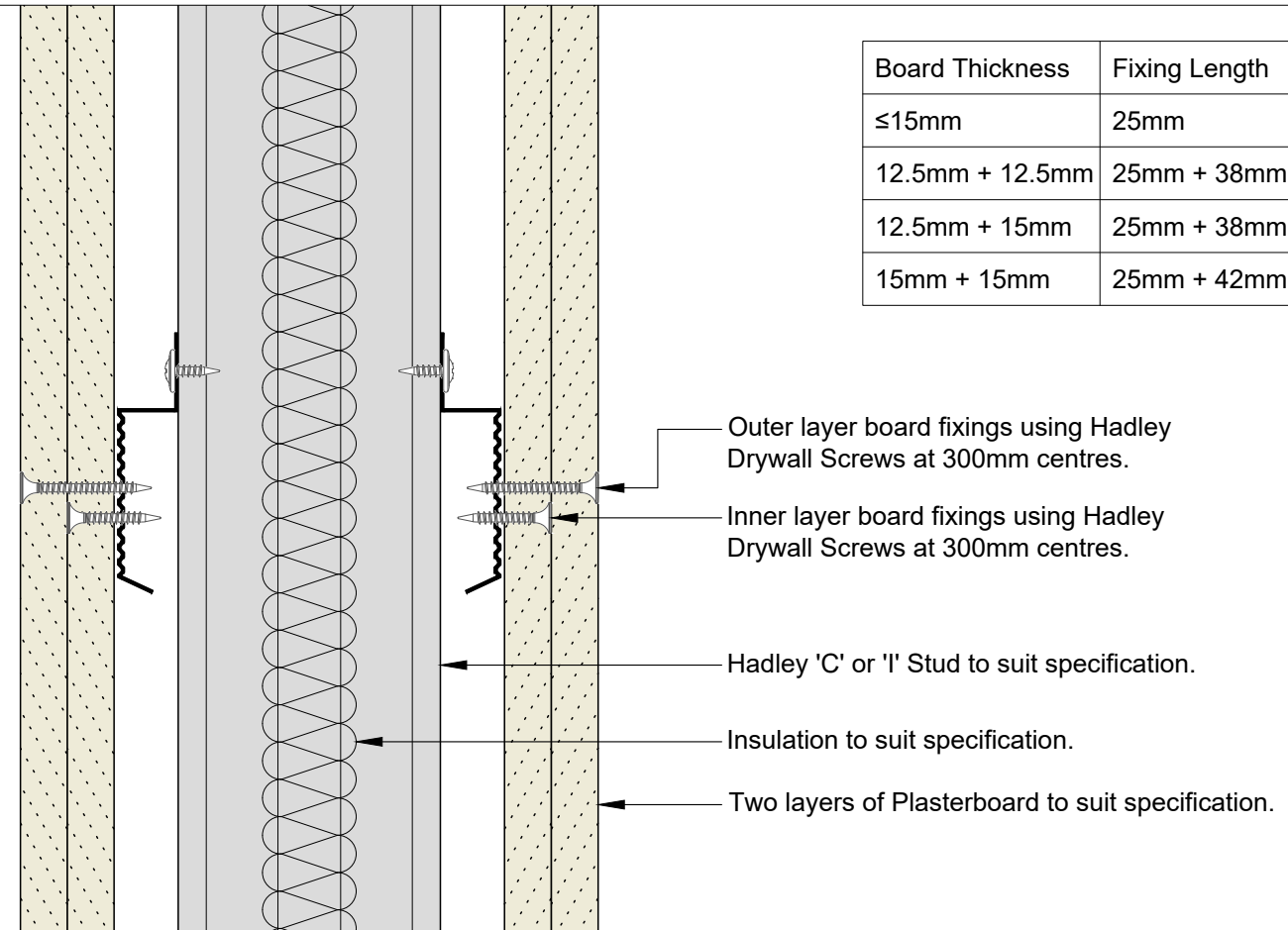
Project:
Typical System Detail
See project specification for exact requirements

Title:
Hadley Hush
Resilient Bar-Two Sided
Plan

Scale: 1:2 @ A4	Date: Jul 21	Drawn: FM	Checked: JS	Dwg No: DRY-HAD-XX-ZZ-DT-X-0501	Revision: 00
--------------------	-----------------	--------------	----------------	---	------------------------

All performance data and system specifications are for systems constructed with materials & components as shown. The inclusion or substitution of any other manufacturers materials or components could invalidate test data and system performance. The information is provided in good faith and is based upon details received which are assumed to include all relevant facts. No duty of care is owed to the recipient or any other third party and Hadley Industries PLC cannot accept liability in respect of the details shown. None of the content may be distributed or copied directly without prior approval.

Board Thickness	Fixing Length
≤15mm	25mm
12.5mm + 12.5mm	25mm + 38mm
12.5mm + 15mm	25mm + 38mm
15mm + 15mm	25mm + 42mm



00	JUL21	First Issue	FM	JS	JS	System details to be read in conjunction with Hadley Group project specification pack. All applications to be built in accordance with British Standards, Building Regulations and Hadley Group tested solutions.
Rev:	Date:	Reason for Issue:	Drn:	Chk:	App:	

Project:

Typical System Detail
See project specification for exact requirements

Title:

Hadley Hush
Resilient Bar-Two Sided
Base

Scale:	Date:	Drawn:	Checked:	Dwg No:	Revision:
1:2 @ A4	Jul 21	FM	JS	DRY-HAD-XX-ZZ-DT-X-0502	00



Hadley Group, Downing Street,
Smethwick, West Midlands B66 2PA

Tel: +44 (0) 121 555 1329

E-mail: hct@hadleygroup.co.uk

All performance data and system specifications are for systems constructed with materials & components as shown. The inclusion or substitution of any other manufacturers materials or components could invalidate test data and system performance. The information is provided in good faith and is based upon details received which are assumed to include all relevant facts. No duty of care is owed to the recipient or any other third party and Hadley Industries PLC cannot accept liability in respect of the details shown. None of the content may be distributed or copied directly without prior approval.

Board Thickness	Fixing Length
≤15mm	25mm
12.5mm + 12.5mm	25mm + 38mm
12.5mm + 15mm	25mm + 38mm
15mm + 15mm	25mm + 42mm

Soffit fixings suitable for substrate, at 600mm centres and within 50mm of each end.

Hadley Track to suit specification.

Acoustic and Intumescent Sealant to suit specification.

Horizontal Hadley Resilient Bar at head and 600mm vertical centres, secured to each stud using suitable Hadley Wafer Head Screws.

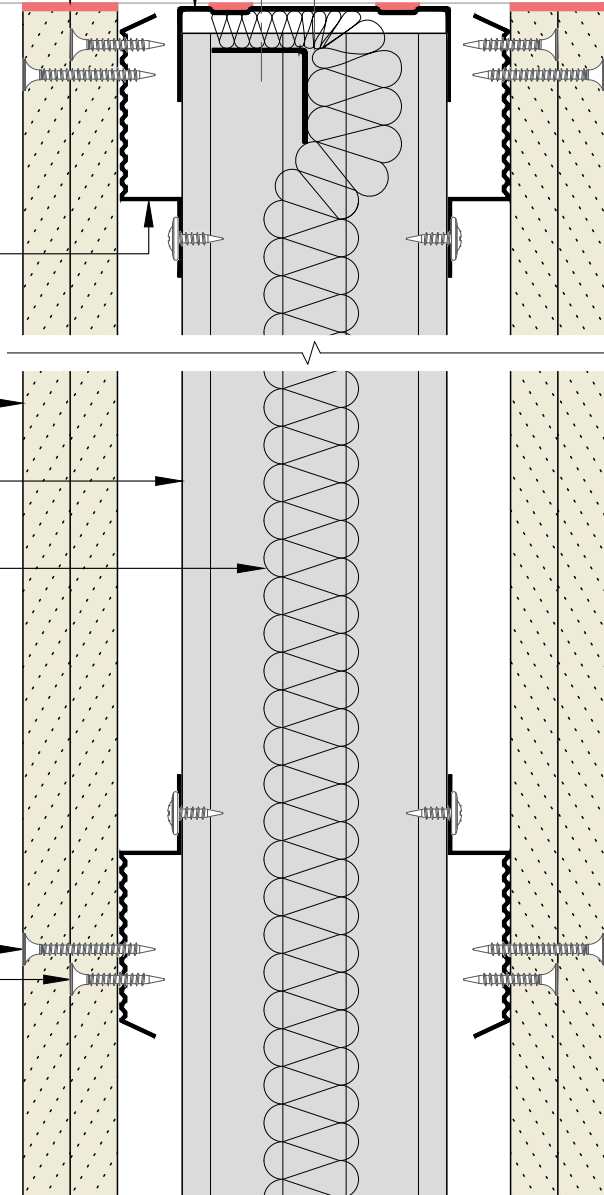
Two layers of Plasterboard to suit specification.

Hadley 'C' or 'I' Stud to suit specification.

Insulation to suit specification, hung from top of partition using Hadley 25x25mm Steel Angle, secured using suitable fixings, within 50mm of each end.

Outer layer board fixings using Hadley Drywall Screws at 300mm centres.

Inner layer board fixings using Hadley Drywall Screws at 300mm centres.



00	JUL21	First Issue	FM	JS	JS	System details to be read in conjunction with Hadley Group project specification pack. All applications to be built in accordance with British Standards, Building Regulations and Hadley Group tested solutions.
Rev:	Date:	Reason for Issue:	Drn:	Chk:	App:	

Project:

Typical System Detail
See project specification for exact requirements

Title:

Hadley Hush
Resilient Bar-Two Sided
Fixed Head

Scale:	Date:	Drawn:	Checked:	Dwg No:	Revision:
1:2 @ A4	Jul 21	FM	JS	DRY-HAD-XX-ZZ-DT-X-0503	00



Hadley Group, Downing Street,
Smethwick, West Midlands B66 2PA

Tel: +44 (0) 121 555 1329

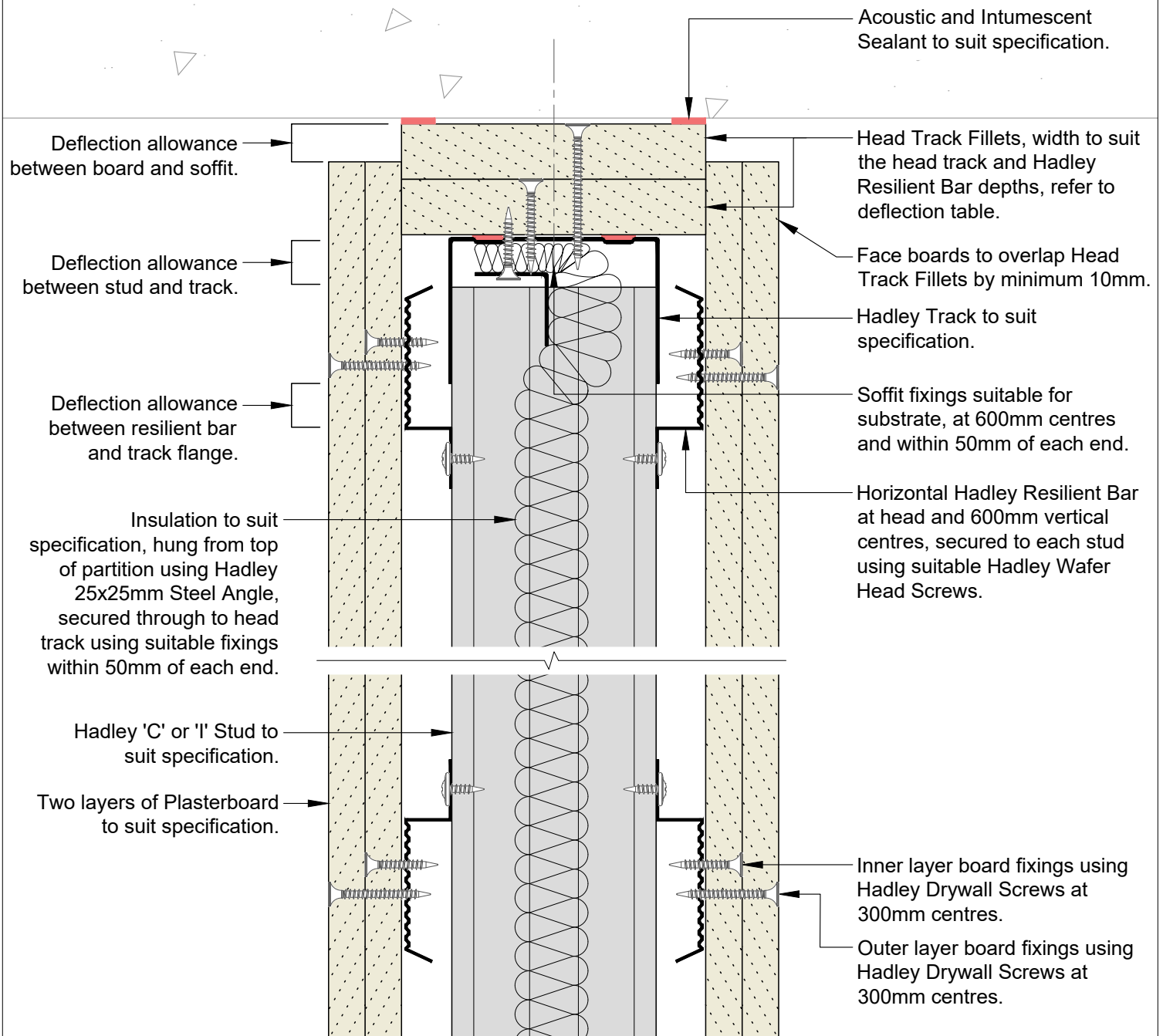
E-mail: hct@hadleygroup.co.uk

All performance data and system specifications are for systems constructed with materials & components as shown. The inclusion or substitution of any other manufacturers materials or components could invalidate test data and system performance. The information is provided in good faith and is based upon details received which are assumed to include all relevant facts. No duty of care is owed to the recipient or any other third party and Hadley Industries PLC cannot accept liability in respect of the details shown. None of the content may be distributed or copied directly without prior approval.

© 2021 Hadley Industries Holdings Limited

Min. Deflection to suit structural engineer design	Min. Head Track Fillet(s)	Hadley Track Flange
5mm	1x15mm Type F Plasterboard	50mm
9mm	1x19mm CoreBoard	50mm
15mm	2x12.5mm Type F Plasterboard	50mm
20mm	2x15mm Type F Plasterboard	50mm
28mm	2x19mm CoreBoard	50mm
35mm	3x15mm Type F Plasterboard	70mm

Board Thickness	Fixing Length
≤15mm	25mm
12.5mm + 12.5mm	25mm + 38mm
12.5mm + 15mm	25mm + 38mm
15mm + 15mm	25mm + 42mm



00	JUL21	First Issue	FM	JS	JS	System details to be read in conjunction with Hadley Group project specification pack. All applications to be built in accordance with British Standards, Building Regulations and Hadley Group tested solutions.
Rev:	Date:	Reason for Issue:	Drn:	Chk:	App:	

Project:

Typical System Detail
See project specification for exact requirements

Title:

Hadley Hush
Resilient Bar-Two Sided
Deflection Head up to 60 mins EI Fire Resistance

Scale:	Date:	Drawn:	Checked:	Dwg No:	Revision:
1:2 @ A4	Jul 21	FM	JS	DRY-HAD-XX-ZZ-DT-X-0504	00



Hadley Group, Downing Street,
Smethwick, West Midlands B66 2PA

Tel: +44 (0) 121 555 1329

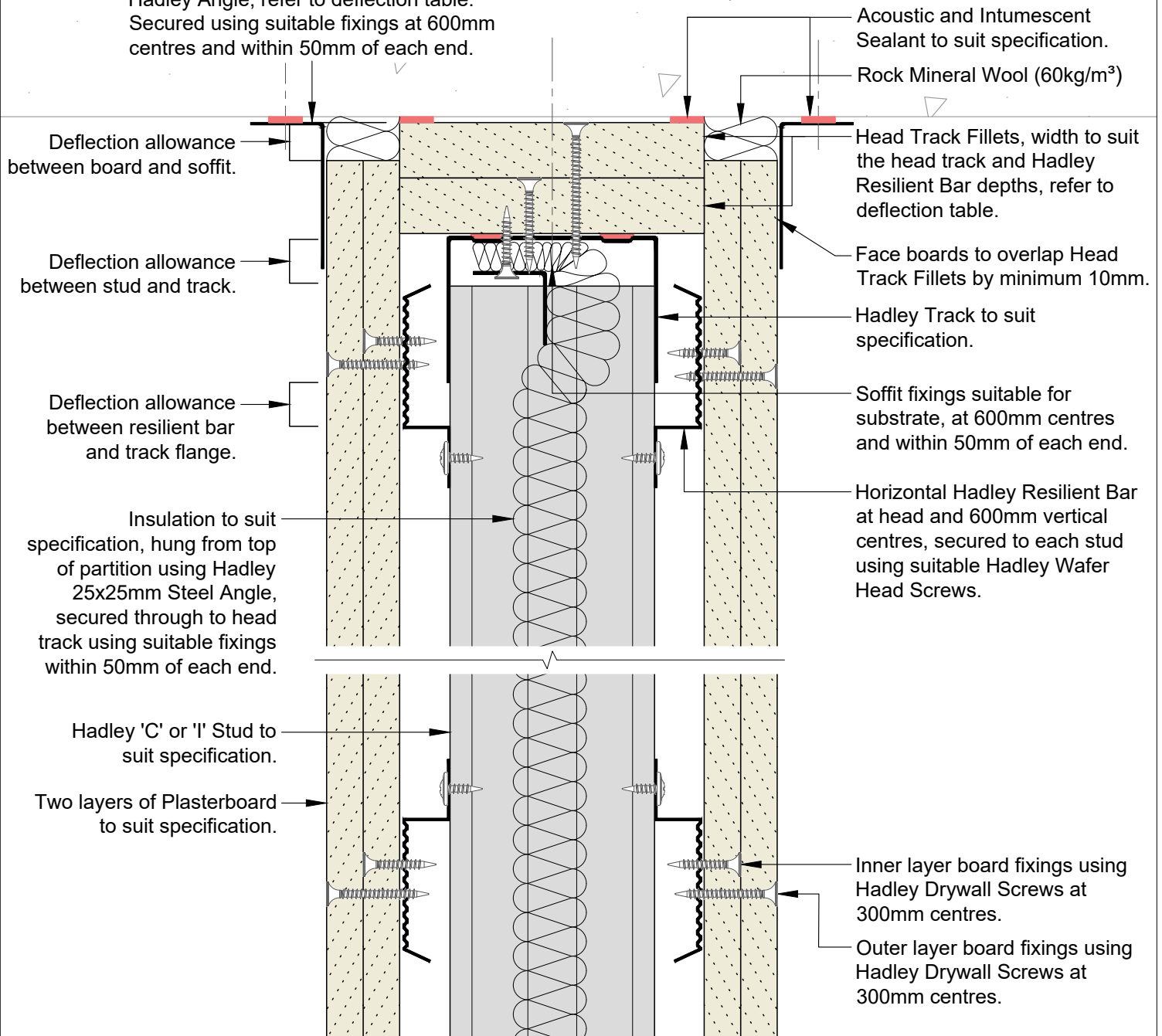
E-mail: hct@hadleygroup.co.uk

All performance data and system specifications are for systems constructed with materials & components as shown. The inclusion or substitution of any other manufacturers materials or components could invalidate test data and system performance. The information is provided in good faith and is based upon details received which are assumed to include all relevant facts. No duty of care is owed to the recipient or any other third party and Hadley Industries PLC cannot accept liability in respect of the details shown. None of the content may be distributed or copied directly without prior approval.

Min. Deflection to suit structural engineer design	Min. Head Track Fillet(s)	Hadley Track Flange	Min. Hadley Angle
5mm	1x15mm Type F Plasterboard	50mm	19x19mm
9mm	1x19mm CoreBoard	50mm	19x19mm
15mm	2x12.5mm Type F Plasterboard	50mm	25x25mm
20mm	2x15mm Type F Plasterboard	50mm	25x50mm
28mm	2x19mm CoreBoard	50mm	25x50mm
35mm	3x15mm Type F Plasterboard	70mm	25x50mm

Board Thickness	Fixing Length
≤15mm	25mm
12.5mm + 12.5mm	25mm + 38mm
12.5mm + 15mm	25mm + 38mm
15mm + 15mm	25mm + 42mm

Hadley Angle, refer to deflection table.
Secured using suitable fixings at 600mm centres and within 50mm of each end.



00	JUL21	First Issue	FM	JS	JS	System details to be read in conjunction with Hadley Group project specification pack. All applications to be built in accordance with British Standards, Building Regulations and Hadley Group tested solutions.
Rev:	Date:	Reason for Issue:	Drn:	Chk:	App:	

Project:

Typical System Detail
See project specification for exact requirements

Title:

Hadley Hush
Resilient Bar-Two Sided
Deflection Head up to 120 mins EI Fire Resistance

Scale:	Date:	Drawn:	Checked:	Dwg No:	Revision:
1:2 @ A4	Jul 21	FM	JS	DRY-HAD-XX-ZZ-DT-X-0505	00



Hadley Group, Downing Street,
Smethwick, West Midlands B66 2PA

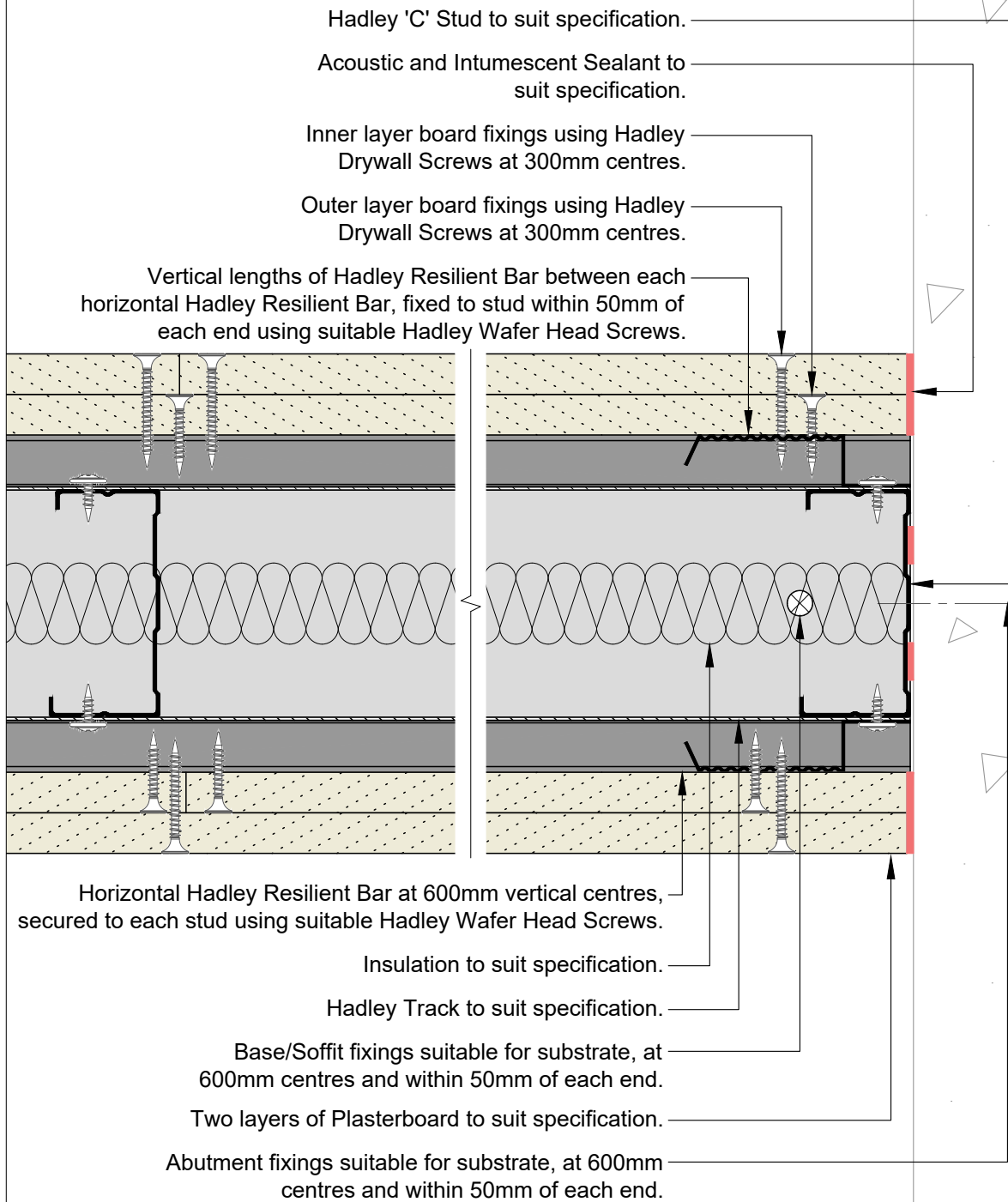
Tel: +44 (0) 121 555 1329

E-mail: hct@hadleygroup.co.uk

All performance data and system specifications are for systems constructed with materials & components as shown. The inclusion or substitution of any other manufacturers materials or components could invalidate test data and system performance. The information is provided in good faith and is based upon details received which are assumed to include all relevant facts. No duty of care is owed to the recipient or any other third party and Hadley Industries PLC cannot accept liability in respect of the details shown. None of the content may be distributed or copied directly without prior approval.

© 2021 Hadley Industries Holdings Limited

Board Thickness	Fixing Length
≤15mm	25mm
12.5mm + 12.5mm	25mm + 38mm
12.5mm + 15mm	25mm + 38mm
15mm + 15mm	25mm + 42mm



00	JUL21	First Issue	FM	JS	JS	System details to be read in conjunction with Hadley Group project specification pack. All applications to be built in accordance with British Standards, Building Regulations and Hadley Group tested solutions.
Rev:	Date:	Reason for Issue:	Drn:	Chk:	App:	



Hadley Group, Downing Street,
Smethwick, West Midlands B66 2PA
Tel: +44 (0) 121 555 1329
E-mail: hct@hadleygroup.co.uk

Project: Typical System Detail See project specification for exact requirements					
Title: Hadley Hush Resilient Bar-Two Sided Abutment to Concrete/Blockwork					
Scale: 1:2 @ A4	Date: Jul 21	Drawn: FM	Checked: JS	Dwg No: DRY-HAD-XX-ZZ-DT-X-0506	Revision: 00

All performance data and system specifications are for systems constructed with materials & components as shown. The inclusion or substitution of any other manufacturers materials or components could invalidate test data and system performance. The information is provided in good faith and is based upon details received which are assumed to include all relevant facts. No duty of care is owed to the recipient or any other third party and Hadley Industries PLC cannot accept liability in respect of the details shown. None of the content may be distributed or copied directly without prior approval.

Where systems have unequal performance, seal the gap between boards using acoustic and intumescent mastic, subject to confirmation from project acoustic and fire consultants.

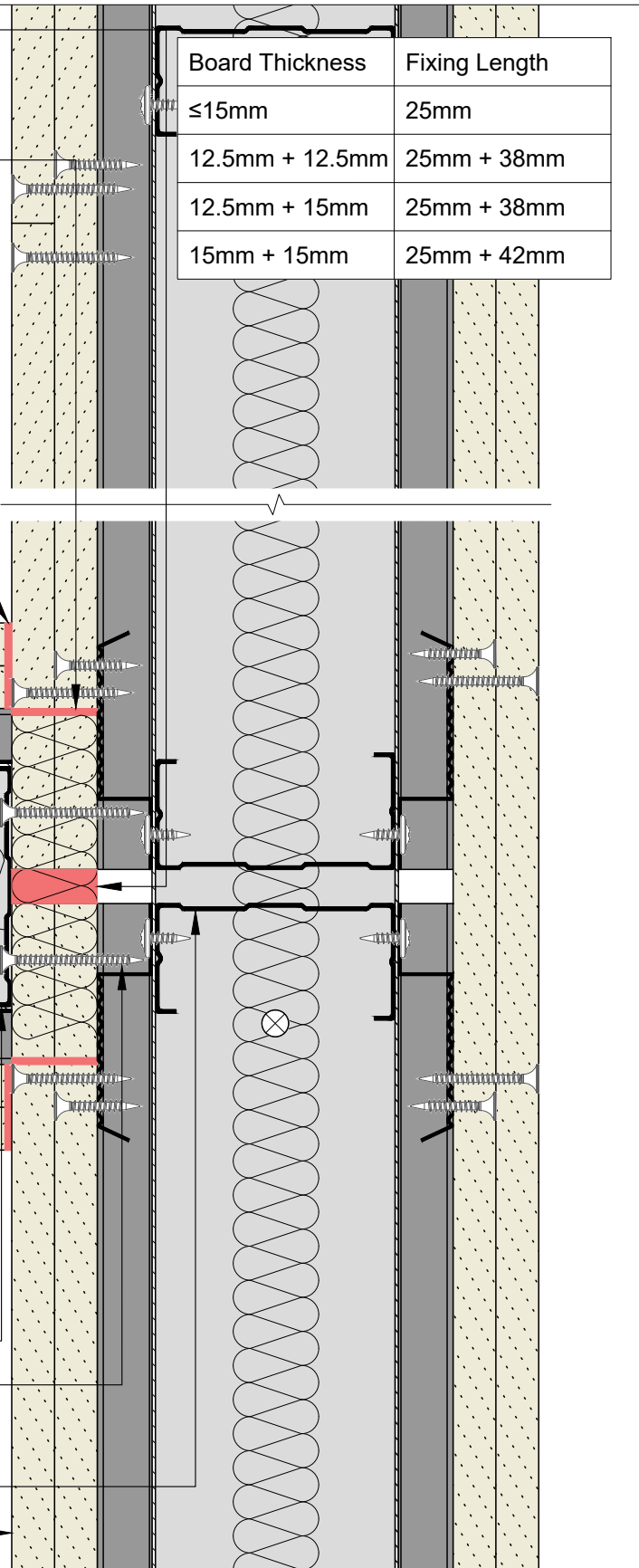
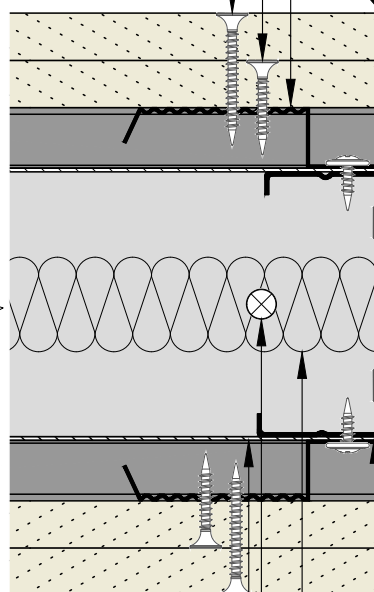
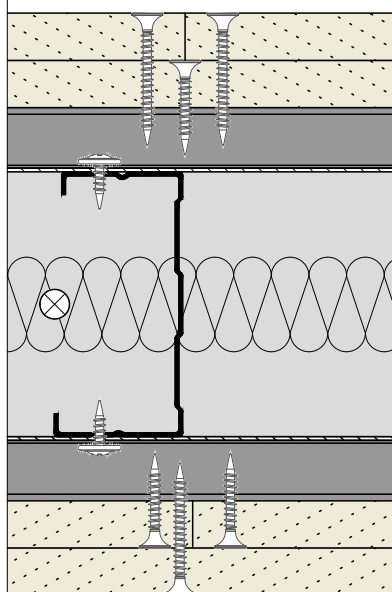
Rock Mineral Wool (60kg/m³) installed to deflection void above boards, sealed with acoustic and intumescent sealant.

Acoustic and Intumescent Sealant to suit specification.

Vertical lengths of Hadley Resilient Bar between each horizontal Hadley Resilient Bar, fixed to stud within 50mm of each end using suitable Hadley Wafer Head Screws.

Inner layer board fixings using Hadley Drywall Screws at 300mm centres.

Outer layer board fixings using Hadley Drywall Screws at 300mm centres.



Hadley Track to suit specification.

Base/Soffit fixings suitable for substrate, at 600mm centres and within 50mm of each end.

Insulation to suit specification.

Hadley 'C' Stud to suit specification.

Abutment fixings using Hadley Drywall Screws into each horizontal resilient bar.

Additional Hadley 'C' Stud on junction.

Two layers of Plasterboard to suit specification.

00	JUL21	First Issue	FM	JS	JS	System details to be read in conjunction with Hadley Group project specification pack. All applications to be built in accordance with British Standards, Building Regulations and Hadley Group tested solutions.
Rev:	Date:	Reason for Issue:	Drn:	Chk:	App:	

Project:

Typical System Detail
See project specification for exact requirements

Title:

Hadley Hush
Resilient Bar-Two Sided
Abutment to Drylining Partition - Flanking detail

Scale:

1:2 @ A4

Date:

Jul 21

Drawn:

FM

Checked:

JS

Dwg No:

DRY-HAD-XX-ZZ-DT-X-0507

Revision:

00



Hadley Group, Downing Street,
Smethwick, West Midlands B66 2PA

Tel: +44 (0) 121 555 1329

E-mail: hct@hadleygroup.co.uk

All performance data and system specifications are for systems constructed with materials & components as shown. The inclusion or substitution of any other manufacturers materials or components could invalidate test data and system performance. The information is provided in good faith and is based upon details received which are assumed to include all relevant facts. No duty of care is owed to the recipient or any other third party and Hadley Industries PLC cannot accept liability in respect of the details shown. None of the content may be distributed or copied directly without prior approval.

© 2021 Hadley Industries Holdings Limited

Horizontal Hadley Resilient Bar at 600mm vertical centres, secured to each stud using suitable Hadley Wafer Head Screws.

Splay Track and head fillets, ensuring gaps are sealed.

Two layers of Plasterboard to suit specification.

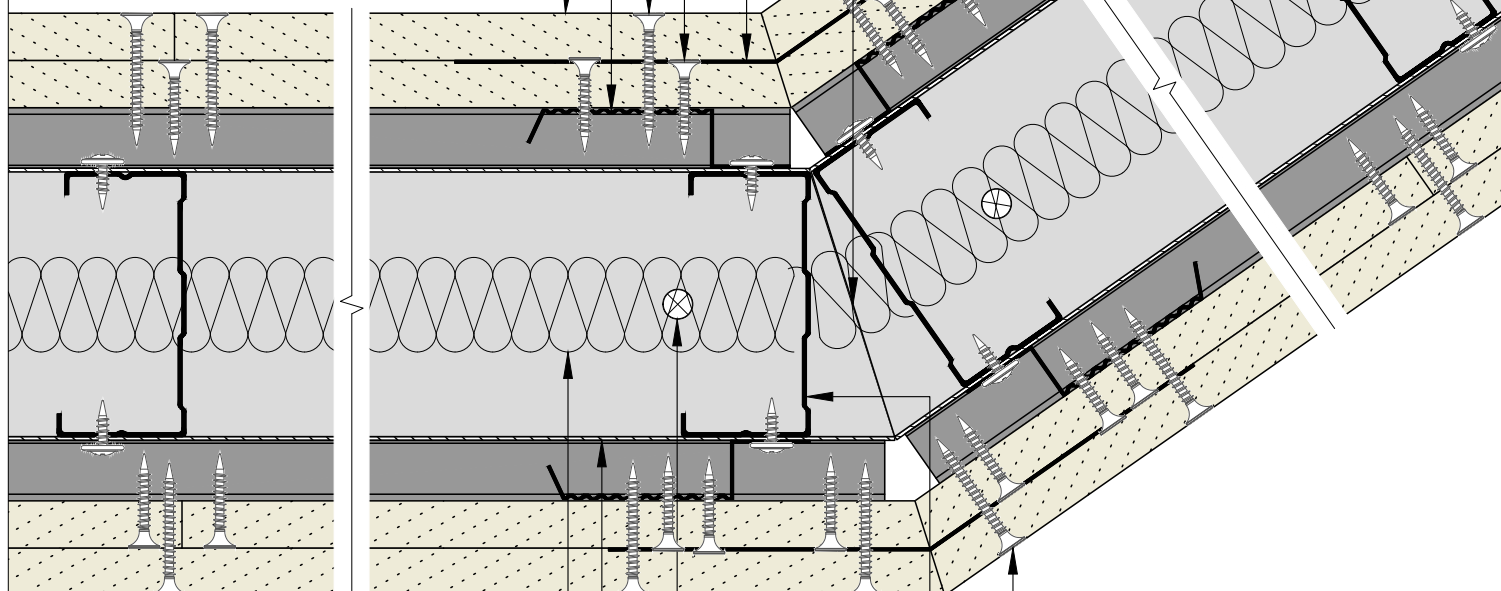
Hadley Internal Fixing Angle secured to each horizontal Hadley Resilient Bar using Hadley Drywall Screws.

Inner layer board fixings using Hadley Drywall Screws at 300mm centres.

Outer layer board fixings using Hadley Drywall Screws at 300mm centres.

Vertical lengths of Hadley Resilient Bar between each horizontal Hadley Resilient Bar, fixed to stud within 50mm of each end using suitable Hadley Wafer Head Screws.

Board Thickness	Fixing Length
≤15mm	25mm
12.5mm + 12.5mm	25mm + 38mm
12.5mm + 15mm	25mm + 38mm
15mm + 15mm	25mm + 42mm



Insulation to suit specification.

Hadley Track to suit specification.

Base/Soffit fixings suitable for substrate, at 600mm centres and within 50mm of each end.

Hadley 'C' Stud to suit specification.

External corner board fixings using Hadley Drywall Screws at 200mm centres.

00	JUL21	First Issue	FM	JS	JS	System details to be read in conjunction with Hadley Group project specification pack. All applications to be built in accordance with British Standards, Building Regulations and Hadley Group tested solutions.
Rev:	Date:	Reason for Issue:	Drm:	Chk:	App:	

Project:

Typical System Detail
See project specification for exact requirements

Title:

Hadley Hush
Resilient Bar-Two Sided
Splayed Corner

Scale:	Date:	Drawn:	Checked:	Dwg No:	Revision:
1:2 @ A4	Jul 21	FM	JS	DRY-HAD-XX-ZZ-DT-X-0508	00



Hadley Group, Downing Street,
Smethwick, West Midlands B66 2PA

Tel: +44 (0) 121 555 1329

E-mail: hct@hadleygroup.co.uk

All performance data and system specifications are for systems constructed with materials & components as shown. The inclusion or substitution of any other manufacturers materials or components could invalidate test data and system performance. The information is provided in good faith and is based upon details received which are assumed to include all relevant facts. No duty of care is owed to the recipient or any other third party and Hadley Industries PLC cannot accept liability in respect of the details shown. None of the content may be distributed or copied directly without prior approval.

Two layers of Plasterboard to suit specification.

Abutment fixings using Hadley Drywall Screws at into each horizontal resilient bar.

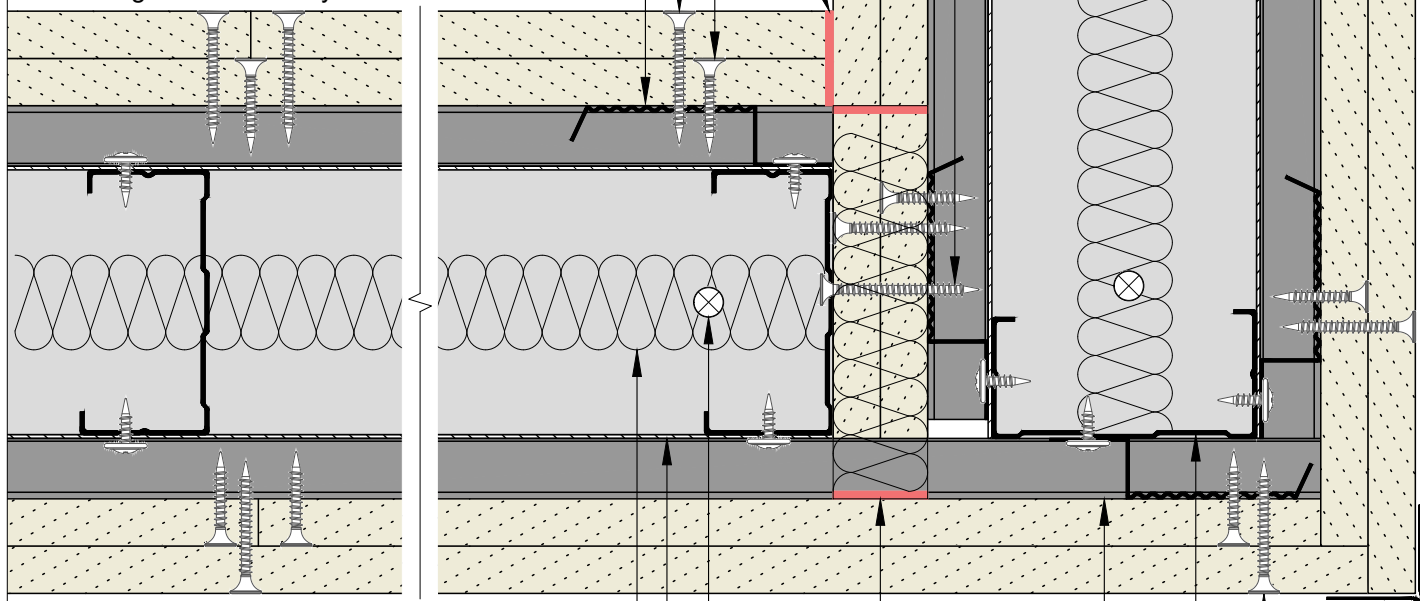
Acoustic and Intumescent Sealant to suit specification.

Inner layer board fixings using Hadley Drywall Screws at 300mm centres.

Outer layer board fixings using Hadley Drywall Screws at 300mm centres.

Vertical lengths of Hadley Resilient Bar between each horizontal Hadley Resilient Bar, fixed to stud within 50mm of each end using suitable Hadley Wafer Head Screws.

Board Thickness	Fixing Length
≤15mm	25mm
12.5mm + 12.5mm	25mm + 38mm
12.5mm + 15mm	25mm + 38mm
15mm + 15mm	25mm + 42mm



Insulation to suit specification.

Hadley Track to suit specification.

Base/Soffit fixings suitable for substrate, at 600mm centres and within 50mm of each end.

Rock Mineral Wool (60kg/m³) installed to deflection void above boards, sealed with Acoustic and Intumescent Sealant.

Ensure head track fillets extend over the resilient bars.

Hadley 'C' Stud to suit specification.

External corner fixings using Hadley Drywall Screws at 200mm centres.

Hadley Corner Bead.

00	JUL21	First Issue	FM	JS	JS	System details to be read in conjunction with Hadley Group project specification pack. All applications to be built in accordance with British Standards, Building Regulations and Hadley Group tested solutions.
Rev:	Date:	Reason for Issue:	Drm:	Chk:	App:	

Project:

Typical System Detail
See project specification for exact requirements

Title:

Hadley Hush
Resilient Bar-Two Sided
90° Corner

Scale:	Date:	Drawn:	Checked:	Dwg No:	Revision:
1:2 @ A4	Jul 21	FM	JS	DRY-HAD-XX-ZZ-DT-X-0510	00



Hadley Group, Downing Street,
Smethwick, West Midlands B66 2PA

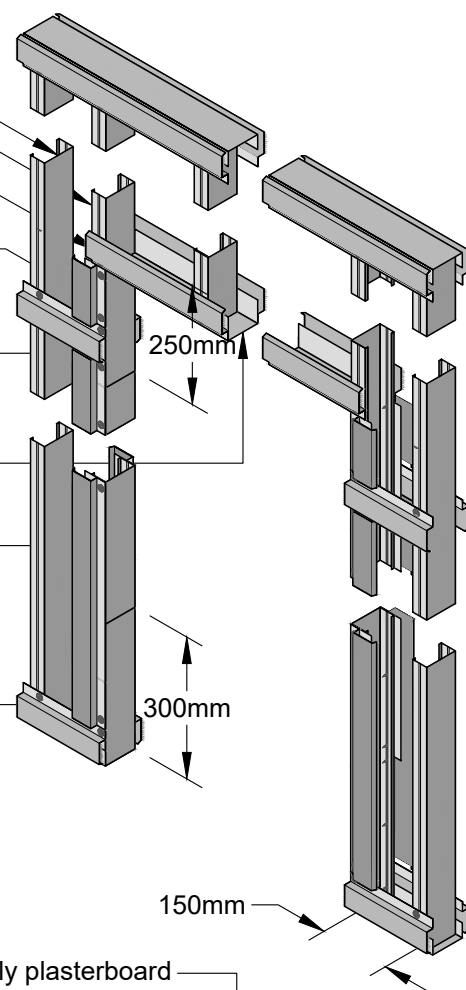
Tel: +44 (0) 121 555 1329

E-mail: hct@hadleygroup.co.uk

All performance data and system specifications are for systems constructed with materials & components as shown. The inclusion or substitution of any other manufacturers materials or components could invalidate test data and system performance. The information is provided in good faith and is based upon details received which are assumed to include all relevant facts. No duty of care is owed to the recipient or any other third party and Hadley Industries PLC cannot accept liability in respect of the details shown. None of the content may be distributed or copied directly without prior approval.

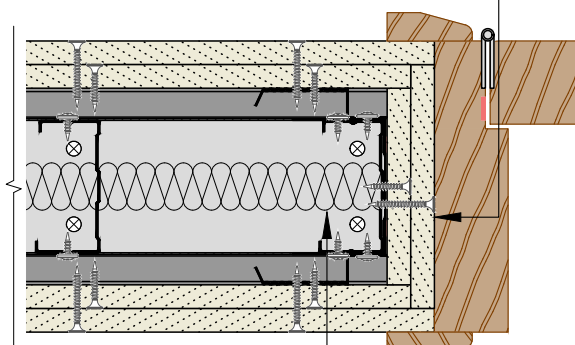
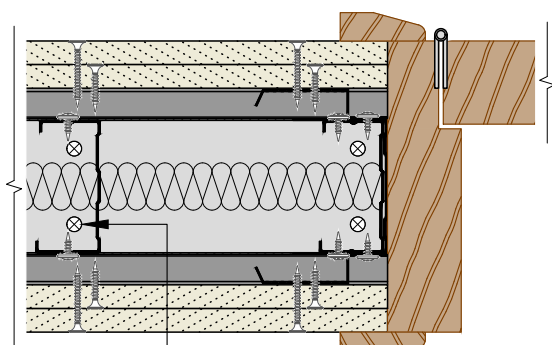
Stud and track depths and gauge to suit specification.
Fixing type to suit metalwork gauge.

- Additional Hadley Stud located up to 150mm from jamb stud.
- Avoid outer board joint located on the door jamb.
- Horizontal Hadley Resilient Bar at 600mm vertical centres, secured to each stud using suitable Hadley Wafer Head Screws.
- Vertical lengths of Hadley Resilient Bar between each horizontal Hadley Resilient Bar, fixed to stud within 50mm of each end using suitable Hadley Wafer Head Screws.
- Hadley Track cut and bent to extend 250mm down stud, fixed through both flanges using 2Nø Hadley Wafer Head Drywall Screws each side.
- Hadley Track to suit specification. Lintel detail to suit opening width.
- Hadley Track sleeved over stud between returned channels at opening head & base, fixed through both flanges using Hadley Wafer Head Drywall Screws at 300mm centres and within 50mm of each end for each side.
- Hadley Track cut and bent to extend vertically 300mm, fixed through both flanges using 3Nø Hadley Wafer Head Drywall Screws each side.



Plan View

For fire rated openings, apply plasterboard as per face board specification to the reveals.



Indicative door frame and architraves by others.

Base track fixed with pairs of suitable fixings 150mm apart.

Timber fillets, omitted for clarity, within door jamb to suit door manufacturers application requirements and tested solution.

00	JUL21	First Issue	FM	JS	JS	System details to be read in conjunction with Hadley Group project specification pack. All applications to be built in accordance with British Standards, Building Regulations and Hadley Group tested solutions.
Rev:	Date:	Reason for Issue:	Drn:	Chk:	App:	

Project:

Typical System Detail
See project specification for exact requirements

Title:

Hadley Hush
Resilient Bar-Two Sided
Doorway 61-100 kg



Hadley Group, Downing Street,
Smethwick, West Midlands B66 2PA

Tel: +44 (0) 121 555 1329

E-mail: hct@hadleygroup.co.uk

Scale:	Date:	Drawn:	Checked:	Dwg No:	Revision:
NTS	Jul 21	FM	JS	DRY-HAD-XX-ZZ-DT-X-0513	00

All performance data and system specifications are for systems constructed with materials & components as shown. The inclusion or substitution of any other manufacturers materials or components could invalidate test data and system performance. The information is provided in good faith and is based upon details received which are assumed to include all relevant facts. No duty of care is owed to the recipient or any other third party and Hadley Industries PLC cannot accept liability in respect of the details shown. None of the content may be distributed or copied directly without prior approval.

Stud and track depths and gauge to suit specification.
Fixing type to suit metalwork gauge.

Avoid outer board joint located on the door jamb.

Horizontal Hadley Resilient Bar at 600mm vertical centres,
secured to each stud using suitable Hadley Wafer Head Screws.

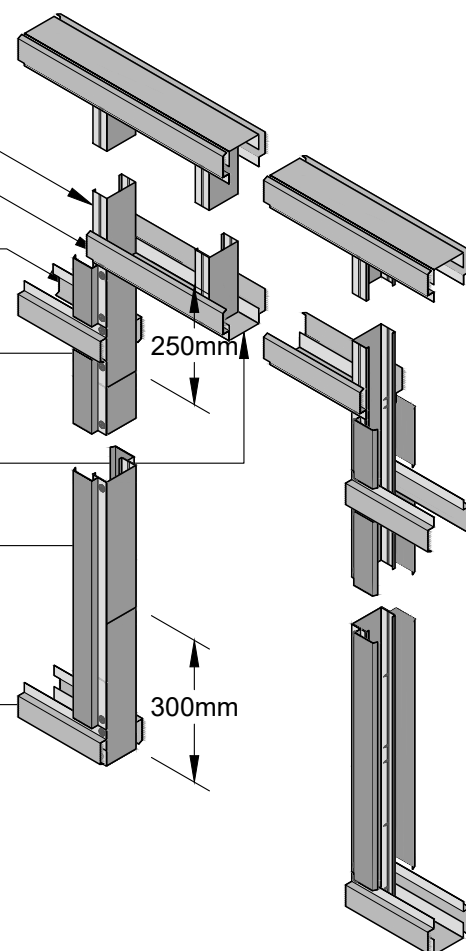
Vertical lengths of Hadley Resilient Bar between each
horizontal Hadley Resilient Bar, fixed to stud within 50mm of
each end using suitable Hadley Wafer Head Screws.

Hadley Track cut and bent to extend 250mm down stud, fixed
through both flanges using 2N^o Hadley Wafer Head Drywall
Screws each side.

Hadley Track to suit specification.
Lintel detail to suit opening width.

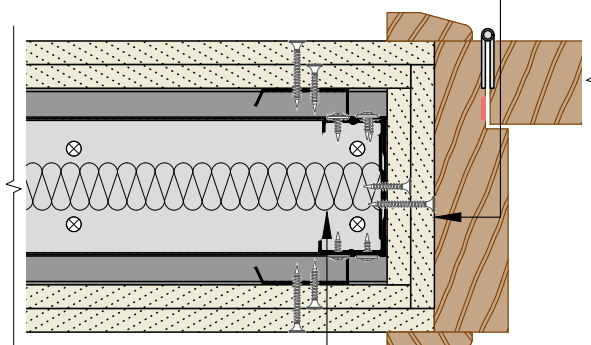
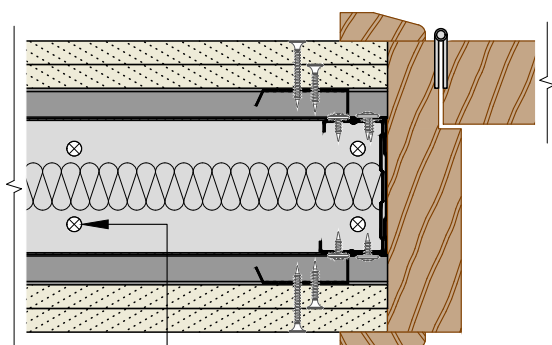
Hadley Track sleeved over stud between returned channels at
opening head & base, fixed through both flanges using Hadley
Wafer Head Drywall Screws at 300mm centres and within 50mm
of each end for each side.

Hadley Track cut and bent to extend vertically 300mm, fixed
through both flanges using 3N^o Hadley Wafer Head Drywall
Screws each side.



Plan View

For fire rated openings, apply plasterboard
as per face board specification to the reveals.



Indicative door frame and
architraves by others.

Base track fixed with pairs of
suitable fixings 150mm apart.

Timber fillets, omitted for
clarity, within door jamb to suit
door manufacturers
application requirements and
tested solution.

00	JUL21	First Issue	FM	JS	JS	System details to be read in conjunction with Hadley Group project specification pack. All applications to be built in accordance with British Standards, Building Regulations and Hadley Group tested solutions.
Rev:	Date:	Reason for Issue:	Drn:	Chk:	App:	

Project:

Typical System Detail
See project specification for exact requirements

Title:

Hadley Hush
Resilient Bar-Two Sided
Doorway 0-60 kg



Hadley Group, Downing Street,
Smethwick, West Midlands B66 2PA

Tel: +44 (0) 121 555 1329

E-mail: hct@hadleygroup.co.uk

Scale:	Date:	Drawn:	Checked:	Dwg No:	Revision:
NTS	Jul 21	FM	JS	DRY-HAD-XX-ZZ-DT-X-0512	00

All performance data and system specifications are for systems constructed with materials & components as shown. The inclusion or substitution of any other manufacturers materials or components could invalidate test data and system performance. The information is provided in good faith and is based upon details received which are assumed to include all relevant facts. No duty of care is owed to the recipient or any other third party and Hadley Industries PLC cannot accept liability in respect of the details shown. None of the content may be distributed or copied directly without prior approval.