

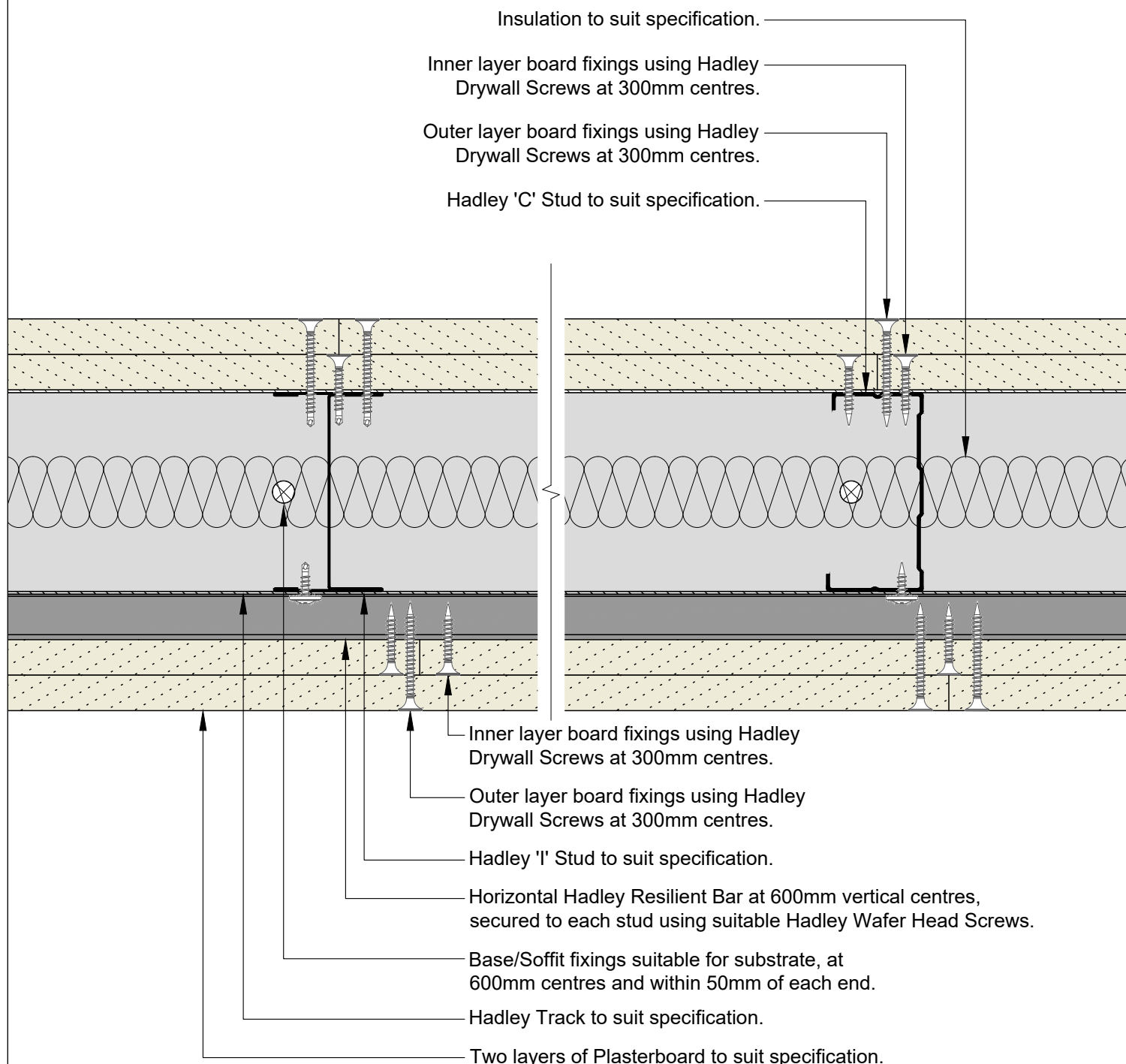
# Hadley DRYLINING

## Standard Details

Hadley HUSH – One Side - Drawings



Board Thickness	Fixing Length
≤15mm	25mm
12.5mm + 12.5mm	25mm + 38mm
12.5mm + 15mm	25mm + 38mm
15mm + 15mm	25mm + 42mm



00	JUL21	First Issue	FM	JS	JS	System details to be read in conjunction with Hadley Group project specification pack. All applications to be built in accordance with British Standards, Building Regulations and Hadley Group tested solutions.
Rev:	Date:	Reason for Issue:	Drn:	Chk:	App:	

Project:					
Typical System Detail					
See project specification for exact requirements					
Title:					
<b>Hadley Hush</b>					
Resilient Bar-One Sided					
Plan					
Scale:	Date:	Drawn:	Checked:	Dwg No:	Revision:
1:2 @ A4	Jul 21	FM	JS	<b>DRY-HAD-XX-ZZ-DT-X-0401</b>	<b>00</b>



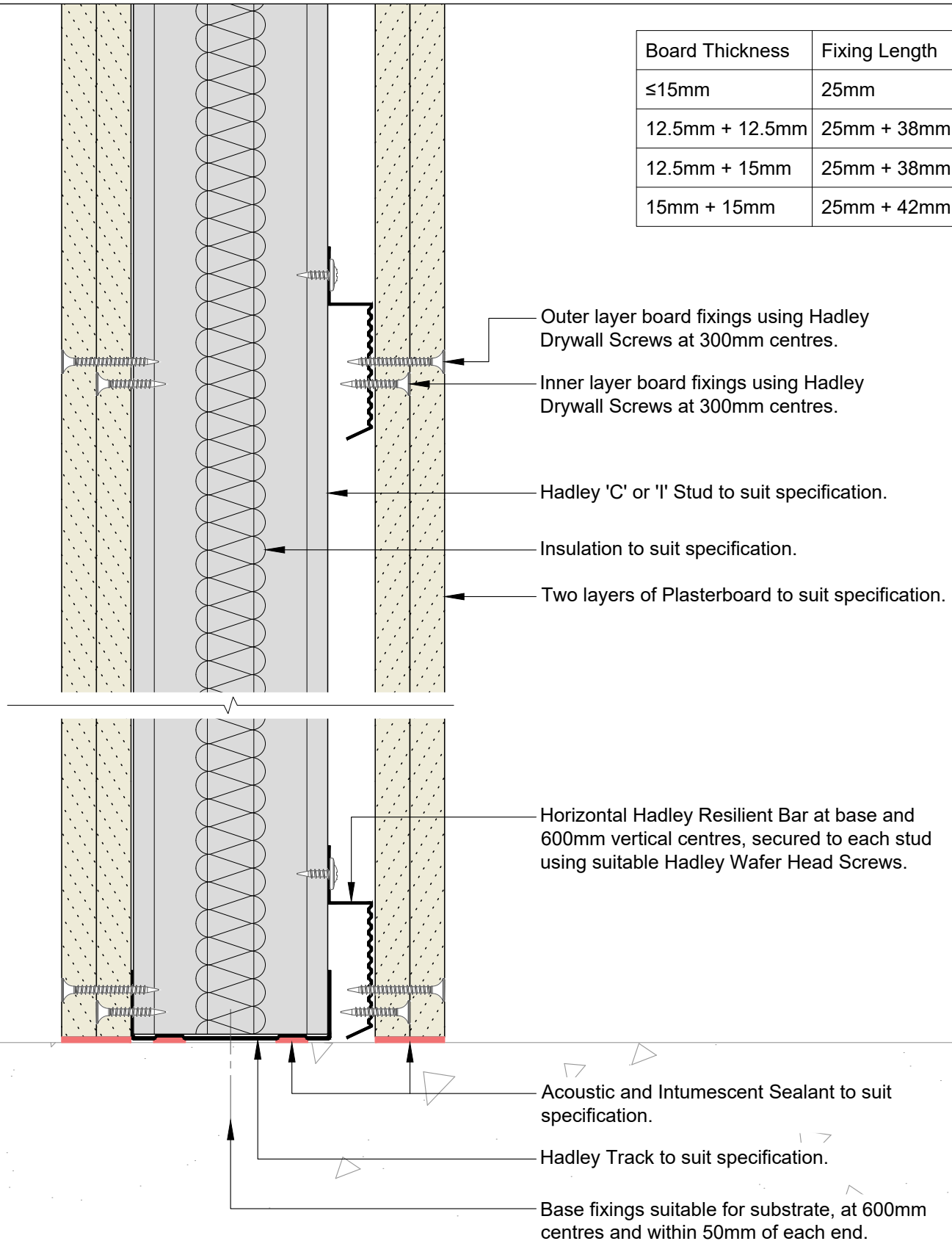
Hadley Group, Downing Street,  
Smethwick, West Midlands B66 2PA

Tel: +44 (0) 121 555 1329

E-mail: hct@hadleygroup.co.uk

All performance data and system specifications are for systems constructed with materials & components as shown. The inclusion or substitution of any other manufacturers materials or components could invalidate test data and system performance. The information is provided in good faith and is based upon details received which are assumed to include all relevant facts. No duty of care is owed to the recipient or any other third party and Hadley Industries PLC cannot accept liability in respect of the details shown. None of the content may be distributed or copied directly without prior approval.

Board Thickness	Fixing Length
≤15mm	25mm
12.5mm + 12.5mm	25mm + 38mm
12.5mm + 15mm	25mm + 38mm
15mm + 15mm	25mm + 42mm



00	JUL21	First Issue	FM	JS	JS	System details to be read in conjunction with Hadley Group project specification pack. All applications to be built in accordance with British Standards, Building Regulations and Hadley Group tested solutions.
Rev:	Date:	Reason for Issue:	Drn:	Chk:	App:	

Project:					
Typical System Detail					
See project specification for exact requirements					
Title:					
<b>Hadley Hush</b>					
Resilient Bar-One Sided					
Base					
Scale:	Date:	Drawn:	Checked:	Dwg No:	Revision:
1:2 @ A4	Jul 21	FM	JS	<b>DRY-HAD-XX-ZZ-DT-X-0402</b>	<b>00</b>



Hadley Group, Downing Street,  
Smethwick, West Midlands B66 2PA

Tel: +44 (0) 121 555 1329

E-mail: hct@hadleygroup.co.uk

All performance data and system specifications are for systems constructed with materials & components as shown. The inclusion or substitution of any other manufacturers materials or components could invalidate test data and system performance. The information is provided in good faith and is based upon details received which are assumed to include all relevant facts. No duty of care is owed to the recipient or any other third party and Hadley Industries PLC cannot accept liability in respect of the details shown. None of the content may be distributed or copied directly without prior approval.

Board Thickness	Fixing Length
≤15mm	25mm
12.5mm + 12.5mm	25mm + 38mm
12.5mm + 15mm	25mm + 38mm
15mm + 15mm	25mm + 42mm

Soffit fixings suitable for substrate, at 600mm centres and within 50mm of each end.

Hadley Track to suit specification.

Acoustic and Intumescent Sealant to suit specification.

Horizontal Hadley Resilient Bar at head and 600mm vertical centres, secured to each stud using suitable Hadley Wafer Head Screws.

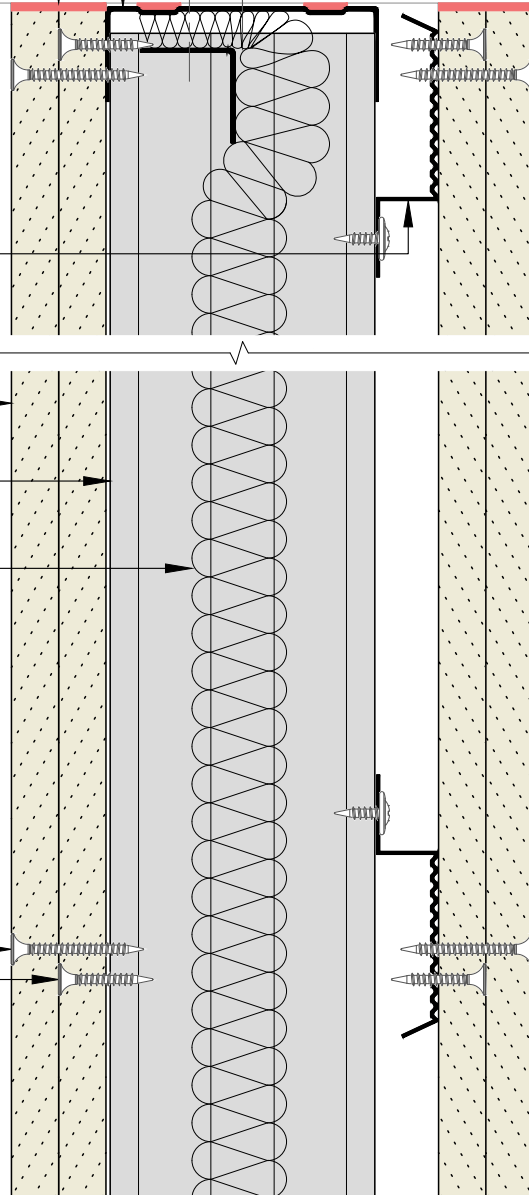
Two layers of Plasterboard to suit specification.

Hadley 'C' or 'I' Stud to suit specification.

Insulation to suit specification, hung from top of partition using Hadley 25x25mm Steel Angle, secured using suitable fixings, within 50mm of each end.

Outer layer board fixings using Hadley Drywall Screws at 300mm centres.

Inner layer board fixings using Hadley Drywall Screws at 300mm centres.



00	JUL21	First Issue	FM	JS	JS	System details to be read in conjunction with Hadley Group project specification pack. All applications to be built in accordance with British Standards, Building Regulations and Hadley Group tested solutions.
Rev:	Date:	Reason for Issue:	Drn:	Chk:	App:	

Project:

Typical System Detail  
See project specification for exact requirements

Title:

**Hadley Hush**  
Resilient Bar-One Sided  
Fixed Head



Hadley Group, Downing Street,  
Smethwick, West Midlands B66 2PA

Tel: +44 (0) 121 555 1329

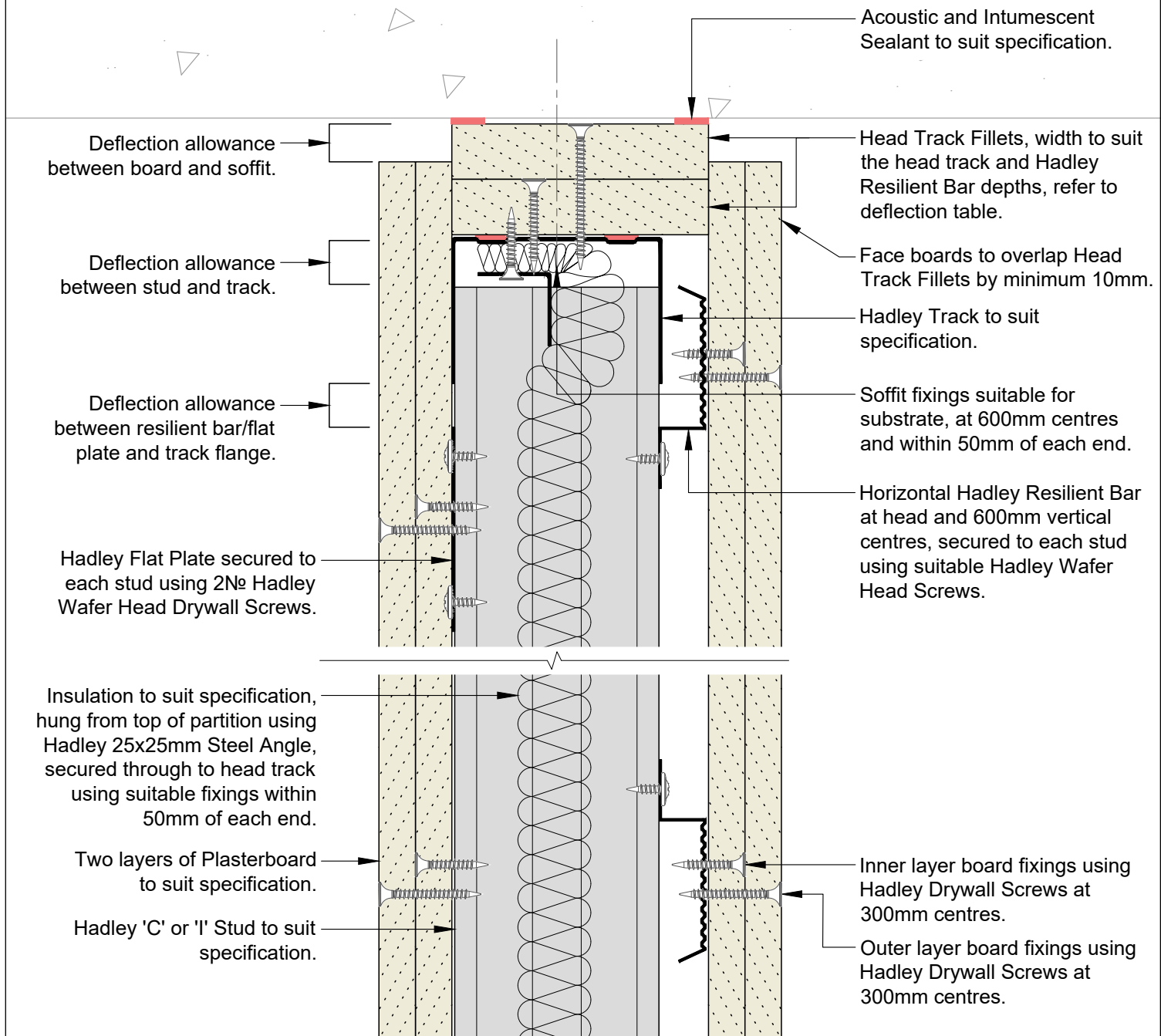
E-mail: hct@hadleygroup.co.uk

Scale:	Date:	Drawn:	Checked:	Dwg No:	Revision:
1:2 @ A4	Jul 21	FM	JS	<b>DRY-HAD-XX-ZZ-DT-X-0403</b>	<b>00</b>


All performance data and system specifications are for systems constructed with materials & components as shown. The inclusion or substitution of any other manufacturers materials or components could invalidate test data and system performance. The information is provided in good faith and is based upon details received which are assumed to include all relevant facts. No duty of care is owed to the recipient or any other third party and Hadley Industries PLC cannot accept liability in respect of the details shown. None of the content may be distributed or copied directly without prior approval.

Min. Deflection to suit structural engineer design	Min. Head Track Fillet(s)	Hadley Track Flange
5mm	1x15mm Type F Plasterboard	50mm
9mm	1x19mm CoreBoard	50mm
15mm	2x12.5mm Type F Plasterboard	50mm
20mm	2x15mm Type F Plasterboard	50mm
28mm	2x19mm CoreBoard	50mm
35mm	3x15mm Type F Plasterboard	70mm

Board Thickness	Fixing Length
≤15mm	25mm
12.5mm + 12.5mm	25mm + 38mm
12.5mm + 15mm	25mm + 38mm
15mm + 15mm	25mm + 42mm



00 JUL21 First Issue FM JS JS System details to be read in conjunction with Hadley Group project specification pack. All applications to be built in accordance with British Standards, Building Regulations and Hadley Group tested solutions.

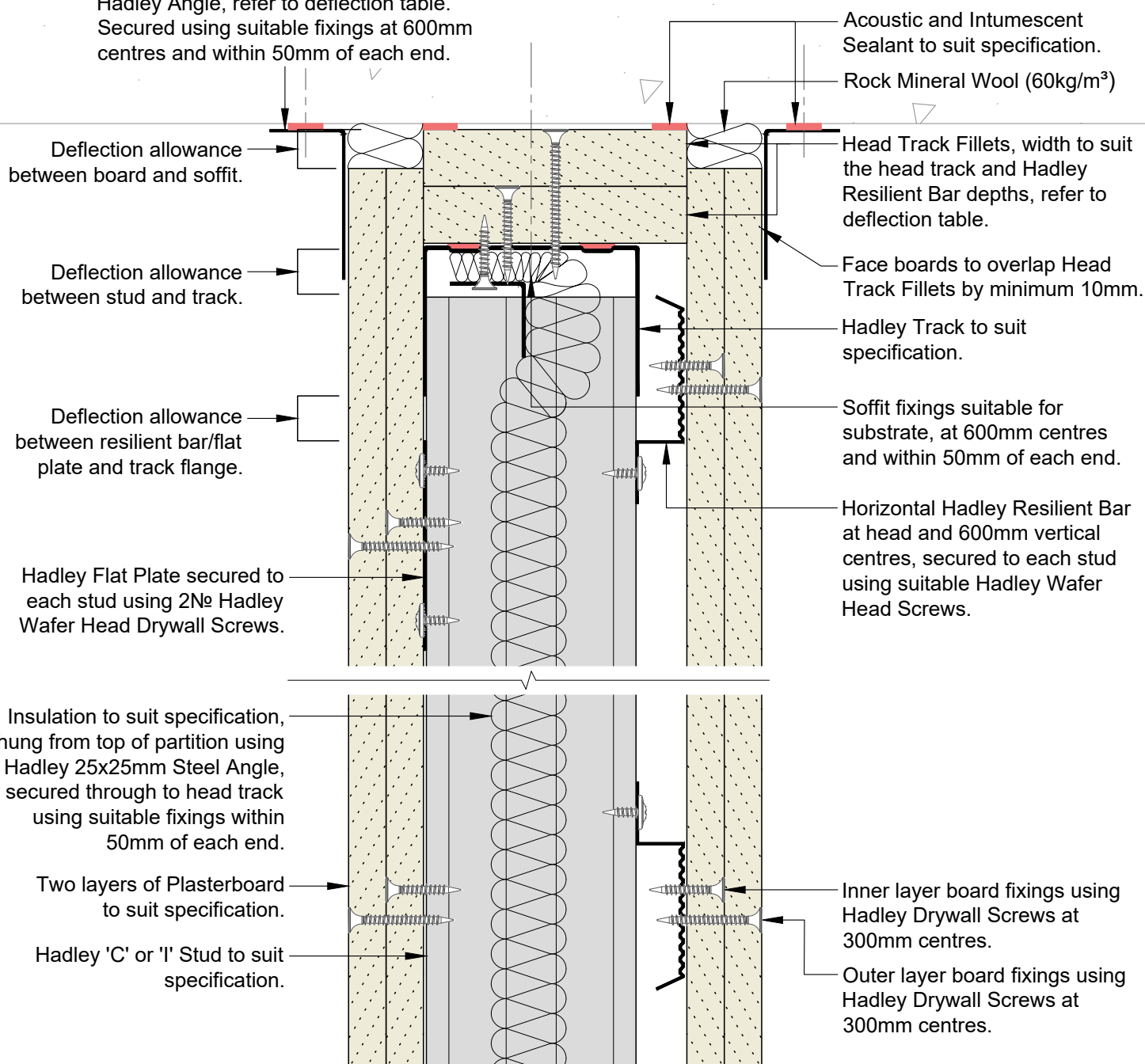
Rev:	Date:	Reason for Issue:	Drn:	Chk:	App:	Project:
						<b>Typical System Detail</b> See project specification for exact requirements
Hadley Group, Downing Street, Smethwick, West Midlands B66 2PA Tel: +44 (0) 121 555 1329 E-mail: hct@hadleygroup.co.uk						Title: <b>Hadley Hush</b> Resilient Bar-One Sided Deflection Head up to 60 mins EI Fire Resistance
Scale:	Date:	Drawn:	Checked:	Dwg No:	Revision:	
1:2 @ A4	Jul 21	FM	JS	<b>DRY-HAD-XX-ZZ-DT-X-0404</b>	<b>00</b>	

All performance data and system specifications are for systems constructed with materials & components as shown. The inclusion or substitution of any other manufacturers materials or components could invalidate test data and system performance. The information is provided in good faith and is based upon details received which are assumed to include all relevant facts. No duty of care is owed to the recipient or any other third party and Hadley Industries PLC cannot accept liability in respect of the details shown. None of the content may be distributed or copied directly without prior approval.

Min. Deflection to suit structural engineer design	Min. Head Track Fillet(s)	Hadley Track Flange	Min. Hadley Angle
5mm	1x15mm Type F Plasterboard	50mm	19x19mm
9mm	1x19mm CoreBoard	50mm	19x19mm
15mm	2x12.5mm Type F Plasterboard	50mm	25x25mm
20mm	2x15mm Type F Plasterboard	50mm	25x50mm
28mm	2x19mm CoreBoard	50mm	25x50mm
35mm	3x15mm Type F Plasterboard	70mm	25x50mm

Board Thickness	Fixing Length
≤15mm	25mm
12.5mm + 12.5mm	25mm + 38mm
12.5mm + 15mm	25mm + 38mm
15mm + 15mm	25mm + 42mm

Hadley Angle, refer to deflection table.  
Secured using suitable fixings at 600mm centres and within 50mm of each end.



00	JUL21	First Issue	FM	JS	JS	System details to be read in conjunction with Hadley Group project specification pack. All applications to be built in accordance with British Standards, Building Regulations and Hadley Group tested solutions.
Rev:	Date:	Reason for Issue:	Drn:	Chk:	App:	

Project:

Typical System Detail  
See project specification for exact requirements

Title:

**Hadley Hush**  
Resilient Bar-One Sided  
Deflection Head up to 120 mins EI Fire Resistance

Scale:	Date:	Drawn:	Checked:	Dwg No:	Revision:
1:2 @ A4	Jul 21	FM	JS	<b>DRY-HAD-XX-ZZ-DT-X-0405</b>	<b>00</b>



Hadley Group, Downing Street,  
Smethwick, West Midlands B66 2PA

Tel: +44 (0) 121 555 1329

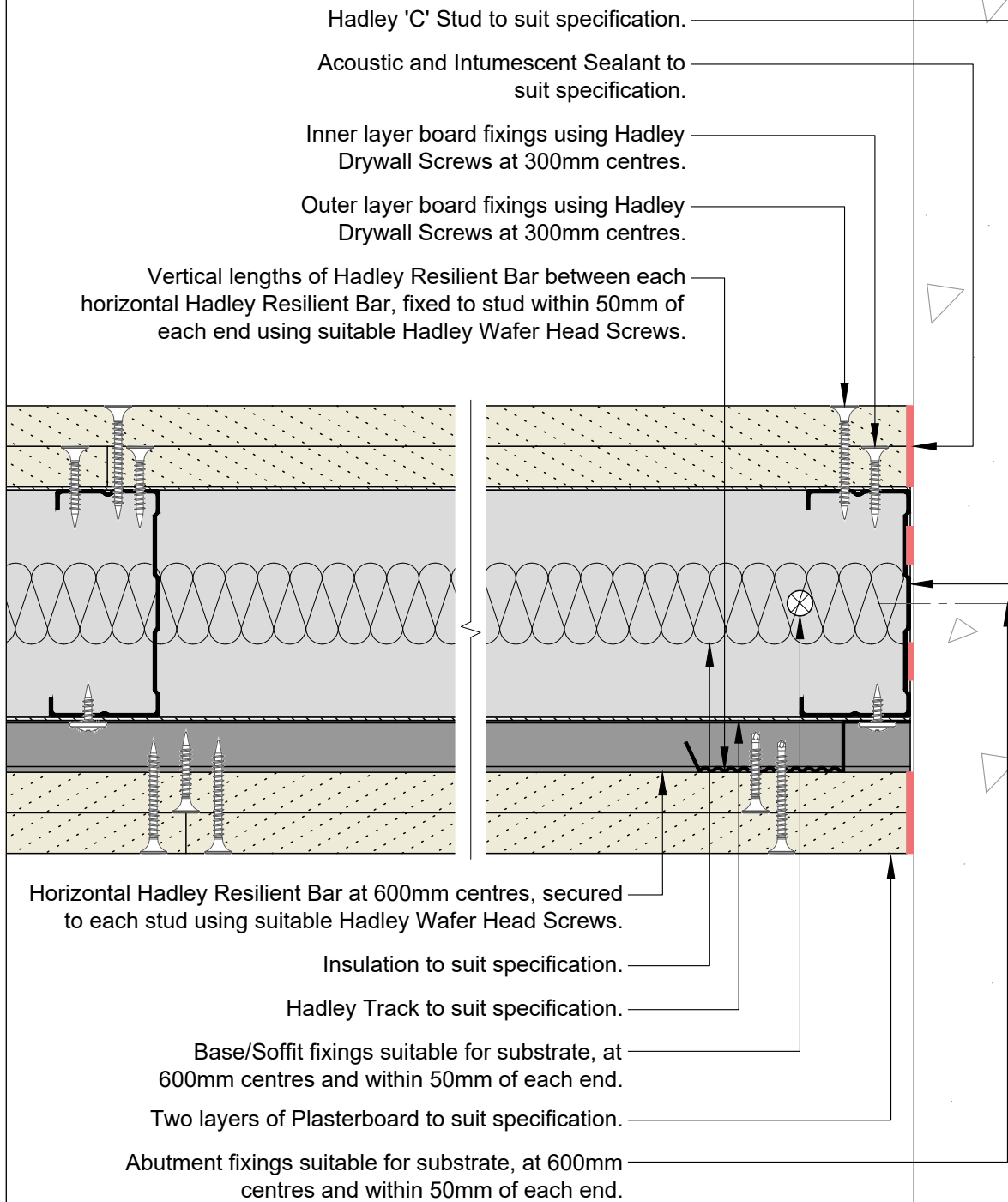
E-mail: hct@hadleygroup.co.uk

All performance data and system specifications are for systems constructed with materials & components as shown. The inclusion or substitution of any other manufacturers materials or components could invalidate test data and system performance. The information is provided in good faith and is based upon details received which are assumed to include all relevant facts. No duty of care is owed to the recipient or any other third party and Hadley Industries PLC cannot accept liability in respect of the details shown. None of the content may be distributed or copied directly without prior approval.

© 2021 Hadley Industries Holdings Limited



Board Thickness	Fixing Length
≤15mm	25mm
12.5mm + 12.5mm	25mm + 38mm
12.5mm + 15mm	25mm + 38mm
15mm + 15mm	25mm + 42mm



00	JUL21	First Issue	FM	JS	JS	System details to be read in conjunction with Hadley Group project specification pack. All applications to be built in accordance with British Standards, Building Regulations and Hadley Group tested solutions.
Rev:	Date:	Reason for Issue:	Drn:	Chk:	App:	

Project:					
Typical System Detail					
See project specification for exact requirements					
Title:					
<b>Hadley Hush</b>					
Resilient Bar-One Sided					
Abutment to Concrete/Blockwork					
Scale:	Date:	Drawn:	Checked:	Dwg No:	Revision:
1:2 @ A4	Jul 21	FM	JS	<b>DRY-HAD-XX-ZZ-DT-X-0406</b>	<b>00</b>



Hadley Group, Downing Street,  
Smethwick, West Midlands B66 2PA  
Tel: +44 (0) 121 555 1329  
E-mail: hct@hadleygroup.co.uk

All performance data and system specifications are for systems constructed with materials & components as shown. The inclusion or substitution of any other manufacturers materials or components could invalidate test data and system performance. The information is provided in good faith and is based upon details received which are assumed to include all relevant facts. No duty of care is owed to the recipient or any other third party and Hadley Industries PLC cannot accept liability in respect of the details shown. None of the content may be distributed or copied directly without prior approval.

Where abutting system is not of equal performance, fill the gap between vertical boards with acoustic and intumescent mastic, subject to confirmation from project acoustic and fire consultants.

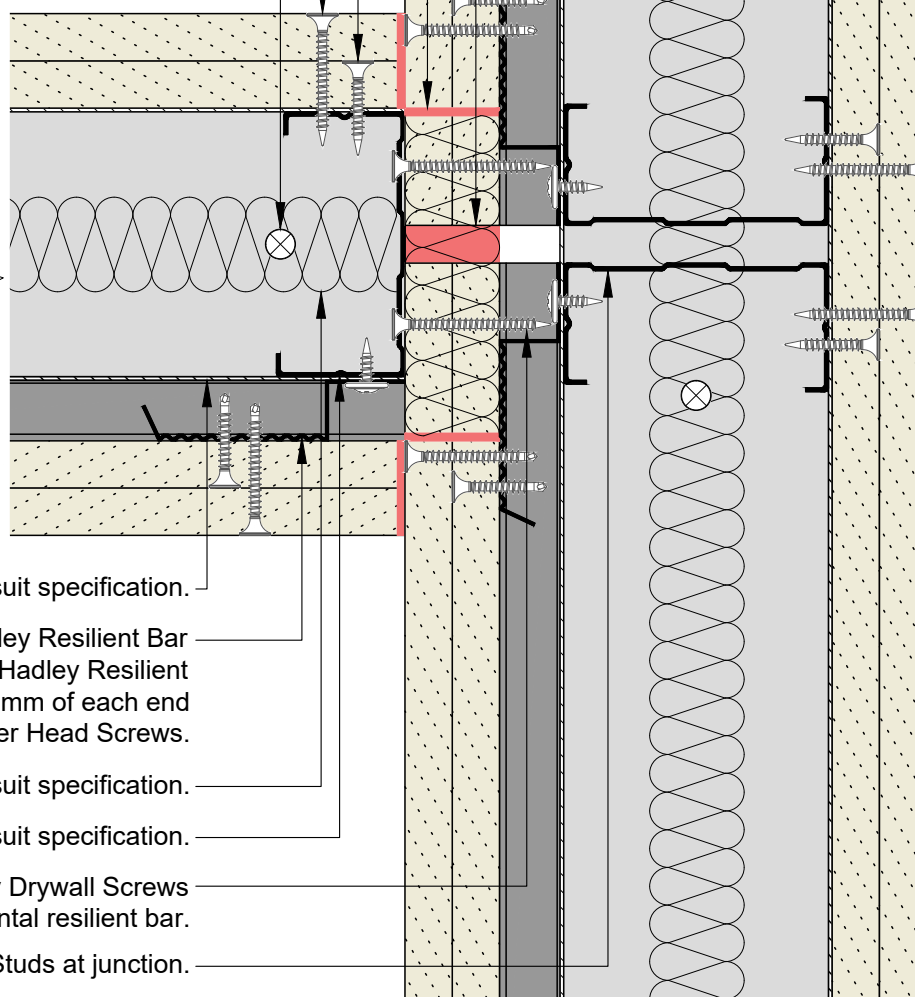
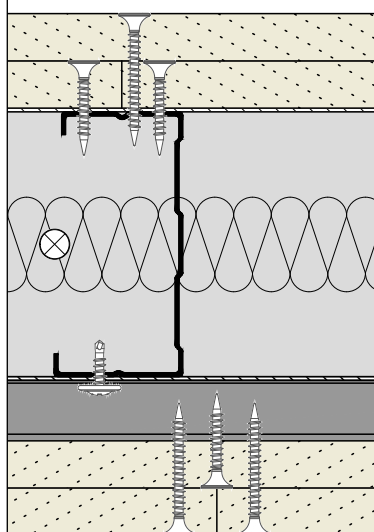
Rock Mineral Wool (60kg/m<sup>3</sup>) installed to deflection void above boards, sealed with acoustic and intumescent sealant.

Inner layer board fixings using Hadley Drywall Screws at 300mm centres.

Outer layer board fixings using Hadley Drywall Screws at 300mm centres.

Base/Soffit fixings suitable for substrate, at 600mm centres and within 50mm of each end.

Board Thickness	Fixing Length
≤15mm	25mm
12.5mm + 12.5mm	25mm + 38mm
12.5mm + 15mm	25mm + 38mm
15mm + 15mm	25mm + 42mm



Hadley Track to suit specification.

Vertical lengths of Hadley Resilient Bar between each horizontal Hadley Resilient Bar, fixed to stud within 50mm of each end using suitable Hadley Wafer Head Screws.

Insulation to suit specification.

Hadley 'C' Stud to suit specification.

Abutment fixings using Hadley Drywall Screws into each horizontal resilient bar.

Additional Hadley 'C' Studs at junction.

Two layers of plasterboard to suit specification.

System details to be read in conjunction with Hadley Group project specification pack. All applications to be built in accordance with British Standards, Building Regulations and Hadley Group tested solutions.



Hadley Group, Downing Street,  
Smethwick, West Midlands B66 2PA

Tel: +44 (0) 121 555 1329

E-mail: hct@hadleygroup.co.uk

Project:

Typical System Detail  
See project specification for exact requirements

Title:

**Hadley Hush**  
Resilient Bar-One Sided  
Abutment to Drylining Partition/Resilient Bar  
Flanking detail

Scale:

1:2 @ A4

Date:

Jul 21

Drawn:

FM

Checked:

JS

Dwg No:

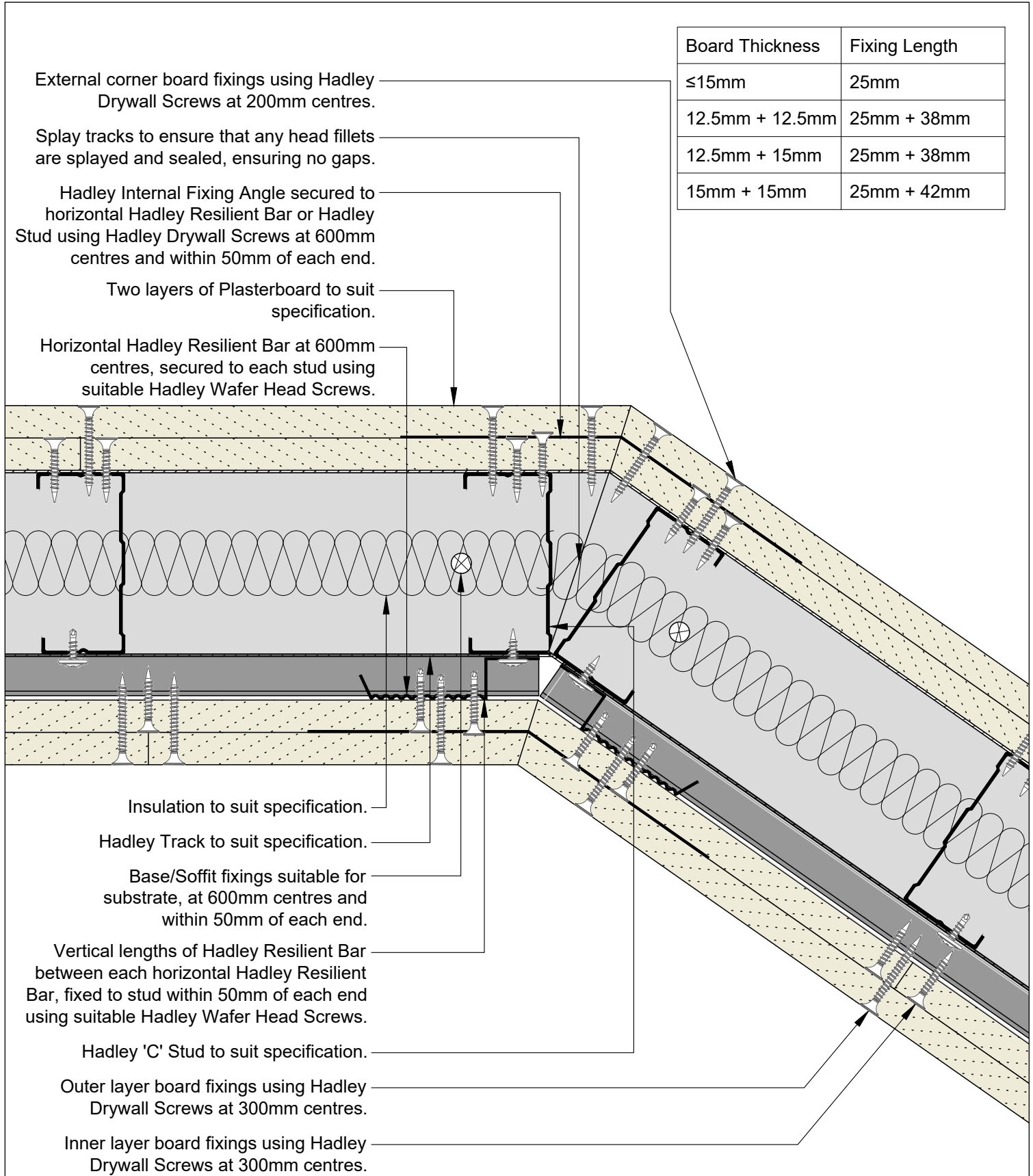
**DRY-HAD-XX-ZZ-DT-X-0407**

Revision:

**00**

All performance data and system specifications are for systems constructed with materials & components as shown. The inclusion or substitution of any other manufacturers materials or components could invalidate test data and system performance. The information is provided in good faith and is based upon details received which are assumed to include all relevant facts. No duty of care is owed to the recipient or any other third party and Hadley Industries PLC cannot accept liability in respect of the details shown. None of the content may be distributed or copied directly without prior approval.





Board Thickness	Fixing Length
≤15mm	25mm
12.5mm + 12.5mm	25mm + 38mm
12.5mm + 15mm	25mm + 38mm
15mm + 15mm	25mm + 42mm

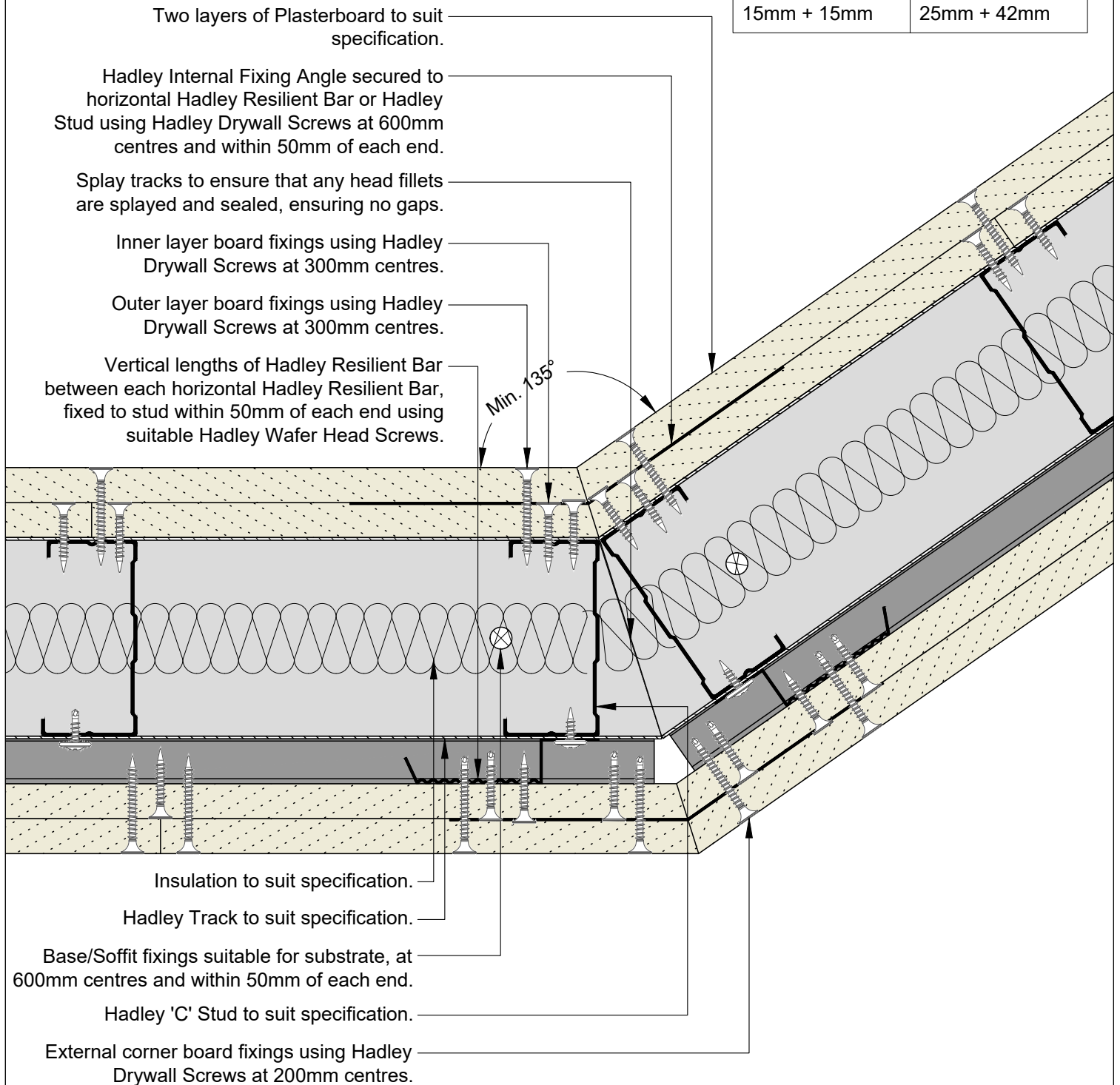
00	JUL21	First Issue	FM	JS	JS	System details to be read in conjunction with Hadley Group project specification pack. All applications to be built in accordance with British Standards, Building Regulations and Hadley Group tested solutions.
Rev:	Date:	Reason for Issue:	Drn:	Chk:	App:	

Project: Typical System Detail See project specification for exact requirements					
Title: <b>Hadley Hush</b> Resilient Bar-One Sided Splayed Corner Internal					
Scale: 1:2 @ A4	Date: Jul 21	Drawn: FM	Checked: JS	Dwg No: <b>DRY-HAD-XX-ZZ-DT-X-0408</b>	Revision: <b>00</b>



Hadley Group, Downing Street,  
Smethwick, West Midlands B66 2PA  
Tel: +44 (0) 121 555 1329  
E-mail: hct@hadleygroup.co.uk

Board Thickness	Fixing Length
≤15mm	25mm
12.5mm + 12.5mm	25mm + 38mm
12.5mm + 15mm	25mm + 38mm
15mm + 15mm	25mm + 42mm



00	JUL21	First Issue	FM	JS	JS	System details to be read in conjunction with Hadley Group project specification pack. All applications to be built in accordance with British Standards, Building Regulations and Hadley Group tested solutions.
Rev:	Date:	Reason for Issue:	Drn:	Chk:	App:	

Project:  
Typical System Detail  
See project specification for exact requirements

Title:  
**Hadley Hush**  
Resilient Bar-One Sided  
Splayed Corner External

Scale: 1:2 @ A4	Date: Jul 21	Drawn: FM	Checked: JS	Dwg No: <b>DRY-HAD-XX-ZZ-DT-X-0409</b>	Revision: <b>00</b>
--------------------	-----------------	--------------	----------------	---	------------------------



Hadley Group, Downing Street,  
Smethwick, West Midlands B66 2PA  
Tel: +44 (0) 121 555 1329  
E-mail: hct@hadleygroup.co.uk

All performance data and system specifications are for systems constructed with materials & components as shown. The inclusion or substitution of any other manufacturers materials or components could invalidate test data and system performance. The information is provided in good faith and is based upon details received which are assumed to include all relevant facts. No duty of care is owed to the recipient or any other third party and Hadley Industries PLC cannot accept liability in respect of the details shown. None of the content may be distributed or copied directly without prior approval.

Two layers of Plasterboard to suit specification.

Abutment fixings using Hadley Drywall Screws at into Hadley Stud at 600mm centres and within 50mm of each end.

Acoustic and Intumescent Sealant to suit specification.

Inner layer board fixings using Hadley Drywall Screws at 300mm centres.

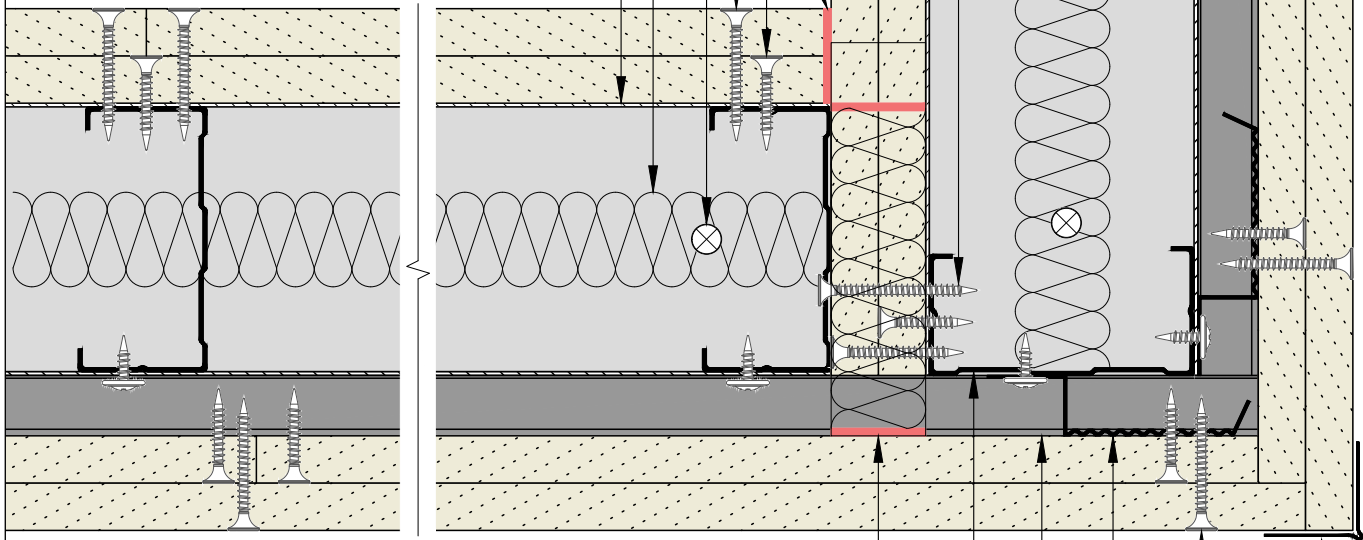
Outer layer board fixings using Hadley Drywall Screws at 300mm centres.

Base/Soffit fixings suitable for substrate, at 600mm centres and within 50mm of each end.

Insulation to suit specification.

Hadley Track to suit specification.

Board Thickness	Fixing Length
≤15mm	25mm
12.5mm + 12.5mm	25mm + 38mm
12.5mm + 15mm	25mm + 38mm
15mm + 15mm	25mm + 42mm



Rock Mineral Wool (60kg/m<sup>3</sup>) installed to deflection void above boards, sealed with Acoustic and Intumescent Sealant.

Hadley 'C' Stud to suit specification.

Ensure head track fillets extend over the resilient bars.

Vertical lengths of Hadley Resilient Bar between each horizontal Hadley Resilient Bar, fixed to stud within 50mm of each end using suitable Hadley Wafer Head Screws.

External corner fixings using Hadley Drywall Screws at 200mm centres.

Hadley Corner Bead.

00	JUL21	First Issue	FM	JS	JS	System details to be read in conjunction with Hadley Group project specification pack. All applications to be built in accordance with British Standards, Building Regulations and Hadley Group tested solutions.
Rev:	Date:	Reason for Issue:	Drn:	Chk:	App:	

Project:

Typical System Detail  
See project specification for exact requirements

Title:

**Hadley Hush**  
Resilient Bar-One Sided  
90° Corner External



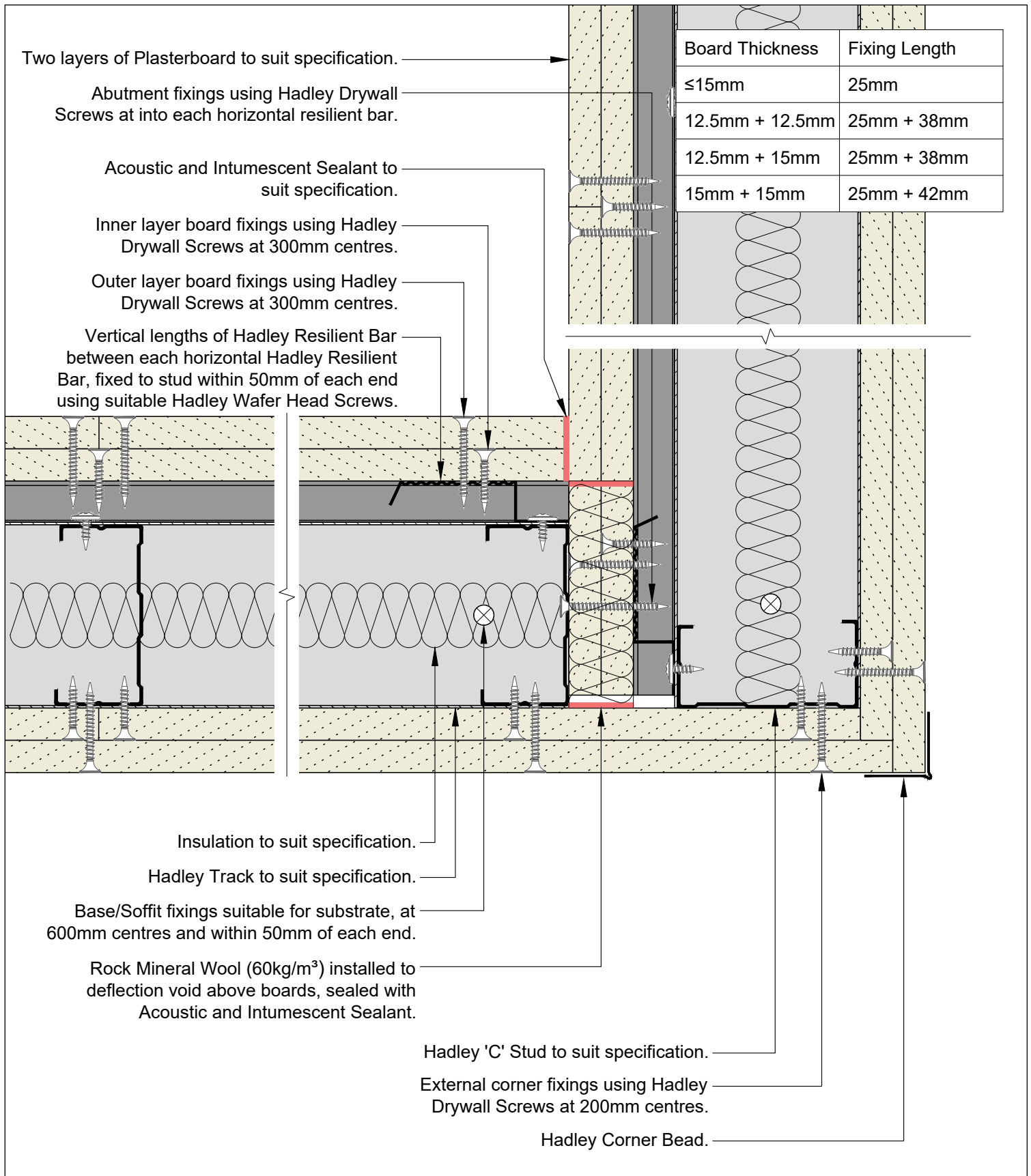
Hadley Group, Downing Street,  
Smethwick, West Midlands B66 2PA


Tel: +44 (0) 121 555 1329

E-mail: hct@hadleygroup.co.uk

Scale:	Date:	Drawn:	Checked:	Dwg No:	Revision:
1:2 @ A4	Jul 21	FM	JS	<b>DRY-HAD-XX-ZZ-DT-X-0410</b>	<b>00</b>

All performance data and system specifications are for systems constructed with materials & components as shown. The inclusion or substitution of any other manufacturers materials or components could invalidate test data and system performance. The information is provided in good faith and is based upon details received which are assumed to include all relevant facts. No duty of care is owed to the recipient or any other third party and Hadley Industries PLC cannot accept liability in respect of the details shown. None of the content may be distributed or copied directly without prior approval.



00	JUL21	First Issue	FM	JS	JS	System details to be read in conjunction with Hadley Group project specification pack. All applications to be built in accordance with British Standards, Building Regulations and Hadley Group tested solutions.				
Rev:	Date:	Reason for Issue:	Drn:	Chk:	App:					
<div><p>Hadley Group, Downing Street, Smethwick, West Midlands B66 2PA</p><p>Tel: +44 (0) 121 555 1329</p><p>E-mail: hct@hadleygroup.co.uk</p></div>						Project:				
						Typical System Detail See project specification for exact requirements				
						Title:				
						Hadley Hush Resilient Bar-One Sided 90° Corner Internal				
						Scale:		Date:		Drawn:
1:2 @ A4		Jul 21		FM	JS	DRY-HAD-XX-ZZ-DT-X-0411	00			



Hadley Group, Downing Street,  
Smethwick, West Midlands B66 2PA  
Tel: +44 (0) 121 555 1329  
E-mail: hct@hadleygroup.co.uk

Stud and track depths and gauge to suit specification.  
Fixing type to suit metalwork gauge.

Avoid outer board joint located on the door jamb.

Horizontal Hadley Resilient Bar at 600mm vertical centres,  
secured to each stud using suitable Hadley Wafer Head Screws.

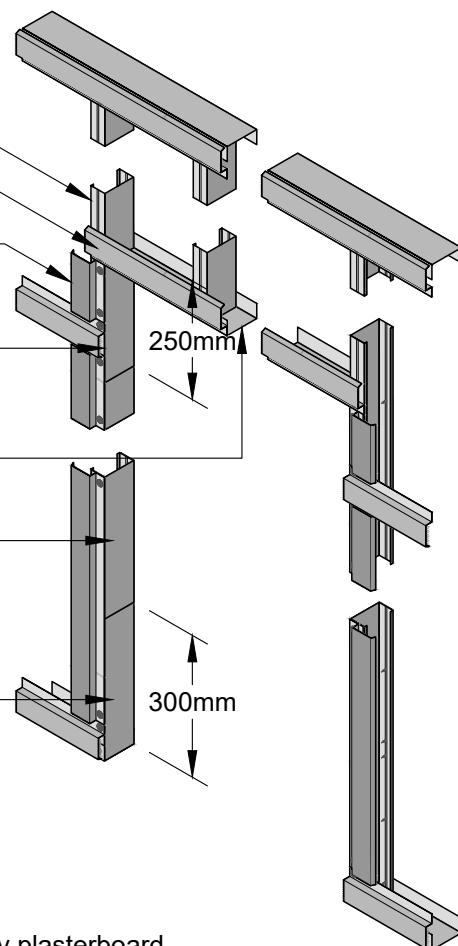
Vertical lengths of Hadley Resilient Bar between each  
horizontal Hadley Resilient Bar, fixed to stud within 50mm of  
each end using suitable Hadley Wafer Head Screws.

Hadley Track cut and bent to extend 250mm down stud, fixed  
through both flanges using 2N<sup>o</sup> Hadley Wafer Head Drywall  
Screws each side.

Hadley Track to suit specification.  
Lintel detail to suit opening width.

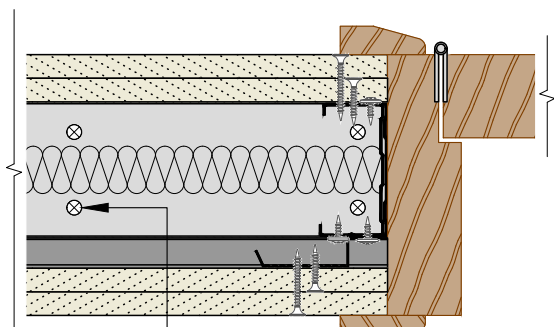
Hadley Track sleeved over stud between returned channels at  
opening head & base, fixed through both flanges using Hadley  
Wafer Head Drywall Screws at 300mm centres and within 50mm  
of each end for each side.

Hadley Track cut and bent to extend vertically 300mm, fixed  
through both flanges using 3N<sup>o</sup> Hadley Wafer Head Drywall  
Screws each side.



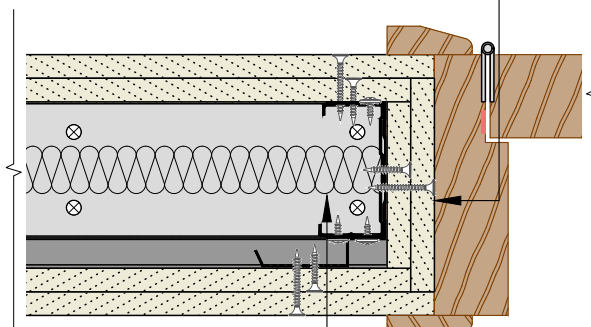
## Plan View

For fire rated openings, apply plasterboard  
as per face board specification to the reveals.



Indicative door frame and  
architraves by others.

Base track fixed with pairs of  
suitable fixings 150mm apart.



Timber fillets, omitted for  
clarity, within door jamb to suit  
door manufacturers  
application requirements and  
tested solution.

00	JUL21	First Issue	FM	JS	JS	System details to be read in conjunction with Hadley Group project specification pack. All applications to be built in accordance with British Standards, Building Regulations and Hadley Group tested solutions.
Rev:	Date:	Reason for Issue:	Drn:	Chk:	App:	

Project:

Typical System Detail  
See project specification for exact requirements

Title:

**Hadley Hush**  
Resilient Bar-One Sided  
Doorway 0-60 kg

Scale:

NTS

Date:

Jul 21

Drawn:

FM

Checked:

JS

Dwg No:

**DRY-HAD-XX-ZZ-DT-X-0412**

Revision:

**00**



Hadley Group, Downing Street,  
Smethwick, West Midlands B66 2PA

Tel: +44 (0) 121 555 1329

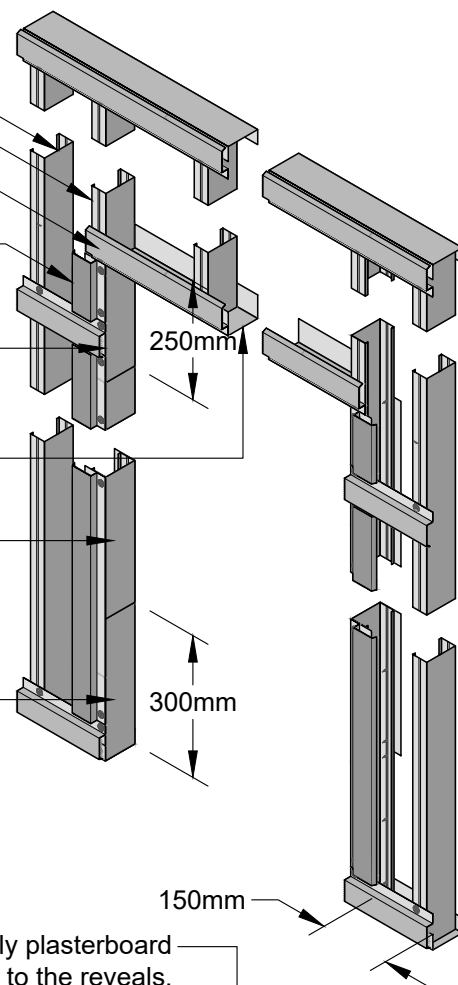
E-mail: hct@hadleygroup.co.uk

All performance data and system specifications are for systems constructed with materials & components as shown. The inclusion or substitution of any other manufacturers materials or components could invalidate test data and system performance. The information is provided in good faith and is based upon details received which are assumed to include all relevant facts. No duty of care is owed to the recipient or any other third party and Hadley Industries PLC cannot accept liability in respect of the details shown. None of the content may be distributed or copied directly without prior approval.



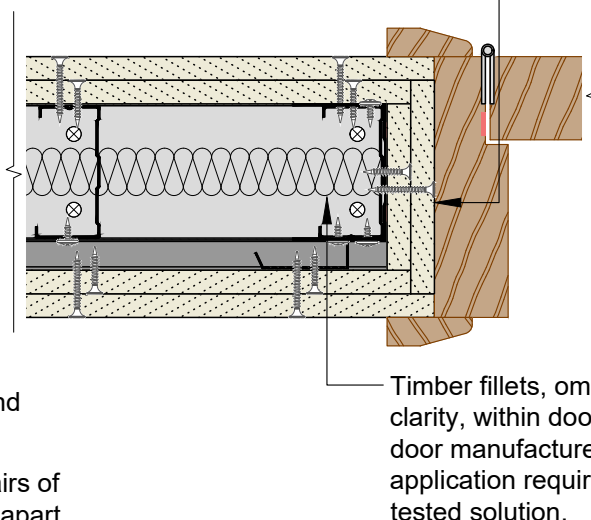
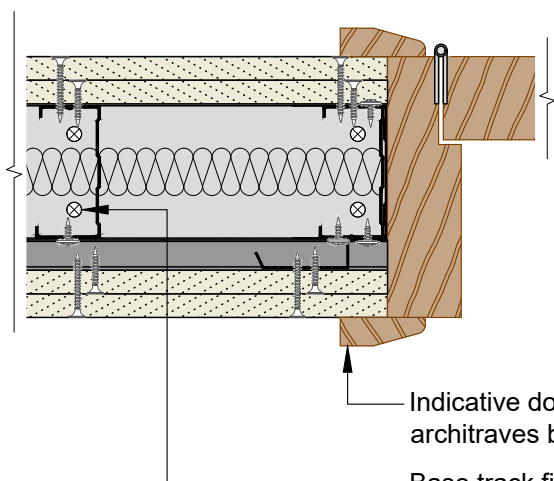
Stud and track depths and gauge to suit specification.  
Fixing type to suit metalwork gauge.

- Additional Hadley Stud located up to 150mm from jamb stud.
- Avoid outer board joint located on the door jamb.
- Horizontal Hadley Resilient Bar at 600mm vertical centres, secured to each stud using suitable Hadley Wafer Head Screws.
- Vertical lengths of Hadley Resilient Bar between each horizontal Hadley Resilient Bar, fixed to stud within 50mm of each end using suitable Hadley Wafer Head Screws.
- Hadley Track cut and bent to extend 250mm down stud, fixed through both flanges using 2Nø Hadley Wafer Head Drywall Screws each side.
- Hadley Track to suit specification. Lintel detail to suit opening width.
- Hadley Track sleeved over stud between returned channels at opening head & base, fixed through both flanges using Hadley Wafer Head Drywall Screws at 300mm centres and within 50mm of each end for each side.
- Hadley Track cut and bent to extend vertically 300mm, fixed through both flanges using 3Nø Hadley Wafer Head Drywall Screws each side.



## Plan View

For fire rated openings, apply plasterboard as per face board specification to the reveals.



Indicative door frame and architraves by others.  
Base track fixed with pairs of suitable fixings 150mm apart.

Timber fillets, omitted for clarity, within door jamb to suit door manufacturers application requirements and tested solution.

00	JUL21	First Issue	FM	JS	JS	System details to be read in conjunction with Hadley Group project specification pack. All applications to be built in accordance with British Standards, Building Regulations and Hadley Group tested solutions.
Rev:	Date:	Reason for Issue:	Drm:	Chk:	App:	

Project:

Typical System Detail  
See project specification for exact requirements

Title:

**Hadley Hush**  
Resilient Bar-One Sided  
Doorway 61-100 kg

Scale:

NTS

Date:

Jul 21

Drawn:

FM

Checked:

JS

Dwg No:

**DRY-HAD-XX-ZZ-DT-X-0413**

Revision:

**00**



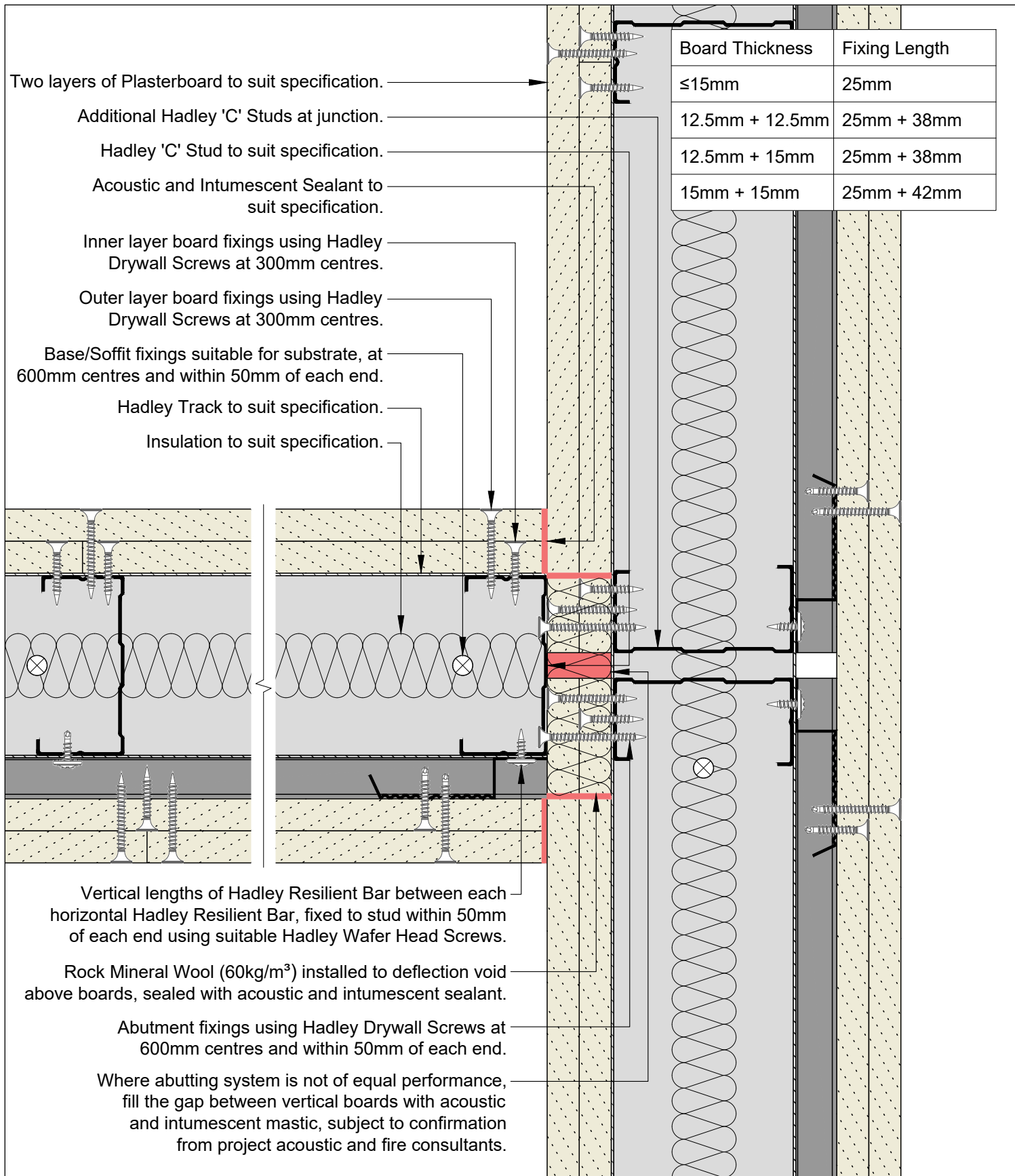
Hadley Group, Downing Street,  
Smethwick, West Midlands B66 2PA

Tel: +44 (0) 121 555 1329


E-mail: hct@hadleygroup.co.uk

All performance data and system specifications are for systems constructed with materials & components as shown. The inclusion or substitution of any other manufacturers materials or components could invalidate test data and system performance. The information is provided in good faith and is based upon details received which are assumed to include all relevant facts. No duty of care is owed to the recipient or any other third party and Hadley Industries PLC cannot accept liability in respect of the details shown. None of the content may be distributed or copied directly without prior approval.





00 JUL21 First Issue FM JS JS System details to be read in conjunction with Hadley Group project specification pack. All applications to be built in accordance with British Standards, Building Regulations and Hadley Group tested solutions.



Hadley Group, Downing Street,  
Smethwick, West Midlands B66 2PA  
Tel: +44 (0) 121 555 1329  
E-mail: hct@hadleygroup.co.uk

Project: Typical System Detail  
See project specification for exact requirements

Title: **Hadley Hush**  
Resilient Bar-One Sided  
Abutment to Drylining Partition/Stud  
Flanking detail

Scale: 1:2 @ A4	Date: Jul 21	Drawn: FM	Checked: JS	Dwg No: <b>DRY-HAD-XX-ZZ-DT-X-0414</b>	Revision: <b>00</b>
-----------------	--------------	-----------	-------------	--	---------------------

All performance data and system specifications are for systems constructed with materials & components as shown. The inclusion or substitution of any other manufacturers materials or components could invalidate test data and system performance. The information is provided in good faith and is based upon details received which are assumed to include all relevant facts. No duty of care is owed to the recipient or any other third party and Hadley Industries PLC cannot accept liability in respect of the details shown. None of the content may be distributed or copied directly without prior approval.