

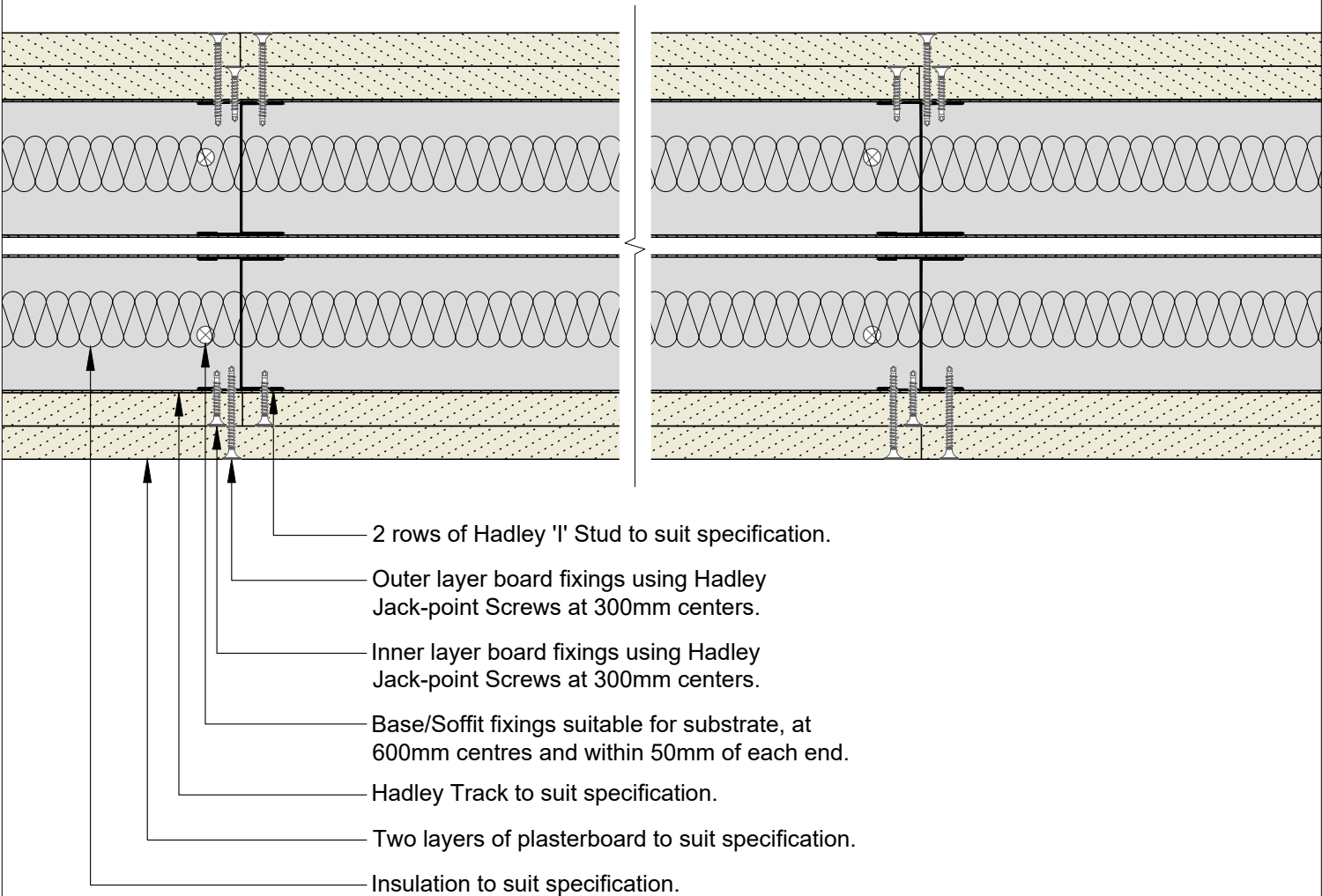
# Hadley DRYLINING


## Standard Details

### Hadley DUO – Drawings



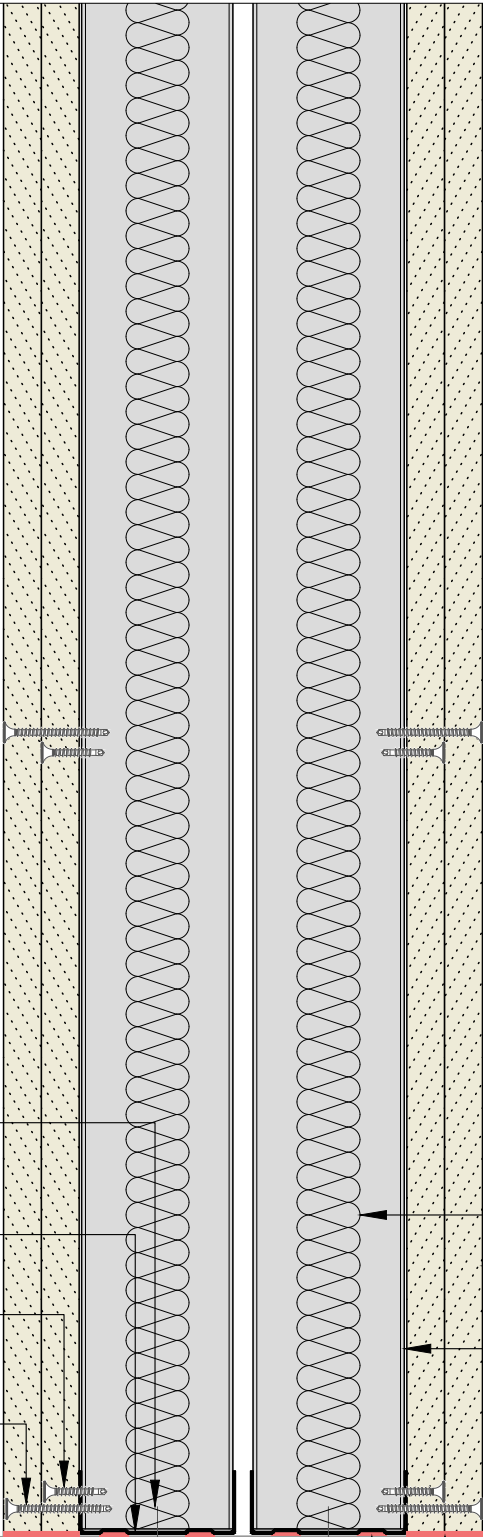
Board Thickness	Fixing Length
≤15mm	25mm
12.5mm + 12.5mm	25mm + 38mm
12.5mm + 15mm	25mm + 38mm
15mm + 15mm	25mm + 42mm



00	JUL21	First Issue	FM	JS	JS	System details to be read in conjunction with Hadley Group project specification pack. All applications to be built in accordance with British Standards, Building Regulations and Hadley Group tested solutions.
Rev:	Date:	Reason for Issue:	Drn:	Chk:	App:	
<div>  <div> <div>Hadley Group, Downing Street, Smethwick, West Midlands B66 2PA</div> <div>           Tel: +44 (0) 121 555 1329            E-mail: hct@hadleygroup.co.uk         </div> </div> </div>						Project:
						Typical System Detail See project specification for exact requirements
						Title: <b>Hadley Duo</b> Partition - Twin Frame IWL Plan
						<div> <div>Scale: 1:3 @ A4</div> <div>Date: Jul 21</div> <div>Drawn: FM</div> <div>Checked: JS</div> <div>Dwg No: <b>DRY-HAD-XX-ZZ-DT-X-0301</b></div> <div>Revision: <b>00</b></div> </div>

All performance data and system specifications are for systems constructed with materials & components as shown. The inclusion or substitution of any other manufacturers materials or components could invalidate test data and system performance. The information is provided in good faith and is based upon details received which are assumed to include all relevant facts. No duty of care is owed to the recipient or any other third party and Hadley Industries Holdings Ltd cannot accept liability in respect of the details shown. None of the content may be distributed or copied directly without prior approval.

Board Thickness	Fixing Length
≤15mm	25mm
12.5mm + 12.5mm	25mm + 38mm
12.5mm + 15mm	25mm + 38mm
15mm + 15mm	25mm + 42mm



Base fixings suitable for substrate, at 600mm centres and within 50mm of each end.

Hadley Track to suit specification.

Inner layer board fixings using Hadley Drywall Screws at 300mm centres.

Outer layer board fixings using Hadley Drywall Screws at 300mm centres.

Insulation to suit specification.  
Two layers of plasterboard to suit specification.  
2 rows of Hadley 'I' Stud to suit specification.

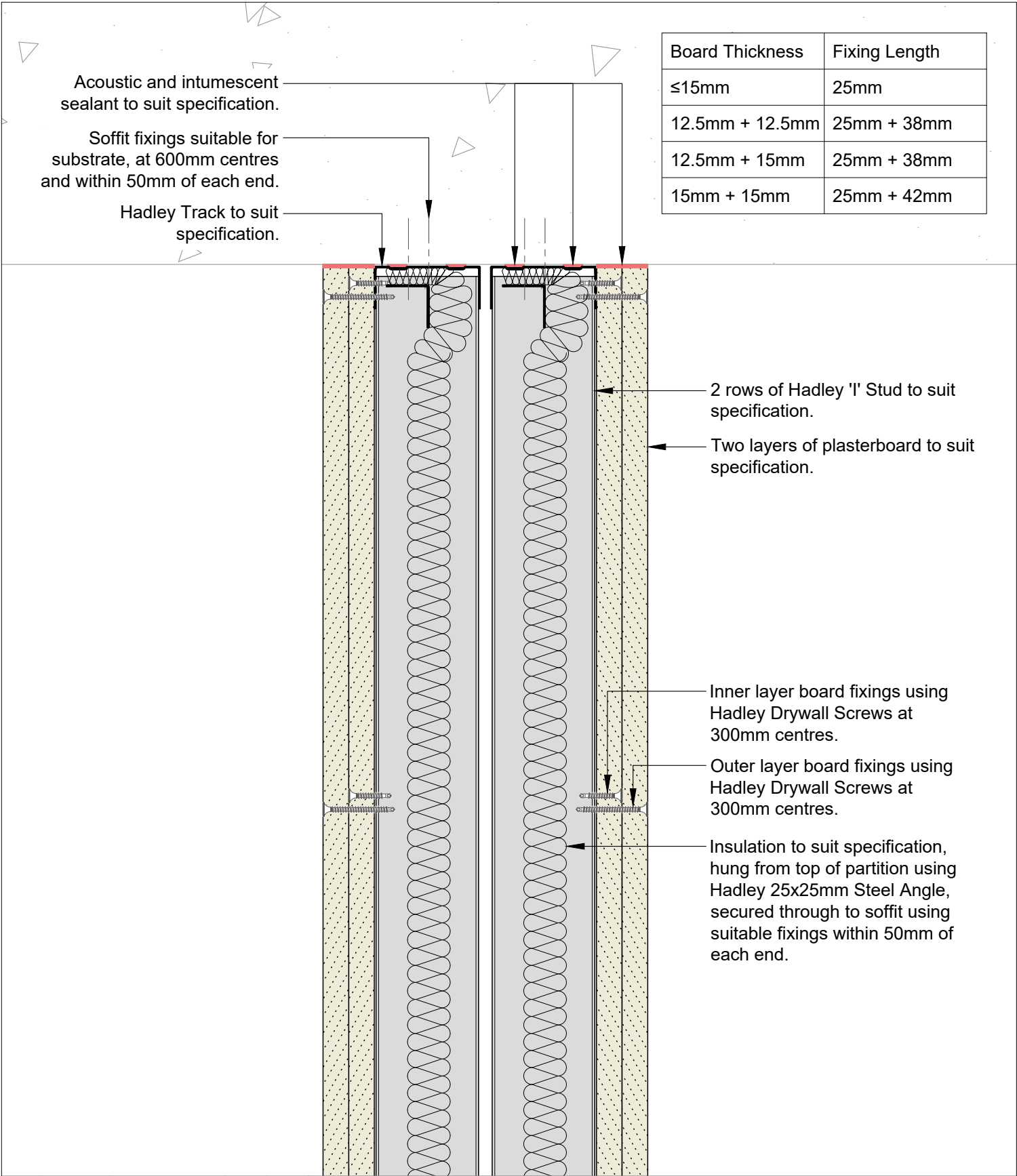
Acoustic and intumescent sealant to suit specification.

00	JUL21	First Issue	FM	JS	JS	System details to be read in conjunction with Hadley Group project specification pack. All applications to be built in accordance with British Standards, Building Regulations and Hadley Group tested solutions.
Rev:	Date:	Reason for Issue:	Drn:	Chk:	App:	

Project: Typical System Detail See project specification for exact requirements					
Title: <b>Hadley Duo</b> Partition - Twin Frame IWL Base					
Scale: 1:3 @ A4	Date: Jul 21	Drawn: FM	Checked: JS	Dwg No: <b>DRY-HAD-XX-ZZ-DT-X-0302</b>	Revision: <b>00</b>



Hadley Group, Downing Street,  
Smethwick, West Midlands B66 2PA  
Tel: +44 (0) 121 555 1329  
E-mail: hct@hadleygroup.co.uk



00	JUL21	First Issue	FM	JS	JS	System details to be read in conjunction with Hadley Group project specification pack. All applications to be built in accordance with British Standards, Building Regulations and Hadley Group tested solutions.
Rev:	Date:	Reason for Issue:	Drn:	Chk:	App:	

Project:  
Typical System Detail  
See project specification for exact requirements

Title:  
**Hadley Duo**  
Partition - Twin Frame IWL  
Fixed Head



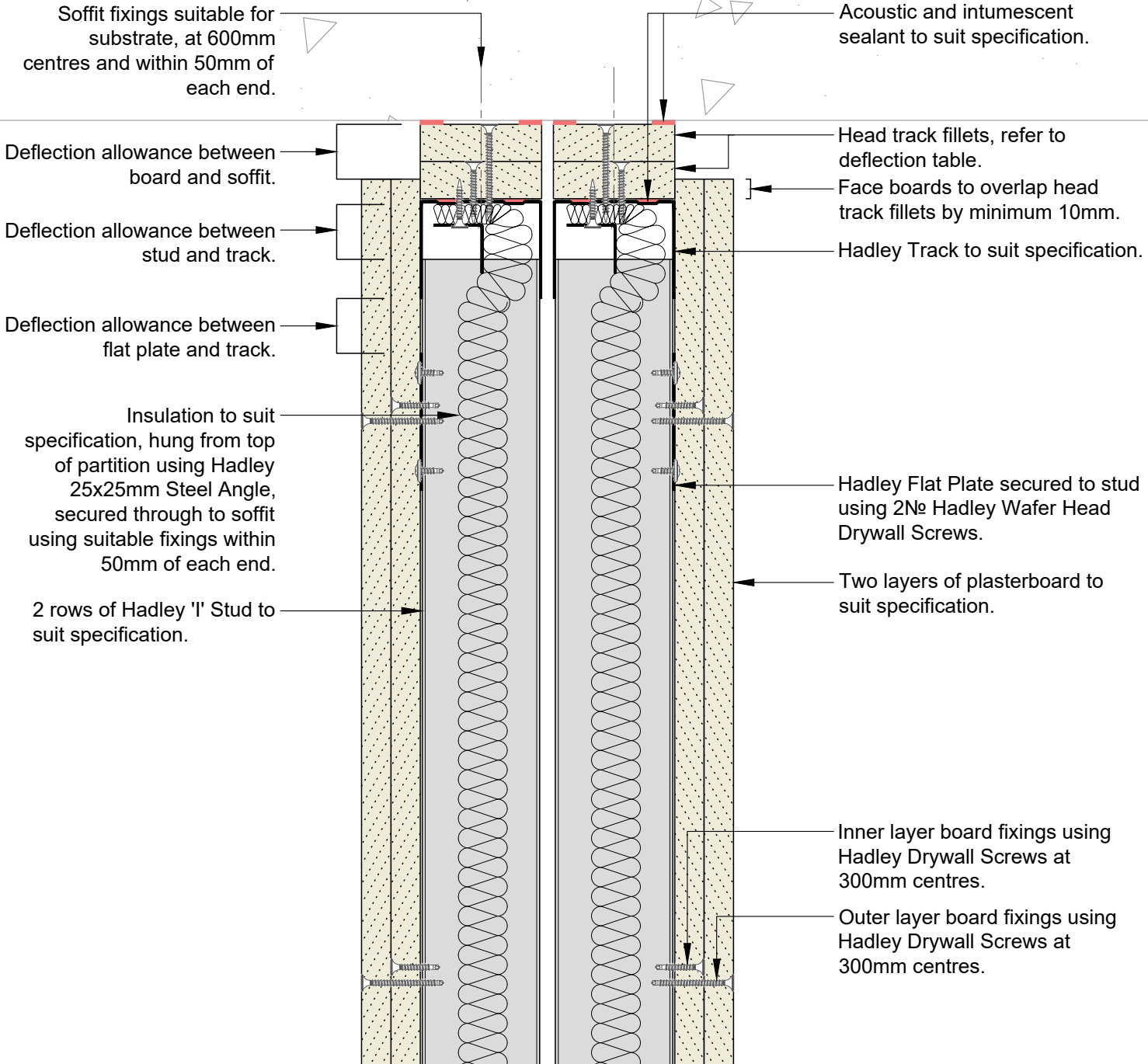
Hadley Group, Downing Street,  
Smethwick, West Midlands B66 2PA  
Tel: +44 (0) 121 555 1329  
E-mail: hct@hadleygroup.co.uk

Scale: 1:3 @ A4	Date: Jul 21	Drawn: FM	Checked: JS	Dwg No: <b>DRY-HAD-XX-ZZ-DT-X-0303</b>	Revision: <b>00</b>
--------------------	-----------------	--------------	----------------	---	------------------------

All performance data and system specifications are for systems constructed with materials & components as shown. The inclusion or substitution of any other manufacturers materials or components could invalidate test data and system performance. The information is provided in good faith and is based upon details received which are assumed to include all relevant facts. No duty of care is owed to the recipient or any other third party and Hadley Industries Holdings Ltd cannot accept liability in respect of the details shown. None of the content may be distributed or copied directly without prior approval.

Min. Deflection to suit structural engineer design	Min. Head Track Fillet(s)	Hadley Track Flange
5mm	1x15mm Type F Plasterboard	50mm
9mm	1x19mm CoreBoard	50mm
15mm	2x12.5mm Type F Plasterboard	50mm
20mm	2x15mm Type F Plasterboard	50mm
28mm	2x19mm CoreBoard	50mm
35mm	3x15mm Type F Plasterboard	70mm

Board Thickness	Fixing Length
≤15mm	25mm
12.5mm + 12.5mm	25mm + 38mm
12.5mm + 15mm	25mm + 38mm
15mm + 15mm	25mm + 42mm



00	JUL21	First Issue	FM	JS	JS	System details to be read in conjunction with Hadley Group project specification pack. All applications to be built in accordance with British Standards, Building Regulations and Hadley Group tested solutions.
Rev:	Date:	Reason for Issue:	Drn:	Chk:	App:	

Project:					
Typical System Detail					
See project specification for exact requirements					
Title:					
Hadley Duo					
Partition - Twin Frame IWL					
Deflection Head up to 60 min EI Fire Resistance					

Scale:	Date:	Drawn:	Checked:	Dwg No:	Revision:
1:3 @ A4	Jul 21	FM	JS	DRY-HAD-XX-ZZ-DT-X-0304	00



Hadley Group, Downing Street,  
Smethwick, West Midlands B66 2PA

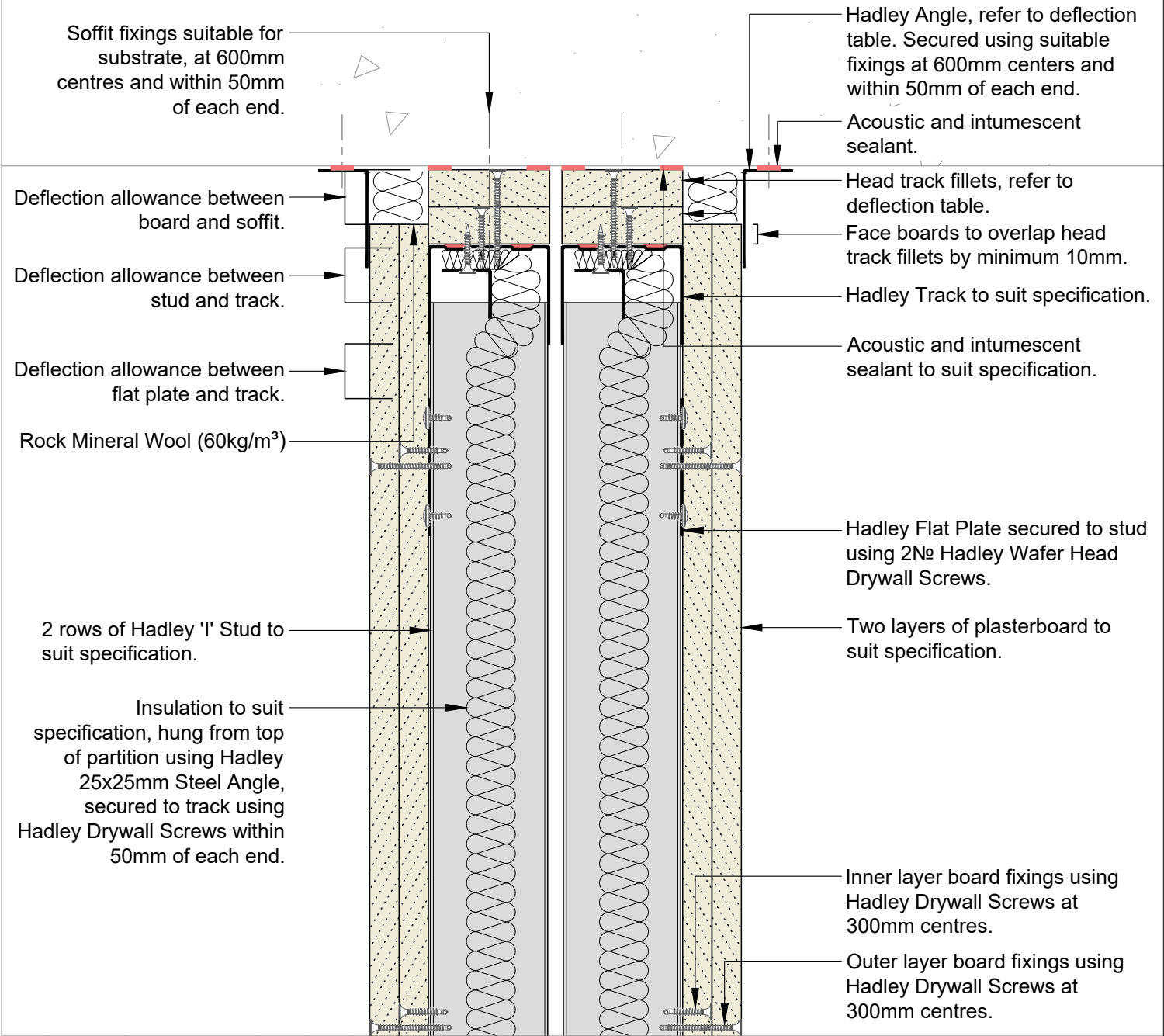
Tel: +44 (0) 121 555 1329

E-mail: hct@hadleygroup.co.uk




Min. Deflection to suit structural engineer design	Min. Head Track Fillet(s)	Hadley Track Flange	Min. Hadley Angle
5mm	1x15mm Type F Plasterboard	50mm	19x19mm
9mm	1x19mm CoreBoard	50mm	19x19mm
15mm	2x12.5mm Type F Plasterboard	50mm	25x25mm
20mm	2x15mm Type F Plasterboard	50mm	25x50mm
28mm	2x19mm CoreBoard	50mm	25x50mm
35mm	3x15mm Type F Plasterboard	70mm	25x50mm

Board Thickness	Fixing Length
≤15mm	25mm
12.5mm + 12.5mm	25mm + 38mm
12.5mm + 15mm	25mm + 38mm
15mm + 15mm	25mm + 42mm

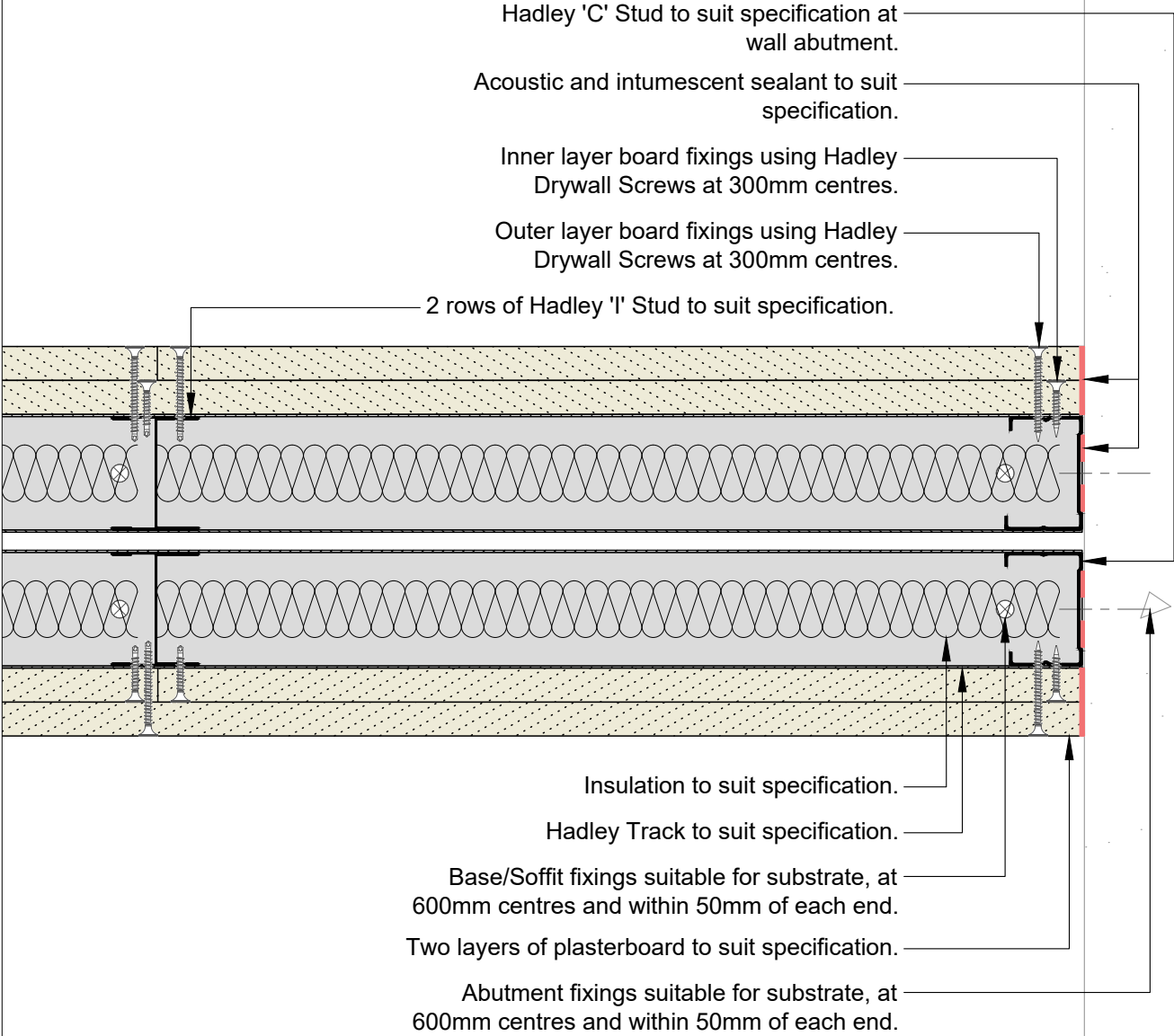



00	JUL21	First Issue	FM	JS	JS	System details to be read in conjunction with Hadley Group project specification pack. All applications to be built in accordance with British Standards, Building Regulations and Hadley Group tested solutions.
Rev:	Date:	Reason for Issue:	Drn:	Chk:	App:	

<div>  <p>Hadley Group, Downing Street, Smethwick, West Midlands B66 2PA</p> <p>Tel: +44 (0) 121 555 1329</p> <p>E-mail: hct@hadleygroup.co.uk</p> </div>						Project: Typical System Detail See project specification for exact requirements
<div> <p>Title:</p> <p><b>Hadley Duo</b></p> <p>Partition - Twin Frame IWL</p> <p>Deflection Head up to 120 min (EI)</p> </div>						
Scale:	Date:	Drawn:	Checked:	Dwg No:	Revision:	
1:3 @ A4	Jul 21	FM	JS	<b>DRY-HAD-XX-ZZ-DT-X-0305</b>	<b>00</b>	

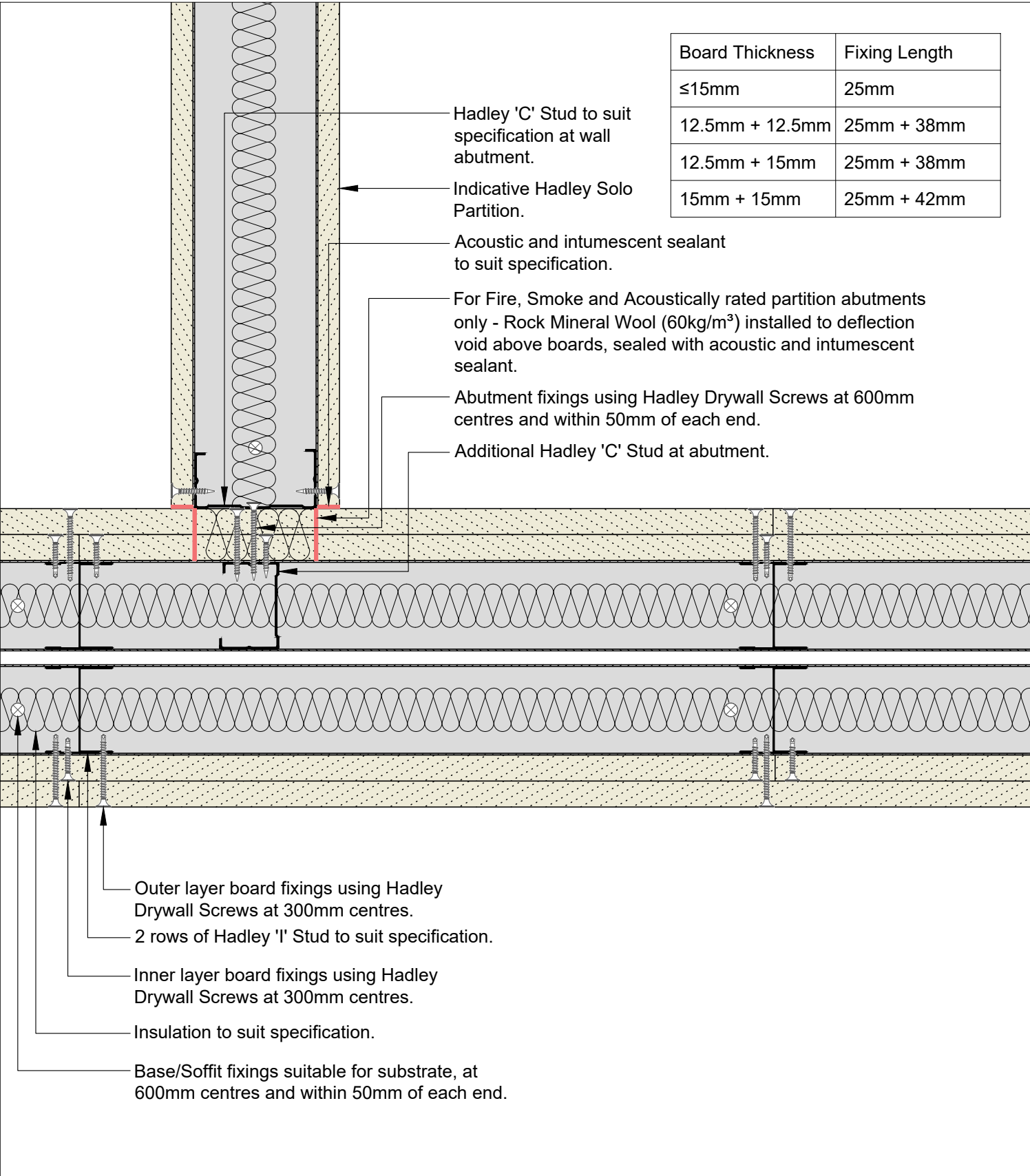
All performance data and system specifications are for systems constructed with materials & components as shown. The inclusion or substitution of any other manufacturers materials or components could invalidate test data and system performance. The information is provided in good faith and is based upon details received which are assumed to include all relevant facts. No duty of care is owed to the recipient or any other third party and Hadley Industries Holdings Ltd cannot accept liability in respect of the details shown. None of the content may be distributed or copied directly without prior approval.

Board Thickness	Fixing Length
≤15mm	25mm
12.5mm + 12.5mm	25mm + 38mm
12.5mm + 15mm	25mm + 38mm
15mm + 15mm	25mm + 42mm




00	JUL21	First Issue	FM	JS	JS	System details to be read in conjunction with Hadley Group project specification pack. All applications to be built in accordance with British Standards, Building Regulations and Hadley Group tested solutions.
Rev:	Date:	Reason for Issue:	Drn:	Chk:	App:	
<div>  <div> <div>Hadley Group, Downing Street, Smethwick, West Midlands B66 2PA</div> <div>           Tel: +44 (0) 121 555 1329            E-mail: hct@hadleygroup.co.uk         </div> </div> </div>						Project:
						Typical System Detail See project specification for exact requirements
						Title: <b>Hadley Duo</b> Partition - Twin Frame IWL Abutment to Concrete/Blockwork
Scale:		Date:	Drawn:	Checked:	Dwg No:	Revision:
1:3 @ A4		Jul 21	FM	JS	<b>DRY-HAD-XX-ZZ-DT-X-0306</b>	<b>00</b>

All performance data and system specifications are for systems constructed with materials & components as shown. The inclusion or substitution of any other manufacturers materials or components could invalidate test data and system performance. The information is provided in good faith and is based upon details received which are assumed to include all relevant facts. No duty of care is owed to the recipient or any other third party and Hadley Industries Holdings Ltd cannot accept liability in respect of the details shown. None of the content may be distributed or copied directly without prior approval.



00	JUL21	First Issue	FM	JS	JS	System details to be read in conjunction with Hadley Group project specification pack. All applications to be built in accordance with British Standards, Building Regulations and Hadley Group tested solutions.
Rev:	Date:	Reason for Issue:	Drm:	Chk:	App:	



Hadley Group, Downing Street,  
Smethwick, West Midlands B66 2PA  
Tel: +44 (0) 121 555 1329  
E-mail: hct@hadleygroup.co.uk

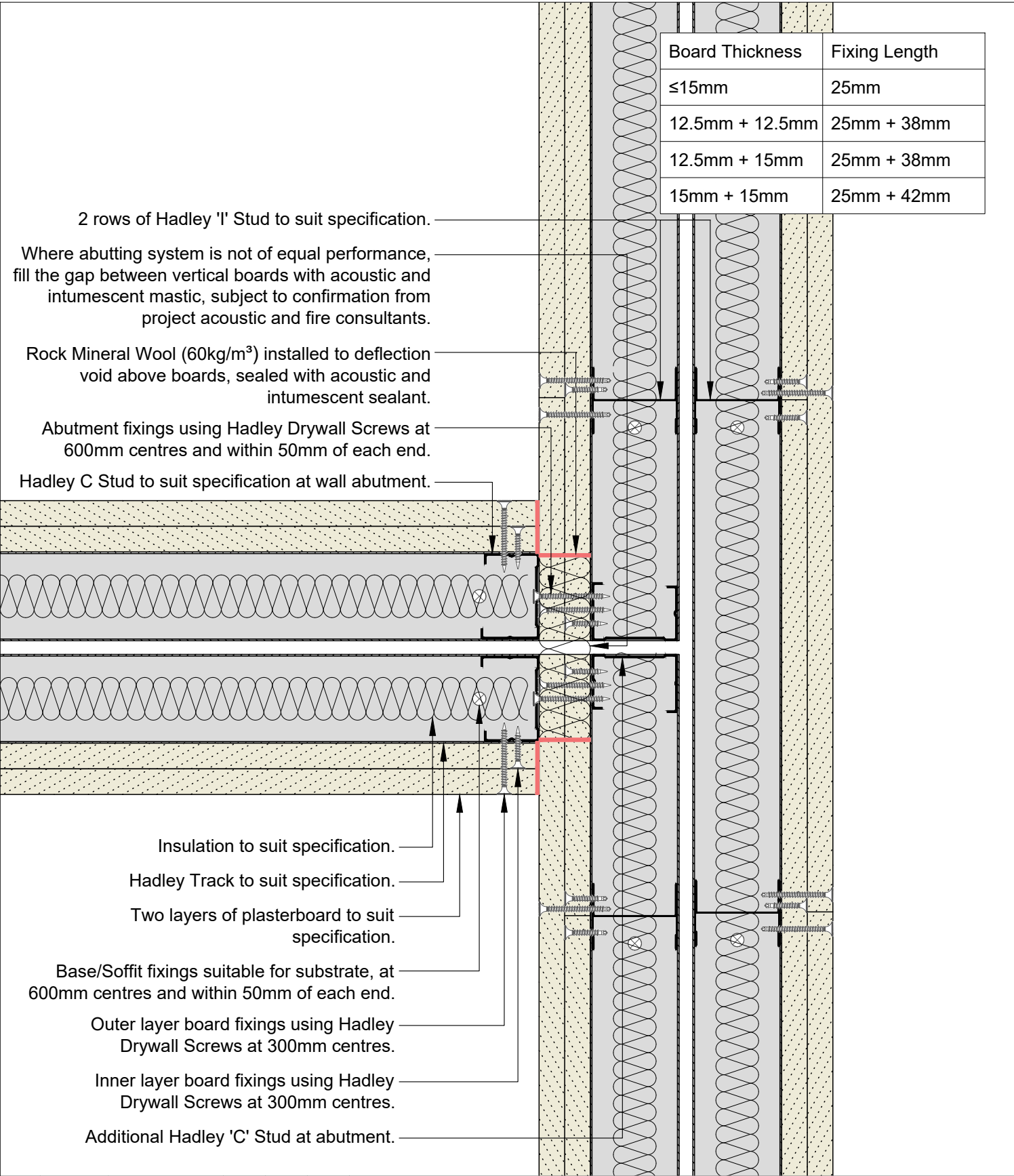
Project:  
Typical System Detail  
See project specification for exact requirements

Title:  
**Hadley Duo**  
Partition - Twin Frame IWL  
Abutment to Drylining Partition

Scale: 1:3 @ A4	Date: Jul 21	Drawn: FM	Checked: JS	Dwg No: <b>DRY-HAD-XX-ZZ-DT-X-0307</b>	Revision: <b>00</b>
--------------------	-----------------	--------------	----------------	---	------------------------


All performance data and system specifications are for systems constructed with materials & components as shown. The inclusion or substitution of any other manufacturers materials or components could invalidate test data and system performance. The information is provided in good faith and is based upon details received which are assumed to include all relevant facts. No duty of care is owed to the recipient or any other third party and Hadley Industries Holdings Ltd cannot accept liability in respect of the details shown. None of the content may be distributed or copied directly without prior approval.





00 JUL21 First Issue FM JS JS System details to be read in conjunction with Hadley Group project specification pack. All applications to be built in accordance with British Standards, Building Regulations and Hadley Group tested solutions.

Rev: Date: Reason for Issue: Drn: Chk: App: Project:



Hadley Group, Downing Street,  
Smethwick, West Midlands B66 2PA  
Tel: +44 (0) 121 555 1329  
E-mail: hct@hadleygroup.co.uk

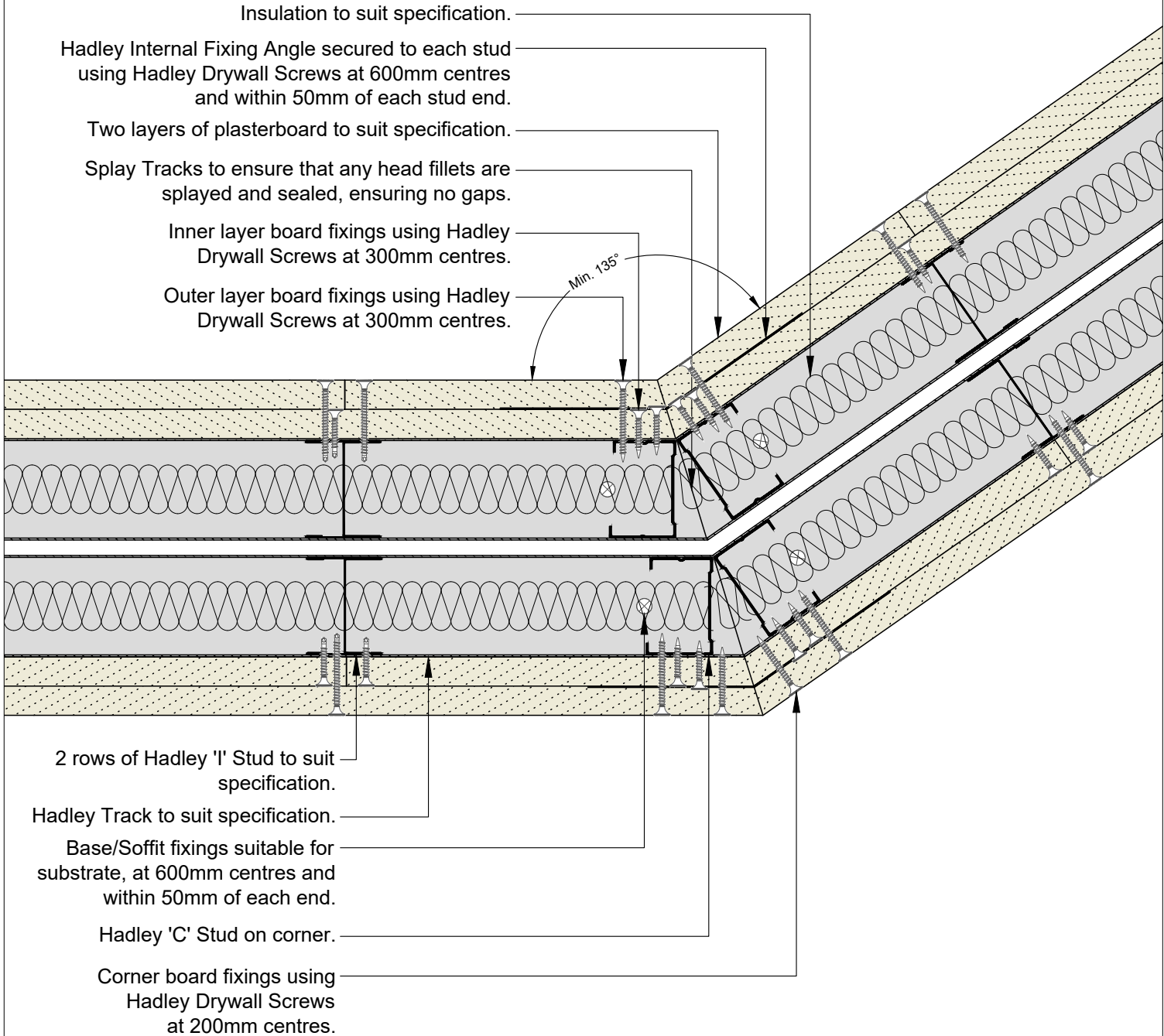
Project:  
Typical System Detail  
See project specification for exact requirements

Title:  
**Hadley Duo**  
Partition - Twin Frame IWL  
Abutment to Drylining Twin Frame

Scale: 1:3 @ A4	Date: Jul 21	Drawn: FM	Checked: JS	Dwg No: <b>DRY-HAD-XX-ZZ-DT-X-0308</b>	Revision: <b>00</b>
--------------------	-----------------	--------------	----------------	---	------------------------

All performance data and system specifications are for systems constructed with materials & components as shown. The inclusion or substitution of any other manufacturers materials or components could invalidate test data and system performance. The information is provided in good faith and is based upon details received which are assumed to include all relevant facts. No duty of care is owed to the recipient or any other third party and Hadley Industries Holdings Ltd cannot accept liability in respect of the details shown. None of the content may be distributed or copied directly without prior approval.

Board Thickness	Fixing Length
≤15mm	25mm
12.5mm + 12.5mm	25mm + 38mm
12.5mm + 15mm	25mm + 38mm
15mm + 15mm	25mm + 42mm

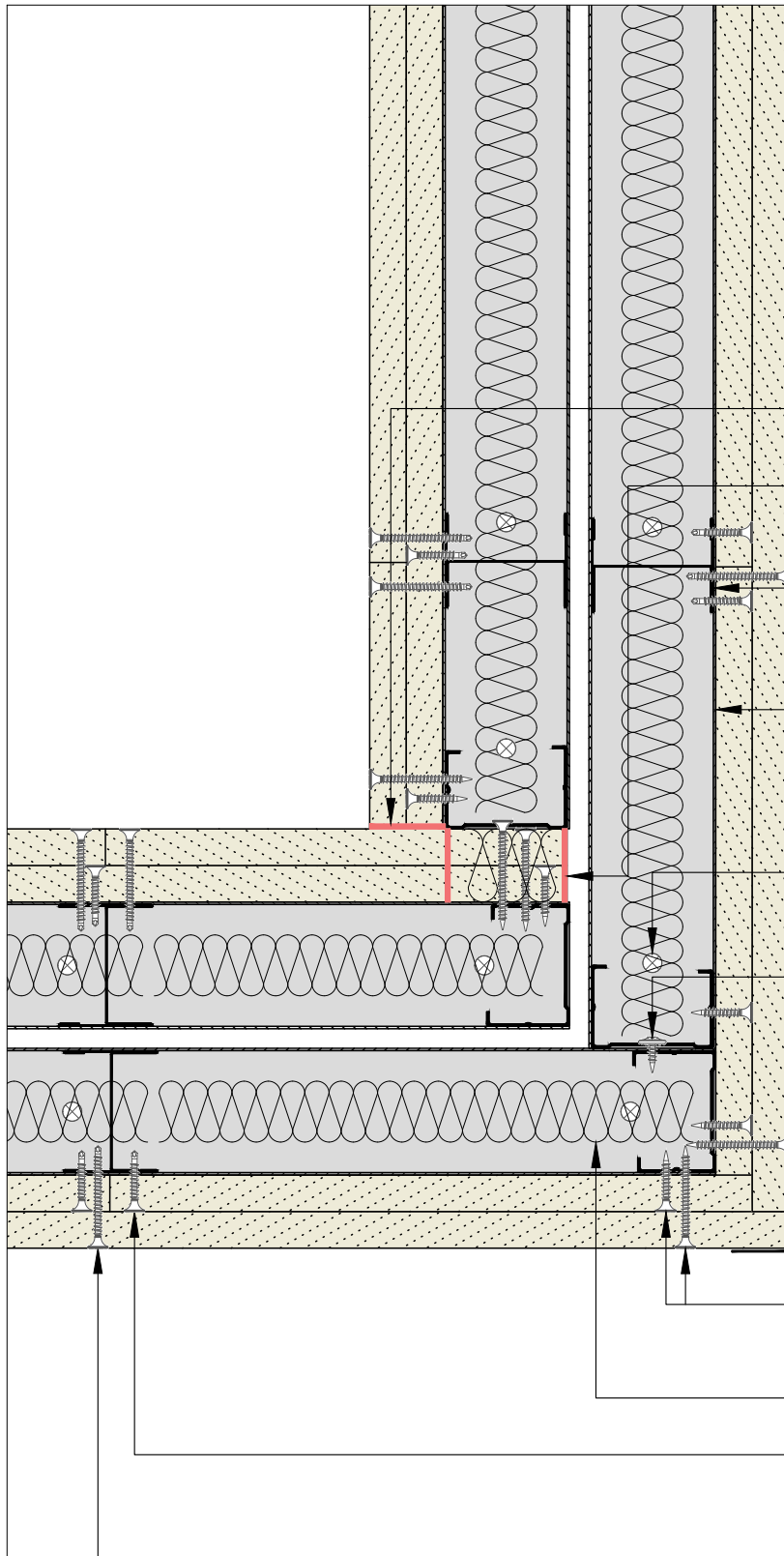


00	JUL21	First Issue	FM	JS	JS	System details to be read in conjunction with Hadley Group project specification pack. All applications to be built in accordance with British Standards, Building Regulations and Hadley Group tested solutions.
Rev:	Date:	Reason for Issue:	Drn:	Chk:	App:	

Project:					
Typical System Detail					
See project specification for exact requirements					
Title:					
Hadley Duo					
Partition - Twin Frame IWL					
Splayed Corner					

Scale:	Date:	Drawn:	Checked:	Dwg No:	Revision:
1:3 @ A4	Jul 21	FM	JS	DRY-HAD-XX-ZZ-DT-X-0309	00

All performance data and system specifications are for systems constructed with materials & components as shown. The inclusion or substitution of any other manufacturers materials or components could invalidate test data and system performance. The information is provided in good faith and is based upon details received which are assumed to include all relevant facts. No duty of care is owed to the recipient or any other third party and Hadley Industries Holdings Ltd cannot accept liability in respect of the details shown. None of the content may be distributed or copied directly without prior approval.



Board Thickness	Fixing Length
≤15mm	25mm
12.5mm + 12.5mm	25mm + 38mm
12.5mm + 15mm	25mm + 38mm
15mm + 15mm	25mm + 42mm

- Acoustic and intumescent sealant to suit specification.
- Rock Mineral Wool (60kg/m<sup>3</sup>) installed to deflection void above boards, sealed with acoustic and intumescent sealant.
- 2 rows of Hadley 'I' Stud to suit specification.
- Two layers of plasterboard to suit specification.
- Hadley Track to suit specification.
- Base/Soffit fixings suitable for substrate, at 600mm centres and within 50mm of each end.
- Abutment fixings using Hadley Wafer Head Drywall Screws at 600mm centres and within 50mm of each end.
- Hadley Corner Bead.
- Corner board fixings using Hadley Drywall Screws at 200mm centres.
- Insulation to suit specification.
- Inner layer board fixings using Hadley Drywall Screws at 300mm centres.
- Outer layer board fixings using Hadley Drywall Screws at 300mm centres.

00	JUL21	First Issue	FM	JS	JS	System details to be read in conjunction with Hadley Group project specification pack. All applications to be built in accordance with British Standards, Building Regulations and Hadley Group tested solutions.
Rev:	Date:	Reason for Issue:	Drn:	Chk:	App:	

Project: Typical System Detail See project specification for exact requirements					
Title: <b>Hadley Duo</b> Partition - Twin Frame IWL 90° Corner					
Scale: 1:3 @ A4	Date: Jul 21	Drawn: FM	Checked: JS	Dwg No: <b>DRY-HAD-XX-ZZ-DT-X-0310</b>	Revision: <b>00</b>



Hadley Group, Downing Street,  
Smethwick, West Midlands B66 2PA  
Tel: +44 (0) 121 555 1329  
E-mail: hct@hadleygroup.co.uk

All performance data and system specifications are for systems constructed with materials & components as shown. The inclusion or substitution of any other manufacturers materials or components could invalidate test data and system performance. The information is provided in good faith and is based upon details received which are assumed to include all relevant facts. No duty of care is owed to the recipient or any other third party and Hadley Industries Holdings Ltd cannot accept liability in respect of the details shown. None of the content may be distributed or copied directly without prior approval.

Stud and track depths and gauge to suit specification.  
Fixing type to suit metalwork gauge.

Avoid outer board joint located on the door jamb.

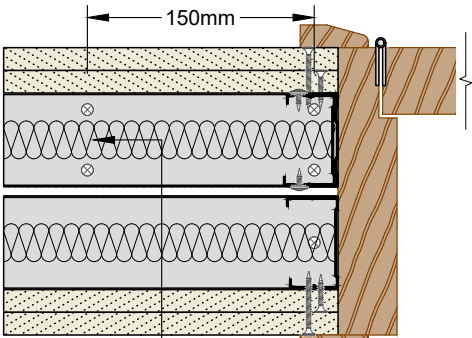
Hadley Track to suit specification.  
Lintel detail to suit opening width.

Hadley Track cut and bent to extend  
250mm down stud, fixed through  
both flanges using 2№ Hadley Wafer  
Head Drywall Screws each side.

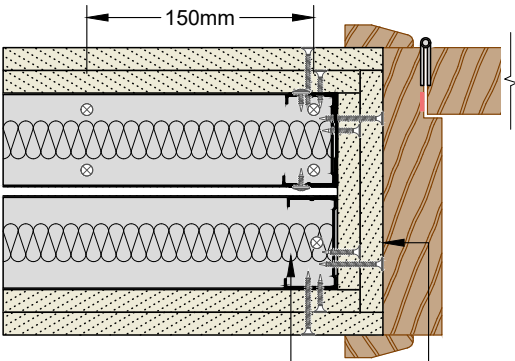
Hadley Track sleeved over stud  
between returned channels at opening  
head & base, fixed through both flanges  
using Hadley Wafer Head Drywall  
Screws at 300mm centres and within  
50mm of each end for each side.

Hadley Track cut and bent to extend  
vertically 300mm, fixed through both  
flanges using 3№ Hadley Wafer Head  
Drywall Screws each side.

**Plan View**



Indicative door frame and  
architraves by others.  
Base track fixed with pairs of  
suitable fixings 150mm apart.



For fire rated openings, apply  
plasterboard as per face board  
specification to the reveals.  
Timber fillets, omitted for clarity, within door  
jamb to suit door manufacturers application  
requirements and tested solution.

00	JUL21	First Issue	FM	JS	JS	System details to be read in conjunction with Hadley Group project specification pack. All applications to be built in accordance with British Standards, Building Regulations and Hadley Group tested solutions.
Rev:	Date:	Reason for Issue:	Drm:	Chk:	App:	

Project: Typical System Detail See project specification for exact requirements					
Title: <b>Hadley Duo</b> Partition - Twin Frame IWL Doorway 0-60 kg					
Scale: NTS	Date: Jul 21	Drawn: FM	Checked: JS	Dwg No: <b>DRY-HAD-XX-ZZ-DT-X-0311</b>	Revision: <b>00</b>

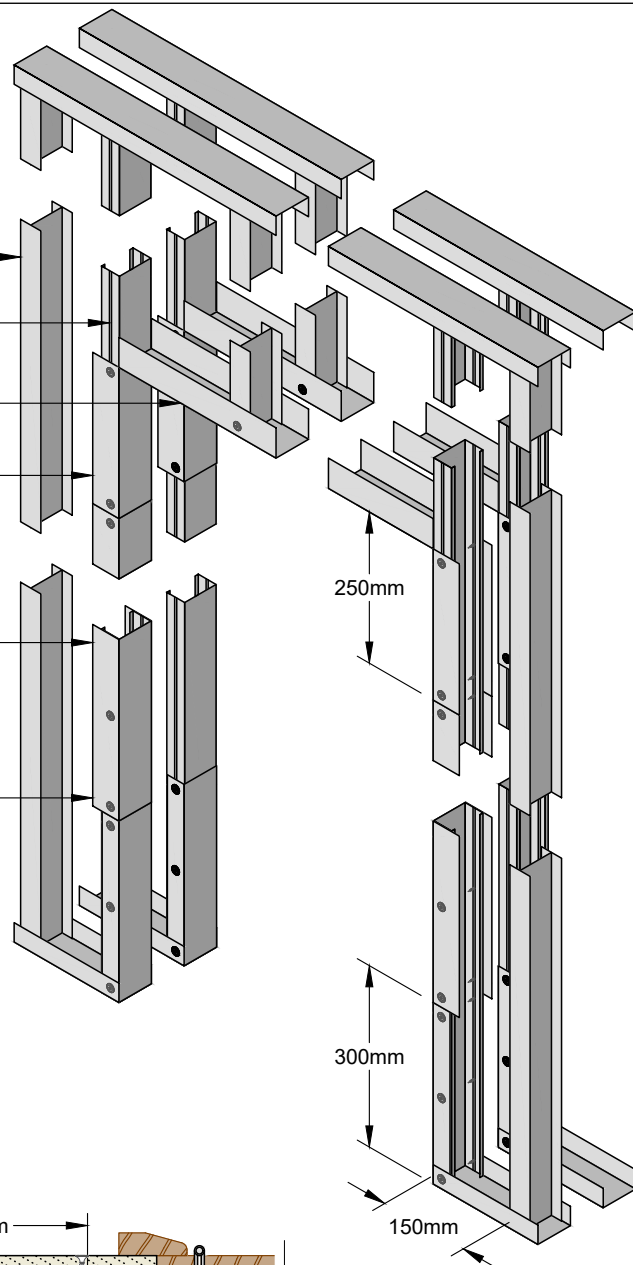


Hadley Group, Downing Street,  
Smethwick, West Midlands B66 2PA  
Tel: +44 (0) 121 555 1329  
E-mail: hct@hadleygroup.co.uk

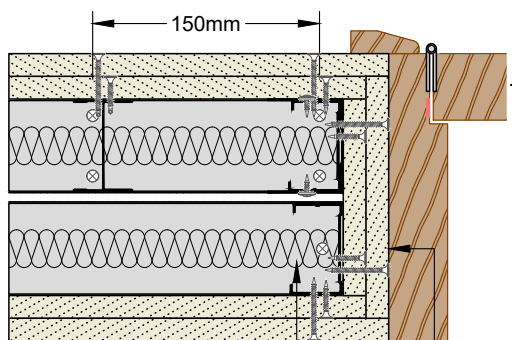
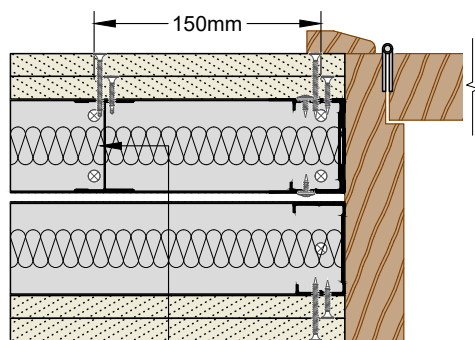
All performance data and system specifications are for systems constructed with materials & components as shown. The inclusion or substitution of any other manufacturers materials or components could invalidate test data and system performance. The information is provided in good faith and is based upon details received which are assumed to include all relevant facts. No duty of care is owed to the recipient or any other third party and Hadley Industries Holdings Ltd cannot accept liability in respect of the details shown. None of the content may be distributed or copied directly without prior approval.

Stud and track depths and gauge to suit specification.  
Fixing type to suit metalwork gauge.

- Additional Hadley Stud located up to 150mm from jamb stud.
- Avoid outer board joint located on the door jamb.
- Hadley Track to suit specification. Lintel detail to suit opening width.
- Hadley Track cut and bent to extend 250mm down stud, fixed through both flanges using 2№ Hadley Wafer Head Drywall Screws each side.
- Hadley Track sleeved over stud between returned channels at opening head & base, fixed through both flanges using Hadley Wafer Head Drywall Screws at 300mm centres and within 50mm of each end for each side.
- Hadley Track cut and bent to extend vertically 300mm, fixed through both flanges using 3№ Hadley Wafer Head Drywall Screws each side.



#### Plan View



Indicative door frame and architraves by others.  
Base track fixed with pairs of suitable fixings 150mm apart.

For fire rated openings, apply plasterboard as per face board specification to the reveals.  
Timber fillets, omitted for clarity, within door jamb to suit door manufacturers application requirements and tested solution.

00	JUL21	First Issue	FM	JS	JS	System details to be read in conjunction with Hadley Group project specification pack. All applications to be built in accordance with British Standards, Building Regulations and Hadley Group tested solutions.
Rev:	Date:	Reason for Issue:	Drm:	Chk:	App:	

Project:

Typical System Detail  
See project specification for exact requirements

Title:

**Hadley Duo**  
Partition - Twin Frame IWL  
Doorway 61-100 kg

Scale:	Date:	Drawn:	Checked:	Dwg No:	Revision:
NTS	Jul 21	FM	JS	<b>DRY-HAD-XX-ZZ-DT-X-0312</b>	<b>00</b>



Hadley Group, Downing Street,  
Smethwick, West Midlands B66 2PA  
Tel: +44 (0) 121 555 1329  
E-mail: hct@hadleygroup.co.uk

All performance data and system specifications are for systems constructed with materials & components as shown. The inclusion or substitution of any other manufacturers materials or components could invalidate test data and system performance. The information is provided in good faith and is based upon details received which are assumed to include all relevant facts. No duty of care is owed to the recipient or any other third party and Hadley Industries Holdings Ltd cannot accept liability in respect of the details shown. None of the content may be distributed or copied directly without prior approval.



Board Thickness	Fixing Length
≤15mm	25mm
12.5mm + 12.5mm	25mm + 38mm
12.5mm + 15mm	25mm + 38mm
15mm + 15mm	25mm + 42mm

Insulation to suit specification.

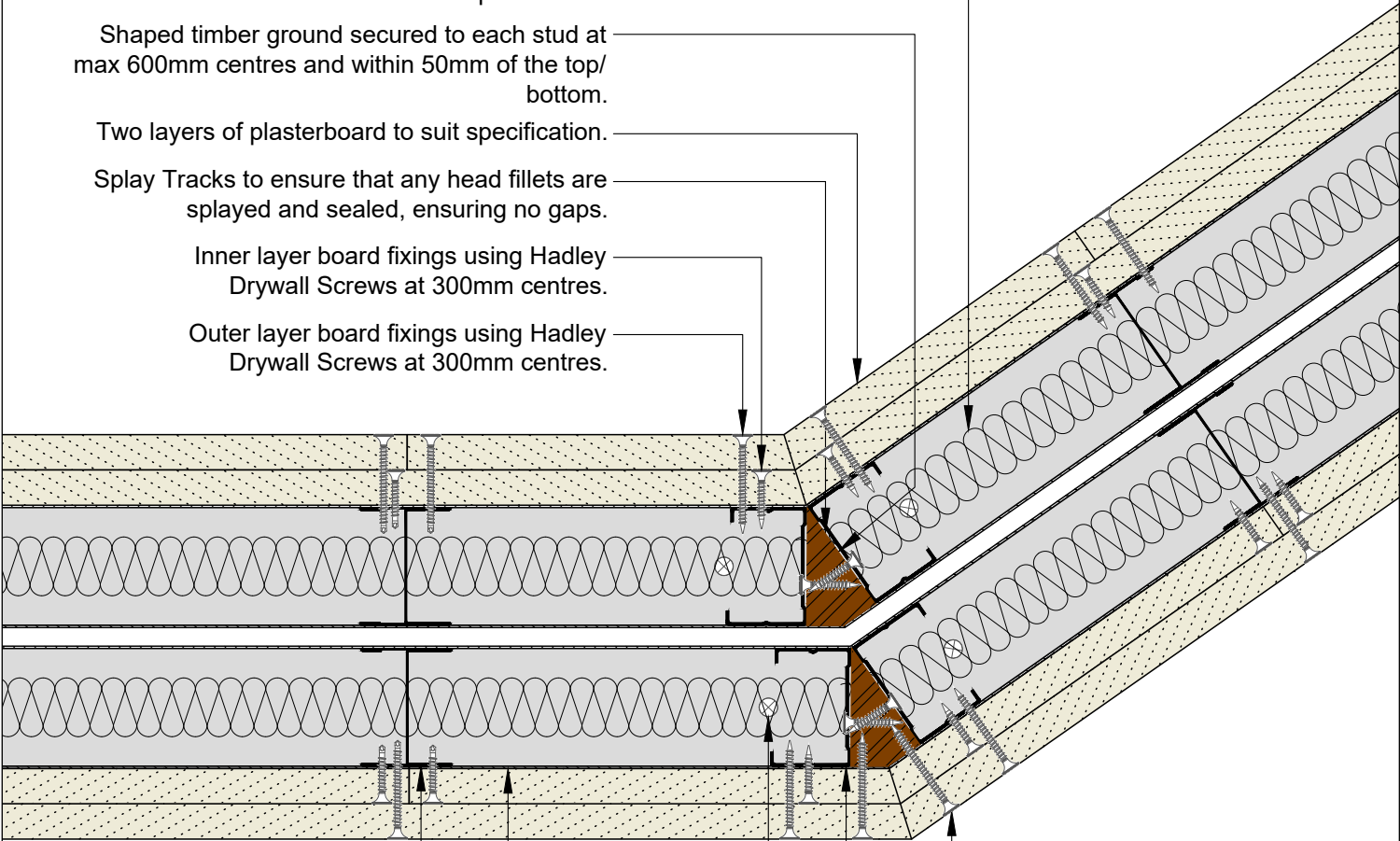
Shaped timber ground secured to each stud at max 600mm centres and within 50mm of the top/ bottom.

Two layers of plasterboard to suit specification.

Splay Tracks to ensure that any head fillets are splayed and sealed, ensuring no gaps.

Inner layer board fixings using Hadley Drywall Screws at 300mm centres.

Outer layer board fixings using Hadley Drywall Screws at 300mm centres.



2 rows of Hadley 'I' Stud to suit specification.

Hadley Track to suit specification.

Base/Soffit fixings suitable for substrate, at 600mm centres and within 50mm of each end.

Hadley 'C' Stud on corner.

Corner board fixings using Hadley Drywall Screws at 200mm centres.

00	APRL24	First Issue	JS	FM	FM	System details to be read in conjunction with Hadley Group project specification pack. All applications to be built in accordance with British Standards, Building Regulations and Hadley Group tested solutions.
Rev:	Date:	Reason for Issue:	Drn:	Chk:	App:	

Project:					
Typical System Detail					
See project specification for exact requirements					
Title:					
Hadley Duo					
Partition - Twin Frame IWL					
Splay Corner Alternative					

Scale:	Date:	Drawn:	Checked:	Dwg No:	Revision:
NTS	Aprl 24	JS	FM	DRY-HAD-XX-ZZ-DT-X-0313	00

All performance data and system specifications are for systems constructed with materials & components as shown. The inclusion or substitution of any other manufacturers materials or components could invalidate test data and system performance. The information is provided in good faith and is based upon details received which are assumed to include all relevant facts. No duty of care is owed to the recipient or any other third party and Hadley Industries Holdings Ltd cannot accept liability in respect of the details shown. None of the content may be distributed or copied directly without prior approval.