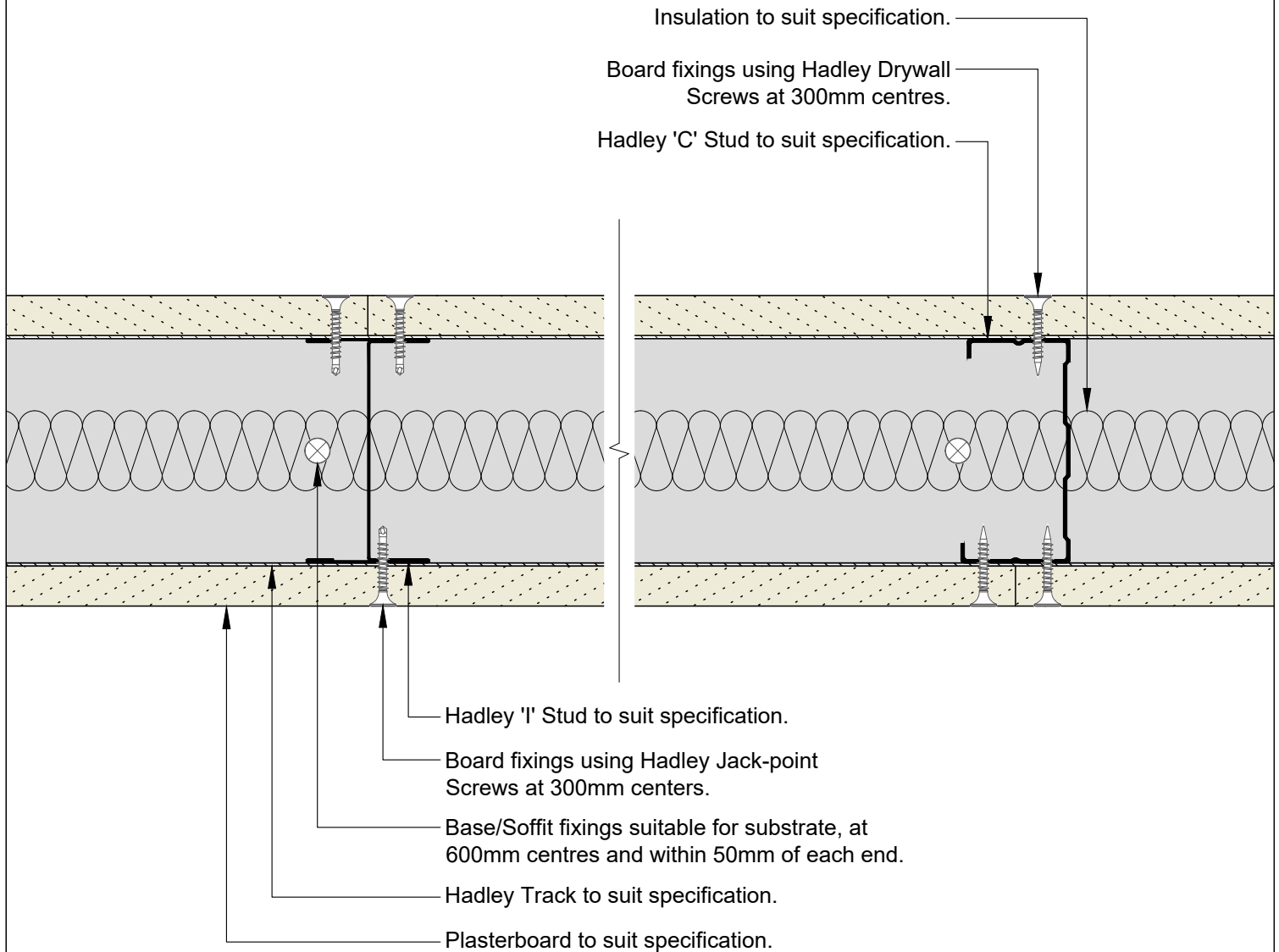


# Hadley DRYLINING

## Standard Details

### Hadley SOLO – Single Layer - Drawings





00	JUL21	First Issue	FM	JS	JS	System details to be read in conjunction with Hadley Group project specification pack. All applications to be built in accordance with British Standards, Building Regulations and Hadley Group tested solutions.
Rev:	Date:	Reason for Issue:	Drn:	Chk:	App:	

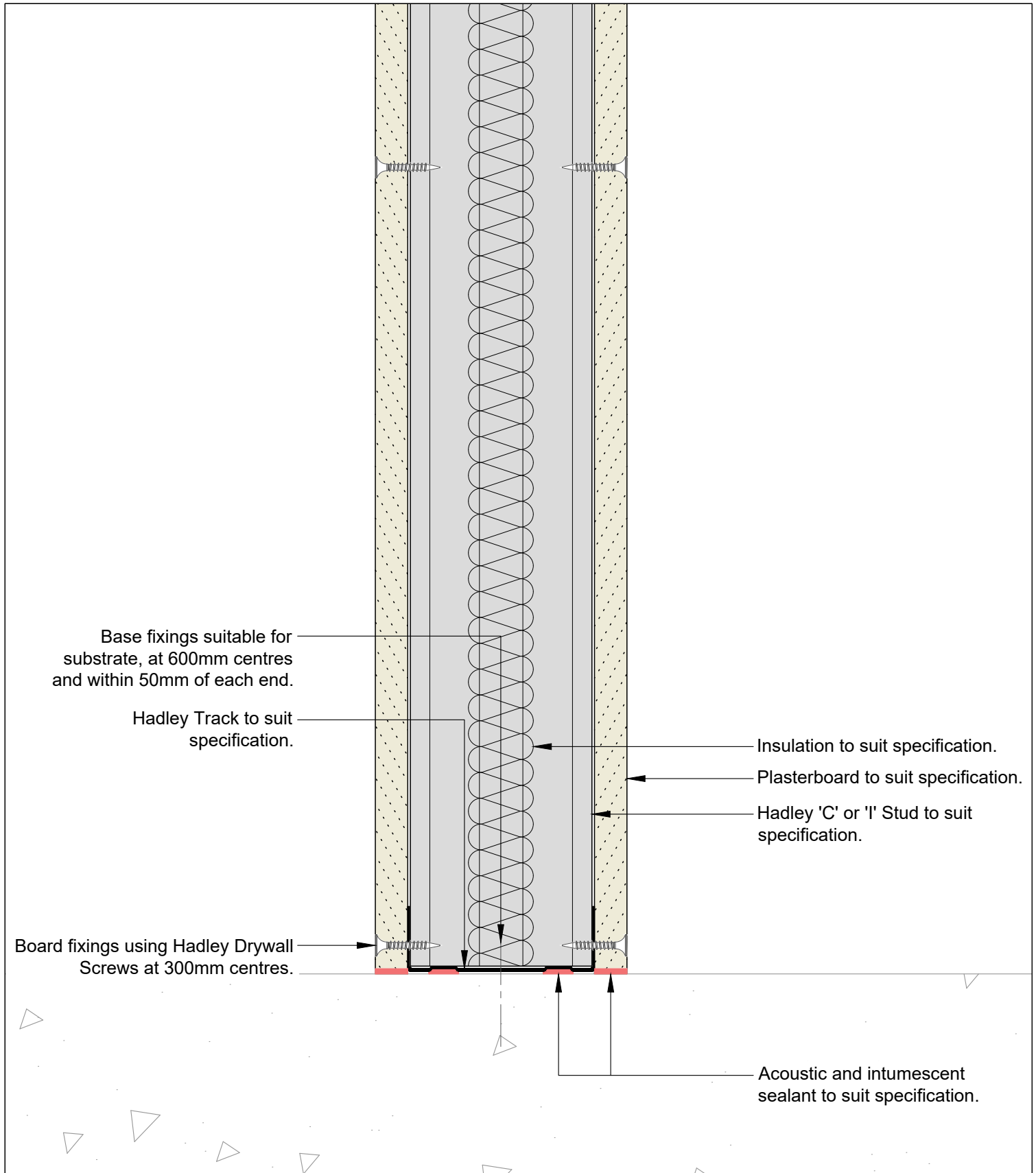
Project:  
**Typical System Detail**  
 See project specification for exact requirements

Title:  
**Hadley Solo**  
 Partition - Single Layer  
 Plan



Hadley Group, Downing Street,  
 Smethwick, West Midlands B66 2PA  
 Tel: +44 (0) 121 555 1329  
 E-mail: hct@hadleygroup.co.uk

Scale:	Date:	Drawn:	Checked:	Dwg No:	Revision:
1:2 @ A4	Jul 21	FM	JS	<b>DRY-HAD-XX-ZZ-DT-X-0101</b>	<b>00</b>



00	JUL21	First Issue	FM	JS	JS	System details to be read in conjunction with Hadley Group project specification pack. All applications to be built in accordance with British Standards, Building Regulations and Hadley Group tested solutions.
Rev:	Date:	Reason for Issue:	Drn:	Chk:	App:	

Project:						
Typical System Detail						
See project specification for exact requirements						
Title:						
<b>Hadley Solo</b>						
Partition - Single Layer						
Base						
Scale:	Date:	Drawn:	Checked:	Dwg No:	Revision:	
1:2 @ A4	Jul 21	FM	JS	<b>DRY-HAD-XX-ZZ-DT-X-0102</b>	<b>00</b>	



Hadley Group, Downing Street,  
Smethwick, West Midlands B66 2PA  
Tel: +44 (0) 121 555 1329  
E-mail: hct@hadleygroup.co.uk

All performance data and system specifications are for systems constructed with materials & components as shown. The inclusion or substitution of any other manufacturers materials or components could invalidate test data and system performance. The information is provided in good faith and is based upon details received which are assumed to include all relevant facts. No duty of care is owed to the recipient or any other third party and Hadley Industries PLC cannot accept liability in respect of the details shown. None of the content may be distributed or copied directly without prior approval.

Soffit fixings suitable for substrate, at 600mm centres and within 50mm of each end.

Hadley Track to suit specification.

Acoustic and intumescent sealant to suit specification.

Board fixings using Hadley Drywall Screws at 300mm centres.

Hadley 'C' or 'I' Stud to suit specification.

Plasterboard to suit specification.

Insulation to suit specification, hung from top of partition using Hadley 25x25mm Steel Angle, secured through to soffit using suitable fixings within 50mm of each end.

00	JUL21	First Issue	FM	JS	JS	System details to be read in conjunction with Hadley Group project specification pack. All applications to be built in accordance with British Standards, Building Regulations and Hadley Group tested solutions.
Rev:	Date:	Reason for Issue:	Drn:	Chk:	App:	

Project:

Typical System Detail  
See project specification for exact requirements

Title:

**Hadley Solo**  
Partition - Single Layer  
Fixed Head

Scale:

1:2 @ A4

Date:

Jul 21

Drawn:

FM

Checked:

JS

Dwg No:

**DRY-HAD-XX-ZZ-DT-X-0103**

Revision:

**00**



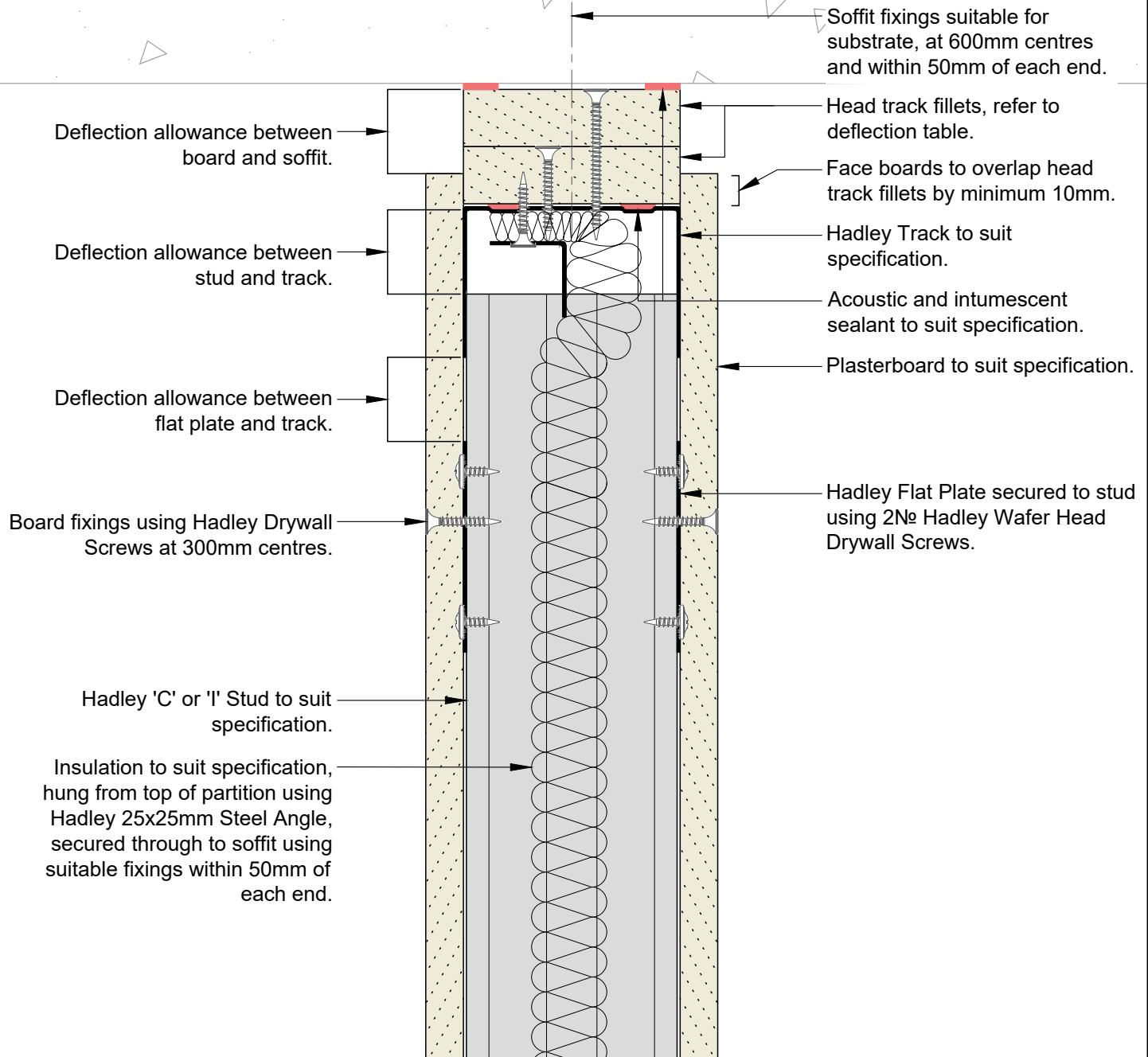
Hadley Group, Downing Street,  
Smethwick, West Midlands B66 2PA

Tel: +44 (0) 121 555 1329

E-mail: hct@hadleygroup.co.uk

All performance data and system specifications are for systems constructed with materials & components as shown. The inclusion or substitution of any other manufacturers materials or components could invalidate test data and system performance. The information is provided in good faith and is based upon details received which are assumed to include all relevant facts. No duty of care is owed to the recipient or any other third party and Hadley Industries PLC cannot accept liability in respect of the details shown. None of the content may be distributed or copied directly without prior approval.

Min. Deflection to suit structural engineer design	Min. Head Track Fillet(s)	Hadley Track Flange
5mm	1x15mm Type F Plasterboard	50mm
9mm	1x19mm CoreBoard	50mm
15mm	2x12.5mm Type F Plasterboard	50mm
20mm	2x15mm Type F Plasterboard	50mm
28mm	2x19mm CoreBoard	50mm
35mm	3x15mm Type F Plasterboard	70mm



00	JUL21	First Issue	FM	JS	JS	System details to be read in conjunction with Hadley Group project specification pack. All applications to be built in accordance with British Standards, Building Regulations and Hadley Group tested solutions.
Rev:	Date:	Reason for Issue:	Drn:	Chk:	App:	

Project:

Typical System Detail  
See project specification for exact requirements

Title:

**Hadley Solo**  
Partition - Single Layer  
Deflection Head up to 60 min EI Fire Resistance

Scale:	Date:	Drawn:	Checked:	Dwg No:	Revision:
1:2 @ A4	Jul 21	FM	JS	<b>DRY-HAD-XX-ZZ-DT-X-0104</b>	<b>00</b>

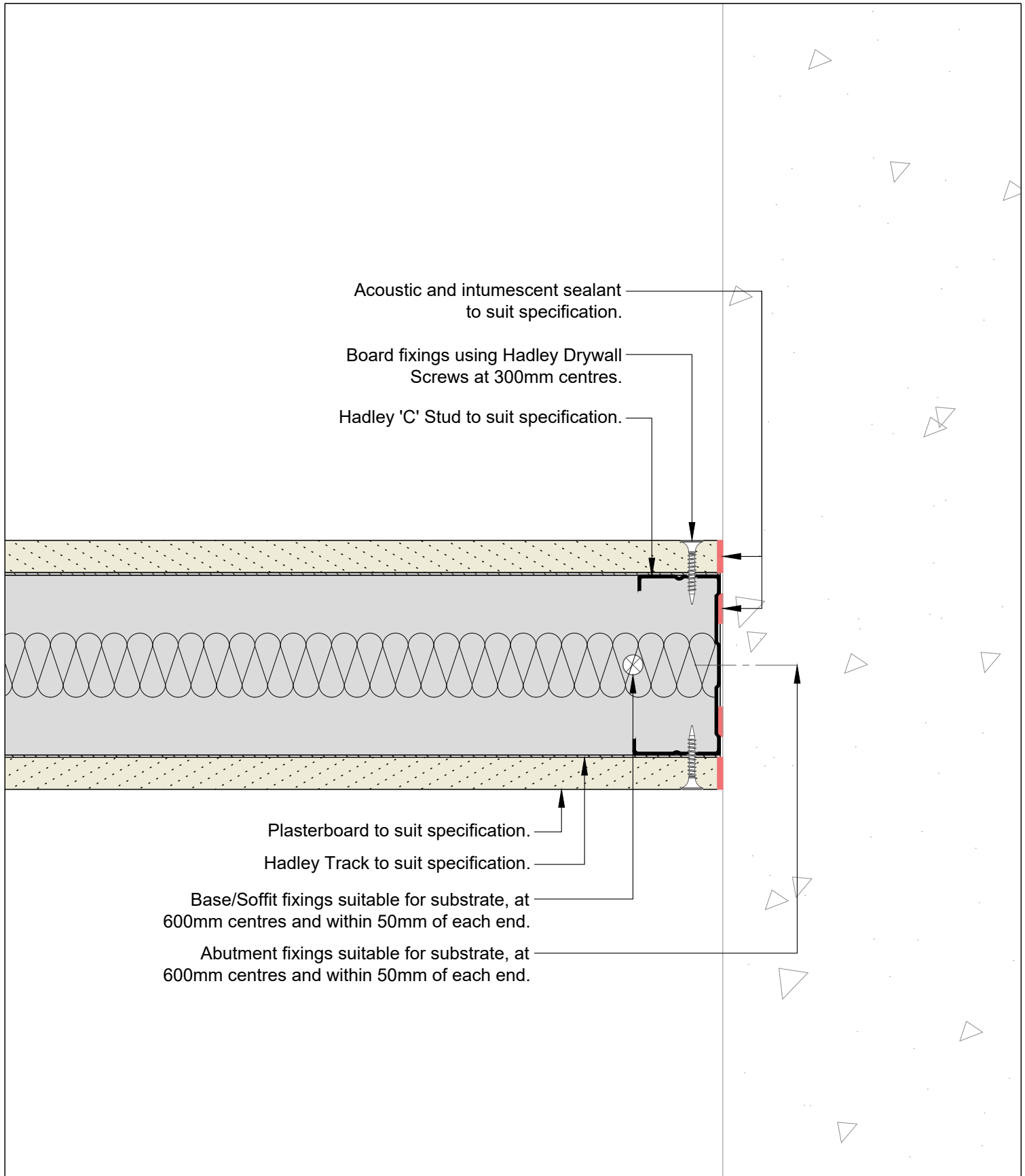



Hadley Group, Downing Street,  
Smethwick, West Midlands B66 2PA

Tel: +44 (0) 121 555 1329

E-mail: hct@hadleygroup.co.uk

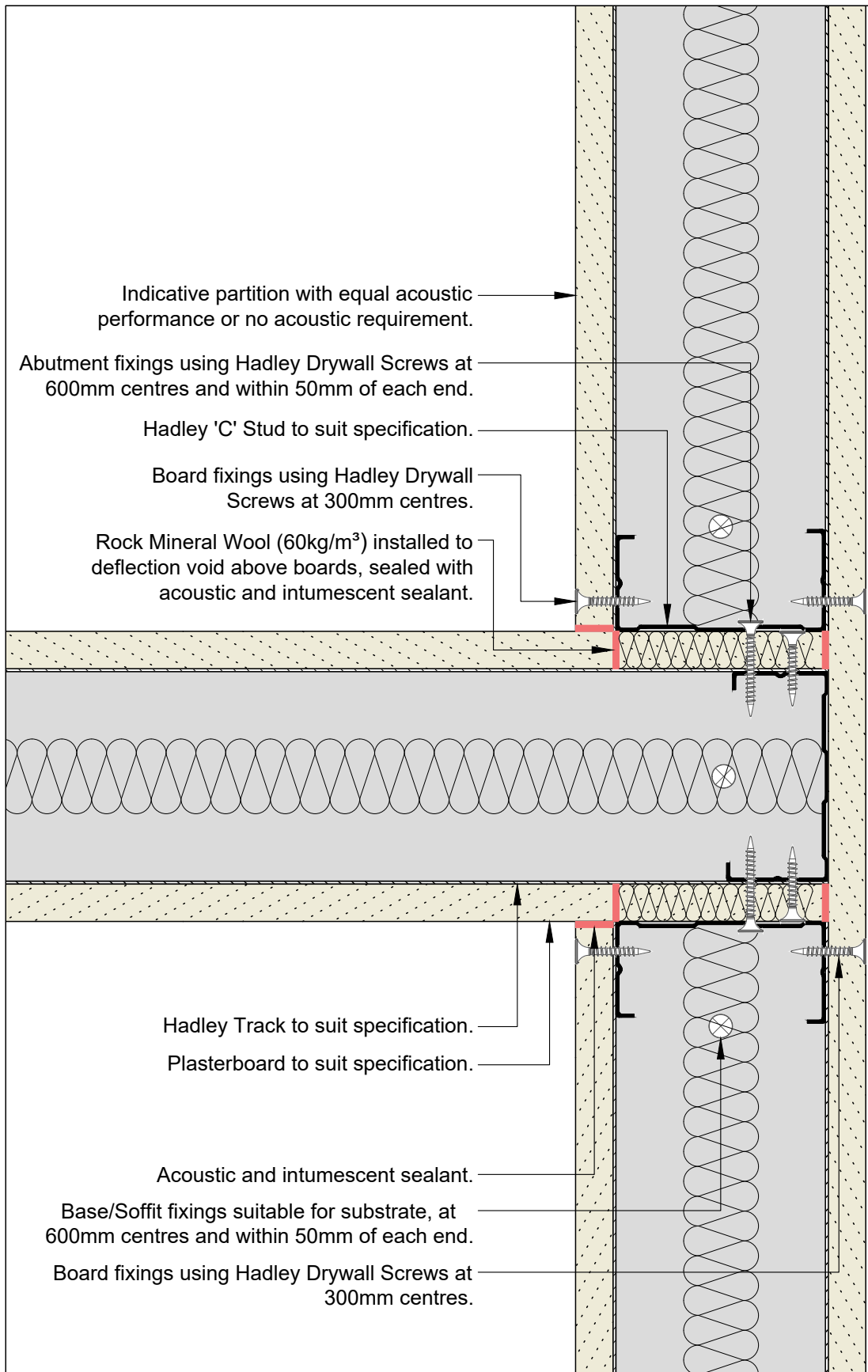
All performance data and system specifications are for systems constructed with materials & components as shown. The inclusion or substitution of any other manufacturers materials or components could invalidate test data and system performance. The information is provided in good faith and is based upon details received which are assumed to include all relevant facts. No duty of care is owed to the recipient or any other third party and Hadley Industries PLC cannot accept liability in respect of the details shown. None of the content may be distributed or copied directly without prior approval.



00	JUL21	First Issue	FM	JS	JS	System details to be read in conjunction with Hadley Group project specification pack. All applications to be built in accordance with British Standards, Building Regulations and Hadley Group tested solutions.					
Rev:	Date:	Reason for Issue:	Drn:	Chk:	App:						
<div><p>Hadley Group, Downing Street, Smethwick, West Midlands B66 2PA</p><p>Tel: +44 (0) 121 555 1329</p><p>E-mail: hct@hadleygroup.co.uk</p></div>						Project:					
						Typical System Detail See project specification for exact requirements					
						Title:					
						<b>Hadley Solo</b> Partition - Single Layer Abutment to Concrete/Blockwork					
Scale:		Date:		Drawn:		Checked:		Dwg No:		Revision:	
1:2 @ A4		Jul 21		FM		JS		DRY-HAD-XX-ZZ-DT-X-0106		00	
All performance data and system specifications are for systems constructed with materials & components as shown. The inclusion or substitution of any other manufacturers materials or components could invalidate test data and system performance. The information is provided in good faith and is based upon details received which are assumed to include all relevant facts. No duty of care is owed to the recipient or any other third party and Hadley Industries PLC cannot accept liability in respect of the details shown. None of the content may be distributed or copied directly without prior approval.											







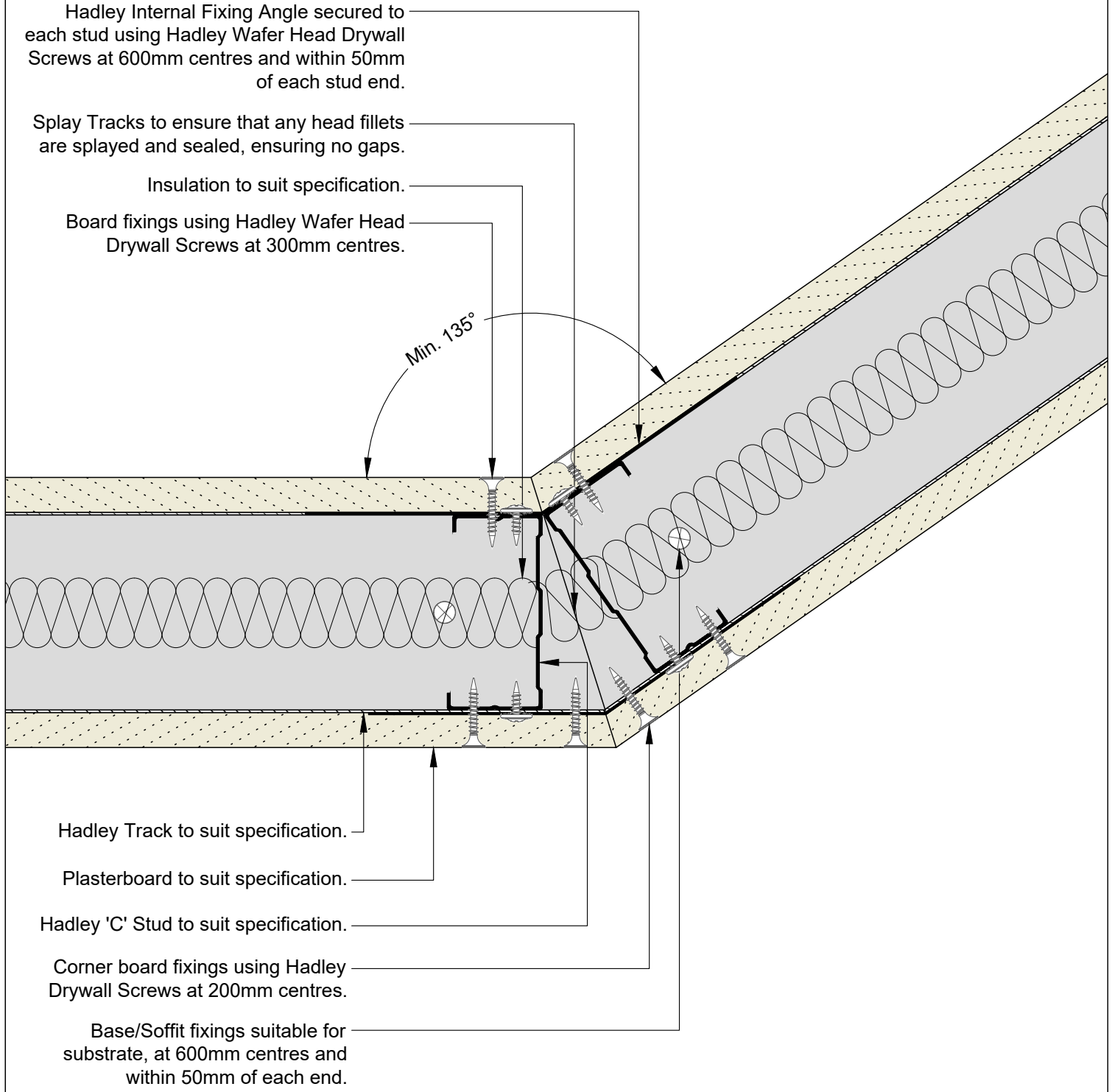
00	JUL21	First Issue	FM	JS	JS	System details to be read in conjunction with Hadley Group project specification pack. All applications to be built in accordance with British Standards, Building Regulations and Hadley Group tested solutions.
Rev:	Date:	Reason for Issue:	Drn:	Chk:	App:	

Project:					
Typical System Detail See project specification for exact requirements					
Title:					
Hadley Solo Partition - Single Layer Abutment to Drylining Partition - Flanking detail					
Scale:	Date:	Drawn:	Checked:	Dwg No:	Revision:
1:2 @ A4	Jul 21	FM	JS	DRY-HAD-XX-ZZ-DT-X-0108	00



Hadley Group, Downing Street,  
Smethwick, West Midlands B66 2PA  
Tel: +44 (0) 121 555 1329  
E-mail: hct@hadleygroup.co.uk



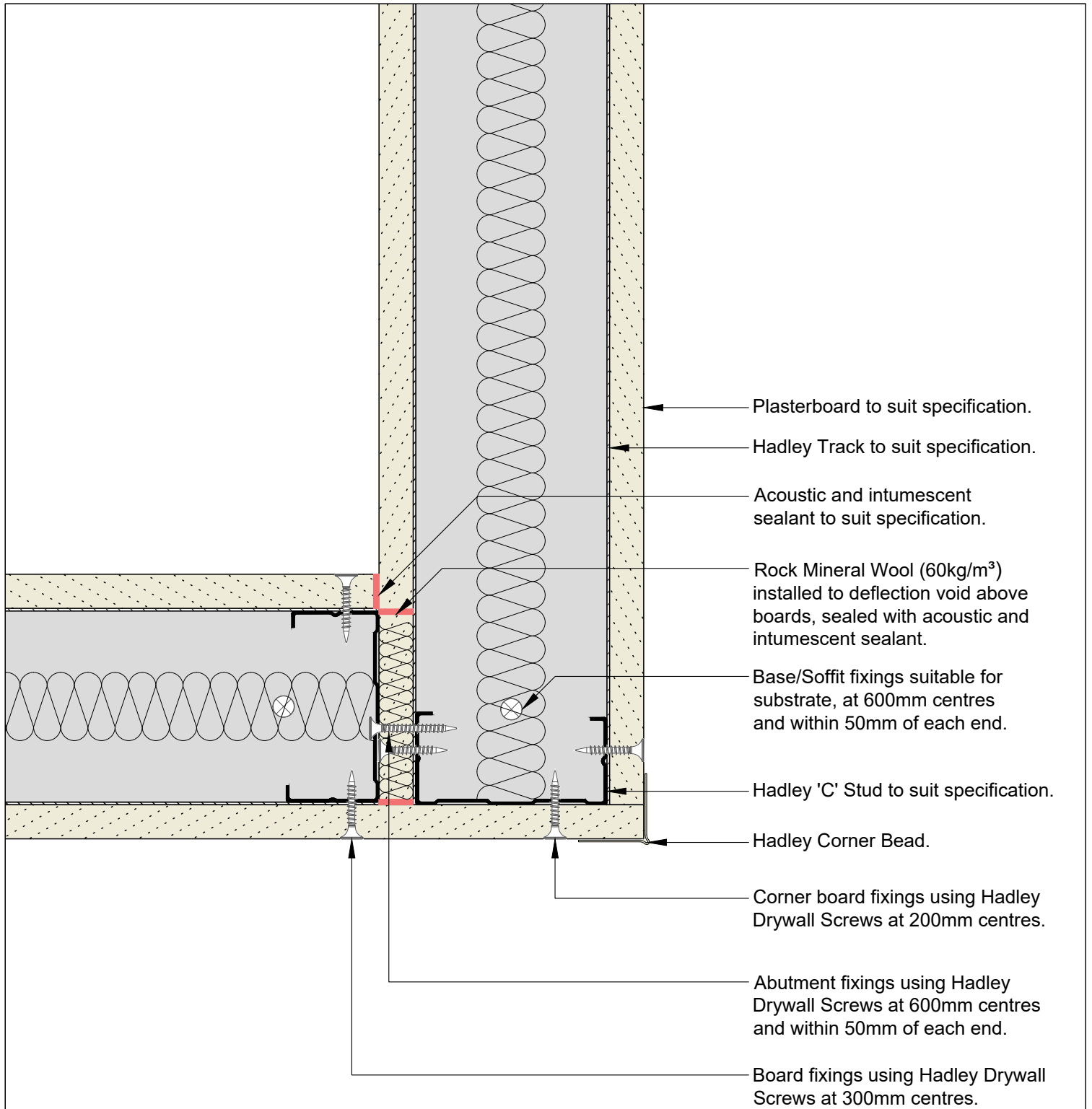


00	JUL21	First Issue	FM	JS	JS	System details to be read in conjunction with Hadley Group project specification pack. All applications to be built in accordance with British Standards, Building Regulations and Hadley Group tested solutions.
Rev:	Date:	Reason for Issue:	Drn:	Chk:	App:	

Project: Typical System Detail See project specification for exact requirements					
Title: <b>Hadley Solo</b> Partition - Single Layer Splayed Corner					
Scale: 1:2 @ A4	Date: Jul 21	Drawn: FM	Checked: JS	Dwg No: <b>DRY-HAD-XX-ZZ-DT-X-0109</b>	Revision: <b>00</b>



Hadley Group, Downing Street,  
Smethwick, West Midlands B66 2PA  
Tel: +44 (0) 121 555 1329  
E-mail: hct@hadleygroup.co.uk



00	JUL21	First Issue	FM	JS	JS	System details to be read in conjunction with Hadley Group project specification pack. All applications to be built in accordance with British Standards, Building Regulations and Hadley Group tested solutions.
Rev:	Date:	Reason for Issue:	Drn:	Chk:	App:	

Project:					
Typical System Detail See project specification for exact requirements					
Title:					
<b>Hadley Solo</b> Partition - Single Layer 90° Corner					
Scale:					
1:2 @ A4	Date:	Jul 21	Drawn:	FM	Checked:
				JS	Dwg No:
					<b>DRY-HAD-XX-ZZ-DT-X-0110</b>
Revision:					00



Hadley Group, Downing Street,  
Smethwick, West Midlands B66 2PA

Tel: +44 (0) 121 555 1329

E-mail: hct@hadleygroup.co.uk

All performance data and system specifications are for systems constructed with materials & components as shown. The inclusion or substitution of any other manufacturers materials or components could invalidate test data and system performance. The information is provided in good faith and is based upon details received which are assumed to include all relevant facts. No duty of care is owed to the recipient or any other third party and Hadley Industries PLC cannot accept liability in respect of the details shown. None of the content may be distributed or copied directly without prior approval.

Stud and track depths and gauge to suit specification.  
Fixing type to suit metalwork gauge.

Avoid board joint located on the door jamb.

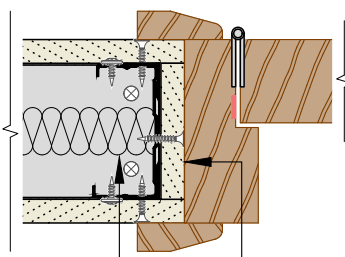
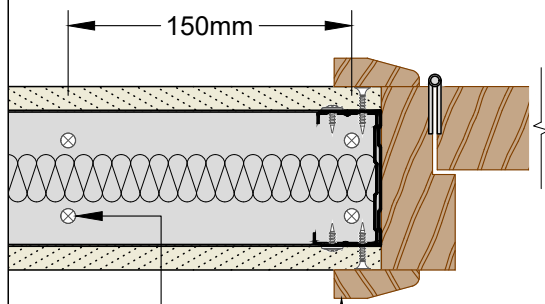
Hadley Track to suit specification.  
Lintel detail to suit opening width.

Hadley Track cut and bent to extend  
250mm down stud, fixed through  
both flanges using 2Nº Hadley Wafer  
Head Drywall Screws each side.

Hadley Track sleeved over stud  
between returned channels at opening  
head & base, fixed through both  
flanges using Hadley Wafer Head  
Drywall Screws at 300mm centres and  
within 50mm of each end each side.

Hadley Track cut and bent to extend  
vertically 300mm, fixed through both  
flanges using 3Nº Hadley Wafer  
Head Drywall Screws each side.

#### Plan View



Indicative door frame and  
architraves by others.

Base track fixed with pairs of  
suitable fixings 150mm apart.

For fire rated openings, apply  
plasterboard as per face board  
specification to the reveals.

Timber fillets, omitted for clarity, within door  
jamb to suit door manufacturers application  
requirements and tested solution.

250mm

300mm

00	JUL21	First Issue	FM	JS	JS	System details to be read in conjunction with Hadley Group project specification pack. All applications to be built in accordance with British Standards, Building Regulations and Hadley Group tested solutions.
Rev:	Date:	Reason for Issue:	Drn:	Chk:	App:	

Project:

Typical System Detail  
See project specification for exact requirements

Title:

**Hadley Solo**  
Partition - Single Layer  
Doorway 0-60 kg



Hadley Group, Downing Street,  
Smethwick, West Midlands B66 2PA

Tel: +44 (0) 121 555 1329

E-mail: hct@hadleygroup.co.uk

Scale:	Date:	Drawn:	Checked:	Dwg No:	Revision:
NTS	Jul 21	FM	JS	<b>DRY-HAD-XX-ZZ-DT-X-0111</b>	<b>00</b>

All performance data and system specifications are for systems constructed with materials & components as shown. The inclusion or substitution of any other manufacturers materials or components could invalidate test data and system performance. The information is provided in good faith and is based upon details received which are assumed to include all relevant facts. No duty of care is owed to the recipient or any other third party and Hadley Industries PLC cannot accept liability in respect of the details shown. None of the content may be distributed or copied directly without prior approval.

Stud and track depths and gauge to suit specification.  
Fixing type to suit metalwork gauge.

Additional Hadley Stud located up to  
150mm from jamb stud.

Avoid board joint located on the door jamb.

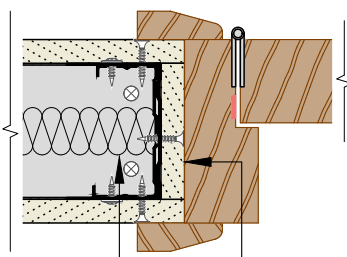
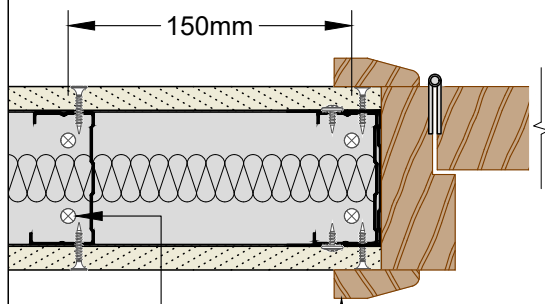
Hadley Track to suit specification.  
Lintel detail to suit opening width.

Hadley Track cut and bent to extend  
250mm down stud, fixed through both  
flanges using 2N<sup>o</sup> Hadley Wafer Head  
Drywall Screws each side.

Hadley Track sleeved over stud  
between returned channels at opening  
head & base, fixed through both  
flanges using Hadley Wafer Head  
Drywall Screws at 300mm centres and  
within 50mm of each end each side.

Hadley Track cut and bent to extend  
vertically 300mm, fixed through both  
flanges using 3N<sup>o</sup> Hadley Wafer  
Head Drywall Screws each side.

#### Plan View



Indicative door frame and  
architraves by others.

Base track fixed with pairs of  
suitable fixings 150mm apart.

For fire rated openings, apply  
plasterboard as per face board  
specification to the reveals.

Timber fillets, omitted for clarity, within door  
jamb to suit door manufacturers application  
**requirements and tested solution**

250mm

300mm

150mm

00 JUL21 First Issue FM JS JS System details to be read in conjunction with Hadley Group project specification pack. All applications to be built in accordance with British  
Rev: Date: Reason for Issue: Drn: Chk: App: Standards, Building Regulations and Hadley Group tested solutions.

Project:

Typical System Detail  
See project specification for exact requirements

Title:

**Hadley Solo**  
Partition - Single Layer  
Doorway 61-100 kg

Scale:

NTS

Date:

Jul 21

Drawn:

FM

Checked:

JS

Dwg No:

**DRY-HAD-XX-ZZ-DT-X-0112**

Revision:

**00**



Hadley Group, Downing Street,  
Smethwick, West Midlands B66 2PA

Tel: +44 (0) 121 555 1329

E-mail: hct@hadleygroup.co.uk

All performance data and system specifications are for systems constructed with materials & components as shown. The inclusion or substitution of any other manufacturers materials or components could invalidate test data and system performance. The information is provided in good faith and is based upon details received which are assumed to include all relevant facts. No duty of care is owed to the recipient or any other third party and Hadley Industries PLC cannot accept liability in respect of the details shown. None of the content may be distributed or copied directly without prior approval.