



PROPOSED EAST (FRONT) ELEVATION SCALE: 1:50



PROPOSED WEST (REAR) ELEVATION SCALE: 1:50

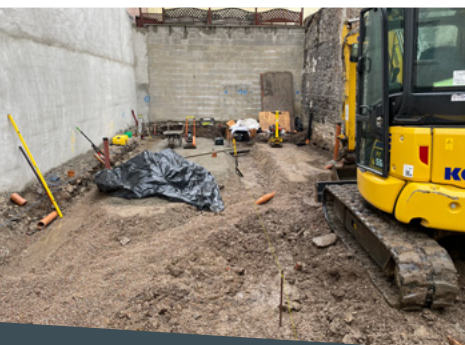
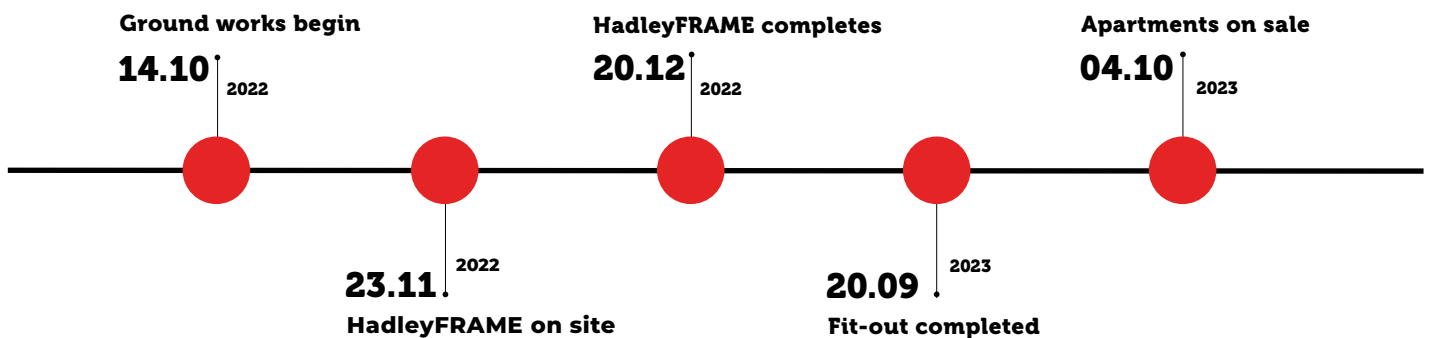
JMEC

Duhamel Lane, St Helier, Jersey

Designed with an asymmetrical sloping mansard roof and terrace, this block of 3 apartments nestles into a tight infill site in the quiet back streets of the capital.

The HadleyFRAME pre-panelised superstructure can be adapted to suit any size of project, from multi-block 7 storey apartments like The Limes, to compact developments like Duhamel Lane. With the system requiring minimal laydown space coupled with a carefully planned delivery schedule, the project caused little disruption to the neighbours.

The HadleyFRAME install completed on time, and despite an additional 12 weeks fit out due to the complex contours of the internal space, two of the three apartments were sold less than a year from the beginning of work on site.



Apartment three has exclusive use of the roof terrace via a bespoke steel staircase designed, supplied and installed as part of the HadleyFRAME service. The staircase is just one example of how the in-house engineers and detailers support the complete project.

With experience in screw-piles, drylining, facades and more, our commercial team would welcome a review of your complete project to ensure you gain the greatest value from our partnership.



John McGranahan
Managing Director, JMEC

"Compared to traditional methods, using Hadley allows us to take on bigger and more complex jobs that would be too risky otherwise, especially with the skills shortage in the industry. It's a challenging time for construction and the JMEC philosophy is to carefully select our projects to manage our risk. We put our business security and longevity above the short-term gains, so having a construction partner like Hadley is a blessing.

One of the things I value most from the Hadley team is their attitude. There is always a solution. And it never starts with the sharp intake of breath, chin scratching and 'that will cost you' standard contractor response. They usually come back with options too and consider the wider project aims from the outset so we are always focused on the same goal.

Building in Hadley keeps our project on time so we can plan our activity tightly to their program. We have the follow-on trades on site while they are installing the upper floors. While it can be slightly more expensive to build in Hadley than in traditional, the costs are more than recovered by completing far sooner.

There will be many more JMEC projects built in Hadley, I can't see us ever going back to traditional now."



The finished building blends in with the traditional neighbours, while utilising modern elements in the facade that give a hint to the luxury apartments within.

if you would like to discuss your projects, or your business in general, you can talk to our team and visit one of our active project around the UK or Jersey.

Visit www.hadleygroup.com email the team or call Lauren Williams on 0121 296 8748.



ask.hadleyframe@hadleygroup.com