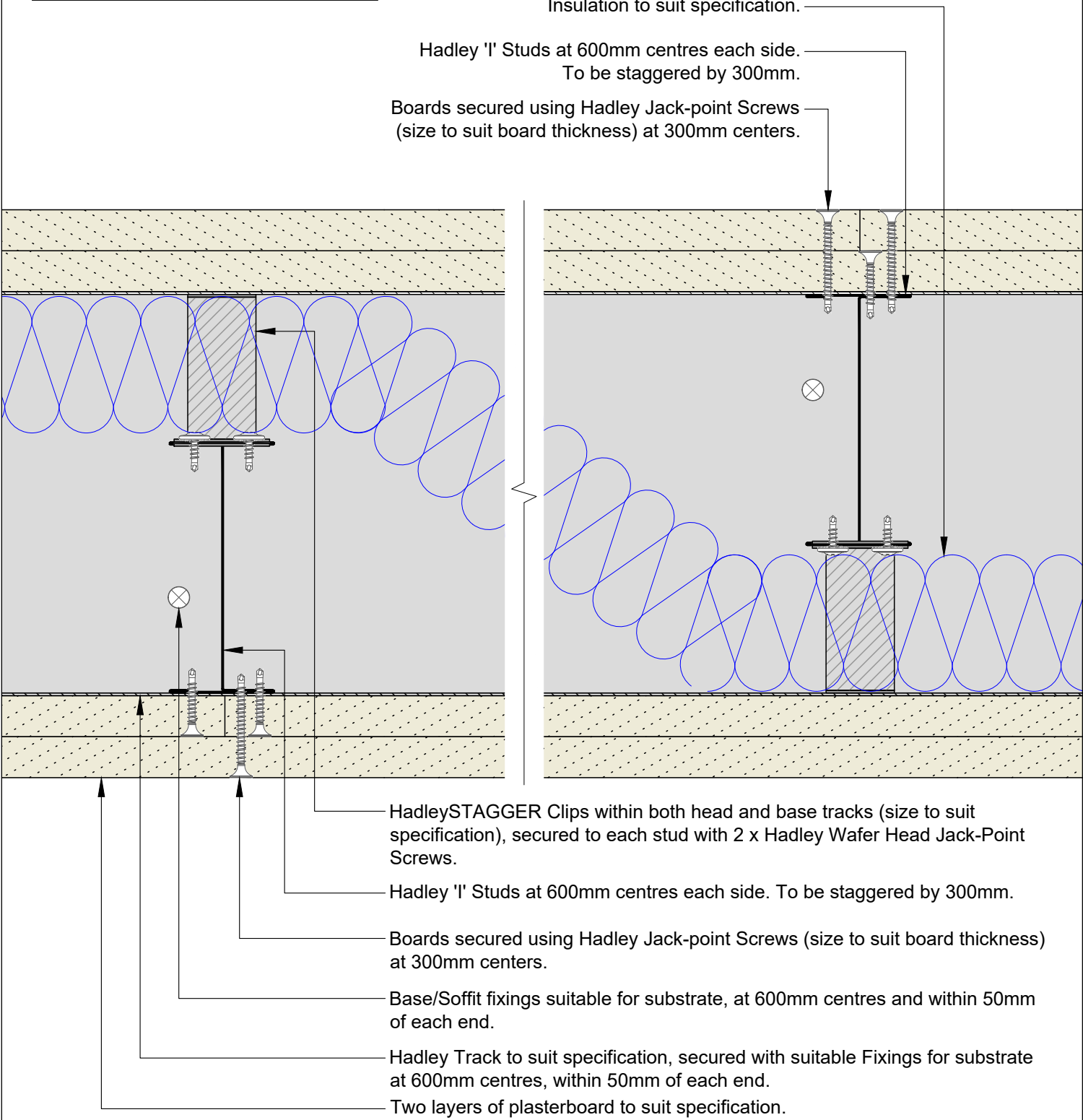


# **Hadley Drylining**

Hadley Standard Detailing

HadleySTAGGER – Double Layer  
2022 Version 1

Board Thickness	Fixing Length
15mm + 15mm	25mm + 42mm




00	MAY22	First Issue	SD	JS	JS	System details to be read in conjunction with Hadley Group project specification pack. All applications to be built in accordance with British Standards, Building Regulations and Hadley Group tested solutions.
Rev:	Date:	Reason for Issue:	Drn:	Chk:	App:	

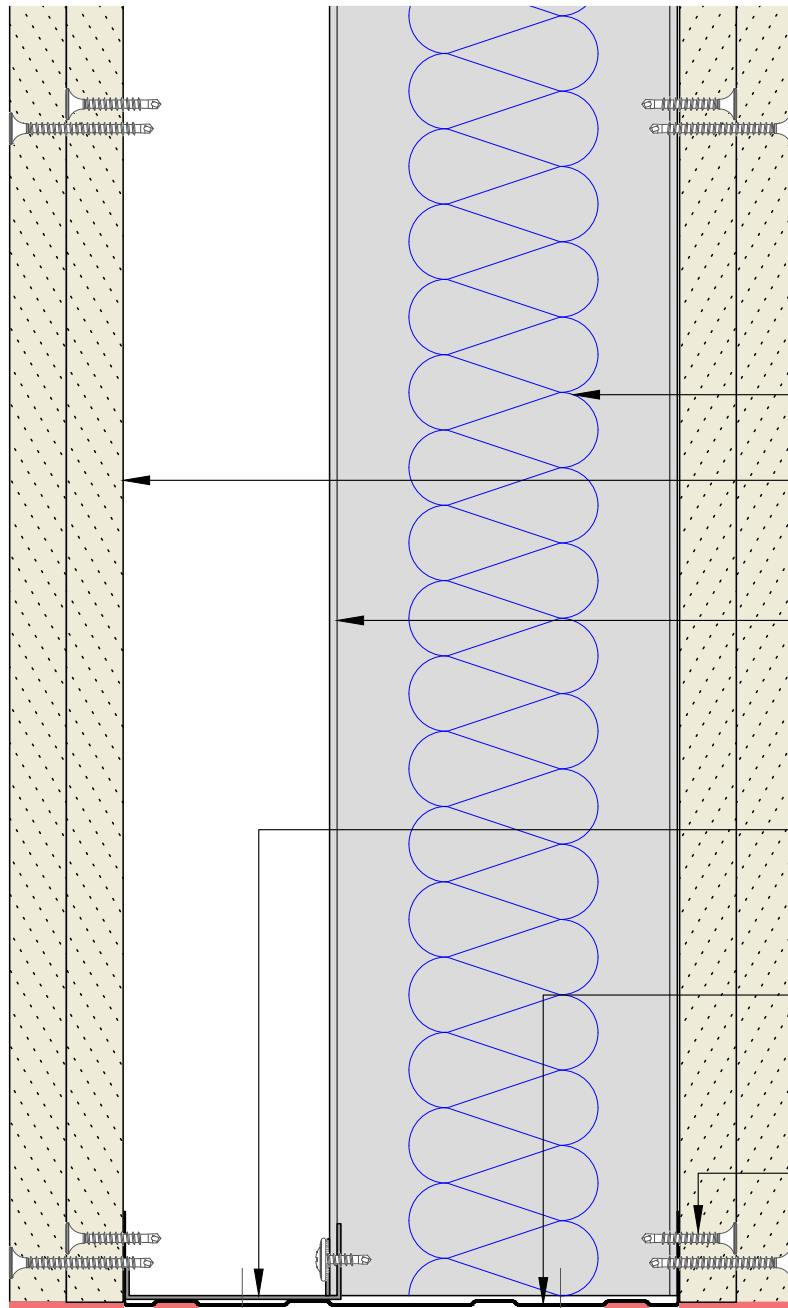


Hadley Group, Downing Street,  
Smethwick, West Midlands B66 2PA  
Tel: +44 (0) 121 555 1329  
E-mail: drylining.technical@hadleygroup.co.uk

Project: Typical System Detail See project specification for exact requirements						
Title: <b>HadleySTAGGER</b> Partition - Double Layer Plan						
Scale: 1:2 @ A4	Date: MAY22	Drawn: SD	Checked: JS	Dwg No: <b>HD-STAGGER-01</b>	Revision: <b>00</b>	

Board Thickness	Fixing Length
15mm + 15mm	25mm + 42mm

 Indicative of Fire Rated Intumescent Acoustic Mastic.



Insulation to suit specification.

Two layers of plasterboard to suit specification. Boards Fixings to other Staggered Stud at 300mm centres.

Hadley 'I' Studs at 600mm centres each side. To be staggered by 300mm.

Two layers of plasterboard to suit specification.

HadleySTAGGER Clips within both head and base tracks (size to suit specification), secured to each stud with 2 x Hadley Wafer Head Jack-Point Screws.

Hadley Base Track to suit specification secured with Base/Soffit fixings suitable for substrate, at 600mm centres and within 50mm of each end.

Boards secured using Hadley Jack-point Screws (size to suit board thickness) at 300mm centers.

00	MAY22	First Issue	SD	JS	JS	System details to be read in conjunction with Hadley Group project specification pack. All applications to be built in accordance with British Standards, Building Regulations and Hadley Group tested solutions.
Rev:	Date:	Reason for Issue:	Drn:	Chk:	App:	



Hadley Group, Downing Street,  
Smethwick, West Midlands B66 2PA

Tel: +44 (0) 121 555 1329

E-mail: drylining.technical@hadleygroup.co.uk

Project:

Typical System Detail  
See project specification for exact requirements

Title:

**HadleySTAGGER**  
Partition - Double Layer  
Base

Scale:

1:2 @ A4

Date:

MAY22

Drawn:

SD

Checked:

JS

Dwg No:

**HD-STAGGER-02**


Revision:

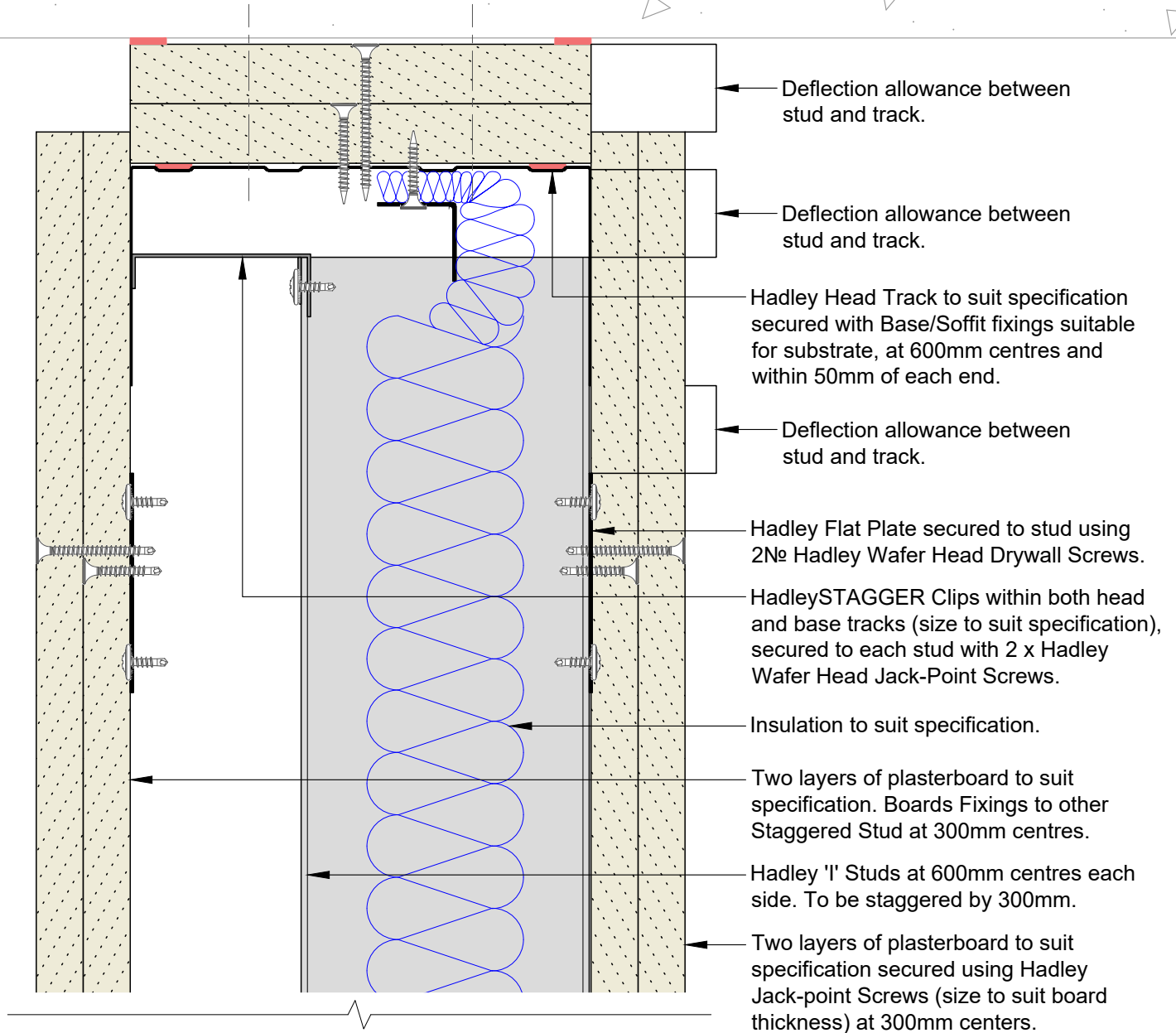
**00**

All performance data and system specifications are for systems constructed with materials & components as shown. The inclusion or substitution of any other manufacturers materials or components could invalidate test data and system performance. The information is provided in good faith and is based upon details received which are assumed to include all relevant facts. No duty of care is owed to the recipient or any other third party and Hadley Industries PLC cannot accept liability in respect of the details shown. None of the content may be distributed or copied directly without prior approval.

Min. Deflection to suit structural engineer design	Min. Head Track Fillet(s)	Hadley Track Flange
5mm	1x15mm Type F Plasterboard	50mm
9mm	1x19mm CoreBoard	50mm
15mm	2x12.5mm Type F Plasterboard	50mm
20mm	2x15mm Type F Plasterboard	50mm
28mm	2x19mm CoreBoard	50mm
35mm	3x15mm Type F Plasterboard	70mm

Board Thickness	Fixing Length
15mm + 15mm	25mm + 42mm

 Indicative of Fire Rated Intumescent Acoustic Mastic.



00	MAY22	First Issue	SD	JS	JS	System details to be read in conjunction with Hadley Group project specification pack. All applications to be built in accordance with British Standards, Building Regulations and Hadley Group tested solutions.
Rev:	Date:	Reason for Issue:	Drn:	Chk:	App:	



Hadley Group, Downing Street,  
Smethwick, West Midlands B66 2PA

Tel: +44 (0) 121 555 1329

E-mail: [drylining.technical@hadleygroup.co.uk](mailto:drylining.technical@hadleygroup.co.uk)

Project:  
Typical System Detail  
See project specification for exact requirements


Title:  
**HadleySTAGGER**  
Partition - Double Layer  
Deflection Head up to 60 min EI Fire Resistance

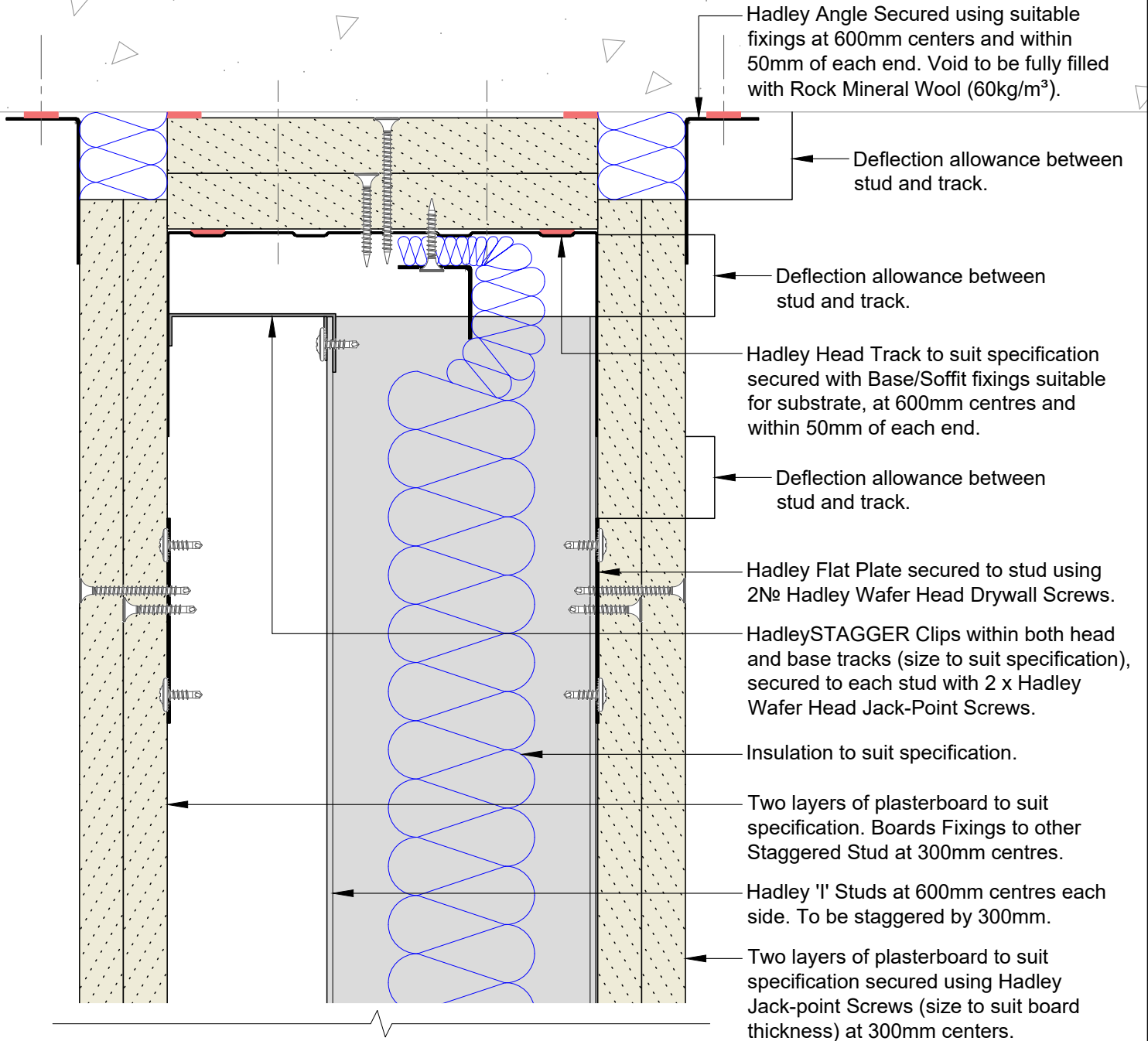
Scale:	Date:	Drawn:	Checked:	Dwg No:	Revision:
1:2 @ A4	MAY22	SD	JS	<b>HD-STAGGER-03</b>	<b>00</b>

All performance data and system specifications are for systems constructed with materials & components as shown. The inclusion or substitution of any other manufacturers materials or components could invalidate test data and system performance. The information is provided in good faith and is based upon details received which are assumed to include all relevant facts. No duty of care is owed to the recipient or any other third party and Hadley Industries PLC cannot accept liability in respect of the details shown. None of the content may be distributed or copied directly without prior approval.

Min. Deflection to suit structural engineer design	Min. Head Track Fillet(s)	Hadley Track Flange
5mm	1x15mm Type F Plasterboard	50mm
9mm	1x19mm CoreBoard	50mm
15mm	2x12.5mm Type F Plasterboard	50mm
20mm	2x15mm Type F Plasterboard	50mm
28mm	2x19mm CoreBoard	50mm
35mm	3x15mm Type F Plasterboard	70mm

Board Thickness	Fixing Length
15mm + 15mm	25mm + 42mm

 Indicative of Fire Rated Intumescent Acoustic Mastic.



00	MAY22	First Issue	SD	JS	JS	System details to be read in conjunction with Hadley Group project specification pack. All applications to be built in accordance with British Standards, Building Regulations and Hadley Group tested solutions.
Rev:	Date:	Reason for Issue:	Drn:	Chk:	App:	



Hadley Group, Downing Street,  
Smethwick, West Midlands B66 2PA

Tel: +44 (0) 121 555 1329

E-mail: drylining.technical@hadleygroup.co.uk

Project:  
Typical System Detail  
See project specification for exact requirements

Title:  
**HadleySTAGGER**  
Partition - Double Layer  
Deflection Head up to 120 min EI Fire Resistance

Scale:	Date:	Drawn:	Checked:	Dwg No:	Revision:
1:2 @ A4	MAY22	SD	JS	<b>HD-STAGGER-04</b>	<b>00</b>

All performance data and system specifications are for systems constructed with materials & components as shown. The inclusion or substitution of any other manufacturers materials or components could invalidate test data and system performance. The information is provided in good faith and is based upon details received which are assumed to include all relevant facts. No duty of care is owed to the recipient or any other third party and Hadley Industries PLC cannot accept liability in respect of the details shown. None of the content may be distributed or copied directly without prior approval.

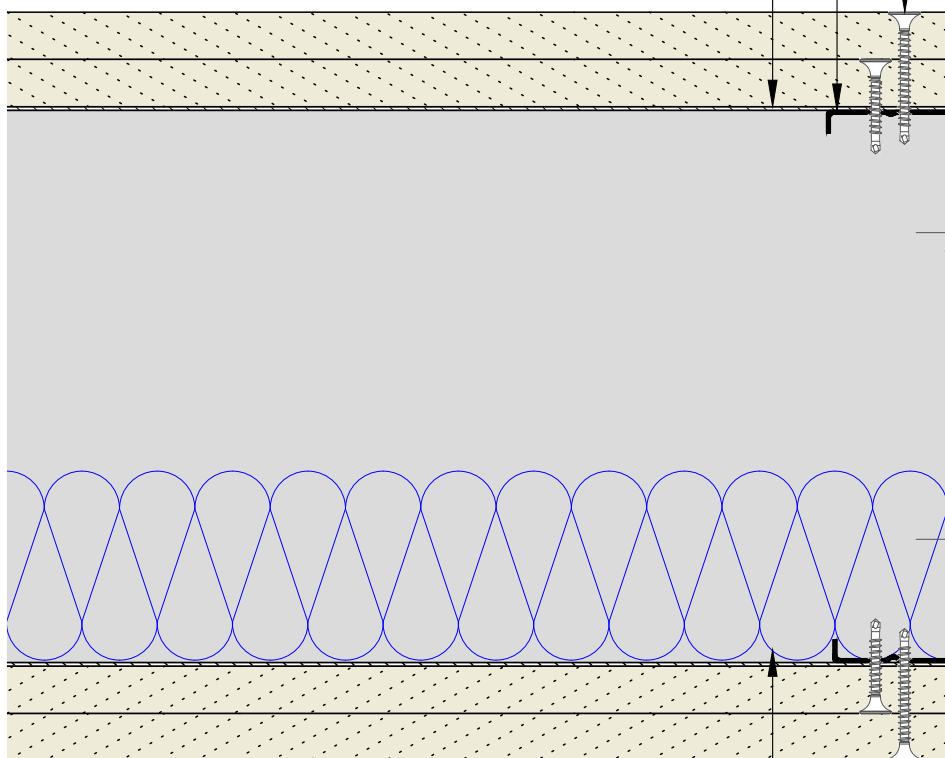
Indicative of Fire Rated  
Intumescent Acoustic Mastic.

Board Thickness	Fixing Length
15mm + 15mm	25mm + 42mm

Two layers of plasterboard to suit specification  
secured using Hadley Jack-point Screws (size  
to suit board thickness) at 300mm centers.

Hadley 'C' Stud to suit specification secured  
with Base/Soffit fixings suitable for substrate, at  
600mm centres and within 50mm of each end.

Hadley Track to suit specification, secured with  
suitable Fixings for substrate at 600mm centres,  
within 50mm of each end.



Insulation to suit specification.

00	MAY22	First Issue	SD	JS	JS	System details to be read in conjunction with Hadley Group project specification pack. All applications to be built in accordance with British Standards, Building Regulations and Hadley Group tested solutions.
Rev:	Date:	Reason for Issue:	Drn:	Chk:	App:	



Hadley Group, Downing Street,  
Smethwick, West Midlands B66 2PA

Tel: +44 (0) 121 555 1329

E-mail: drylining.technical@hadleygroup.co.uk

Project:

Typical System Detail  
See project specification for exact requirements

Title:

**HadleySTAGGER**  
Partition - Double Layer  
Abutment to Concrete / Blockwork

Scale:

1:2 @ A4

Date:

MAY22

Drawn:

SD

Checked:

JS

Dwg No:

**HD-STAGGER-05**

Revision:

**00**

All performance data and system specifications are for systems constructed with materials & components as shown. The inclusion or substitution of any other manufacturers materials or components could invalidate test data and system performance. The information is provided in good faith and is based upon details received which are assumed to include all relevant facts. No duty of care is owed to the recipient or any other third party and Hadley Industries PLC cannot accept liability in respect of the details shown. None of the content may be distributed or copied directly without prior approval.



**HADLEY TECHNICAL SUPPORT**

☎ +44 (0) 121 555 1329

✉ [drylining.technical@hadleygroup.com](mailto:drylining.technical@hadleygroup.com)