



Hadley Drylining Standard Details

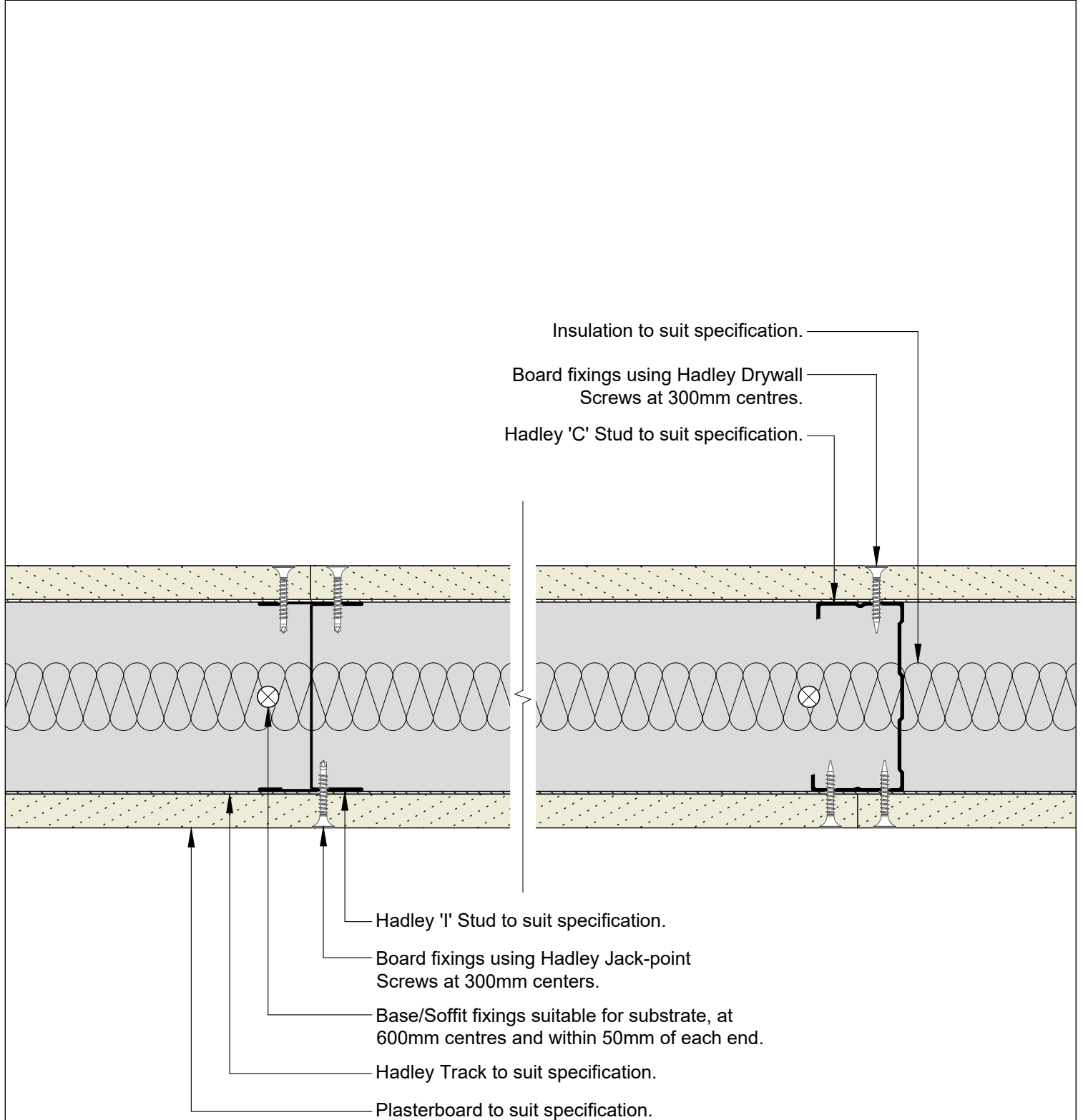
HadleySOLO – Single Layer
2022 Version 1

HADLEY DRYLINING SALES

☎ +44 (0) 121 555 1300
✉ dryliningsales@hadleygroup.com

HADLEY TECHNICAL SUPPORT

☎ +44 (0) 121 555 1329
✉ drylining.technical@hadleygroup.com



00	JUL21	First Issue	FM	JS	JS	System details to be read in conjunction with Hadley Group project specification pack. All applications to be built in accordance with British Standards, Building Regulations and Hadley Group tested solutions.
Rev:	Date:	Reason for Issue:	Drn:	Chk:	App:	



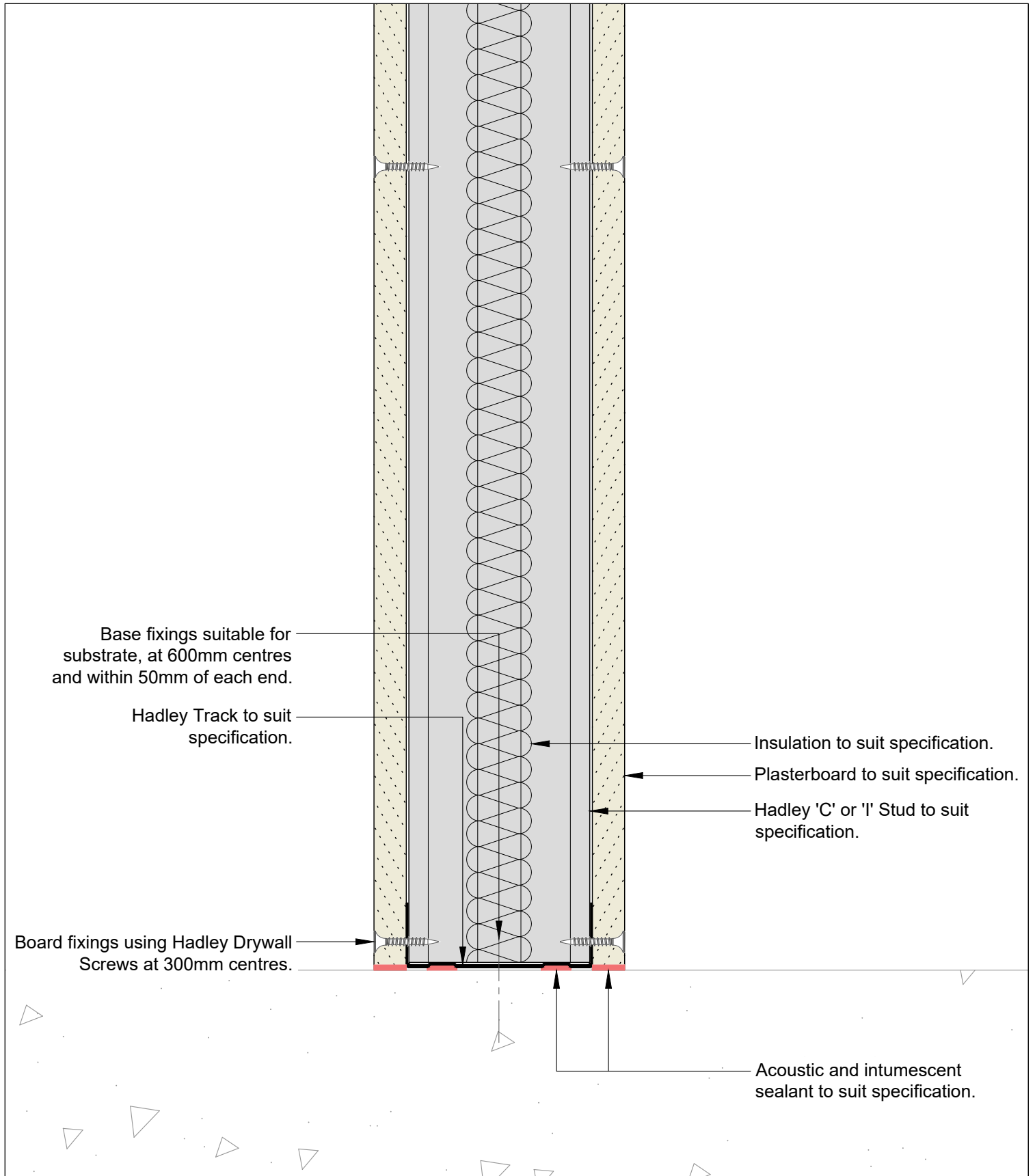
Hadley Group, Downing Street,
Smethwick, West Midlands B66 2PA
Tel: +44 (0) 121 555 1329
E-mail: drylining.technical@hadleygroup.co.uk

Project:
Typical System Detail
See project specification for exact requirements

Title:
Hadley Solo
Partition - Single Layer
Plan

Scale:	Date:	Drawn:	Checked:	Dwg No:	Revision:
1:2 @ A4	Jul 21	FM	JS	HD-SOLO-SINGLE-01	00

All performance data and system specifications are for systems constructed with materials & components as shown. The inclusion or substitution of any other manufacturers materials or components could invalidate test data and system performance. The information is provided in good faith and is based upon details received which are assumed to include all relevant facts. No duty of care is owed to the recipient or any other third party and Hadley Industries PLC cannot accept liability in respect of the details shown. None of the content may be distributed or copied directly without prior approval.



Base fixings suitable for substrate, at 600mm centres and within 50mm of each end.

Hadley Track to suit specification.

Insulation to suit specification.
Plasterboard to suit specification.
Hadley 'C' or 'I' Stud to suit specification.

Board fixings using Hadley Drywall Screws at 300mm centres.

Acoustic and intumescent sealant to suit specification.

00	JUL21	First Issue	FM	JS	JS	System details to be read in conjunction with Hadley Group project specification pack. All applications to be built in accordance with British Standards, Building Regulations and Hadley Group tested solutions.
Rev:	Date:	Reason for Issue:	Drn:	Chk:	App:	



Hadley Group, Downing Street,
Smethwick, West Midlands B66 2PA

Tel: +44 (0) 121 555 1329

E-mail: drylining.technical@hadleygroup.co.uk

Project: Typical System Detail
See project specification for exact requirements

Title: **Hadley Solo**
Partition - Single Layer
Base

Scale:	Date:	Drawn:	Checked:	Dwg No:	Revision:
1:2 @ A4	Jul 21	FM	JS	HD-SOLO-SINGLE-02	00

All performance data and system specifications are for systems constructed with materials & components as shown. The inclusion or substitution of any other manufacturers materials or components could invalidate test data and system performance. The information is provided in good faith and is based upon details received which are assumed to include all relevant facts. No duty of care is owed to the recipient or any other third party and Hadley Industries PLC cannot accept liability in respect of the details shown. None of the content may be distributed or copied directly without prior approval.

Soffit fixings suitable for substrate, at 600mm centres and within 50mm of each end.

Hadley Track to suit specification.

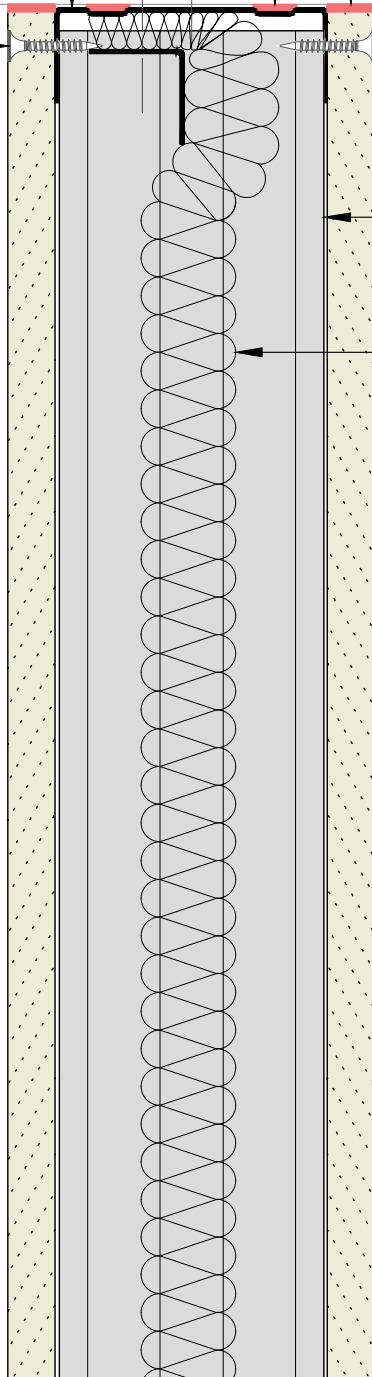
Acoustic and intumescent sealant to suit specification.

Board fixings using Hadley Drywall Screws at 300mm centres.

Hadley 'C' or 'I' Stud to suit specification.

Plasterboard to suit specification.

Insulation to suit specification, hung from top of partition using Hadley 25x25mm Steel Angle, secured through to soffit using suitable fixings within 50mm of each end.



00	JUL21	First Issue	FM	JS	JS	System details to be read in conjunction with Hadley Group project specification pack. All applications to be built in accordance with British Standards, Building Regulations and Hadley Group tested solutions.
Rev:	Date:	Reason for Issue:	Drn:	Chk:	App:	



Hadley Group, Downing Street,
Smethwick, West Midlands B66 2PA

Tel: +44 (0) 121 555 1329

E-mail: drylining.technical@hadleygroup.co.uk

Project:

Typical System Detail
See project specification for exact requirements

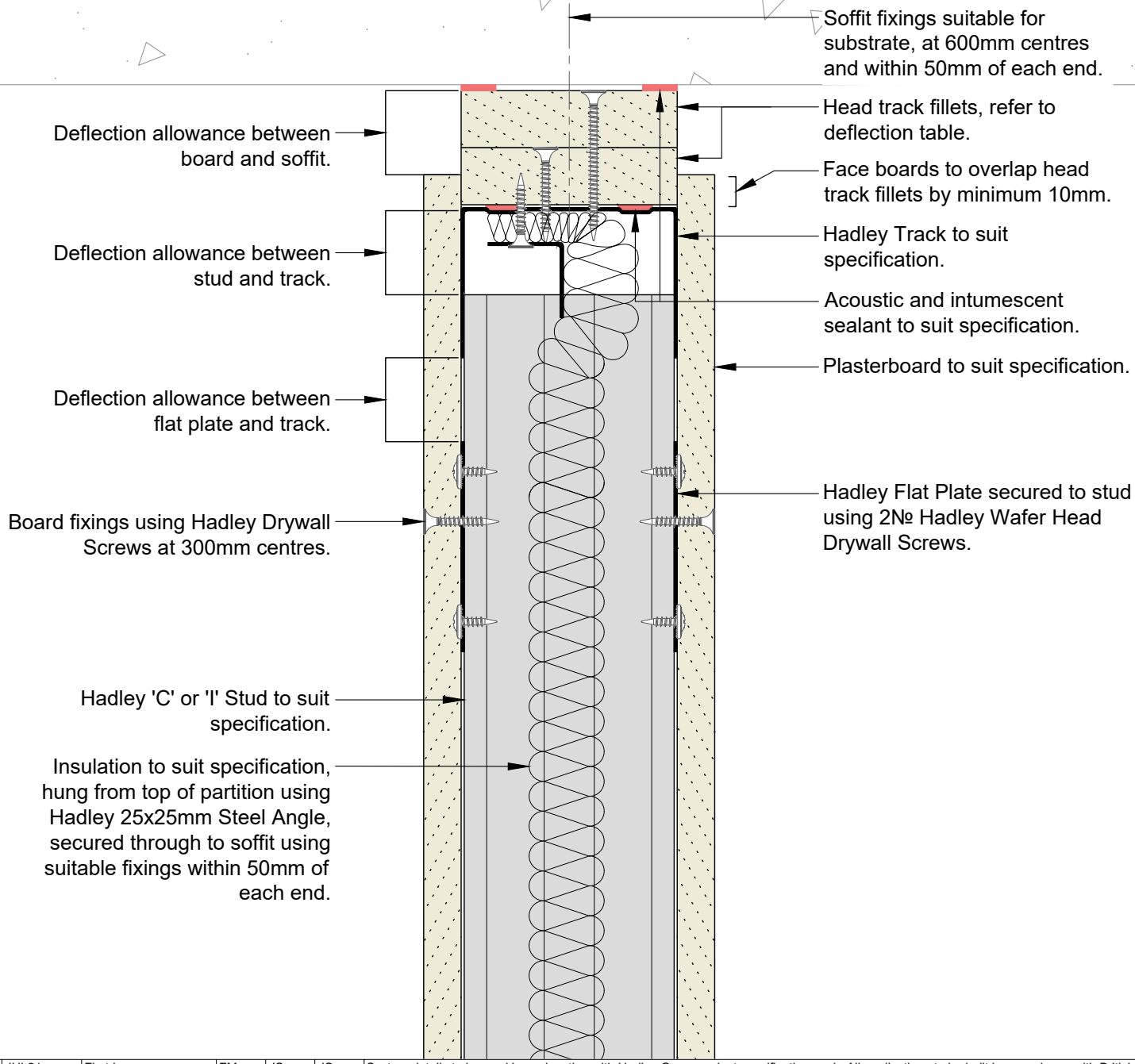
Title:

Hadley Solo
Partition - Single Layer
Fixed Head

Scale:	Date:	Drawn:	Checked:	Dwg No:	Revision:
1:2 @ A4	Jul 21	FM	JS	HD-SOLO-SINGLE-03	00

All performance data and system specifications are for systems constructed with materials & components as shown. The inclusion or substitution of any other manufacturers materials or components could invalidate test data and system performance. The information is provided in good faith and is based upon details received which are assumed to include all relevant facts. No duty of care is owed to the recipient or any other third party and Hadley Industries PLC cannot accept liability in respect of the details shown. None of the content may be distributed or copied directly without prior approval.

Min. Deflection to suit structural engineer design	Min. Head Track Fillet(s)	Hadley Track Flange
5mm	1x15mm Type F Plasterboard	50mm
9mm	1x19mm CoreBoard	50mm
15mm	2x12.5mm Type F Plasterboard	50mm
20mm	2x15mm Type F Plasterboard	50mm
28mm	2x19mm CoreBoard	50mm
35mm	3x15mm Type F Plasterboard	70mm



00 JUL21 First Issue FM JS JS System details to be read in conjunction with Hadley Group project specification pack. All applications to be built in accordance with British Standards, Building Regulations and Hadley Group tested solutions.



Hadley Group, Downing Street,
Smethwick, West Midlands B66 2PA
Tel: +44 (0) 121 555 1329
E-mail: drylining.technical@hadleygroup.co.uk

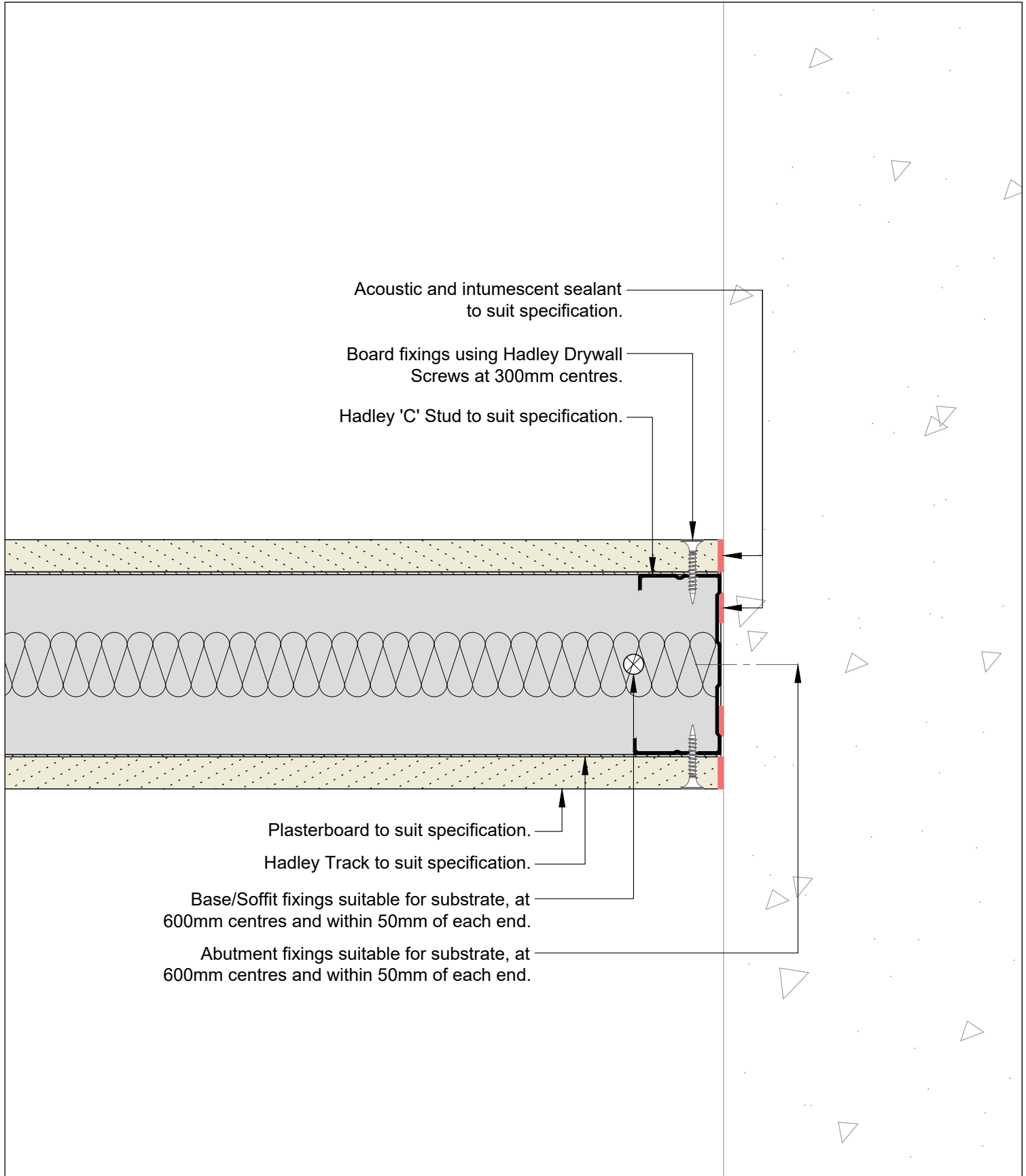
Project: Typical System Detail
See project specification for exact requirements

Title: **Hadley Solo**
Partition - Single Layer
Deflection Head up to 60 min EI Fire Resistance

Scale: 1:2 @ A4	Date: Jul 21	Drawn: FM	Checked: JS	Dwg No: HD-SOLO-SINGLE-04	Revision: 00
-----------------	--------------	-----------	-------------	---------------------------	--------------

All performance data and system specifications are for systems constructed with materials & components as shown. The inclusion or substitution of any other manufacturers materials or components could invalidate test data and system performance. The information is provided in good faith and is based upon details received which are assumed to include all relevant facts. No duty of care is owed to the recipient or any other third party and Hadley Industries PLC cannot accept liability in respect of the details shown. None of the content may be distributed or copied directly without prior approval.

© 2021 Hadley Industries Holdings Limited



00	JUL21	First Issue	FM	JS	JS	System details to be read in conjunction with Hadley Group project specification pack. All applications to be built in accordance with British Standards, Building Regulations and Hadley Group tested solutions.
Rev:	Date:	Reason for Issue:	Drn:	Chk:	App:	



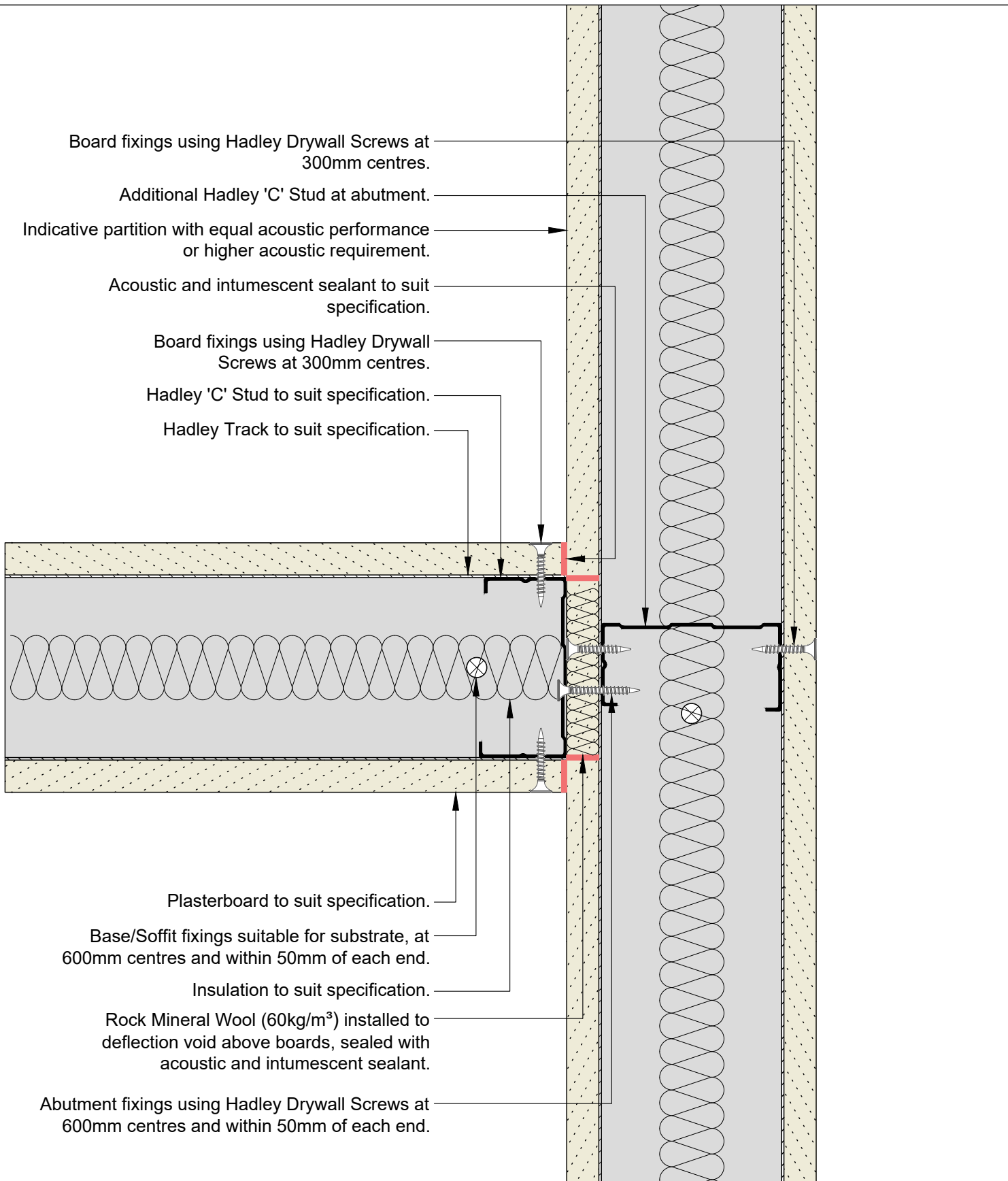
Hadley Group, Downing Street,
Smethwick, West Midlands B66 2PA
Tel: +44 (0) 121 555 1329
E-mail: drylining.technical@hadleygroup.co.uk

Project:
Typical System Detail
See project specification for exact requirements

Title:
Hadley Solo
Partition - Single Layer
Abutment to Concrete/Blockwork

Scale:	Date:	Drawn:	Checked:	Dwg No:	Revision:
1:2 @ A4	Jul 21	FM	JS	HD-SOLO-SINGLE-06	00

All performance data and system specifications are for systems constructed with materials & components as shown. The inclusion or substitution of any other manufacturers materials or components could invalidate test data and system performance. The information is provided in good faith and is based upon details received which are assumed to include all relevant facts. No duty of care is owed to the recipient or any other third party and Hadley Industries PLC cannot accept liability in respect of the details shown. None of the content may be distributed or copied directly without prior approval.



Board fixings using Hadley Drywall Screws at 300mm centres.

Additional Hadley 'C' Stud at abutment.

Indicative partition with equal acoustic performance or higher acoustic requirement.

Acoustic and intumescent sealant to suit specification.

Board fixings using Hadley Drywall Screws at 300mm centres.

Hadley 'C' Stud to suit specification.

Hadley Track to suit specification.

Plasterboard to suit specification.

Base/Soffit fixings suitable for substrate, at 600mm centres and within 50mm of each end.

Insulation to suit specification.

Rock Mineral Wool (60kg/m³) installed to deflection void above boards, sealed with acoustic and intumescent sealant.

Abutment fixings using Hadley Drywall Screws at 600mm centres and within 50mm of each end.

00	JUL21	First Issue	FM	JS	JS	System details to be read in conjunction with Hadley Group project specification pack. All applications to be built in accordance with British Standards, Building Regulations and Hadley Group tested solutions.
Rev:	Date:	Reason for Issue:	Drn:	Chk:	App:	



Hadley Group, Downing Street,
Smethwick, West Midlands B66 2PA

Tel: +44 (0) 121 555 1329

E-mail: drylining.technical@hadleygroup.co.uk

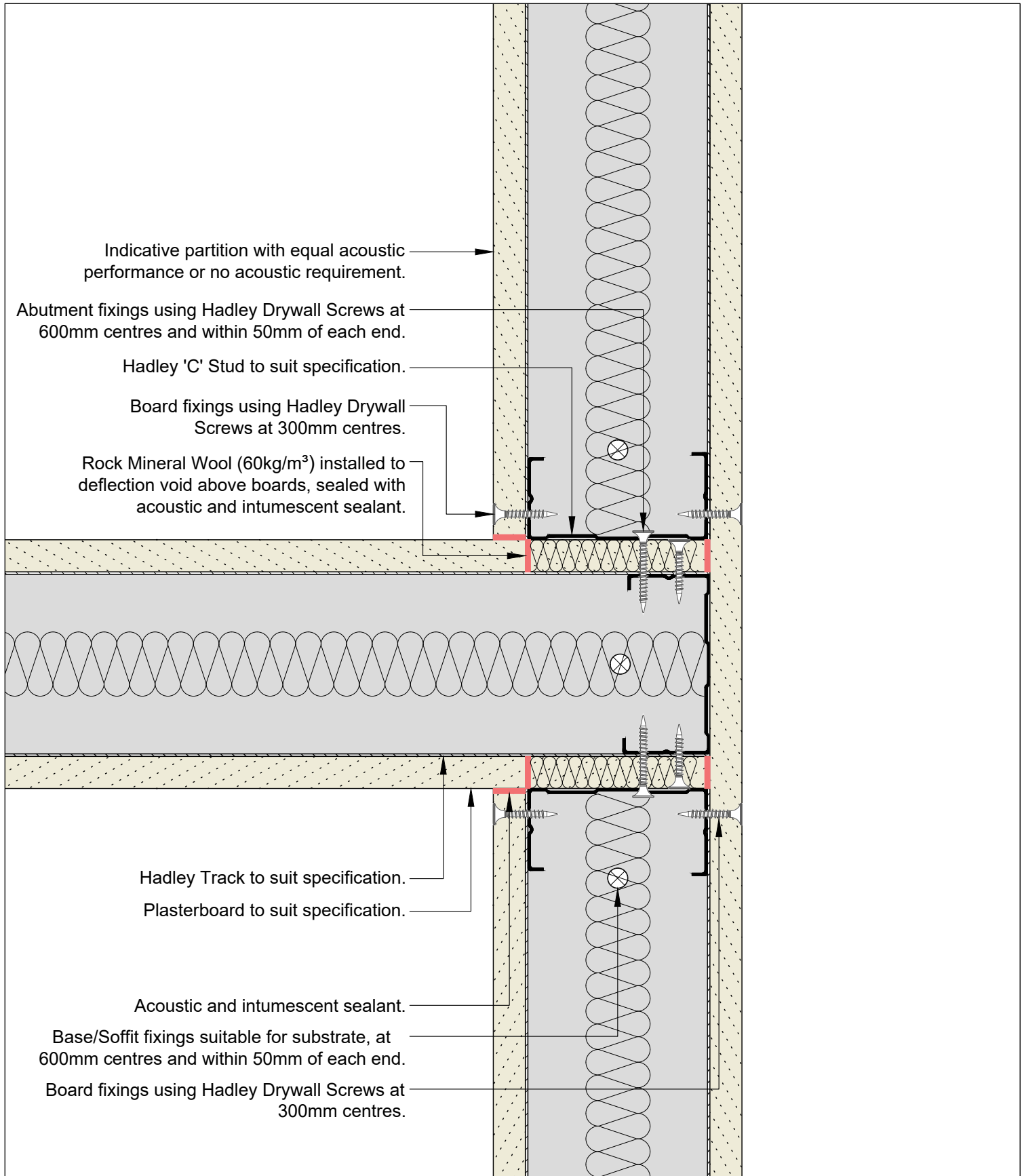
Project: Typical System Detail

See project specification for exact requirements

Title:
Hadley Solo
Partition - Single Layer
Abutment to Drylining Partition

Scale:	Date:	Drawn:	Checked:	Dwg No:	Revision:
1:2 @ A4	Jul 21	FM	JS	HD-SOLO-SINGLE-07	00

All performance data and system specifications are for systems constructed with materials & components as shown. The inclusion or substitution of any other manufacturers materials or components could invalidate test data and system performance. The information is provided in good faith and is based upon details received which are assumed to include all relevant facts. No duty of care is owed to the recipient or any other third party and Hadley Industries PLC cannot accept liability in respect of the details shown. None of the content may be distributed or copied directly without prior approval.



00	JUL21	First Issue	FM	JS	JS	System details to be read in conjunction with Hadley Group project specification pack. All applications to be built in accordance with British Standards, Building Regulations and Hadley Group tested solutions.				
Rev:	Date:	Reason for Issue:	Drn:	Chk:	App:					



Hadley Group, Downing Street,
Smethwick, West Midlands B66 2PA
Tel: +44 (0) 121 555 1329
E-mail: drylining.technical@hadleygroup.co.uk

Project:
Typical System Detail
 See project specification for exact requirements

Title:
Hadley Solo
 Partition - Single Layer
 Abutment to Drylining Partition - Flanking detail

Scale:	Date:	Drawn:	Checked:	Dwg No:	Revision:
1:2 @ A4	Jul 21	FM	JS	HD-SOLO-SINGLE-08	00

All performance data and system specifications are for systems constructed with materials & components as shown. The inclusion or substitution of any other manufacturers materials or components could invalidate test data and system performance. The information is provided in good faith and is based upon details received which are assumed to include all relevant facts. No duty of care is owed to the recipient or any other third party and Hadley Industries PLC cannot accept liability in respect of the details shown. None of the content may be distributed or copied directly without prior approval.

© 2021 Hadley Industries Holdings Limited

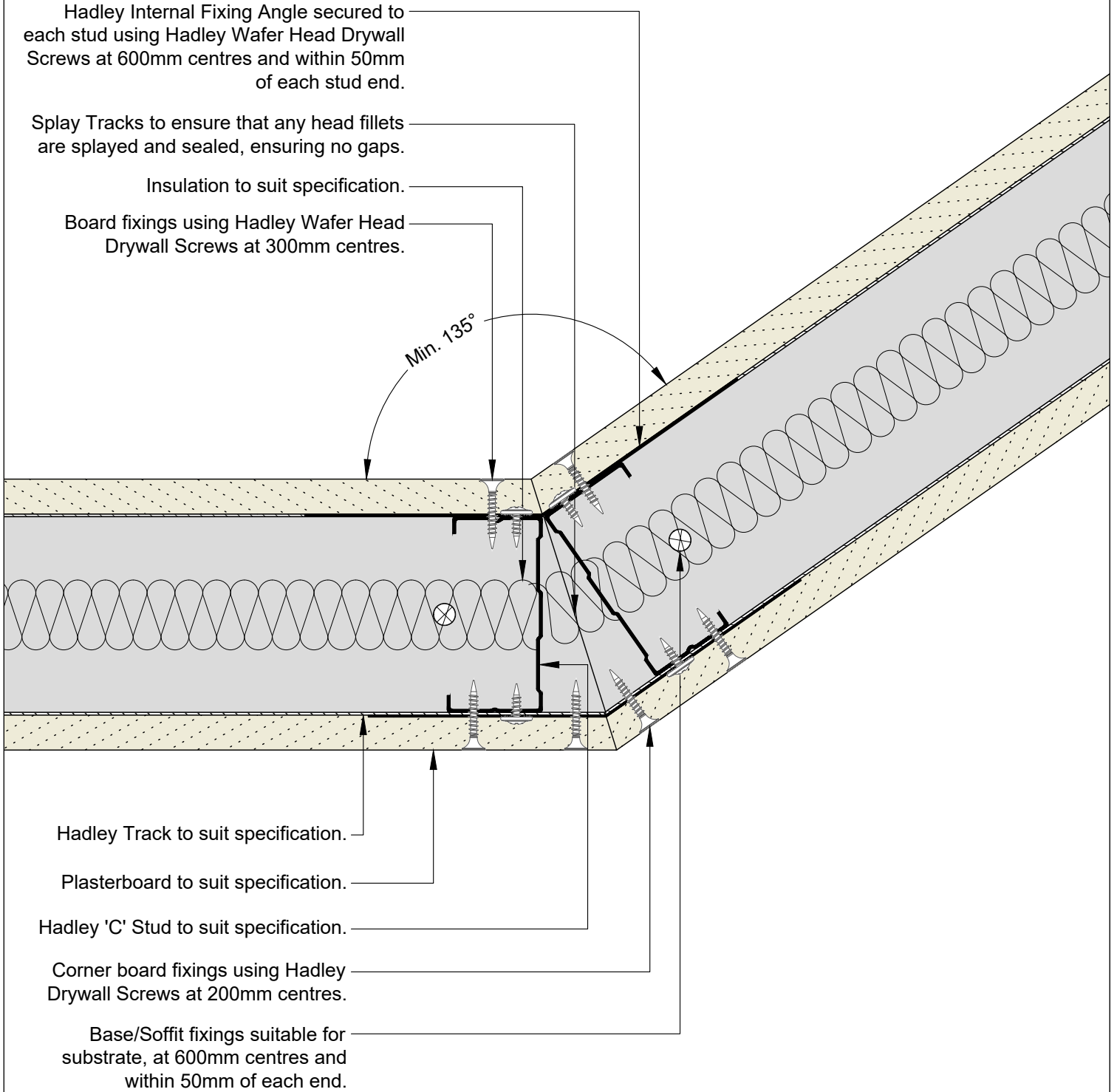
Hadley Internal Fixing Angle secured to each stud using Hadley Wafer Head Drywall Screws at 600mm centres and within 50mm of each stud end.

Splay Tracks to ensure that any head fillets are splayed and sealed, ensuring no gaps.

Insulation to suit specification.

Board fixings using Hadley Wafer Head Drywall Screws at 300mm centres.

Min. 135°



Hadley Track to suit specification.

Plasterboard to suit specification.

Hadley 'C' Stud to suit specification.

Corner board fixings using Hadley Drywall Screws at 200mm centres.

Base/Soffit fixings suitable for substrate, at 600mm centres and within 50mm of each end.

00	JUL21	First Issue	FM	JS	JS	System details to be read in conjunction with Hadley Group project specification pack. All applications to be built in accordance with British Standards, Building Regulations and Hadley Group tested solutions.
Rev:	Date:	Reason for Issue:	Drn:	Chk:	App:	



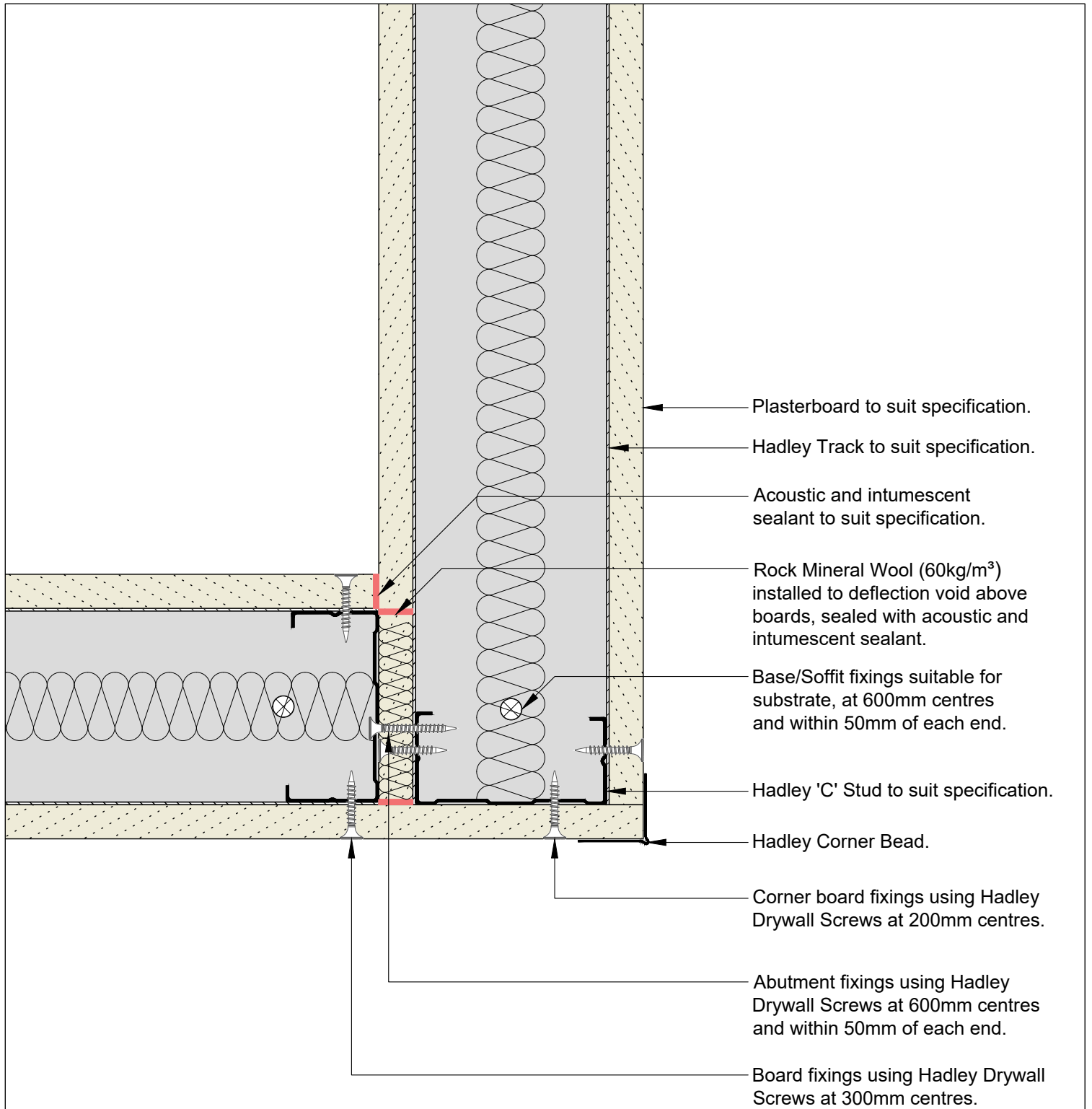
Hadley Group, Downing Street,
Smethwick, West Midlands B66 2PA
Tel: +44 (0) 121 555 1329
E-mail: drylining.technical@hadleygroup.co.uk

Project:
Typical System Detail
See project specification for exact requirements

Title:
Hadley Solo
Partition - Single Layer
Splayed Corner

Scale:	Date:	Drawn:	Checked:	Dwg No:	Revision:
1:2 @ A4	Jul 21	FM	JS	HD-SOLO-SINGLE-09	00

All performance data and system specifications are for systems constructed with materials & components as shown. The inclusion or substitution of any other manufacturers materials or components could invalidate test data and system performance. The information is provided in good faith and is based upon details received which are assumed to include all relevant facts. No duty of care is owed to the recipient or any other third party and Hadley Industries PLC cannot accept liability in respect of the details shown. None of the content may be distributed or copied directly without prior approval.



00	JUL21	First Issue	FM	JS	JS	System details to be read in conjunction with Hadley Group project specification pack. All applications to be built in accordance with British Standards, Building Regulations and Hadley Group tested solutions.
Rev:	Date:	Reason for Issue:	Drn:	Chk:	App:	



Hadley Group, Downing Street,
Smethwick, West Midlands B66 2PA
Tel: +44 (0) 121 555 1329
E-mail: drylining.technical@hadleygroup.co.uk

Project: Typical System Detail See project specification for exact requirements						
Title: Hadley Solo Partition - Single Layer 90° Corner						
Scale:	Date:	Drawn:	Checked:	Dwg No:	Revision:	
1:2 @ A4	Jul 21	FM	JS	HD-SOLO-SINGLE-10	00	

All performance data and system specifications are for systems constructed with materials & components as shown. The inclusion or substitution of any other manufacturers materials or components could invalidate test data and system performance. The information is provided in good faith and is based upon details received which are assumed to include all relevant facts. No duty of care is owed to the recipient or any other third party and Hadley Industries PLC cannot accept liability in respect of the details shown. None of the content may be distributed or copied directly without prior approval.

Stud and track depths and gauge to suit specification.
Fixing type to suit metalwork gauge.

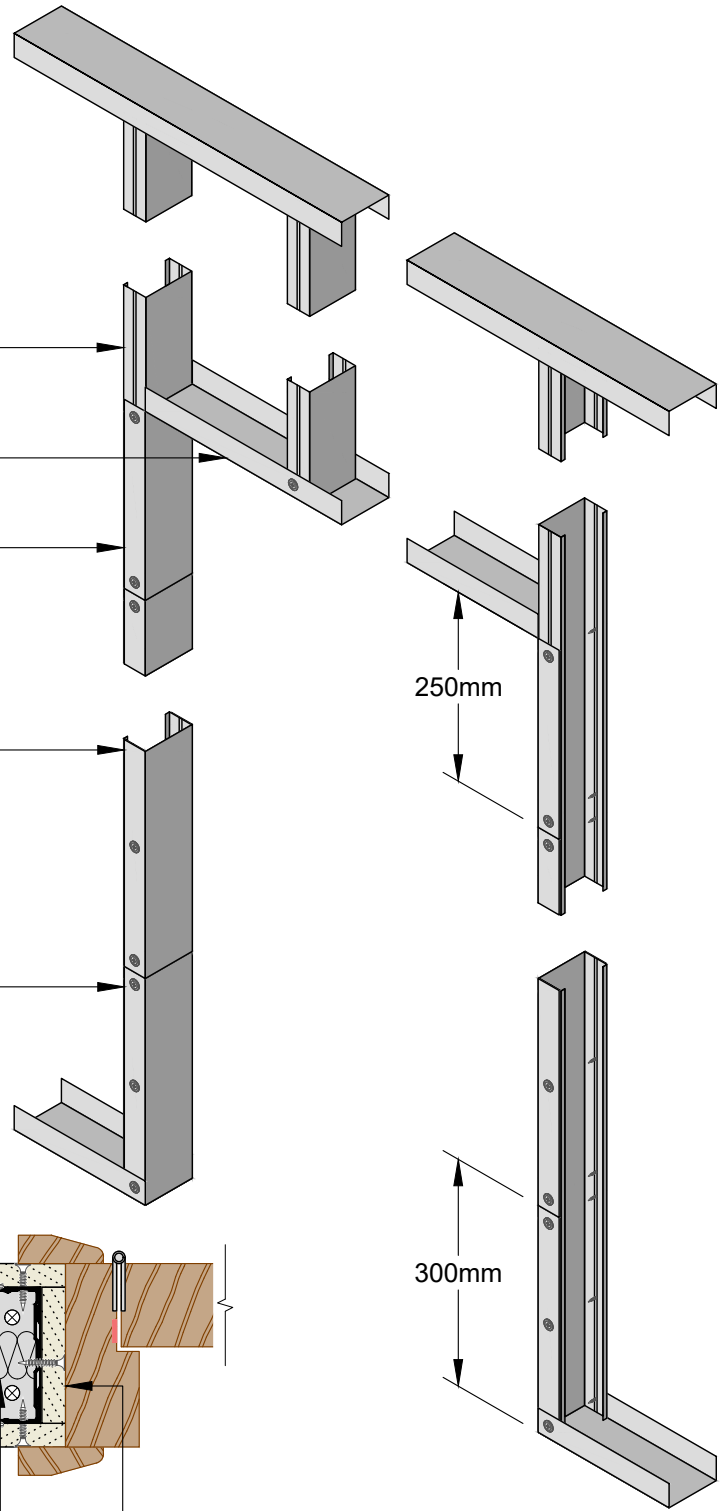
Avoid board joint located on the door jamb.

Hadley Track to suit specification.
Lintel detail to suit opening width.

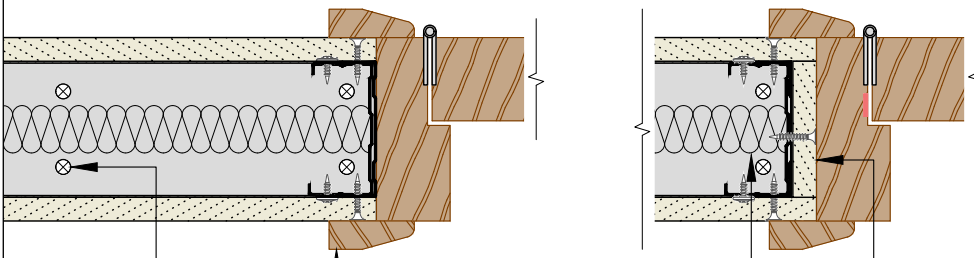
Hadley Track cut and bent to extend
250mm down stud, fixed through
both flanges using 2№ Hadley Wafer
Head Drywall Screws each side.

Hadley Track sleeved over stud
between returned channels at opening
head & base, fixed through both
flanges using Hadley Wafer Head
Drywall Screws at 300mm centres and
within 50mm of each end each side.

Hadley Track cut and bent to extend
vertically 300mm, fixed through both
flanges using 3№ Hadley Wafer
Head Drywall Screws each side.



Plan View



Indicative door frame and
architraves by others.
Base track fixed with pairs of
suitable fixings 150mm apart.

For fire rated openings, apply
plasterboard as per face board
specification to the reveals.
Timber fillets, omitted for clarity, within door
jamb to suit door manufacturers application
requirements and tested solution.

00 JUL21 First Issue FM JS JS System details to be read in conjunction with Hadley Group project specification pack. All applications to be built in accordance with British Standards, Building Regulations and Hadley Group tested solutions.

Rev: Date: Reason for Issue: Drn: Chk: App: Project:



Hadley Group, Downing Street,
Smethwick, West Midlands B66 2PA
Tel: +44 (0) 121 555 1329
E-mail: drylining.technical@hadleygroup.co.uk

Typical System Detail
See project specification for exact requirements

Title:
Hadley Solo
Partition - Single Layer
Doorway 0-60 kg

Scale:	Date: Jul 21	Drawn: FM	Checked: JS	Dwg No: HD-SOLO-SINGLE-11	Revision: 00
--------	-----------------	--------------	----------------	-------------------------------------	------------------------

All performance data and system specifications are for systems constructed with materials & components as shown. The inclusion or substitution of any other manufacturers materials or components could invalidate test data and system performance. The information is provided in good faith and is based upon details received which are assumed to include all relevant facts. No duty of care is owed to the recipient or any other third party and Hadley Industries PLC cannot accept liability in respect of the details shown. None of the content may be distributed or copied directly without prior approval.

Stud and track depths and gauge to suit specification.
Fixing type to suit metalwork gauge.

Additional Hadley Stud located up to 150mm from jamb stud.

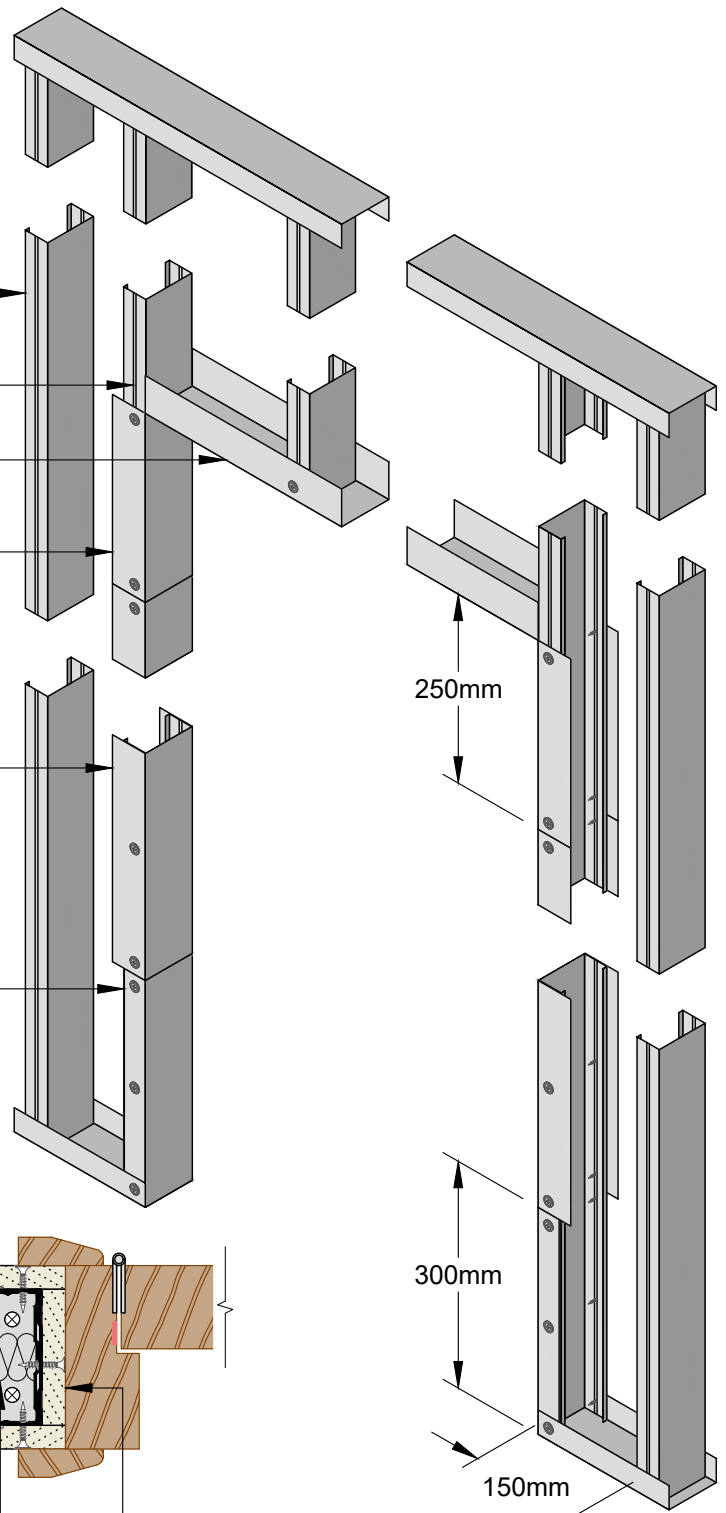
Avoid board joint located on the door jamb.

Hadley Track to suit specification.
Lintel detail to suit opening width.

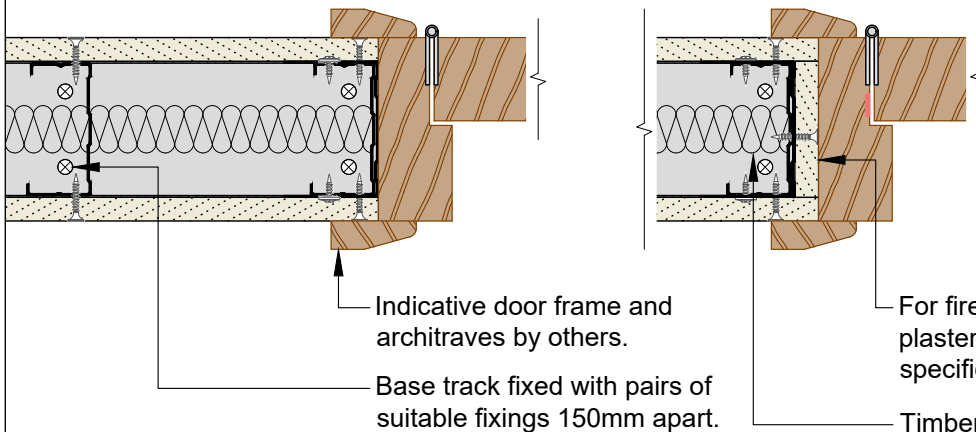
Hadley Track cut and bent to extend 250mm down stud, fixed through both flanges using 2N^o Hadley Wafer Head Drywall Screws each side.

Hadley Track sleeved over stud between returned channels at opening head & base, fixed through both flanges using Hadley Wafer Head Drywall Screws at 300mm centres and within 50mm of each end each side.

Hadley Track cut and bent to extend vertically 300mm, fixed through both flanges using 3N^o Hadley Wafer Head Drywall Screws each side.



Plan View



Indicative door frame and architraves by others.

Base track fixed with pairs of suitable fixings 150mm apart.

For fire rated openings, apply plasterboard as per face board specification to the reveals.

Timber fillets, omitted for clarity, within door jamb to suit door manufacturers application requirements and tested solution

00	JUL21	First Issue	FM	JS	JS	System details to be read in conjunction with Hadley Group project specification pack. All applications to be built in accordance with British Standards, Building Regulations and Hadley Group tested solutions.
Rev:	Date:	Reason for Issue:	Drn:	Chk:	App:	



Hadley Group, Downing Street,
Smethwick, West Midlands B66 2PA

Tel: +44 (0) 121 555 1329

E-mail: drylining.technical@hadleygroup.co.uk

Project:

Typical System Detail
See project specification for exact requirements

Title:

Hadley Solo
Partition - Single Layer
Doorway 61-100 kg

Scale:

Date:

Jul 21

Drawn:

FM

Checked:

JS

Dwg No:

HD-SOLO-SINGLE-12

Revision:

00

All performance data and system specifications are for systems constructed with materials & components as shown. The inclusion or substitution of any other manufacturers materials or components could invalidate test data and system performance. The information is provided in good faith and is based upon details received which are assumed to include all relevant facts. No duty of care is owed to the recipient or any other third party and Hadley Industries PLC cannot accept liability in respect of the details shown. None of the content may be distributed or copied directly without prior approval.



HADLEY TECHNICAL SUPPORT

☎ +44 (0) 121 555 1329

✉ drylining.technical@hadleygroup.com