



# Hadley Drylining Standard Details

HadleyHUSH – Resilient Bar – Two Sided  
2022 Version 1

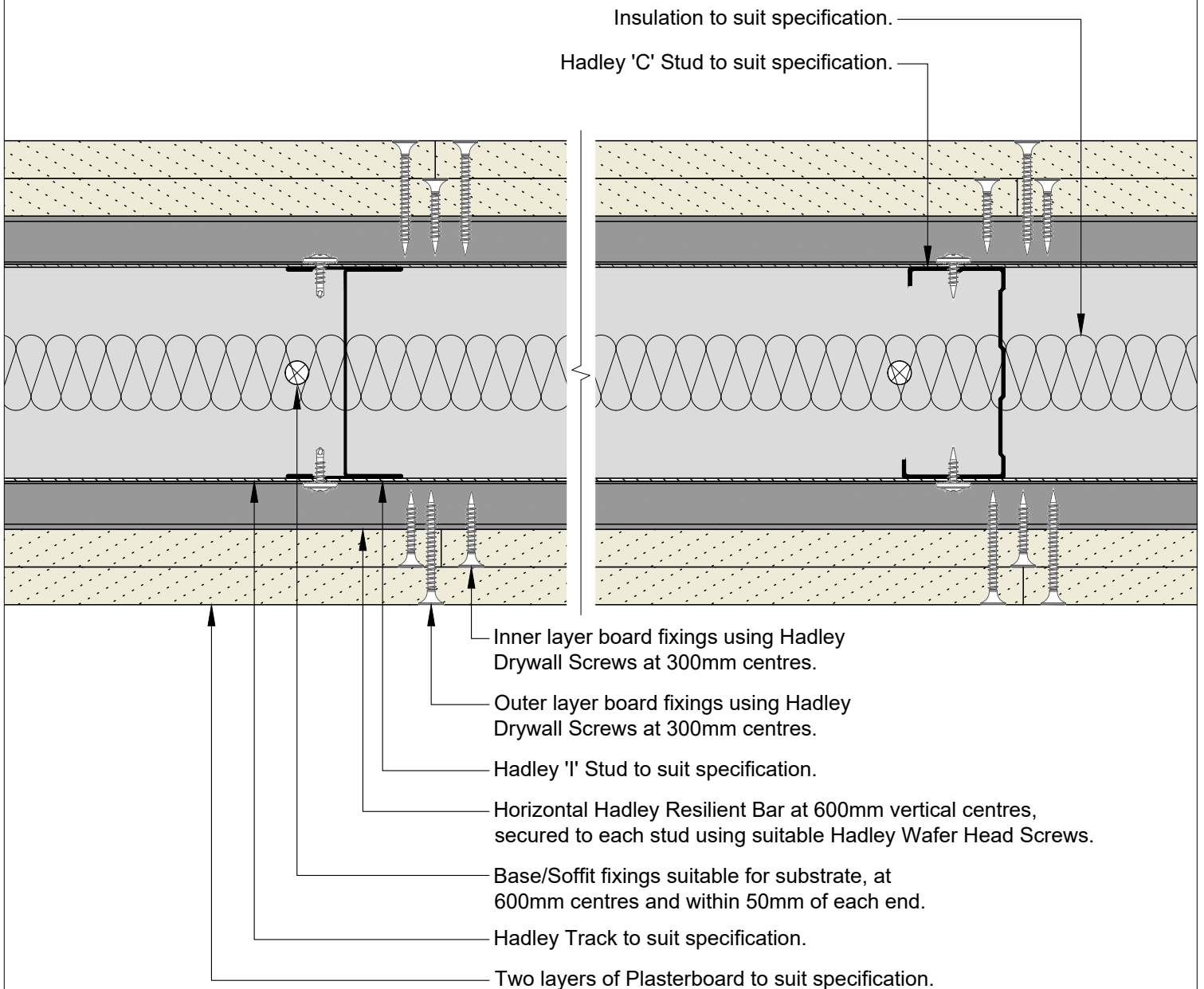
## **HADLEY DRYLINING SALES**

☎ +44 (0) 121 555 1300  
✉ [dryliningsales@hadleygroup.com](mailto:dryliningsales@hadleygroup.com)

## **HADLEY TECHNICAL SUPPORT**

☎ +44 (0) 121 555 1329  
✉ [drylining.technical@hadleygroup.com](mailto:drylining.technical@hadleygroup.com)

Board Thickness	Fixing Length
≤15mm	25mm
12.5mm + 12.5mm	25mm + 38mm
12.5mm + 15mm	25mm + 38mm
15mm + 15mm	25mm + 42mm



00	JUL21	First Issue	FM	JS	JS	System details to be read in conjunction with Hadley Group project specification pack. All applications to be built in accordance with British Standards, Building Regulations and Hadley Group tested solutions.
Rev:	Date:	Reason for Issue:	Drn:	Chk:	App:	

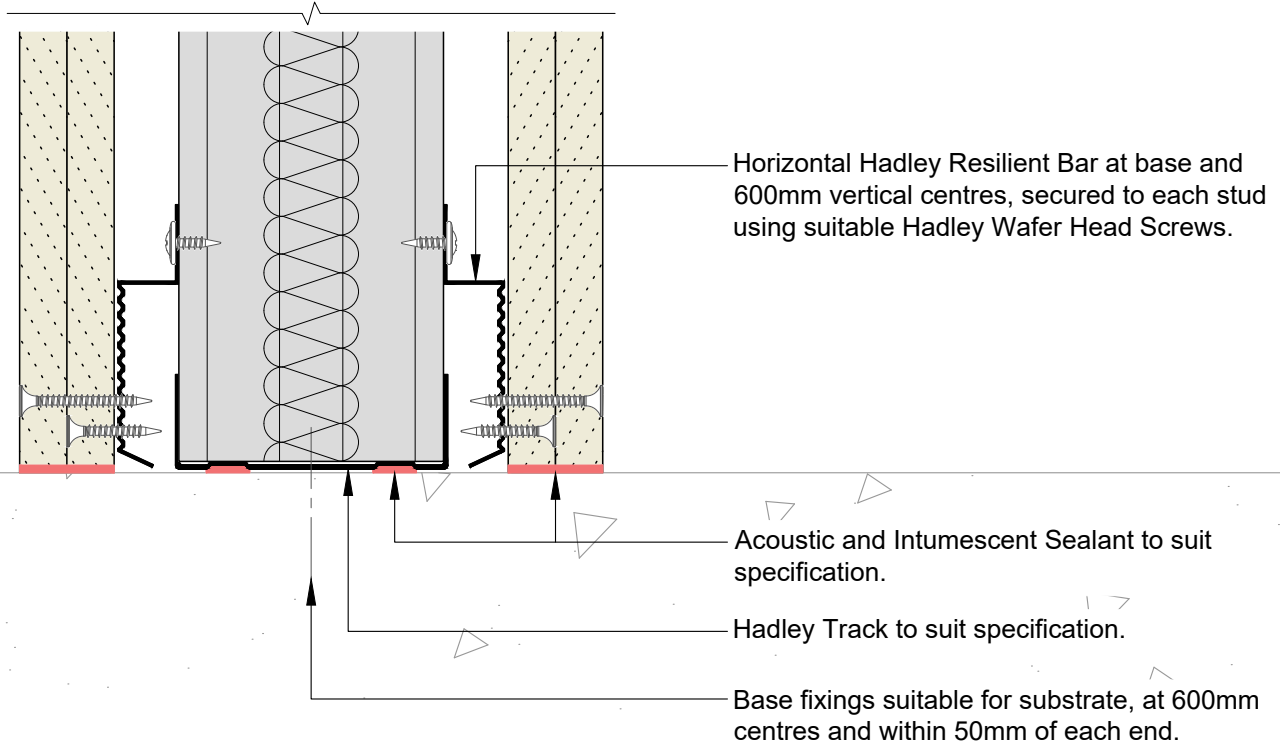
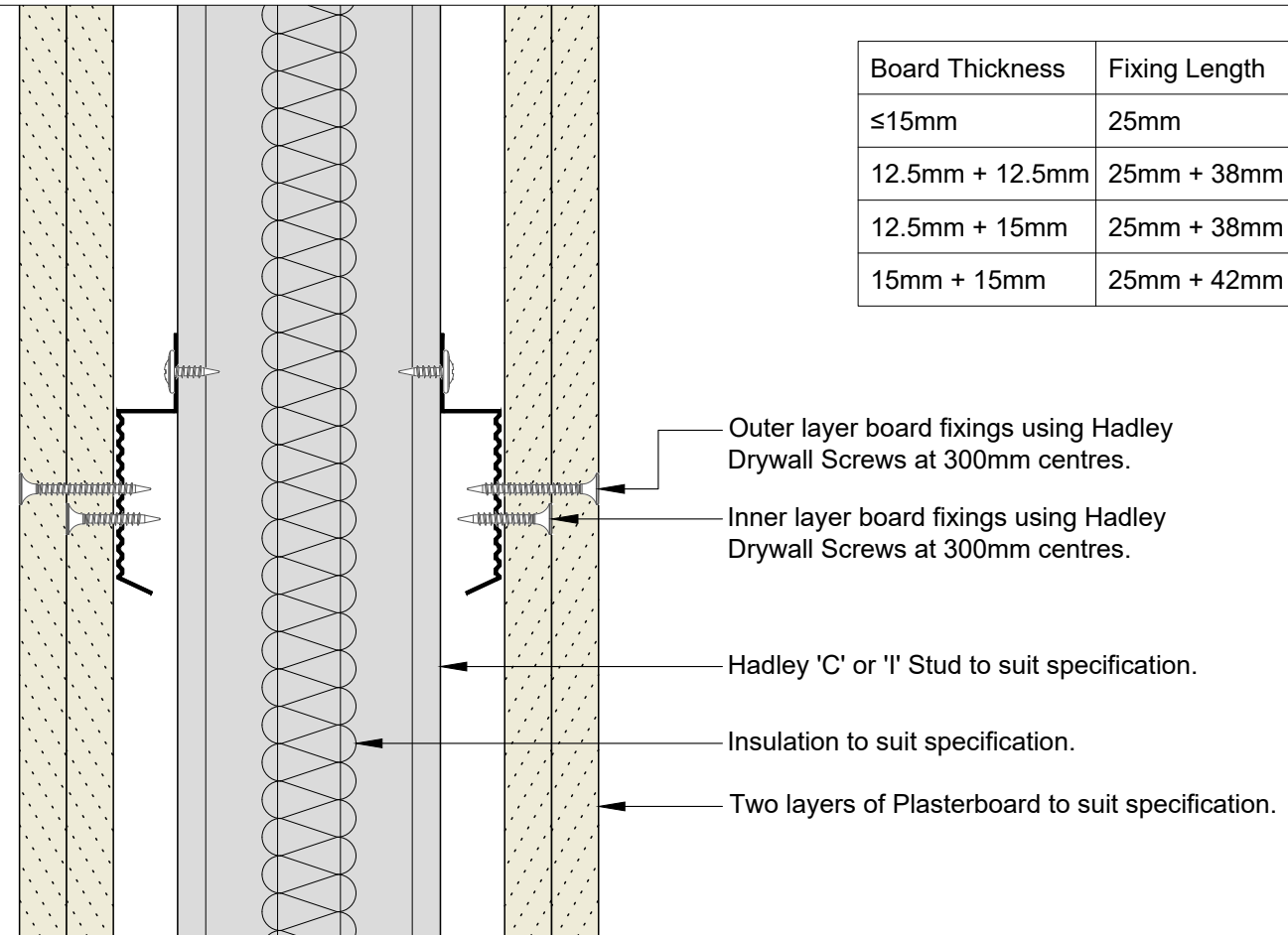


Hadley Group, Downing Street,  
Smethwick, West Midlands B66 2PA  
Tel: +44 (0) 121 555 1329  
E-mail: drylining.technical@hadleygroup.co.uk

Project: Typical System Detail See project specification for exact requirements						
Title: <b>Hadley Hush</b> Resilient Bar-Two Sided Plan						
Scale: 1:2 @ A4	Date: Jul 21	Drawn: FM	Checked: JS	Dwg No: <b>HD-HUSH-TWO SIDED-01</b>	Revision: <b>00</b>	

All performance data and system specifications are for systems constructed with materials & components as shown. The inclusion or substitution of any other manufacturers materials or components could invalidate test data and system performance. The information is provided in good faith and is based upon details received which are assumed to include all relevant facts. No duty of care is owed to the recipient or any other third party and Hadley Industries PLC cannot accept liability in respect of the details shown. None of the content may be distributed or copied directly without prior approval.  
© 2021 Hadley Industries Holdings Limited

Board Thickness	Fixing Length
≤15mm	25mm
12.5mm + 12.5mm	25mm + 38mm
12.5mm + 15mm	25mm + 38mm
15mm + 15mm	25mm + 42mm



00	JUL21	First Issue	FM	JS	JS	System details to be read in conjunction with Hadley Group project specification pack. All applications to be built in accordance with British Standards, Building Regulations and Hadley Group tested solutions.
Rev:	Date:	Reason for Issue:	Drn:	Chk:	App:	



Hadley Group, Downing Street,  
Smethwick, West Midlands B66 2PA  
Tel: +44 (0) 121 555 1329  
E-mail: drylining.technical@hadleygroup.co.uk

Project: Typical System Detail See project specification for exact requirements						
Title: <b>Hadley Hush</b> Resilient Bar-Two Sided Base						
Scale: 1:2 @ A4	Date: Jul 21	Drawn: FM	Checked: JS	Dwg No: <b>HD-HUSH-TWO SIDED-02</b>	Revision: <b>00</b>	

All performance data and system specifications are for systems constructed with materials & components as shown. The inclusion or substitution of any other manufacturers materials or components could invalidate test data and system performance. The information is provided in good faith and is based upon details received which are assumed to include all relevant facts. No duty of care is owed to the recipient or any other third party and Hadley Industries PLC cannot accept liability in respect of the details shown. None of the content may be distributed or copied directly without prior approval.

Board Thickness	Fixing Length
≤15mm	25mm
12.5mm + 12.5mm	25mm + 38mm
12.5mm + 15mm	25mm + 38mm
15mm + 15mm	25mm + 42mm

Soffit fixings suitable for substrate, at 600mm centres and within 50mm of each end.

Hadley Track to suit specification.

Acoustic and Intumescent Sealant to suit specification.

Horizontal Hadley Resilient Bar at head and 600mm vertical centres, secured to each stud using suitable Hadley Wafer Head Screws.

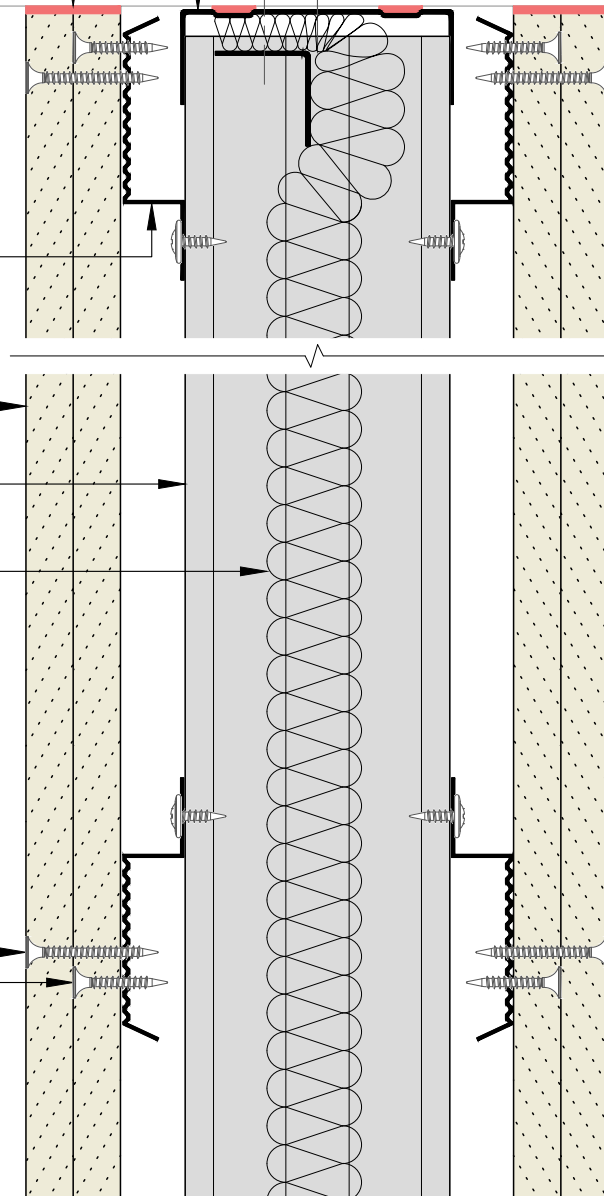
Two layers of Plasterboard to suit specification.

Hadley 'C' or 'I' Stud to suit specification.

Insulation to suit specification, hung from top of partition using Hadley 25x25mm Steel Angle, secured using suitable fixings, within 50mm of each end.

Outer layer board fixings using Hadley Drywall Screws at 300mm centres.

Inner layer board fixings using Hadley Drywall Screws at 300mm centres.



00 JUL21 First Issue FM JS JS System details to be read in conjunction with Hadley Group project specification pack. All applications to be built in accordance with British Standards, Building Regulations and Hadley Group tested solutions.



Hadley Group, Downing Street,  
Smethwick, West Midlands B66 2PA  
Tel: +44 (0) 121 555 1329  
E-mail: drylining.technical@hadleygroup.co.uk

Project:  
Typical System Detail  
See project specification for exact requirements

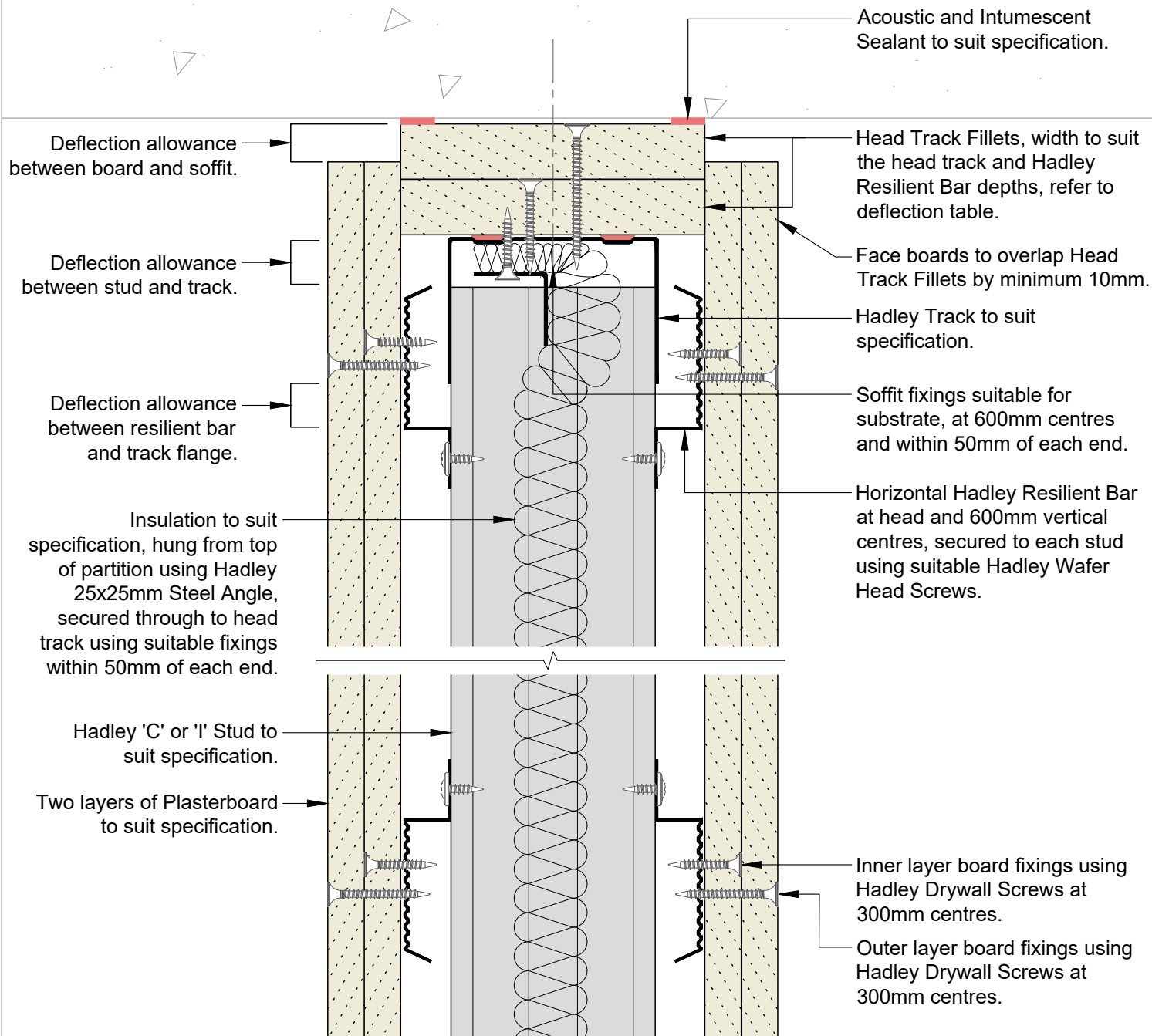
Title:  
**Hadley Hush**  
Resilient Bar-Two Sided  
Fixed Head

Scale: 1:2 @ A4	Date: Jul 21	Drawn: FM	Checked: JS	Dwg No: <b>HD-HUSH-TWO SIDED-03</b>	Revision: <b>00</b>
--------------------	-----------------	--------------	----------------	--	------------------------

All performance data and system specifications are for systems constructed with materials & components as shown. The inclusion or substitution of any other manufacturers materials or components could invalidate test data and system performance. The information is provided in good faith and is based upon details received which are assumed to include all relevant facts. No duty of care is owed to the recipient or any other third party and Hadley Industries PLC cannot accept liability in respect of the details shown. None of the content may be distributed or copied directly without prior approval.  
© 2021 Hadley Industries Holdings Limited

Min. Deflection to suit structural engineer design	Min. Head Track Fillet(s)	Hadley Track Flange
5mm	1x15mm Type F Plasterboard	50mm
9mm	1x19mm CoreBoard	50mm
15mm	2x12.5mm Type F Plasterboard	50mm
20mm	2x15mm Type F Plasterboard	50mm
28mm	2x19mm CoreBoard	50mm
35mm	3x15mm Type F Plasterboard	70mm

Board Thickness	Fixing Length
≤15mm	25mm
12.5mm + 12.5mm	25mm + 38mm
12.5mm + 15mm	25mm + 38mm
15mm + 15mm	25mm + 42mm



00 JUL21 First Issue FM JS JS System details to be read in conjunction with Hadley Group project specification pack. All applications to be built in accordance with British Standards, Building Regulations and Hadley Group tested solutions.

Rev: Date: Reason for Issue: Drn: Chk: App: Project:



Hadley Group, Downing Street,  
Smethwick, West Midlands B66 2PA

Tel: +44 (0) 121 555 1329

E-mail: drylining.technical@hadleygroup.co.uk

Typical System Detail  
See project specification for exact requirements

Title:  
**Hadley Hush**  
Resilient Bar-Two Sided  
Deflection Head up to 60 mins EI Fire Resistance

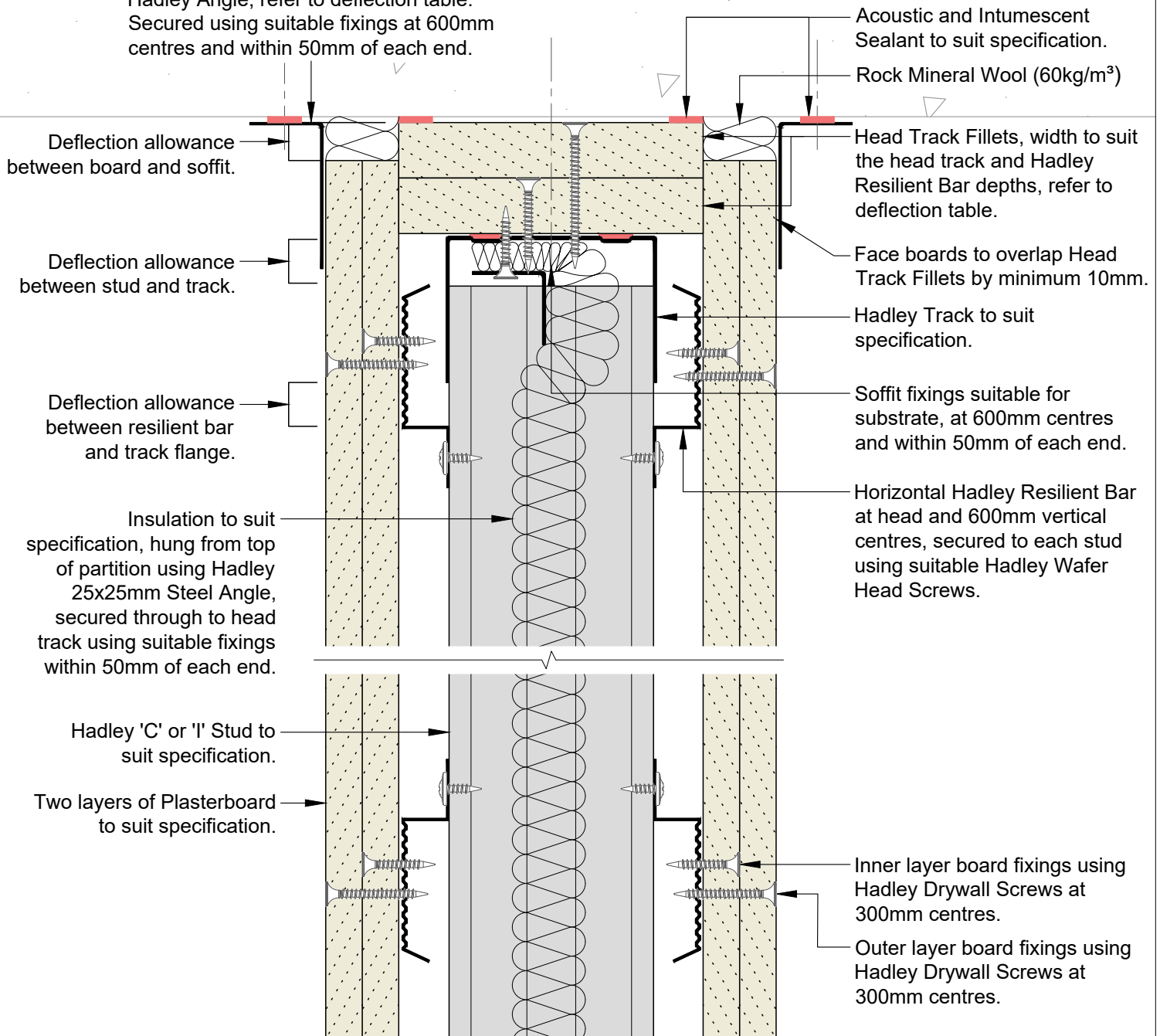
Scale:	Date:	Drawn:	Checked:	Dwg No:	Revision:
1:2 @ A4	Jul 21	FM	JS	<b>HD-HUSH-TWO SIDED-04</b>	<b>00</b>

All performance data and system specifications are for systems constructed with materials & components as shown. The inclusion or substitution of any other manufacturers materials or components could invalidate test data and system performance. The information is provided in good faith and is based upon details received which are assumed to include all relevant facts. No duty of care is owed to the recipient or any other third party and Hadley Industries PLC cannot accept liability in respect of the details shown. None of the content may be distributed or copied directly without prior approval.

Min. Deflection to suit structural engineer design	Min. Head Track Fillet(s)	Hadley Track Flange	Min. Hadley Angle
5mm	1x15mm Type F Plasterboard	50mm	19x19mm
9mm	1x19mm CoreBoard	50mm	19x19mm
15mm	2x12.5mm Type F Plasterboard	50mm	25x25mm
20mm	2x15mm Type F Plasterboard	50mm	25x50mm
28mm	2x19mm CoreBoard	50mm	25x50mm
35mm	3x15mm Type F Plasterboard	70mm	25x50mm

Board Thickness	Fixing Length
≤15mm	25mm
12.5mm + 12.5mm	25mm + 38mm
12.5mm + 15mm	25mm + 38mm
15mm + 15mm	25mm + 42mm

Hadley Angle, refer to deflection table.  
Secured using suitable fixings at 600mm centres and within 50mm of each end.



00 JUL21 First Issue FM JS JS System details to be read in conjunction with Hadley Group project specification pack. All applications to be built in accordance with British Standards, Building Regulations and Hadley Group tested solutions.

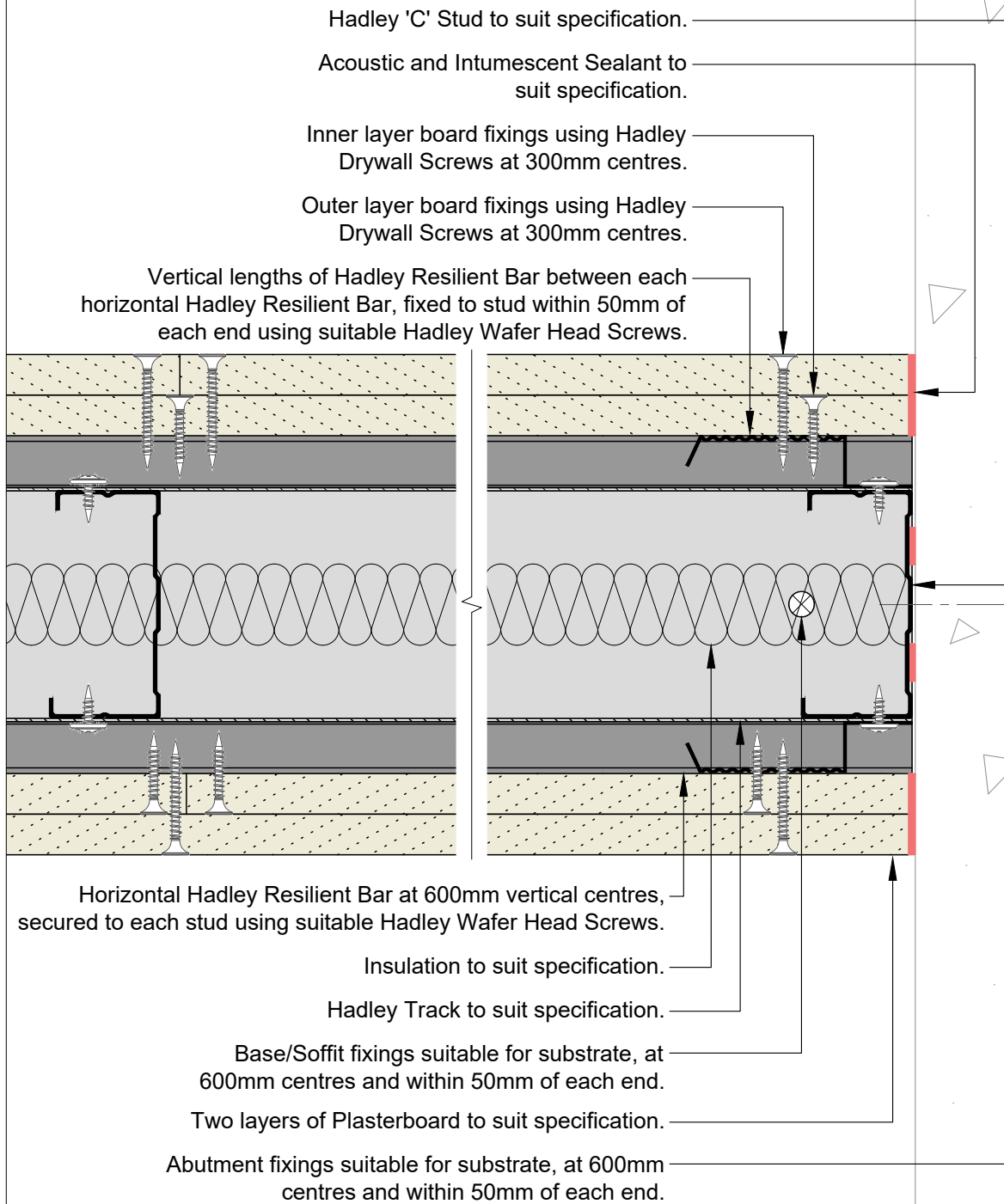


Hadley Group, Downing Street,  
Smethwick, West Midlands B66 2PA  
Tel: +44 (0) 121 555 1329  
E-mail: drylining.technical@hadleygroup.co.uk

Project:  
**Typical System Detail**  
 See project specification for exact requirements  
 Title:  
**Hadley Hush**  
 Resilient Bar-Two Sided  
 Deflection Head up to 120 mins EI Fire Resistance  
 Scale: 1:2 @ A4 Date: Jul 21 Drawn: FM Checked: JS Dwg No: **HD-HUSH-TWO SIDED-05** Revision: **00**

All performance data and system specifications are for systems constructed with materials & components as shown. The inclusion or substitution of any other manufacturers materials or components could invalidate test data and system performance. The information is provided in good faith and is based upon details received which are assumed to include all relevant facts. No duty of care is owed to the recipient or any other third party and Hadley Industries PLC cannot accept liability in respect of the details shown. None of the content may be distributed or copied directly without prior approval.  
 © 2021 Hadley Industries Holdings Limited

Board Thickness	Fixing Length
≤15mm	25mm
12.5mm + 12.5mm	25mm + 38mm
12.5mm + 15mm	25mm + 38mm
15mm + 15mm	25mm + 42mm



00	JUL21	First Issue	FM	JS	JS	System details to be read in conjunction with Hadley Group project specification pack. All applications to be built in accordance with British Standards, Building Regulations and Hadley Group tested solutions.
Rev:	Date:	Reason for Issue:	Drn:	Chk:	App:	



Hadley Group, Downing Street,  
Smethwick, West Midlands B66 2PA  
Tel: +44 (0) 121 555 1329  
E-mail: drylining.technical@hadleygroup.co.uk

Project: Typical System Detail See project specification for exact requirements						
Title: <b>Hadley Hush</b> Resilient Bar-Two Sided Abutment to Concrete/Blockwork						
Scale:	Date:	Drawn:	Checked:	Dwg No:	Revision:	
1:2 @ A4	Jul 21	FM	JS	<b>HD-HUSH-TWO SIDED-06</b>	<b>00</b>	

All performance data and system specifications are for systems constructed with materials & components as shown. The inclusion or substitution of any other manufacturers materials or components could invalidate test data and system performance. The information is provided in good faith and is based upon details received which are assumed to include all relevant facts. No duty of care is owed to the recipient or any other third party and Hadley Industries PLC cannot accept liability in respect of the details shown. None of the content may be distributed or copied directly without prior approval.  
© 2021 Hadley Industries Holdings Limited

Where systems have unequal performance, seal the gap between boards using acoustic and intumescent mastic, subject to confirmation from project acoustic and fire consultants.

Rock Mineral Wool (60kg/m<sup>3</sup>) installed to deflection void above boards, sealed with acoustic and intumescent sealant.

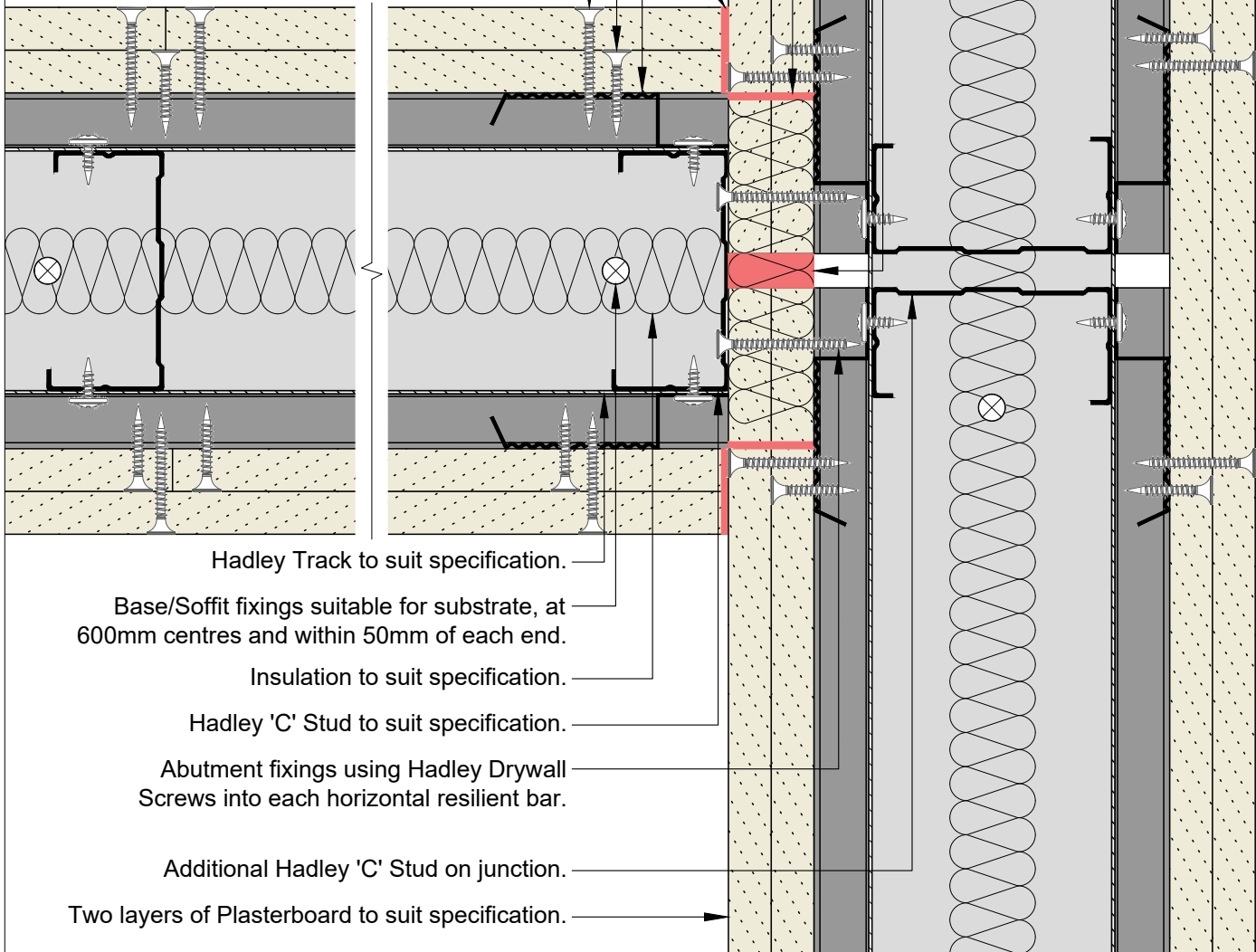
Acoustic and Intumescent Sealant to suit specification.

Vertical lengths of Hadley Resilient Bar between each horizontal Hadley Resilient Bar, fixed to stud within 50mm of each end using suitable Hadley Wafer Head Screws.

Inner layer board fixings using Hadley Drywall Screws at 300mm centres.

Outer layer board fixings using Hadley Drywall Screws at 300mm centres.

Board Thickness	Fixing Length
≤15mm	25mm
12.5mm + 12.5mm	25mm + 38mm
12.5mm + 15mm	25mm + 38mm
15mm + 15mm	25mm + 42mm



Hadley Track to suit specification.

Base/Soffit fixings suitable for substrate, at 600mm centres and within 50mm of each end.

Insulation to suit specification.

Hadley 'C' Stud to suit specification.

Abutment fixings using Hadley Drywall Screws into each horizontal resilient bar.

Additional Hadley 'C' Stud on junction.

Two layers of Plasterboard to suit specification.

00	JUL21	First Issue	FM	JS	JS	System details to be read in conjunction with Hadley Group project specification pack. All applications to be built in accordance with British Standards, Building Regulations and Hadley Group tested solutions.
Rev:	Date:	Reason for Issue:	Drn:	Chk:	App:	



Hadley Group, Downing Street,  
Smethwick, West Midlands B66 2PA

Tel: +44 (0) 121 555 1329

E-mail: drylining.technical@hadleygroup.co.uk

Project: Typical System Detail

See project specification for exact requirements

Title:  
**Hadley Hush**  
Resilient Bar-Two Sided  
Abutment to Drylining Partition - Flanking detail

Scale:	Date:	Drawn:	Checked:	Dwg No:	Revision:
1:2 @ A4	Jul 21	FM	JS	<b>HD-HUSH-TWO SIDED-07</b>	<b>00</b>

All performance data and system specifications are for systems constructed with materials & components as shown. The inclusion or substitution of any other manufacturers materials or components could invalidate test data and system performance. The information is provided in good faith and is based upon details received which are assumed to include all relevant facts. No duty of care is owed to the recipient or any other third party and Hadley Industries PLC cannot accept liability in respect of the details shown. None of the content may be distributed or copied directly without prior approval.



Horizontal Hadley Resilient Bar at 600mm vertical centres, secured to each stud using suitable Hadley Wafer Head Screws.

Splay Track and head fillets, ensuring gaps are sealed.

Two layers of Plasterboard to suit specification.

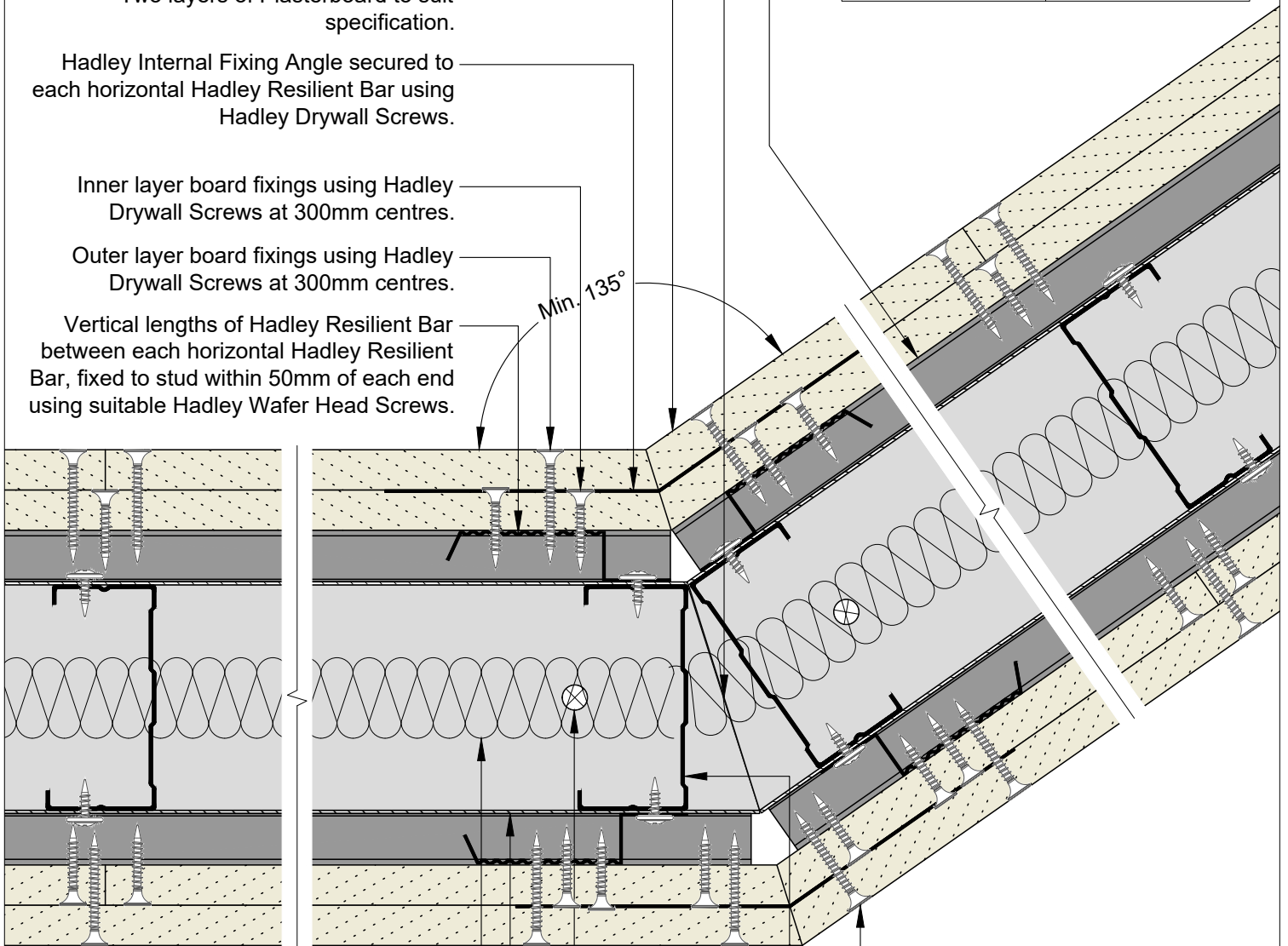
Hadley Internal Fixing Angle secured to each horizontal Hadley Resilient Bar using Hadley Drywall Screws.

Inner layer board fixings using Hadley Drywall Screws at 300mm centres.

Outer layer board fixings using Hadley Drywall Screws at 300mm centres.

Vertical lengths of Hadley Resilient Bar between each horizontal Hadley Resilient Bar, fixed to stud within 50mm of each end using suitable Hadley Wafer Head Screws.

Board Thickness	Fixing Length
≤15mm	25mm
12.5mm + 12.5mm	25mm + 38mm
12.5mm + 15mm	25mm + 38mm
15mm + 15mm	25mm + 42mm



Insulation to suit specification.

Hadley Track to suit specification.

Base/Soffit fixings suitable for substrate, at 600mm centres and within 50mm of each end.

Hadley 'C' Stud to suit specification.

External corner board fixings using Hadley Drywall Screws at 200mm centres.

00	JUL21	First Issue	FM	JS	JS	System details to be read in conjunction with Hadley Group project specification pack. All applications to be built in accordance with British Standards, Building Regulations and Hadley Group tested solutions.
Rev:	Date:	Reason for Issue:	Drn:	Chk:	App:	



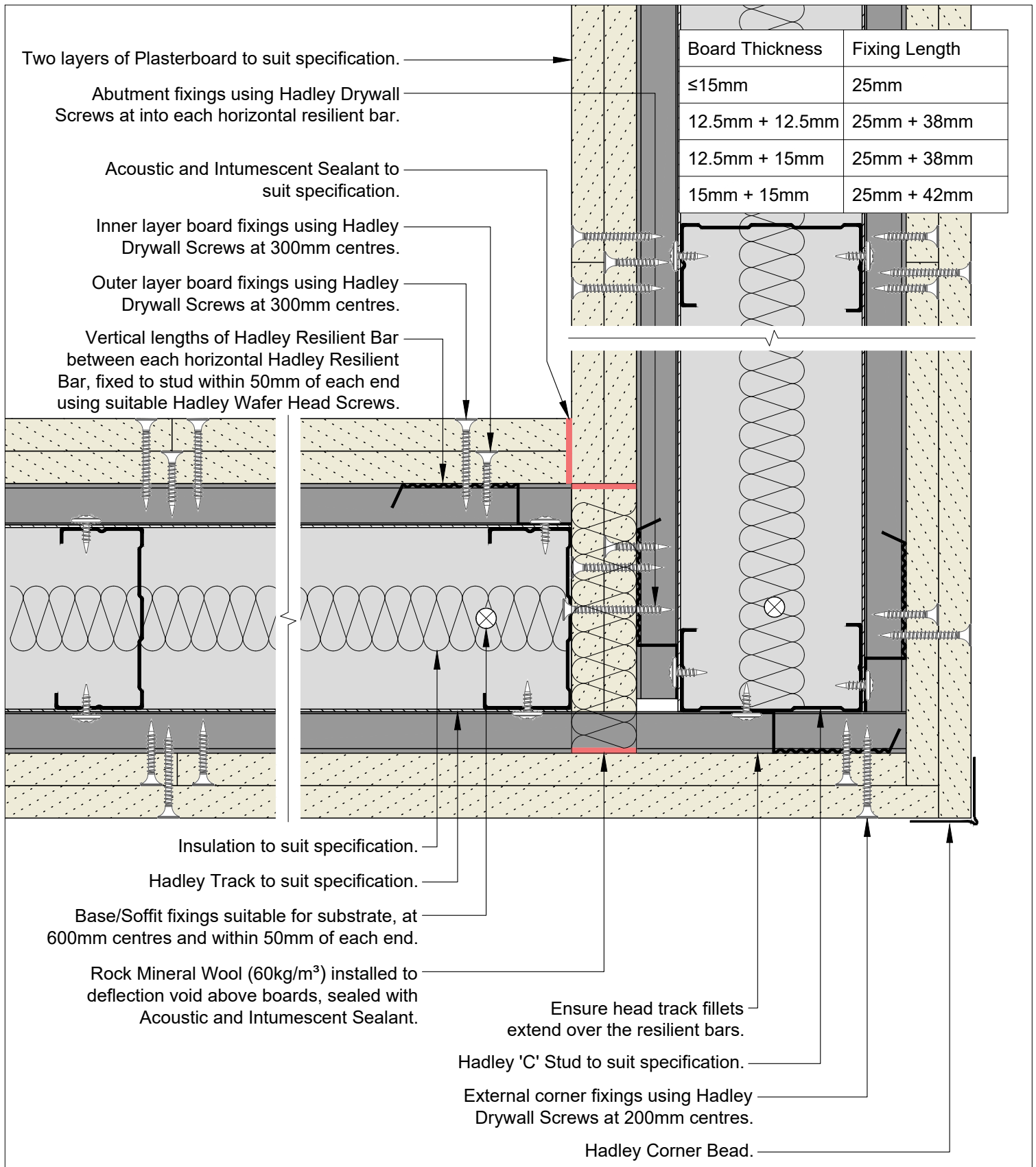
Hadley Group, Downing Street,  
Smethwick, West Midlands B66 2PA  
Tel: +44 (0) 121 555 1329  
E-mail: drylining.technical@hadleygroup.co.uk

Project:  
Typical System Detail  
See project specification for exact requirements

Title:  
**Hadley Hush**  
Resilient Bar-Two Sided  
Splayed Corner

Scale:	Date:	Drawn:	Checked:	Dwg No:	Revision:
1:2 @ A4	Jul 21	FM	JS	<b>HD-HUSH-TWO SIDED-08</b>	<b>00</b>

All performance data and system specifications are for systems constructed with materials & components as shown. The inclusion or substitution of any other manufacturers materials or components could invalidate test data and system performance. The information is provided in good faith and is based upon details received which are assumed to include all relevant facts. No duty of care is owed to the recipient or any other third party and Hadley Industries PLC cannot accept liability in respect of the details shown. None of the content may be distributed or copied directly without prior approval.



00	JUL21	First Issue	FM	JS	JS	System details to be read in conjunction with Hadley Group project specification pack. All applications to be built in accordance with British Standards, Building Regulations and Hadley Group tested solutions.
Rev:	Date:	Reason for Issue:	Drn:	Chk:	App:	



Hadley Group, Downing Street,  
Smethwick, West Midlands B66 2PA  
Tel: +44 (0) 121 555 1329  
E-mail: drylining.technical@hadleygroup.co.uk

Project: Typical System Detail See project specification for exact requirements						
Title: <b>Hadley Hush</b> Resilient Bar-Two Sided 90° Corner						
Scale:	Date:	Drawn:	Checked:	Dwg No:	Revision:	
1:2 @ A4	Jul 21	FM	JS	<b>HD-HUSH-TWO SIDED-10</b>	<b>00</b>	

All performance data and system specifications are for systems constructed with materials & components as shown. The inclusion or substitution of any other manufacturers materials or components could invalidate test data and system performance. The information is provided in good faith and is based upon details received which are assumed to include all relevant factors. No duty of care is owed to the recipient or any other third party and Hadley Industries PLC cannot accept liability in respect of the details shown. None of the content may be distributed or copied directly without prior approval.  
© 2021 Hadley Industries Holdings Limited

Stud and track depths and gauge to suit specification.  
Fixing type to suit metalwork gauge.

Avoid outer board joint located on the door jamb.

Horizontal Hadley Resilient Bar at 600mm vertical centres,  
secured to each stud using suitable Hadley Wafer Head Screws.

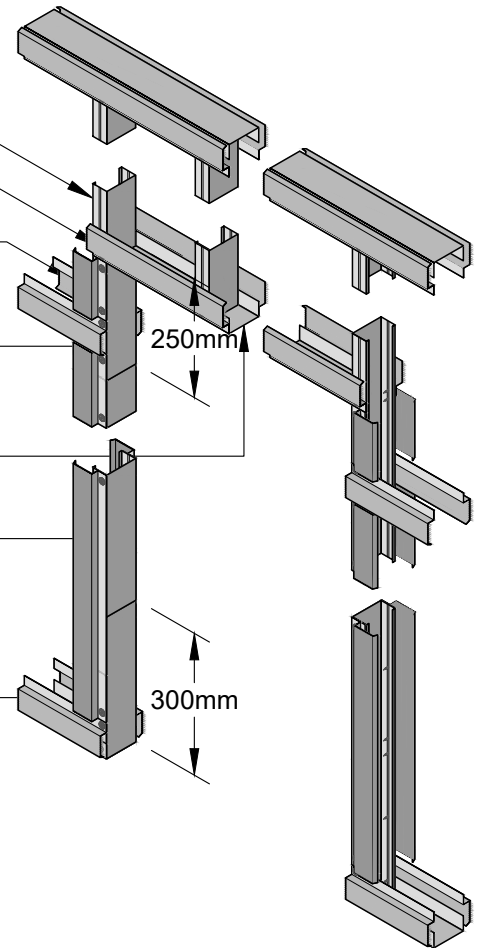
Vertical lengths of Hadley Resilient Bar between each  
horizontal Hadley Resilient Bar, fixed to stud within 50mm of  
each end using suitable Hadley Wafer Head Screws.

Hadley Track cut and bent to extend 250mm down stud, fixed  
through both flanges using 2N<sup>o</sup> Hadley Wafer Head Drywall  
Screws each side.

Hadley Track to suit specification.  
Lintel detail to suit opening width.

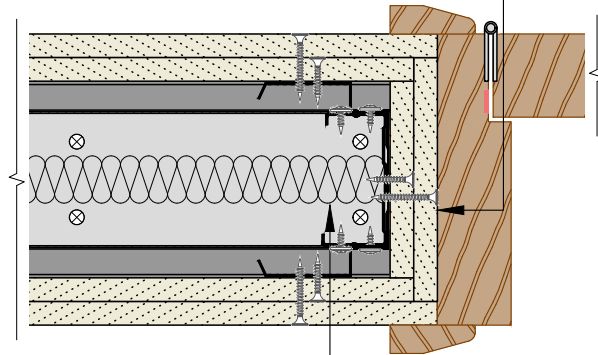
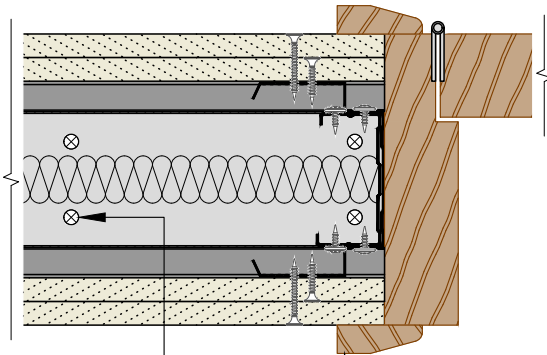
Hadley Track sleeved over stud between returned channels at  
opening head & base, fixed through both flanges using Hadley  
Wafer Head Drywall Screws at 300mm centres and within 50mm  
of each end for each side.

Hadley Track cut and bent to extend vertically 300mm, fixed  
through both flanges using 3N<sup>o</sup> Hadley Wafer Head Drywall  
Screws each side.



**Plan View**

For fire rated openings, apply plasterboard  
as per face board specification to the reveals.



Indicative door frame and  
architraves by others.

Base track fixed with pairs of  
suitable fixings 150mm apart.

Timber fillets, omitted for  
clarity, within door jamb to suit  
door manufacturers  
application requirements and  
tested solution.

00	JUL21	First Issue	FM	JS	JS	System details to be read in conjunction with Hadley Group project specification pack. All applications to be built in accordance with British Standards, Building Regulations and Hadley Group tested solutions.
Rev:	Date:	Reason for Issue:	Drn:	Chk:	App:	



Hadley Group, Downing Street,  
Smethwick, West Midlands B66 2PA

Tel: +44 (0) 121 555 1329

E-mail: drylining.technical@hadleygroup.co.uk

Project: Typical System Detail  
See project specification for exact requirements

Title: **Hadley Hush**  
Resilient Bar-Two Sided  
Doorway 0-60 kg

Scale:	Date:	Drawn:	Checked:	Dwg No:	Revision:
NTS	Jul 21	FM	JS	<b>HD-HUSH-TWO SIDED-12</b>	<b>00</b>

All performance data and system specifications are for systems constructed with materials & components as shown. The inclusion or substitution of any other manufacturers materials or components could invalidate test data and system performance. The information is provided in good faith and is based upon details received which are assumed to include all relevant facts. No duty of care is owed to the recipient or any other third party and Hadley Industries PLC cannot accept liability in respect of the details shown. None of the content may be distributed or copied directly without prior approval.

Stud and track depths and gauge to suit specification.  
Fixing type to suit metalwork gauge.

Additional Hadley Stud located up to 150mm from jamb stud.

Avoid outer board joint located on the door jamb.

Horizontal Hadley Resilient Bar at 600mm vertical centres, secured to each stud using suitable Hadley Wafer Head Screws.

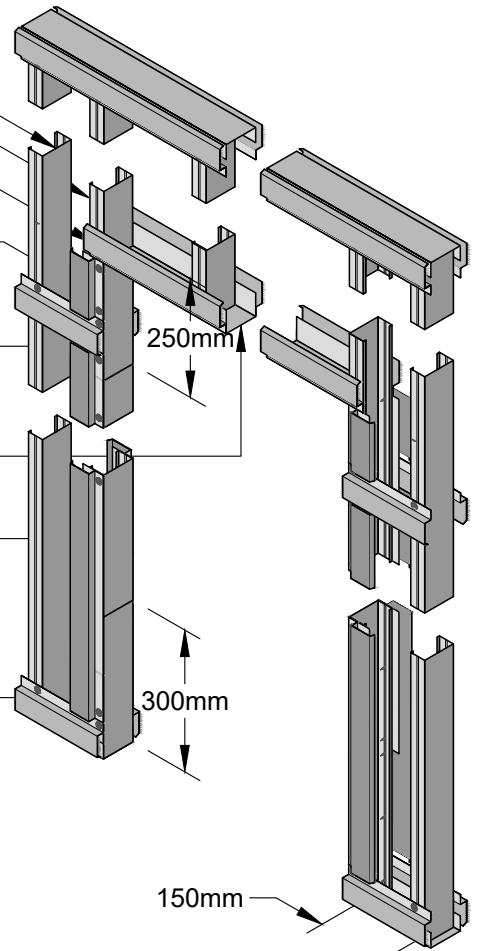
Vertical lengths of Hadley Resilient Bar between each horizontal Hadley Resilient Bar, fixed to stud within 50mm of each end using suitable Hadley Wafer Head Screws.

Hadley Track cut and bent to extend 250mm down stud, fixed through both flanges using 2Nø Hadley Wafer Head Drywall Screws each side.

Hadley Track to suit specification.  
Lintel detail to suit opening width.

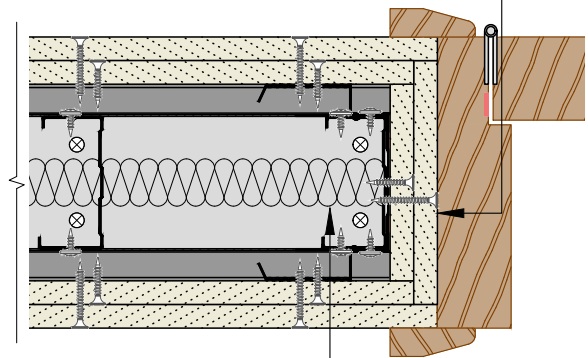
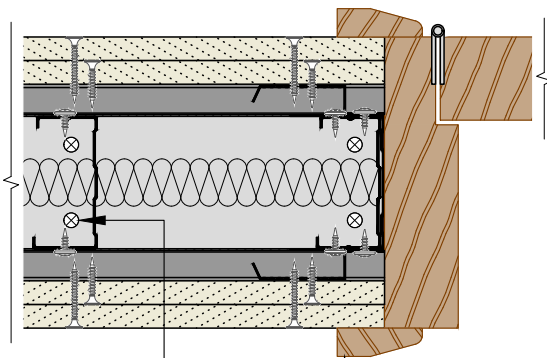
Hadley Track sleeved over stud between returned channels at opening head & base, fixed through both flanges using Hadley Wafer Head Drywall Screws at 300mm centres and within 50mm of each end for each side.

Hadley Track cut and bent to extend vertically 300mm, fixed through both flanges using 3Nø Hadley Wafer Head Drywall Screws each side.



**Plan View**

For fire rated openings, apply plasterboard as per face board specification to the reveals.



Indicative door frame and architraves by others.

Base track fixed with pairs of suitable fixings 150mm apart.

Timber fillets, omitted for clarity, within door jamb to suit door manufacturers application requirements and tested solution.

00	JUL21	First Issue	FM	JS	JS	System details to be read in conjunction with Hadley Group project specification pack. All applications to be built in accordance with British Standards, Building Regulations and Hadley Group tested solutions.
Rev:	Date:	Reason for Issue:	Drn:	Chk:	App:	



Hadley Group, Downing Street,  
Smethwick, West Midlands B66 2PA  
Tel: +44 (0) 121 555 1329  
E-mail: drylining.technical@hadleygroup.co.uk

Project: Typical System Detail See project specification for exact requirements						
Title: <b>Hadley Hush</b> Resilient Bar-Two Sided Doorway 61-100 kg						
Scale: NTS	Date: Jul 21	Drawn: FM	Checked: JS	Dwg No: <b>HD-HUSH-TWO SIDED-13</b>	Revision: <b>00</b>	

All performance data and system specifications are for systems constructed with materials & components as shown. The inclusion or substitution of any other manufacturers materials or components could invalidate test data and system performance. The information is provided in good faith and is based upon details received which are assumed to include all relevant facts. No duty of care is owed to the recipient or any other third party and Hadley Industries PLC cannot accept liability in respect of the details shown. None of the content may be distributed or copied directly without prior approval.



**HADLEY TECHNICAL SUPPORT**

☎ +44 (0) 121 555 1329

✉ [drylining.technical@hadleygroup.com](mailto:drylining.technical@hadleygroup.com)