



Hadley Drylining Standard Details

HadleyHUSH – Resilient Bar – One Sided
2022 Version 1

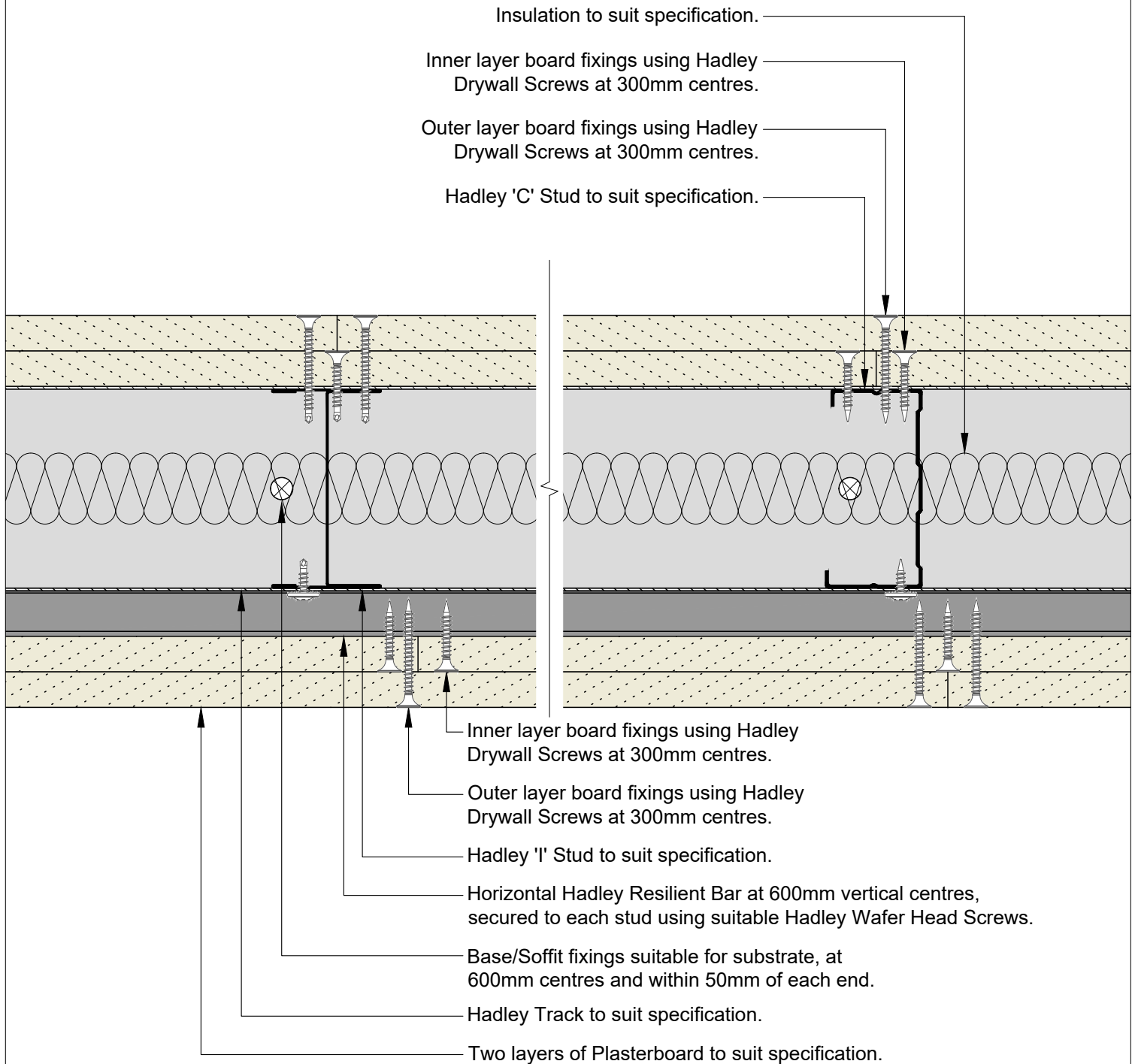
HADLEY DRYLINING SALES

☎ +44 (0) 121 555 1300
✉ dryliningsales@hadleygroup.com

HADLEY TECHNICAL SUPPORT

☎ +44 (0) 121 555 1329
✉ drylining.technical@hadleygroup.com

Board Thickness	Fixing Length
≤15mm	25mm
12.5mm + 12.5mm	25mm + 38mm
12.5mm + 15mm	25mm + 38mm
15mm + 15mm	25mm + 42mm



00	JUL21	First Issue	FM	JS	JS	System details to be read in conjunction with Hadley Group project specification pack. All applications to be built in accordance with British Standards, Building Regulations and Hadley Group tested solutions.
Rev:	Date:	Reason for Issue:	Drn:	Chk:	App:	



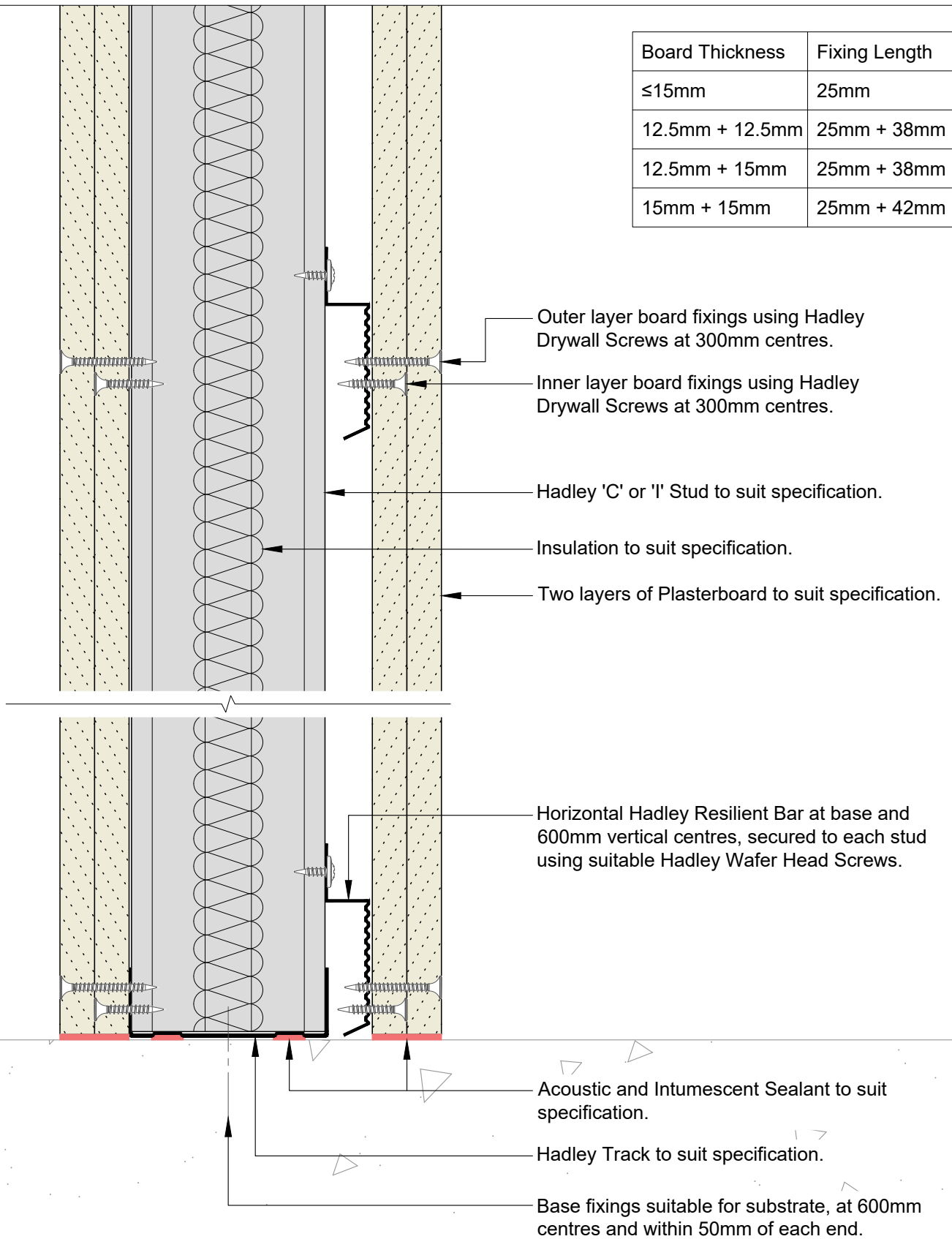
Hadley Group, Downing Street,
Smethwick, West Midlands B66 2PA
Tel: +44 (0) 121 555 1329
E-mail: drylining.technical@hadleygroup.co.uk

Project: Typical System Detail See project specification for exact requirements						
Title: Hadley Hush Resilient Bar-One Sided Plan						
Scale: 1:2 @ A4	Date: Jul 21	Drawn: FM	Checked: JS	Dwg No: HD-HUSH-ONE SIDED-01	Revision: 00	

All performance data and system specifications are for systems constructed with materials & components as shown. The inclusion or substitution of any other manufacturers materials or components could invalidate test data and system performance. The information is provided in good faith and is based upon details received which are assumed to include all relevant facts. No duty of care is owed to the recipient or any other third party and Hadley Industries PLC cannot accept liability in respect of the details shown. None of the content may be distributed or copied directly without prior approval.

© 2021 Hadley Industries Holdings Limited

Board Thickness	Fixing Length
≤15mm	25mm
12.5mm + 12.5mm	25mm + 38mm
12.5mm + 15mm	25mm + 38mm
15mm + 15mm	25mm + 42mm



00	JUL21	First Issue	FM	JS	JS	System details to be read in conjunction with Hadley Group project specification pack. All applications to be built in accordance with British Standards, Building Regulations and Hadley Group tested solutions.
Rev:	Date:	Reason for Issue:	Drn:	Chk:	App:	



Hadley Group, Downing Street,
Smethwick, West Midlands B66 2PA

Tel: +44 (0) 121 555 1329

E-mail: drylining.technical@hadleygroup.co.uk

Project: Typical System Detail

See project specification for exact requirements

Title:
Hadley Hush
Resilient Bar-One Sided
Base

Scale:	Date:	Drawn:	Checked:	Dwg No:	Revision:
1:2 @ A4	Jul 21	FM	JS	HD-HUSH-ONE SIDED-02	00

All performance data and system specifications are for systems constructed with materials & components as shown. The inclusion or substitution of any other manufacturers materials or components could invalidate test data and system performance. The information is provided in good faith and is based upon details received which are assumed to include all relevant facts. No duty of care is owed to the recipient or any other third party and Hadley Industries PLC cannot accept liability in respect of the details shown. None of the content may be distributed or copied directly without prior approval.

Board Thickness	Fixing Length
≤15mm	25mm
12.5mm + 12.5mm	25mm + 38mm
12.5mm + 15mm	25mm + 38mm
15mm + 15mm	25mm + 42mm

Soffit fixings suitable for substrate, at 600mm centres and within 50mm of each end.

Hadley Track to suit specification.

Acoustic and Intumescent Sealant to suit specification.

Horizontal Hadley Resilient Bar at head and 600mm vertical centres, secured to each stud using suitable Hadley Wafer Head Screws.

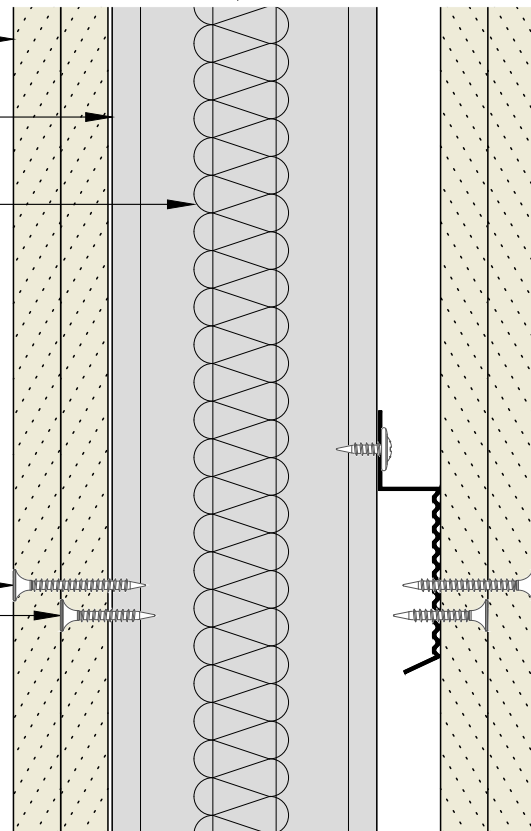
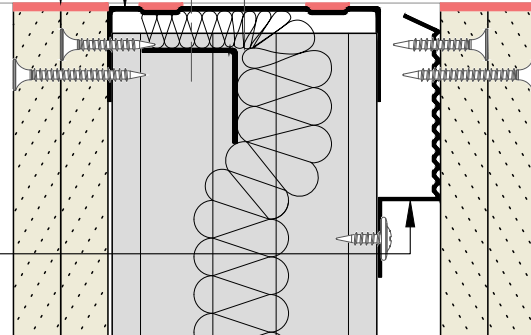
Two layers of Plasterboard to suit specification.

Hadley 'C' or 'I' Stud to suit specification.

Insulation to suit specification, hung from top of partition using Hadley 25x25mm Steel Angle, secured using suitable fixings, within 50mm of each end.

Outer layer board fixings using Hadley Drywall Screws at 300mm centres.

Inner layer board fixings using Hadley Drywall Screws at 300mm centres.



00 JUL21 First Issue FM JS JS System details to be read in conjunction with Hadley Group project specification pack. All applications to be built in accordance with British Standards, Building Regulations and Hadley Group tested solutions.

Rev: Date: Reason for Issue: Drn: Chk: App:



Hadley Group, Downing Street,
Smethwick, West Midlands B66 2PA
Tel: +44 (0) 121 555 1329
E-mail: drylining.technical@hadleygroup.co.uk

Project:
Typical System Detail
See project specification for exact requirements

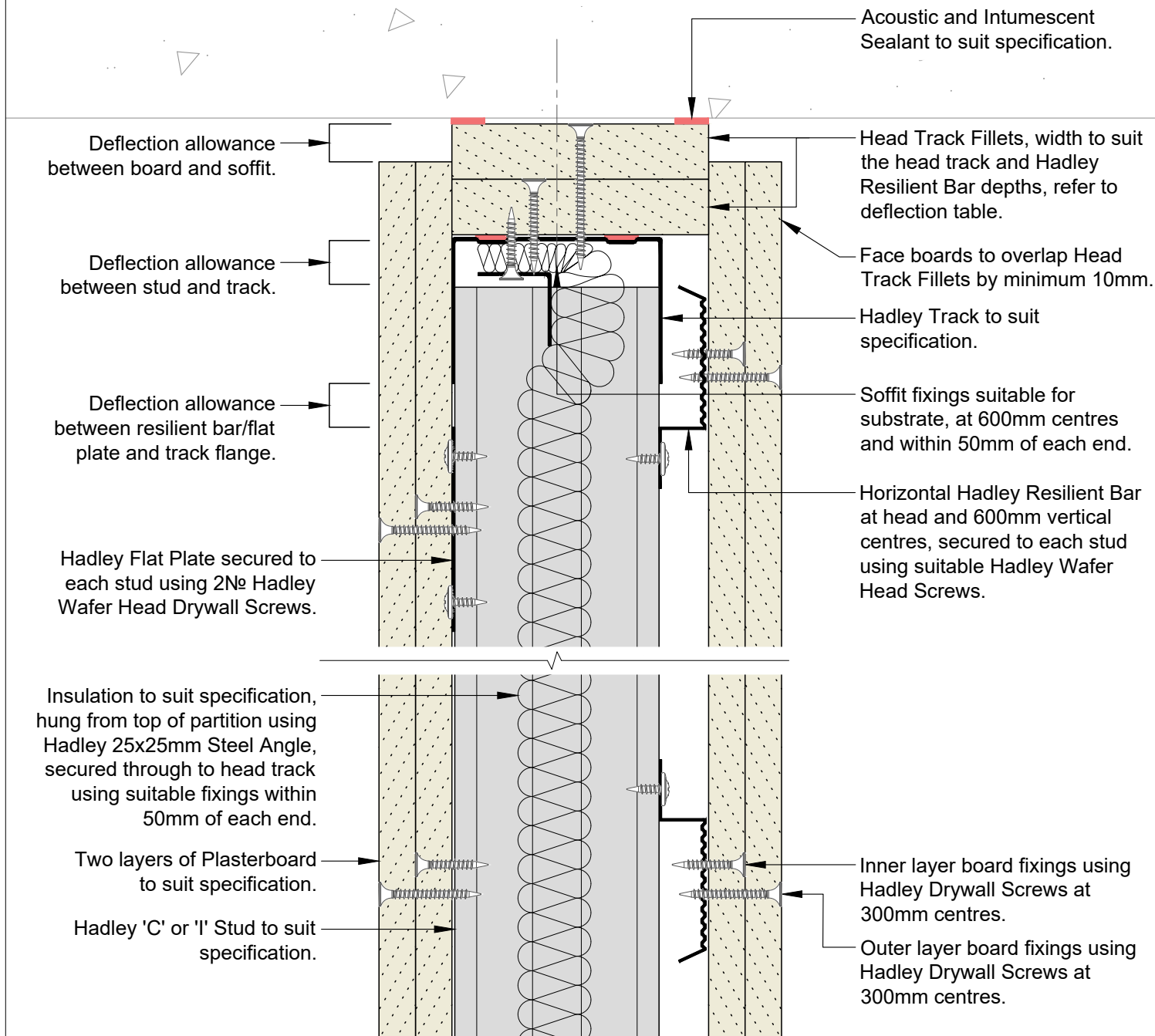
Title:
Hadley Hush
Resilient Bar-One Sided
Fixed Head

Scale: 1:2 @ A4	Date: Jul 21	Drawn: FM	Checked: JS	Dwg No: HD-HUSH-ONE SIDED-03	Revision: 00
--------------------	-----------------	--------------	----------------	--	------------------------

All performance data and system specifications are for systems constructed with materials & components as shown. The inclusion or substitution of any other manufacturers materials or components could invalidate test data and system performance. The information is provided in good faith and is based upon details received which are assumed to include all relevant facts. No duty of care is owed to the recipient or any other third party and Hadley Industries PLC cannot accept liability in respect of the details shown. None of the content may be distributed or copied directly without prior approval.

Min. Deflection to suit structural engineer design	Min. Head Track Fillet(s)	Hadley Track Flange
5mm	1x15mm Type F Plasterboard	50mm
9mm	1x19mm CoreBoard	50mm
15mm	2x12.5mm Type F Plasterboard	50mm
20mm	2x15mm Type F Plasterboard	50mm
28mm	2x19mm CoreBoard	50mm
35mm	3x15mm Type F Plasterboard	70mm

Board Thickness	Fixing Length
≤15mm	25mm
12.5mm + 12.5mm	25mm + 38mm
12.5mm + 15mm	25mm + 38mm
15mm + 15mm	25mm + 42mm



00 JUL21 First Issue FM JS JS System details to be read in conjunction with Hadley Group project specification pack. All applications to be built in accordance with British Standards, Building Regulations and Hadley Group tested solutions.



Hadley Group, Downing Street,
Smethwick, West Midlands B66 2PA

Tel: +44 (0) 121 555 1329

E-mail: drylining.technical@hadleygroup.co.uk

Project: Typical System Detail

See project specification for exact requirements

Title:
Hadley Hush
Resilient Bar-One Sided
Deflection Head up to 60 mins EI Fire Resistance

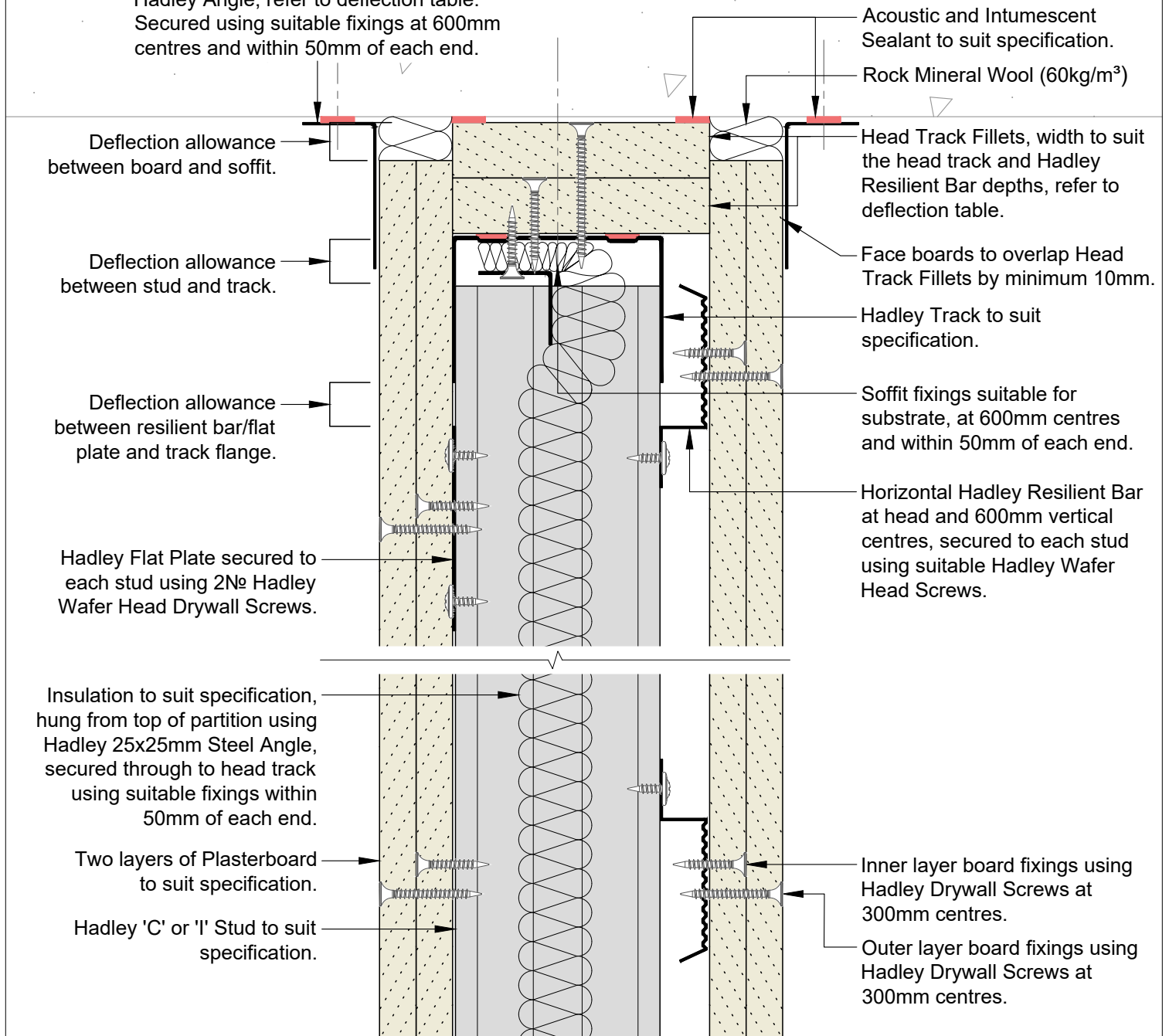
Scale:	Date:	Drawn:	Checked:	Dwg No:	Revision:
1:2 @ A4	Jul 21	FM	JS	HD-HUSH-ONE SIDED-04	00

All performance data and system specifications are for systems constructed with materials & components as shown. The inclusion or substitution of any other manufacturers materials or components could invalidate test data and system performance. The information is provided in good faith and is based upon details received which are assumed to include all relevant facts. No duty of care is owed to the recipient or any other third party and Hadley Industries PLC cannot accept liability in respect of the details shown. None of the content may be distributed or copied directly without prior approval.

Min. Deflection to suit structural engineer design	Min. Head Track Fillet(s)	Hadley Track Flange	Min. Hadley Angle
5mm	1x15mm Type F Plasterboard	50mm	19x19mm
9mm	1x19mm CoreBoard	50mm	19x19mm
15mm	2x12.5mm Type F Plasterboard	50mm	25x25mm
20mm	2x15mm Type F Plasterboard	50mm	25x50mm
28mm	2x19mm CoreBoard	50mm	25x50mm
35mm	3x15mm Type F Plasterboard	70mm	25x50mm

Board Thickness	Fixing Length
≤15mm	25mm
12.5mm + 12.5mm	25mm + 38mm
12.5mm + 15mm	25mm + 38mm
15mm + 15mm	25mm + 42mm

Hadley Angle, refer to deflection table.
Secured using suitable fixings at 600mm centres and within 50mm of each end.



00 JUL21 First Issue FM JS JS System details to be read in conjunction with Hadley Group project specification pack. All applications to be built in accordance with British Standards, Building Regulations and Hadley Group tested solutions.
Rev: Date: Reason for Issue: Drn: Chk: App:

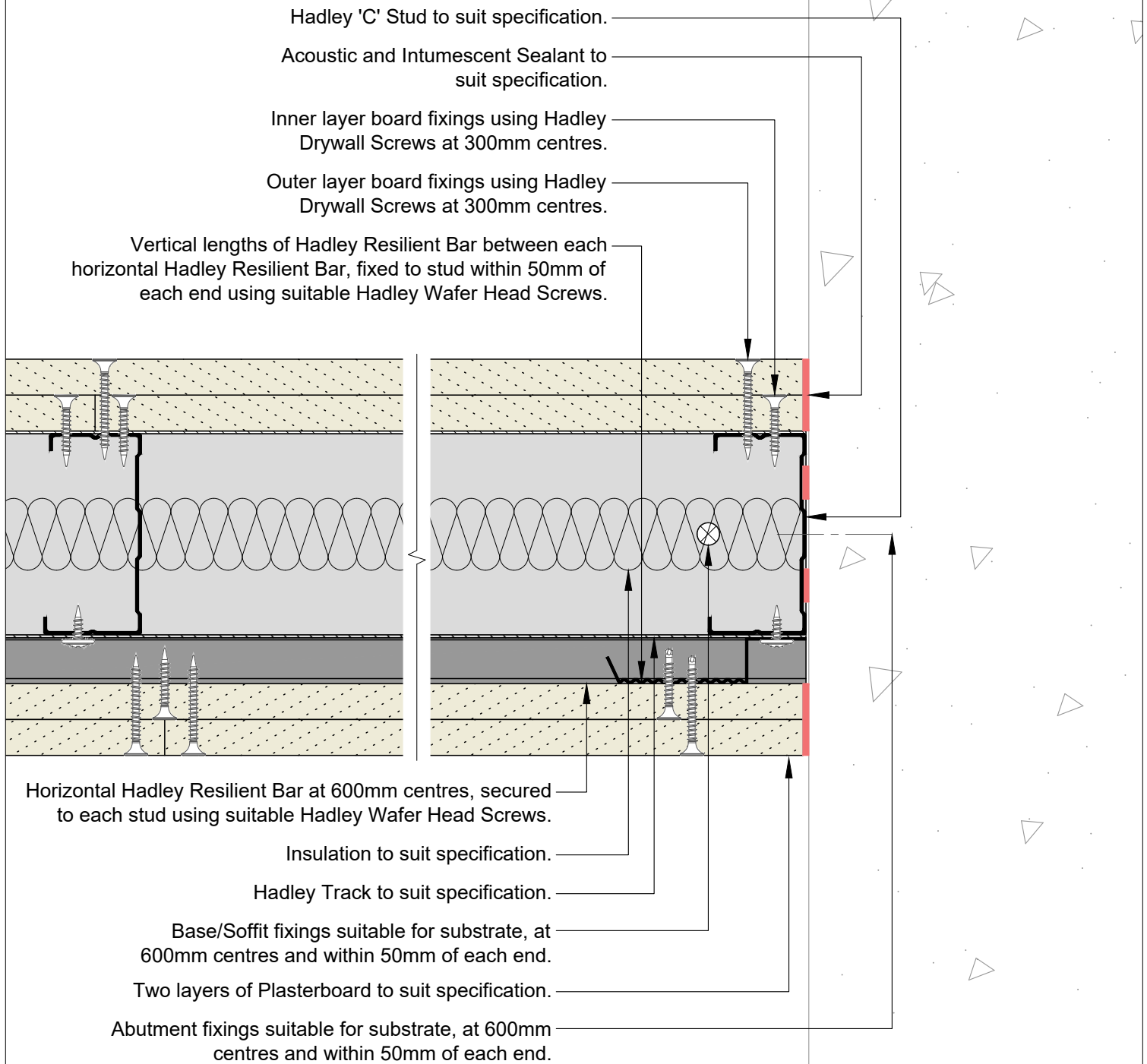


Hadley Group, Downing Street,
Smethwick, West Midlands B66 2PA
Tel: +44 (0) 121 555 1329
E-mail: drylining.technical@hadleygroup.co.uk

Project:
Typical System Detail
See project specification for exact requirements
Title:
Hadley Hush
Resilient Bar-One Sided
Deflection Head up to 120 mins EI Fire Resistance
Scale: 1:2 @ A4 Date: Jul 21 Drawn: FM Checked: JS Dwg No: **HD-HUSH-ONE SIDED-05** Revision: **00**

All performance data and system specifications are for systems constructed with materials & components as shown. The inclusion or substitution of any other manufacturers materials or components could invalidate test data and system performance. The information is provided in good faith and is based upon details received which are assumed to include all relevant facts. No duty of care is owed to the recipient or any other third party and Hadley Industries PLC cannot accept liability in respect of the details shown. None of the content may be distributed or copied directly without prior approval.
© 2021 Hadley Industries Holdings Limited

Board Thickness	Fixing Length
≤15mm	25mm
12.5mm + 12.5mm	25mm + 38mm
12.5mm + 15mm	25mm + 38mm
15mm + 15mm	25mm + 42mm



00	JUL21	First Issue	FM	JS	JS	System details to be read in conjunction with Hadley Group project specification pack. All applications to be built in accordance with British Standards, Building Regulations and Hadley Group tested solutions.
Rev:	Date:	Reason for Issue:	Drn:	Chk:	App:	



Hadley Group, Downing Street,
Smethwick, West Midlands B66 2PA
Tel: +44 (0) 121 555 1329
E-mail: drylining.technical@hadleygroup.co.uk

Project: Typical System Detail See project specification for exact requirements						
Title: Hadley Hush Resilient Bar-One Sided Abutment to Concrete/Blockwork						
Scale:	Date:	Drawn:	Checked:	Dwg No:	Revision:	
1:2 @ A4	Jul 21	FM	JS	HD-HUSH-ONE SIDED-06	00	

All performance data and system specifications are for systems constructed with materials & components as shown. The inclusion or substitution of any other manufacturers materials or components could invalidate test data and system performance. The information is provided in good faith and is based upon details received which are assumed to include all relevant facts. No duty of care is owed to the recipient or any other third party and Hadley Industries PLC cannot accept liability in respect of the details shown. None of the content may be distributed or copied directly without prior approval.

© 2021 Hadley Industries Holdings Limited

Where abutting system is not of equal performance, fill the gap between vertical boards with acoustic and intumescent mastic, subject to confirmation from project acoustic and fire consultants.

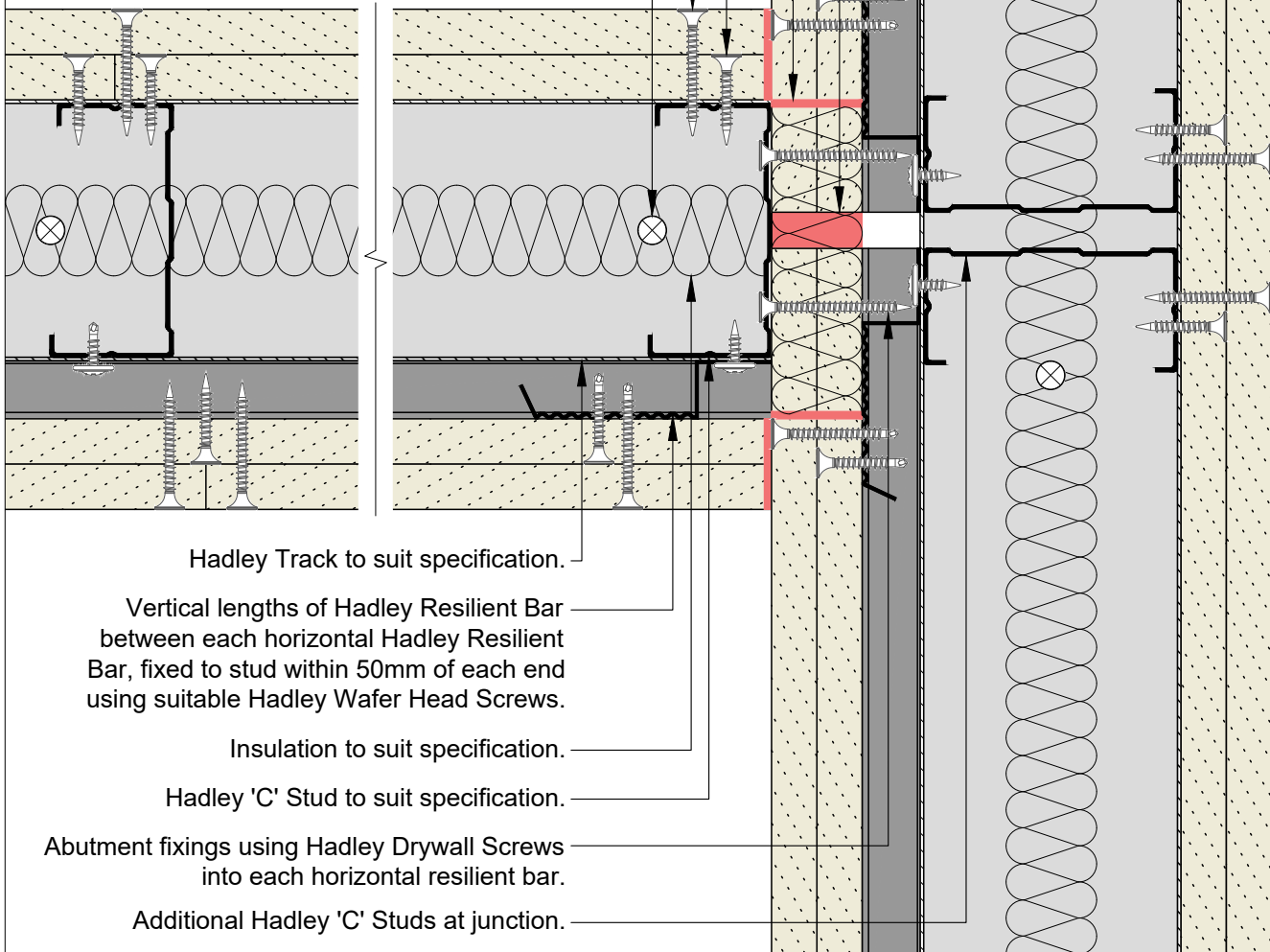
Rock Mineral Wool (60kg/m³) installed to deflection void above boards, sealed with acoustic and intumescent sealant.

Inner layer board fixings using Hadley Drywall Screws at 300mm centres.

Outer layer board fixings using Hadley Drywall Screws at 300mm centres.

Base/Soffit fixings suitable for substrate, at 600mm centres and within 50mm of each end.

Board Thickness	Fixing Length
≤15mm	25mm
12.5mm + 12.5mm	25mm + 38mm
12.5mm + 15mm	25mm + 38mm
15mm + 15mm	25mm + 42mm



Hadley Track to suit specification.

Vertical lengths of Hadley Resilient Bar between each horizontal Hadley Resilient Bar, fixed to stud within 50mm of each end using suitable Hadley Wafer Head Screws.

Insulation to suit specification.

Hadley 'C' Stud to suit specification.

Abutment fixings using Hadley Drywall Screws into each horizontal resilient bar.

Additional Hadley 'C' Studs at junction.

Two layers of Plasterboard to suit specification

System details to be read in conjunction with Hadley Group project specification pack. All applications to be built in accordance with British Standards, Building Regulations and Hadley Group tested solutions.

Rev: _____ Date: _____ Reason for Issue: _____ Dwn: _____ Chk: _____ App: _____

Project: _____



Hadley Group, Downing Street,
Smethwick, West Midlands B66 2PA
Tel: +44 (0) 121 555 1329
E-mail: drylining.technical@hadleygroup.co.uk

Project: _____
Title: **Typical System Detail**
See project specification for exact requirements

Title: **Hadley Hush**
Resilient Bar-One Sided
Abutment to Drylining Partition/Resilient Bar
Flanking detail

Scale: 1:2 @ A4	Date: Jul 21	Drawn: FM	Checked: JS	Dwg No: HD-HUSH-ONE SIDED-07	Revision: 00
-----------------	--------------	-----------	-------------	------------------------------	--------------

All performance data and system specifications are for systems constructed with materials & components as shown. The inclusion or substitution of any other manufacturers materials or components could invalidate test data and system performance. The information is provided in good faith and is based upon details received which are assumed to include all relevant facts. No duty of care is owed to the recipient or any other third party and Hadley Industries PLC cannot accept liability in respect of the details shown. None of the content may be distributed or copied directly without prior approval.

Board Thickness	Fixing Length
≤15mm	25mm
12.5mm + 12.5mm	25mm + 38mm
12.5mm + 15mm	25mm + 38mm
15mm + 15mm	25mm + 42mm

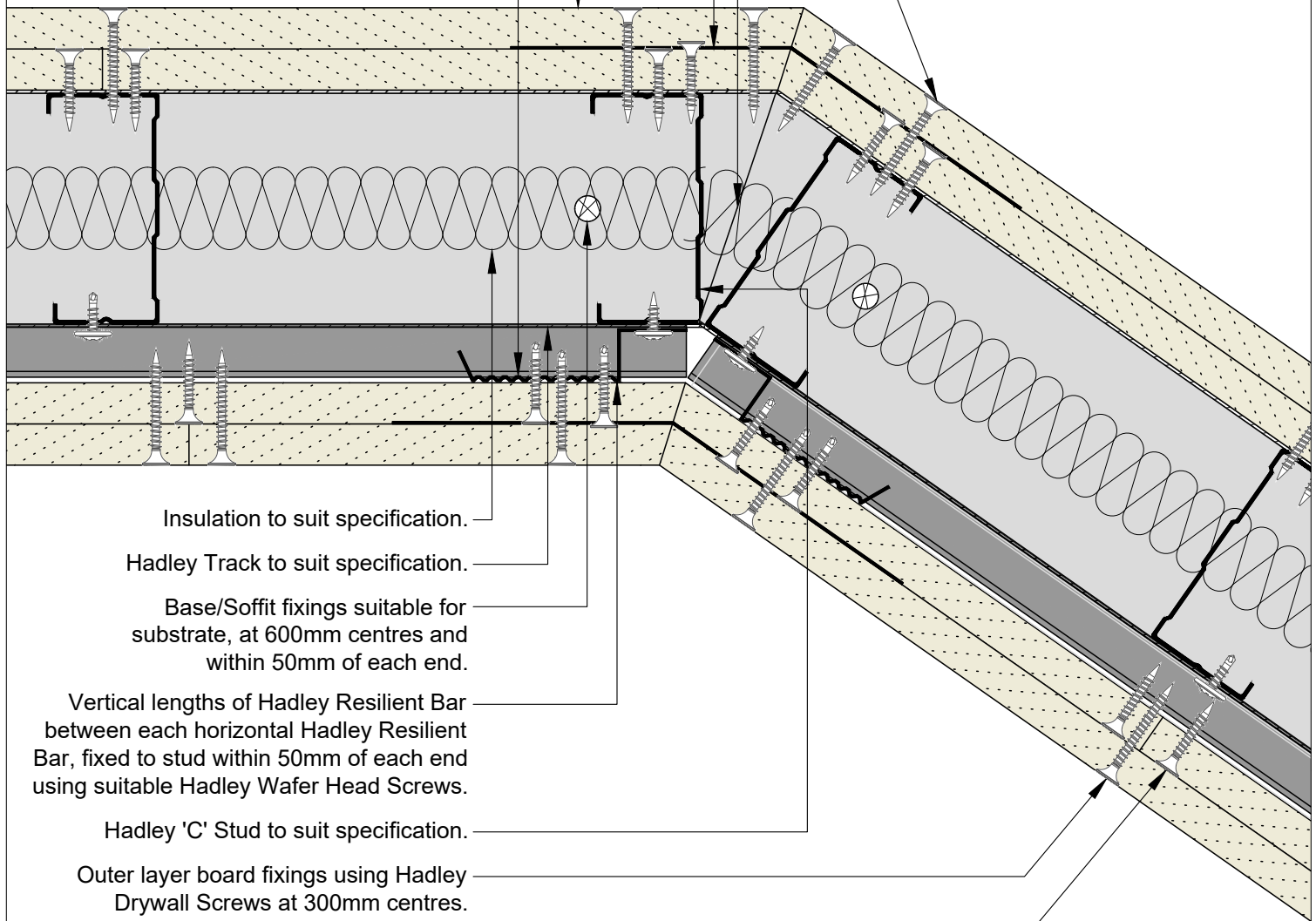
External corner board fixings using Hadley Drywall Screws at 200mm centres.

Splay tracks to ensure that any head fillets are splayed and sealed, ensuring no gaps.

Hadley Internal Fixing Angle secured to horizontal Hadley Resilient Bar or Hadley Stud using Hadley Drywall Screws at 600mm centres and within 50mm of each end.

Two layers of Plasterboard to suit specification.

Horizontal Hadley Resilient Bar at 600mm centres, secured to each stud using suitable Hadley Wafer Head Screws.



Insulation to suit specification.

Hadley Track to suit specification.

Base/Soffit fixings suitable for substrate, at 600mm centres and within 50mm of each end.

Vertical lengths of Hadley Resilient Bar between each horizontal Hadley Resilient Bar, fixed to stud within 50mm of each end using suitable Hadley Wafer Head Screws.

Hadley 'C' Stud to suit specification.

Outer layer board fixings using Hadley Drywall Screws at 300mm centres.

Inner layer board fixings using Hadley Drywall Screws at 300mm centres.

00	JUL21	First Issue	FM	JS	JS	System details to be read in conjunction with Hadley Group project specification pack. All applications to be built in accordance with British Standards, Building Regulations and Hadley Group tested solutions.
Rev:	Date:	Reason for Issue:	Drn:	Chk:	App:	



Hadley Group, Downing Street,
Smethwick, West Midlands B66 2PA
Tel: +44 (0) 121 555 1329
E-mail: drylining.technical@hadleygroup.co.uk

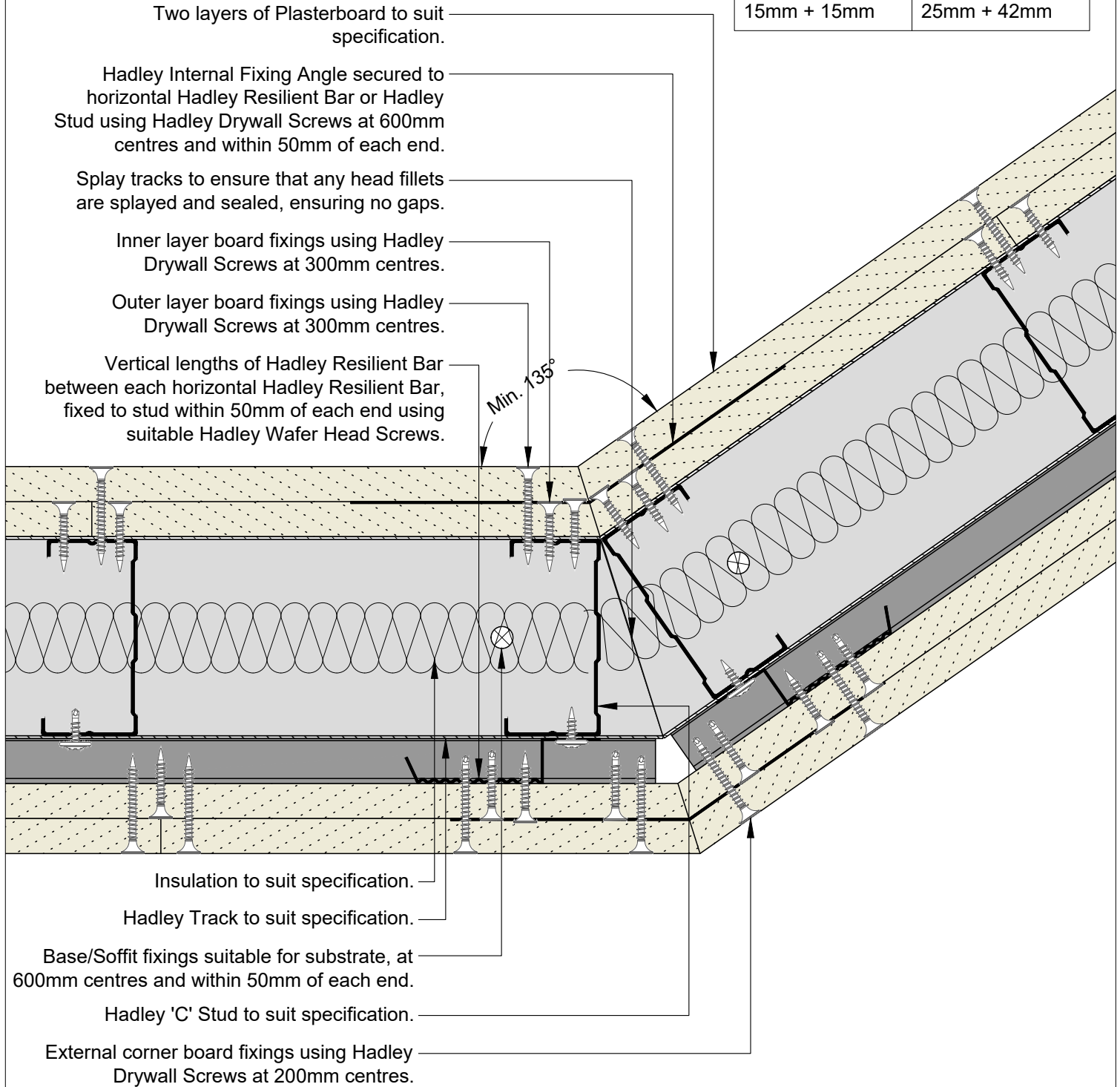
Project:
Typical System Detail
See project specification for exact requirements

Title:
Hadley Hush
Resilient Bar-One Sided
Splayed Corner Internal

Scale:	Date:	Drawn:	Checked:	Dwg No:	Revision:
1:2 @ A4	Jul 21	FM	JS	HD-HUSH-ONE SIDED-08	00

All performance data and system specifications are for systems constructed with materials & components as shown. The inclusion or substitution of any other manufacturers materials or components could invalidate test data and system performance. The information is provided in good faith and is based upon details received which are assumed to include all relevant facts. No duty of care is owed to the recipient or any other third party and Hadley Industries PLC cannot accept liability in respect of the details shown. None of the content may be distributed or copied directly without prior approval.

Board Thickness	Fixing Length
≤15mm	25mm
12.5mm + 12.5mm	25mm + 38mm
12.5mm + 15mm	25mm + 38mm
15mm + 15mm	25mm + 42mm



00	JUL21	First Issue	FM	JS	JS	System details to be read in conjunction with Hadley Group project specification pack. All applications to be built in accordance with British Standards, Building Regulations and Hadley Group tested solutions.
Rev:	Date:	Reason for Issue:	Drn:	Chk:	App:	



Hadley Group, Downing Street,
Smethwick, West Midlands B66 2PA
Tel: +44 (0) 121 555 1329
E-mail: drylining.technical@hadleygroup.co.uk

Project: Typical System Detail See project specification for exact requirements						
Title: Hadley Hush Resilient Bar-One Sided Splayed Corner External						
Scale: 1:2 @ A4	Date: Jul 21	Drawn: FM	Checked: JS	Dwg No: HD-HUSH-ONE SIDED-09	Revision: 00	

All performance data and system specifications are for systems constructed with materials & components as shown. The inclusion or substitution of any other manufacturers materials or components could invalidate test data and system performance. The information is provided in good faith and is based upon details received which are assumed to include all relevant facts. No duty of care is owed to the recipient or any other third party and Hadley Industries PLC cannot accept liability in respect of the details shown. None of the content may be distributed or copied directly without prior approval.
© 2021 Hadley Industries Holdings Limited

Two layers of Plasterboard to suit specification.

Abutment fixings using Hadley Drywall Screws at into Hadley Stud at 600mm centres and within 50mm of each end.

Acoustic and Intumescent Sealant to suit specification.

Inner layer board fixings using Hadley Drywall Screws at 300mm centres.

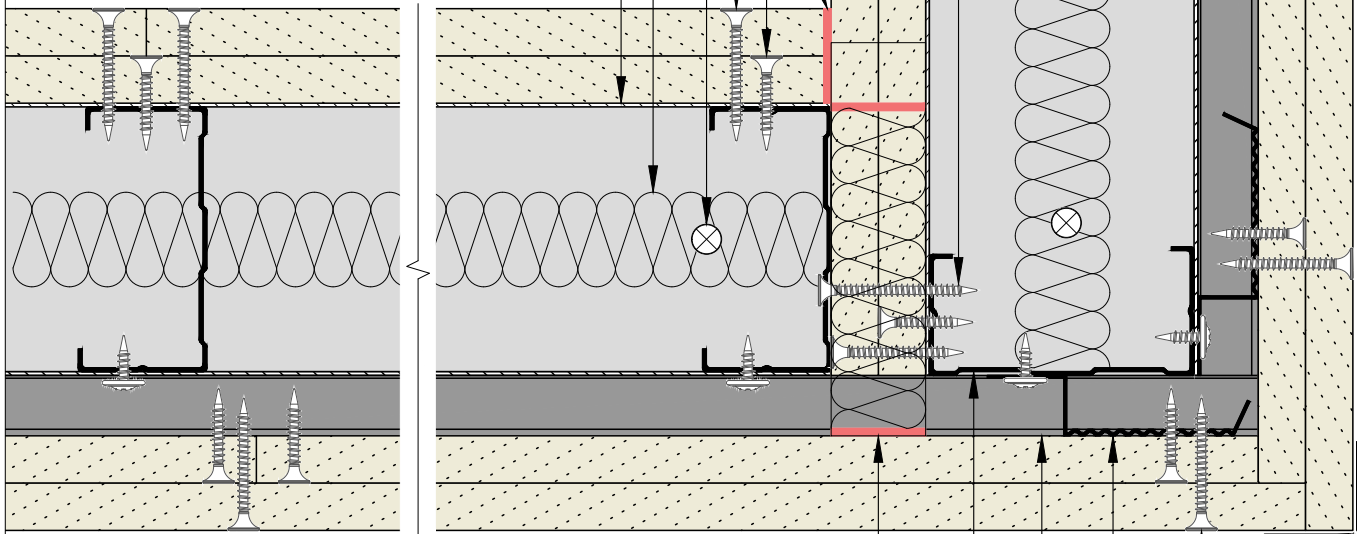
Outer layer board fixings using Hadley Drywall Screws at 300mm centres.

Base/Soffit fixings suitable for substrate, at 600mm centres and within 50mm of each end.

Insulation to suit specification.

Hadley Track to suit specification.

Board Thickness	Fixing Length
≤15mm	25mm
12.5mm + 12.5mm	25mm + 38mm
12.5mm + 15mm	25mm + 38mm
15mm + 15mm	25mm + 42mm



Rock Mineral Wool (60kg/m³) installed to deflection void above boards, sealed with Acoustic and Intumescent Sealant.

Hadley 'C' Stud to suit specification.

Ensure head track fillets extend over the resilient bars.

Vertical lengths of Hadley Resilient Bar between each horizontal Hadley Resilient Bar, fixed to stud within 50mm of each end using suitable Hadley Wafer Head Screws.

External corner fixings using Hadley Drywall Screws at 200mm centres.

Hadley Corner Bead.

00	JUL21	First Issue	FM	JS	JS	System details to be read in conjunction with Hadley Group project specification pack. All applications to be built in accordance with British Standards, Building Regulations and Hadley Group tested solutions.
Rev:	Date:	Reason for Issue:	Drn:	Chk:	App:	



Hadley Group, Downing Street,
Smethwick, West Midlands B66 2PA

Tel: +44 (0) 121 555 1329

E-mail: drylining.technical@hadleygroup.co.uk

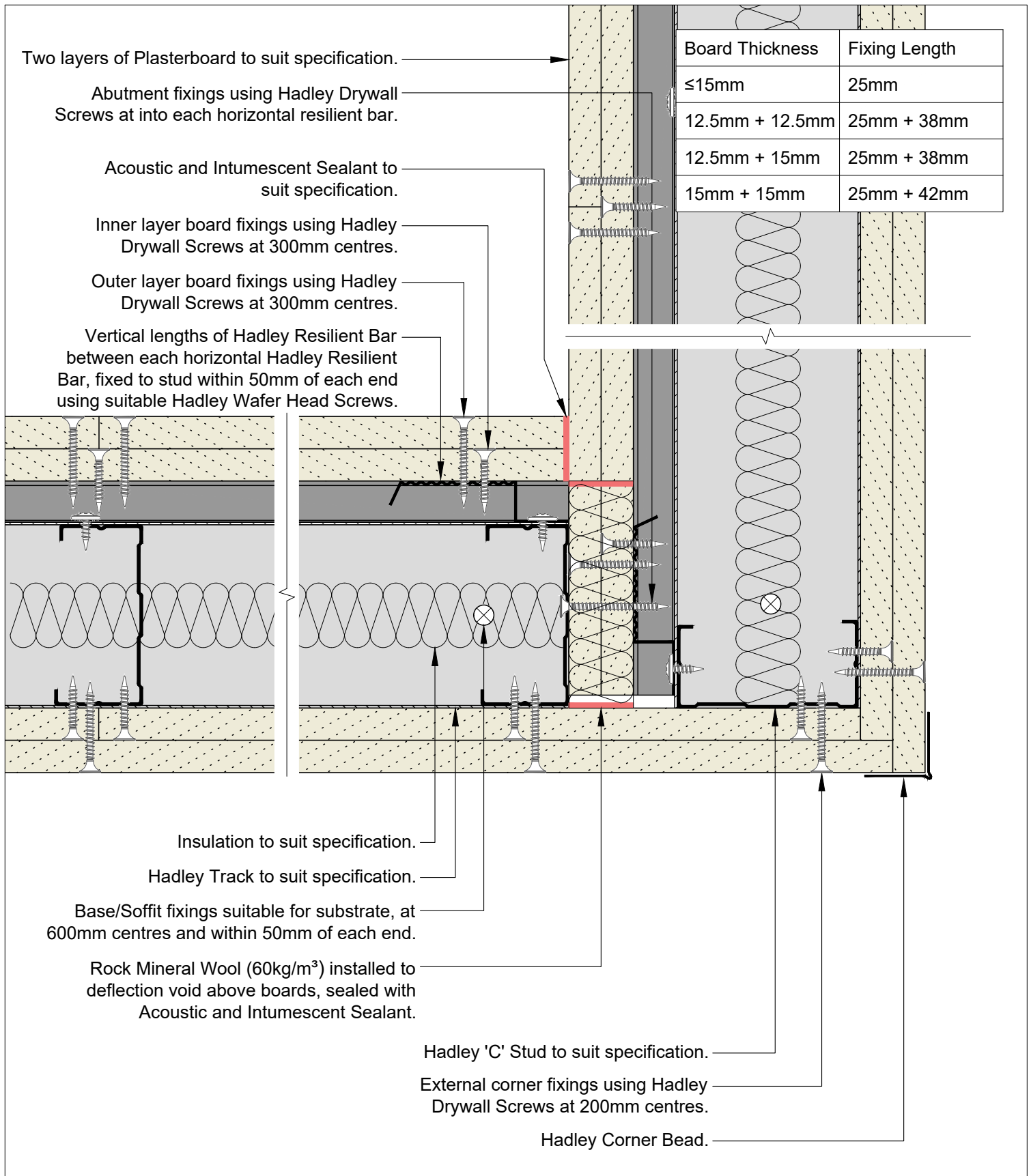
Project: Typical System Detail

See project specification for exact requirements

Title:
Hadley Hush
Resilient Bar-One Sided
90° Corner External

Scale:	Date:	Drawn:	Checked:	Dwg No:	Revision:
1:2 @ A4	Jul 21	FM	JS	HD-HUSH-ONE SIDED-10	00

All performance data and system specifications are for systems constructed with materials & components as shown. The inclusion or substitution of any other manufacturers materials or components could invalidate test data and system performance. The information is provided in good faith and is based upon details received which are assumed to include all relevant facts. No duty of care is owed to the recipient or any other third party and Hadley Industries PLC cannot accept liability in respect of the details shown. None of the content may be distributed or copied directly without prior approval.



00	JUL21	First Issue	FM	JS	JS	System details to be read in conjunction with Hadley Group project specification pack. All applications to be built in accordance with British Standards, Building Regulations and Hadley Group tested solutions.
Rev:	Date:	Reason for Issue:	Drn:	Chk:	App:	



Hadley Group, Downing Street,
Smethwick, West Midlands B66 2PA
Tel: +44 (0) 121 555 1329
E-mail: drylining.technical@hadleygroup.co.uk

Project: Typical System Detail See project specification for exact requirements						
Title: Hadley Hush Resilient Bar-One Sided 90° Corner Internal						
Scale:	Date:	Drawn:	Checked:	Dwg No:	Revision:	
1:2 @ A4	Jul 21	FM	JS	HD-HUSH-ONE SIDED-11	00	

All performance data and system specifications are for systems constructed with materials & components as shown. The inclusion or substitution of any other manufacturers materials or components could invalidate test data and system performance. The information is provided in good faith and is based upon details received which are assumed to include all relevant facts. No duty of care is owed to the recipient or any other third party and Hadley Industries PLC cannot accept liability in respect of the details shown. None of the content may be distributed or copied directly without prior approval.

© 2021 Hadley Industries Holdings Limited

Stud and track depths and gauge to suit specification.
Fixing type to suit metalwork gauge.

Avoid outer board joint located on the door jamb.

Horizontal Hadley Resilient Bar at 600mm vertical centres,
secured to each stud using suitable Hadley Wafer Head Screws.

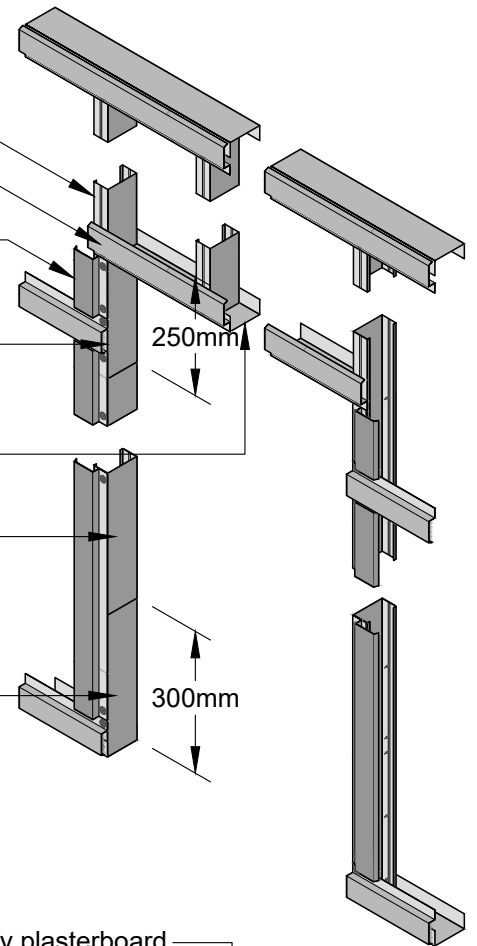
Vertical lengths of Hadley Resilient Bar between each
horizontal Hadley Resilient Bar, fixed to stud within 50mm of
each end using suitable Hadley Wafer Head Screws.

Hadley Track cut and bent to extend 250mm down stud, fixed
through both flanges using 2N^o Hadley Wafer Head Drywall
Screws each side.

Hadley Track to suit specification.
Lintel detail to suit opening width.

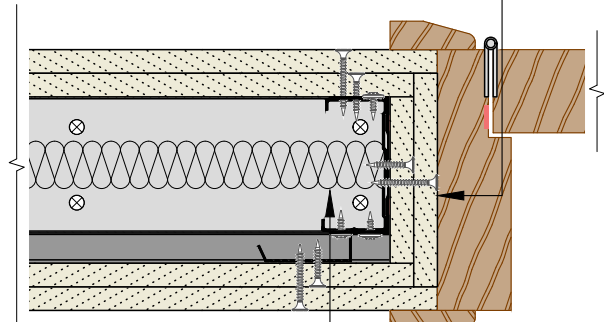
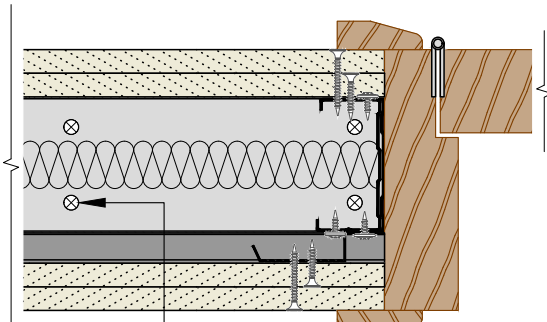
Hadley Track sleeved over stud between returned channels at
opening head & base, fixed through both flanges using Hadley
Wafer Head Drywall Screws at 300mm centres and within 50mm
of each end for each side.

Hadley Track cut and bent to extend vertically 300mm, fixed
through both flanges using 3N^o Hadley Wafer Head Drywall
Screws each side.



Plan View

For fire rated openings, apply plasterboard
as per face board specification to the reveals.



Indicative door frame and
architraves by others.

Base track fixed with pairs of
suitable fixings 150mm apart.

Timber fillets, omitted for
clarity, within door jamb to suit
door manufacturers
application requirements and
tested solution.

00	JUL21	First Issue	FM	JS	JS	System details to be read in conjunction with Hadley Group project specification pack. All applications to be built in accordance with British Standards, Building Regulations and Hadley Group tested solutions.
Rev:	Date:	Reason for Issue:	Drn:	Chk:	App:	



Hadley Group, Downing Street,
Smethwick, West Midlands B66 2PA
Tel: +44 (0) 121 555 1329
E-mail: drylining.technical@hadleygroup.co.uk

Project: Typical System Detail See project specification for exact requirements						
Title: Hadley Hush Resilient Bar-One Sided Doorway 0-60 kg						
Scale: NTS	Date: Jul 21	Drawn: FM	Checked: JS	Dwg No: HD-HUSH-ONE SIDED-12	Revision: 00	

All performance data and system specifications are for systems constructed with materials & components as shown. The inclusion or substitution of any other manufacturers materials or components could invalidate test data and system performance. The information is provided in good faith and is based upon details received which are assumed to include all relevant facts. No duty of care is owed to the recipient or any other third party and Hadley Industries PLC cannot accept liability in respect of the details shown. None of the content may be distributed or copied directly without prior approval.

Stud and track depths and gauge to suit specification.
Fixing type to suit metalwork gauge.

Additional Hadley Stud located up to 150mm from jamb stud.

Avoid outer board joint located on the door jamb.

Horizontal Hadley Resilient Bar at 600mm vertical centres, secured to each stud using suitable Hadley Wafer Head Screws.

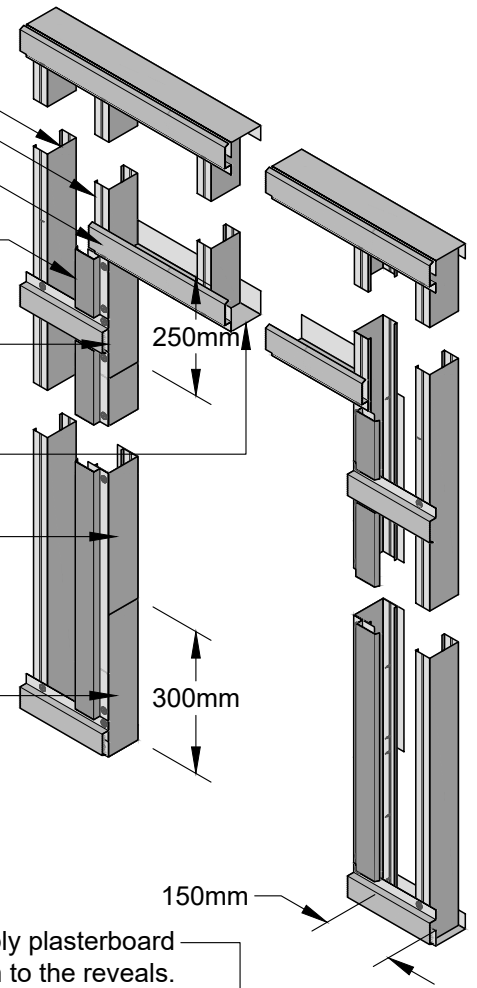
Vertical lengths of Hadley Resilient Bar between each horizontal Hadley Resilient Bar, fixed to stud within 50mm of each end using suitable Hadley Wafer Head Screws.

Hadley Track cut and bent to extend 250mm down stud, fixed through both flanges using 2Nø Hadley Wafer Head Drywall Screws each side.

Hadley Track to suit specification.
Lintel detail to suit opening width.

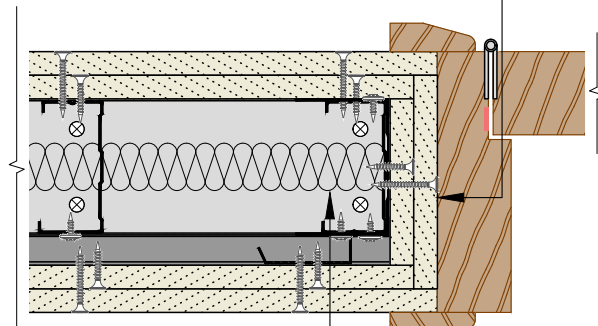
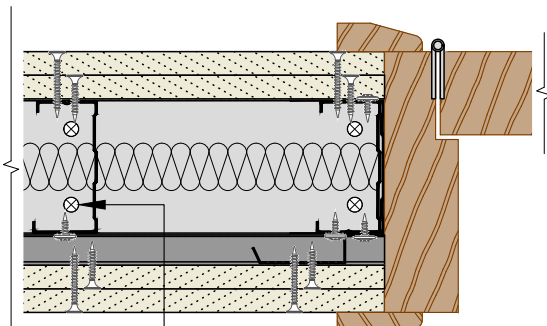
Hadley Track sleeved over stud between returned channels at opening head & base, fixed through both flanges using Hadley Wafer Head Drywall Screws at 300mm centres and within 50mm of each end for each side.

Hadley Track cut and bent to extend vertically 300mm, fixed through both flanges using 3Nø Hadley Wafer Head Drywall Screws each side.



Plan View

For fire rated openings, apply plasterboard as per face board specification to the reveals.



Indicative door frame and architraves by others.

Base track fixed with pairs of suitable fixings 150mm apart.

Timber fillets, omitted for clarity, within door jamb to suit door manufacturers application requirements and tested solution.

00	JUL21	First Issue	FM	JS	JS	System details to be read in conjunction with Hadley Group project specification pack. All applications to be built in accordance with British Standards, Building Regulations and Hadley Group tested solutions.
Rev:	Date:	Reason for Issue:	Drn:	Chk:	App:	



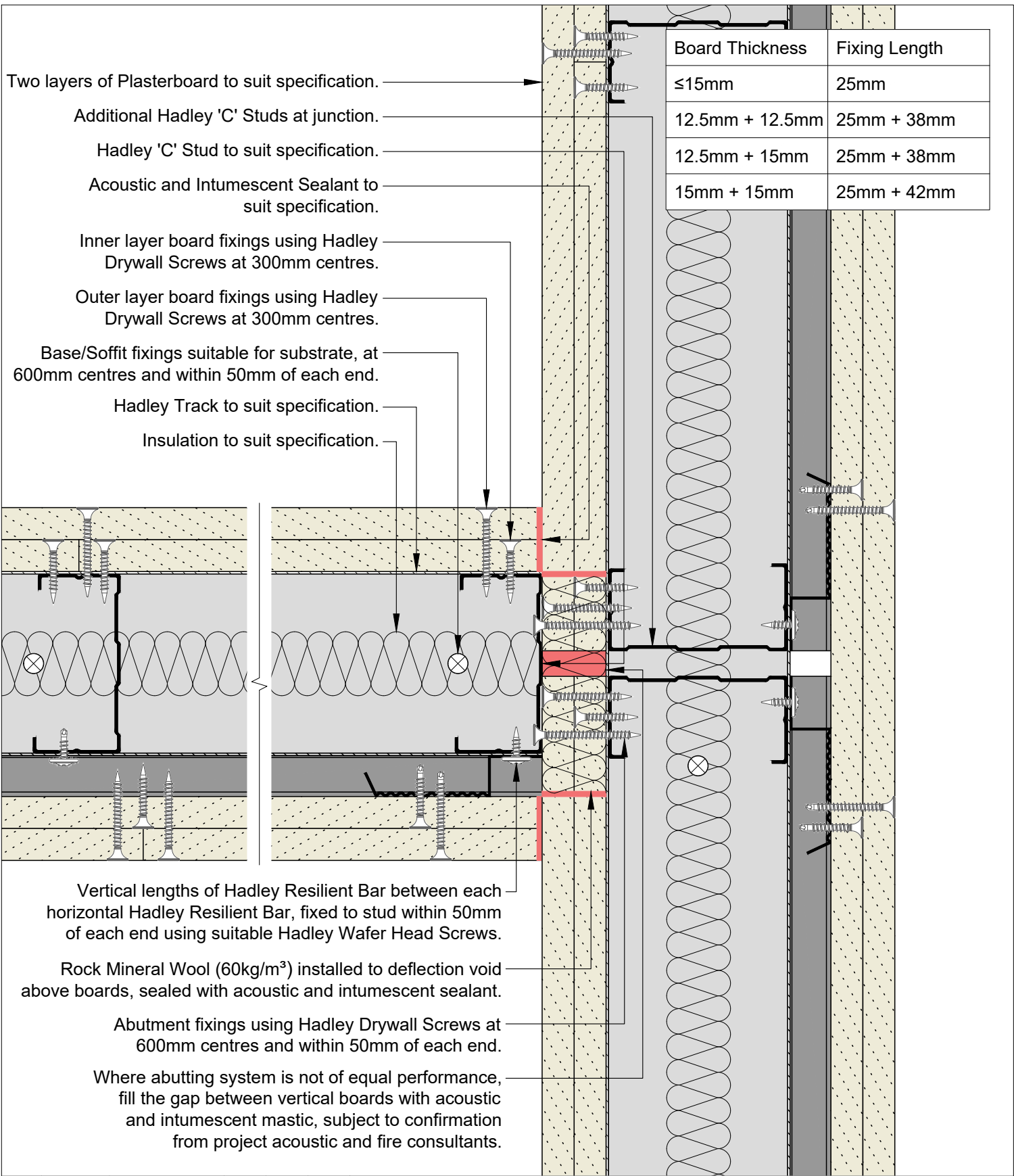
Hadley Group, Downing Street,
Smethwick, West Midlands B66 2PA
Tel: +44 (0) 121 555 1329
E-mail: drylining.technical@hadleygroup.co.uk

Project: Typical System Detail
See project specification for exact requirements

Title:
Hadley Hush
Resilient Bar-One Sided
Doorway 61-100 kg

Scale:	Date:	Drawn:	Checked:	Dwg No:	Revision:
NTS	Jul 21	FM	JS	HD-HUSH-ONE SIDED-13	00

All performance data and system specifications are for systems constructed with materials & components as shown. The inclusion or substitution of any other manufacturers materials or components could invalidate test data and system performance. The information is provided in good faith and is based upon details received which are assumed to include all relevant facts. No duty of care is owed to the recipient or any other third party and Hadley Industries PLC cannot accept liability in respect of the details shown. None of the content may be distributed or copied directly without prior approval.



Two layers of Plasterboard to suit specification.

Additional Hadley 'C' Studs at junction.

Hadley 'C' Stud to suit specification.

Acoustic and Intumescent Sealant to suit specification.

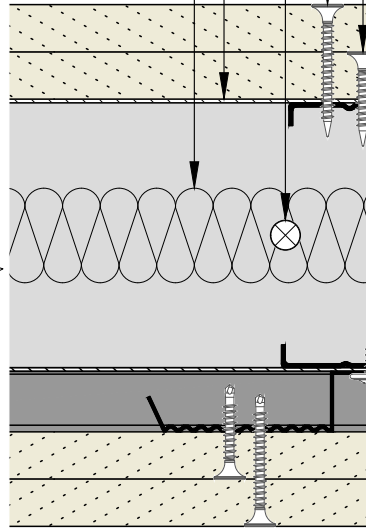
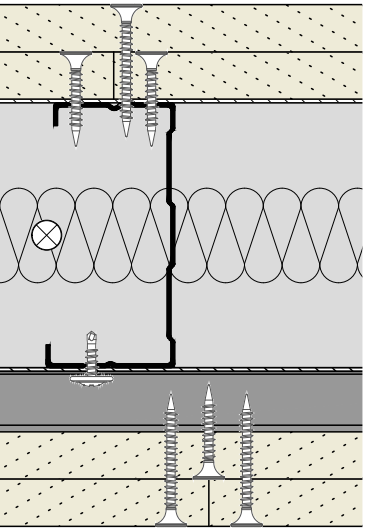
Inner layer board fixings using Hadley Drywall Screws at 300mm centres.

Outer layer board fixings using Hadley Drywall Screws at 300mm centres.

Base/Soffit fixings suitable for substrate, at 600mm centres and within 50mm of each end.

Hadley Track to suit specification.

Insulation to suit specification.



Vertical lengths of Hadley Resilient Bar between each horizontal Hadley Resilient Bar, fixed to stud within 50mm of each end using suitable Hadley Wafer Head Screws.

Rock Mineral Wool (60kg/m³) installed to deflection void above boards, sealed with acoustic and intumescent sealant.

Abutment fixings using Hadley Drywall Screws at 600mm centres and within 50mm of each end.

Where abutting system is not of equal performance, fill the gap between vertical boards with acoustic and intumescent mastic, subject to confirmation from project acoustic and fire consultants.

00	JUL21	First Issue	FM	JS	JS	System details to be read in conjunction with Hadley Group project specification pack. All applications to be built in accordance with British Standards, Building Regulations and Hadley Group tested solutions.
Rev:	Date:	Reason for Issue:	Drn:	Chk:	App:	



Hadley Group, Downing Street,
Smethwick, West Midlands B66 2PA
Tel: +44 (0) 121 555 1329
E-mail: drylining.technical@hadleygroup.co.uk

Project: Typical System Detail
See project specification for exact requirements

Title: **Hadley Hush**
Resilient Bar-One Sided
Abutment to Drylining Partition/Stud
Flanking detail

Scale: 1:2 @ A4	Date: Jul 21	Drawn: FM	Checked: JS	Dwg No: HD-HUSH-ONE SIDED-14	Revision: 00
-----------------	--------------	-----------	-------------	------------------------------	--------------

All performance data and system specifications are for systems constructed with materials & components as shown. The inclusion or substitution of any other manufacturers materials or components could invalidate test data and system performance. The information is provided in good faith and is based upon details received which are assumed to include all relevant facts. No duty of care is owed to the recipient or any other third party and Hadley Industries PLC cannot accept liability in respect of the details shown. None of the content may be distributed or copied directly without prior approval.

© 2021 Hadley Industries Holdings Limited



HADLEY TECHNICAL SUPPORT

☎ +44 (0) 121 555 1329

✉ drylining.technical@hadleygroup.com