



Hadley Drylining Standard Details

HadleyDuo
2022 Version 1

HADLEY DRYLINING SALES

☎ +44 (0) 121 555 1300
✉ dryliningsales@hadleygroup.com

HADLEY TECHNICAL SUPPORT

☎ +44 (0) 121 555 1329
✉ drylining.technical@hadleygroup.com



Hadley Drylining Standard Details

HadleyDuo – Double Layer
2022 Version 1

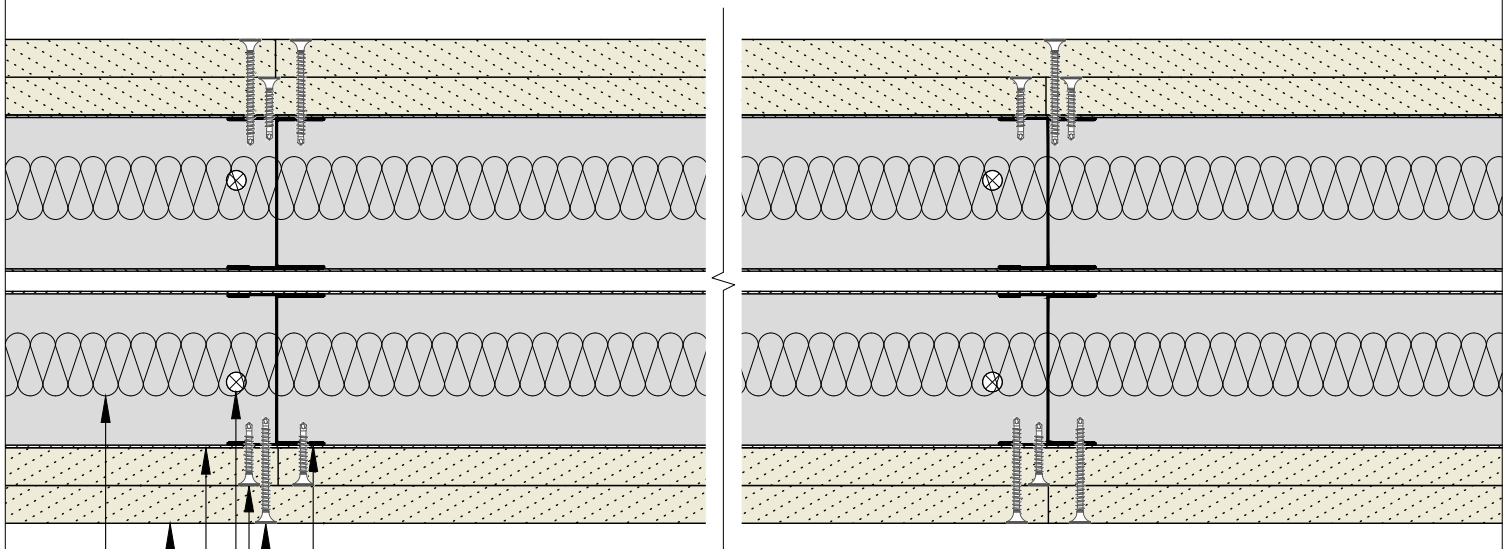
HADLEY DRYLINING SALES

☎ +44 (0) 121 555 1300
✉ dryliningsales@hadleygroup.com

HADLEY TECHNICAL SUPPORT

☎ +44 (0) 121 555 1329
✉ drylining.technical@hadleygroup.com

Board Thickness	Fixing Length
≤15mm	25mm
12.5mm + 12.5mm	25mm + 38mm
12.5mm + 15mm	25mm + 38mm
15mm + 15mm	25mm + 42mm



- 2 rows of Hadley 'I' Stud to suit specification.
- Outer layer board fixings using Hadley Jack-point Screws at 300mm centers.
- Inner layer board fixings using Hadley Jack-point Screws at 300mm centers.
- Base/Soffit fixings suitable for substrate, at 600mm centres and within 50mm of each end.
- Hadley Track to suit specification.
- Two layers of plasterboard to suit specification.
- Insulation to suit specification.

00	JUL21	First Issue	FM	JS	JS	System details to be read in conjunction with Hadley Group project specification pack. All applications to be built in accordance with British Standards, Building Regulations and Hadley Group tested solutions.
Rev:	Date:	Reason for Issue:	Drn:	Chk:	App:	

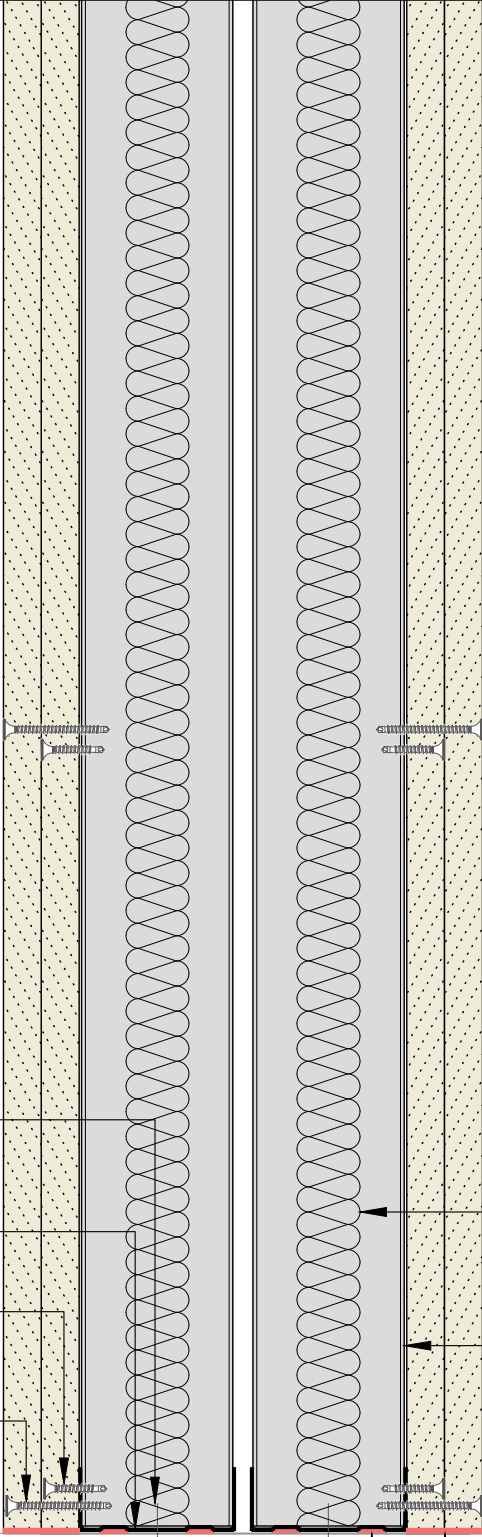


Hadley Group, Downing Street,
Smethwick, West Midlands B66 2PA
Tel: +44 (0) 121 555 1329
E-mail: drylining.technical@hadleygroup.co.uk

Project: Typical System Detail See project specification for exact requirements						
Title: Hadley Duo Partition - Twin Frame IWL Plan						
Scale: 1:3 @ A4	Date: Jul 21	Drawn: FM	Checked: JS	Dwg No: HD-DUO-01	Revision: 00	

All performance data and system specifications are for systems constructed with materials & components as shown. The inclusion or substitution of any other manufacturers materials or components could invalidate test data and system performance. The information is provided in good faith and is based upon details received which are assumed to include all relevant facts. No duty of care is owed to the recipient or any other third party and Hadley Industries PLC cannot accept liability in respect of the details shown. None of the content may be distributed or copied directly without prior approval.

Board Thickness	Fixing Length
≤15mm	25mm
12.5mm + 12.5mm	25mm + 38mm
12.5mm + 15mm	25mm + 38mm
15mm + 15mm	25mm + 42mm



Base fixings suitable for substrate, at 600mm centres and within 50mm of each end.

Hadley Track to suit specification.

Inner layer board fixings using Hadley Drywall Screws at 300mm centres.

Outer layer board fixings using Hadley Drywall Screws at 300mm centres.

Insulation to suit specification.

Two layers of plasterboard to suit specification.

2 rows of Hadley 'I' Stud to suit specification.

Acoustic and intumescent sealant to suit specification.

00	JUL21	First Issue	FM	JS	JS	System details to be read in conjunction with Hadley Group project specification pack. All applications to be built in accordance with British Standards, Building Regulations and Hadley Group tested solutions.
Rev:	Date:	Reason for Issue:	Drn:	Chk:	App:	

Project:
Typical System Detail
 See project specification for exact requirements

Title:
Hadley Duo
 Partition - Twin Frame IWL
 Base

Scale:	Date:	Drawn:	Checked:	Dwg No:	Revision:
1:3 @ A4	Jul 21	FM	JS	HD-DUO-02	00



Hadley Group, Downing Street,
 Smethwick, West Midlands B66 2PA
 Tel: +44 (0) 121 555 1329
 E-mail: drylining.technical@hadleygroup.co.uk

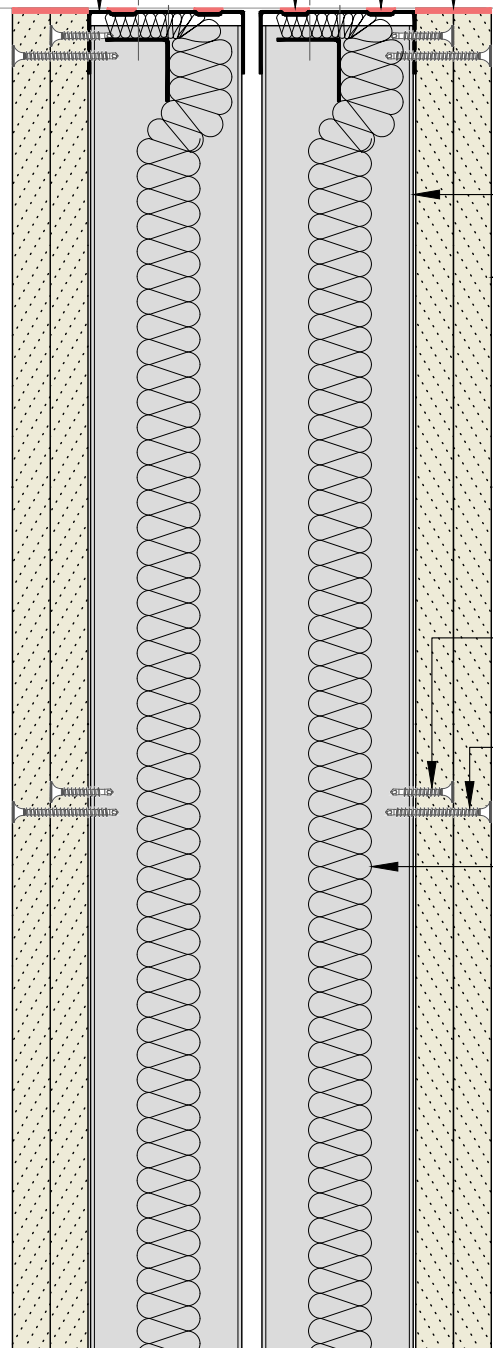
All performance data and system specifications are for systems constructed with materials & components as shown. The inclusion or substitution of any other manufacturers materials or components could invalidate test data and system performance. The information is provided in good faith and is based upon details received which are assumed to include all relevant facts. No duty of care is owed to the recipient or any other third party and Hadley Industries PLC cannot accept liability in respect of the details shown. None of the content may be distributed or copied directly without prior approval.

Board Thickness	Fixing Length
≤15mm	25mm
12.5mm + 12.5mm	25mm + 38mm
12.5mm + 15mm	25mm + 38mm
15mm + 15mm	25mm + 42mm

Acoustic and intumescent sealant to suit specification.

Soffit fixings suitable for substrate, at 600mm centres and within 50mm of each end.

Hadley Track to suit specification.



2 rows of Hadley 'I' Stud to suit specification.

Two layers of plasterboard to suit specification.

Inner layer board fixings using Hadley Drywall Screws at 300mm centres.

Outer layer board fixings using Hadley Drywall Screws at 300mm centres.

Insulation to suit specification, hung from top of partition using Hadley 25x25mm Steel Angle, secured through to soffit using suitable fixings within 50mm of each end.

00	JUL21	First Issue	FM	JS	JS	System details to be read in conjunction with Hadley Group project specification pack. All applications to be built in accordance with British Standards, Building Regulations and Hadley Group tested solutions.
Rev:	Date:	Reason for Issue:	Drn:	Chk:	App:	



Hadley Group, Downing Street,
Smethwick, West Midlands B66 2PA

Tel: +44 (0) 121 555 1329

E-mail: drylining.technical@hadleygroup.co.uk

Project: Typical System Detail

See project specification for exact requirements

Title:

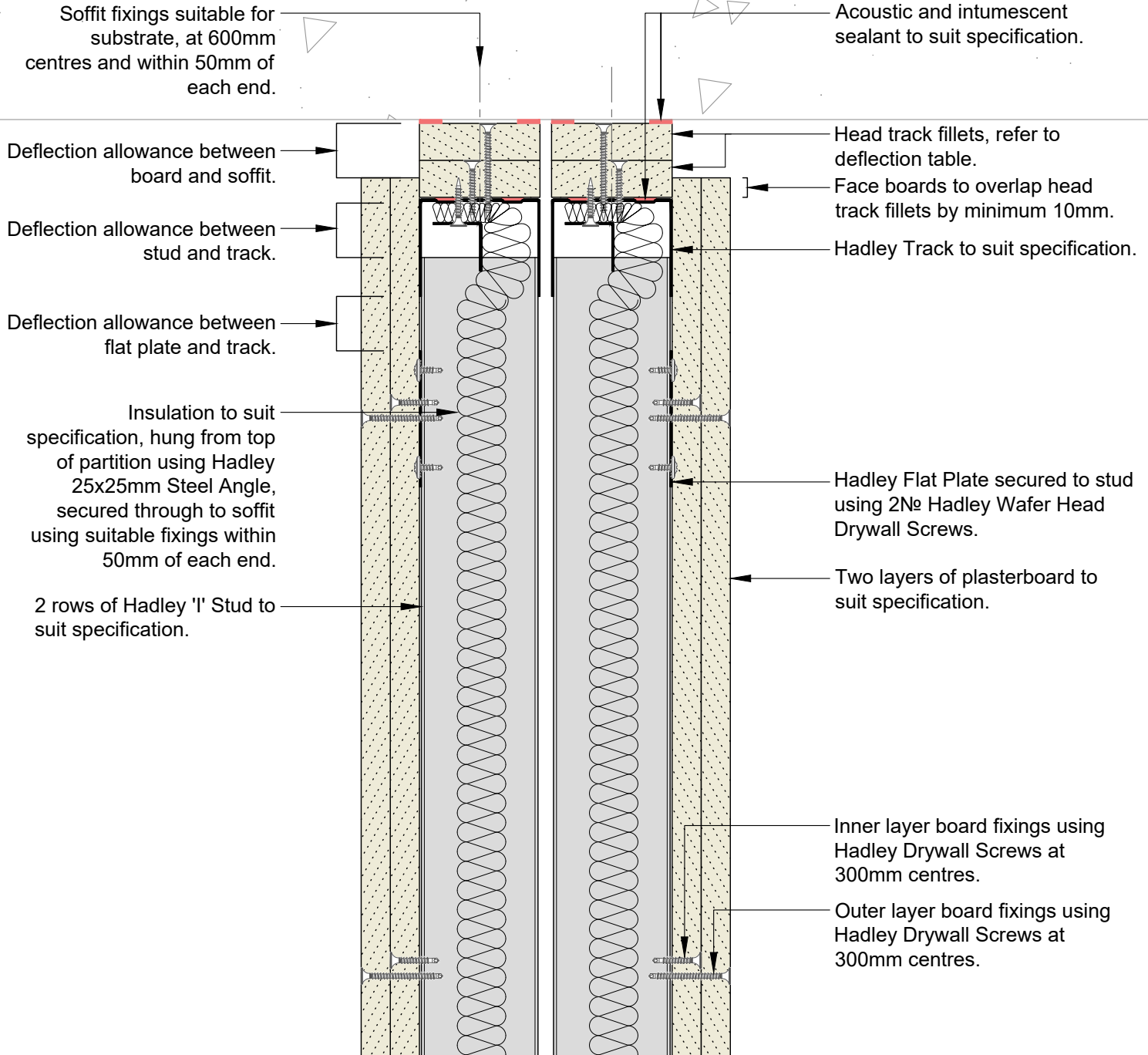
Hadley Duo
Partition - Twin Frame IWL
Fixed Head

Scale:	Date:	Drawn:	Checked:	Dwg No:	Revision:
1:3 @ A4	Jul 21	FM	JS	HD-DUO-03	00

All performance data and system specifications are for systems constructed with materials & components as shown. The inclusion or substitution of any other manufacturers materials or components could invalidate test data and system performance. The information is provided in good faith and is based upon details received which are assumed to include all relevant facts. No duty of care is owed to the recipient or any other third party and Hadley Industries PLC cannot accept liability in respect of the details shown. None of the content may be distributed or copied directly without prior approval.

Min. Deflection to suit structural engineer design	Min. Head Track Fillet(s)	Hadley Track Flange
5mm	1x15mm Type F Plasterboard	50mm
9mm	1x19mm CoreBoard	50mm
15mm	2x12.5mm Type F Plasterboard	50mm
20mm	2x15mm Type F Plasterboard	50mm
28mm	2x19mm CoreBoard	50mm
35mm	3x15mm Type F Plasterboard	70mm

Board Thickness	Fixing Length
≤15mm	25mm
12.5mm + 12.5mm	25mm + 38mm
12.5mm + 15mm	25mm + 38mm
15mm + 15mm	25mm + 42mm



00 JUL21 First Issue FM JS JS System details to be read in conjunction with Hadley Group project specification pack. All applications to be built in accordance with British Standards, Building Regulations and Hadley Group tested solutions.

Rev: Date: Reason for Issue: Drn: Chk: App: Project:



Hadley Group, Downing Street,
Smethwick, West Midlands B66 2PA
Tel: +44 (0) 121 555 1329
E-mail: drylining.technical@hadleygroup.co.uk

Typical System Detail
See project specification for exact requirements

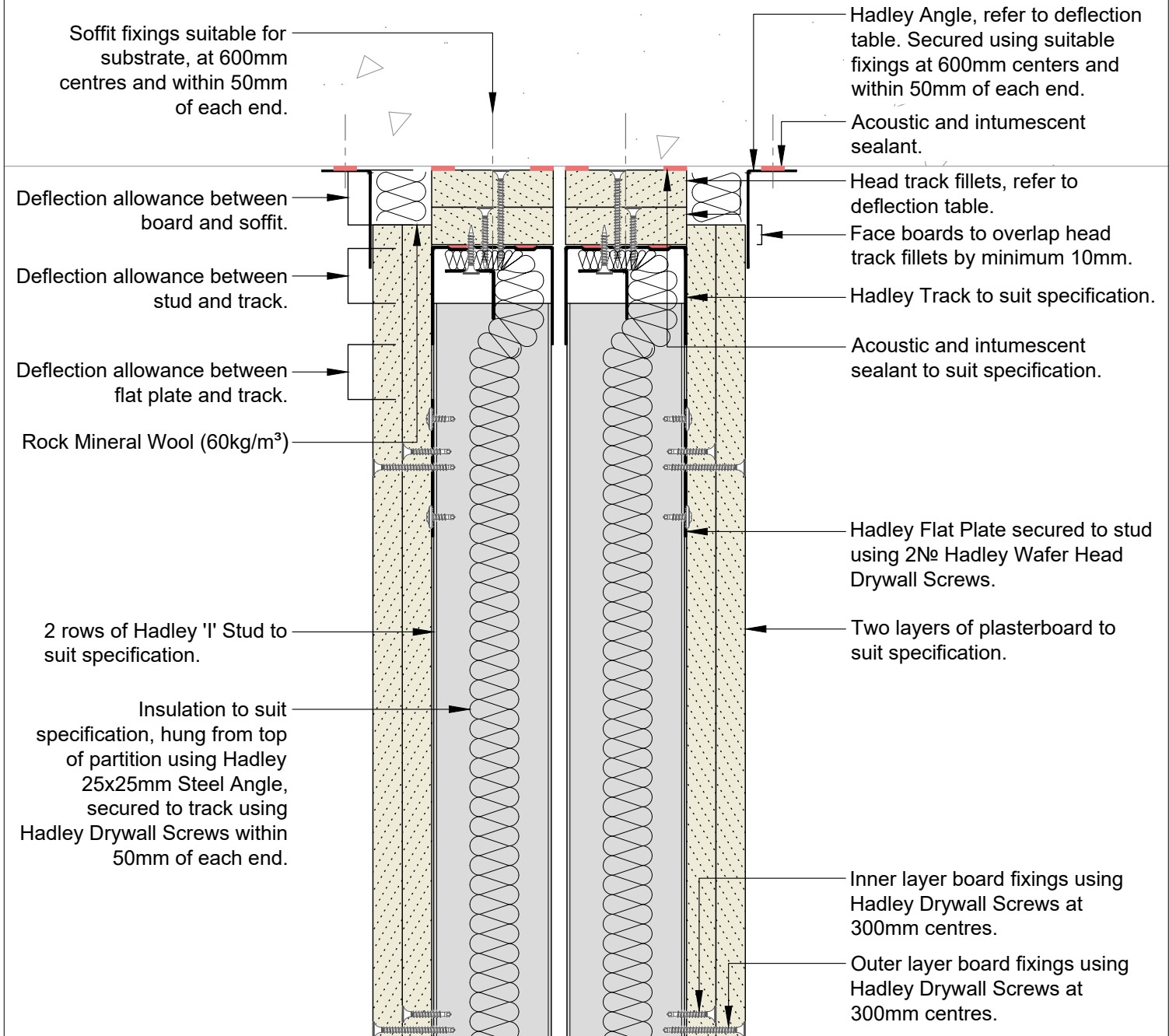
Title:
Hadley Duo
Partition - Twin Frame IWL
Deflection Head up to 60 min EI Fire Resistance

Scale:	Date:	Drawn:	Checked:	Dwg No:	Revision:
1:3 @ A4	Jul 21	FM	JS	HD-DUO-04	00

All performance data and system specifications are for systems constructed with materials & components as shown. The inclusion or substitution of any other manufacturers materials or components could invalidate test data and system performance. The information is provided in good faith and is based upon details received which are assumed to include all relevant facts. No duty of care is owed to the recipient or any other third party and Hadley Industries PLC cannot accept liability in respect of the details shown. None of the content may be distributed or copied directly without prior approval.

Min. Deflection to suit structural engineer design	Min. Head Track Fillet(s)	Hadley Track Flange	Min. Hadley Angle
5mm	1x15mm Type F Plasterboard	50mm	19x19mm
9mm	1x19mm CoreBoard	50mm	19x19mm
15mm	2x12.5mm Type F Plasterboard	50mm	25x25mm
20mm	2x15mm Type F Plasterboard	50mm	25x50mm
28mm	2x19mm CoreBoard	50mm	25x50mm
35mm	3x15mm Type F Plasterboard	70mm	25x50mm

Board Thickness	Fixing Length
≤15mm	25mm
12.5mm + 12.5mm	25mm + 38mm
12.5mm + 15mm	25mm + 38mm
15mm + 15mm	25mm + 42mm



00 JUL21 First Issue FM JS JS System details to be read in conjunction with Hadley Group project specification pack. All applications to be built in accordance with British Standards, Building Regulations and Hadley Group tested solutions.



Hadley Group, Downing Street,
Smethwick, West Midlands B66 2PA
Tel: +44 (0) 121 555 1329
E-mail: drylining.technical@hadleygroup.co.uk

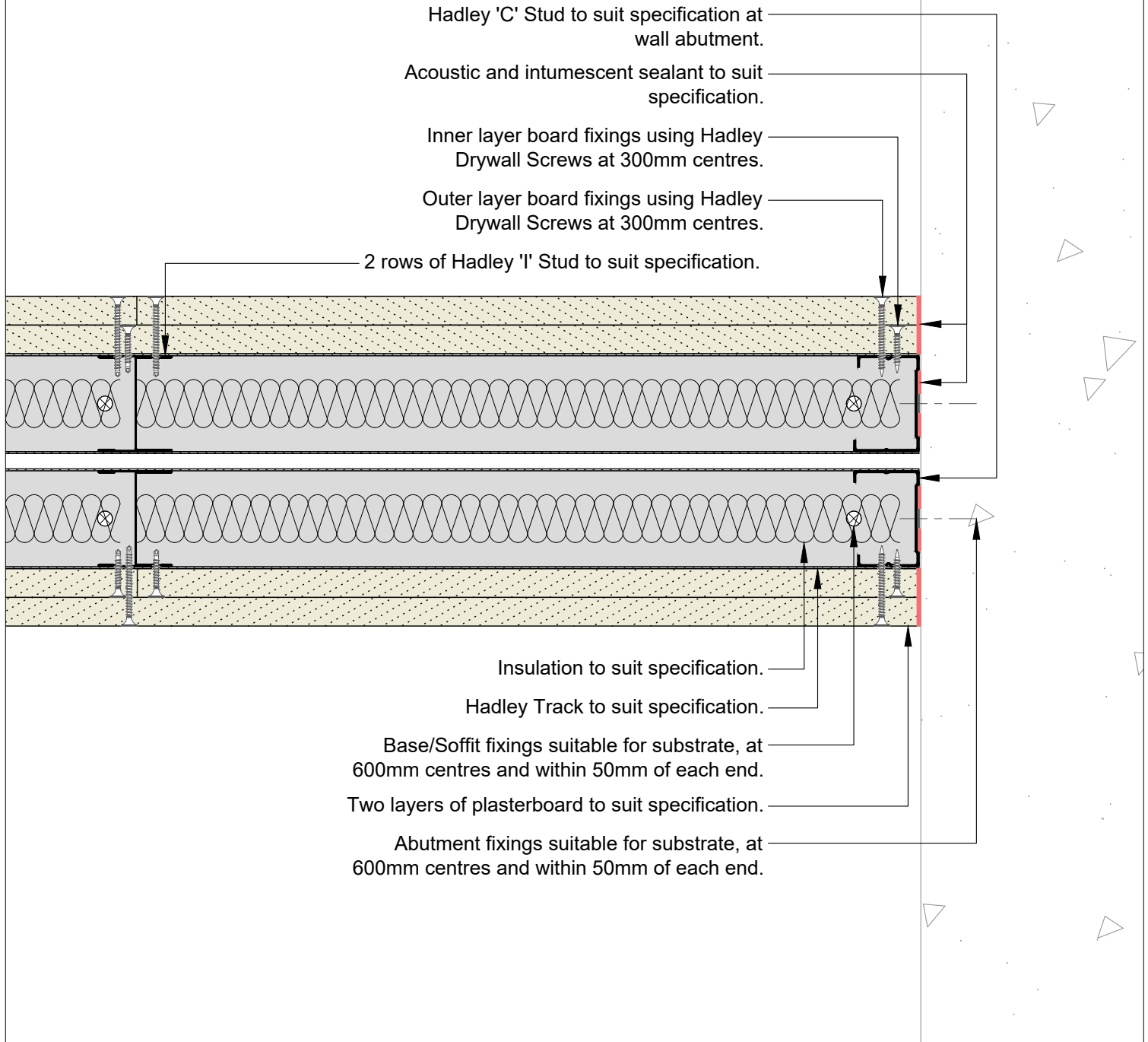
Project:
Typical System Detail
See project specification for exact requirements

Title:
Hadley Duo
Partition - Twin Frame IWL
Deflection Head up to 120 min (EI)

Scale:	Date:	Drawn:	Checked:	Dwg No:	Revision:
1:3 @ A4	Jul 21	FM	JS	HD-DUO-05	00

All performance data and system specifications are for systems constructed with materials & components as shown. The inclusion or substitution of any other manufacturers materials or components could invalidate test data and system performance. The information is provided in good faith and is based upon details received which are assumed to include all relevant facts. No duty of care is owed to the recipient or any other third party and Hadley Industries PLC cannot accept liability in respect of the details shown. None of the content may be distributed or copied directly without prior approval.

Board Thickness	Fixing Length
≤15mm	25mm
12.5mm + 12.5mm	25mm + 38mm
12.5mm + 15mm	25mm + 38mm
15mm + 15mm	25mm + 42mm



00 JUL21 First Issue FM JS JS System details to be read in conjunction with Hadley Group project specification pack. All applications to be built in accordance with British Standards, Building Regulations and Hadley Group tested solutions.

Rev: Date: Reason for Issue: Drn: Chk: App:



Hadley Group, Downing Street,
Smethwick, West Midlands B66 2PA
Tel: +44 (0) 121 555 1329
E-mail: drylining.technical@hadleygroup.co.uk

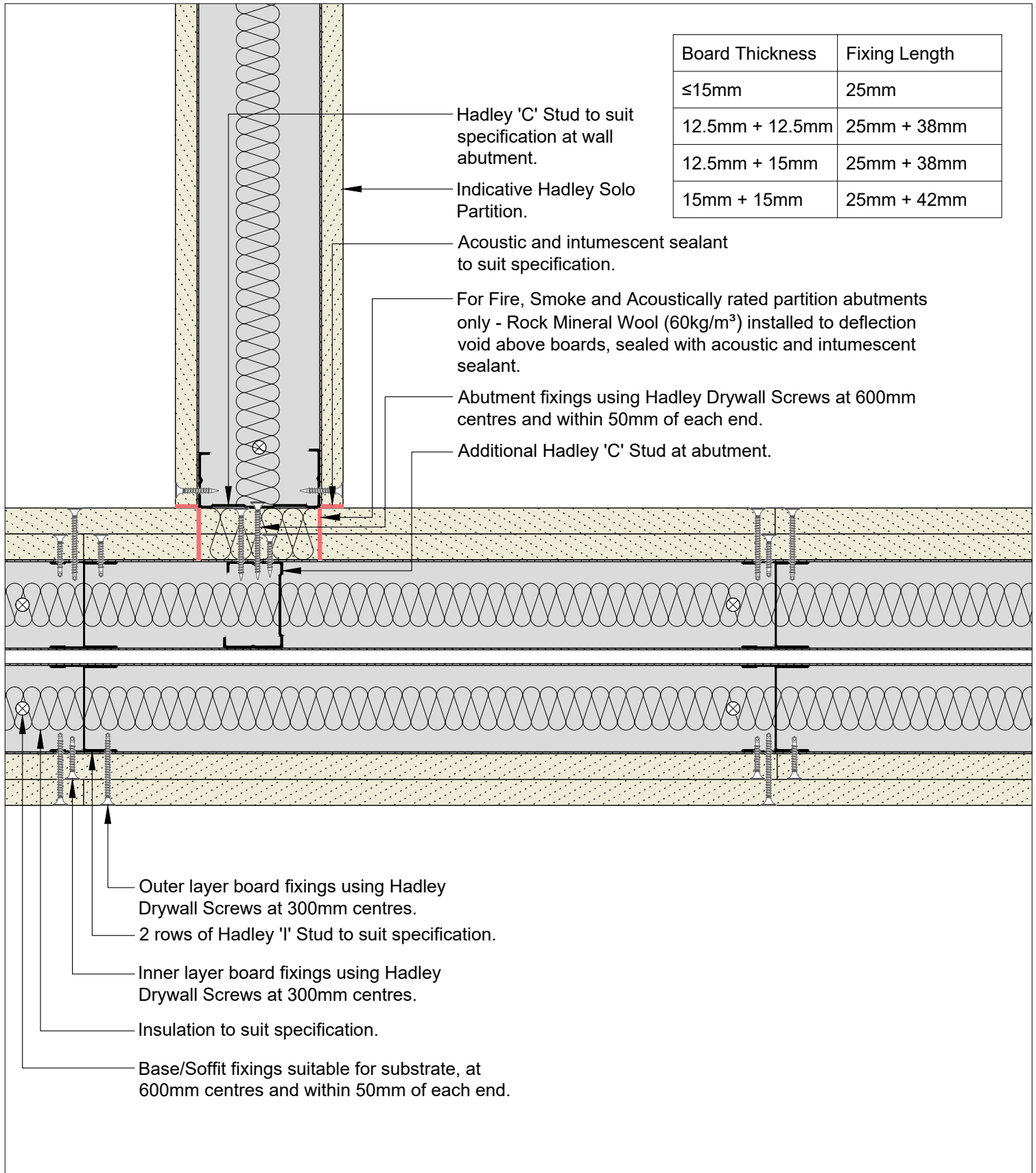
Project:
Typical System Detail
 See project specification for exact requirements

Title:
Hadley Duo
 Partition - Twin Frame IWL
 Abutment to Concrete/Blockwork

Scale: 1:3 @ A4	Date: Jul 21	Drawn: FM	Checked: JS	Dwg No: HD-DUO-06	Revision: 00
--------------------	-----------------	--------------	----------------	----------------------	-----------------

All performance data and system specifications are for systems constructed with materials & components as shown. The inclusion or substitution of any other manufacturers materials or components could invalidate test data and system performance. The information is provided in good faith and is based upon details received which are assumed to include all relevant facts. No duty of care is owed to the recipient or any other third party and Hadley Industries PLC cannot accept liability in respect of the details shown. None of the content may be distributed or copied directly without prior approval.

© 2021 Hadley Industries Holdings Limited



00	JUL21	First Issue	FM	JS	JS	System details to be read in conjunction with Hadley Group project specification pack. All applications to be built in accordance with British Standards, Building Regulations and Hadley Group tested solutions.
Rev:	Date:	Reason for Issue:	Drn:	Chk:	App:	



Hadley Group, Downing Street,
Smethwick, West Midlands B66 2PA
Tel: +44 (0) 121 555 1329
E-mail: drylining.technical@hadleygroup.co.uk

Project: Typical System Detail See project specification for exact requirements						
Title: Hadley Duo Partition - Twin Frame IWL Abutment to Drylining Partition						
Scale: 1:3 @ A4	Date: Jul 21	Drawn: FM	Checked: JS	Dwg No: HD-DUO-07	Revision: 00	

All performance data and system specifications are for systems constructed with materials & components as shown. The inclusion or substitution of any other manufacturers materials or components could invalidate test data and system performance. The information is provided in good faith and is based upon details received which are assumed to include all relevant facts. No duty of care is owed to the recipient or any other third party and Hadley Industries PLC cannot accept liability in respect of the details shown. None of the content may be distributed or copied directly without prior approval.
© 2021 Hadley Industries Holdings Limited

Board Thickness	Fixing Length
≤15mm	25mm
12.5mm + 12.5mm	25mm + 38mm
12.5mm + 15mm	25mm + 38mm
15mm + 15mm	25mm + 42mm

2 rows of Hadley 'I' Stud to suit specification.

Where abutting system is not of equal performance, fill the gap between vertical boards with acoustic and intumescent mastic, subject to confirmation from project acoustic and fire consultants.

Rock Mineral Wool (60kg/m³) installed to deflection void above boards, sealed with acoustic and intumescent sealant.

Abutment fixings using Hadley Drywall Screws at 600mm centres and within 50mm of each end.

Hadley C Stud to suit specification at wall abutment.

Insulation to suit specification.

Hadley Track to suit specification.

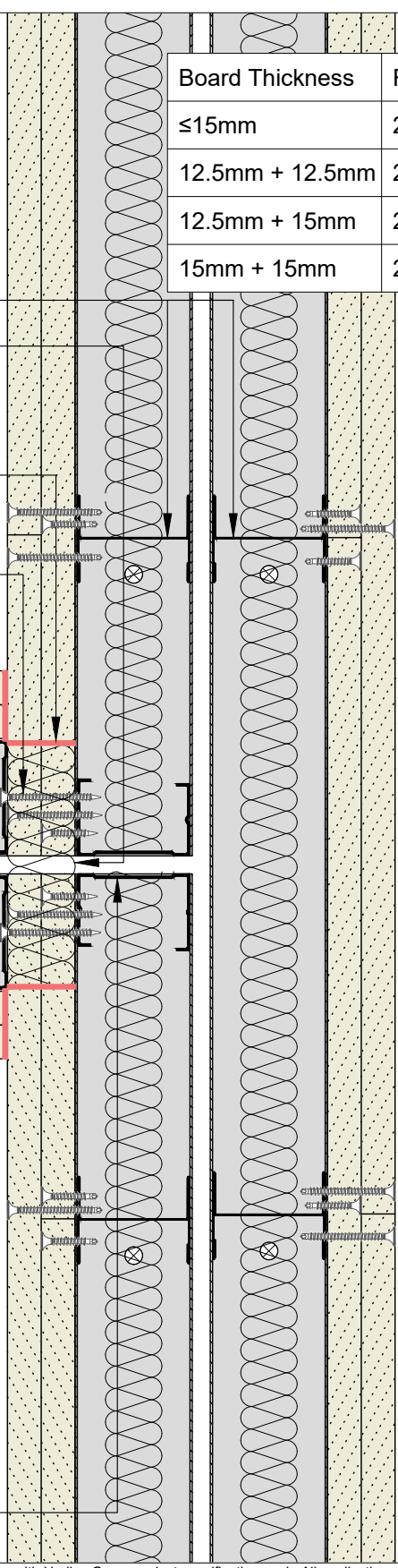
Two layers of plasterboard to suit specification.

Base/Soffit fixings suitable for substrate, at 600mm centres and within 50mm of each end.

Outer layer board fixings using Hadley Drywall Screws at 300mm centres.

Inner layer board fixings using Hadley Drywall Screws at 300mm centres.

Additional Hadley 'C' Stud at abutment.



00 JUL21 First Issue FM JS JS System details to be read in conjunction with Hadley Group project specification pack. All applications to be built in accordance with British Standards, Building Regulations and Hadley Group tested solutions.



Hadley Group, Downing Street,
Smethwick, West Midlands B66 2PA

Tel: +44 (0) 121 555 1329

E-mail: drylining.technical@hadleygroup.co.uk

Project: Typical System Detail
See project specification for exact requirements

Title: **Hadley Duo**
Partition - Twin Frame IWL
Abutment to Drylining Twin Frame

Scale: 1:3 @ A4	Date: Jul 21	Drawn: FM	Checked: JS	Dwg No: HD-DUO-08	Revision: 00
-----------------	--------------	-----------	-------------	-------------------	--------------

All performance data and system specifications are for systems constructed with materials & components as shown. The inclusion or substitution of any other manufacturers materials or components could invalidate test data and system performance. The information is provided in good faith and is based upon details received which are assumed to include all relevant facts. No duty of care is owed to the recipient or any other third party and Hadley Industries PLC cannot accept liability in respect of the details shown. None of the content may be distributed or copied directly without prior approval.

© 2021 Hadley Industries Holdings Limited

Board Thickness	Fixing Length
≤15mm	25mm
12.5mm + 12.5mm	25mm + 38mm
12.5mm + 15mm	25mm + 38mm
15mm + 15mm	25mm + 42mm

Insulation to suit specification.

Hadley Internal Fixing Angle secured to each stud using Hadley Drywall Screws at 600mm centres and within 50mm of each stud end.

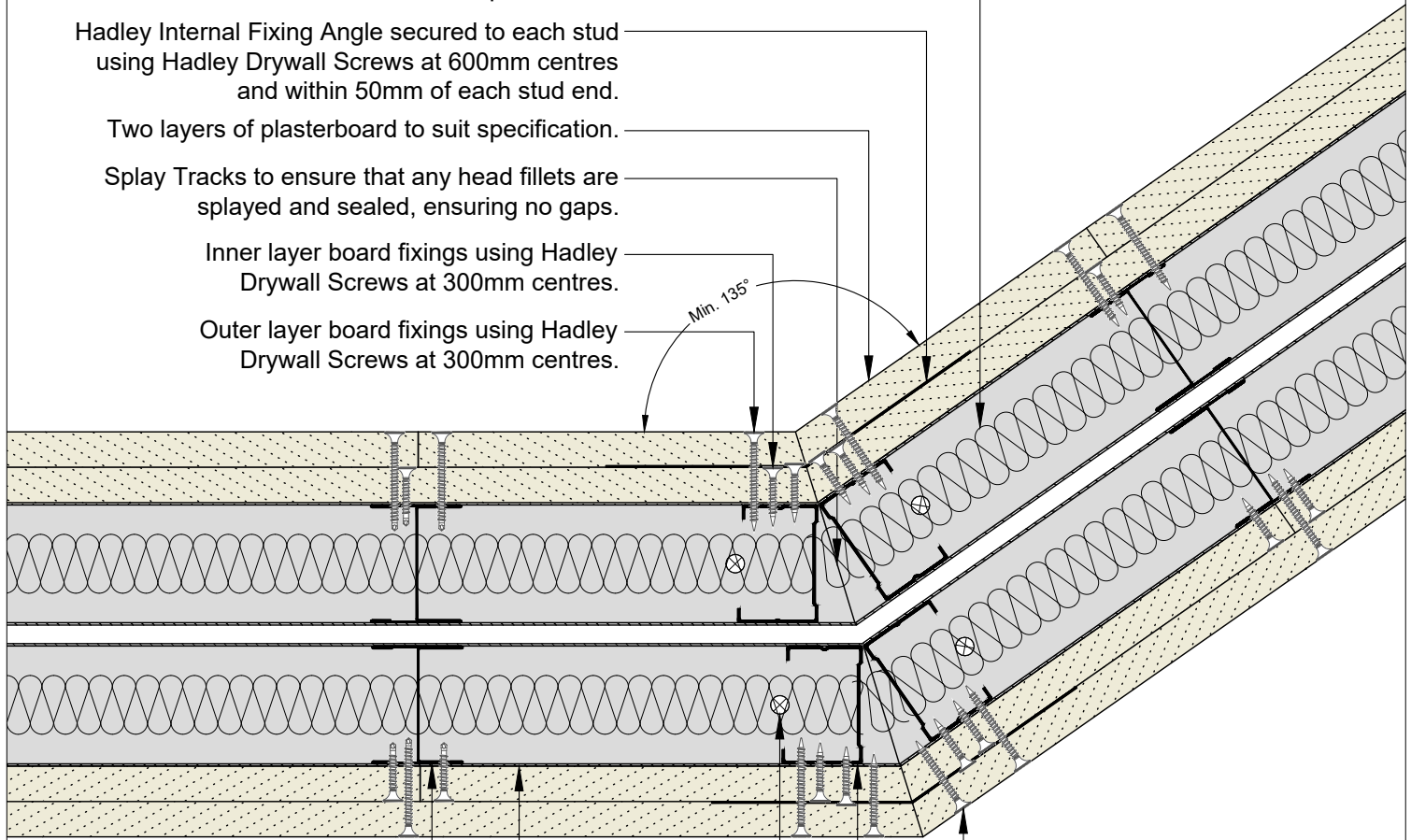
Two layers of plasterboard to suit specification.

Splay Tracks to ensure that any head fillets are splayed and sealed, ensuring no gaps.

Inner layer board fixings using Hadley Drywall Screws at 300mm centres.

Outer layer board fixings using Hadley Drywall Screws at 300mm centres.

Min. 135°



2 rows of Hadley 'I' Stud to suit specification.

Hadley Track to suit specification.

Base/Soffit fixings suitable for substrate, at 600mm centres and within 50mm of each end.

Hadley 'C' Stud on corner.

Corner board fixings using Hadley Drywall Screws at 200mm centres.

00	JUL21	First Issue	FM	JS	JS	System details to be read in conjunction with Hadley Group project specification pack. All applications to be built in accordance with British Standards, Building Regulations and Hadley Group tested solutions.
Rev:	Date:	Reason for Issue:	Drn:	Chk:	App:	



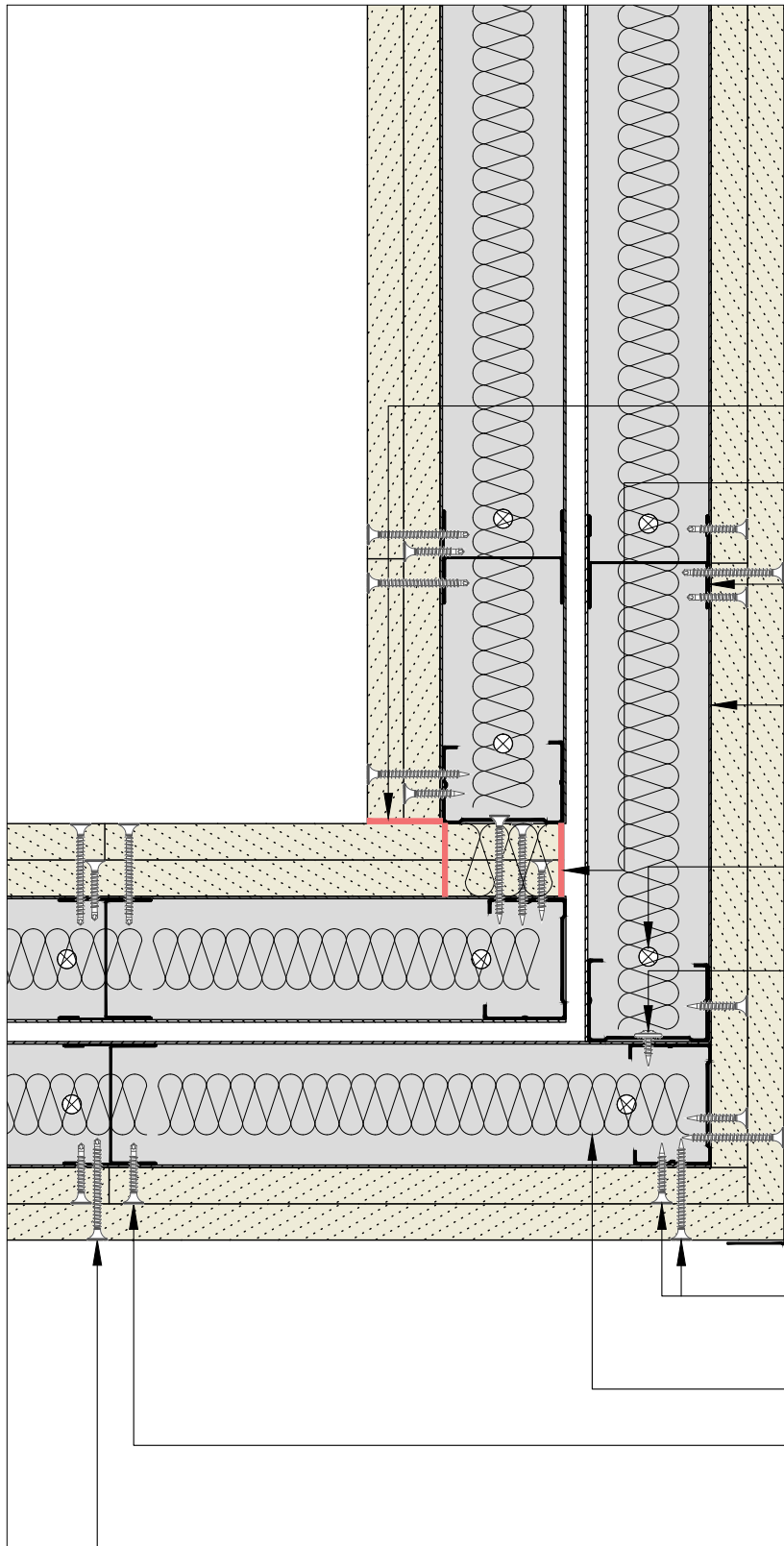
Hadley Group, Downing Street,
Smethwick, West Midlands B66 2PA
Tel: +44 (0) 121 555 1329
E-mail: drylining.technical@hadleygroup.co.uk

Project:
Typical System Detail
See project specification for exact requirements

Title:
Hadley Duo
Partition - Twin Frame IWL
Splayed Corner

Scale:	Date:	Drawn:	Checked:	Dwg No:	Revision:
1:3 @ A4	Jul 21	FM	JS	HD-DUO-09	00

All performance data and system specifications are for systems constructed with materials & components as shown. The inclusion or substitution of any other manufacturers materials or components could invalidate test data and system performance. The information is provided in good faith and is based upon details received which are assumed to include all relevant facts. No duty of care is owed to the recipient or any other third party and Hadley Industries PLC cannot accept liability in respect of the details shown. None of the content may be distributed or copied directly without prior approval.
© 2021 Hadley Industries Holdings Limited



Board Thickness	Fixing Length
≤15mm	25mm
12.5mm + 12.5mm	25mm + 38mm
12.5mm + 15mm	25mm + 38mm
15mm + 15mm	25mm + 42mm

- Acoustic and intumescent sealant to suit specification.
- Rock Mineral Wool (60kg/m³) installed to deflection void above boards, sealed with acoustic and intumescent sealant.
- 2 rows of Hadley 'I' Stud to suit specification.
- Two layers of plasterboard to suit specification.
- Hadley Track to suit specification.
- Base/Soffit fixings suitable for substrate, at 600mm centres and within 50mm of each end.
- Abutment fixings using Hadley Wafer Head Drywall Screws at 600mm centres and within 50mm of each end.
- Hadley Corner Bead.
- Corner board fixings using Hadley Drywall Screws at 200mm centres.
- Insulation to suit specification.
- Inner layer board fixings using Hadley Drywall Screws at 300mm centres.
- Outer layer board fixings using Hadley Drywall Screws at 300mm centres.

00	JUL21	First Issue	FM	JS	JS	System details to be read in conjunction with Hadley Group project specification pack. All applications to be built in accordance with British Standards, Building Regulations and Hadley Group tested solutions.
Rev:	Date:	Reason for Issue:	Drn:	Chk:	App:	



Hadley Group, Downing Street,
Smethwick, West Midlands B66 2PA
Tel: +44 (0) 121 555 1329
E-mail: drylining.technical@hadleygroup.co.uk

Project: Typical System Detail See project specification for exact requirements						
Title: Hadley Duo Partition - Twin Frame IWL 90° Corner						
Scale:	Date:	Drawn:	Checked:	Dwg No:	Revision:	
1:3 @ A4	Jul 21	FM	JS	HD-DUO-10	00	

All performance data and system specifications are for systems constructed with materials & components as shown. The inclusion or substitution of any other manufacturers materials or components could invalidate test data and system performance. The information is provided in good faith and is based upon details received which are assumed to include all relevant facts. No duty of care is owed to the recipient or any other third party and Hadley Industries PLC cannot accept liability in respect of the details shown. None of the content may be distributed or copied directly without prior approval.

Stud and track depths and gauge to suit specification.
Fixing type to suit metalwork gauge.

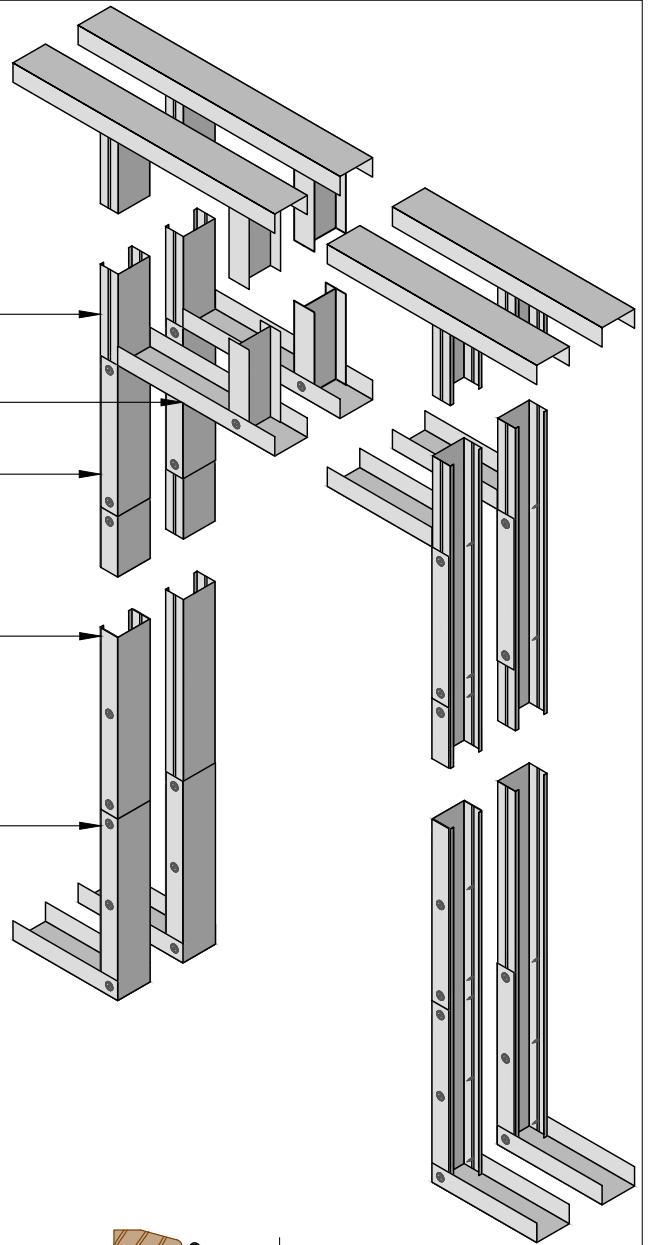
Avoid outer board joint located on the door jamb.

Hadley Track to suit specification.
Lintel detail to suit opening width.

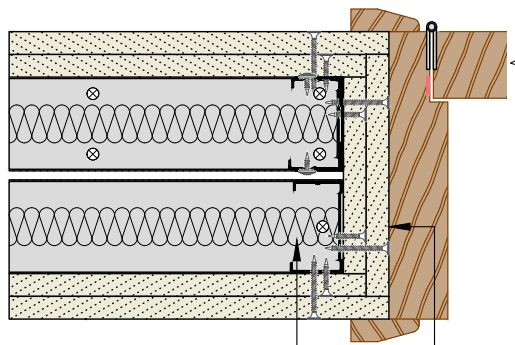
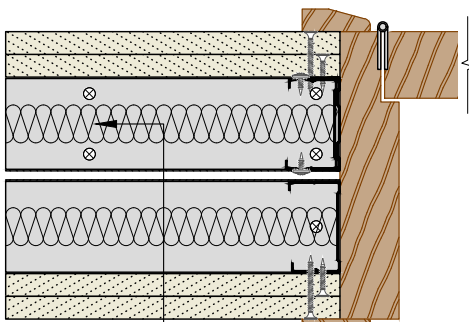
Hadley Track cut and bent to extend
250mm down stud, fixed through
both flanges using 2№ Hadley Wafer
Head Drywall Screws each side.

Hadley Track sleeved over stud
between returned channels at opening
head & base, fixed through both flanges
using Hadley Wafer Head Drywall
Screws at 300mm centres and within
50mm of each end for each side.

Hadley Track cut and bent to extend
vertically 300mm, fixed through both
flanges using 3№ Hadley Wafer Head
Drywall Screws each side.



Plan View



Indicative door frame and
architraves by others.
Base track fixed with pairs of
suitable fixings 150mm apart.

For fire rated openings, apply
plasterboard as per face board
specification to the reveals.
Timber fillets, omitted for clarity, within door
jamb to suit door manufacturers application
requirements and tested solution.

00	JUL21	First Issue	FM	JS	JS	System details to be read in conjunction with Hadley Group project specification pack. All applications to be built in accordance with British Standards, Building Regulations and Hadley Group tested solutions.
Rev:	Date:	Reason for Issue:	Drn:	Chk:	App:	



Hadley Group, Downing Street,
Smethwick, West Midlands B66 2PA
Tel: +44 (0) 121 555 1329
E-mail: drylining.technical@hadleygroup.co.uk

Project:
Typical System Detail
See project specification for exact requirements

Title:
Hadley Duo
Partition - Twin Frame IWL
Doorway 0-60 kg

Scale:	Date: Jul 21	Drawn: FM	Checked: JS	Dwg No: HD-DUO-11	Revision: 00
--------	-----------------	--------------	----------------	-----------------------------	------------------------

All performance data and system specifications are for systems constructed with materials & components as shown. The inclusion or substitution of any other manufacturers materials or components could invalidate test data and system performance. The information is provided in good faith and is based upon details received which are assumed to include all relevant facts. No duty of care is owed to the recipient or any other third party and Hadley Industries PLC cannot accept liability in respect of the details shown. None of the content may be distributed or copied directly without prior approval.



HADLEY TECHNICAL SUPPORT

☎ +44 (0) 121 555 1329

✉ drylining.technical@hadleygroup.com



HADLEY TECHNICAL SUPPORT

☎ +44 (0) 121 555 1329

✉ drylining.technical@hadleygroup.com