



Hadley Drylining Standard Details

HadleyBrace – Double Layer
2022 Version 1

HADLEY DRYLINING SALES

☎ +44 (0) 121 555 1300
✉ dryliningsales@hadleygroup.com

HADLEY TECHNICAL SUPPORT

☎ +44 (0) 121 555 1329
✉ drylining.technical@hadleygroup.com



Hadley Drylining Standard Details

HadleyBrace – Single Layer
2022 Version 1

HADLEY DRYLINING SALES

☎ +44 (0) 121 555 1300
✉ dryliningsales@hadleygroup.com

HADLEY TECHNICAL SUPPORT

☎ +44 (0) 121 555 1329
✉ drylining.technical@hadleygroup.com

Board Thickness	Fixing Length
≤15mm	25mm
12.5mm + 12.5mm	25mm + 38mm
12.5mm + 15mm	25mm + 38mm
15mm + 15mm	25mm + 42mm

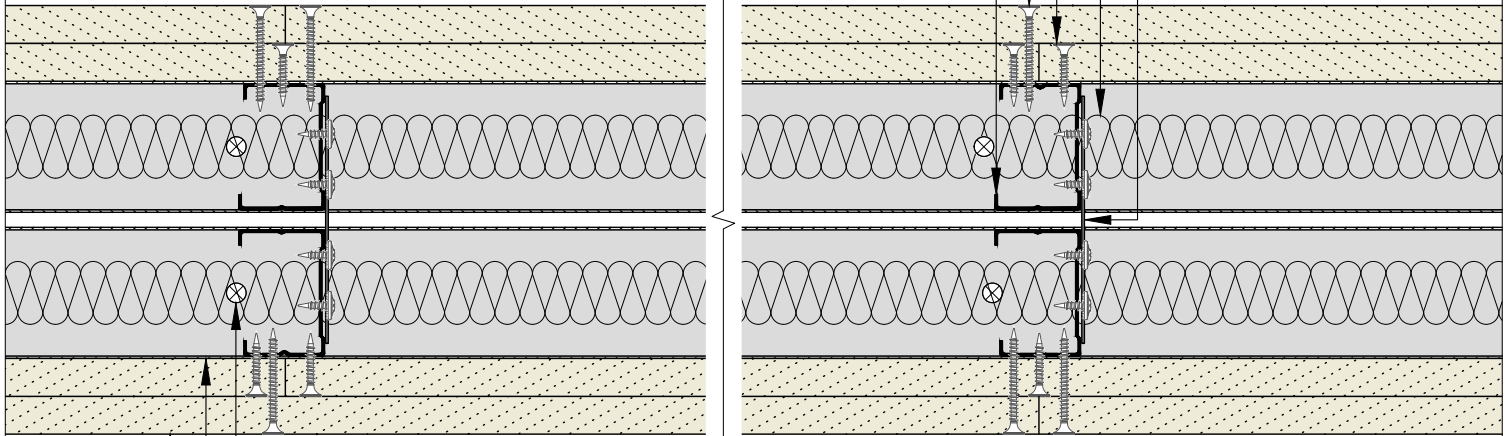
Hadley Brace at 1200mm vertical centres fixed to each stud using 2N^o Hadley Wafer Head Drywall Screws to each stud.

Insulation to suit specification.

Inner layer board fixings using Hadley Drywall Screws at 300mm centres.

Outer layer board fixings using Hadley Drywall Screws at 300mm centres.

2 rows of Hadley 'C' Stud to suit specification.



Base/Soffit fixings suitable for substrate, at 600mm centres and within 50mm of each end.

Hadley Track to suit specification.

Two layers of plasterboard to suit specification.

00	JUL21	First Issue	FM	JS	JS	System details to be read in conjunction with Hadley Group project specification pack. All applications to be built in accordance with British Standards, Building Regulations and Hadley Group tested solutions.
Rev:	Date:	Reason for Issue:	Drn:	Chk:	App:	



Hadley Group, Downing Street,
Smethwick, West Midlands B66 2PA

Tel: +44 (0) 121 555 1329

E-mail: drylining.technical@hadleygroup.co.uk

Project:

Typical System Detail
See project specification for exact requirements

Title:

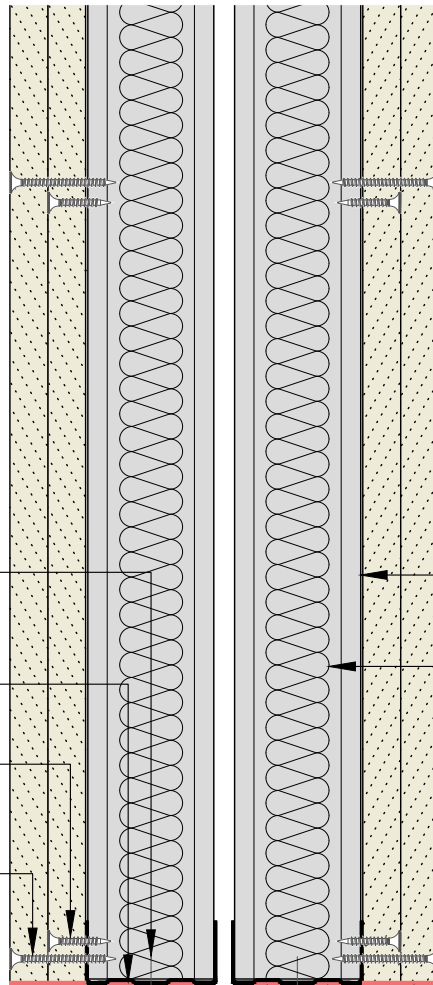
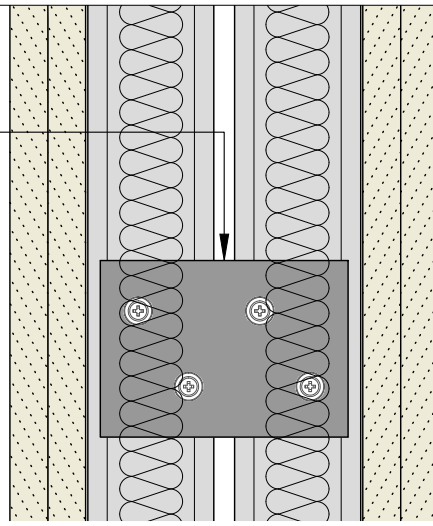
Hadley Brace
Partition - Twin Frame Braced
Plan

Scale:	Date:	Drawn:	Checked:	Dwg No:	Revision:
1:3 @ A4	Jul 21	FM	JS	HD-BRACE-01	00

All performance data and system specifications are for systems constructed with materials & components as shown. The inclusion or substitution of any other manufacturers materials or components could invalidate test data and system performance. The information is provided in good faith and is based upon details received which are assumed to include all relevant facts. No duty of care is owed to the recipient or any other third party and Hadley Industries PLC cannot accept liability in respect of the details shown. None of the content may be distributed or copied directly without prior approval.

Hadley Brace at 1200mm vertical centres fixed to each stud using 2No Hadley Wafer Head Drywall Screws to each stud.

Board Thickness	Fixing Length
≤15mm	25mm
12.5mm + 12.5mm	25mm + 38mm
12.5mm + 15mm	25mm + 38mm
15mm + 15mm	25mm + 42mm



Base fixings suitable for substrate, at 600mm centres and within 50mm of each end.

Hadley Track to suit specification.

Inner layer board fixings using Hadley Drywall Screws at 300mm centres.

Outer layer board fixings using Hadley Drywall Screws at 300mm centres.

2 rows of Hadley 'C' Stud to suit specification.

Insulation to suit specification.

Two layers of plasterboard to suit specification.

Acoustic and intumescent sealant to suit specification.

00	JUL21	First Issue	FM	JS	JS	System details to be read in conjunction with Hadley Group project specification pack. All applications to be built in accordance with British Standards, Building Regulations and Hadley Group tested solutions.
Rev:	Date:	Reason for Issue:	Drn:	Chk:	App:	



Hadley Group, Downing Street,
Smethwick, West Midlands B66 2PA

Tel: +44 (0) 121 555 1329

E-mail: drylining.technical@hadleygroup.co.uk

Project: Typical System Detail

See project specification for exact requirements

Title:
Hadley Brace
Partition - Twin Frame Braced
Base

Scale:	Date:	Drawn:	Checked:	Dwg No:	Revision:
1:3 @ A4	Jul 21	FM	JS	HD-BRACE-02	00

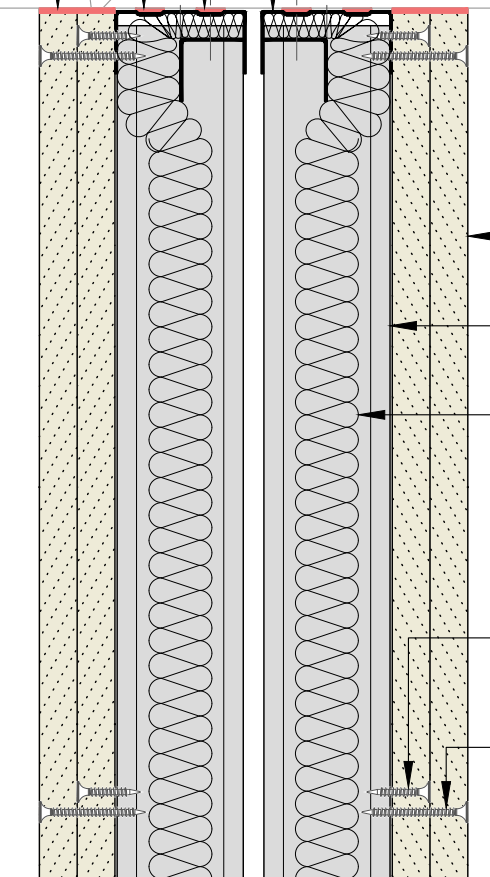
All performance data and system specifications are for systems constructed with materials & components as shown. The inclusion or substitution of any other manufacturers materials or components could invalidate test data and system performance. The information is provided in good faith and is based upon details received which are assumed to include all relevant facts. No duty of care is owed to the recipient or any other third party and Hadley Industries PLC cannot accept liability in respect of the details shown. None of the content may be distributed or copied directly without prior approval.

Soffit fixings suitable for substrate, at 600mm centres and within 50mm of each end.

Hadley Track to suit specification.

Acoustic and intumescent sealant to suit specification.

Board Thickness	Fixing Length
≤15mm	25mm
12.5mm + 12.5mm	25mm + 38mm
12.5mm + 15mm	25mm + 38mm
15mm + 15mm	25mm + 42mm



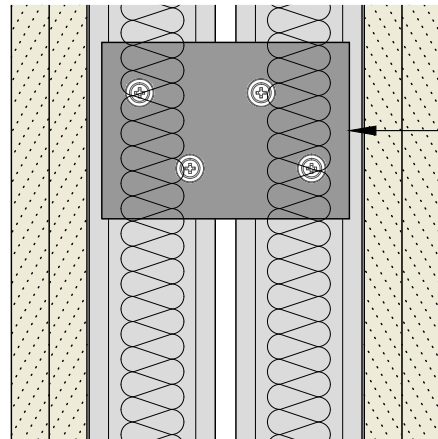
Two layers of plasterboard to suit specification.

2 rows of Hadley 'C' Stud to suit specification.

Insulation to suit specification, hung from top of partition using Hadley 25x25mm Steel Angle, secured through to soffit using suitable fixings within 50mm of each end.

Inner layer board fixings using Hadley Drywall Screws at 300mm centres.

Outer layer board fixings using Hadley Drywall Screws at 300mm centres.



Hadley Brace at 1200mm vertical centres fixed to each Stud using 2No Hadley Wafer Head Drywall Screws to each stud.

00 JUL21 First Issue FM JS JS System details to be read in conjunction with Hadley Group project specification pack. All applications to be built in accordance with British Standards, Building Regulations and Hadley Group tested solutions.

Rev: Date: Reason for Issue: Drn: Chk: App: Project:



Hadley Group, Downing Street,
Smethwick, West Midlands B66 2PA
Tel: +44 (0) 121 555 1329
E-mail: drylining.technical@hadleygroup.co.uk

Typical System Detail
See project specification for exact requirements

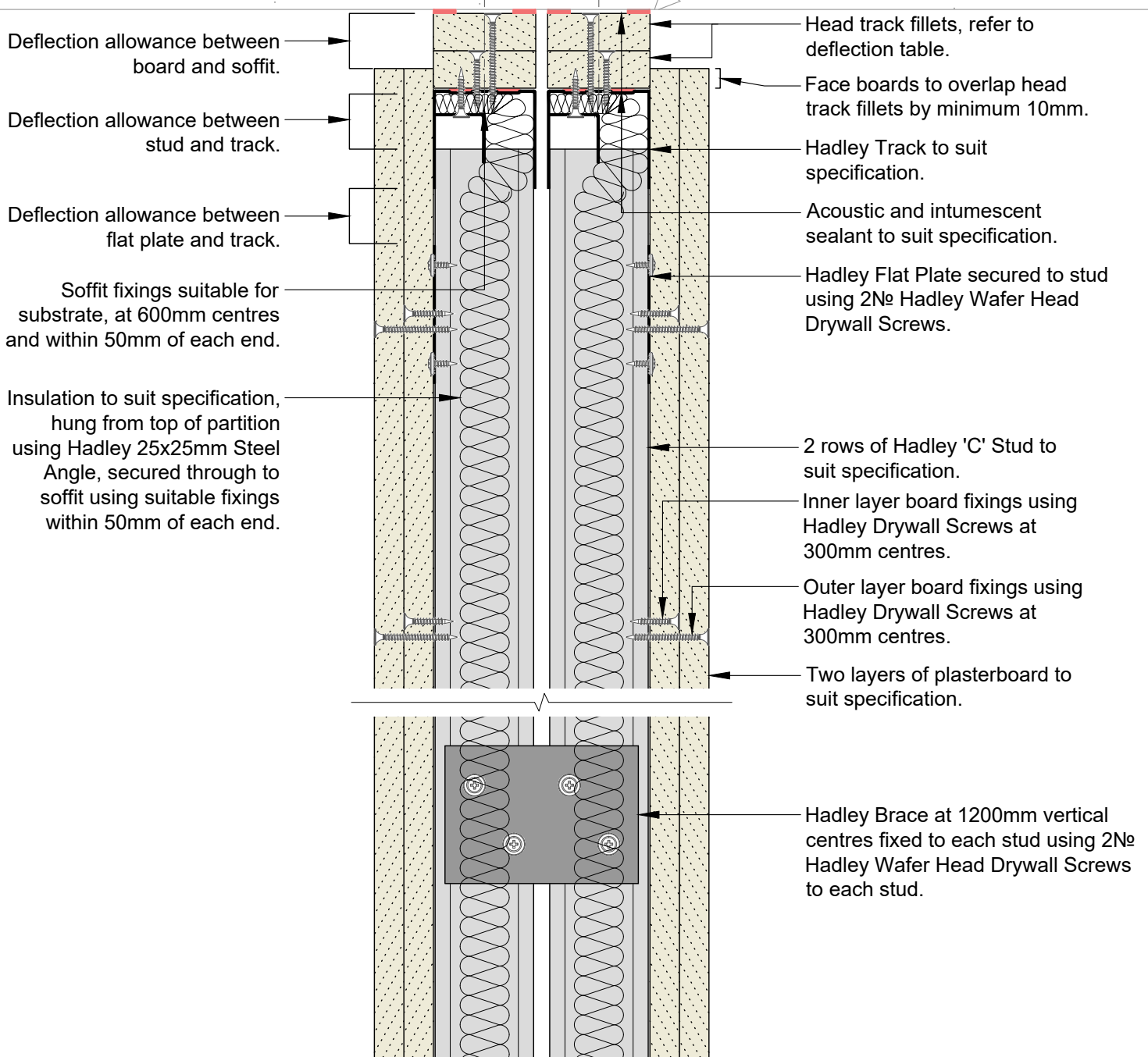
Title:
Hadley Brace
Partition - Twin Frame Braced
Fixed Head

Scale: 1:3 @ A4	Date: Jul 21	Drawn: FM	Checked: JS	Dwg No: HD-BRACE-03	Revision: 00
--------------------	-----------------	--------------	----------------	-------------------------------	------------------------

All performance data and system specifications are for systems constructed with materials & components as shown. The inclusion or substitution of any other manufacturers materials or components could invalidate test data and system performance. The information is provided in good faith and is based upon details received which are assumed to include all relevant facts. No duty of care is owed to the recipient or any other third party and Hadley Industries PLC cannot accept liability in respect of the details shown. None of the content may be distributed or copied directly without prior approval.

Min. Deflection to suit structural engineer design	Min. Head Track Fillet(s)	Hadley Track Flange
5mm	1x15mm Type F Plasterboard	50mm
9mm	1x19mm CoreBoard	50mm
15mm	2x12.5mm Type F Plasterboard	50mm
20mm	2x15mm Type F Plasterboard	50mm
28mm	2x19mm CoreBoard	50mm
35mm	3x15mm Type F Plasterboard	70mm

Board Thickness	Fixing Length
≤15mm	25mm
12.5mm + 12.5mm	25mm + 38mm
12.5mm + 15mm	25mm + 38mm
15mm + 15mm	25mm + 42mm



00 JUL21 First Issue FM JS JS System details to be read in conjunction with Hadley Group project specification pack. All applications to be built in accordance with British Standards, Building Regulations and Hadley Group tested solutions.

Rev: Date: Reason for Issue: Drn: Chk: App: Project:



Hadley Group, Downing Street,
Smethwick, West Midlands B66 2PA

Tel: +44 (0) 121 555 1329

E-mail: drylining.technical@hadleygroup.co.uk

Typical System Detail
See project specification for exact requirements

Title:
Hadley Brace
Partition - Twin Frame Braced
Deflection Head up to 60 min EI Fire Resistance

Scale:	Date:	Drawn:	Checked:	Dwg No:	Revision:
1:3 @ A4	Jul 21	FM	JS	HD-BRACE-04	00

All performance data and system specifications are for systems constructed with materials & components as shown. The inclusion or substitution of any other manufacturers materials or components could invalidate test data and system performance. The information is provided in good faith and is based upon details received which are assumed to include all relevant facts. No duty of care is owed to the recipient or any other third party and Hadley Industries PLC cannot accept liability in respect of the details shown. None of the content may be distributed or copied directly without prior approval.

Min. Deflection to suit structural engineer design	Min. Head Track Fillet(s)	Hadley Track Flange	Min. Hadley Angle
5mm	1x15mm Type F Plasterboard	50mm	19x19mm
9mm	1x19mm CoreBoard	50mm	19x19mm
15mm	2x12.5mm Type F Plasterboard	50mm	25x25mm
20mm	2x15mm Type F Plasterboard	50mm	25x50mm
28mm	2x19mm CoreBoard	50mm	25x50mm
35mm	3x15mm Type F Plasterboard	70mm	25x50mm

Board Thickness	Fixing Length
≤15mm	25mm
12.5mm + 12.5mm	25mm + 38mm
12.5mm + 15mm	25mm + 38mm
15mm + 15mm	25mm + 42mm

Soffit fixings suitable for substrate, at 600mm centres and within 50mm of each end.

Hadley Angle, refer to deflection table. Secured using suitable fixings at 600mm centers and within 50mm of each end.

Acoustic and intumescent sealant.

Deflection allowance between board and soffit.

Head track fillets, refer to deflection table.

Deflection allowance between stud and track.

Face boards to overlap head track fillets by minimum 10mm.

Deflection allowance between flat plate and track.

Hadley Track to suit specification.

Rock Mineral Wool (60kg/m³)

Acoustic and intumescent sealant to suit specification.

Hadley Flat Plate secured to stud using 2N^o Hadley Wafer Head Drywall Screws.

Insulation to suit specification, hung from top of partition using Hadley 25x25mm Steel Angle, secured to track using Hadley Drywall Screws within 50mm of each end.

2 rows of Hadley 'C' Stud to suit specification.

Inner layer board fixings using Hadley Drywall Screws at 300mm centres.

Outer layer board fixings using Hadley Drywall Screws at 300mm centres.

Two layers of plasterboard to suit specification.

Hadley Brace at 1200mm vertical centres fixed to each stud using 2N^o Hadley Wafer Head Drywall Screws to each stud.

00	JUL21	First Issue	FM	JS	JS
Rev:	Date:	Reason for Issue:	Drn:	Chk:	App:

System details to be read in conjunction with Hadley Group project specification pack. All applications to be built in accordance with British Standards, Building Regulations and Hadley Group tested solutions.

Project:

Typical System Detail
See project specification for exact requirements

Title:

Hadley Brace
Partition - Twin Frame Braced
Deflection Head up to 120 min EI Fire Resistance

Scale:	Date:	Drawn:	Checked:	Dwg No:	Revision:
1:3 @ A4	Jul 21	FM	JS	HD-BRACE-05	00



Hadley Group, Downing Street,
Smethwick, West Midlands B66 2PA
Tel: +44 (0) 121 555 1329
E-mail: drylining.technical@hadleygroup.co.uk

All performance data and system specifications are for systems constructed with materials & components as shown. The inclusion or substitution of any other manufacturers materials or components could invalidate test data and system performance. The information is provided in good faith and is based upon details received which are assumed to include all relevant facts. No duty of care is owed to the recipient or any other third party and Hadley Industries PLC cannot accept liability in respect of the details shown. None of the content may be distributed or copied directly without prior approval.

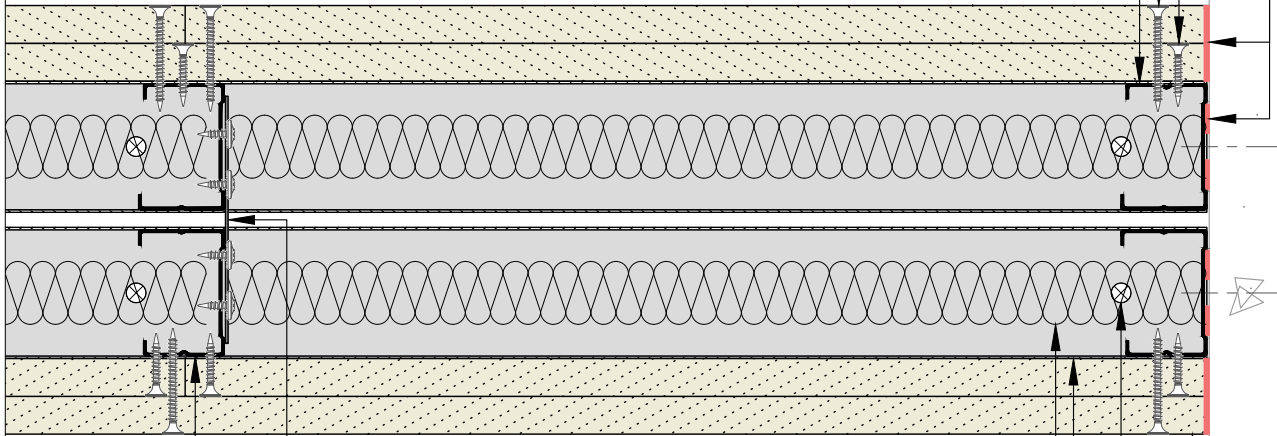
Board Thickness	Fixing Length
≤15mm	25mm
12.5mm + 12.5mm	25mm + 38mm
12.5mm + 15mm	25mm + 38mm
15mm + 15mm	25mm + 42mm

Acoustic and intumescent sealant to suit specification.

Inner layer board fixings using Hadley Drywall Screws at 300mm centres.

Outer layer board fixings using Hadley Drywall Screws at 300mm centres.

Hadley 'C' Stud to suit specification at wall abutment.



Insulation to suit specification.

Hadley Track to suit specification.

Base/Soffit fixings suitable for substrate, at 600mm centres and within 50mm of each end.

Two layers of plasterboard to suit specification.

Abutment fixings suitable for substrate, at 600mm centres and within 50mm of each end.

Hadley Brace at 1200mm vertical centres fixed to each stud using 2N₆ Hadley Wafer Head Drywall Screws to each stud.

2 rows of Hadley 'C' Stud to suit specification.

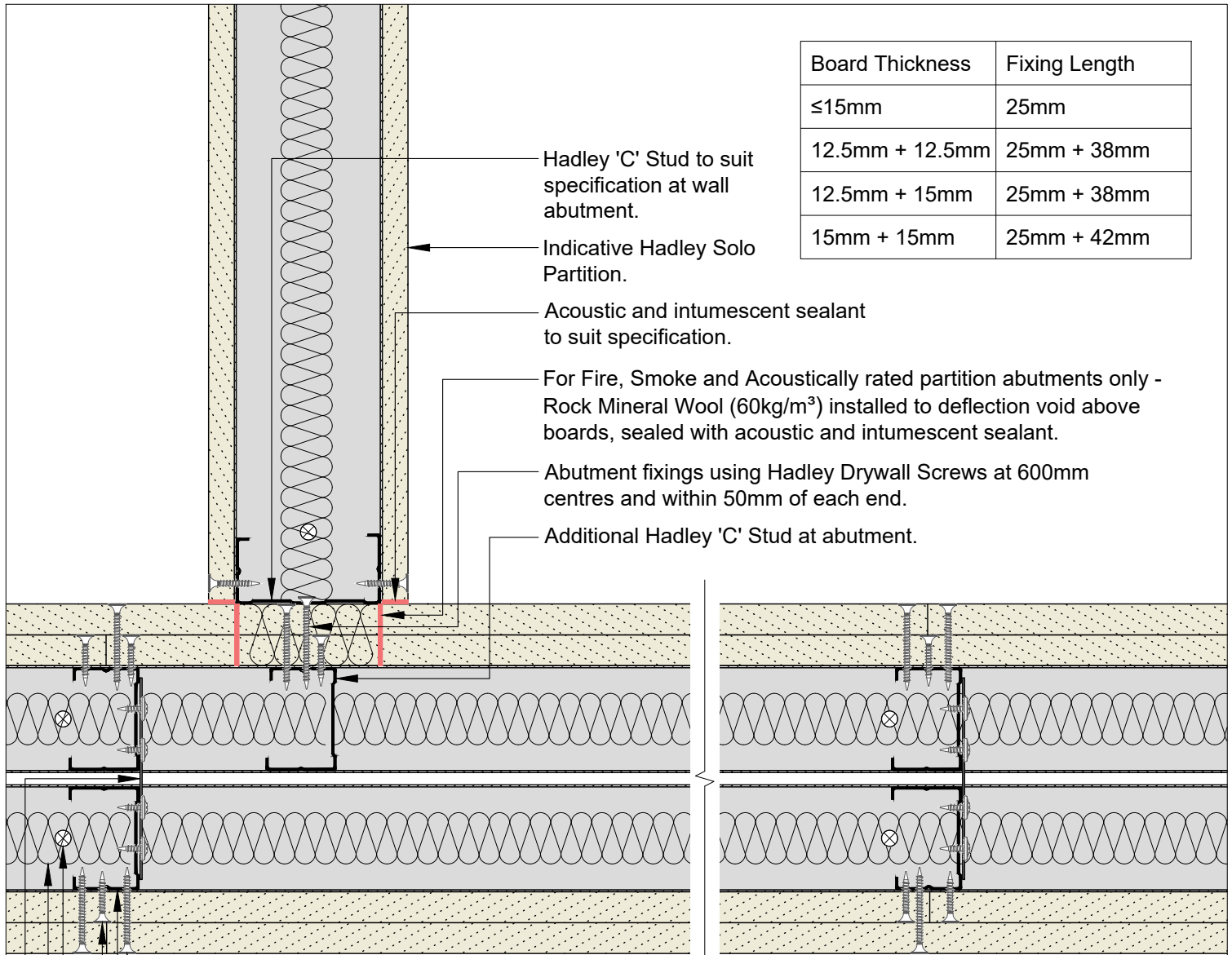
00	JUL21	First Issue	FM	JS	JS	System details to be read in conjunction with Hadley Group project specification pack. All applications to be built in accordance with British Standards, Building Regulations and Hadley Group tested solutions.
Rev:	Date:	Reason for Issue:	Drn:	Chk:	App:	



Hadley Group, Downing Street,
Smethwick, West Midlands B66 2PA
Tel: +44 (0) 121 555 1329
E-mail: drylining.technical@hadleygroup.co.uk

Project: Typical System Detail See project specification for exact requirements						
Title: Hadley Brace Partition - Twin Frame Braced Abutment to Concrete/Blockwork						
Scale:	Date:	Drawn:	Checked:	Dwg No:	Revision:	
1:3 @ A4	Jul 21	FM	JS	HD-BRACE-06	00	

All performance data and system specifications are for systems constructed with materials & components as shown. The inclusion or substitution of any other manufacturers materials or components could invalidate test data and system performance. The information is provided in good faith and is based upon details received which are assumed to include all relevant facts. No duty of care is owed to the recipient or any other third party and Hadley Industries PLC cannot accept liability in respect of the details shown. None of the content may be distributed or copied directly without prior approval.



Hadley 'C' Stud to suit specification at wall abutment.

Indicative Hadley Solo Partition.

Acoustic and intumescent sealant to suit specification.

For Fire, Smoke and Acoustically rated partition abutments only - Rock Mineral Wool (60kg/m³) installed to deflection void above boards, sealed with acoustic and intumescent sealant.

Abutment fixings using Hadley Drywall Screws at 600mm centres and within 50mm of each end.

Additional Hadley 'C' Stud at abutment.

Outer layer board fixings using Hadley Drywall Screws at 300mm centres.

2 rows of Hadley 'C' Stud to suit specification.

Inner layer board fixings using Hadley Drywall Screws at 300mm centres.

Base/Soffit fixings suitable for substrate, at 600mm centres and within 50mm of each end.

Insulation to suit specification.

Hadley Brace at 1200mm vertical centres fixed to each stud using 2N^o Hadley Wafer Head Drywall Screws to each stud.

00	JUL21	First Issue	FM	JS	JS	System details to be read in conjunction with Hadley Group project specification pack. All applications to be built in accordance with British Standards, Building Regulations and Hadley Group tested solutions.
Rev:	Date:	Reason for Issue:	Drn:	Chk:	App:	



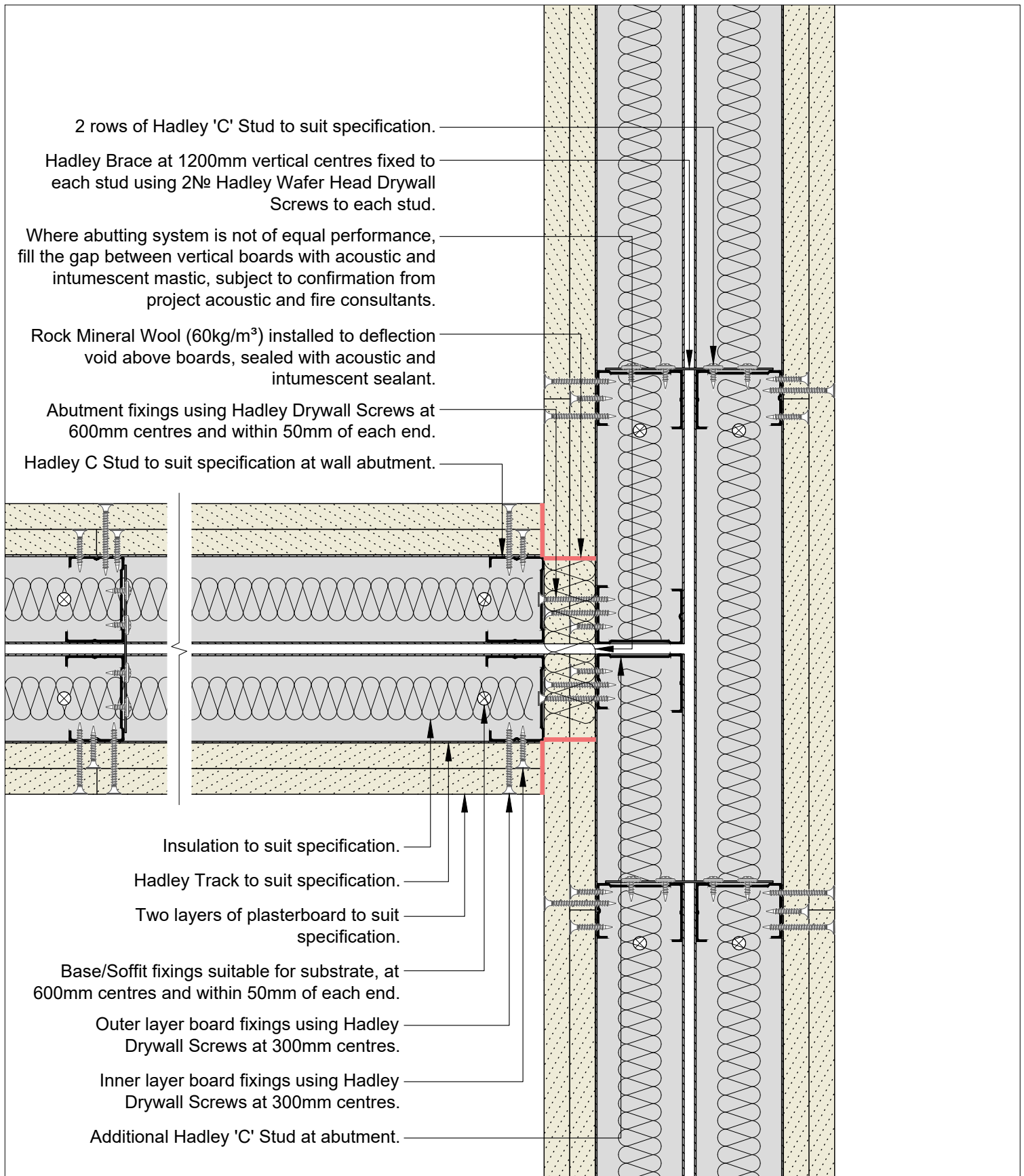
Hadley Group, Downing Street,
Smethwick, West Midlands B66 2PA
Tel: +44 (0) 121 555 1329
E-mail: drylining.technical@hadleygroup.co.uk

Project:
Typical System Detail
See project specification for exact requirements

Title:
Hadley Brace
Partition - Twin Frame Braced
Abutment to Drylining Partition

Scale: 1:3 @ A4	Date: Jul 21	Drawn: FM	Checked: JS	Dwg No: HD-BRACE-07	Revision: 00
--------------------	-----------------	--------------	----------------	-------------------------------	------------------------

All performance data and system specifications are for systems constructed with materials & components as shown. The inclusion or substitution of any other manufacturers materials or components could invalidate test data and system performance. The information is provided in good faith and is based upon details received which are assumed to include all relevant facts. No duty of care is owed to the recipient or any other third party and Hadley Industries PLC cannot accept liability in respect of the details shown. None of the content may be distributed or copied directly without prior approval.



2 rows of Hadley 'C' Stud to suit specification.

Hadley Brace at 1200mm vertical centres fixed to each stud using 2N₆ Hadley Wafer Head Drywall Screws to each stud.

Where abutting system is not of equal performance, fill the gap between vertical boards with acoustic and intumescent mastic, subject to confirmation from project acoustic and fire consultants.

Rock Mineral Wool (60kg/m³) installed to deflection void above boards, sealed with acoustic and intumescent sealant.

Abutment fixings using Hadley Drywall Screws at 600mm centres and within 50mm of each end.

Hadley C Stud to suit specification at wall abutment.

Insulation to suit specification.

Hadley Track to suit specification.

Two layers of plasterboard to suit specification.

Base/Soffit fixings suitable for substrate, at 600mm centres and within 50mm of each end.

Outer layer board fixings using Hadley Drywall Screws at 300mm centres.

Inner layer board fixings using Hadley Drywall Screws at 300mm centres.

Additional Hadley 'C' Stud at abutment.

00	JUL21	First Issue	FM	JS	JS	System details to be read in conjunction with Hadley Group project specification pack. All applications to be built in accordance with British Standards, Building Regulations and Hadley Group tested solutions.
Rev:	Date:	Reason for Issue:	Drn:	Chk:	App:	



Hadley Group, Downing Street,
Smethwick, West Midlands B66 2PA
Tel: +44 (0) 121 555 1329
E-mail: drylining.technical@hadleygroup.co.uk

Project: Typical System Detail See project specification for exact requirements						
Title: Hadley Brace Partition - Twin Frame Braced Abutment to Drylining Twin Frame						
Scale:	Date:	Drawn:	Checked:	Dwg No:	Revision:	
1:3 @ A4	Jul 21	FM	JS	HD-BRACE-08	00	

All performance data and system specifications are for systems constructed with materials & components as shown. The inclusion or substitution of any other manufacturers materials or components could invalidate test data and system performance. The information is provided in good faith and is based upon details received which are assumed to include all relevant facts. No duty of care is owed to the recipient or any other third party and Hadley Industries PLC cannot accept liability in respect of the details shown. None of the content may be distributed or copied directly without prior approval.
© 2021 Hadley Industries Holdings Limited

Board Thickness	Fixing Length
≤15mm	25mm
12.5mm + 12.5mm	25mm + 38mm
12.5mm + 15mm	25mm + 38mm
15mm + 15mm	25mm + 42mm

Insulation to suit specification.

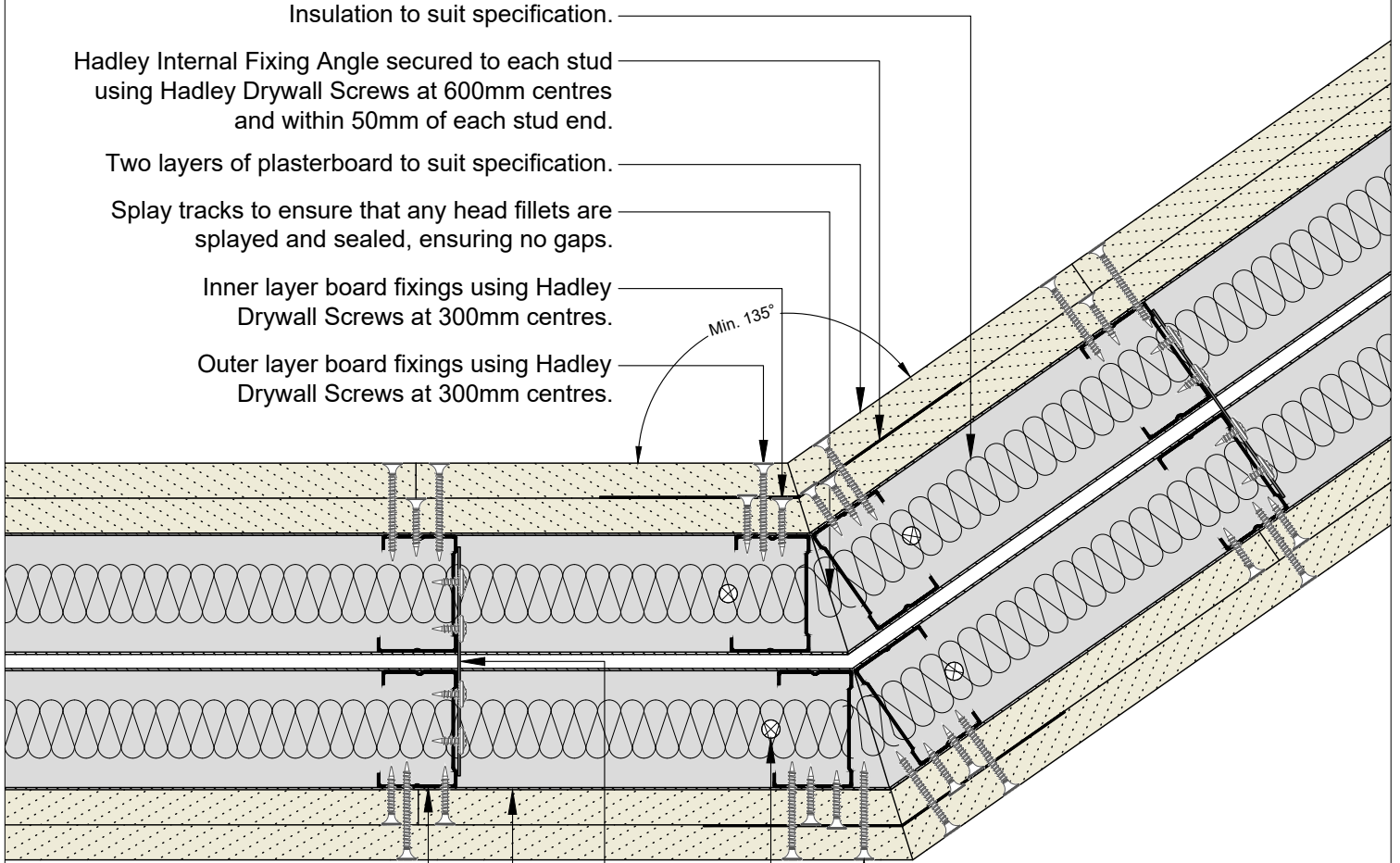
Hadley Internal Fixing Angle secured to each stud using Hadley Drywall Screws at 600mm centres and within 50mm of each stud end.

Two layers of plasterboard to suit specification.

Splay tracks to ensure that any head fillets are splayed and sealed, ensuring no gaps.

Inner layer board fixings using Hadley Drywall Screws at 300mm centres.

Outer layer board fixings using Hadley Drywall Screws at 300mm centres.



2 rows of Hadley 'C' Stud to suit specification.

Hadley Track to suit specification.

Hadley Brace at 1200mm vertical centres fixed to each stud using 2N^o Hadley Wafer Head Drywall Screws to each stud.

Base/Soffit fixings suitable for substrate, at 600mm centres and within 50mm of each end.

Corner board fixings using Hadley Drywall Screws at 200mm centres.

00	JUL21	First Issue	FM	JS	JS	System details to be read in conjunction with Hadley Group project specification pack. All applications to be built in accordance with British Standards, Building Regulations and Hadley Group tested solutions.
Rev:	Date:	Reason for Issue:	Drn:	Chk:	App:	



Hadley Group, Downing Street,
Smethwick, West Midlands B66 2PA

Tel: +44 (0) 121 555 1329

E-mail: drylining.technical@hadleygroup.co.uk

Project: Typical System Detail

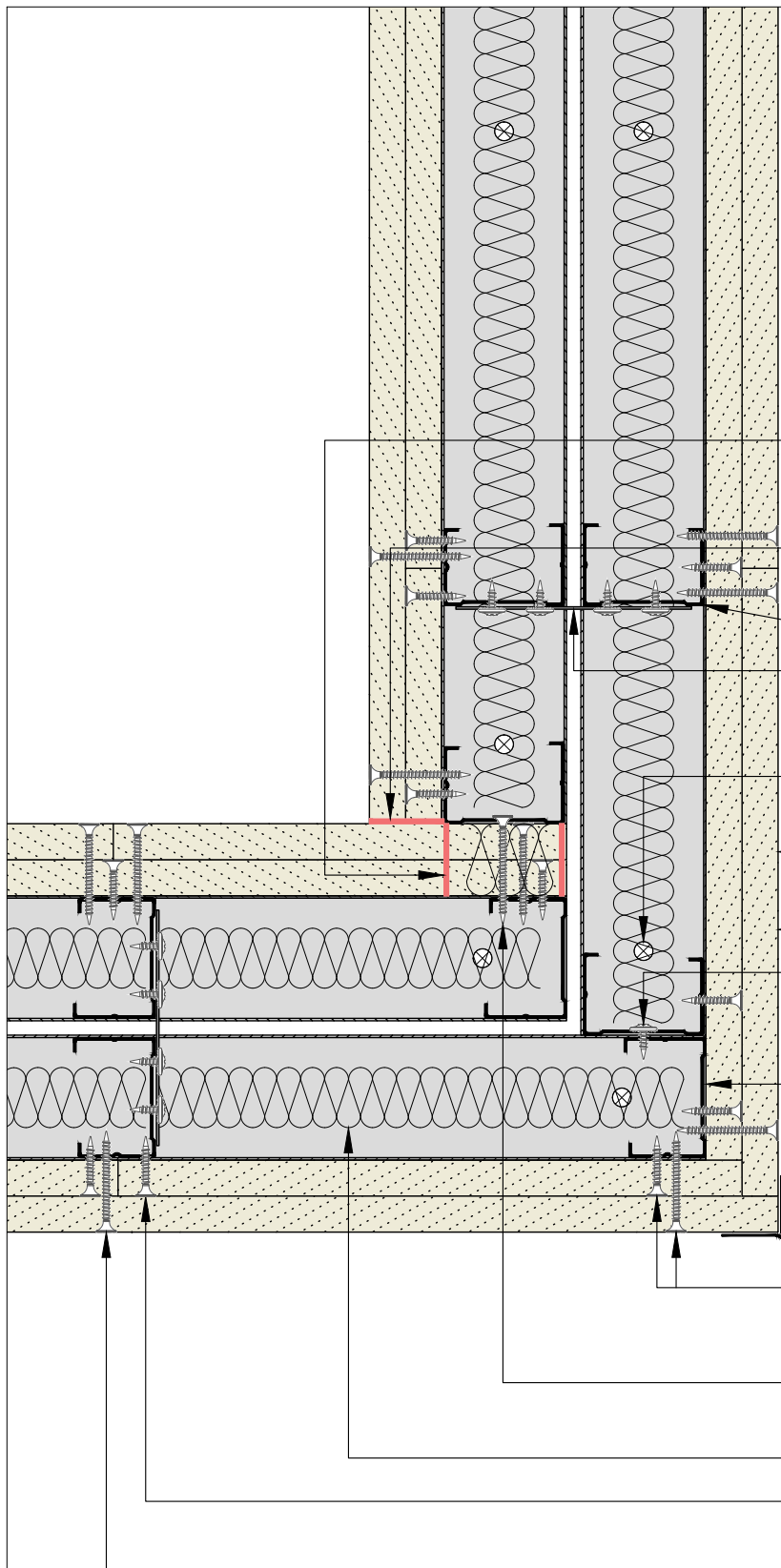
See project specification for exact requirements

Title:
Hadley Brace
Partition - Twin Frame Braced
Splayed Corner

Scale:	Date:	Drawn:	Checked:	Dwg No:	Revision:
1:3 @ A4	Jul 21	FM	JS	HD-BRACE-09	00

All performance data and system specifications are for systems constructed with materials & components as shown. The inclusion or substitution of any other manufacturers materials or components could invalidate test data and system performance. The information is provided in good faith and is based upon details received which are assumed to include all relevant facts. No duty of care is owed to the recipient or any other third party and Hadley Industries PLC cannot accept liability in respect of the details shown. None of the content may be distributed or copied directly without prior approval.

Board Thickness	Fixing Length
≤15mm	25mm
12.5mm + 12.5mm	25mm + 38mm
12.5mm + 15mm	25mm + 38mm
15mm + 15mm	25mm + 42mm



- Rock Mineral Wool (60kg/m³) installed to deflection void above boards, sealed with acoustic and intumescent sealant.
- Acoustic and intumescent sealant to suit specification.
- 2 rows of Hadley 'C' Stud to suit specification.
- Hadley Brace at 1200mm vertical centres fixed to each stud using 2N^o Hadley Wafer Head Drywall Screws to each stud.
- Base/Soffit fixings suitable for substrate, at 600mm centres and within 50mm of each end.
- Two layers of plasterboard to suit specification.
- Hadley Corner Bead.
- Abutment fixings using Hadley Wafer Head Drywall Screws at 600mm centres and within 50mm of each end.
- Hadley Track to suit specification.
- Corner board fixings using Hadley Drywall Screws at 200mm centres.
- Abutment fixings using Hadley Drywall Screws at 600mm centres and within 50mm of each end.
- Insulation to suit specification.
- Inner layer board fixings using Hadley Drywall Screws at 300mm centres.
- Outer layer board fixings using Hadley Drywall Screws at 300mm centres.

00	JUL21	First Issue	FM	JS	JS	System details to be read in conjunction with Hadley Group project specification pack. All applications to be built in accordance with British Standards, Building Regulations and Hadley Group tested solutions.
Rev:	Date:	Reason for Issue:	Drn:	Chk:	App:	



Hadley Group, Downing Street,
Smethwick, West Midlands B66 2PA
Tel: +44 (0) 121 555 1329
E-mail: drylining.technical@hadleygroup.co.uk

Project: Typical System Detail See project specification for exact requirements						
Title: Hadley Brace Partition - Twin Frame Braced 90° Corner						
Scale:	Date:	Drawn:	Checked:	Dwg No:	Revision:	
1:3 @ A4	Jul 21	FM	JS	HD-BRACE-10	00	

All performance data and system specifications are for systems constructed with materials & components as shown. The inclusion or substitution of any other manufacturers materials or components could invalidate test data and system performance. The information is provided in good faith and is based upon details received which are assumed to include all relevant facts. No duty of care is owed to the recipient or any other third party and Hadley Industries PLC cannot accept liability in respect of the details shown. None of the content may be distributed or copied directly without prior approval.
© 2021 Hadley Industries Holdings Limited

Stud and track depths and gauge to suit specification.
Fixing type to suit metalwork gauge.

Avoid outer board joint located on the door jamb.

Hadley Track to suit specification.
Lintel detail to suit opening width.

Hadley Track cut and bent to extend
250mm down stud, fixed through
both flanges using 2N^e Hadley Wafer
Head Drywall Screws each side.

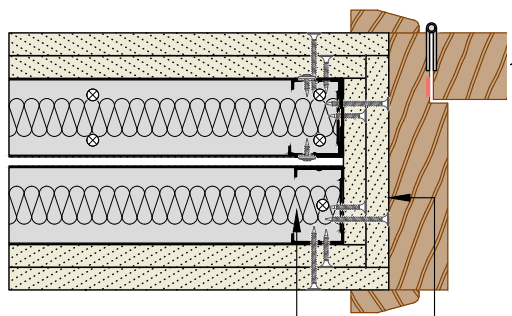
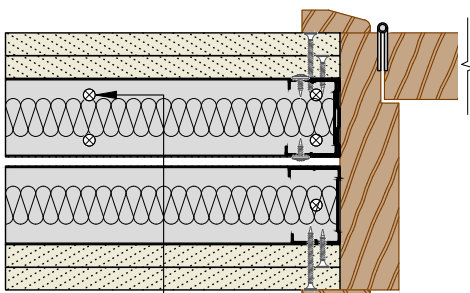
Hadley Track sleeved over stud
between returned channels at opening
head & base, fixed through both flanges
using Hadley Wafer Head Drywall
Screws at 300mm centres and within
50mm of each end for each side.

Hadley Track cut and bent to extend
vertically 300mm, fixed through both
flanges using 3N^e Hadley Wafer Head
Drywall Screws each side.

250mm

300mm

Plan View



Indicative door frame and
architraves by others.
Base track fixed with pairs of
suitable fixings 150mm apart.

For fire rated openings, apply
plasterboard as per face board
specification to the reveals.
Timber fillets, omitted for clarity, within door
jamb to suit door manufacturers application
requirements and tested solution.

00 JUL21 First Issue FM JS JS System details to be read in conjunction with Hadley Group project specification pack. All applications to be built in accordance with British
Rev: Date: Reason for Issue: Drn: Chk: App: Standards, Building Regulations and Hadley Group tested solutions.



Hadley Group, Downing Street,
Smethwick, West Midlands B66 2PA
Tel: +44 (0) 121 555 1329
E-mail: drylining.technical@hadleygroup.co.uk

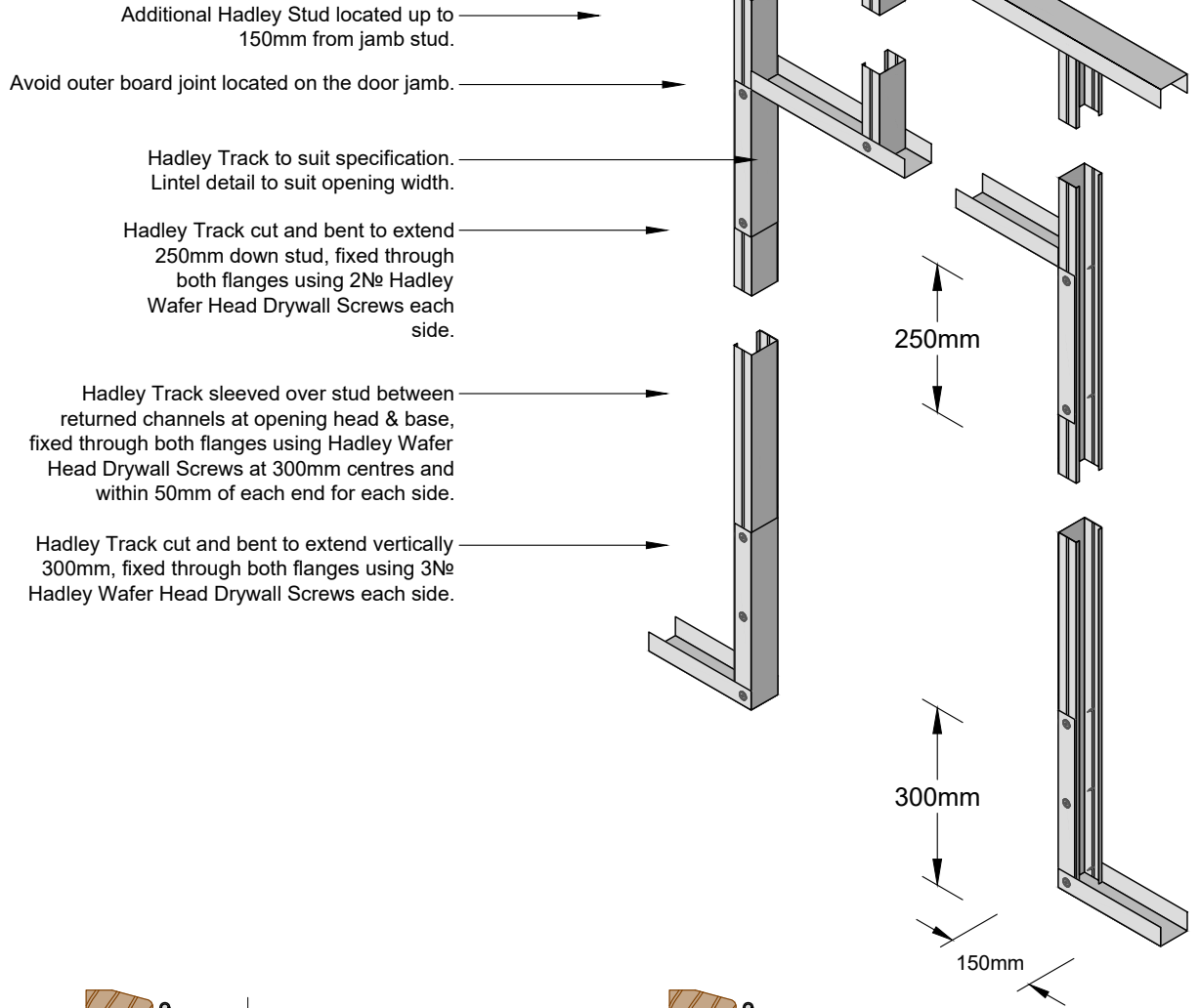
Project: Typical System Detail
See project specification for exact requirements

Title: **Hadley Brace**
Partition - Twin Frame Braced
Doorway 0-60 kg

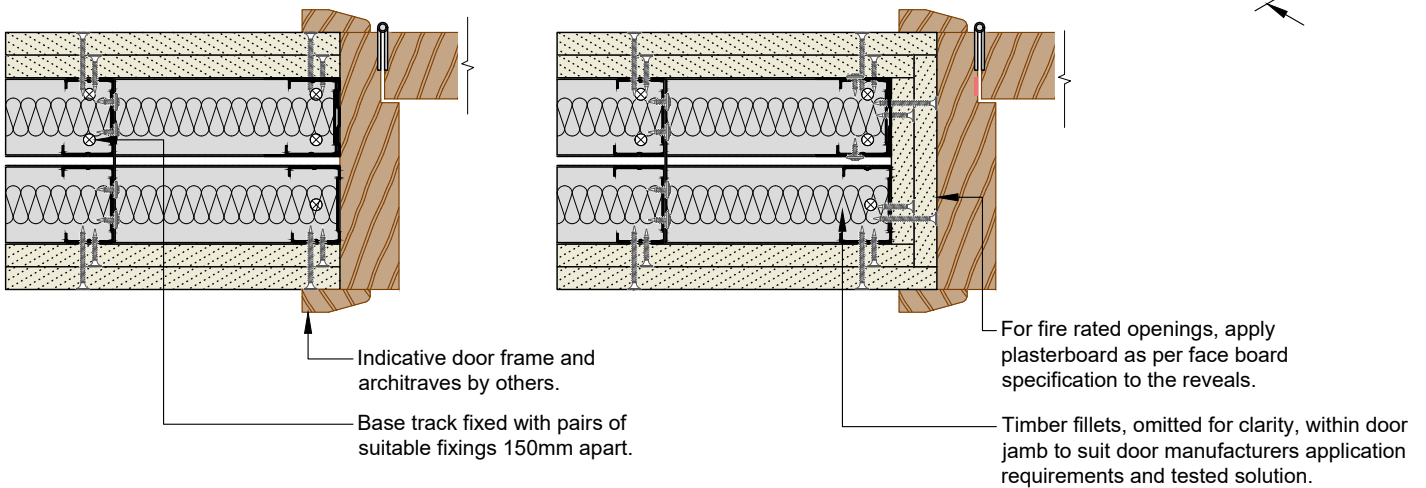
Scale: NTS Date: Jul 21 Drawn: FM Checked: JS Dwg No: HD-BRACE-11 Revision: 00

All performance data and system specifications are for systems constructed with materials & components as shown. The inclusion or substitution of any other manufacturers materials or components could invalidate test data and system performance. The information is provided in good faith and is based upon details received which are assumed to include all relevant facts. No duty of care is owed to the recipient or any other third party and Hadley Industries PLC cannot accept liability in respect of the details shown. None of the content may be distributed or copied directly without prior approval.

Stud and track depths and gauge to suit specification.
Fixing type to suit metalwork gauge.



Plan View



00	JUL21	First Issue	FM	JS	JS	System details to be read in conjunction with Hadley Group project specification pack. All applications to be built in accordance with British Standards, Building Regulations and Hadley Group tested solutions.
Rev:	Date:	Reason for Issue:	Drn:	Chk:	App:	



Hadley Group, Downing Street,
Smethwick, West Midlands B66 2PA
Tel: +44 (0) 121 555 1329
E-mail: drylining.technical@hadleygroup.co.uk

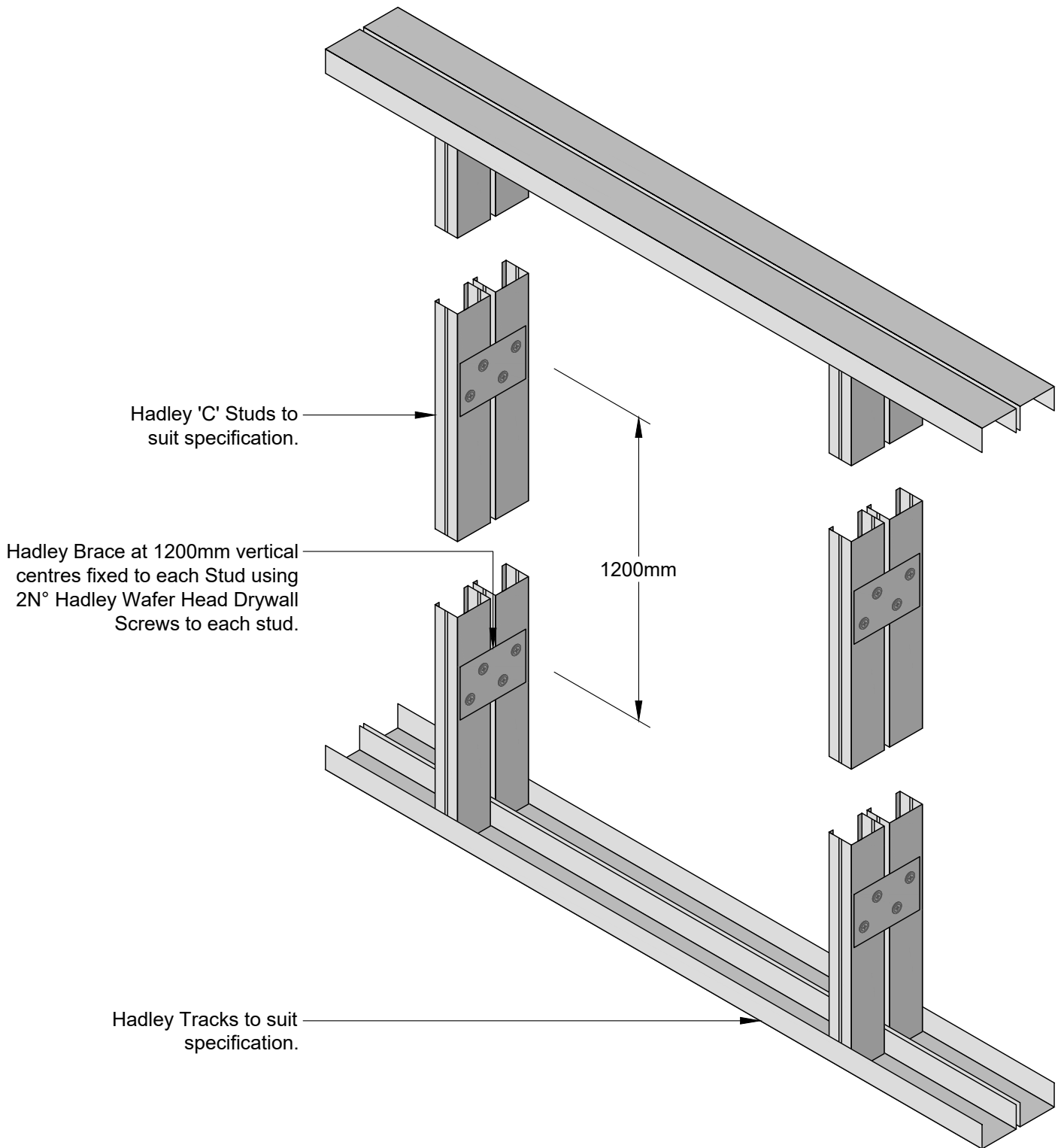
Project: Typical System Detail
See project specification for exact requirements

Title:
Hadley Brace
Partition - Twin Frame Braced
Doorway 61-100 kg

Scale:	Date:	Drawn:	Checked:	Dwg No:	Revision:
NTS	Jul 21	FM	JS	HD-BRACE-12	00

All performance data and system specifications are for systems constructed with materials & components as shown. The inclusion or substitution of any other manufacturers materials or components could invalidate test data and system performance. The information is provided in good faith and is based upon details received which are assumed to include all relevant facts. No duty of care is owed to the recipient or any other third party and Hadley Industries PLC cannot accept liability in respect of the details shown. None of the content may be distributed or copied directly without prior approval.

Stud and track depths and gauge to suit specification.
Fixing type to suit metalwork gauge.



00	JUL21	First Issue	FM	JS	JS	System details to be read in conjunction with Hadley Group project specification pack. All applications to be built in accordance with British Standards, Building Regulations and Hadley Group tested solutions.
Rev:	Date:	Reason for Issue:	Drn:	Chk:	App:	



Hadley Group, Downing Street,
Smethwick, West Midlands B66 2PA
Tel: +44 (0) 121 555 1329
E-mail: drylining.technical@hadleygroup.co.uk

Project:

Typical System Detail
See project specification for exact requirements

Title:
Hadley Brace
Partition - Twin Frame Braced
Bracing Section View

Scale:	Date:	Drawn:	Checked:	Dwg No:	Revision:
NTS	Jul 21	FM	JS	HD-BRACE-13	00

All performance data and system specifications are for systems constructed with materials & components as shown. The inclusion or substitution of any other manufacturers materials or components could invalidate test data and system performance. The information is provided in good faith and is based upon details received which are assumed to include all relevant facts. No duty of care is owed to the recipient or any other third party and Hadley Industries PLC cannot accept liability in respect of the details shown. None of the content may be distributed or copied directly without prior approval.



HADLEY TECHNICAL SUPPORT

☎ +44 (0) 121 555 1329

✉ drylining.technical@hadleygroup.com



HADLEY TECHNICAL SUPPORT

☎ +44 (0) 121 555 1329

✉ drylining.technical@hadleygroup.com